



# Connecting Rod Kit

Merkur™ Bellows Pumps

406855C

ENG



## Important Safety Instructions

Read all warnings and instructions in manuals 312793 and 312795. Save all instructions.

## Kit 24E762

See reverse for parts illustration and assembly notes.

**TIP:** Some o-rings are close in size. Stack on bench to differentiate.

Ref	Description	OD in. (mm)	Qty
101*	O-RING, foot cap, LB050x (50cc) LB100x (100cc) LB150x (150cc)	1.8 (46) 2.4 (61) 2.7 (69)	1 1 1
102	O-RING, bellows chamber	2.5 (64)	1
103	CONNECTING ROD		1
104	O-RING, snap bushing	0.9 (23)	1
105*†	O-RING, piston LB050x (50cc) LB100x (150cc) & LB150x (150cc)	0.6 (15) 0.8 (20)	1 1
106	O-RING, snap bushing, FKM	1.1 (28)	1

\* Differentiate by size to be sure you use the correct o-ring for your model.

† May not be used. Piston and rod may separate during disassembly. If separated, always replace the o-ring before reassembly.

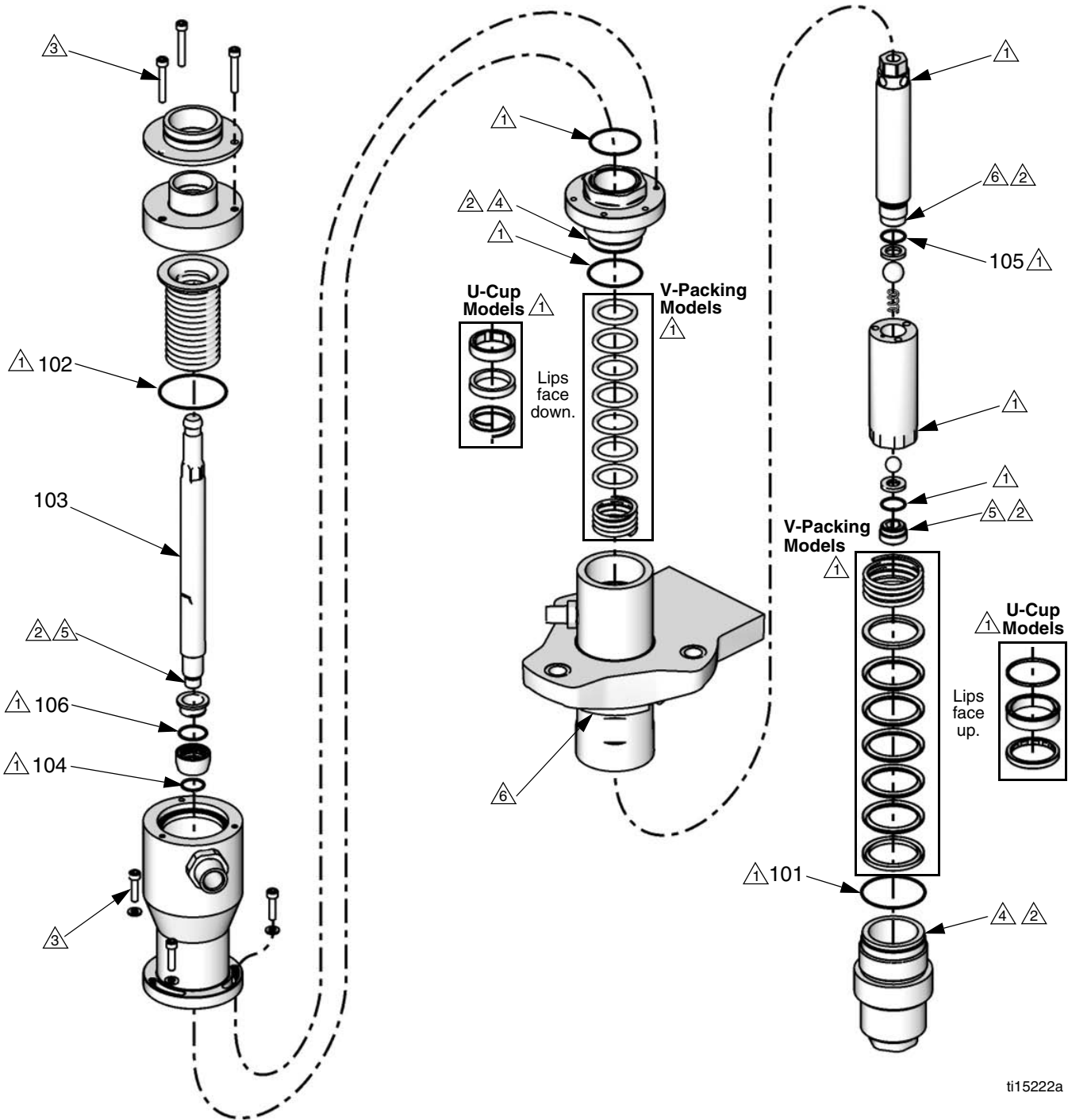
Graco Inc. P.O. Box 1441 Minneapolis, MN 55440-1441

Original instructions. MM 406855

Copyright 2010, Graco Inc. is registered to ISO 9001

Revised 07/2010

**NOTE:** Full disassembly shown. Disassemble as far as needed for the parts being replaced.



ti15222a

- △1 Apply grease.
- △2 Apply thread lubricant.
- △3 Torque to 100-120 in-lb (11-14 N•m).
- △4 Torque to 54-66 ft-lb (73-89 N•m).

- △5 Torque to 74-86 ft-lb (100-117 N•m).
- △6 Torque to 91-109 ft-lb (123-148 N•m).