

Quick Start Guide for Hand-Held Sprayers



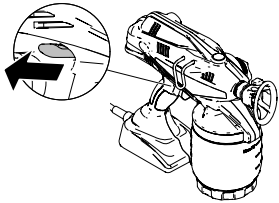
! WARNING

This guide is intended as a quick reference.
See Operation manual provided with your sprayer for full instructions on proper use and all safety warnings.

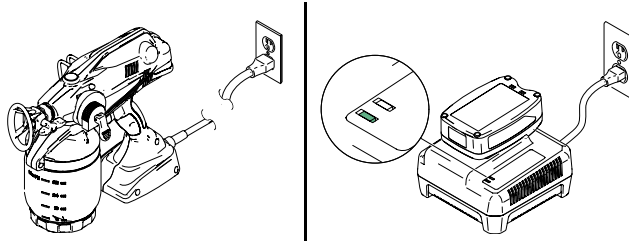
SETUP / FLUSHING OUT STORAGE MATERIAL

IMPORTANT!

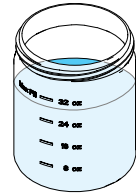
Always engage trigger lock when not spraying.



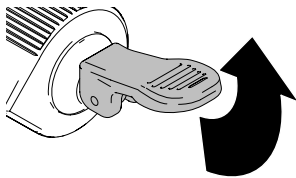
1. Plug sprayer into a properly grounded outlet, or fully charge a battery and install it into the sprayer.



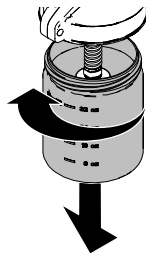
2. If spraying oil-based materials, fill material cup with paint thinner or oil-based flushing fluids. If spraying water-based materials, fill material cup with water.



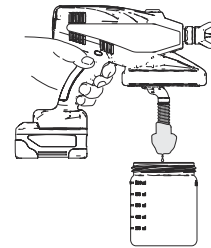
3. Put Prime/Spray Valve to UP position, then hold trigger in for 5-10 seconds.



4. Unscrew and remove material cup.

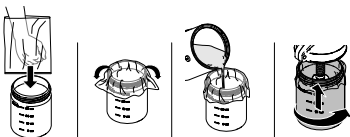


5. Hold sprayer slightly above material cup and pull trigger to discharge fluid from pump. Discard material in cup.

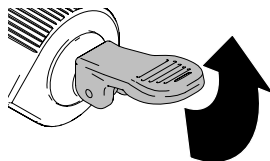


STARTING A NEW JOB OR REFILLING THE CUP

1. Install material cup liner (optional), fill with material, and thread onto sprayer.

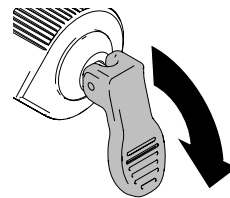


2. With the Prime/Spray Valve UP, trigger sprayer for 5-10 seconds.

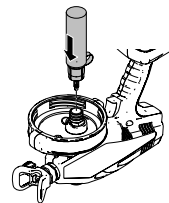


3. Release trigger and put Prime/Spray Valve DOWN to spray position.

You are now ready to spray!



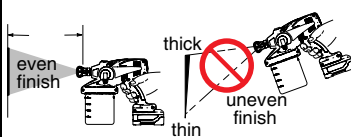
NOTE: If sprayer does NOT spray, use the Pump Armor Storage/Startup tool to clean the inlet valve. See **Inlet Valve Cleaning** in Operation manual.



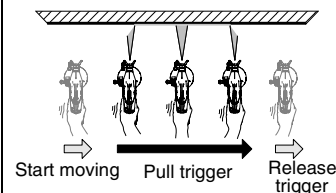
SPRAYING

Use a piece of cardboard to practice these basic spraying techniques. **Cover any area surrounding the surface that you don't want sprayed.**

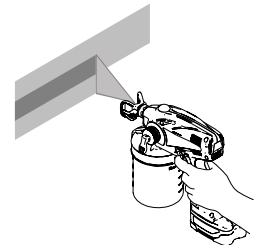
1. Hold sprayer at least 10 in. (25 cm) from surface. Aim sprayer straight at surface.



2. Flex your wrist while moving your arm. Pull trigger after starting the stroke. Release trigger before the end of the stroke.

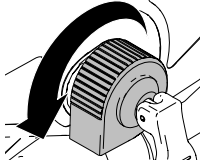


3. Aim tip of sprayer at bottom edge of previous stroke, overlapping each stroke by half.



ADJUSTING PRESSURE *(Not available on all units)*

1. To reduce overspray, always spray at lowest pressure that results in an acceptable spray pattern.



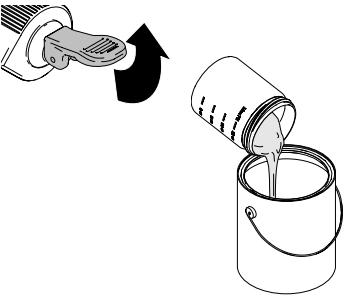
2. Start at the lowest pressure setting and adjust pressure to get desired coverage.

3. With some materials, if pressure is set too low, no material may spray out. Turn pressure control up.

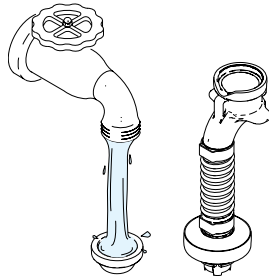


CLEAN UP

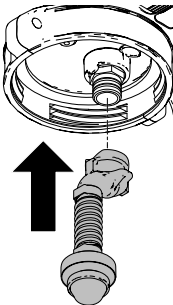
1. Pull Prime/Spray Valve UP and remove material in cup.



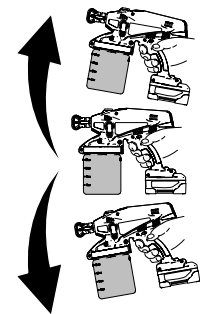
2. Remove the intake tube and use a screwdriver to pry off screen. Clean with water (or flushing fluid).



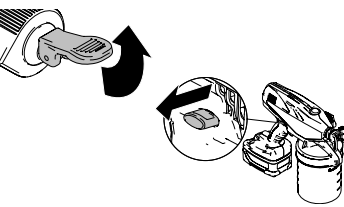
3. Reconnect intake tube and fill cup with warm soapy water or flushing fluid.



4. Reconnect material cup and shake sprayer to move clean fluid around.

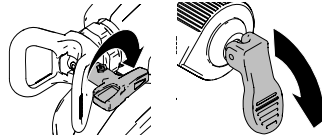


5. With the Prime/Spray Valve UP, trigger sprayer for 10-15 seconds. Engage trigger lock.



6. Discard contaminated fluid and refill with appropriate flushing fluid.

7. Reverse tip to UNCLOG position and put Prime/Spray Valve to DOWN position. Trigger sprayer into waste area until no paint appears in water or flushing fluid.

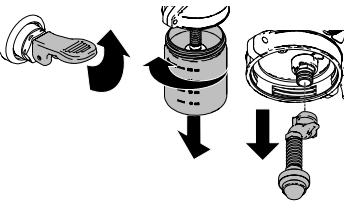


8. Remove Spray/Tip Guard Assembly and clean with water or flushing fluid.

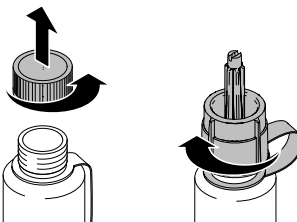


STORAGE *(Perform the steps below before storing the sprayer or starting a new job)*

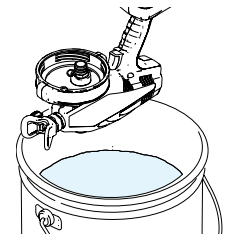
1. Lift valve UP to the prime position. Remove material cup and suction tube.



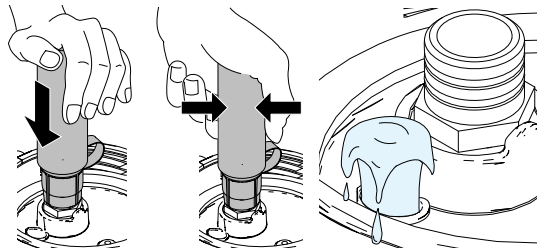
2. Remove child-resistant cap from Pump Armor bottle and thread tool onto sprayer. **NOTE:** For best results, make sure bottle is full.



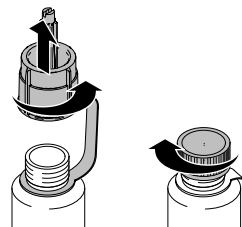
3. Hold sprayer upside-down over waste container.



4. Insert Pump Armor tool over material inlet and push it firmly until it stops. Squeeze bottle until Pump Armor flows out drain tube.



5. Remove Pump Armor tool and replace child-resistant cap for storage.



6. Attach suction tube and material cup. Push valve DOWN to spray position.

