

°C-MAX™

Graco Airless Hose Heating System
Spray paint in optimal conditions



°C-MAX ADVANTAGES

- **Variable Temperature Control** up to 60 °C
Set the temperature recommended by your paint manufacturer and your paint will be always in optimal condition for spraying.
- **Lower viscosity** of your material thanks to heating, results in spraying at lower pressure, thereby reducing overspray with a perfect finish.
- **Modular design**
Electronics have been optimized to fit all electric Graco piston pump sprayers.



°C-MAX™

When heat becomes a need

During the past 5 years, material manufacturers have spared no time nor expense to develop new generations of paint, **meeting new market demands**, such as:

- **Spraying with less overspray**,
to increase application domains
- **Protecting the environment**:
reducing the exhaust of hazardous components (VOC 2010)
- **Working more efficiently**
by applying thick coatings in one pass such as fire retardants and anti-corrosive paints.

°C-MAX HEATING SYSTEMS

New material developments go hand in hand with new innovations in spraying equipment. To respond to these new trends, Graco has extended its spraying line for painters with °C-MAX.

The °C-Max heating system works like a kettle. An electric resistance inside the °C-MAX hose is kept in contact with the paint and heats the material gradually over the length of the hose.

The °C-Control, the electronic brain, guarantees a gradual temperature setting of up to 60 °C and is programmed for Graco piston pump technology.

2 models are available: °C-MAX 1513 and °C-MAX 3023, with respectively 15 and 30 m hoses, supporting a 0.013" and a 0.023" tip.



°C-Control

Temperature control automatically adapts heating level to pressure and tip size used. Optimized to work with Graco piston pump sprayers.



Variable temperature setting

To set temperature:

- Switch on the °C-MAX with the On-Off switch.
- Select temperature with "+" or "-"
- Confirm temperature and spray.



Extra Plug

Plug your sprayer in the socket. Prime your unit. Switch on your °C-MAX and increase pressure slowly. Practical in case there is only one wall socket available on the jobsite.

°C-MAX Hose

Airless hose with built in electrical resistance. Easily supports a 0.013" tip (°C-MAX 1513) or 0.023" tip (°C-MAX 3023) tip. Configured to spray up to 230 bar.

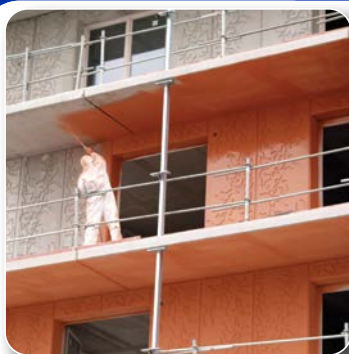


Materials & Applications

°C-MAX 3023 is optimized to reduce overspray during the spraying of façades, or to spray fire retardant materials more efficiently. The more compact °C-MAX 1513 is made for fine finish jobs such as doors, radiators, furniture or to reduce overspray in renovation projects.

°C-Max guarantees a gain in time thanks to quicker drying times and optimal conditions for heated material spraying. Works very well with oils, lacquers, primers, inside and outside paints, fire retardants and corrosion protective paints*. For solvent based materials, the °C-MAX is recommended for outside applications only.

* Always consult technical datasheets of the material manufacturer, before heating materials.



QuickConnector
easy and safe to install,
conform to safety specifications.



**ThermoConnector™,
simple and easy**

Unscrew existing hose and
replace by ThermoConnector.
Works with all electric Graco sprayers.



Plug and turn.
Very convenient, especially
when working with an
integrated hose reel.



Whip Hose

Standard delivered with 1.5 m x 3/16"
whip hose for comfortable spraying
on ladders, scaffoldings and elevators.

Easy to use

Only one switch to activate/deactivate
your °C-MAX.

TIP!: Whenever possible, switch off your
°C-MAX and spray airless non-heated material.



Save energy and avoid premature
wear of your spraying equipment.

GOOD TO KNOW

OVERSPRAY REDUCTION – ENVIRONMENTAL FRIENDLY

Did you know that hardly 10% of outside façades
get sprayed? Main reason: possible damage due
to overspray. Heating the material can significantly
reduce overspray.



ULTRA® MAX II PLATINUM HOSE REEL AND REMOTE CONTROL

The °C-MAX 3023, in combination with
any of Graco's Ultra® Max II Platinum
units, provides an optimum unit to spray façades.
The integrated hose reel eliminates lost time by
wrapping and unwrapping your hose manually.
The remote control allows you to adapt pressure
from scaffoldings, depending on whether you need
to spray big surfaces or doors and windows.

L.O.K



Use the Low Overspray Kit (L.O.K.)
system to limit overspray to a
minimum and double the usability of your sprayer.
With Graco L.O.K. system, you can now spray
almost all outside projects! Spray and roll, and
save up to 50% time using this innovative system.

! TIP

Graco Ultra® Max Sprayers have 2 hose outlets,
the °C-Max system to be mounted in addition to
the original hose. Use them together or alternate
without the burden of disassembly.

VOC 2010

As per the introduction of the VOC 2010 legislation, some of today's materials in the
market are so thick, that you need to spray with air AND additional heat to achieve
an optimal spray pattern.

Using your °C-MAX Heating System in combination with Graco **FinishPro™** Sprayers
is effective to spray the latest generation of lacquers. The on-board compressor is
designed to deliver an optimal air pressure to fit the Graco gun!
Do not forget to order your hopper!



www.graco.com



°C-MAX™ Accessories

Get the most out of your equipment, use the modularity of °C-MAX

Improve your spraying quality

TIPS are CRUCIAL: define your ultimate spray pattern. For optimal performance with °C-MAX:

LL5xxx	Black RAC® V tips for overspray reduction on façades
FFAxxx	Green RAC X tips for airless fine finish spraying
AAMxxx	Flat tips for air-assisted fine finish spraying
PAAxxx	Blue RAC X tips for overspray spraying interior walls
246215	RAC X guard for FFA- and PAAxxx tips
243161	RAC V guard for LL5xxx tips
220247	Flat tip guard for AAMxxx tips



Guns, for spraying at high-end temperatures, use a gun that protects you from the heat.

257380	AA30 gun (standard on FinishPro 290)
289604	G40 gun for air-assisted fine finish (standard on FinishPro 390 & 395)
246240	Silver gun



Tip Extensions

with RAC X Guard			
287019	25 cm	287020	40 cm
287021	50 cm	287022	75 cm



CleanShot™ Pole Gun with RAC X Guard

287026	90 cm	287027	180 cm
--------	-------	--------	--------



Rollers Exterior (complete)

6880095	30 cm fixed
098084	90-180 cm telescopic
098085	45-90 cm telescopic

Whips (230 bar)

238358	3/16" x 0.9 m
--------	---------------

Electric Extension Set for °C-MAX

24E777	15 m
--------	------

5.7 l Hopper Assembly

24B250	FinishPro 290
288526	FinishPro 390/395 + ST Max

Low Overspray Kit

248947	LOK
--------	-----

Hose Connectors

156971	1/4" x 1/4"	157350	1/4" x 3/8"
--------	-------------	--------	-------------



USE your current SPRAYER or combine your °C-Max with a unit that best fits your personal needs.

We have selected a few for you:

°C-MAX 1513



24E680 °C-MAX 1513 with FinishPro™ 290

Entry-level package to spray mainly fine finish objects, at extremely low overspray and with a very high quality finish thanks to the on board compressor.



24E681 °C-MAX 1513 with ST Max™ II 495 Hi-Boy

Ideal for a mixture of fine finish jobs and airless spraying of renovation projects.

°C-MAX 3023



24E682 °C-MAX 3023 with ST Max™ II 595 Hi-Boy

For spraying mainly airless interior projects, with occasional fine finish or outside paint jobs.



24E683 °C-MAX 3023 with Ultra® Max II 695 Platinum

The ideal unit for painting façades with reduced overspray, with hose reel and wireless remote control.

°C-MAX

READY TO GO,

The °C-MAX is delivered with °C-Control, °C-Max hose, ThermoConnector, and 3/16" x 1.5 m whip hose.

Find this unit at:

Specifications



Part Number:

	°C-MAX 1513 24E656	°C-MAX 3023 24E657
Hose Length	15 m	30 m
Additional Whip Hose	3/16" x 1.5 m	3/16" x 1.5 m
Max. Tip Size - 230 bar (3300 psi), paint	0.013"	0.023"
Performance - Watt	1500 W	2100 W
Max. Temperature - °C	60°	60°
Standard Temperature Settings	30°	45°
Max. Pressure - Bar (psi)	230 (3300)	230 (3300)
Power Consumption - Voltage	6.5 A - 230 V AC	10 A - 230 V AC
Recommended Units	FinishPro™ - ST Max™	Ultra® Max - Mark™ V