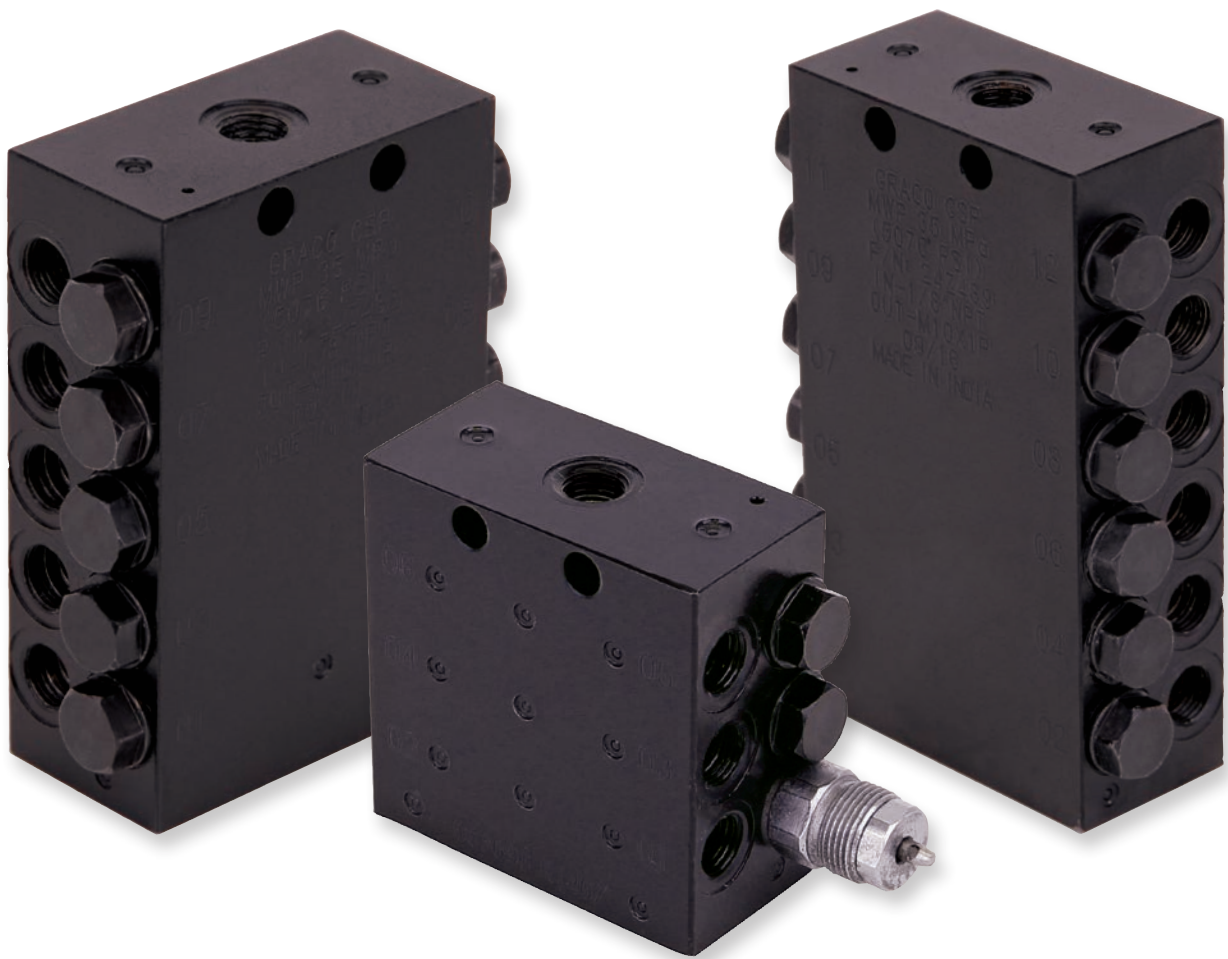




Compact Series Progressive Valves

Graco Quality in a Compact Package



- Compact Series Progressive (CSP) valve with broad market versatility.
- Combine with field-proven G-Series pumps for a complete system solution.

PROVEN QUALITY. LEADING TECHNOLOGY.

Rugged and Reliable Graco G-Series Pump Family

Combine the Compact Series Progressive (CSP) Valve with Field-Proven G-Series Pumps for a Complete System Solution.

Multiple Reservoir Sizes

Choice of 2, 4, 8, 12, or 16 litre U.V.-resistant, high-impact reservoirs for oil and grease to meet the needs of your equipment

Power Choices

Connect to DC (12V or 24V) and AC (90-240V) power sources with CPC or DIN-style connectors for easy, no hassle installations

Multiple Controller and Pump Options

Extensive choices within the G-Series Pump family to satisfy your application requirements.

Variable Pressure

Maximum working pressure of 352 bar (5100 psi) in up to NLGI #2 grease





1/8" NPT or BSPP Inlet

Built-in Durability

Zinc iron plating stands up to harsh environments

Variety of Configurations

6-22 outlets, available with or without indicators

High Output Pressure

Maximum working pressure of 350 bar (5,076 psi)

Output to Meet Your Needs

0.2 cc (0.012 in³)/stroke output with the ability to double-up outlets if greater output is required



Compact Series Progressive (CSP)



Rugged and Reliable Graco G-Series Pump Family

Select the Graco G-Series Pump which suits your power, feedback, and fluid capacity requirements.



Select the Pressure Relief Valve & Relief Valve Outlet Fittings



Select the CSP Divider Valve



Select the Divider Valve INLET Fittings



1

Select the G-Series pump model

For a complete list of available pump models, please refer to the Industrial Lubrication Buyer's guide on www.graco.com

2

Select the Pressure Relief Valve & Relief Valve Outlet Fittings

	PRESSURE RELIEF VALVE	RELIEF VALVE OUTLET FITTINGS							
1/4" BSP	26C176	<table border="1"> <tr> <td rowspan="2">Compression</td> <td>17R571 6mm, Straight</td> </tr> <tr> <td>OR</td> </tr> <tr> <td></td> <td>17R572 6mm, Elbow</td> </tr> <tr> <td>G-Lock Push-To-Connect</td> <td>17R569 6mm, Straight</td> </tr> </table>	Compression	17R571 6mm, Straight	OR		17R572 6mm, Elbow	G-Lock Push-To-Connect	17R569 6mm, Straight
Compression	17R571 6mm, Straight								
	OR								
	17R572 6mm, Elbow								
G-Lock Push-To-Connect	17R569 6mm, Straight								
1/8" NPT	26C030	<table border="1"> <tr> <td rowspan="2">Compression</td> <td>17T780 6mm, Straight</td> </tr> <tr> <td>OR</td> </tr> <tr> <td></td> <td>17T781 6mm, Elbow</td> </tr> </table>	Compression	17T780 6mm, Straight	OR		17T781 6mm, Elbow		
Compression	17T780 6mm, Straight								
	OR								
	17T781 6mm, Elbow								

3

Select the CSP Divider Valve

		THREAD SIZE	
# of outlets	Indicator Pin ?	1/8" NPT	1/8" BSPP
6	NO	24Z486	24Z477
	YES	24Z504	24Z495
8	NO	24Z487	24Z478
	YES	24Z505	24Z496
10	NO	24Z488	24Z479
	YES	24Z506	24Z497
12	NO	24Z489	24Z480
	YES	24Z507	24Z498
14	NO	24Z490	24Z481
	YES	24Z508	24Z499

		THREAD SIZE	
# of outlets	Indicator Pin ?	1/8" NPT	1/8" BSPP
16	NO	24Z491	24Z482
	YES	24Z509	24Z500
18	NO	24Z492	24Z483
	YES	24Z510	24Z501
20	NO	24Z493	24Z484
	YES	24Z511	24Z502
22	NO	24Z494	24Z485
	YES	24Z512	24Z503

4

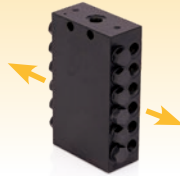
Select the Divider Valve INLET Fittings

1/8" BSPP Valve	<table border="1"> <tr> <td rowspan="2">Compression</td> <td>17L548 6mm, Straight</td> </tr> <tr> <td>OR</td> </tr> <tr> <td></td> <td>17L546 6mm, Elbow</td> </tr> <tr> <td>G-Lock Push-To-Connect</td> <td>17L545 6mm, Straight</td> </tr> <tr> <td></td> <td>OR</td> </tr> <tr> <td></td> <td>17L449 6mm, Elbow</td> </tr> </table>	Compression	17L548 6mm, Straight	OR		17L546 6mm, Elbow	G-Lock Push-To-Connect	17L545 6mm, Straight		OR		17L449 6mm, Elbow
Compression	17L548 6mm, Straight											
	OR											
	17L546 6mm, Elbow											
G-Lock Push-To-Connect	17L545 6mm, Straight											
	OR											
	17L449 6mm, Elbow											
1/8" NPT Valve	<table border="1"> <tr> <td rowspan="2">Compression</td> <td>17T780 6mm, Straight</td> </tr> <tr> <td>OR</td> </tr> <tr> <td></td> <td>17T781 6mm, Elbow</td> </tr> </table>	Compression	17T780 6mm, Straight	OR		17T781 6mm, Elbow						
Compression	17T780 6mm, Straight											
	OR											
	17T781 6mm, Elbow											

SYSTEM DESIGN SELECTOR METRIC



Select the Main Line HP Hose



Select the Divider Valve OUTLET Fittings



Select the Secondary Line HP Hose or Nylon Tube



Select the LUBE POINT Fitting

5

6

7

8

5

Select the Main Line (from Pump to CSP Divider Valve)

Hose Studs (compression OR PTC)		+	Hose Sleeve	+	HP Hose (8.6mm OD)	+	Hose Sleeve	+	Hose Studs		
Compression	17R565 6mm, Straight		17L648		17S552 25m		17L648		17R565 6mm, Straight		
	OR			OR		OR			OR		
	17R566 6mm, Elbow			17S553 50m		17L649 6mm, Straight			17R566 6mm, Elbow		
G-Lock Push-To-Connect	17L649 6mm, Straight			OR		17S554 100m			OR		17L649 6mm, Straight
	OR			OR		OR			OR		OR
	17L650 6mm, Elbow			17S555 200m		17L650 6mm, Elbow			OR		17L650 6mm, Elbow

6

Select the Divider Valve OUTLET Fittings

Compression	17L550 6mm X M10
G-Lock Push-To-Connect	17L458 6mm X M10
Nylon Tube only	17L543 6mm X M10

7

Select the Secondary Line (from CSP Divider Valve to Lube Point)

HIGH PRESSURE HOSE											
Hose Studs		+	Hose Sleeve	+	HP Hose (8.6mm OD)	+	Hose Sleeve	+	Hose Studs		
Compression	17R565 6mm, Straight		17L648		17S552 25m		17L648		17R565 6mm, Straight		
	OR			OR		OR			OR		
	17R566 6mm, Elbow			17S553 50m		17L649 6mm, Straight			17R566 6mm, Elbow		
G-Lock Push-To-Connect	17L649 6mm, Straight			OR		17S554 100m			OR		17L649 6mm, Straight
	OR			OR		OR			OR		OR
	17L650 6mm, Elbow			17S555 200m		17L650 6mm, Elbow			OR		17L650 6mm, Elbow

NYLON TUBE (6 mm)									
17S556 6mm x 25m	OR	17S557 6mm x 50m	OR	17S558 6mm x 100m	OR	17S559 6mm x 200m			

8

Select the LUBE POINT Fittings

Thread size	COMPRESSION		G-LOCK PUSH-TO-CONNECT	
	Straight	Elbow	Straight	Elbow
6mm X M6	17R573	17R574	17L457	17L448
6mm X M8	17R575	17R576	17L456	17L447
6mm X M10	17R577	17R578	17L455	17L446
6mm X 1/4" BSP	17R571	17R572	17R569	-
6mm X 1/8" BSP	17L548	17L546	17L545	17L449

Technical Specifications

Graco G3 SP Pump

The G3 SP (Series Progressive) combines the robust, proven design of our G-Series pumps with simple programming and valuable system feedback. The only programming requirements are number of cycles and off time between lube events.



VOLTAGE	RESERVOIR SIZE			
	2 L	4 L	8 L	12 L
12 VDC	96G221	96G222	–	–
24 VDC	96G223	96G224	96G225	96G226
90-240 VAC	96G227	96G228	–	–

Please note that G3 SP pumps are for use in Series Progressive systems only and they require a proximity switch.

Pump Re-Fill options:

OPTION 1 Re-fill via Grease Zerk



562857

Standard option on all G-Series Pumps

Use standard grease gun (Item #562857) to fill the reservoir

OPTION 2a Re-fill via High Capacity Fill Zerk (#24M644)



24M644

* Order Item #24M644 (1/4" NPT), and use instead of grease zerk or the 2 alternative ports



121474

* Use together with female coupler Item #121474, OR with any other coupler that conforms to ISO 7241-1 Series B

OPTION 2b Re-fill via High Capacity Fill Zerk (#247886)



247886

* Order the manual fill pump (Item #247886)

* Female coupler #121474 already included in the manual fill pump package

OPTION 2c Re-fill via Manual Hand Pump



571162

* Order Item #571162

* Screws directly into the pump element port
 - remove the unused G3 pump element plug
 - insert the grease fill pump into the port

Other

Pressure Relief Valve & Relief Valve Outlet Fittings



PART NUMBER	DESCRIPTION
26C176	Kit, Relief Valve and Fittings, BSP
26C030	Kit, Relief Valve and Fittings, NPT
17R569	Fitting, PTC, Straight, 6mm X 1/4", BSP
17R571	Fitting, Compression, Straight, 6mm X 1/4", BSP
17R572	Fitting, Compression, Elbow, 6mm X 1/4", BSP
17T780	Fitting, Compression, Straight, 6mm X 1/8" NPT
17T781	Fitting, Compression, Elbow, 6mm X 1/8" NPT

CSP Inlet Fittings



PART NUMBER	DESCRIPTION
17L449	Fitting, PTC, Elbow, 6mm X 1/8", BSP
17L545	Fitting, PTC, Straight, 6mm X 1/8", BSP
17L546	Fitting, Compression, Elbow, 6mm X 1/8", BSP
17L548	Fitting, Compression, Straight, 6mm X 1/8", BSP
17T780	Fitting, Compression, Straight, 6mm X 1/8", NPT
17T781	Fitting, Compression, Elbow, 6mm X 1/8", NPT

HP Hose & Nylon Tube Mounting Accessories



PART NUMBER	DESCRIPTION
17L648	Sleeve, Hose
17L649	Stud, Straight, 6mm, G-Lock Push-To-Connect
17L650	Stud, Straight, 6mm, G-Lock Push-To-Connect
17R565	Stud, Straight, 6mm, Compression
17R566	Stud, Elbow, 6mm, Compression

CSP Outlet Fittings

PART NUMBER	DESCRIPTION
17L550	Fitting, Compression, 6mm X M10
17L458	Fitting, PTC, 6mm X M10
17L543	Fitting, PTC, CSP Outlet, 6mm X M10 - Nylon Tube only

Lube Point Fittings



PART NUMBER	DESCRIPTION
17R571	Fitting, Compression, Straight, 6mm X 1/4" BSP
17R572	Fitting, Compression, Elbow, 6mm X 1/4" BSP
17L546	Fitting, Compression, Elbow, 6mm X 1/8" BSP
17L548	Fitting, Compression, Straight, 6mm X 1/8" BSP
17R573	Fitting, Compression, Straight, 6mm X M6
17R574	Fitting, Compression, Elbow, 6mm X M6
17R575	Fitting, Compression, Straight, 6mm X M8
17R576	Fitting, Compression, Elbow, 6mm X M8
17R577	Fitting, Compression, Straight, 6mm X M10
17R578	Fitting, Compression, Elbow, 6mm X M10
17R569	Fitting, G-Lock Push-To-Connect, Straight, 6mm X 1/4" BSP
17L545	Fitting, G-Lock Push-To-Connect, Straight, 6mm X 1/8" BSP
17L449	Fitting, G-Lock Push-To-Connect, Elbow, 6mm X 1/8" BSP
17L457	Fitting, G-Lock Push-To-Connect, Straight, 6mm X M6
17L448	Fitting, G-Lock Push-To-Connect, Elbow, 6mm X M6
17L456	Fitting, G-Lock Push-To-Connect, Straight, 6mm X M8
17L447	Fitting, G-Lock Push-To-Connect, Elbow, 6mm X M8
17L455	Fitting, G-Lock Push-To-Connect, Straight, 6mm X M10
17L446	Fitting, G-Lock Push-To-Connect, Elbow, 6mm X M10

Weld Stud Accessories

PART NUMBER	DESCRIPTION
26A478	Kit, Stud, Weld, CSP
26A479	Kit, Plate, Weld, CSP

Power Cables, Proximity Switch & Miscellaneous



PART NUMBER	DESCRIPTION
124333	M12 Cable, Male & Female, 4.88m
126331	Harness, Wiring, M12(F) to bare Wire, 5m (requires 124594)
124594	M12 4-Pin Male Connector for 6-8mm Cable
24Z719	Cable, M12 to 4 Pin, PNP
24Z720	Kit, M12 Cable with LED & Flying Leads, PNP (requires 124594)
17L879	Switch, Proximity Adapter M11
17L651	Plug, Doubling, CSP, M10 x 1



ABOUT GRACO

Founded in 1926, Graco is a world leader in fluid handling systems and components. Graco products move, measure, control, dispense and apply a wide range of fluids and viscous materials used in vehicle lubrication, commercial and industrial settings.

The company's success is based on its unwavering commitment to technical excellence, world-class manufacturing and unparalleled customer service. Working closely with qualified distributors, Graco offers systems, products and technology that set the quality standard in a wide range of fluid handling solutions. Graco provides equipment for spray finishing, protective coating, paint circulation, lubrication, and dispensing sealants and adhesives, along with power application equipment for the contractor industry. Graco's ongoing investment in fluid management and control will continue to provide innovative solutions to a diverse global market.

GRACO LOCATIONS

MAILING ADDRESS

P.O. Box 1441
Minneapolis, MN 55440-1441
Tel: 612-623-6000
Fax: 612-623-6777

AMERICAS

MINNESOTA

Worldwide Headquarters
Graco Inc.
88-11th Avenue N.E.
Minneapolis, MN 55413

EUROPE

BELGIUM

European Headquarters
Graco Distribution BVBA
Industrieterrein-Oude Bunders
Slakweidestraat 31
3630 Maasmechelen,
Belgium
Tel: 32 89 770 700
Fax: 32 89 770 777

ASIA PACIFIC

AUSTRALIA

Graco Australia Pty Ltd.
Suite 17, 2 Enterprise Drive
Bundoora, Victoria 3083
Australia
Tel: 61 3 9468 8500
Fax: 61 3 9468 8599

CHINA

Graco Hong Kong Ltd.
Shanghai Representative Office
Building 7
1029 Zhongshan Road South
Huangpu District
Shanghai 200011
The People's Republic of China
Tel: 86 21 649 50088
Fax: 86 21 649 50077

INDIA

Graco Hong Kong Ltd.
India Liaison Office
Room 432, Augusta Point
Regus Business Centre 53
Golf Course Road
Gurgaon, Haryana
India 122001
Tel: 91 124 435 4208
Fax: 91 124 435 4001

JAPAN

Graco K.K.
1-27-12 Hayabuchi
Tsuzuki-ku
Yokohama City, Japan 2240025
Tel: 81 45 593 7300
Fax: 81 45 593 7301

KOREA

Graco Korea Inc.
38, Samsung 1-ro 1-gil
Hwaseong-si, Gyeonggi-do,
18449
Republic of Korea
Tel: 82 31 8015 0961
Fax: 82 31 613 9801

All written and visual data contained in this document are based on the latest product information available at the time of publication. Graco reserves the right to make changes at any time without notice.

Graco is certified ISO 9001.



Europe
+32 89 770 700
FAX +32 89 770 777
WWW.GRACO.COM