

INSTRUCTIONS—PARTS LIST



First choice when
quality counts.™

306—568

Rev. B
Supersedes 4/75



This manual contains important
warnings and information.
READ AND KEEP FOR REFERENCE.

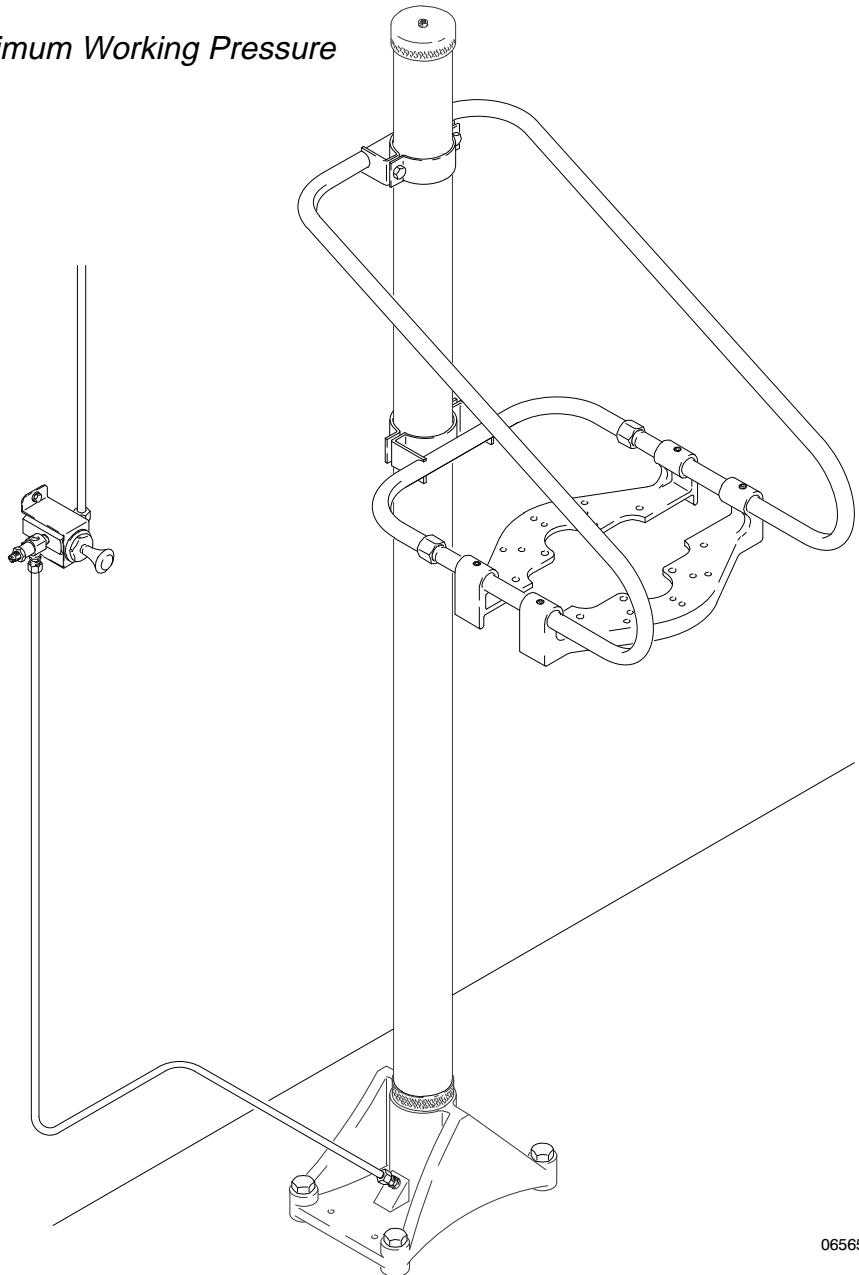
INSTRUCTIONS

120 to 400 lb. SIZE, EXPOSED DRUM

Elevator

200 psi (1.4 MPa, 14 bar) Maximum Working Pressure

Model 204—352



06565

GRACO INC. P.O. BOX 1441 MINNEAPOLIS, MN 55440—1441

©COPYRIGHT 1996, GRACO INC.

Graco Inc. is registered to I.S. EN ISO 9001

Table of Contents

Warnings	2	Parts List	7
Installation	3	Mounting Hole Layout	8
Operation	4	Dimensions	8
Parts Drawing, Elevator Assembly	5	Graco Warranty	12
Parts Drawing, Support & Mounting Brackets	6	Graco Phone Number	12

Symbols

Warning Symbol



This symbol alerts you to the possibility of serious injury or death if you do not follow the instructions.

Caution Symbol



This symbol alerts you to the possibility of damage to or destruction of equipment if you do not follow the instructions.

! WARNING



INSTRUCTIONS

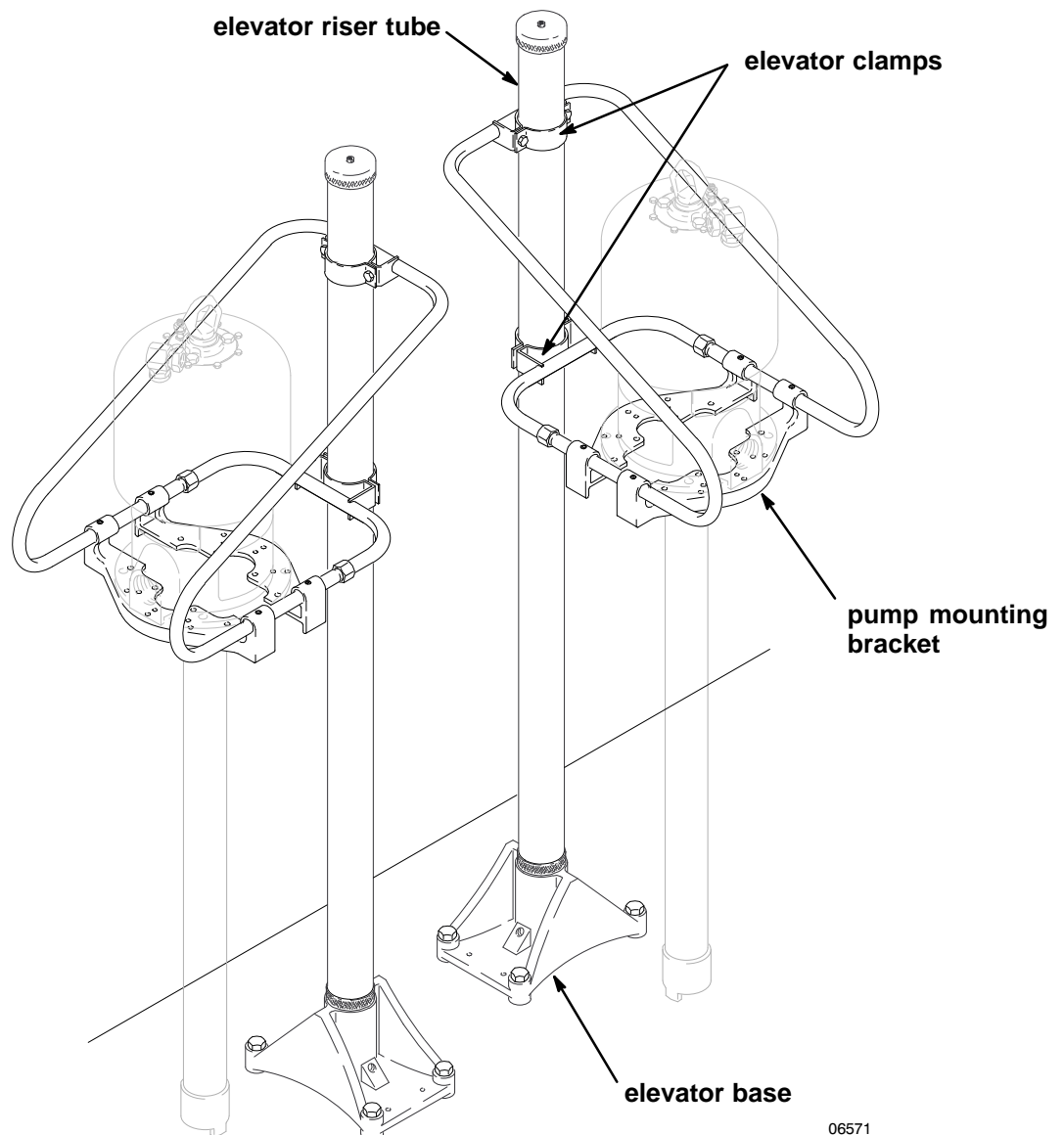
EQUIPMENT MISUSE HAZARD

Equipment misuse can cause the equipment to rupture or malfunction and result in serious injury.

- This equipment is for professional use only.
- Read all instruction manuals, tags, and labels before operating the equipment.
- Use the equipment only for its intended purpose. If you are not sure, call your Graco distributor.
- Do not alter or modify this equipment.
- Check equipment daily. Repair or replace worn or damaged parts immediately.
- Handle hoses carefully. Do not pull on hoses to move equipment.
- Route hoses away from traffic areas, sharp edges, moving parts, and hot surfaces. Do not expose Graco hoses to temperatures above 66°C (150°F) or below -40°C (-40°F).
- Comply with all applicable local, state, and national fire, electrical, and safety regulations.
- Use only hand-powered pumps to fill the booster gun with lubricant.

Installation

1. Place the unit in the desired location, making sure to have adequate clearance for plumbing while the unit is being raised or lowered. Overall height of the unit when raised is 94" (2930 mm) See **Dimensions** on page 8.
2. Level the base, using metal shims if necessary, and bolt the unit to the floor using the mounting holes provided in the elevator base.
3. If desired, the elevator base can be repositioned to permit raising the pump from one drum, pivoting 180°, and lowering it into another drum. See Fig. 1. The support bracket swivels 360° on the elevator riser tube.
4. Loosen the elevator clamps and slide the support bracket down over the elevator riser tube. See Fig. 1. Temporarily position the bracket high enough to permit mounting the pump, and loosely clamp the bracket to the elevator riser tube.
5. Place the pump in the pump mounting bracket, and secure it with the provided screws.
6. Loosen the elevator clamps, and slide the bracket and pump down until the pump intake valve rests on the floor.
7. Mount the elevator control valves on the wall, and connect them to the elevator and air supply as shown in the **Parts Drawing** on page 6. Connect the fluid lines and air lines to the pump.



06571

Fig. 1

Operation

See Fig. 2. To raise the elevator, pull out on the knob of the push-pull valve. The speed at which the elevator raises can be adjusted at the restrictor valve: Loosen the locknut, and turn the restrictor valve screw clockwise to decrease the speed, and counterclockwise to increase the speed. Tighten the locknut when adjustment is complete.

Position an opened drum of material against the elevator base. Loosen the setscrews holding the pump mounting plates to support the bracket and position the pump to line up with the drum opening. Tighten the setscrews.

Push in on the knob of the push-pull valve, and guide the pump into the drum.

Lubrication

Every two to six weeks, lubricate the elevator as follows: Disconnect the air supply, and relieve the air pressure; remove the elevator cap (19), and lubricate the inner surface of the elevator riser tube (14) and leather cup (10) with a few drops of lightweight, high-grade motor oil. See Fig. 3.

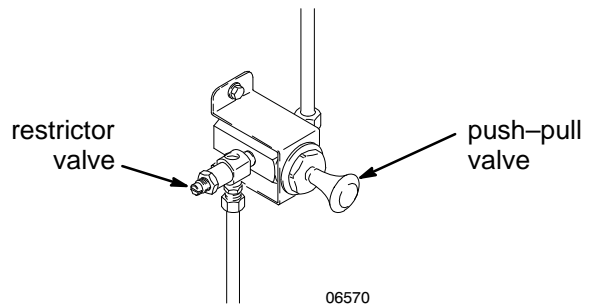


Fig. 2

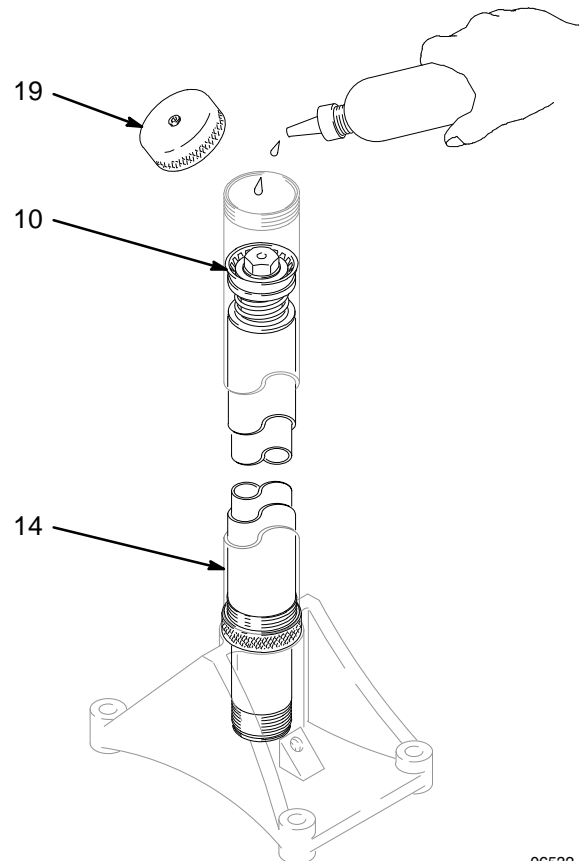


Fig. 3

06532

Service

Elevator Service

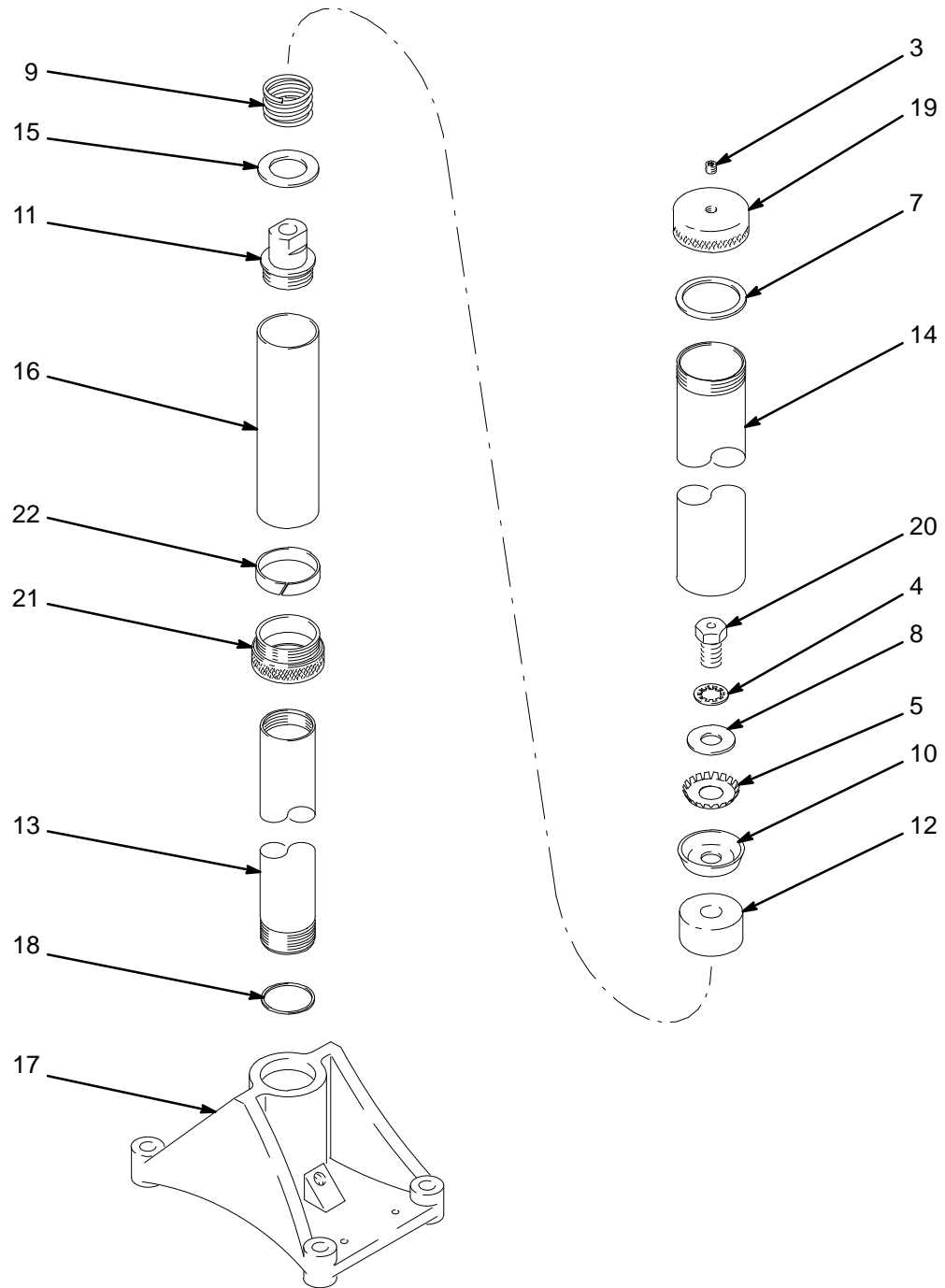
To disassemble the elevator for service, unscrew and remove the elevator riser tube (14), unscrew the piston cap screw (20) from the piston body (11), and unscrew the guide tube (13) from the piston body. Clean and inspect all parts for wear or damage and reassemble, using new parts as needed.

When reassembling, use plastic thread sealer on all threads, and coat the inner surface of the riser tube (14) with no. 2 lithium-base grease.

Push-Pull Valve Service

Worn washers, gaskets, or seals may cause valve failure. Shut off the air supply and remove the valve from the mounting bracket. Place the valve body in a vise and disassemble. Replace any worn parts and reassemble using the parts drawing on page 6 as a guide.

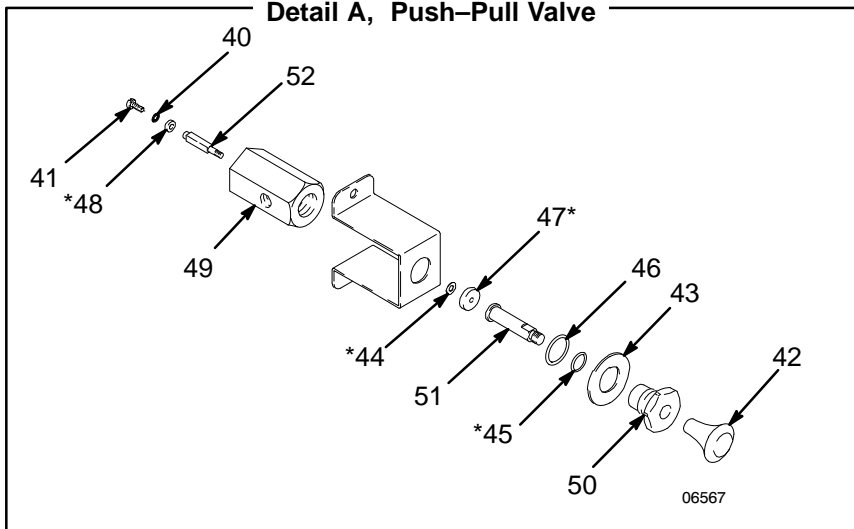
Parts Drawing, Elevator Assembly



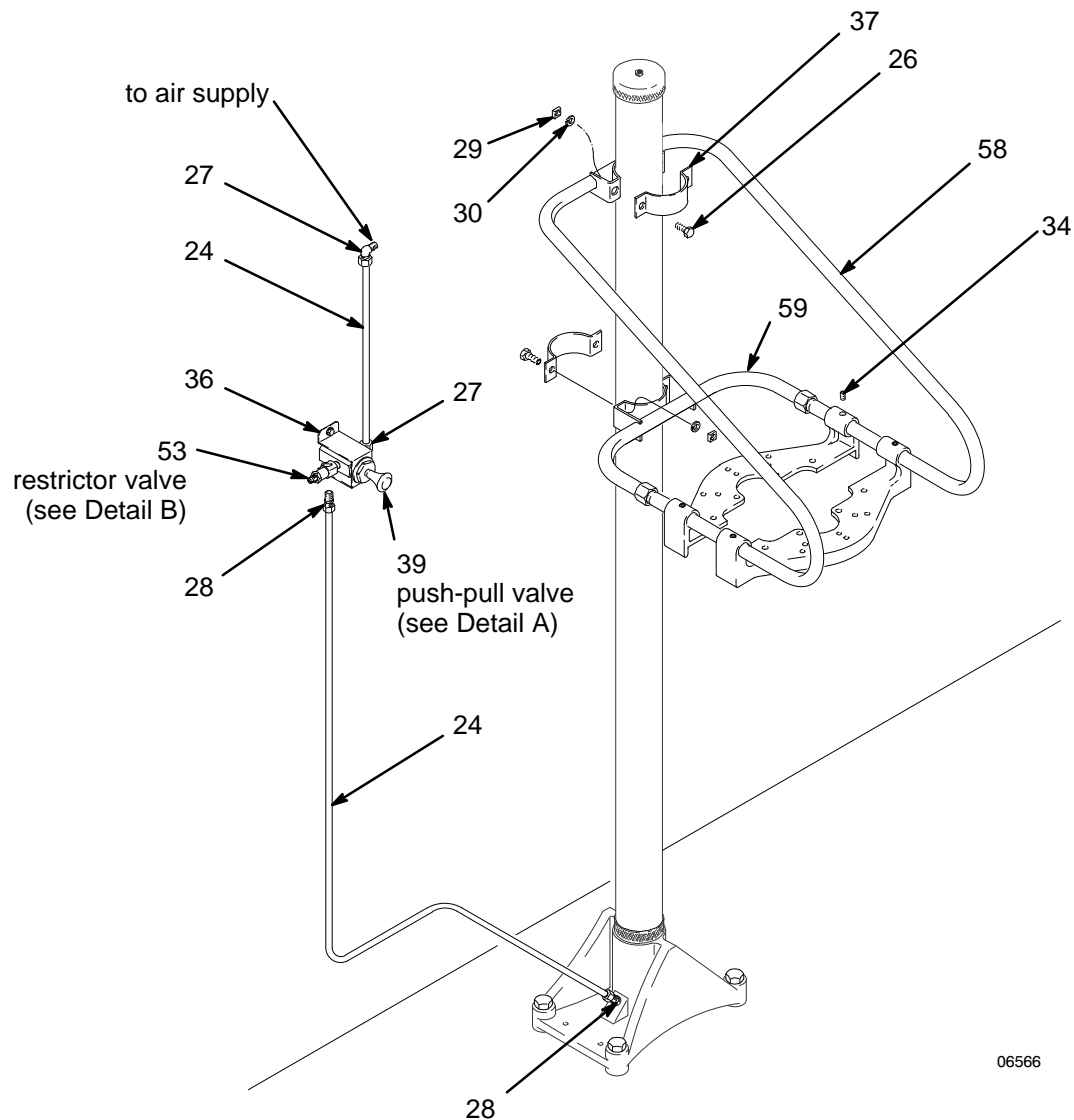
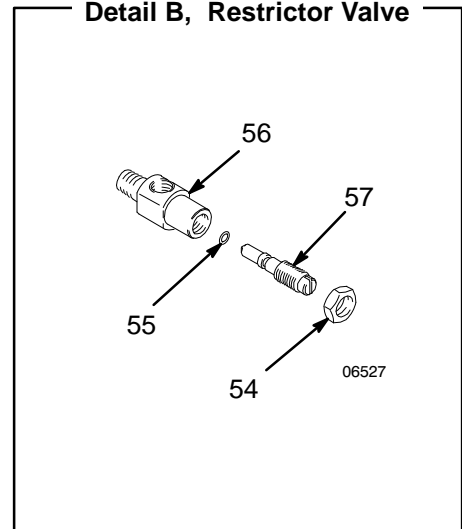
06524

Parts Drawing, Support & Mounting Brackets

Detail A, Push-Pull Valve



Detail B, Restrictor Valve



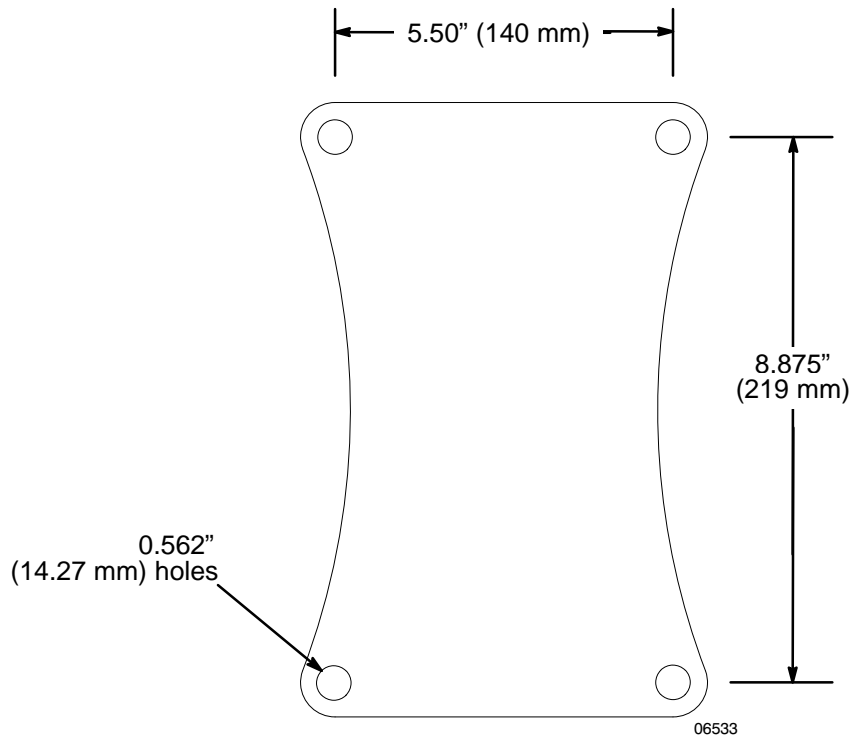
06566

Parts List

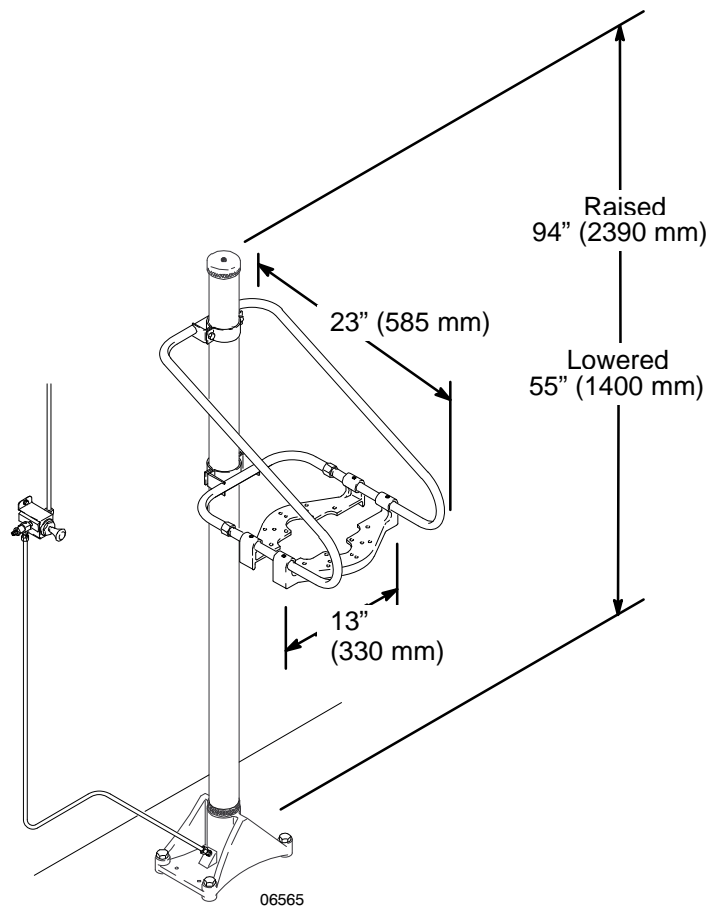
Ref. No.	Part No.	Description	Qty.	Ref. No.	Part No.	Description	Qty.
1	204-385	ELEVATOR ASSY. (Series C) Includes items 2-22	1	29	100-181	. NUT, square; .31"-18	4
2	100-055	. SCREW, type "u" drive; no. 6 x 0.25" (not shown)	2	30	100-214	. LOCKWASHER, spring; .31"	4
3	100-139	. PLUG, pipe; 1/8 npt	1	31	100-333	. SCREW, hex hd cap; .25"-20 x .50"	4
4	100-422	. LOCKWASHER, int shkprf; 0.75"	1	33	100-469	. SCREW, hex hd cap; .38"-16 x .75"	4
5	150-230	. WASHER, spreader	1	34	100-640	. SCREW, slotted hdless; .19-18 x .5"	4
6	150-707	. PLATE, serial (not shown)	1	35	150-707	. PLATE, serial (not shown)	1
7	155-899	. GASKET	1	36	154-634	. BRACKET, valve	1
8	156-306	. WASHER	1	37	158-271	. CLAMP, elevator rise tube	2
9	157-633	. SPRING, compression	1	38	161-327	. PLATE, pump mounting	2
10*	158-260	. LEATHER, cup	1	39	202-295	. PUSH-PULL VALVE Includes items 40-52	1
11	158-261	. BODY, elevator piston	1	40	100-282	.. LOCKWASHER, int shkprf; no. 6	1
12	158-262	. BEARING, elevator piston	1	41	100-757	.. SCREW, oval hd; no. 6-32 x .38"	1
13	158-263	. TUBE, elevator guide	1	42	154-519	.. KNOB	1
14	158-264	. TUBE, elevator riser	1	43	154-526	.. WASHER	1
15	158-265	. WASHER	1	44*	154-570	.. WASHER	1
16	158-267	. TUBE, elevator stop	1	45*	154-594	.. O-RING, nitrile rubber	1
17	158-270	. BASE, elevator	1	46	155-500	.. O-RING, nitrile rubber	1
18	158-429	. GASKET, copper	1	47*	155-811	.. SEAL, valve	1
19	161-320	. CAP, elevator riser tube	1	48*	155-921	.. SEAL, valve	1
20	162-408	. SCREW, elevator piston cap	1	49	157-160	.. BODY, valve	1
21	167-871	. HOUSING, bearing	1	50	157-161	.. GUIDE, valve	1
22	167-872	. BEARING, tape; PTFE	1	51	161-129	.. STEM, valve; large	1
23	204-510	SUPPORT & MOUNTING BRACKETS (Series C) Includes items 24-59	1	52	161-132	.. STEM, valve; small	1
24	057-024	. TUBING, copper; .25" (6.4 mm) OD; 5 ft (1524 mm)	1	53	203-743	.. RESTRICTOR VALVE Includes items 54-57	1
25	100-055	. SCREW, type "u" drive; no. 6 x 0.25" (not shown)	2	54	101-448	.. NUT, ham; .38"-24	1
26	100-057	. SCREW, hex hd cap; .31"-18 x .75"	7	55	157-628	.. O-RING, nitrile rubber	1
27	100-112	. FITTING, male elbow compression 0.25" (6.4 mm) tube x 1/8 npt	2	56	160-162	.. BODY, valve	1
28	100-113	. FITTING, straight compression; 0.25" tube x 1/8 npt	2	57	160-163	.. NEEDLE, restrictor valve	1
				58	205-610	.. BRACKET, support, upper	1
				59	205-611	.. BRACKET, support, lower	1

* Recommended tool box spare parts. Keep these spare parts on hand to reduce down time.

Mounting Hole Layout



Dimensions



[illegible]

[illegible]

Manual Change Summary

This manual was revised to update the format and drawings electronically.

Graco Standard Warranty

Graco warrants all equipment manufactured by Graco and bearing its name to be free from defects in material and workmanship on the date of sale by an authorized Graco distributor to the original purchaser for use. With the exception of any special, extended, or limited warranty published by Graco, Graco will, for a period of twelve months from the date of sale, repair or replace any part of the equipment determined by Graco to be defective. This warranty applies only when the equipment is installed, operated and maintained in accordance with Graco's written recommendations.

This warranty does not cover, and Graco shall not be liable for general wear and tear, or any malfunction, damage or wear caused by faulty installation, misapplication, abrasion, corrosion, inadequate or improper maintenance, negligence, accident, tampering, or substitution of non-Graco component parts. Nor shall Graco be liable for malfunction, damage or wear caused by the incompatibility of Graco equipment with structures, accessories, equipment or materials not supplied by Graco, or the improper design, manufacture, installation, operation or maintenance of structures, accessories, equipment or materials not supplied by Graco.

This warranty is conditioned upon the prepaid return of the equipment claimed to be defective to an authorized Graco distributor for verification of the claimed defect. If the claimed defect is verified, Graco will repair or replace free of charge any defective parts. The equipment will be returned to the original purchaser transportation prepaid. If inspection of the equipment does not disclose any defect in material or workmanship, repairs will be made at a reasonable charge, which charges may include the costs of parts, labor, and transportation.

THIS WARRANTY IS EXCLUSIVE, AND IS IN LIEU OF ANY OTHER WARRANTIES, EXPRESS OR IMPLIED, INCLUDING BUT NOT LIMITED TO WARRANTY OF MERCHANTABILITY OR WARRANTY OF FITNESS FOR A PARTICULAR PURPOSE.

Graco's sole obligation and buyer's sole remedy for any breach of warranty shall be as set forth above. The buyer agrees that no other remedy (including, but not limited to, incidental or consequential damages for lost profits, lost sales, injury to person or property, or any other incidental or consequential loss) shall be available. Any action for breach of warranty must be brought within two (2) years of the date of sale.

Graco makes no warranty, and disclaims all implied warranties of merchantability and fitness for a particular purpose in connection with accessories, equipment, materials or components sold but not manufactured by Graco. These items sold, but not manufactured by Graco (such as electric motors, switches, hose, etc.), are subject to the warranty, if any, of their manufacturer. Graco will provide purchaser with reasonable assistance in making any claim for breach of these warranties.

In no event will Graco be liable for indirect, incidental, special or consequential damages resulting from Graco supplying equipment hereunder, or the furnishing, performance, or use of any products or other goods sold hereto, whether due to a breach of contract, breach of warranty, the negligence of Graco, or otherwise.

FOR GRACO CANADA CUSTOMERS

The parties acknowledge that they have required that the present document, as well as all documents, notices and legal proceedings entered into, given or instituted pursuant hereto or relating directly or indirectly hereto, be drawn up in English. Les parties reconnaissent avoir convenu que la rédaction du présente document sera en Anglais, ainsi que tous documents, avis et procédures judiciaires exécutés, donnés ou intentés à la suite de ou en rapport, directement ou indirectement, avec les procédures concernées.

Graco Phone Number

TO PLACE AN ORDER, contact your Graco distributor, or call this number to identify the distributor closest to you: **1-800-367-4023 Toll Free**

*All written and visual data contained in this document reflects the latest product information available at the time of publication.
Graco reserves the right to make changes at any time without notice.*

Sales Offices: Minneapolis, Detroit

Foreign Offices: Belgium, England, Korea, France, Germany, Hong Kong, Japan

GRACO INC. P.O. BOX 1441 MINNEAPOLIS, MN 55440-1441

<http://www.graco.com>

PRINTED IN USA 306-568 November 1996, Revised July 1998