



This manual contains important warnings and information.
READ AND KEEP FOR REFERENCE.

INSTRUCTIONS

AIR ASSISTED AIRLESS HIGH EFFICIENCY LOW PRESSURE SYSTEMS AIR REGULATOR

500 psi (34 bar) MAXIMUM INLET PRESSURE

Reduced Range 0–10 psi (0–0.7 bar)

Part No. 110776

Precision regulator preset to 10 psi (0.7 bar) maximum outlet pressure to ensure compliance to SCAQMD Air Quality Rules 1124, 1136, 1151.
Buna–N on Dacron diaphragms.

INSTALLATION

Preparing to Install the Air Regulator

Clean the air lines to remove dirt and scale before installing the air regulator.

Apply a minimum amount of pipe compound to the air line male threads.

CAUTION

To avoid getting compound into the air regulator and damaging it, start with the third thread back and work away from the end of the air line when applying pipe compound.

CAUTION

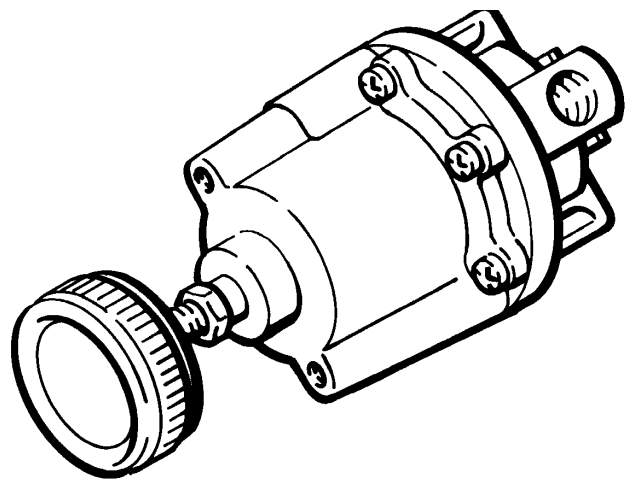
To avoid contaminating the air supply to the air regulator, do not use an automatic air line lubricator; lubricate the motor manually, instead.

Installing the Air Regulator

CAUTION

ALWAYS use an air line filter to remove harmful dirt and moisture from your compressed air supply. Dirt and moisture will affect air regulator performance.

Install the air regulator in the air line. It can be mounted in any position without affecting its operation.



The regulator has a 1/4 npt inlet and outlet, which are labeled with arrows indicating the direction of flow. Tighten the inlet and outlet connections securely.

CAUTION

DO NOT use undersized fittings as they will limit flow through the regulator and cause the pressure to drop downstream.

ADJUSTMENT

Turn the knob *clockwise* to increase the regulated air pressure. Turn it *counterclockwise* to decrease the regulated air pressure. The locknut is fixed to ensure the outlet pressure does not exceed 10 psi (0.7 bar).

NOTE: If the regulator is difficult to adjust, make sure the seal ring is lubricated.

MAINTENANCE

WARNING

To reduce the risk of serious bodily injury, including splashing in the eyes or on the skin, or injury from moving parts, **ALWAYS** shut off the air supply and relieve all air and fluid pressure in the system before removing or servicing the air regulator.

The regulator does not have to be removed from the air line to clean it. Remove the two No. 10–32 screws on the bottom of the regulator, then pull out the inner valve assembly.

Wash the inner valve assembly with solvent. Be careful not to damage the diaphragm and valve facings.

CAUTION

Do not use acetone, carbon tetrachloride, trichloroethylene or similar solvents to clean the regulator. These solvents could damage regulator parts.

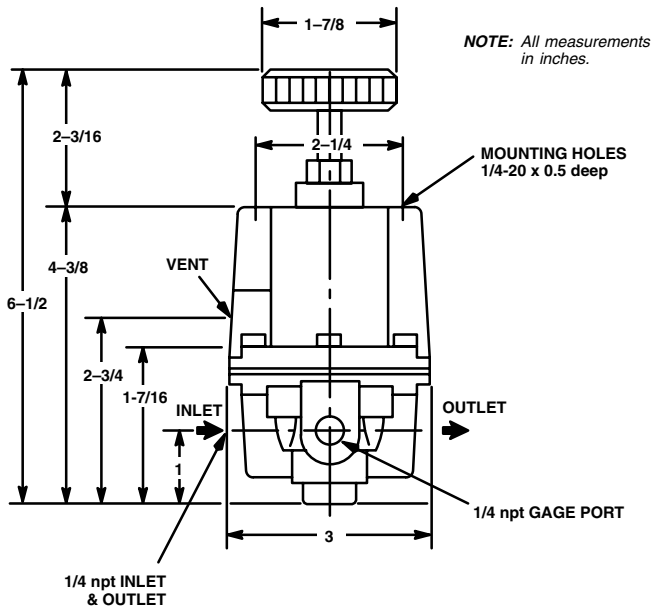
Be sure the spring housing vent hole is not clogged. Keep the vent hole clear as a slight flow of air through this hole is necessary for the regulator to operate properly.

Lubricate the adjusting screw with petroleum jelly.

TROUBLESHOOTING

PROBLEM	WHAT TO DO
High bleed rate	Check relief seat & relief valve for damage or foreign matter
Leakage	Check for diaphragm damage
Valve chatter	Lubricate seal rings
Air pressure gauge reading slowly changing	Make sure shipping plug in spring cap vent hole is removed

DIMENSIONAL DRAWING



ACCESSORIES

AIR PRESSURE GAUGE 185350

0–15 psi (1–103 KPa) Range
1/4 npt(m) bottom inlet

ADAPTER UNION 110232

1/4–18 npt(m x f), 45° swivel

ADAPTER 159842

1/4 npt(m) x 1/2 npt(f)

ADAPTER 110249

1/4–18 npt(m), 90° elbow

