

Masker Pump Repair Kit

308233D

EN

Repair kit for masker pump. For professional use only.

Model 235136

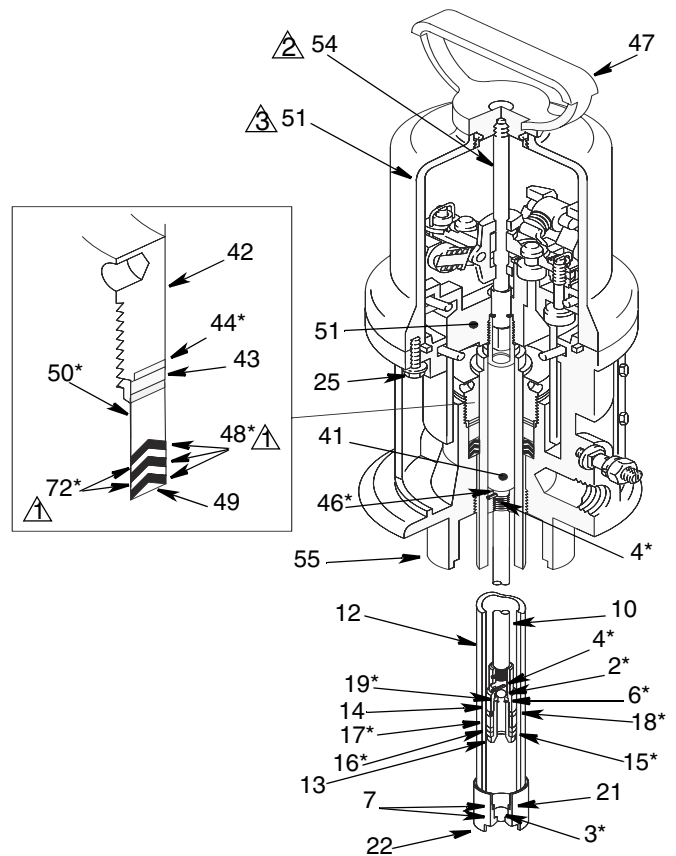
3000 psi (21.0 MPa, 210 bar) Maximum Working Pressure




Important Safety Instructions

Read all warnings and instructions in this manual and in the Overspray Masking Liquid System manual included with your unit. Save all instructions.

Ref.	Part No.	Description	Qty
2	103075	BALL, small	1
3	101859	BALL, large	1
4	101871	PIN	2
6	150451	GASKET	1
15	160941	BEARING	1
16	160942	SEAL	1
17	160943	PACKING	1
18	160944	BEARING	1
19	187753	SEAT	1
44	160644	PACKING, flat leather	1
46	150694	GASKET	1
48	111688	V-PACKING, nitrile	3
49	187755	GLAND, male	1
50	187856	BEARING, throat	1
72	111642	V-PACKING, nitrile	2



 Lips of v-packings must face down.

 Always grip with padded pliers.

 Lubricate inside

* Parts included in kit.

FIG. 1

Installation

Pressure Relief Procedure



Follow the Pressure Relief Procedure whenever you see this symbol.



1. Engage the gun's trigger safety latch.
2. Close the air regulator and disconnect the air supply hose.
3. Disengage the trigger safety latch. Hold a metal part of the gun firmly to the side of a grounded metal waste pail and trigger it to relieve the fluid pressure.
4. Engage the trigger safety latch.
5. Place a pail under the drain valve and open the drain valve to be sure all fluid pressure is relieved.

NOTE: If you suspect that the tip guard or hose is clogged, or that pressure has not been fully relieved after following the steps above, very slowly loosen the tip guard retaining nut or hose end coupling to relieve pressure gradually, then loosen completely.

Installation

1. Relieve the pressure. Remove the hoses. Un-mount the pump. Clamp the air motor in a vise.
2. Use a strap wrench on the tube (12) to screw it out of the base (55). Pull the connecting rod (10) down as far as it will go. Punch out the pin (4). Unscrew the connecting rod.

3. Manually push the piston rod (41) to move the piston (59) as far as it will go. Unscrew the cap nut (47) and pull up. Grip the trip rod (54) - **use padded pliers (Part No. 207579) to avoid damaging the trip rod surface** - and screw the nut off the rod.
4. Remove the screws (25). Pull the cylinder (51) straight up off the piston.
5. Remove one muffler plate (20 or 40). Loosen the packing nut (42).
6. Pull the piston/trip rod assembly up out of the base. Remove the throat packing nut (42) and packings.
7. Unscrew the valve (22) and remove it's parts.
8. If the smooth inner surface of the cylinder is scored or irregular, replace the cylinder.
9. Unscrew the piston body (13) from the piston coupling (14). Remove all piston parts except the press-fit brass bearing (15). If the bearing needs to be replaced, clamp it in a vise and drive the piston body out with a plastic hammer. The new bearing must be started onto the piston body squarely.
10. Clean the parts in a compatible solvent; inspect for wear or damage, including polished surfaces of the piston, piston rod, and cylinder wall. A scored rod causes premature packing wear and leaking. Use all parts in the kit and replace other parts as needed. Lubricate the parts with light, waterproof grease.
11. Reassemble, following the notes in the drawing. Tighten the packing nut just enough to stop leakage before installing the muffler plate.
12. Be sure the ground wire is connected before regular operation of the pump.

Graco Information

For the latest information about Graco products, visit www.graco.com.

TO PLACE AN ORDER, contact your Graco distributor or call to identify the nearest distributor.

Phone: 612-623-6928 or **Toll Free:** 1-800-533-9655, **Fax:** 612-378-3590

All written and visual data contained in this document reflects the latest product information available at the time of publication. Graco reserves the right to make changes at any time without notice.

For patent information, see www.graco.com/patents.

Original instructions. This manual contains English. MM 308223

Graco Headquarters: Minneapolis
International Offices: Belgium, China, Japan, Korea

GRACO INC. AND SUBSIDIARIES • P.O. BOX 1441 • MINNEAPOLIS MN 55440-1441 • USA

Copyright 1992, Graco Inc. All Graco manufacturing locations are registered to ISO 9001.

www.graco.com

Revised December 2012