



This manual contains important warnings and information.  
**READ AND KEEP FOR REFERENCE.**

INSTRUCTIONS

## TEXTURE SPRAY GUN

100 psi (7 bar) Maximum Air and Fluid Working Pressure

Model 240-786, Series A; Model 240-787, Series A

### ⚠ WARNING

#### Pressure Relief Procedure

To reduce the risk of serious bodily injury, including electric shock and splashing fluid in the eyes, follow this procedure whenever you stop spraying.

1. Shut off the pump or sprayer.
2. Trigger the gun.
3. Open the gun air valve.
4. Disconnect the power source.

#### Grounding

To reduce the risk of electric shock, proper electrical grounding is essential. See your separate pump or sprayer instruction manual, and consult your local electrical codes for detailed grounding instructions.

#### Working Pressure

To reduce the risk of component rupture and serious bodily injury, never exceed *100 psi (7 bar) AIR OR FLUID WORKING PRESSURE* to this gun. Do not exceed the maximum working pressure of any other component in the system.

#### Fluid and Solvent Compatibility

Do not use 1,1,1-trichloroethane, methylene chloride, other halogenated hydrocarbon solvents or fluids containing such solvents in this equipment, which contains aluminum and/or zinc parts. Such use could result in a serious chemical reaction, with the possibility of explosion, which could cause death, serious bodily injury and/or substantial property damage.

The standard gun adjustment is to adjust the material flow knob (18) so only 1 or 2 threads are visible and fully open the air valve (23).

Air bleeds from the gun nozzle when the gun air valve (23) is open. Close the valve to stop the air, if desired. Otherwise, it can stay open except during priming.

For continuous spraying, use the trigger bail (1) to hold the trigger open to reduce fatigue.

To prevent material surge at the beginning of a spray pattern, squeeze the trigger slowly to the fully triggered position while moving the gun quickly.

Adjusting the spray pattern requires testing to balance the pump pressure and the air to the gun, and using the right tip size.

1. Turn off air valve (23). Adjust the pump pressure until the material stream is about 8 in. (203 mm) long. Turn on air valve (23).
2. Test the spray pattern on cardboard. Spray 18-30 in. (457-762 mm) from the surface.

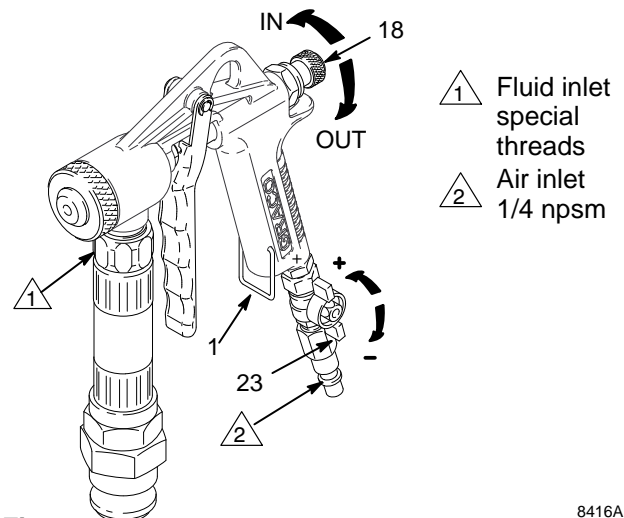


Fig. 1

8416A

3. Adjust the pump and the gun air valve (23) to achieve a uniform, round spray pattern.
4. Consider the size of aggregate in the material and the coarseness of the spray pattern. Remember, the larger the tip, the heavier the pattern.
5. Overlap each stroke 50%.

**GRACO INC. P.O. BOX 1441 MINNEAPOLIS, MN 55440-1441**

©COPYRIGHT 1998, GRACO INC.

Graco Inc. is registered to I.S. EN ISO 9001


**NOTE:** Always adjust the fluid pressure to the lowest pressure needed. This maximizes the efficiency of the gun adjustments.

When spraying small, confined areas, the valve and knob may be used to make fine adjustments without adjusting the pump when spraying smaller, confined areas, such as closets.

**Material flow knob adjustment (Fig. 2)**

For a lighter spray pattern, turn IN the knob (18).

For a heavier spray pattern, turn OUT the knob (18) so that no more than two threads are showing.

 <b>CAUTION</b>
Turning the knob (18) out too far will remove the knob and the gun will not shut off when the trigger is released.

**Air flow valve adjustment (See Fig 2)**

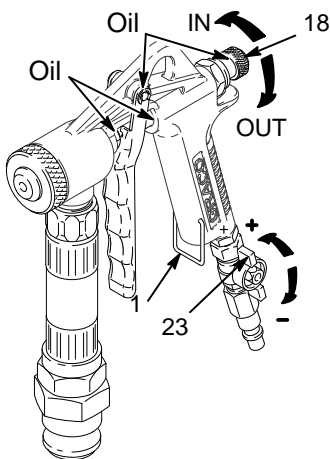
To decrease air flow turn the air valve (23) toward -.

To increase air flow, turn the air valve (23) toward +.

Check and thin the material as needed to maintain the proper consistency. The material may thicken as it sits and slow down production or affect the spray pattern.

Flush the gun at the end of each work day and dry it.

Oil the gun daily with a few drops of light oil (SAE-10) at the points indicated in Fig. 2.

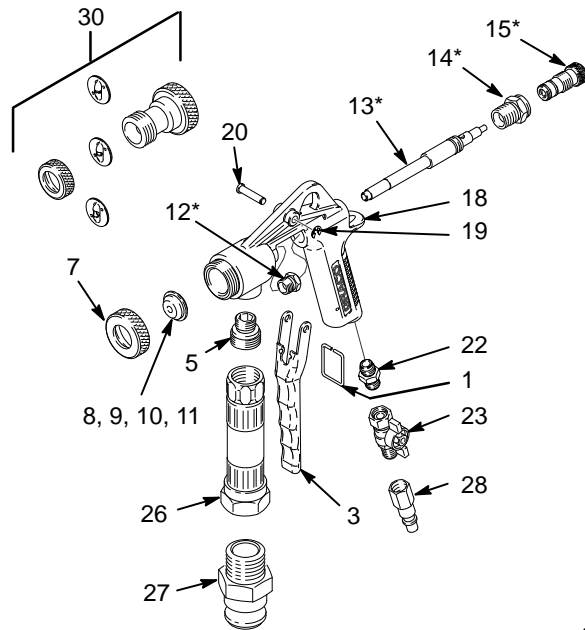


**Fig. 2** \_\_\_\_\_ 8416A

**Technical Data**

Air Consumption . . . . . 5.3 to 10.6 CFM at 15 to 44 psi  
(150 to 300 liter/min at 1 to 3 kgs/cm<sup>2</sup>)

Weight . . . . . 35 oz (1000 grams)



8415A

Model 240-786, Series A  
Includes items 1 to 29

Model 240-787, Series A  
Includes items 1 to 30

Ref No	Part No.	Description	Qty
1	187-391	BAIL, trigger	1
3	114-643	TRIGGER	1
5	114-642	FITTING, fluid inlet	1
7	114-636	RING, retaining	1
8*	111-547	5/16" TIP	1
9*	111-546	1/4" TIP	1
10*	111-545	3/16" TIP	1
11	111-963	1/8" TIP	1
12*	114-638	FITTING, needle	1
13*	114-637	NEEDLE	1
14*	114-639	GUIDE, regulator	1
15*	114-640	REGULATOR, fluid	1
18	193-687	GUN BODY	1
19	114-645	RETAINING RING	1
20	114-644	PIN	1
22	114-641	FITTING, air inlet	1
23	113-379	AIR VALVE	1
26	187-633	ADAPTER, hose	1
27	113-392	FITTING, 1" male	1
28	169-967	FITTING, air	1
29	110-110	SEALANT (not shown)	1
30	237-855	KIT, fine finish tips (see Manual 308-577)	1

**\*Gun Repair Kit 240-788**

Includes 12, 13, 14, and 15. Purchase kit separately.

**Sales Offices:** Atlanta, Chicago, Detroit, Los Angeles  
**Foreign Offices:** Belgium, Canada, England, Korea, Switzerland, France, Germany, Hong Kong, Japan

**GRACO INC. P.O. BOX 1441 MINNEAPOLIS, MN 55440-1441**

PRINTED IN U.S.A. 308-878 May 1998