

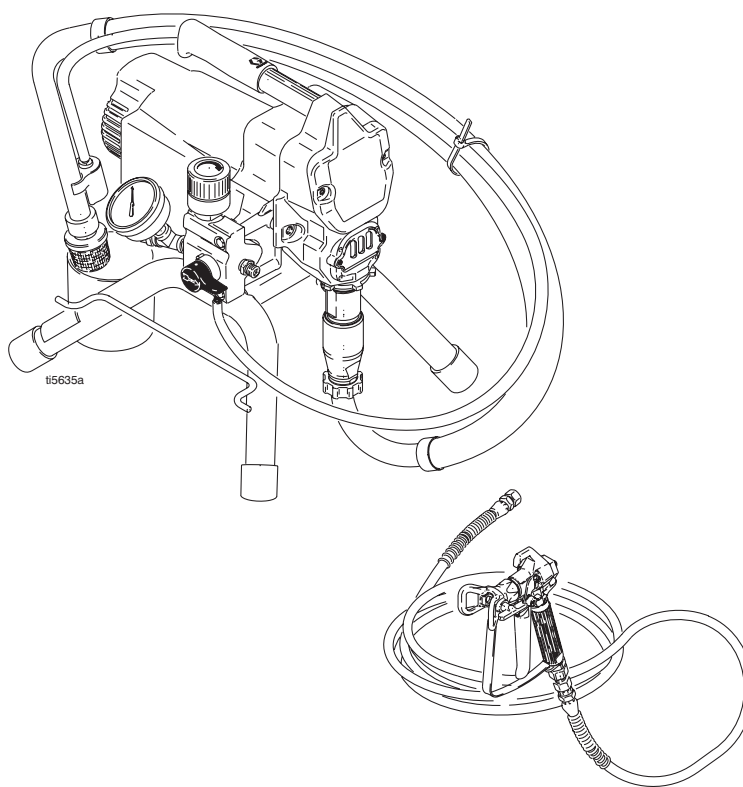
Parts



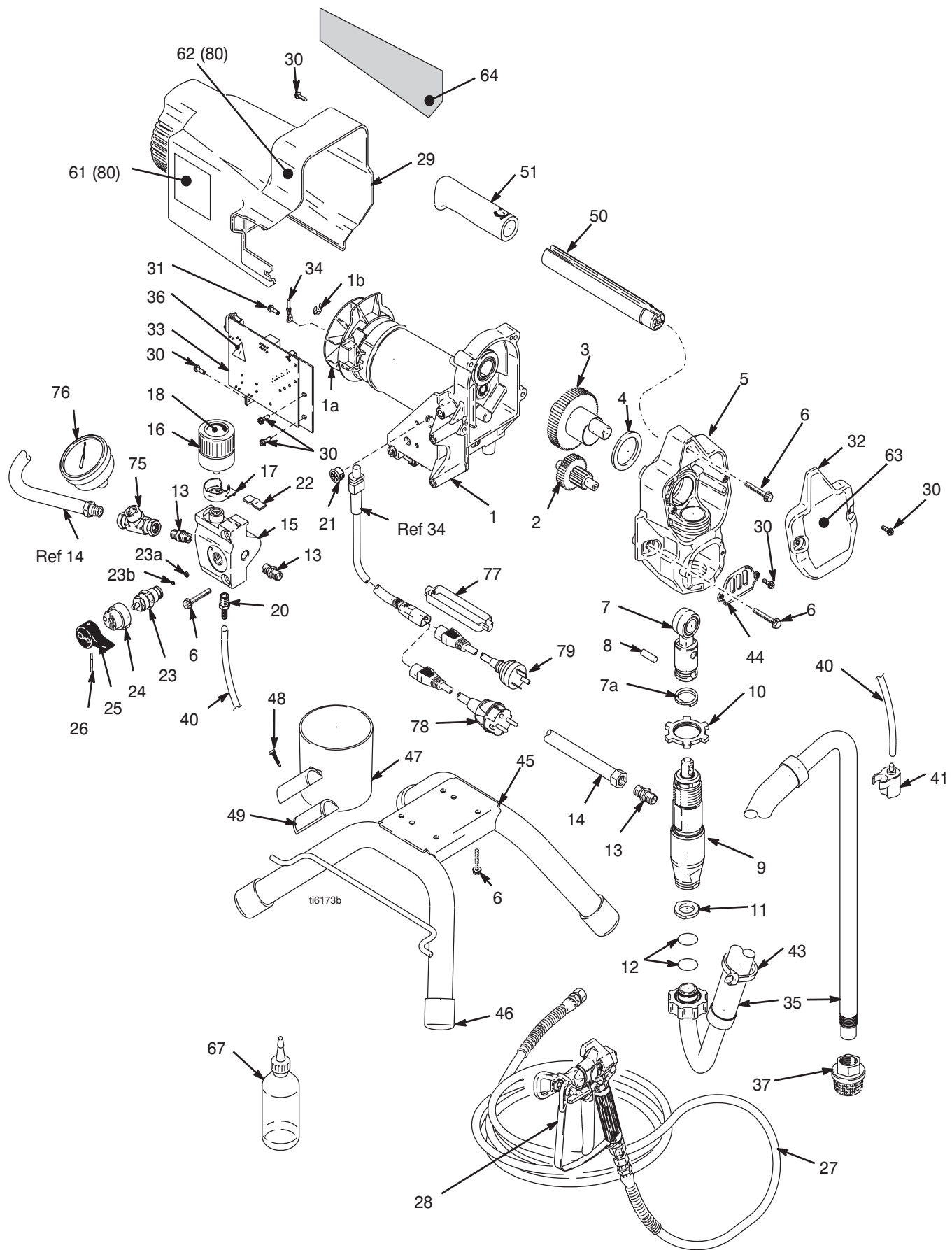
390™ Airless Sprayer

Model 248808

310878B



PROVEN QUALITY. LEADING TECHNOLOGY.



Parts

| F/N | Item | Description | Qty | F/N | Item | Description | Qty |
|-----|--------|---|-----|-----|---------|---|-----|
| 1❖ | 249041 | MOTOR, electric, 240V, includes 1a, 1b | 1 | 32 | 249046 | COVER, front, includes 30, 63 | 1 |
| 1a | 249043 | FAN, motor | 1 | 33‡ | 249053 | CONTROLBOARD, 240V | 1 |
| 1b | 119653 | RING, retaining | 1 | 34 | 15B471 | CORD, power, requires 77, 78, & 79 | 1 |
| 2 | 249194 | GEAR, reducer | 1 | 35 | 249050 | HOSE, suction set, includes 11, 12, & 37 | 1 |
| 3 | 249195 | GEAR, crankshaft, includes 4 | 1 | 36◆ | 189930 | LABEL, caution | 1 |
| 4 | 180131 | BEARING, thrust | 1 | 37 | 246385 | STRAINER, 7/8-14 unf | 1 |
| 5 | 249049 | HOUSING, drive, includes 6, 30, & 44 | 1 | 40 | 249051 | KIT, tube, drain, includes 20, 41, & 43 | 1 |
| 6 | 117493 | SCREW, mach, hex washer hd | 11 | 41 | 244035 | DEFLECTOR, barbed | 1 |
| 7 | 287053 | ROD, connecting, includes 7a & 8 | 1 | 43 | 114958 | STRAP, tie | 1 |
| 7a | 196750 | SPRING, retaining | 1 | 44 | 15B589 | COVER, pump rod | 1 |
| 8 | 196762 | PIN, straight | 1 | 45 | 15E823 | FRAME, standmount | 1 |
| 9 | 249127 | PUMP, displacement, includes 13 (manual 309250) | 1 | 46 | 112759 | CAP, tubing | 4 |
| 10 | 195150 | NUT, jam, pump | 1 | 47 | 15B513 | CUP, suction/drain | 1 |
| 11 | 115099 | WASHER, garden hose | 1 | 48 | 115723 | SCREW, drill, hex washer head | 1 |
| 12 | 117559 | O-RING | 2 | 49 | 15E713 | ADAPTER, cup, tube, 1 inch | 1 |
| 13 | 162453 | FITTING, (1/4 npsm X 1/4 npt) | 3 | 50 | 249048 | HANDLE, includes 6, 51 | 1 |
| 14 | 287003 | HOSE, cpld | 1 | 51 | 116139 | GRIP, handle | 1 |
| 15 | 15E295 | MANIFOLD, control, pressure | 1 | 61◆ | 195813 | LABEL, safety | 1 |
| 16 | 248929 | CONTROL, pressure, 240 V, includes 17, 21, & 22 | 1 | 62◆ | 195792 | LABEL, warning | 1 |
| 17 | 15E794 | CAP, wire, control, pressure | 1 | 63 | 15E826 | LABEL, front | 1 |
| 18 | 15F399 | LABEL, control | 1 | 64 | 15E827 | LABEL, side | 1 |
| 20 | M70809 | FITTING | 1 | 67 | 206994 | FLUID, TSL, 4 oz | 1 |
| 21 | 115756 | BUSHING | 1 | 75 | 119783 | TEE, swivel | 1 |
| 22 | 119723 | TAPE, foam | 1 | 76 | 115523 | GAUGE, pressure, fluid | 1 |
| 23 | 235014 | VALVE, drain, includes 23a, 23b | 1 | 77 | 195551 | RETAINER, plug, adapter, requires 78, & 79) | 1 |
| 23a | 111699 | GASKET, seat | 1 | 78 | 242001 | CORD, set, adapter, Europe, requires 34, 77, & 79 | 1 |
| 23b | 187615 | SEAT, valve | 1 | 79 | 242005 | CORD, set, requires 34, 77, & 78) | 1 |
| 24 | 224807 | BASE, valve | 1 | 80 | 243308 | LABEL, set, ES International | 1 |
| 25 | 187625 | HANDLE, valve, drain | 1 | | ‡119688 | FUSE, replacement | |
| 26 | 111600 | PIN, grooved | 1 | | ❖249042 | KIT, brush, motor, replacement | |
| 27 | 240794 | HOSE, cpld, 1/4x 50' | 1 | | | | |
| 28 | 246233 | GUN, FTX, contractor (manual 309639) | 1 | | | | |
| 29 | 249044 | KIT, shield, motor, includes 30, 61, 62, & 64 | 1 | | | | |
| 30 | 117501 | SCREW, machine, hex washer head | 9 | | | | |
| 31 | 115498 | SCREW, mch, slot, hex, wash hd | 1 | | | | |

◆ Replacement Danger and Warning labels, tags, and cards are available at no cost.

TO PLACE AN ORDER, contact your Graco distributor, or call **1-800-690-2894** to identify the nearest distributor. All written and visual data contained in this document reflects the latest product information available at the time of publication. Graco reserves the right to make changes at any time without notice.

Graco Headquarters: Minneapolis
International Offices: Belgium, China, Japan, Korea

GRACO INC. P.O. BOX 1441 MINNEAPOLIS, MN 55440-1441

www.graco.com

Printed in USA 310878B

1/2005 Rev. 2/2005