

# Motor Brush Repair Kit 258688

313858A




**- For servicing the fluid pump motor or the compressor motor on the  
256842 (120 Volt) FinishPro 290 -**



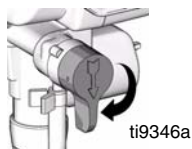
### Important Safety Instructions

For detailed instructions and warnings, see sprayer manual.



### Pressure Relief Procedure

						
<p>To reduce the risk of injury from injection, always follow this procedure when instructed to relieve pressure, stop spraying, service equipment, or install or clean spray tip.</p>						

1. Set power/function selection switch to OFF and unplug sprayer.
2. Turn pressure knob to lowest setting.
3. Hold gun to side of grounded metal pail. Trigger the gun to relieve pressure.
4. Turn prime valve to PRIME.

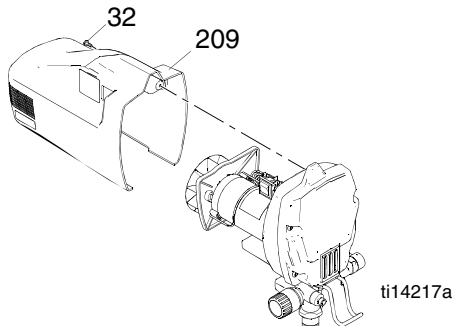


*If you suspect spray tip or hose is completely clogged, or that pressure has not been fully relieved after following these steps, **VERY SLOWLY** loosen tip guard retaining nut or hose end coupling to relieve pressure gradually, then loosen completely. Clear tip or hose obstruction.*

							
<p>Do not touch brushes, leads, springs, or brush holders while sprayer is plugged in to reduce risk of electric shock and serious injury.</p>							

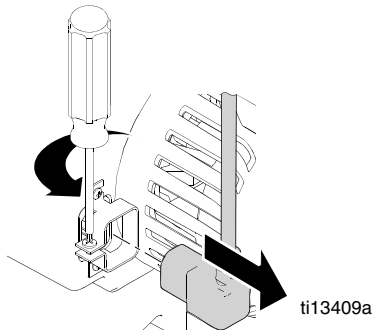
1. **Relieve Pressure** (see cover) and unplug sprayer.

2. To replace brushes on the paint pump motor, remove two screws (32) and motor shield (209). Go to step 4.

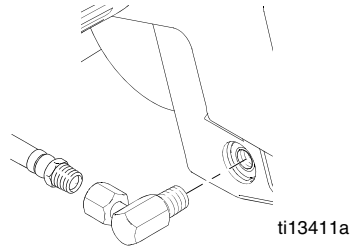


3. To replace brushes on the air compressor:

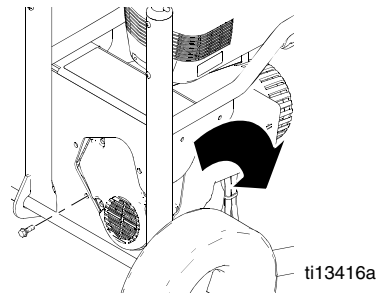
a. Loosen IEC cord clamp screw and remove IEC plug from compressor.



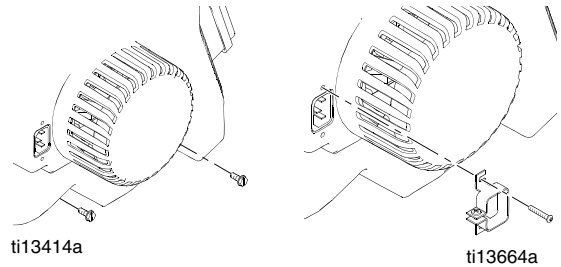
b. Remove air hose from compressor and remove outlet fitting from compressor.



c. Remove four screws. Tip compressor assembly down and forward to remove from sprayer. Place compressor on workbench.




d. Remove two screws and IEC cord clamp. Remove two screws and compressor shroud.




#### 4. Motor Brush Replacement:


##### Removal

 **NOTE:** Replace brushes worn to less than 1/4 in. (6 mm). Brushes wear differently on each side of motor, check both sides.

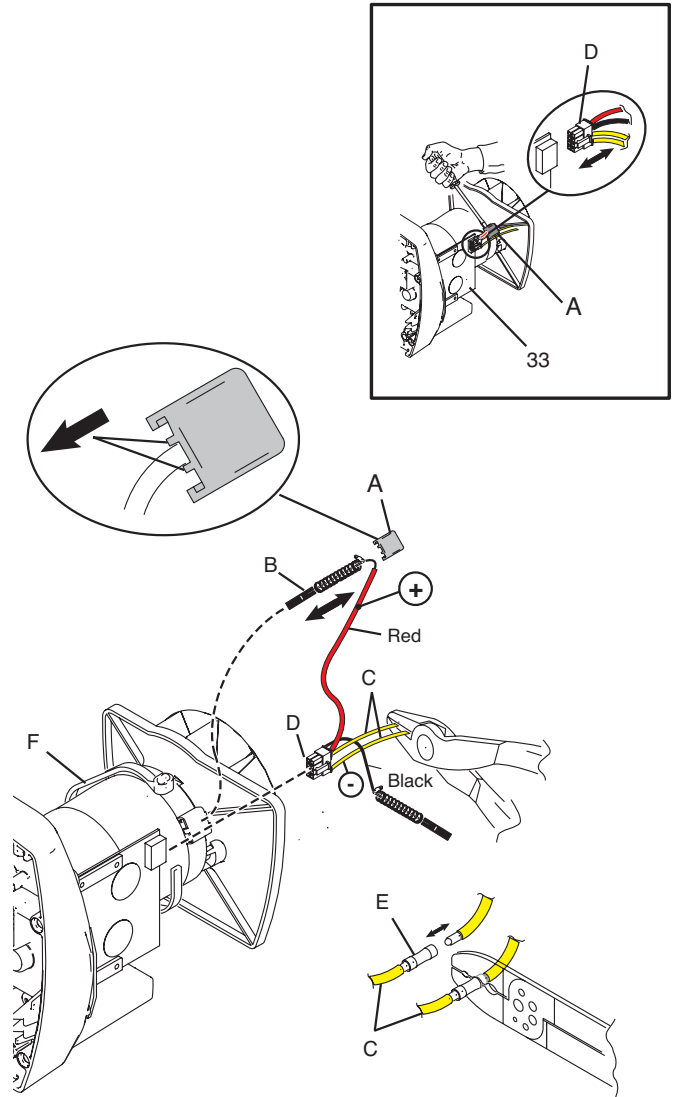
- Disconnect motor connector (D) from control board (33).
- Cut tie wrap (F) if present.
- Locate two yellow wires (C) (thermal leads). Cut each yellow wire at the center (note red and black wire location).
- Use a flat screwdriver to pry off two brush caps (A). Remove brushes (B) from motor (discard old brush harness).
- While rotating fan by hand, use compressed air to blow air into positive (top) brush holder to remove brush dust.

 **NOTE:** To contain the dust, turn on your shop vac. Place the end of the hose over the negative (lower) brush holder while blowing compressed air into the positive (top) brush holder.

##### Installation

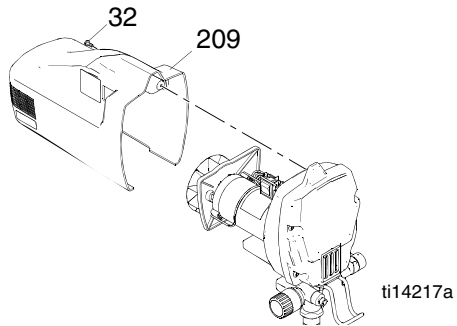
 **NOTE:** Use all new parts included in your brush kit. Do not reuse old parts if new replacement parts are provided.

- With wires facing toward front of motor, install new brushes (B) in motor. Be sure to install positive (red) brush lead and negative (black) brush lead as noted in removal step 4.
- Push each cap (A) into place over brush. Orient each cap with two projections on either side of brush lead. You will hear a “snap” when cap is securely in place.
- Use a wire stripper to remove wire insulation approximately 1/4 in. (6 mm) from end of each yellow wire (C) to the motor.
- Insert stripped end into end of a butt splice (E) on new brush assembly.
- Use a crimping tool to squeeze ends of butt splice (E) tightly around each wire. Pull gently on each wire to be sure it will not pull out of the butt splice.
- Use new tie wrap (F) from kit to wrap tie around motor and wires only. Trim off excess.
- Reconnect motor connector (D) to control board (33).



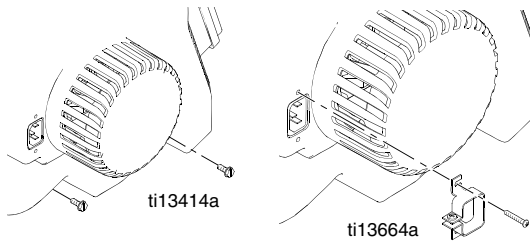
ti14216a

5. For the paint pump, install the motor shield (209) with two screws (32).

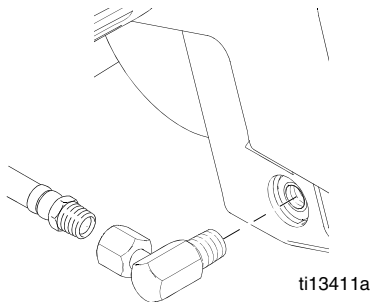


6. For the air compressor:

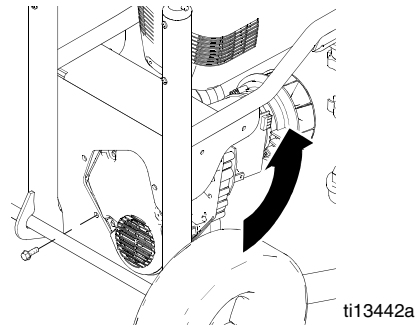
- a. Install compressor shroud with two screws. Install IEC cord clamp with two screws.



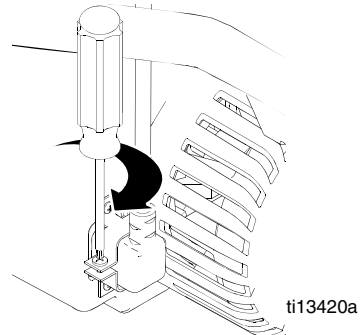
- b. Install air outlet fitting.



- c. Tip compressor assembly up and back into frame. Install four screws.



- d. Install IEC connector and tighten cord clamp. Install air hose to outlet fitting. Make sure cord is pushed in as far as it will go to ensure a good connection.



*All written and visual data contained in this document reflects the latest product information available at the time of publication. Graco reserves the right to make changes at any time without notice.*

*This manual contains English. MM 313858*

**Graco Headquarters:** Minneapolis  
**International Offices:** Belgium, China, Japan, Korea

**GRACO INC. P.O. BOX 1441 MINNEAPOLIS, MN 55440-1441**

Copyright 2009, Graco Inc. is registered to ISO 9001

[www.graco.com](http://www.graco.com)