

## Dyna-Star® HP or HF Pump 35# Pail Kit and Follower Plate

332517B

EN

For adapting a 60# Dyna-Star Pump for use with a 35# bucket. For professional use only.



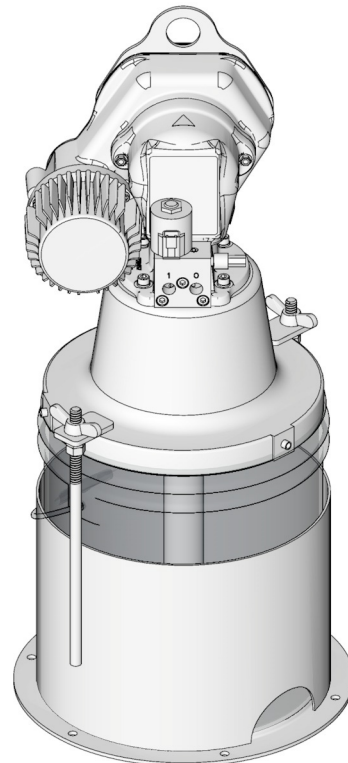
### Important Safety Instructions

Read all warnings and instructions in this manual and in the Dyna-Star HP or HF Pump instruction manual. Save all instructions.

### Part No.:












35# Pail Kit - 77X513

35# Follower Plate - 77X510



# Warnings

The following warnings are for the setup, use, grounding, maintenance, and repair of this equipment. The exclamation point symbol alerts you to a general warning and the hazard symbols refer to procedure-specific risks. When these symbols appear in the body of this manual or on warning labels, refer back to these Warnings. Product-specific hazard symbols and warnings not covered in this section may appear throughout the body of this manual where applicable.

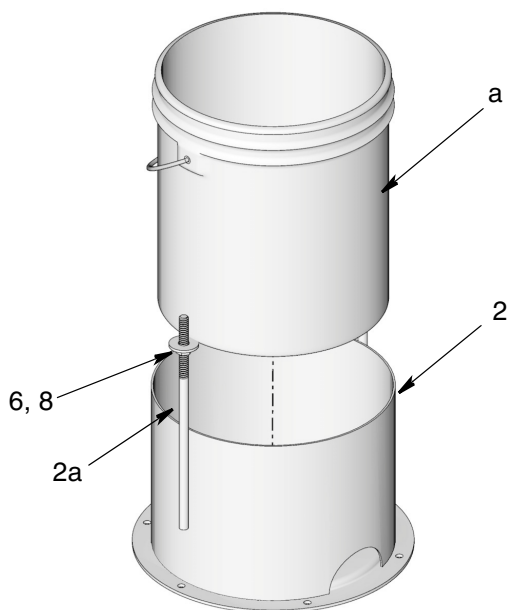
 <b>WARNING</b>	
 	<p><b>ELECTRIC SHOCK HAZARD</b></p> <p>This equipment must be grounded. Improper grounding, setup, or usage of the system can cause electric shock.</p> <ul style="list-style-type: none"> <li>• Turn off and disconnect power at main switch before disconnecting any cables and before servicing or installing equipment.</li> <li>• Connect only to grounded power source.</li> <li>• All electrical wiring must be done by a qualified electrician and comply with all local codes and regulations.</li> </ul>
  	<p><b>SKIN INJECTION HAZARD</b></p> <p>High-pressure fluid from dispensing device, hose leaks, or ruptured components will pierce skin. This may look like just a cut, but it is a serious injury that can result in amputation. <b>Get immediate surgical treatment.</b></p> <ul style="list-style-type: none"> <li>• Do not point dispensing device at anyone or at any part of the body.</li> <li>• Do not put your hand over the fluid outlet.</li> <li>• Do not stop or deflect leaks with your hand, body, glove, or rag.</li> <li>• Follow the <b>Pressure Relief Procedure</b> when you stop dispensing and before cleaning, checking, or servicing equipment.</li> <li>• Tighten all fluid connections before operating the equipment.</li> <li>• Check hoses and couplings daily. Replace worn or damaged parts immediately.</li> </ul>
	<p><b>BURN HAZARD</b></p> <p>Equipment surfaces and fluid that's heated can become very hot during operation. To avoid severe burns:</p> <ul style="list-style-type: none"> <li>• Do not touch hot fluid or equipment.</li> </ul>
 	<p><b>MOVING PARTS HAZARD</b></p> <p>Moving parts can pinch, cut or amputate fingers and other body parts.</p> <ul style="list-style-type: none"> <li>• Keep clear of moving parts.</li> <li>• Do not operate equipment with protective guards or covers removed.</li> <li>• Pressurized equipment can start without warning. Before checking, moving, or servicing equipment, follow the <b>Pressure Relief Procedure</b> and disconnect all power sources.</li> </ul>
 	<p><b>PRESSURIZED EQUIPMENT HAZARD</b></p> <p>Over-pressurization can result in equipment rupture and serious injury.</p> <ul style="list-style-type: none"> <li>• A pressure relief valve is required at each pump outlet.</li> <li>• Follow <b>Pressure Relief Procedure</b> in this manual before servicing.</li> </ul>

# Installation

Reference numbers used in the following instructions correspond to the Parts table provided on page 6. Parts identified with an alpha character are user provided or already installed components.

## First Time Installation

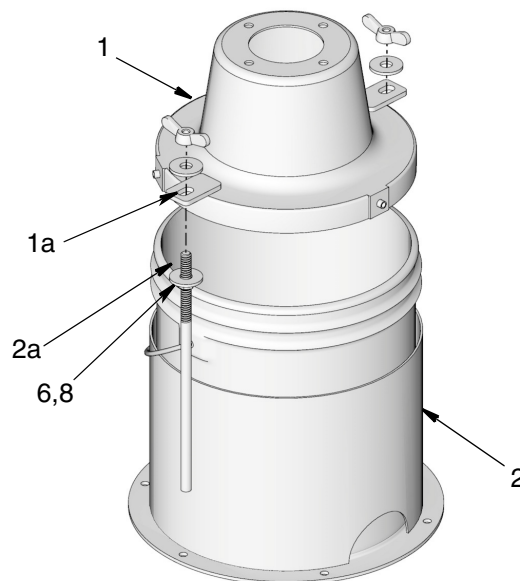
1. Remove screws (4), washers (5) and gasket (3) from cover (1). Set these parts aside to use for reassembly.
2. Remove wing nuts (9) and washers (6). Set these parts aside to use for reassembly.
3. Remove and discard cover from grease bucket (a) (user supplied).
4. (If used) press follower plate into grease and firmly press on it to remove all air pockets.
5. Place grease bucket (a) in base (2) (FIG. 1).



**FIG. 1**

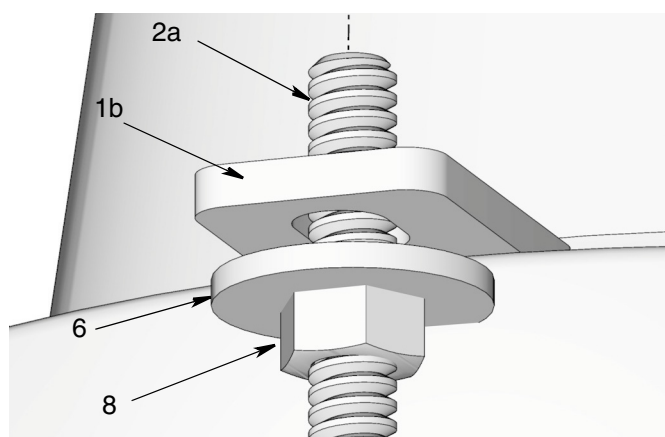
6. Adjust location of washers (6) and nuts (8) on base rods (2a) (FIG. 1) up or down until they are as close as possible to level with the top of the bucket or a little below it (FIG. 2).

7. Install cover (1) on top of bucket. The ends of base rods (2a) should pass through the holes (1a) in the cover brackets as shown in FIG. 2.



**FIG. 2**

8. Adjust nuts (6) and washers (8) on each base rod (2a) until washer is snugged tight to the bottom of the cover bracket (1b).
  - a. turn nuts (8) clockwise to lower the nut and washer height.
  - b. Turn nuts (8) counter-clockwise to raise the nut and washer height.



**FIG. 3**

Installation

9. Secure cover (1) to base (2) using washers (8) and wing nuts (9) over the end of the base rod (2a) (FIG. 4). Hand tighten wing nuts securely.

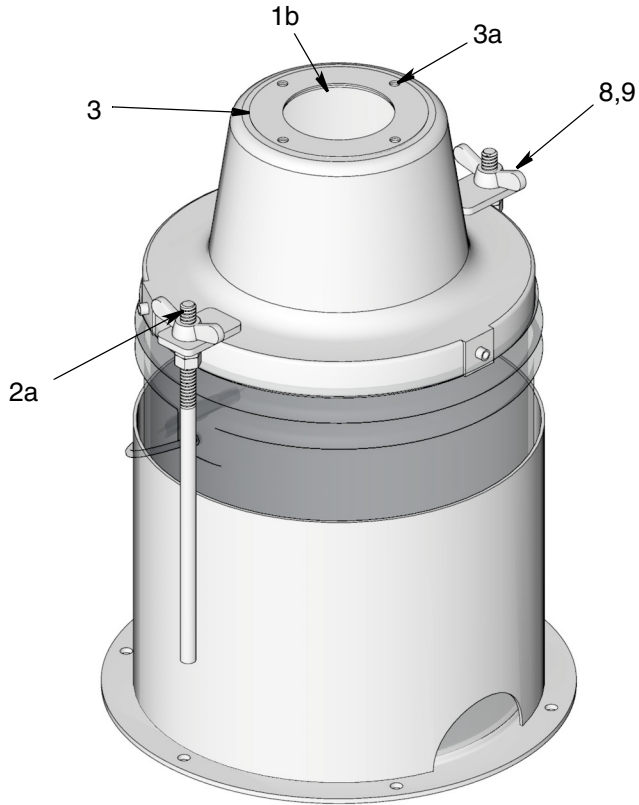


FIG. 4

10. Position gasket (3) over hole (1b) in the center of cover (1). Align holes (3a) in gasket (3) with holes in the top of the cover (FIG. 4).
11. Loosen bolts (b) and remove cover (c) from Dyna-Star pump (FIG. 2).

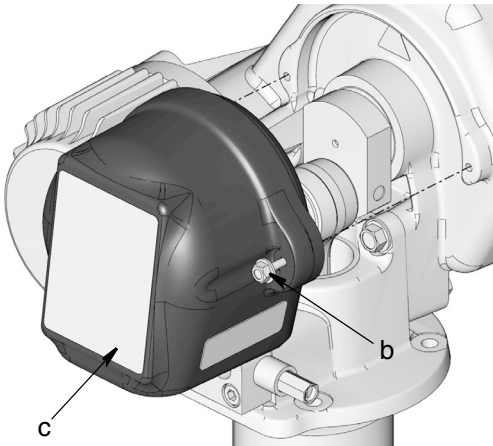


FIG. 5

12. Install pump down tube (d) through hole (1b) in the middle of cover (1), through hole in follower plate (if used) and into bottom of bucket.

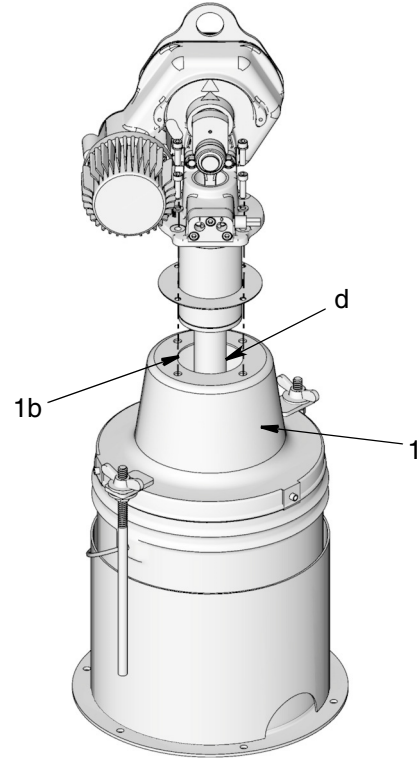


FIG. 6

13. Replace screws (4) and washers (5) and wrench tighten securely.

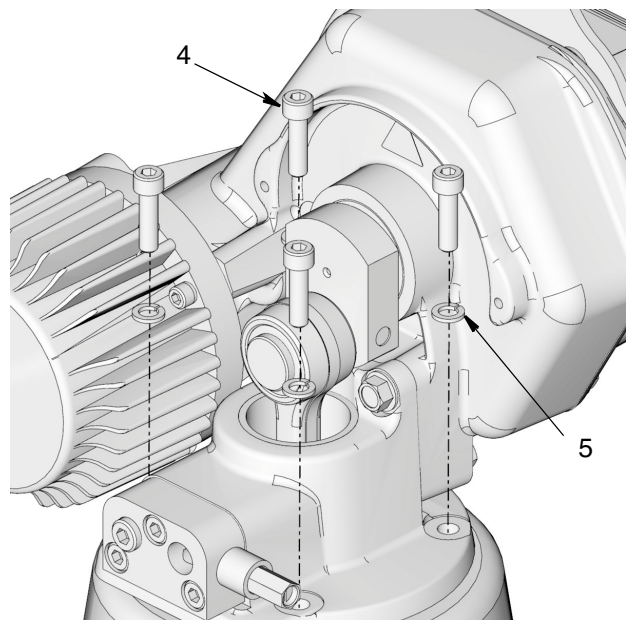


FIG. 7

- Reinstall cover (c) using bolts (b). Use a wrench to tighten bolts securely.

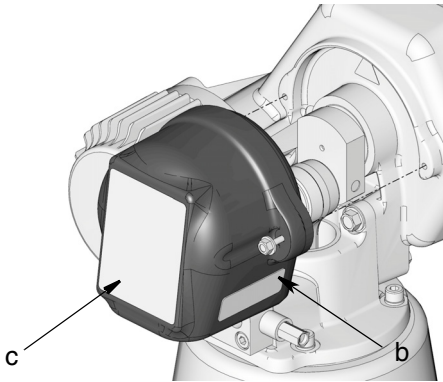


FIG. 8

- Complete pump installation. See Dyna-Star HP or HF Pump instruction manual for complete installation instructions.

## Pressure Relief



Follow the Pressure Relief Procedure whenever you see this symbol.



This equipment stays pressurized until pressure is manually relieved. To help prevent serious injury from pressurized fluid, such as skin injection, splashing fluid and moving parts, follow the Pressure Relief Procedure when you stop dispensing and before cleaning, checking, or servicing the equipment.

To relieve pressure in the system, use two wrenches working in opposite directions on pump outlet fitting to **slowly loosen fitting only** until fitting is loose; no more lubricant or air is leaking from fitting as shown in FIG. 9.

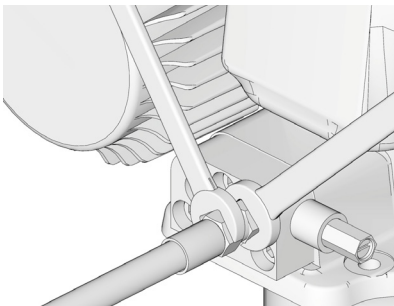


FIG. 9

## Changing Grease Bucket



**NOTE:** The pump does not have to be removed from the cover to change the empty grease bucket.

### When grease bucket is empty:

- Disconnect Dyna-Star pump from main power source.
- Relieve pressure** (see Pressure Relief procedure provided or in your pump manual).
- Unscrews wing nuts (9) and remove wing nuts and washers (8) from base rod (2a).

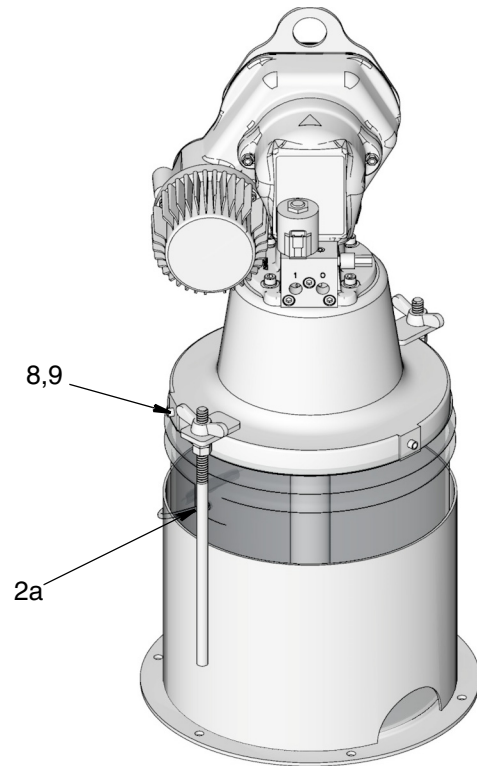


FIG. 10



### HEAVY EQUIPMENT HAZARD

Lifting or moving heavy equipment incorrectly can cause serious injury. To avoid serious injuries, such as muscle strain or back injuries, when moving pump always use a lifting aid secured to the pump lift ring . See Technical Data, included in the pump instruction manual for pump weight information.

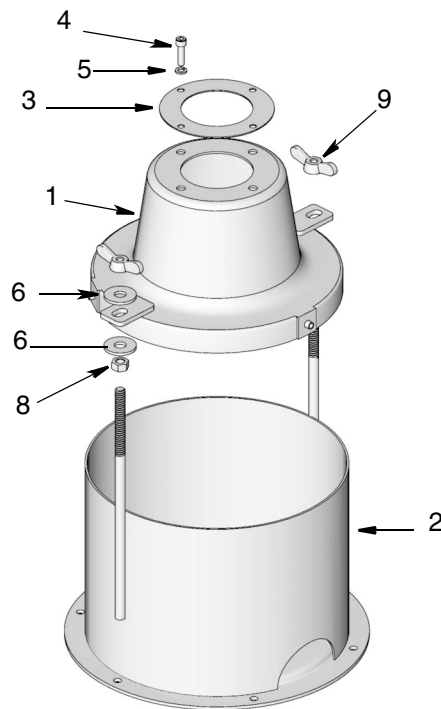
4. Remove cover and pump assembly from top of empty bucket (a).
5. Remove follower plate (if used) from inside bucket.
6. Remove empty bucket from base (2). Discard bucket according to all applicable safety standards.
7. Complete installation of new bucket following Steps 3 - 9, pages 3 - 4.
8. Complete pump installation. See Dyna-Star HP or HF Pump instruction manual for complete installation instructions.

## Parts: 77X513

Ref.	Description	Qty
1	COVER	1
2	BASE	1
3	GASKET, pump	1
4	SCREW, cap, sch	4
5	WASHER, lock spring	4
6	WASHER, M-12	4
8	NUT, hex	2
9	NUT, wing, M12	2

### Accessories

35# Follower Plate: 77X510



## Graco Information

For the latest information about Graco products, visit [www.graco.com](http://www.graco.com).

**TO PLACE AN ORDER**, contact your Graco distributor or call to identify the nearest distributor.

**Phone:** 612-623-6928 or **Toll Free:** 1-800-533-9655, **Fax:** 612-378-3590

*All written and visual data contained in this document reflects the latest product information available at the time of publication. Graco reserves the right to make changes at any time without notice.*

*For patent information, see [www.graco.com/patents](http://www.graco.com/patents).*

Original instructions. This manual contains English. MM 332517

**Graco Headquarters:** Minneapolis  
**International Offices:** Belgium, China, Japan, Korea

**GRACO INC. AND SUBSIDIARIES • P.O. BOX 1441 • MINNEAPOLIS MN 55440-1441 • USA**

**Copyright 2013, Graco Inc. All Graco manufacturing locations are registered to ISO 9001.**

[www.graco.com](http://www.graco.com)  
August 2013