

## InvisiPac™ HM25 and HM50 Tank-Free™ Hot Melt Delivery System

333348C

# MZLP Fuses Kits

EN

For replacing fuses on an MZLP installed on the InvisiPac™ HM25 and HM50 Tank-Free™ Hot Melt Delivery System. For professional use only.

Not approved for use in explosive atmospheres or hazardous locations.



### Important Safety Instructions

Read all warnings and instructions in this manual and in the InvisiPac system manual 333347 or 3A2347. Save all instructions.

## Parts

### Kit 24P859

Ref	Part	Description	Qty
1	---	FUSE, 250V, 8A, fast acting, clear	8
2	---	FUSE, 250V, 16A, white ceramic	2
5	---	TOOL, puller, fuse	1

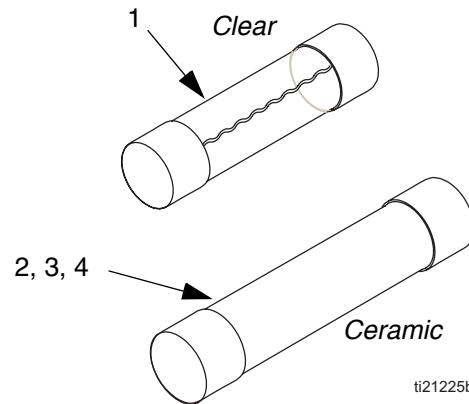
### Kit 24X479

Ref	Part	Description	Qty
1	---	FUSE, 250V, 8A, fast acting, ceramic	8
2	---	FUSE, 250V, 16A, white ceramic	2
5	---	TOOL, puller, fuse	1

### Kit 24X480

Ref	Part	Description	Qty
3	---	FUSE, 250V, 8A, fast acting, ceramic	8
4	---	FUSE, 250V, 25A, white ceramic	2
5	---	TOOL, puller, fuse	1

--- Not for sale.



NOTE: Not to scale.

### Kit 24V289

Ref	Part	Description	Qty
3	---	FUSE, 250V, 8A, fast acting, clear	8
4	---	FUSE, 250V, 25A, white ceramic	2
5	---	TOOL, puller, fuse	1

--- Not for sale.

# Replace MZLP Fuses

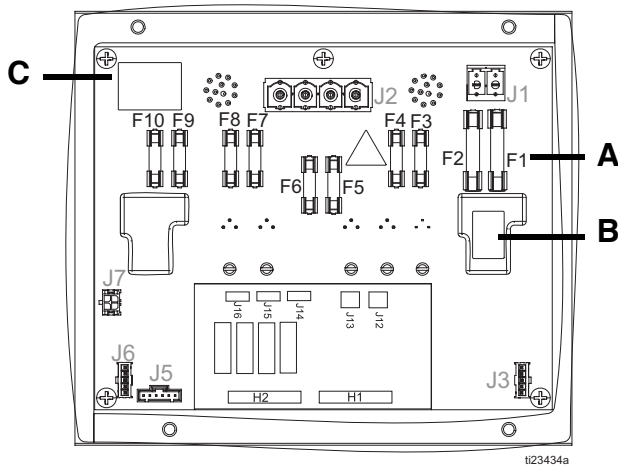
## MZLP Identification

To prevent electric shock, turn off and disconnect power at main switch before disconnecting any cables and before servicing or installing equipment.					

**NOTICE**

To prevent system damage, always use fast acting fuses. Fast acting fuses are required for short-circuit protection.

Key	24R234	24V510
<b>A</b>	F1 and F2 fuses are physically the same size as F3-F10	F1 and F2 fuses are physically larger than F3-F10
<b>B</b>	---	Blue sticker on relay
<b>C</b>	Marked 24N568	Marked 24V133



**FIG. 1: MZLP ID and Fuse Locations**

## Fuse Kits

Kit	MZLP	Description
24P859	24R234	Includes standard clear fuses.
24X479		Includes ceramic fuses used for food industries.
24V289	24V510	Includes standard clear fuses.
24X480		Includes ceramic fuses used for food industries.

1. Turn main power switch OFF.
2. Remove electrical enclosure front access door.
3. Use the non-conductive fuse puller tool (5) to remove the blown fuse.

**NOTICE**

Using an improper tool, such as screw drivers or pliers may break glass on fuse.

4. Use the non-conductive fuse puller tool (5) to install the new fuse.
5. Install electrical enclosure front access door.

All written and visual data contained in this document reflects the latest product information available at the time of publication. Graco reserves the right to make changes at any time without notice.

For patent information, see [www.graco.com/patents](http://www.graco.com/patents).

Original instructions. This manual contains English. MM 333348

**Graco Headquarters:** Minneapolis  
**International Offices:** Belgium, China, Japan, Korea

**GRACO INC. AND SUBSIDIARIES • P.O. BOX 1441 • MINNEAPOLIS MN 55440-1441 • USA**

**Copyright 2013, Graco Inc. All Graco manufacturing locations are registered to ISO 9001.**

[www.graco.com](http://www.graco.com)  
 Revision C, March 2015