

LineLazer 250_{MMA} 98:2 Second Gun Kit 17K319

3A3476A
EN

For installation of a second gun on the LineLazer 250_{MMA} 98:2.



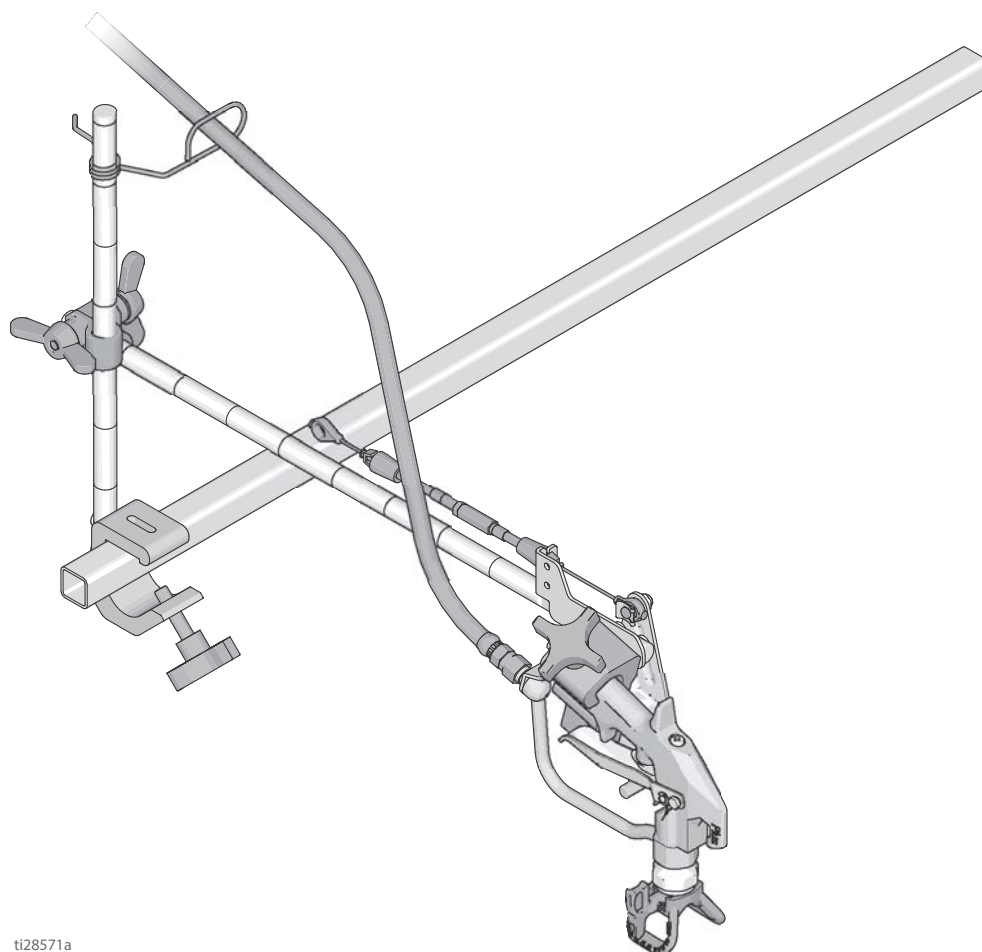
Important Safety Instructions

Read all warnings and instructions in this manual and the equipment manual.
Be familiar with the controls and the proper usage of the equipment.
Save these instructions.

3000 psi (20.7 MPa, 207 bar) Maximum Working Pressure

Related Manual

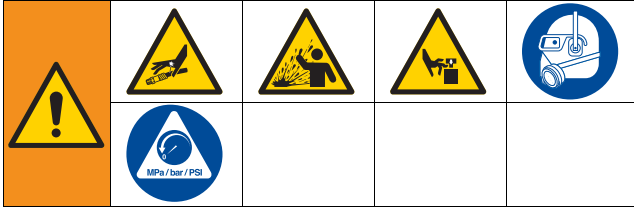
Operation, Parts– 3A3111



ti28571a

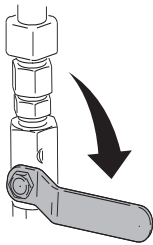
Pressure Relief Procedure

Before servicing the sprayer pump pressure must be relieved.



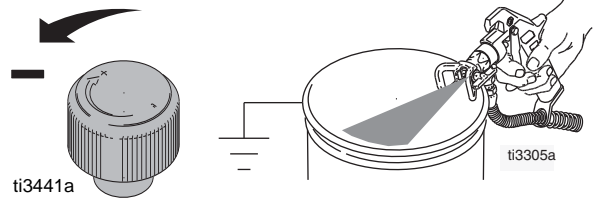
This equipment stays pressurized until pressure is manually relieved. To help prevent serious injury from pressurized fluid, such as skin injection, splashing fluid and moving parts, follow the Pressure Relief Procedure when you stop spraying and before cleaning, checking, or servicing the equipment.

1. Perform **Grounding Procedure** if using flammable materials. Refer to LineLazer operation manual procedure.
2. Set pump valve **OFF**. Turn engine **OFF**.

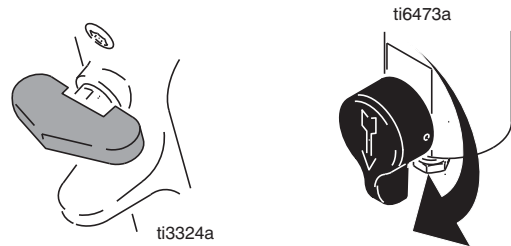


ti6740a

3. Turn pressure control to lowest setting. Trigger gun to relieve pressure. It may be necessary to remove gun from the arm before triggering it into a bucket.



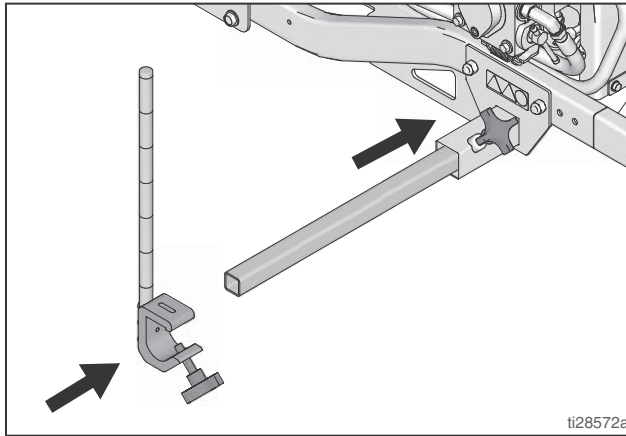
4. Engage gun trigger safety. Turn prime valve down.



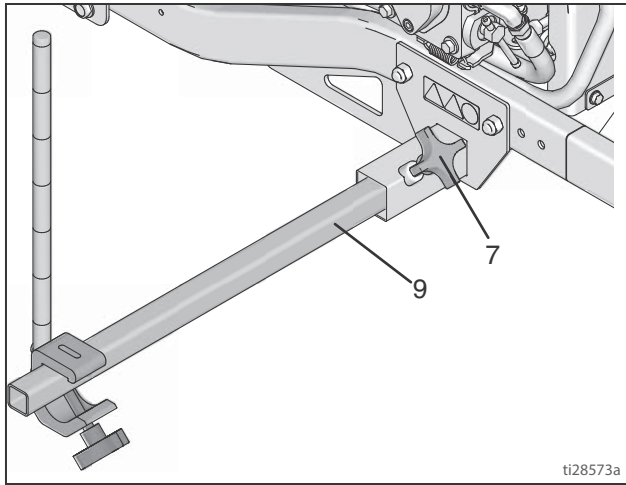
5. If you suspect the spray tip or hose is clogged or that pressure has not been fully relieved:
 - a. **VERY SLOWLY** loosen the tip guard retaining nut or the hose end coupling to relieve pressure gradually.
 - b. Loosen the nut or coupling completely.
 - c. Clear the obstruction in the hose or tip.

Installation

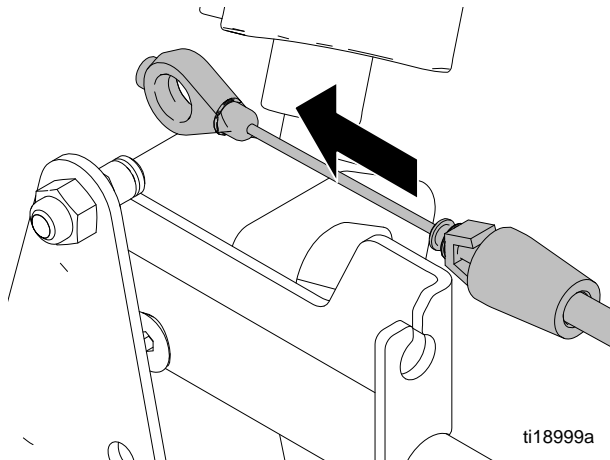
1. Perform **Pressure Relief Procedure**, page 2.
2. Install extension clamp (17J424) and extension support bracket (17J408).



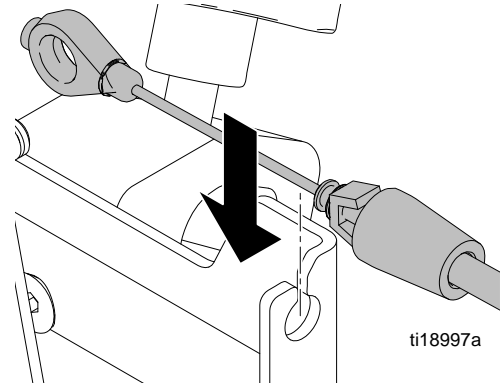
3. Install extension support bracket (9). Tighten extension clamp (7).



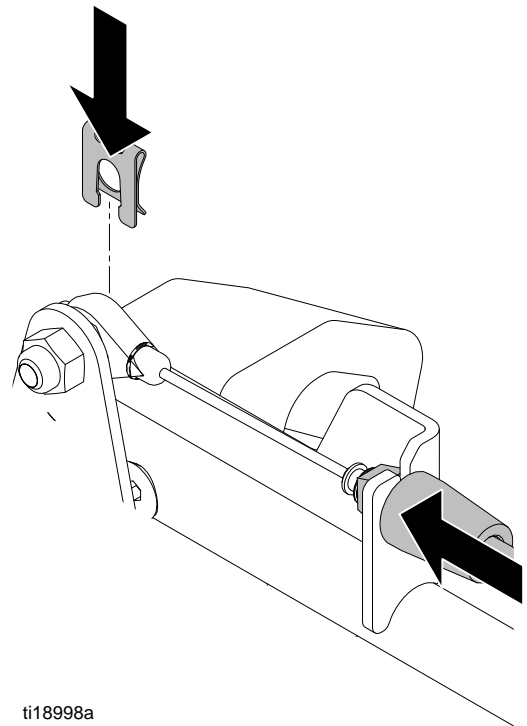
4. Install exposed cable through cable bracket slot.



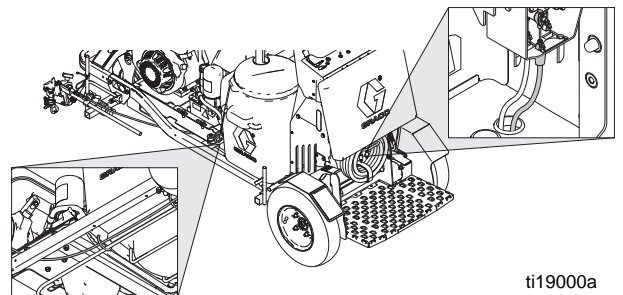
5. Insert plastic cable retainer into cable bracket hole.



6. Install cable end onto trigger plate pin and install clip.

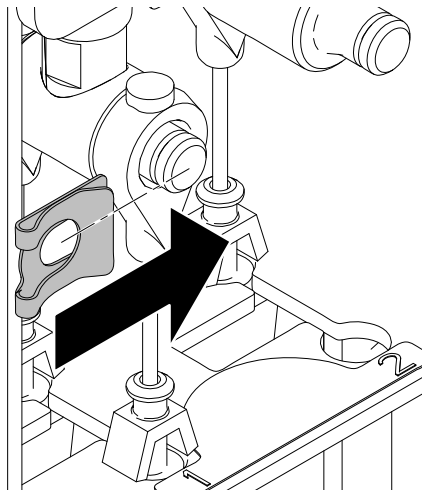


7. Route cable around unit and up through cable holes behind hose mount.



Installation

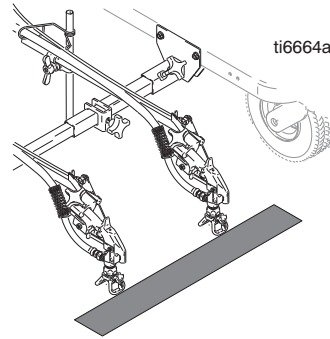
- 8. Route cable end loop through rectangular hole in bracket and insert plastic cable retainer into the actuator bracket. Install cable end onto actuator rod and install clip.



ti18996a

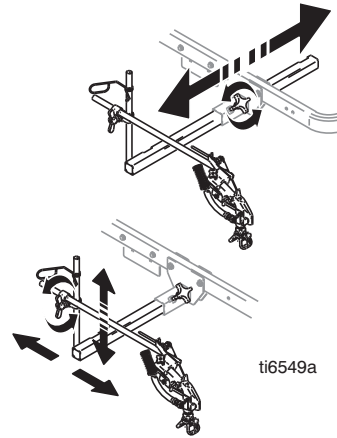
NOTE: Each gun actuator is capable of operating two cables. For second gun installation, attach cable to the unused actuator rod.

- 9. Align guns.



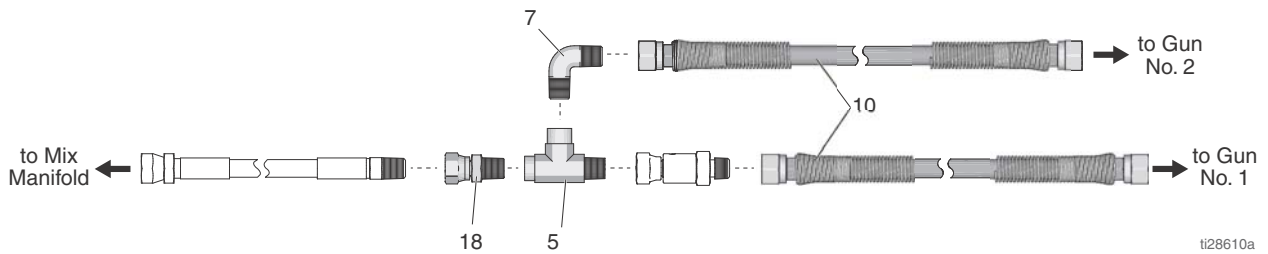
ti6664a

- 10. Position guns (up/down, forward/reverse, left/right).



ti6549a

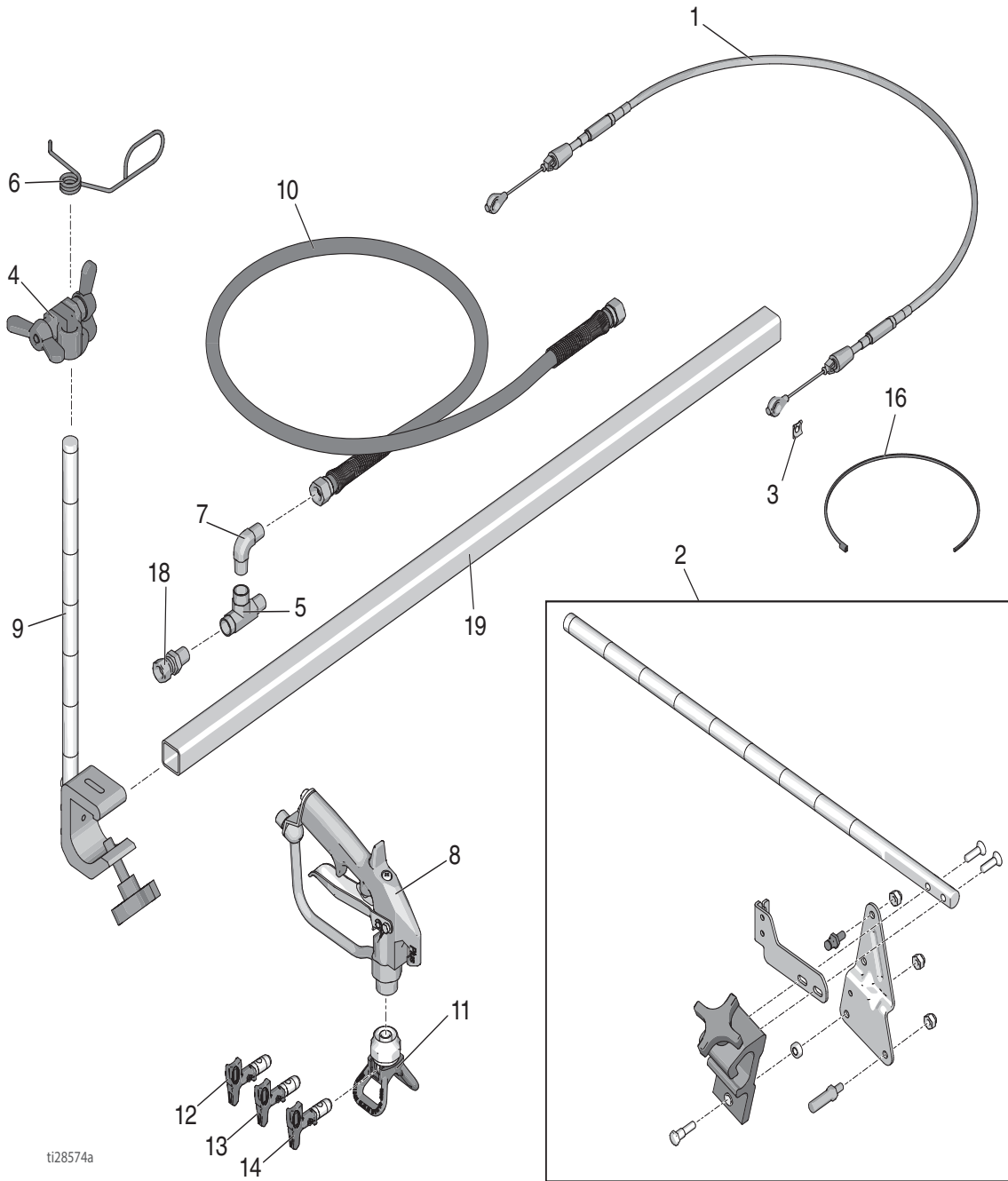
- 11. Connect and route hoses as shown below.



ti28610a

Plumbing the Second Gun

Parts



ti28574a

Ref.	Part	Description	Qty.	Ref.	Part	Description	Qty.
1	16M671	CABLE, gun, solenoid	1	10	249149	HOSE, cpld, 1/4 in. x 22 in.	1
2	24M638	BAR, gun holder, LL V 250 SPS	1	11	243161	GUARD, RAC 5	1
3	126111	RETAINER, clip, external, 8mm	1	12	LL5321	TIP, spray, RAC 5, striping	1
4	24Y645	KIT, clamp	1	13	LL5425	TIP, spray, RAC 5, striping	1
5	556420	FITTING, tee	1	14	LL5627	TIP, spray, RAC 5, striping	1
6	188135	GUIDE, cable	1	15	222385	TAG, warning	1
7	110249	ADAPTER, male elbow 90°	1	16	404989	STRAP, tie	6
8	289605	GUN, spray	1	18	156823	FITTING, swivel	1
9	17J424	BAR, height adjustment, assembly	1	19	17J408	ARM, extension	1

*All written and visual data contained in this document reflects the latest product information available at the time of publication.
Graco reserves the right to make changes at any time without notice.*

For patent information, see www.graco.com/patents.

Original instructions. This manual contains English. MM 3A3476

Graco Headquarters: Minneapolis

International Offices: Belgium, China, Japan, Korea

GRACO INC. AND SUBSIDIARIES • P.O. BOX 1441 • MINNEAPOLIS MN 55440-1441 • USA
Copyright 2016, Graco Inc. All Graco manufacturing locations are registered to ISO 9001.

www.graco.com

Revised A, March 2016