

235636 Repair Kit

For Model 239145 Severe-Duty Displacement Pump

406137F

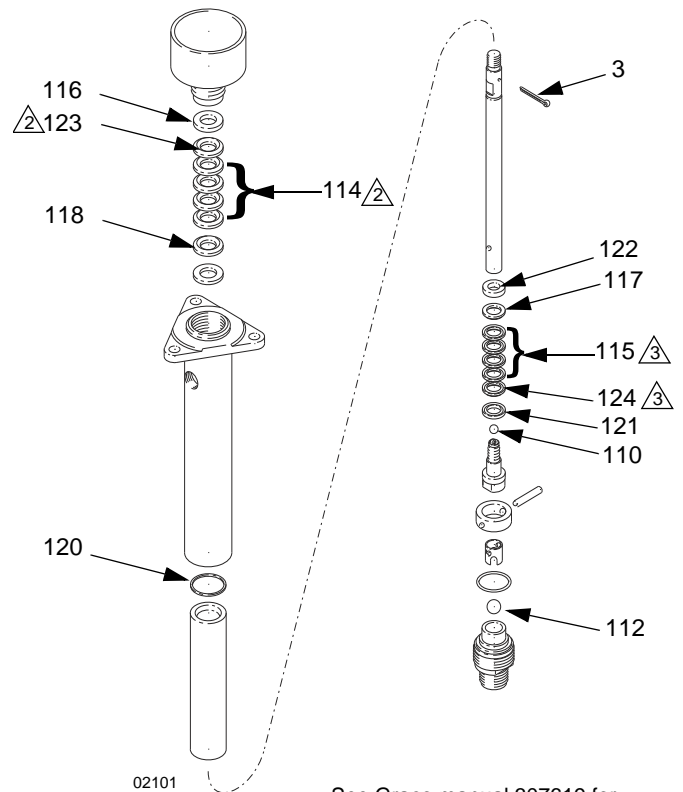
EN



Important Safety Instructions

Read all warnings and instructions in manual 307619. Save those instructions.

| Ref. | Description | Qty. |
|------|--|------|
| 3 | PIN, cotter, SST, 0.12 in. (3.2 mm) x 1.5 in. (38 mm) | 1 |
| 109 | O-RING, PTFE | 1 |
| 110 | BALL, 440C SST, 0.31 in (7.9 mm) dia | 1 |
| 112 | BALL, 440C SST, 0.5 in (13 mm) dia | 1 |
| 114 | V-PACKING, throat, leather | 2 |
| 115 | V-PACKING, piston, leather | 2 |
| 116 | GLAND, throat, female SST | 1 |
| 117 | GLAND, piston, male, SST | 1 |
| 118 | GLAND, throat, male, SST | 1 |
| 120 | GASKET, PTFE | 1 |
| 121 | GLAND, piston, female, SST | 1 |
| 122 | RETAINER, packing, SST | 1 |
| 123 | V-PACKING, throat, PTFE | 2 |
| 124 | V-PACKING, piston, PTFE | 2 |



- ⚠ See Graco manual 307619 for assembly instructions.
- ⚠ Lips of v-packings 114 and 123 must face down.
- ⚠ Lips of v-packings 115 and 124 must face up.

Graco Inc. P.O. Box 1441 Minneapolis, MN 55440-1441

406137 Rev, F 09/2015

Copyright 1992, Graco Inc. is registered to I.S. EN ISO 9001