

Pump Assembly Instructions



Important Safety Instructions

Before beginning, read all warnings and instructions in this manual and in your related equipment manuals. Save all instructions. This manual is only a guide for kit installation. See your EP3/EP4 Hose Pump manual for complete warnings and repair instructions.

EP3/EP4 Hose Pump Assembly

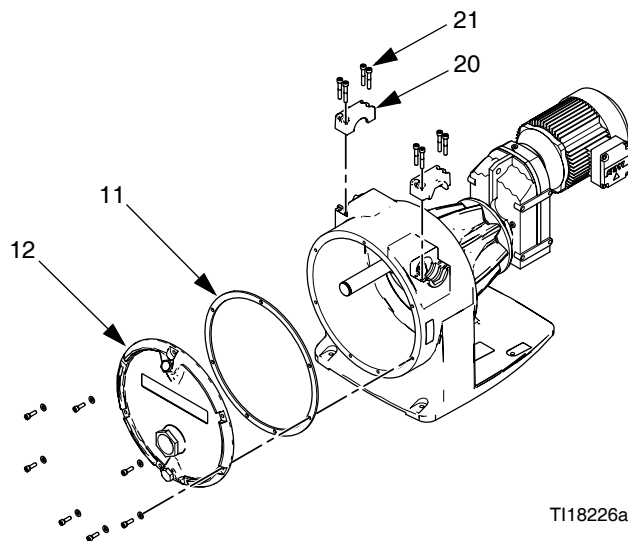
406954B

EN

To assemble the roller kit to an EP3 or EP4 Hose Pump. For professional use only.

NOTE: Parts included in the kit are marked with an asterisk (*). See your EP3/EP4 Hose Pump Repair Manual for a complete list of Kit Part Numbers.

1. Remove the cover (12) and gasket (11).

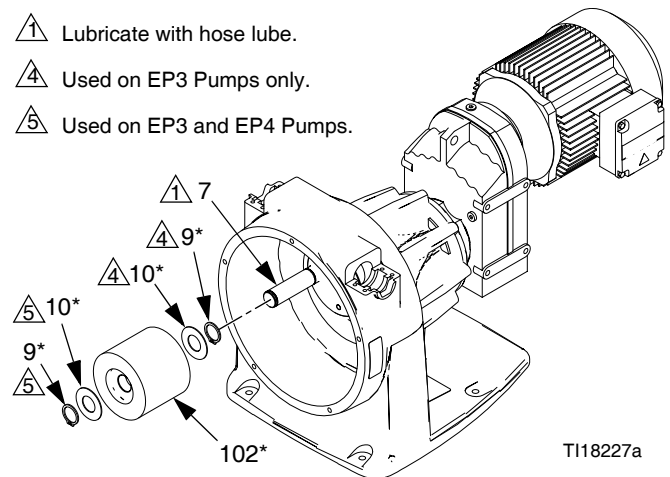


2. Pull the hose out of the bottom of the housing at the 6 o'clock position.
3. Move the eccentric shaft (7) to the 6 o'clock position.

4. Lubricate the eccentric shaft (7) with hose lube. Install the roller (102*), bushings (10*), and roller retaining rings (9*), as shown.

NOTE: EP3 Pumps use two bushings (10) and two retaining rings (9). EP4 Pumps use only one bushing and one ring, placed on the cover side of the roller.

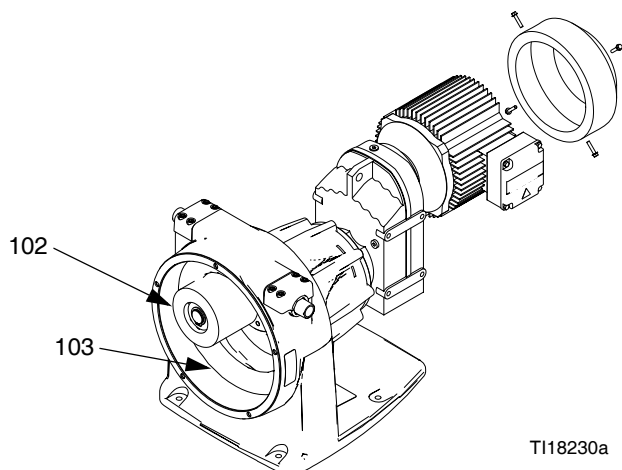
- △ 1 Lubricate with hose lube.
- △ 4 Used on EP3 Pumps only.
- △ 5 Used on EP3 and EP4 Pumps.



NOTE: See your EP3/EP4 Pump Repair Manual for complete hose and clamp installation procedures.

Continued.

5. Turn the motor fan to move the roller (102) to the 12 o'clock position. Push the hose (103) into the housing. Use a rubber mallet if the hose is difficult to seat.



6. Return the roller (102) to the 6 o'clock position, compressing the hose. It is critical that the roller is at the bottom of the pump to ensure the correct capacity of hose lube. Reinstall the motor fan cover.

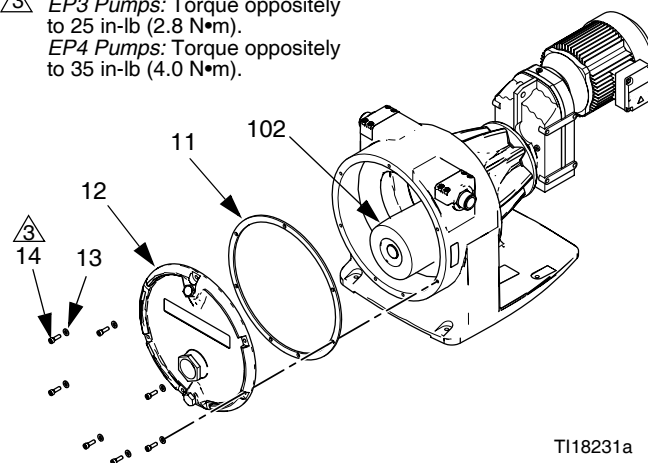
NOTICE

The roller must be returned to the 6 o'clock position before installing the front cover. Failure to do so will result in overfilling the pump with hose lube.

7. Install the gasket (11) and front cover (12). Install the screws (14) and washers (13). Torque as shown.

NOTE: Do not over-tighten the front cover screws. This will cause the gasket to deform and the pump to leak.

△ 3 EP3 Pumps: Torque oppositely to 25 in-lb (2.8 N•m).
EP4 Pumps: Torque oppositely to 35 in-lb (4.0 N•m).



8. Add hose lube as explained in your EP3/EP4 Pump Repair Manual.

All written and visual data contained in this document reflects the latest product information available at the time of publication. Graco reserves the right to make changes at any time without notice.

Original instructions. This manual contains English. MM 406954

Graco Headquarters: Minneapolis
International Offices: Belgium, China, Japan, Korea

GRACO INC. AND SUBSIDIARIES • P.O. BOX 1441 • MINNEAPOLIS, MN 55440-1441 • USA

Copyright 2011, Graco Inc. All Graco manufacturing locations are registered to ISO 9001.

www.graco.com
Revised June 2012