

# MV-5500

# DUST COLLECTOR

Parts/user Manual



**1-800-653-9311**

[www.SmithMfg.com](http://www.SmithMfg.com)

Phone: 954-941-9744 • Fax: 954-545-0348

## INDEX

Page	Contents
2	Index / Introduction
3	Uncrating Equipment / Safety Guidelines
4	Your MV-5500 Dust Collector
5	Machine Start-Up & Shut-Down / Bag Replacement / Ordering
6	Storage / Troubleshooting / Maintenance
7	Main Assembly
8	MV-SB and Accessories
9	Lid & Vacuum Release Assembly
10	Bag Filter Assembly
11	HEPA Filter Assembly
12	Operating Instructions
13-14	Maintenance Log
14-15	Limited Equipment Warranty
16	Warranty Activation

## INTRODUCTION

**Congratulations on purchasing the MV-5500™ Dust Collector from SMITH Mfg. Company.**

The MV-5500 dust collector is a rugged, powerful unit that is sure to meet your expectations for dust control.

See technical data below:

### MV-5500

Power	9700W (13HP)
Air pressure	3800mm Aq
Airflow	550 c.f.m
Hose	2" (50 mm) Dia. & 3" (75 mm) Dia.
Weight	408 lb. (185 kg) (Vacuum) 487 lb. (220 kg) (with Motor)
Dimension (LxWxH)	58 x 32 x 72 in (148 x 82 x 183 cm)
Plastic dust bag	20x32in (500x800mm) (LDPE)
Noise	80db

### MV-SB (Cyclone Separator)

Weight	108 lb. (49 kg)
Dimension (LxWxH)	26 x 24 x 56 in (66 x 61 x 142 cm)



## BEFORE START-UP, READ THIS..

Please read all operating instructions, and be completely familiar with your equipment before operating. When in doubt, please contact SMITH Manufacturing Customer Service for operational details.

## UNCRATING EQUIPMENT

When you uncrate your equipment, make certain that the machine has not been damaged and that all fasteners and guards are properly tightened.

Please check that the following accessories are included:

- Hose (2" x 33') (1)
- Elbow Hand Grip (1)
- Pipe Handle Extenders (2)
- Floor brush (1)
- Floor nozzle (1)
- Small brush (1)
- Dust bag (20" x 32") (20)
- Velcro belt (1)
- Y-adapter (1)
- 2" Hose connector (4)
- 3" Hose inlet coupler (1)

**REMEMBER:** Only authorized, experienced and properly trained personnel should operate this equipment. Operating personnel should practice safety at all times and wear protective gear (gloves, goggles, safety vests, ear plugs, steel-toe shoes, etc.)

## SAFETY GUIDELINES

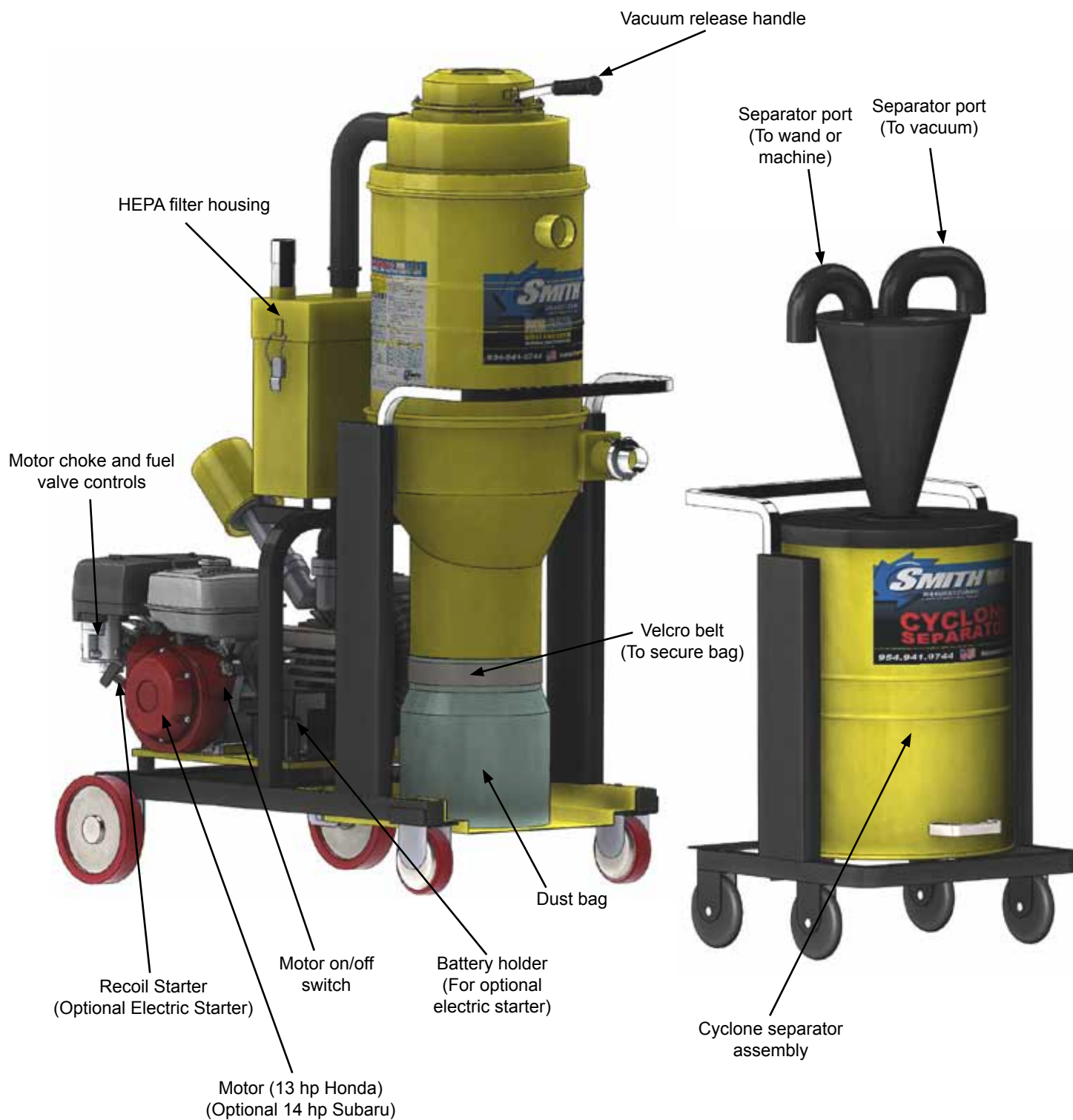


**Incorrect use of the dust collector can result in property damage, personal injury, or death. Be sure to read and follow all directions and precautions as outlined in this manual.**

- Always wear personal safety equipment such as sturdy non-slip boots, ear protection, dust mask and approved eye protection
- Position the vacuum in the working area
- Ensure dust collection bag is tightly fixed to the collection cone by the Velcro belt
- Check that the vacuum hose is fitted securely to inlet
- The machine should not be used in areas where potential for fire or explosions exist
- Do not use the machine in an unventilated enclosed space (indoors), as the gas motor's exhaust contains carbon monoxide
- The machine should not be started without the dust bag attached
- Make sure the hose is not pinched, bent, or damaged
- Check fuel and oil levels before use

## YOUR MV-5500™ DUST COLLECTOR

Please take time to familiarize yourself with the MV-5500™'s controls,  
as well as some of the features of your new machine



## MACHINE START-UP

- Make sure hoses are tightly attached to machine
- Make sure dust bag is secured tightly with Velcro
- Slide the fuel valve lever to “on” (matching the guide label to the left of the valve)
- Slide the choke lever to “closed” (matching the guide label to the left of the valve)
- Move throttle to 1/3 position (1/3 up from minimum)
- Turn engine switch to “on”

### **Recoil Starter:**

- Pull starter handle quickly away from motor, return grip to motor gently to avoid damage

### **Optional Electric Starter:**

- Turn key to “start” position
  - If motor does not start, release key and wait 10 seconds before trying again
- 
- As motor warms up, move choke to “open” position
  - Move throttle up to desired speed

## IF THE ENGINE DOES NOT START

- Check engine for proper gas and oil levels (refer to engine manual)
- Check spark plug. Make sure the socket areas are clean and clear of debris, and that the proper gap is set (replace if needed)
- Make sure the motor’s on/off switch is set to “on”

**\*Engine repair and engine warranty issues are handled directly by your local engine service center.**

## MACHINE SHUT-DOWN

- Move throttle to minimum setting
- Turn the on/off switch to “off”

## DUST BAG REPLACEMENT

Once the dust bag has collected around 44 lb. (20 kg) of material, replace the bag to avoid lifting hazards caused by overfilling

Follow the steps below for replacement:

- Switch the machine ON position (you will notice the air is sucked from the plastic bag)
- Loosen the belt holding the dust bag, remove the dust bag from the body
- Attached a new bag, tighten the belt using Velcro
- It is important to keep vacuum running during the bag changing process. This will keep the flap in the collection cone closed ensuring no dust will drop out from within the collection cone when bag replacement is being performed

## ORDERING

**To ensure product safety and reliability, and to maintain your warranty, always use genuine replacement parts from SMITH when making repairs to equipment.**

When ordering please specify the model and serial number of the machine. In addition, give a part number, description, and quantity as listed on your parts list.

If you have any questions about the operation of your machine or would like to order replacement parts, contact your SMITH Manufacturing representative directly. Contact 1-800-653-9311 (954-941-9744) for information.

Visit our website at  
**[www.smithmfg.com](http://www.smithmfg.com)**

## STORAGE

Shut off fuel valve and remove all fuel, or add fuel stabilizer. Start engine and run until it stalls. Remove spark plug and pour two ounces of motor oil into cylinder and slowly crank the engine by hand to distribute oil to prevent rust during storage. Replace spark plug and store machine upright in a cool, dry, and well ventilated area.

## TROUBLESHOOTING

### PROBLEM

#### Possible Reason(s)/Solution(s)

### MOTOR DOES NO START

- No power, cable or switch defective

### MOTOR RUNS BUT NO SUCTION

- Hose not connected or blocked

### MOTOR RUNS W/ POOR SUCTION

- Hose damaged
- Filter blocked
- Top cover loose

### DUST BLOWS FROM MOTOR

- Filter loose or defective

### ABNORMAL NOISE

- Check motor(s)

### DRIVE BELT WEARING PREMATURELY

- Pulley is misaligned
- Wrong belt

## MAINTENANCE CHECK LIST

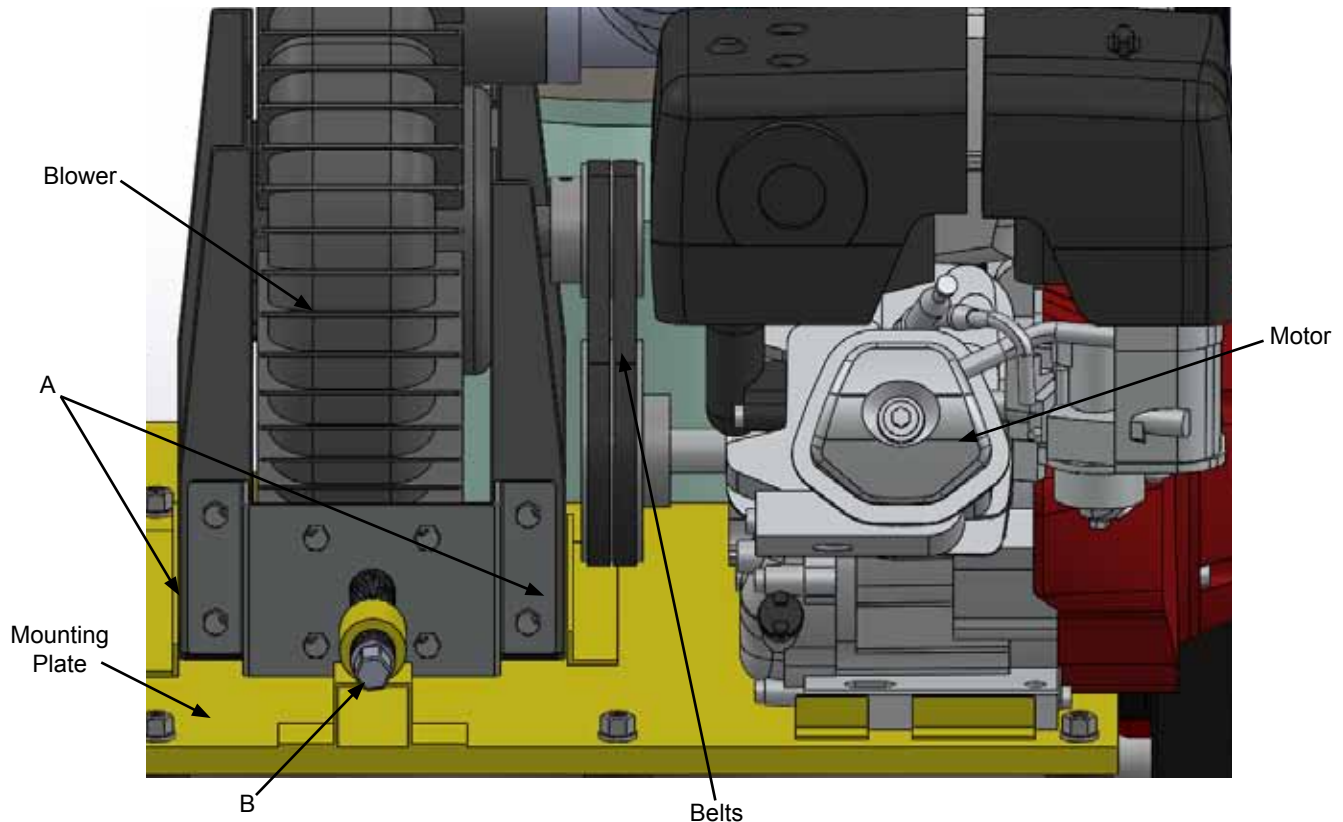


**Note:** Make sure the ignition is in the **OFF** position, and the spark plug is disconnected before servicing.

- Maintain proper engine and crankcase oil levels. Change every 25-50 hours. (See Honda manual)
- Clean spark plugs regularly, and set the proper gap
- Wash the air cleaner element in a non oil-based solvent, then squeeze out residue. Allow filter to dry before reinstalling.
- Check all fasteners and re-tighten, since the machine will vibrate the fasteners loose if they are not secured. Use thread locking fluid.  
This includes the fasteners holding the motor and blower to the base plate.
- Check the drive belts for wear, and adjust (tighten), or replace as required.
- Check that the pulleys are aligned properly to ensure the drive belts are running true.
- Check the wheels for wear and that they are rotating properly, replace if worn. Clean wheels of material buildup.
- Clear dust from bag and HEPA filters using compressed air.
- Check bag filters and HEPA filters for wear, replace if needed.



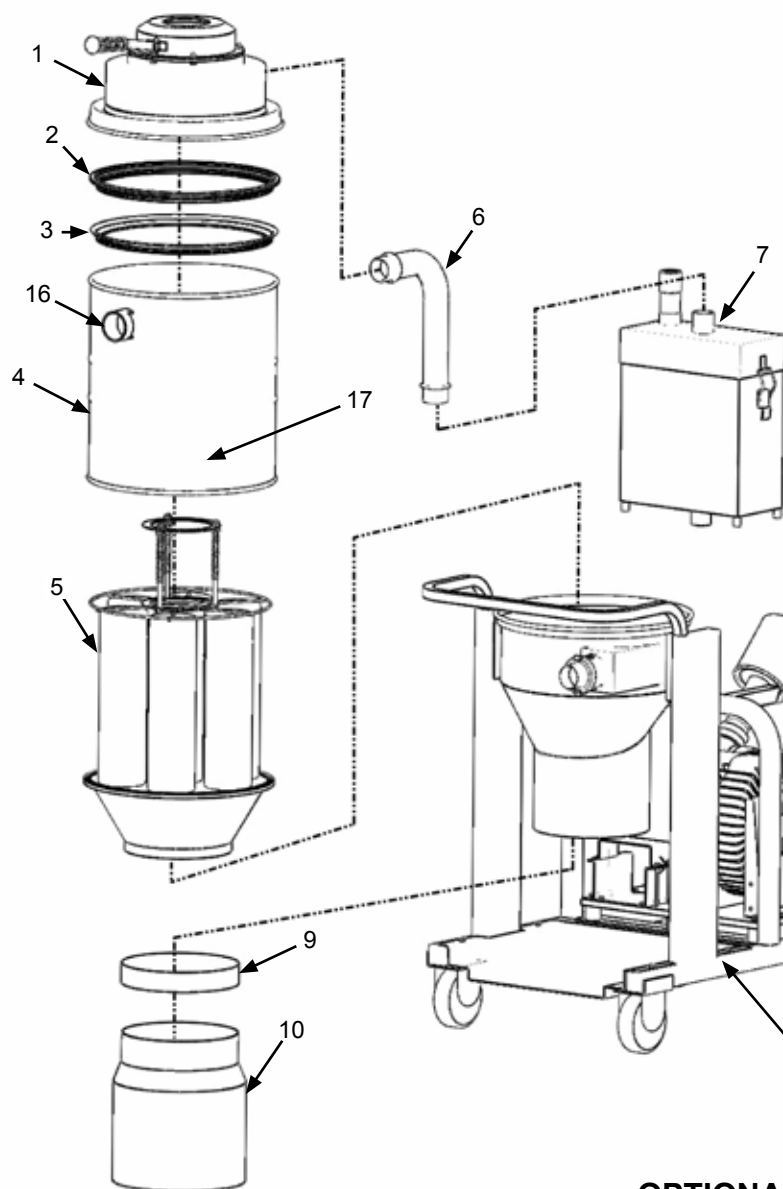
## BELT REPLACEMENT AND TENSIONING



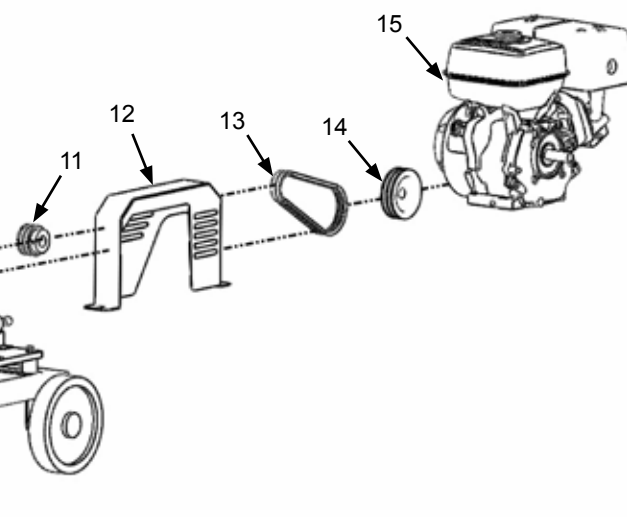
Follow these instructions to install new drive belts, or to re-tension current belts.

- 1 - Loosen the bolts (labeled "A" above) that fix the blower to the mounting plate.
- 2 - To install a set of new belts, use a 3/4" hex wrench on "B" to move the blower so the blower's pulley moves closer to the motor's pulley to give you room to slip the new belts into place.
- 3 - To tension the belts, use a 3/4" hex wrench on "B" to move the blower so the blower's pulley moves away from the motor's pulley. To properly tension the belt, keep tightening the belts until the belts deflect approximately 1/8" under squeezing by hand.
- 4 - Ensure pulleys are aligned after tensioning. If they are not aligned, release the tension, loosen the motor pulley (with the set screws) and readjust. Recheck after re-tensioning the belt.

## MV-5500 MAIN ASSEMBLY



Item	P/N	Qty	Description
1	see page 9	1	Lid & Vac Release Plunger
2	MV.31	1	Main Body Seal
3	MV.30	1	Main Body Seal Ring
4	MV.5.6.1	1	Filter Housing / Main Body
5	see page 10	1	Bag Filter Assembly
6	MV.5.6.2	1	Coupler Hose
7	see page 11	1	HEPA Filter Housing Assembly
8	MV.5.6.3	1	Main frame
9	MV.2.25	1	Velcro belt
10	MV.1.20	1	Dust bag
11	MV-5500.BP	1	Blower-Side Pulley
12	MV5500	1	Belt Guard
13	MV.5.VB	2	V-Belt
14	MV-5500.MP	1	Motor-Side Pulley
15	RS-E-15029	1	13 hp Honda Gas Motor
16	MV.5.8	1	Vacuum Gauge
17	MV.1.33	7	Drum Latch (not shown)

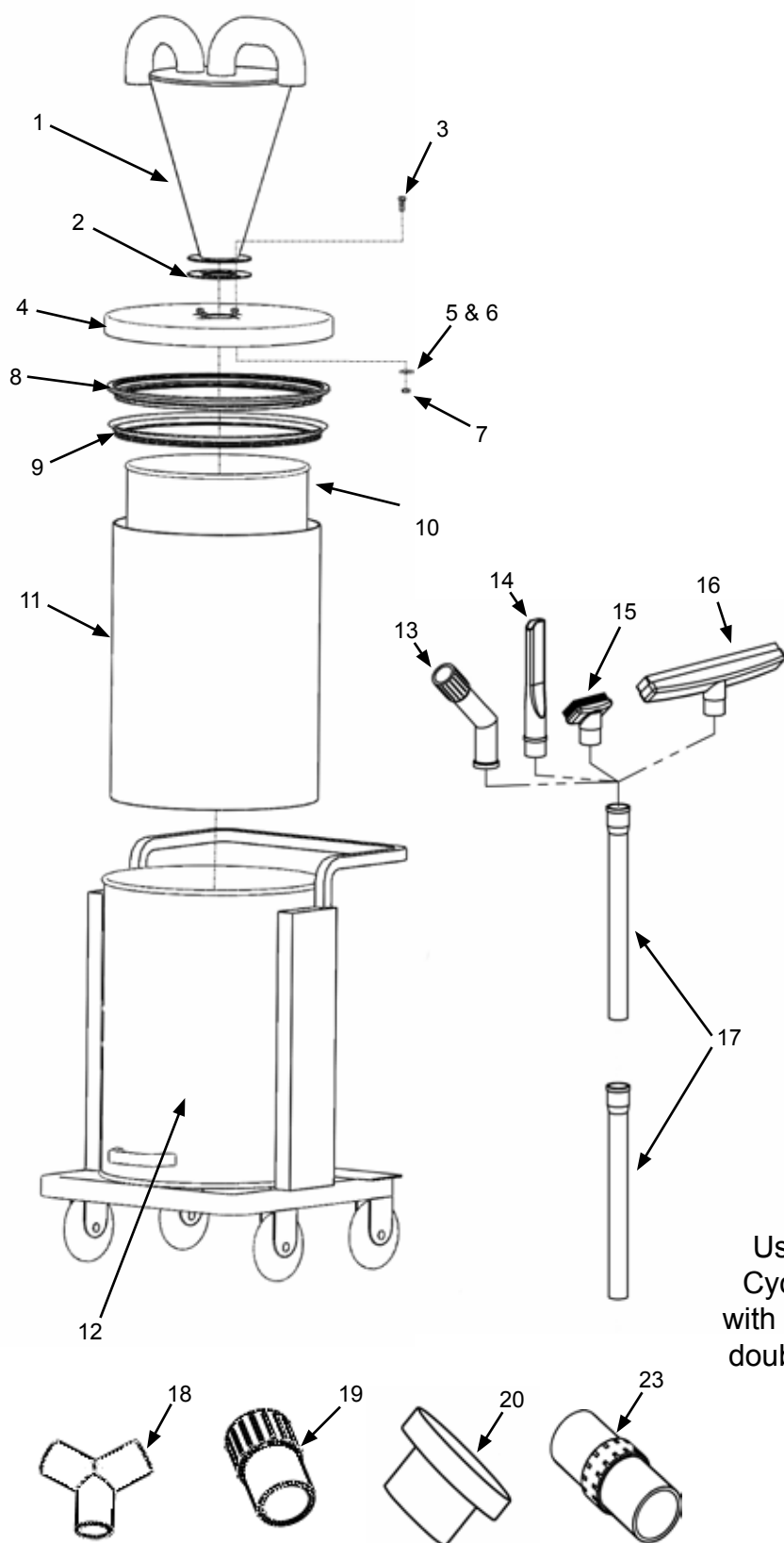


### OPTIONAL SYSTEM UPGRADES:

- 14 hp Subaru Gas Motor
- 10 hp Electric Motor
- Electric Starter (Battery is customer supplied)



## MV-SB SEPARATOR MAIN ASSEMBLY & ACCESSORIES



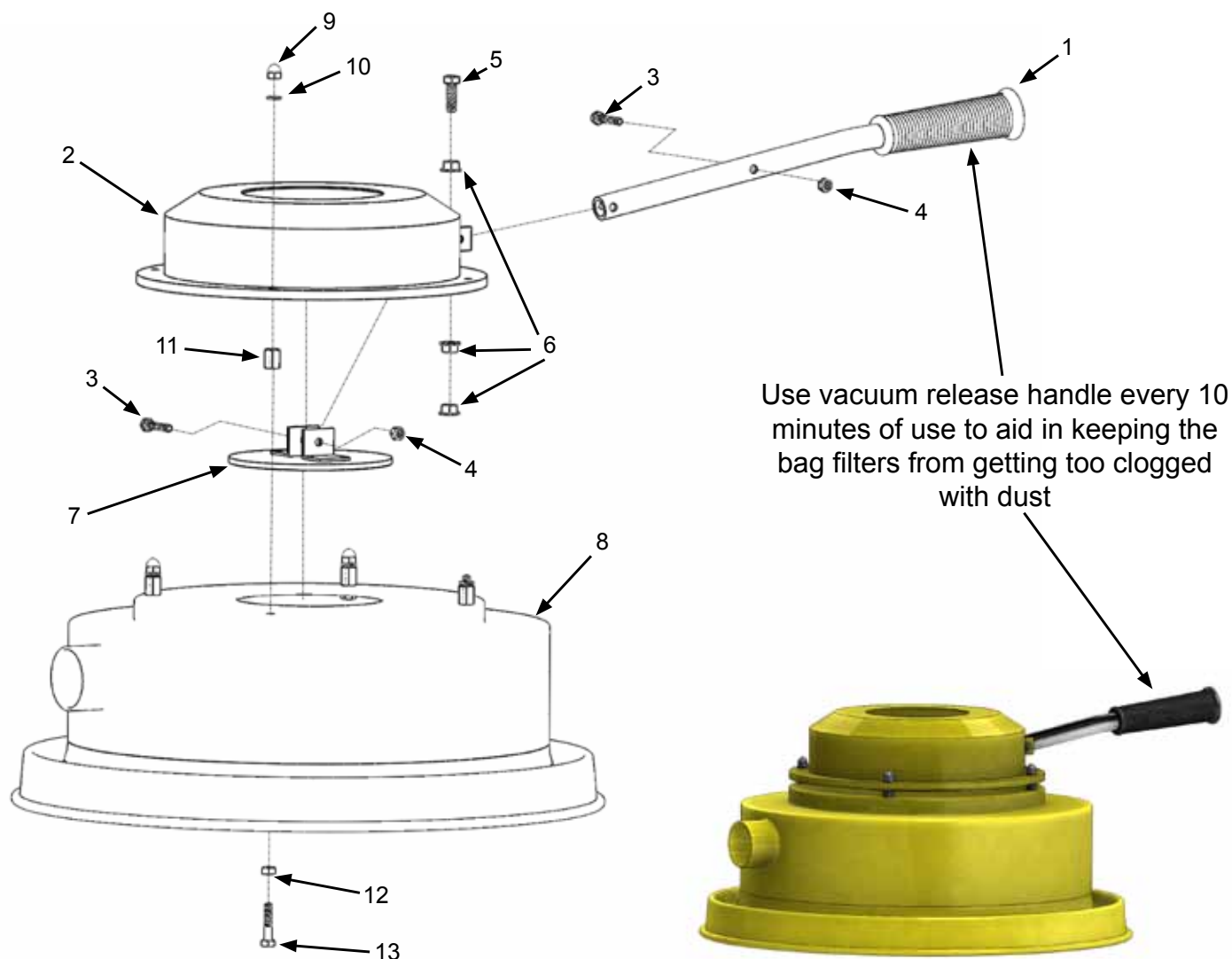
Item	P/N	Qty	Description
1	MV.SB.1	1	Lid Funnel
2	MV.SB.2	1	Lid Rubber Gasket
3	MV.SB.3	4	M8-1.25x25 mm Hex Head Bolt
4	MV.SB.4	1	Lid Base
5	MV.SB.5	4	M8 Fender Washer
6	MV.SB.6	4	M8 Lock Washer
7	MV.SB.7	4	M8-1.25 Hex Nut
8	MV.SB.8	1	Separator Main Body Seal
9	MV.SB.9	1	Separator Main Body Seal Ring
10	MV.SB.H	1	Dust Bag Holder
11	MV.SB.DB-20	1	Dust Bag (35" x 47")
12	MV.SB.10	1	Separator Main Frame
13	MV.26	1	Vac Elbow
14	MV.25	1	Vac Floor Nozzle
15	MV.22	1	Vac Small Brush
16	MV.24	1	Vac Large Brush **
16*	MV.28	*	** Vac Large Brush (Stainless)
17	MV.27	2	Vac Extension Wand **
17*	MV.29	*	** Vac Extension Wand (Stainless)
18	MV-Y	1	Y-Connector
19	MV.23	4	2" Connector
20	MV.1.32	1	3" Coupler (Stainless)
21	MV.1.17	1	Equipment Storage Bin (not shown)
22	MV.HS	1	2" x 33' Hose (not shown)
23	VM24	1	2" (50 mm) Hose Coupler *

\* Optional Equipment

Using the MV-SB Cyclone Separator with the MV-5500 can double the lifetime of the filters.

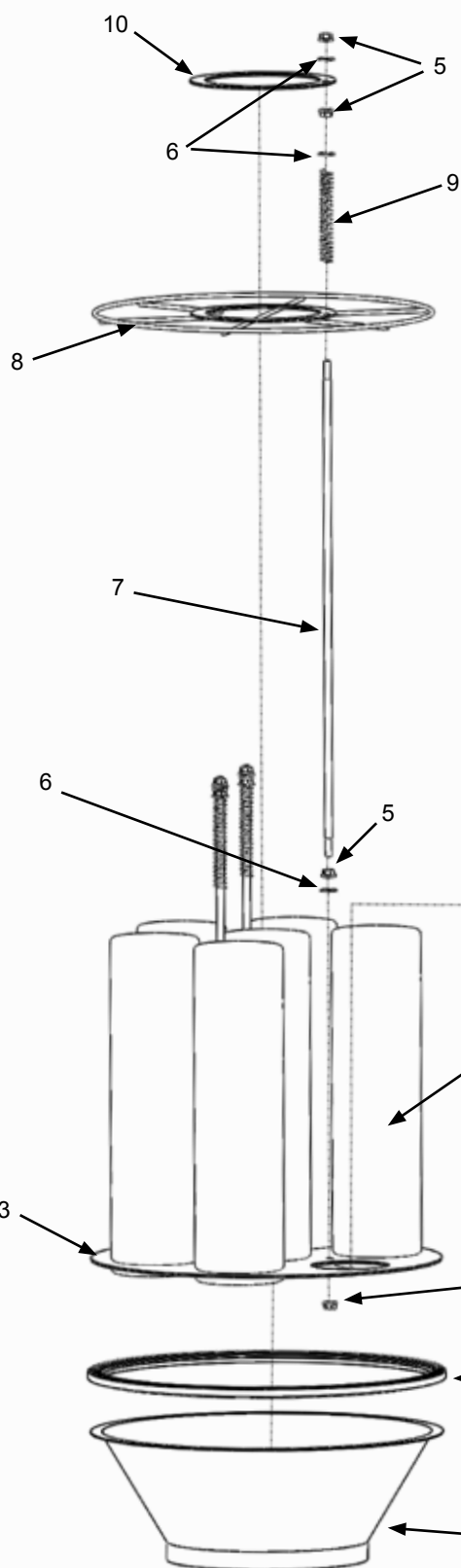


## LID & VACUUM RELEASE ASSEMBLY



Item	P/N	Qty	Description
1	MV.5.4.1	1	Vacuum Release Handle
2	MV.5.4.2	1	Upper Lid
3	MV.5.4.3	2	M6-1.0x35 mm Hex Head Bolt
4	MV.5.4.4	2	M6-1.0 Nylock Nut
5	MV.5.4.5	1	M8-1.25x25 mm Hex Head Bolt
6	MV.5.4.6	3	M8-1.25 Flanged Hex Nut
7	MV.5.4.7	1	Vac Release Plunger
8	MV.5.5.0	1	Lower Lid
9	MV.5.5.1	4	1/4-20 Acorn Nut
10	MV.5.5.2	4	1/4" Lock Washer
11	MV.5.5.3	4	1/4-20 Coupling Nut
12	MV.5.5.4	4	1/4-20 Hex Nut
13	MV.5.5.5	4	1/4-20x1 1/4 Hex Head Bolt

## BAG FILTER ASSEMBLY

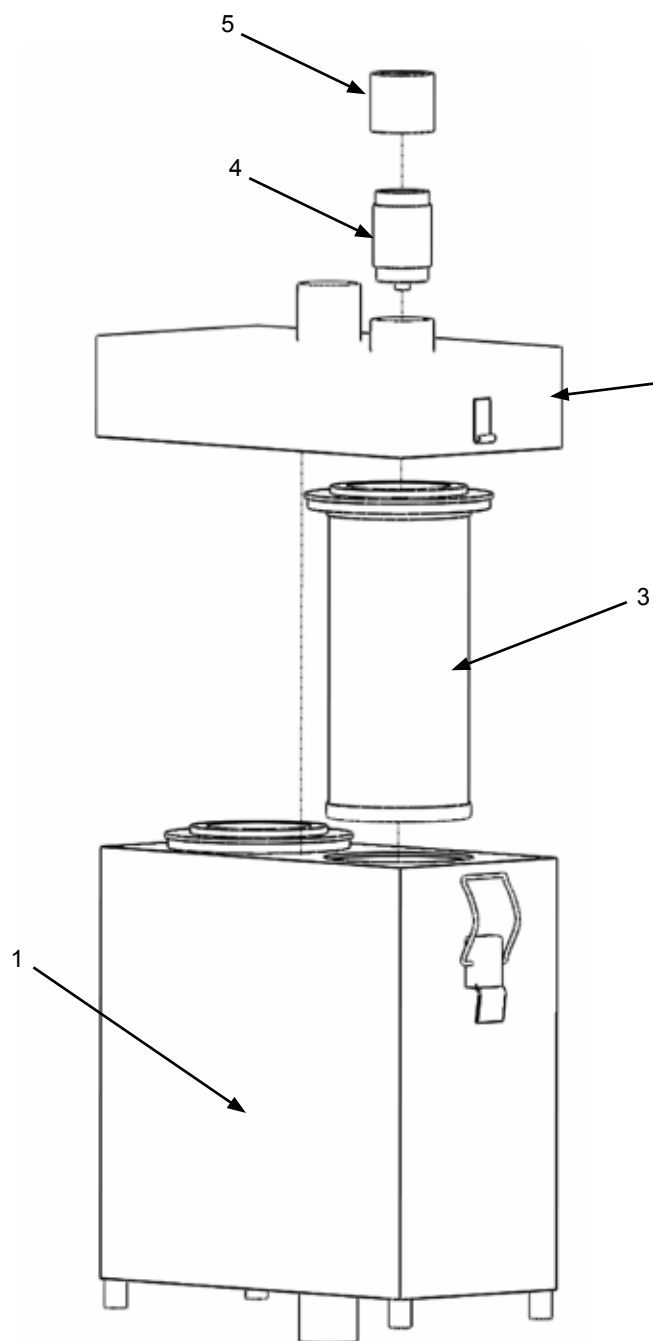


Item	P/N	Qty	Description
1	MV.5.1.1	1	Filter Funnel Base
2	MV.5.1.2	1	Filter Seal
3	MV.5.1.3	1	Filter Base Plate
4	MV.5.2	7	Filter Bag
5	MV.5.1.4	12	5/16-18 Flanged Hex Nut
6	MV.5.1.5	9	5/16" Flat Washer
7	MV.5.1.6	3	5/16-18 Threaded Rod
8	MV.5.1.7	1	Filter Tie-Down Ring
9	MV.5.1.8	3	Filter Support Spring
10	MV.5.1.9	1	Upper Filter Support Ring



## HEPA FILTER ASSEMBLY

Item	P/N	Qty	Description
1	MV.5.6.4	1	HEPA Filter Main Casing
2	MV.5.6.5	1	HEPA Filter Casing Lid
3	MV.5.3	2	HEPA Filter
4	MV.5.7.1	1	Emergency Vac Release Valve
5	MV.5.7.2	1	Emergency Vac Release Cap



# BEFORE OPERATING: MV5500

## READ MANUAL AND PRACTICE SAFETY FIRST

### »HAZARDOUS DUST WARNING«

Dust resulting from use of this machine and cutter tools may include chemicals proven to cause cancer, birth defects and reproductive health issues, including lead from some paints and silica from concrete and masonry. Always operate this machine in a well-ventilated area with a HEPA-filter dust containment vacuum system. Operators should always wear proper safety equipment, including an approved respirator to filter out fine dust particles. All EPA and OSHA guidelines regarding airborne dust should be followed when operating this machine. Failure to follow these safety protocols may result in serious injury, illness or death.



### 10 DAILY INSPECTION POINTS PRIOR TO START-UP:

1. Only authorized, experienced and properly trained personnel should operate this equipment
2. Always wear personal safety equipment such as sturdy non-slip boots, ear protection, dust mask and approved eye protection
3. Do not operate this equipment in an environment where any explosive gases may be present, or where the risk of fire or explosion may exist
4. Incorrect use of the dust collector or breathing dust can result in property damage, personal injury, or death
5. To prevent dust dispersion, replace worn or damaged HEPA filter, properly fasten and fit vacuum hose to inlet port and secure dust collection bag with velcro belt before start-up
6. Disconnect from power supply prior to servicing this equipment
7. Replace any part, cord or component that may be worn or damaged prior to use
8. Check fuel and oil levels prior to starting engine
9. Always consult with a licensed technician prior to operation or maintenance
10. When in doubt, contact SMITH technical service at 954-941-9744

### MV5500 SPECIFICATIONS

POWER	OHV gas engine (13HP Honda, 14HP Subaru) with electric start (battery not supplied)		
FUEL	High-octane unleaded gasoline		
FILTERS	7 - Non-woven fabric: 4.5"OD, X 21.5"L 2 - HEPA PTFE filter: 5"ODx 2.6"ID x 11.25"L		
FILTER LIFE	~1500 hours with a separator (700 hours without)		
AIR FLOW	550CFM	RPM	1200-1800
WATER LIFT	149"	VACUUM WEIGHT	264lbs/120kg
AIR PRESSURE	3800mmAq	VACUUM DIMENSIONS	45"x26.4"x59" (114x67x150cm)
		HOSE INLET	2"(50cm)OD + 3" (75cm)OD

### INCLUDED ACCESSORIES:

**PVC-Handled Storage Box**  
23.5"x16"x18.5" (60x40x47cm) with:

- (1) 3" x 33" (75mm x 10m) Collection hose
- (1) Y-adaptor hose connection
- (4) 2" (50mm) connectors
- (1) Vacuum wand
- (1) Floor nozzle

- (1) Elbow pipe connector
- (1) 3" (75mm) stainless coupler
- (1) Round brush
- (1) Floor brush
- (20) Vacuum collection bags (LDPE 20"x32")
- (1) Velcro bag strap

### START-UP:

1. Attach vacuum hose to pre-separator and separator-hose to equipment and/or wand
2. Fasten vacuum collection bag securely with velcro strap
3. Check engine oil level and add fresh high-octane gasoline
4. Wear personal protection safety equipment
5. Start engine (consult with engine manual)
6. Adjust throttle to achieve proper RPM for suction required for operation
7. Begin removal operation and monitor hoses, separator, and vacuum
8. While vacuum is under power, pull down the vacuum plunger arm to clean the filter bags from accumulated dust and debris into collection bag. Hopper will close when plunger is released
9. Do not overfill pre-separator and vacuum collection tanks with dust and debris

### SHUT-DOWN:

1. Prior to stopping engine, press plunger down to purge dust from vacuum filters.
2. Turn OFF engine.
3. Replace filled vacuum and separator collection bags with empty bags.
4. Inspect vacuum condition and replace any worn or damaged parts; filter, hose, etc.
5. Inspect engine by cleaning or replacing air filter and changing oil and gas as required
6. Thoroughly clean all tools and accessories after job is complete and prior to storage

### COLLECTION BAG REPLACEMENT:

Once the dust bag has collected approx. 45 lbs (20kg) of dust, replace collection bag as follows:

1. Replace LDPE 20"x32" dust bag by loosening strap, closing and sealing the filled bag, then securing a new bag with velcro strap. An optional longopac or pall can also be adapted
2. Do not overfill collection bags. Turn engine off for operator safety

### FILTER MAINTENANCE:

Pre-separator Use: The use of a pre-separator will allow the vacuum to be more efficient, offer longer filter life and not require filter cleaning and replacement of filled bags on vacuum as often.

#### Stage 1 - Fabric Bags:

1. Free dust accumulation by pushing plunger down by hand approximately every 10 minutes
2. Replace worn or damaged bags as required and clean with compressed air

#### Stage 2 - HEPA filter:

1. Remove HEPA from canister and clean with compressed air daily or as required
2. Replace worn or damaged filter as required

### TROUBLESHOOTING

PROBLEM	CAUSE	SOLUTION
Engine does not start*	Battery discharge	Replace
	Engine oil or fuel	Add or replace
	Air filter damaged	Replace
Poor suction	Filter damage or wear	Replace filter
	Belt loose or worn	Tension or replace
Dust blowback	Filter loose or defective	Reposition or replace
Abnormal sound	Engine	Check or service engine
	Ring-blower	Check or replace ring-blower
Filter damaged	Sharp or abrasive objects	Separator increases filter life

### Recommended Stock Options:

- (1) Cyclone Separator MV-SA or MV-SB
- (2) Woven filter bags, set of 7 (PN: MV5500.10)
- (3) HEPA PTFE filter (PN: MV5500.11)



\* Engine warranty and maintenance directly through authorized engine manufacturer. All specifications are subject to change without notice. A 12-month calendar material and manufacturing defect warranty from in-service date is included with purchase. Warranty does not cover any defect resulting from normal wear and tear, negligence, improper use, incorrect voltage connection; unauthorized repair, wet or other non-approved material collection, etc. Refer to SMITH terms and conditions for details at [www.smithmfg.com](http://www.smithmfg.com)

SMITH Manufacturing • 1610 S. Dixie Hwy, Pompano Beach, FL 33060 USA • 954-941-9744 • [www.smithmfg.com](http://www.smithmfg.com)

## Operating Instruction Decal: LB-50017



## MAINTENANCE LOG

[illegible]



## MAINTENANCE LOG

[illegible]

## MAINTENANCE LOG

This image shows a full page of white paper with horizontal blue or grey ruling lines. The lines are evenly spaced and run across the width of the page. There is no handwriting or other markings on the paper.

## WARRANTY CLAIMS

The manufacturer reserves the right to change or improve the machine design without assuming any obligation to update any products previously manufactured before this manual. It is the customer's responsibility to complete the warranty card and mail it to the seller within 10 days from the date of purchase. If a failure occurs during the warranty period, the customer must contact the seller to determine the appropriate action. Any and all transportation charges are to be borne by the purchaser.

## Limited Equipment Warranty

All statements, technical information and recommendations contained in SMITH's literature are based on tests believed to be reliable, but the accuracy or completeness thereof is not guaranteed and the following is made in lieu of all warranties, expressed or implied. SMITH warrants all equipment or part referenced in this document which is manufactured by SMITH and bearing its name to be free from defects in material and workmanship on the date of sale to the original purchaser under normal use and maintenance as herein provided. This warranty does not apply to components manufactured by others such as, but not limited to, bearings and engines; such components that may or may not have their own warranties.

With the exception of any special, extended, or limited warranty published by SMITH, SMITH will, for a period of three months (90 days) from the date of sale or up to five hundred (500) hours of use by buyer, whichever shall occur first; repair or replace any part of the equipment determined by SMITH to be defective. This warranty applies only when the equipment or part is installed, operated and maintained in accordance with SMITH's written recommendations.

SMITH's sole obligation for any breach of warranty or breach of contract for defects, deliberate or accidental omissions, shall be limited to repairing, replacing or allowing credit for, at SMITH's option, any part which, under normal and proper use and maintenance, proves defective in material or workmanship within warranty period, provided, however, that notice of any such defect or omission and satisfactory proof thereof is promptly given by buyer to SMITH, and thereafter, such defective part is returned to SMITH with transportation charges prepaid, and SMITH's examination proves such part to have been defective. This warranty does not obligate SMITH to bear any transportation charges or personnel time in connection with the replacement or repair of defective parts. This warranty does not obligate SMITH to bear any expense for travel time or of personnel in connection with any service calls. SMITH will not, in any event, be liable to the user for any consequential damages arising out of this sale for the loss of use, lost profits or revenue, interest, lost goodwill or work stoppage. SMITH shall not be liable for any injury, loss or damage, direct or consequential, arising out of the use or the inability to use the product or for environmental claims. It being understood that SMITH has no means of controlling the products final use; therefore, it shall be buyer's responsibility to determine suitability of product for intended use and buyer assumes all risks and liabilities whatsoever, in connection therewith. In no event shall SMITH be liable for consequential or special damages. Used products are sold on an "as is" basis, and there is no implied warranty of merchantability or of fitness for a particular purpose, unless made in writing by an officer at SMITH's office.

This warranty does not cover, and SMITH shall not be liable for general wear and tear, or any malfunction, damage or wear caused by faulty installation, misapplication, abrasion, corrosion, inadequate or improper maintenance, negligence, accident, tampering, or substitution of non-SMITH component parts. Nor shall SMITH be liable for malfunction, damage or wear caused by the incompatibility of SMITH equipment with structures, accessories, equipment or materials not supplied by SMITH, or the improper design, manufacture, installation, operation or maintenance of structures, accessories, equipment or materials not supplied by SMITH. This warranty does not apply in respect to damages to any product or accessory or attachment thereof caused by overloading or other misuse, neglect or accident, nor does this warranty apply to any product or accessory or attachment thereof, which has been repaired or altered in any way which, in the sole judgment of SMITH, affects the performance, stability or general purpose for which it was manufactured. In the manufacture of buyer's equipment, parts may be omitted or equivalent functioning equipment and components may be substituted for the original specified equipment upon the sole judgment and discretion of SMITH.

This warranty is conditioned upon the prepaid return of the equipment claimed to be defective to an authorized SMITH Reseller for verification of the claimed defect. If the claimed defect is verified, SMITH will repair or replace free of charge any defective parts and return of merchandise back to the customer freight collect. If inspection of the equipment does not disclose any defect in material or workmanship, repairs will be made at a reasonable charge, which charges may include the costs of parts, labor and transportation.

THIS WARRANTY IS EXCLUSIVE AND IS IN LIEU OF ANY OTHER WARRANTIES, EXPRESS OR IMPLIED, INCLUDING BUT NOT LIMITED TO WARRANTY OF MERCHANTABILITY OR WARRANTY OF FITNESS FOR A PARTICULAR PURPOSE.

SMITH's sole obligation and buyer's sole remedy for any breach of warranty shall be as set forth above. The buyer agrees that no other remedy (including, but not limited to, incidental or consequential damages for lost profits, lost sales, injury to person or property, or any other incidental or consequential loss) shall be available. Any action for breach of warranty must be brought within two (2) years of the date of sale.

SMITH MAKES NO WARRANTY, AND DISCLAIMS ALL IMPLIED WARRANTIES OF MERCHANTABILITY AND FITNESS FOR A PARTICULAR PURPOSE, IN CONNECTION WITH ACCESSORIES, EQUIPMENT, MATERIALS OR COMPONENTS SOLD BUT NOT MANUFACTURED BY SMITH.

These items sold, but not manufactured by SMITH (such as electric motors, switches, hose, etc.), are subject to the warranty, if any, of their manufacturer. SMITH will provide purchaser with reasonable assistance in making any claim for breach of these warranties. In no event will SMITH be liable for indirect, incidental, special or consequential damages resulting from SMITH supplying equipment hereunder, or the furnishing, performance, or use of any products or other goods sold hereto, whether due to a breach of contract, breach of warranty, the negligence of SMITH, or otherwise.

ADDITIONAL WARRANTY COVERAGE - SMITH does provide extended warranty and wear warranty for products.

Corrections - typographical or clerical errors contained herein are subject to correction by SMITH.

Assignment - buyer shall not assign or transfer this warranty without SMITH's written consent.

Entire agreement and applicable law - the rights and obligations of SMITH and buyer shall be governed by the laws of the state of Florida, U.S.A. In force on date hereof. The provisions hereof are intended by buyer and SMITH as a final expression of their agreement, and are intended also, as a complete and exclusive statement of all terms apply cable to buyer's order. No waiver, modification, or addition to any of the terms hereof shall be binding on SMITH, unless made in writing by an officer at SMITH's office as stated herein. In the event of conflict between buyer's purchase order and the terms hereof, the latter shall control. If any provisions herein are to any extent invalid or unenforceable, the remainder of the warranty shall not be effected thereby and shall be valid and enforceable to the fullest extent permitted by law.

Legal action - buyer shall be responsible for all costs of collection of outstanding indebtedness, including but not limited to attorney's fees and court costs to seller. Buyer shall reimburse seller for any and all litigation expenses seller incurs as a result of an unsuccessful buyer claim. The jurisdiction and venue of the court for any litigation, state or federal, brought by the buyer and/or seller shall be located in venue determined by seller.

Fair labor standards - seller's products are produced in the United States and in conformity with all applicable provisions of the fair labor standards act of 1938 as amended and any regulations and orders of the United States Department of Labor issued thereunder.

All written and visual data contained in this document reflects the most current product information available at the time of this publication. SMITH reserves the right to make changes at any time without notice.

TO ORDER, contact your SMITH distributor or call 1-800-653-9311 to identify the nearest distributor.

**SMITH Manufacturing Co., Inc.**  
1610 South Dixie Highway  
Pompano Beach, FL 33060  
www.smithmfg.com





**PRE-OPERATION INSPECTION - WARRANTY ACTIVATION  
PRODUCT REGISTRATION**

1610 South Dixie Highway - Pompano Beach, FL 33060 • Ph: 954-941-9744 • Fax: 954-545-0348 • Email: info@smithmfg.com • www.SMITHMFG.com

Thank you for purchasing a SMITH. Please complete this form upon receipt of your equipment and prior to use on the job. A pre-operation inspection is required to activate your warranty. *All sections must be completed.* Should you have any questions, please add them to the comments section below. Fax the completed form to (954) 545-0348.

Organization \_\_\_\_\_  
Name \_\_\_\_\_ JobTitle \_\_\_\_\_  
Phone \_\_\_\_\_ Email \_\_\_\_\_  
Address \_\_\_\_\_  
City \_\_\_\_\_  
State \_\_\_\_\_ Zip \_\_\_\_\_  
SMITH Product \_\_\_\_\_  
Machine Serial # \_\_\_\_\_  
Date of Purchase (MM / DD / YYYY) \_\_\_\_\_  
Purchased from \_\_\_\_\_

**PRE-OPERATION INSPECTION (PLEASE CHECK ALL)**

1. No parts or components on the machine appear damaged or lost in shipment. ☐ Yes ☐ No
2. All bolts and fasteners are in place and tightly secured. ☐ Yes ☐ No
3. Grease points have been identified for future maintenance requirements and appear lubricated. ☐ Yes ☐ No
4. Wheels are operational. ☐ Yes ☐ No
5. Motor has been started and in good working condition. ☐ Yes ☐ No
6. All Decals appear in place and securely attached. ☐ Yes ☐ No
7. Equipment runs and tested to assure all components are operating correctly. ☐ Yes ☐ No
8. Do you have a Wear Parts Kit with an Extra Cutter set in stock? ☐ Yes ☐ No
9. Did you join Remove Faster News for tech updates, experience sharing and special offers? ☐ Yes ☐ No

Comments (add any additional or from above answers below)

**NOTE:** All power equipment is warranted directly from the motor/engine manufacturers direct and not from SMITH Manufacturing. Prior to starting your equipment, please find the name of your engine/motor repair center for warranty and service:

- Honda: <http://engines.honda.com/dealer-locator/>
- Subaru: <http://robinamerica.com/dealerusacan.aspx>
- Leeson: <http://www.leeson.com/leeson/servicecenter.do?invoke=viewServiceCenterLocator>
- US Motors: <http://www.usmotors.com/Contact-Information.aspx>
- Kohler: <http://www.kohlerengines.com/contact/contact.htm>

**IMPORTANT:** Gas Engine owners: Never tip engine forward which will lock the recoil pull cord until the fuel and oil returns back into their respective fuel chambers and the carburetor is free before it can be started.

Electric motor owners: To avoid problems, power cord must be connected to the correct current and amperage power rating for the motor.





## **SMITH Manufacturing**

1610 South Dixie Highway  
Pompano Beach, FL 33060

Toll Free: 800.653.9311

Phone: 954.941.9744

Fax: 954.545.0348

Email: [info@SmithMfg.com](mailto:info@SmithMfg.com)

**[www.SmithMfg.com](http://www.SmithMfg.com)**