

PROGRESSIVE CAVITY (PC) PUMP

Single Component Metering and Dispensing System



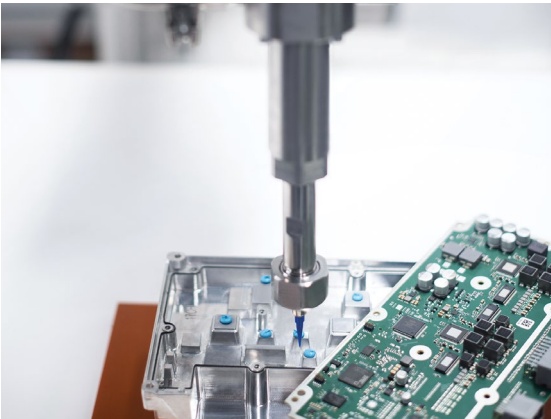
M O V I N G M A T E R I A L S T H A T M A T T E R [™]



MAXIMUM SERVICE LIFE WITH MINIMUM MAINTENANCE

Designed for maximum service life with minimum maintenance, Graco's Progressive Cavity Pump efficiently handles single component middle to high viscosity materials, as well as highly abrasive thermal interface material (TIM).

- **Progressive cavity pump technology:** Continuous feed and progressive cavity metering ensure repeatability of (±) 1%, which saves filling time and improves dispensing efficiency.
- **Adjustable flow range:** Flexible adjustment of dispensing flow enables higher productivity.
- **High wear-resistant fluid path for TIM dispensing:** The fluid path is specially designed to minimize downtime and reduce total cost of ownership.



UNIVERSAL JOINT

The elite construction enhances the abrasion resistance, resulting in longer service life.

QUICK-CHANGE CLAMPS

The pump body can be easily disassembled from the flange for cleaning and maintenance.

ROTOR CONNECTION

The bolted connection of the rotor and universal joint enables quick disassembly and flexible maintenance.

IMPROVED ROTOR

The rotor is made with the elite construction that maximizes the service life and makes it ideal for handling abrasive materials.

Available in Viton® to work with a variety of materials.

APPLICATIONS



ENCAPSULATION



SEALING



BONDING



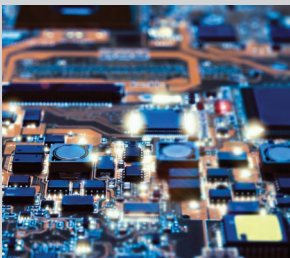
THERMAL
MANAGEMENT



POTTING

MATERIALS • Thermal interface material (TIM) • Epoxy • Silicone • Polyurethane (PU)

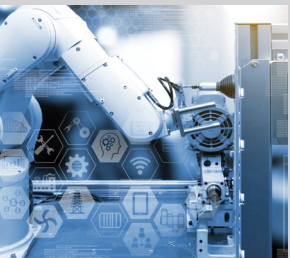
INDUSTRIES



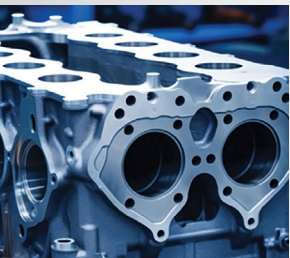
ELECTRONICS



TELECOM



GENERAL INDUSTRY



AUTO TIERS

SPECIFICATIONS

	0.30 cc	1.00 cc	1.45 cc
Maximum RPM		300	
Maximum Flow Rate	45 cc/min	150 cc/min	217 cc/min
Minimum Shot Size	0.03 cc	0.08 cc	0.12 cc
Maximum Operating Pressure	290 psi (2 MPa, 20 bar)		
Maximum Operating Temperature	75 °C (167 °F)		
Material Viscosity	5,000 - 1,000,000 cps (depending on size)		
Wetted Parts	SST, FKM, UHMW, alloy, acetal, chrome		
Inlet Thread	#6 JIC		
Outlet Thread	5/16-28 (f)		
Weight (Motor and gear box not included)	2.60 kg (5.73 lb)	2.62 kg (5.78 lb)	2.90 kg (6.39 lb)



PCB CONTROLLER

- Designed for the electronics industry
- Communication: I/O
- Dimensions: 334 x 268 x 201 mm
- Motor: 240 VAC
- CE, ETL, ROHS certifications

ORDERING INFORMATION

PC PUMP SYSTEMS

	PART #
System, PC Pump, 0.3 CC, PCB, I/O	2010630
System, PC Pump, 1.0 CC, PCB, I/O	2010629
System, PC Pump, 1.45 CC, PCB, I/O	2010628

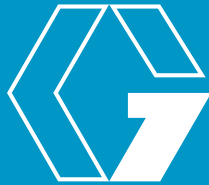
ACCESSORIES

	PART #
Kit, Modbus-Ethernet, IP, PCP, PCB	2011014
Kit, Modbus-Profinet, PCP, PCB	2011015
Pressure Regulator, ORFS, P60-VP, DN7	2008938





MOVING MATERIALS THAT MATTER™



For more information, visit graco.com.

©2025 Graco Inc. 350444 Rev. D 5/25 All written and visual data contained in this document are based on the latest product information available at the time of publication. Graco reserves the right to make changes at any time without notice. Trademarks are referenced herein for identification purposes only. All trademarks are the property of their respective owners. Product covered by issued and pending patents, see graco.com/patents.