

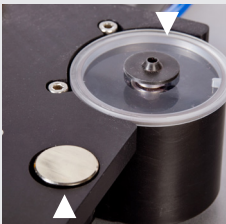
# AUTOMATED JETTING DISPENSING SYSTEMS



## UNIXACT SERIES B AUTOMATION WITH ADVANJET JET VALVE



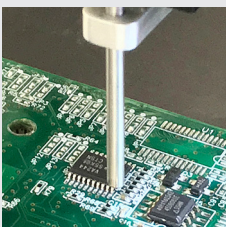
PRIME/PURGE STATION



TACTILE SENSOR



HIGH-PRECISION CAMERA



HEIGHT DETECTION

### Features

- High performance Advanjet® HV-2100 or HM-2600 Diaphragm Jet Valve
- High-precision camera
- Tip and part detection
- Integrated prime/purge station
- Easy-to-use DispensePro™ software
- Smart controller with electronic fluid pressure regulator
- Optional laser height detection

### Benefits

- High quality precision dispense
- Improved uph
- Low operating costs
- Simple setup and quick programming
- Optimized high production jetting

### Materials

- Adhesives
- Silicones
- Anaerobics
- Epoxies
- Silver Epoxies
- UV Cure Adhesives
- Oils/greases
- Fluxes
- Hot Melt / PUR

### Applications

- General Assembly
- Solar Cell Assembly
- Mobile Device Assembly
- Surface Mount Adhesive
- Electronic Components
- Underfill

# SPECIFICATIONS

<b>Valve</b>	<b>Advanjet® HV-2100</b>	<b>Advanjet® HM-2600</b>
Dimensions (X x Y x Z) without mounting bracket	25.4 x 90.3 x 82.0 mm (1.00 x 3.56 x 3.23 in)	62.5 x 187.7 x 113.4 mm (1.00 x 3.56 x 3.23 in)
Weight	0.35 kgs (0.77 lbs)	1.06 kgs (2.33 lbs)
Viscosity range	1–400K mPa•s (cps)	Up to 7,000 mPa•s (cps) at 110° C
Jet frequency	Up to 300 drops/sec	Up to 250 drops/sec
Fluid syringes	5, 10, 30, and 55 cc, or 6 oz.	30 cc
Nozzle options	Tungsten Carbide and long-life ceramic Sizes from 50 µm to 600 µm Extended tips available from 3–9 mm	Tungsten Carbide and long-life ceramic Sizes from 50 µm to 600 µm Extended tips available from 3–9 mm
Nozzle heater	Heating up to 70°C Max	Heating up to 150°C Max
Fluid heater	–	Heating up to 150°C Max
Operating temperature	10°C to 50°C	10°C to 50°C
<b>Controller</b>	<b>Advanjet® HV-2100C</b>	<b>Advanjet® HM-2600C</b>
Dimensions (X x Y x Z)	254.0 x 146.0 x 309.0 mm (10.0 x 5.8 x 12.2")	254.0 x 146.0 x 309.0 mm (10.0 x 5.8 x 12.2")
Weight	3.2 kgs (7.05 lbs)	4.1 kgs (9.0 lbs)
Interface	Touch screen LCD Display	Touch screen LCD Display
<b>Automation Platform</b>	<b>UniXact® Series-B (B300)</b>	
Dimensions (W x H x D)	558 x 647 x 630 mm (22 x 25 x 25 in)	
Maximum working area (X / Y / Z)	320 x 350 x 100 mm (13 x 14 x 4 in)	
Maximum speed (XY / Z)	250 mm/sec (20 / 10"/sec)	
Repeatability	±0.01 mm / axis	
Interpolation	2 Axis	
DispensePro™ software	Included	
High-precision camera	Included	
Ultra-high precision camera with lighting kit	Optional	
Integrated purge/prime	Included	
Tip detection	Included	
Workpiece height detection	Tactile or Laser	
Data storage	PC Storage / USB	
I / O signal port	8 Inputs / 8 Outputs	
Control method	PTP & CP	
Power supply	AC 100 - 240V, 200W	
Unit weight	60 kg (132 lbs.)	

**Contact us today!**

Call **800-746-1334** to speak with a Graco representative, visit **[www.graco.com](http://www.graco.com)** for more information.



©2018 Graco Inc. 350113 Rev.B 11/18 All other brand names or marks are used for identification purposes and are trademarks of their respective owners. All written and visual data contained in this document are based on the latest product information available at the time of publication. Graco reserves the right to make changes at any time without notice.