

# GX21

## Electric Airless Paint Sprayer



Stand model  
24Y680

**DURABLE AND EASY-TO-USE**



Convenient frame design holds gun and hose for maximum portability.

### ***DURABLE DESIGN DELIVERS PROFESSIONAL RESULTS YOU CAN AFFORD.***

The Graco GX21 is a truly dependable sprayer designed to withstand years of use by the busy contractor. The GX21 delivers the performance to handle the demands of daily painting for a wide range of exterior and interior jobs. The GX21 features a convenient easy-to-carry frame design, and it's outfitted with Graco's ProXChange™ Pump Replacement System for fast on-the-job pump repair.





# Performance and Durability for the Pro.

## GX21

<b>DESCRIPTION</b>	<b>PART #</b>
GX21 120V	24Y680
GX21 230V	17H221
<b>SPECIFICATIONS</b>	
MAX TIP SIZE:	0.021
MAX GPM (LPM):	0.47 (1.8)
MAX PSI (BAR):	3000 (207)
MOTOR:	7/8 HP DC
WEIGHT (LBS):	28.5 (13Kg)

- INCLUDES**
- SG3™ Spray Gun
  - RAC® X 515 SwitchTip™ and Guard
  - 1/4 in x 25 ft (6.4 mm x 15 m) Hose

- ACCESSORIES**
- JetRoller System **24U170**  
Paints twice as fast as manual rolling.



Includes Easy-to-Carry Shoulder Strap

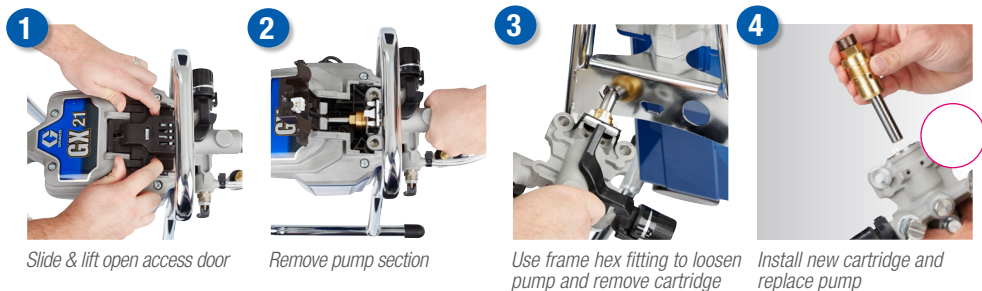


## 1 ProXChange™ Pump Replacement System

### The Do-It-Yourself Pump Repair System

In four simple steps, you can remove and replace the pump cartridge.

- ▶ No tools needed to remove pump
- ▶ Simply lift door to remove pump!



Slide & lift open access door

Remove pump section

Use frame hex fitting to loosen pump and remove cartridge

Install new cartridge and replace pump

**2 PushPrime™**

Assures fast priming every time—loosens stuck inlet check valve in case of priming issues.



PushPrime

**3 ProXChange Piston Pump**

Patented power-piston pump for greater reliability and long life.



Adjustable Pressure Control

**4 Adjustable Pressure Control**

Allows spraying or rolling a wide range of coatings.



InstaClean Filter

**5 Protective Chrome-Plated Stand**

Easy to carry and prevents damage while transporting.

**6 InstaClean™ Filter**

Added filtration to reduce tip clogging. Self cleans with pressure relief through drain valve.

**7 Flexible Clear Tubing**

Easy to use and clean. Spray water or solvent-based finishes directly from 1 or 5-gallon containers.

**Direct Immersion Design**

Draws paint directly from paint buckets.



**Convenient Drip Cup**

Eliminates the chances for paint drips.





**PROXCHANGE**

**Piston Pump  
Repair Cartridge  
now sold at your  
nearest Graco  
Distributor!**

PN 24Y472



**JetRoller™ System**

The JetRoller consists of a spray roller, a spray extension and a hand roller in one complete kit. It fits existing airless sprayers.

PN 24U170



**SALES/  
DISTRIBUTION/  
SERVICE**

Call today for product information or to request a demonstration.  
**877-84GRACO** (1-877-844-7226) or visit us at [www.graco.com](http://www.graco.com).

Graco Inc. is registered to I.S. EN ISO 9001



©2015 Graco Inc. 343961 Rev. A 12/15 Printed in U.S.A. All written and visual data contained in this document are based on the latest product information available at the time of publication. Graco reserves the right to make changes at any time without notice. All other brand names or marks are used for identification purposes and are trademarks of their respective owners. Blue is a trademark of Graco Inc. for Contractor Equipment Sprayers.