



FINE FINISH SPRAYERS

Graco's Complete Line of Fine Finish
Sprayers and Accessories



PROVEN QUALITY. LEADING TECHNOLOGY.

MADE IN THE USA WITH GLOBAL COMPONENTS

THERE IS NOTHING LIKE A GRACO SPRAYER

Experienced contractors know the difference. Graco professional fine finish sprayers are solid investments that perform reliably, year after year.

TRUST YOUR BUSINESS AND REPUTATION TO GRACO

Graco is committed to providing the highest quality finish sprayers available, backed by the industry's best warranty.

AMERICAN BUILT QUALITY SINCE 1926

100% factory-tested and field-proven Graco fine finish sprayers are designed, manufactured, and assembled in the USA.

INDUSTRY-LEADING WARRANTY

Behind every Graco sprayer is the industry's strongest warranty. You may never use Graco's warranty — but if you do, we will be there.



GRACO-ONLY SOLUTIONS TO PROVIDE THE BEST FINISH AND KEEP YOU SPRAYING



(PATENTED)

LIGHTWEIGHT, ERGONOMIC DESIGN

- G40 Spray Gun with RAC X™ FFLP Fine Finish Low Pressure Spray SwitchTips™
- Ultralight trigger pull
- Gun filter integrated into the gun to minimize tip clogs

CORDLESS

(PATENT PENDING)

EXCLUSIVE BREAKTHROUGH CORDLESS TECHNOLOGY

- Industry's only high performance cordless finishing sprayer
- Spray up to 23 liters before charging. Includes 2 DEWALT® FlexVolt® batteries for all day spraying.
- Expanded application capability with freedom from power cords and outlets



(PATENTED)

PROFESSIONAL FINISH QUALITY

Precision-Cut RAC X FFLP SwitchTip

- Finer atomization and soft edges for easier overlapping with pre-orifice design
- Sprays at lower pressures with less overspray and up to 2X life
- Reduces prep and cleanup
- Includes solvent seal for hot solvents



(PATENTED)

SUPERIOR FINISH AND VERSATILITY

- EDGE® II Plus Gun — independent controls for material volume, airflow, and spray fan size
- 4X more productivity
- Quick Release Needles — easily change or clean needle sets, without tools



(PATENTED)

LONGER LIFE AND QUIETER JOBSITES

SmartStart/SmartComp™ Systems

- On-demand power control — if you're not spraying, it's not running
- Reduces jobsite noise, resulting in less fatigue



(PATENTED)

SPRAY IN ANY DIRECTION FlexLiner™ Bag System

- Spray at any angle with no adjustment — even upside down
- Easy cleanup: reuse liner or toss, no suction tube to clean

MADE IN THE USA WITH GLOBAL COMPONENTS

COMPLETE FINE FINISH SPRAYING SOLUTIONS

Graco has the right sprayer for your fine finishing applications. Whether it's a FinishPro™ HVLP, FinishPro GX™ Airless, or a FinishPro II Air-Assisted Airless sprayer, Graco's line of fine finish sprayers yields unmatched results in productivity and quality of finish.



HVLP (HIGH-VOLUME LOW PRESSURE)

- Spray small to medium extreme control jobs
- Standard, ProContractor™ and ProComp packages to fit your needs



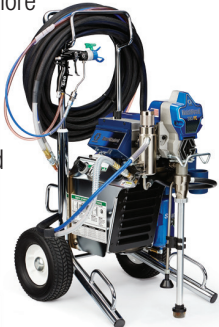
GX AIRLESS

- Spray medium to large projects without thinning
- Fast startup and cleanup with 5.7 liters hopper
- Compact, lightweight design



AIR-ASSISTED AIRLESS

- Large projects requiring large material volumes
- Precision spraying and increased productivity
- Softer pattern, more control, higher transfer, and less overspray
- Quickly switch from air-assisted airless to pure airless spraying



| CLASSIFICATION | FINISHPRO HVLP | FINISHPRO GX 19 AIRLESS | FINISHPRO II AIR-ASSISTED AIRLESS |
|--|--|--|---|
| | EXTREME CONTROL | HIGH PRODUCTIVITY | |
| Technology | High volume, low pressure air results in fine professional finish with extreme control | High-pressured fluid results in fine quality finish with high production rate | High-pressured fluid combined with pressurized air results in fine quality finish with high production rate |
| Finish Quality | Automotive Quality | Furniture/Cabinet Quality | |
| Spray Pattern Size | 1/8 in – 8 in Fan Width (0.3 cm – 20 cm) | 2 in – 12 in Fan Width (4 cm – 30 cm) | |
| Transfer Efficiency (% of material sprayed that adheres to the surface vs. in the air) | 85 – 95% | 50 – 60% | 70 – 80% |
| Typical Applications | Small, Detailed Work Railings, Shutters, Mantels, Tubs, Trim, Staircases, Cabinets, Furniture | Medium – Large Surfaces Doors, Trim, Cabinets, Molding, Garage Doors, Lockers, Decorative Steel Structures, and much more | |
| Characteristics | Most Control | Fast Application | Best Balance Between Speed and Quality |
| Average Job Size | Under 11 Liters | Under 19 Liters | Over 11 Liters |
| Power Source | Corded | Corded or Cordless | Corded |



HVLP SOLUTIONS FOR EVERY APPLICATION

Engineered for superior atomization in the widest range of materials, Graco HVLPs are one of the coolest running, longest life HVLP sprayers on the market. Only Graco is committed to the needs of professional contractors by offering three different series of fine finish airless sprayers: Standard, ProContractor, and ProComp models, to make sure you deliver a quality finish on every job.



GREATER CONTROL (PATENTED)

- Simplified flow control and easy operation — EDGE II gun
- Independent pattern, airflow, and fluid flow controls — EDGE II PLUS gun



INCREASED PRODUCTIVITY

- Convenient FlexLiner Bag System makes filling and spraying fast and easy
- Spray a full quart in any direction, even upside down, without losing prime
- Quick color change and storage of materials with additional FlexLiner cups



EASY CLEANUP

- Reuse FlexLiner cups or toss, no suction tube to clean
- Fast gun cleaning with quick-release needle and no-tools nozzle removal

COOL RUNNING SYSTEMS

- Systems only run when trigger is pulled with SmartStart feature — extending life and reducing heat*
- Set TurboControl turbine speed to match the performance required

ON-DEMAND POWER CONTROL

SmartStart Turbine* (PATENTED)

- Automatically shuts off when not in use — if you're not spraying, it's not running
- Reduces jobsite noise, resulting in less fatigue

SMALLER AND LIGHTER

- Maximum jobsite portability — get jobs done faster and easier
- Supreme durability and turbine protection with rugged stainless steel enclosure
- Easier transport and refilling with onboard gun and cup holder*

*ProContractor and ProComp systems only.

MADE IN THE USA USING GLOBAL COMPONENTS

EDGE II HVLP GUNS

ACHIEVE THE HIGHEST QUALITY FINISH

Gain the competitive edge you need with the cutting-edge technology available only in the HVLP EDGE II and EDGE II PLUS guns.



HVLP EDGE II Gun with FlexLiner — 17P481



HVLP EDGE II Plus Gun with FlexLiner — 17P483



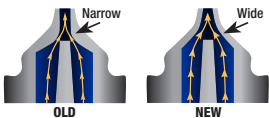
SINGLE USER CONTROL EDGE II Gun

- One simple control to adjust both material and airflow together
- Optimized for most fine finish applications
- Quick adjustment with 360° rotation indicator for repeatable spraying



ULTIMATE CONTROL EDGE II Plus Gun

- Independent user controls
 - Material volume control
 - Air flow control
 - Spray fan size control
- Quick adjustment with full 360° rotation
- Separate material volume and air controls
- Turn to adjust pattern height



GRACO-ONLY TECHNOLOGY ON ALL EDGE II AND EDGE II PLUS GUNS:

FINISH JOBS FASTER

- 4X more productivity to finish jobs in 25% less time
- Increased fluid flow in every needle with exclusive Graco air cap design

MAINTENANCE-FREE SPRAYING IN ANY DIRECTION

FlexLiner Bag System PATENTED

- Spray at any angle with no adjustment—even upside down
- Easy cleanup: reuse liner or toss, no suction tube to clean
- Easy color change with extra cups on hand

THE EASIEST MAINTENANCE

Quick Release Needles PATENTED

- Change out needles with just a click
- Easy to change, easy to clean—no tools needed

ALL-DAY SPRAYING COMFORT

Ergonomic Gun Handle

- Lightweight and comfortable design
- Form-fitted handle stays cool to the touch

ULTRALIGHT TRIGGER

EasyGlide™

- 75% lighter trigger pull than the competition
- 2-finger design provides ultimate control

EASY SPRAY PATTERN ADJUSTMENTS

Adjustable Air Cap

- 3-position rotation quickly changes spray pattern—horizontal, vertical, round



Round Pattern

1/8 in–4 in (0.3 cm–10 cm) Diameter

Horizontal Fan

1 in–8 in (2.5 cm–20 cm) Width

Vertical Fan

1 in–8 in (2.5 cm–20 cm) Width

MADE IN THE USA



SEE WHY CUSTOMERS
CHOOSE FINISHPRO HVLP

| HVLP GUNS | PART # |
|--------------------------------------|--------|
| HVLP EDGE II Gun with FlexLiner | 17P481 |
| HVLP EDGE II Gun with Metal Cup | 17P653 |
| HVLP EDGE II Plus Gun with FlexLiner | 17P483 |
| HVLP EDGE II Plus Gun with Metal Cup | 17P484 |



CHANGE OUT NEEDLES WITH JUST A CLICK—NO TOOLS NEEDED!

How It Works:



1) Remove front air cap and nozzle



2) Slide trigger lever to release needle



3) Pull needle out to release needle

FINISHPRO HVLP 7.0 AND 9.0

STANDARD
SERIES

EVERYDAY RELIABILITY, EXCLUSIVE
TURBOFORCE™ TECHNOLOGY

- Perfect for small jobs
- Only the essential features you need



HIGHER PRODUCTION AND
PERFORMANCE

Exclusive TurboForce Technology

- More pressure throughout each stage
- Less material thinning required with higher airflow and air pressure
- Generates less heat and provides longer turbine life



QUIET, ADJUSTABLE POWER

Turbo Control System

- Adjust the TurboForce turbine speed to match the performance required
- Runs quieter and extends turbine system life
- Reduces heat buildup



SUPERIOR FILTERING

Standard Filtration System

- Washable filter extends motor life and ensures a quality finish
- No tools required to remove
- Outperforms foam filters used on other HVLP sprayers



SINGLE USER CONTROL

EDGE II Gun (PATENTED)

- One simple control to adjust both material and airflow together
- Optimized for most fine finish applications
- Quick adjustment with 360° rotation indicator for repeatable spraying

MAINTENANCE-FREE SPRAYING
IN ANY DIRECTION

FlexLiner Bag System

- Spray at any angle with no adjustment— even upside down
- Easy cleanup: reuse liner or toss, no suction tube to clean
- Easy color change with extra cups on hand

MORE CONTROL AT THE GUN

Super-Flex™ Air Hose

- 15% lighter weight than other leading brands
- No tools needed to connect
- 6m length (Standard Series) or 9m length (ProContractor and ProComp Series)

SMARTER AND LIGHTER

Stainless Steel “Tough Box” Design

- Supreme durability and turbine protection with rugged stainless steel enclosure



FinishPro HVLP 9.0
Standard Series
17R075

Ready to spray: complete with Edge II Spray gun,
#3 Fluid Set, and 6m Super-Flex Air Hose

FINISHPRO HVLP 7.0, 9.0 AND 9.5

PRO
Contractor
SERIES

WORK SMARTER, FINISH MORE JOBS

- Ideal for small-to-medium jobs
- Loaded with features that offer convenience, control, and produce a superior spray finish



ON-DEMAND POWER CONTROL

SmartStart On-Demand Turbine

- Automatically shuts off when not in use—if you’re not spraying, it’s not running
- Reduces jobsite noise, resulting in less fatigue
- Reduces heat and extends turbine life



USER-FRIENDLY OPERATION

TurboControl System with LED Display

- Highly visible LED display to indicate turbine setting
- Light blinks to indicate filters need cleaning



ULTIMATE CONTROL

EDGE II Plus Gun

- With independent user controls for material volume, air flow, and spray fan size
- High flow design increases productivity over other brands
- FlexLiner Bag System

ProContractor Series sprayers also
include most Standard Series features:

- Turbo Control System
- Exclusive TurboForce Technology
- FlexLiner Bag System
- Super-Flex Air Hose
- Stainless Steel “Tough Box” Design

Ready to spray: complete with Edge II PLUS Spray gun,
multiple Fluid Sets, and 9m Super-Flex Air Hose



FinishPro HVLP 9.5
ProContractor Series
17R080

| FINISHPRO HVLP PROCONTRACTOR SPRAYERS | PART # |
|---------------------------------------|--------|
| FinishPro HVLP 7.0 | 17R078 |
| FinishPro HVLP 9.0 | 17R079 |
| FinishPro HVLP 9.5 | 17R080 |

FINISHPRO HVLP 9.5

SUPERIOR PRODUCTIVITY AND DURABILITY



- Ideal for medium-to-large jobs
- Higher production and more control with an expanded range of coatings, producing a superior spray finish
- Double the fluid capacity
- Lighter gun weight minimizes fatigue throughout the day
- Material hose designed to provide easier spraying in tight areas



ON-DEMAND AIR SUPPLY

Integrated Compressor

- Lighter gun weight minimizes fatigue throughout the day
- Pressurize remote cup up to 25 psi
- Allows spraying of thicker materials
- Quick connect hose connections



FEWER REFILLS

1.9 Liters Remote Cup

- Increase productivity and ease-of-use without cup mounted on the gun
- Fine tune pressure with pressure regulator and gauge
- Includes belt hook and convenient shoulder strap



SMALL JOB FLEXIBILITY

0.9 Liters FlexLiner Cup

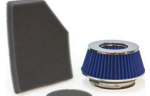
- Includes conversion kit to use gun-mounted 0.9L FlexLiner cup



ProComp Series sprayers also include ALL ProContractor Series features:

- Turbo Control System with LED Display
- Exclusive TurboForce Technology
- FlexLiner Bag System
- Super-Flex Air Hose
- SmartStart On-Demand Turbine
- EDGE II Plus Gun
- Industry-Leading Dual Filtration System
- Utility Toolbox
- Onboard Gun and Cup Holder

FINISHPRO HVLP ACCESSORIES



| ARTISAN AIR VALVE KIT | | | |
|--|--|------------------|---|
| 17S192 | Provides the ultimate air control for specialty, multi-spec applications Plugs directly into back of EDGE II guns | | |
| HVLP EDGE II GUN EXTENSION, 12 IN (30 CM) | | | |
| 17P491 | Attaches directly to the HVLP EDGE II gun for extended reach and spraying hard-to-reach areas Ability to spray in any direction – 360° rotation | | |
| QUICK-RELEASE FLUID SETS | | | |
| For HVLP EDGE II guns only | | | |
| Change out needles from the front of the gun with just a click | | | |
| PART # | NEEDLE | SIZE | MATERIAL |
| 17P485 | #2 | .032 in (0.8 mm) | Ultra fine finish with inks, dyes, non-wiping stains, automotive finishes |
| 17P486 | #3 | .051 in (1.3 mm) | Fine finish lacquers, stains, enamels, epoxies, urethane, varnish |
| 17P487 | #4 | .071 in (1.8 mm) | High output with enamels, epoxies, urethane, varnish, primers |
| 17P488 | #5 | .087 in (2.2 mm) | Higher output with enamels, epoxies, urethane, varnish, primers, latex, multi-spec |
| 17P489 | #6 | .098 in (2.5 mm) | Higher output with enamels, epoxies, urethane, varnish, primers, latex, multi-spec |
| 17P490 | #7 | .115 in (2.8 mm) | Highest output with enamels, epoxies, urethane, varnish, primers, latex, multi-spec |
| HVLP CUPS, POTS AND LINERS | | | |
| 17R462 | 32 oz (.94 L) FlexLiner HVLP Assembly (Cup, Liner, Lid, Cap) | | |
| 17A226 | 32 oz (.94 L) FlexLiner Bags (3-Pack) | | |
| 17P212 | 32 oz (.94 L) FlexLiner Bags (25-Pack) | | |
| 244130 | 1 qt (.9 L) Siphon Metal Cup | | |
| 196468 | 1 qt (.94 L) Siphon metal cup adapter | | |
| 17S115 | 1/2 qt (.47 L) Cup over kit – EDGE II only | | |
| 17S116 | 1/2 qt (.47 L) Cup over kit – EDGE II PLUS only | | |
| 287819 | 2 qt (1.9 L) Cup with Lid and 5 ft (1.5 m) Material and Air Hose – for use with ProComp Sprayer | | |
| FILTERS AND STRAINERS | | | |
| 17R296 | Standard Series Filter Kit | | |
| 17R298 | ProContractor and ProComp Series Filter Kit | | |
| SUPER-FLEX HOSES AND FITTINGS | | | |
| 17R299 | Super-Flex Whip Air Hose, 4 ft (1.2 m) | | |
| 17R300 | Super-Flex Air Hose, 20 ft (6.1 m) | | |
| 257159 | Super-Flex Air Hose, 30 ft (9 m) | | |
| 241423 | Super-Flex Material and Air Hose Assembly with Quick Connects, 30 ft (9 m) – Use with Remote Gun (not included) | | |
| 240476 | Material Hose, 3/8 in x 30 ft (4.8 mm x 9 m) – Use with Remote Gun (not included) | | |
| 17R301 | Quick Disconnect Ball Valve (Air Hose to Gun) | | |
| 240282 | Quick Disconnect Fitting (Air Hose to Sprayer) | | |
| 240069 | 2 Gun Y Connector (f/m/m) | | |
| MAINTENANCE AND REPAIR KITS | | | |
| 256960 | HVLP EDGE II Gun Packing Repair Kit | | |
| 17P708 | HVLP EDGE II Gun Full Seal Kit | | |
| 17P709 | HVLP EDGE II Gun Air Cap | | |
| 256957 | Quick Clean Check Valve (Full Assembly) | | |
| 256956 | Quick Clean Check Valve Repair Kit (3-Pack) | | |
| 256953 | Cleaning Brush Kit | | |
| 256954 | Deluxe Cleaning Kit – Includes Detailed Brushes and Picks | | |
| M71425 | 2 qt (1.9 L) Remote Cup Gaskets (5-Pack) | | |
| 256959 | Remote Cup Shoulder Strap | | |
| M70702 | #4 Ford Viscosity Cup | | |

MADE IN THE USA

| FINISHPRO HVLP PROCOMP SPRAYER | PART # |
|--------------------------------|--------|
| FinishPro HVLP 9.5 | 17R081 |

FINISHPRO GX 19 CORDED

AIRLESS SPRAYER

The fast, portable, and affordable solution for small finishing jobs that every finishing contractor encounters. Perfect for a dedicated lacquer or water based sprayer.

GRACO-ONLY TECHNOLOGY TO PROVIDE THE PERFECT FINISH AND KEEP YOU SPRAYING:

EASY MATERIAL HANDLING

5.7 Liters Hopper

- Ideal for spraying small amounts of material
- Faster cleanup with smooth inside surface — solvent resistant
- Never mess with a drain line again — drain line hook keeps drain tube in place



EASY MAINTENANCE AND LONG LIFE

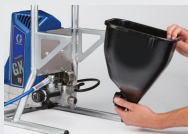
ProX™ Power-Piston Pump

- Exceptional durability and long-life piston pump
- Exclusive, lifetime lubricated wiper pad for maintenance-free operation
- Modular pump components for easy maintenance



ELIMINATE DOWNTIME

Service the piston pump in 4 simple steps with a modular pump cartridge — no tools needed



1) Remove hopper



2) Unlatch and lift door



3) Remove pump



4) Replace cartridge

PERFECT AIRLESS FINISH

RAC X™ Fine Finish Low Pressure (FFLP) Switchtip™

- Perfect Airless Finish
- Easiest pattern overlap
- Up to 2X the tip life of standard tips
-

MAXIMUM CONTROL AND COMFORT

FTx™ Spray Gun

- Easy Out™ 100 mesh gun filter installed to minimize tip clogs and protect finish
- EasyGlide Swivel provides maximum flexibility for effortless hose management

EXTREMELY PORTABLE

- Lighter than any competitive system
- Easy Carry Handle makes transportation easy

GET MORE WORK DONE

- Powerful Brushed DC Motor



FINISHPRO GX 19 CORDLESS

AIRLESS SPRAYER

IMPROVE YOUR FINISH WITH UNMATCHED PERFORMANCE, PORTABILITY, AND MOBILITY

INCLUDES ALL THE FEATURES OF THE GX 19 CORDED, PLUS THE FOLLOWING ADDED CAPABILITIES



ULTIMATE POWER AND PROVEN PERFORMANCE

Powered By DeWALT®

- High capacity 6ah FlexVolt batteries — spray up to 23 liters (2 batteries) before charging is required
- Delivered complete with two batteries

Brushless DC Motor

- Powerful brushless DC motor provides extended battery run time
- Lightweight, compact design allows for increased portability



PERFECT AIRLESS FINISH

RAC X™ Fine Finish Low Pressure (FFLP) Switchtip™ (PATENTED)

- Perfect Airless Finish
- Easiest pattern overlap
- Up to 2X the tip life of standard tips

SPRAY IN THE TIGHTEST AREAS WITH EASE

Contractor PC Compact™ Gun (PATENTED)

- Smallest most light weight gun on the market
- 50% lighter trigger pull
- ProConnect cartridge allows you to rebuild the gun in seconds



SEE WHY CUSTOMERS CHOOSE FINISHPRO GX 19 CORDLESS



THE INDUSTRY'S FASTEST, MOST PORTABLE FINISHING SPRAYER EVER BUILT!

| AIRLESS SPRAYERS | PART # |
|------------------------|--------|
| FinishPro GX 19 Corded | 17H223 |

| AIRLESS SPRAYERS | PART # |
|--------------------------|--------|
| FinishPro GX 19 Cordless | 25U855 |

AIR-ASSISTED AIRLESS TECHNOLOGY

HVLP QUALITY FINISH AT THE SPEED OF AN AIRLESS SPRAYER

Material is delivered to the gun at lower pressure than traditional airless (500-1500 psi vs. 1500-3000 psi) and partially atomized through a small tip. Full atomization is achieved by adding a small amount of air (5-35 psi) to the edges of the spray fan, resulting in a softer pattern, more control, higher transfer, and less overspray.

HIGH-PERFORMANCE FINE FINISH SPRAYING

FINISHPRO II AIR-ASSISTED AIRLESS SPRAYERS

Only Graco delivers industry-leading features along with proven quality and unmatched performance in a portable, self-contained, air-assisted airless system.

ENDURANCE PISTON PUMP

lasts 2X longer than the next leading brand

ONBOARD AIR COMPRESSOR
with SmartComp delivers a superior finish

FinishPro II 395 PC Pro
17C321

G40 AIRLESS GUN
with an ultralight trigger pull and ergonomic fit

SMARTCONTROL WITH DIGITAL DISPLAY
accurately shows spray pressure with out pressure fluctuations



PRODUCTION FINE FINISH DELIVERS:

- High end finish quality at production speeds with no thinning
- Low overspray — 70-80% transfer efficiency
- Ultra light trigger pull and ergonomic gun provides you the ability to easily spray all day



SWAP YOUR PUMP IN LESS THAN 1 MINUTE — NO SPECIAL TOOLS, PINS OR PARTS TO LOSE

Fast Pump Removal - 3 Simple Steps



1) Loosen the clamping nut



2) Open door and remove pump



3) Remove hose and suction tube



ELIMINATE COSTLY DOWNTIME

ProConnect

(Available on FinishPro II Models)

- No-Tools Pump Replacement System
- Quickly repair your pump on the jobsite
- Eliminate downtime waiting on replacement parts or service
- Exceptional durability and long life piston pump

FINISHPRO II 395 PC

AIR-ASSISTED AIRLESS

With features that make a great sprayer even better, the FinishPro II 395 PC is Graco's premier solution to fine finishing. It delivers a high-quality finish at a high production rate and can handle the most challenging materials.



ULTIMATE APPLICATION VERSATILITY

Two Sprayers in One

- Switch between air-assisted to airless spraying modes with the flip of a switch

Single Selector Switch

- Simple, color-coded labels easily identify airless and air-assisted modes



SUPERIOR FINISH AND LONG LIFE

SmartComp

- Gun trigger-activated compressor — it's only running when you're spraying!
- Instant air to the gun with zero lag
- Reduces jobsite noise, resulting in less fatigue
- Reduces moisture entering the system and extends compressor life

High-Output Onboard Air Compressor

- Ideal for on-site finish jobs
- Delivers 3.2 cfm at 35 psi — enough air to break up the heaviest materials

ELIMINATE COSTLY DOWNTIME

ProConnect Pump Replacement System

- No-tools Pump Replacement System
- Quickly repair your pump on the jobsite
- Eliminate downtime waiting on replacement parts or service
- Exceptional durability and long-life piston pump

SELF-CONTAINED AND PORTABLE

- One plug runs the entire unit, simplifying jobsite operation

INCREASED SPRAY PERFORMANCE

SmartControl with Digital Display

- Consistent spray fan without pressure fluctuations at all spraying pressures
- Digital display accurately shows spraying pressure

THE MOST RELIABLE PUMP

Chromex™ Endurance Piston Pump

- Lasts 2X Longer than the next
- Faster cleaning with the QuikAccess intake foot valve

LESS OVERSPRAY AND INCREASED PUMP LIFE

Precision-Cut RAC X FF LP SwitchTip

- Sprays at lower pressures with less overspray delivering up to 2X life
- Pre-orifice design produces a perfect airless finish
- Finer atomization and soft edges for easier overlapping
- Reduces prep and cleanup
- Includes solvent seal for hot solvents

INCREASED FLEXIBILITY AND MANEUVERABILITY

Super-Flex Hose Set

- Enables you to work in tight spaces and deliver the best finish quality
- Extremely lightweight to reduce fatigue
- Reduced material buildup and increased durability with Flex Wrap hose skin

PREMIER PERFORMANCE

G40 Spray Gun

- Industrial-grade quality delivers superior finishing results
- Integrated air valve improves gun handling
- Precision-Cut RAC X FF LP SwitchTip
- Precision-Cut Fine Finish Flat Tip

FINISHPRO II 595 PC PRO

AIR-ASSISTED AIRLESS

The FinishPro II 595 PC Pro is ideal for large commercial and industrial jobs with more features and higher performance to get the job done faster.

TWO SPRAYERS IN ONE — RIGHT OUT OF THE BOX!

1. HIGH PRODUCTION AIR ASSISTED AIRLESS
DEAL FOR HIGH END FINE FINISH JOBS

2. HIGH PRODUCTION AIRLESS SPRAYER
IDEAL FOR EXTERIOR AND INTERIOR JOBS



INCLUDES ALL THE FEATURES OF THE FINISHPRO II 395 PC, PLUS

HIGHER FLOW FOR MORE PRODUCTIVITY

- The highest performing air-assisted airless sprayer! 50% more performance to support fine finish and high production needs.

INCREASED SPRAY CONSISTENCY

SmartControl with Digital Display

- Delivers a consistet spray fan without pressure fluctuation
- Ideal for low pressure tips for fine finish work and low overspray applications
- Digital display accurately shows spraying pressure



MORE SPRAYING AND LESS CLEANING

FastFlush™ System

- Clean the pump 4X faster
- High-velocity fluid flow delivered with higher motor speed



MADE IN THE USA

| AIR-ASSISTED AIRLESS SPRAYER | PART # |
|------------------------------|--------|
| FinishPro II 395 PC | 17C321 |

| AIR-ASSISTED AIRLESS SPRAYERS | PART # |
|-------------------------------|--------|
| FinishPro II 595 PC | 17E915 |

G40

AIR-ASSISTED AIRLESS GUN

The premier Air-Assisted Airless gun in the industry provides an ultra-light trigger pull and ergonomic fit. The G40 comes standard with all FinishPro II sprayers.

GRACO-ONLY TECHNOLOGY FOR THE ULTIMATE FINISH



INDUSTRIAL FINISH QUALITY

- An industrial-grade finishing gun, built for years of uninterrupted service



LIGHTWEIGHT, ERGONOMIC DESIGN

- Becomes an extension of your hand so you deliver a perfect finish—every time

SOFTER SPRAY PATTERN

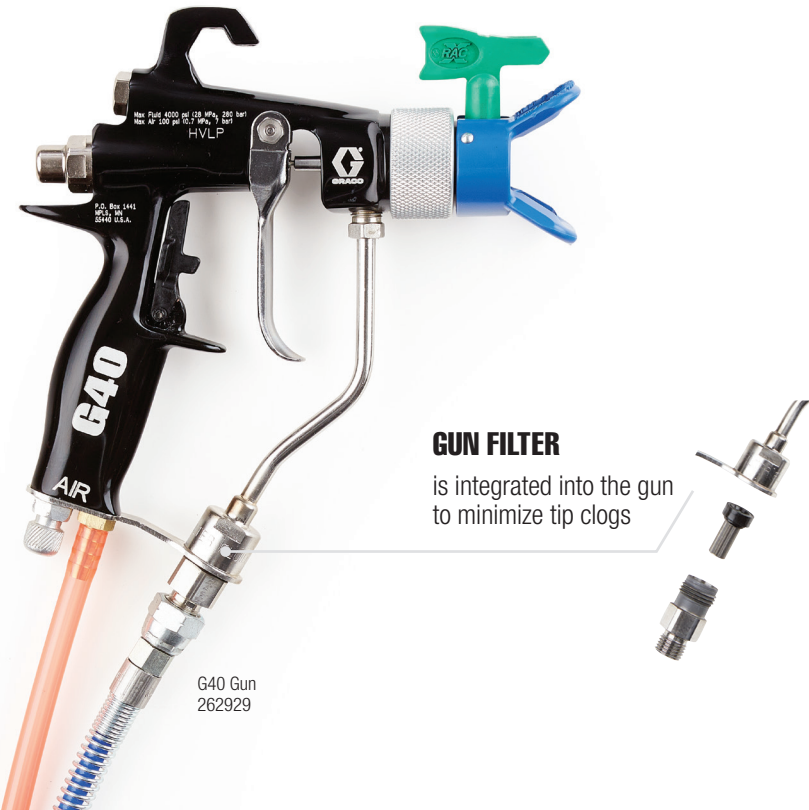
RAC X Air Cap

- Accepts RAC X SwitchTips for quick and easy tip clog clean-out
- Softer, more consistent spray pattern—eight air ports inject air closer to the tip

MINIMIZE TIP CLOGS

Gun Filter

- Integrated into the gun
- Fine 100 mesh results in a superior finish



GUN FILTER

is integrated into the gun to minimize tip clogs

G40 Gun
262929

FAST AND EASY ADJUSTMENTS

Air Adjustment Valve

- Air control at the gun allows “on the fly” adjustments to maximize performance

ULTIMATE PERFORMANCE

Precision Cut Fine Finish Flat Tip Kit

- Air cap utilizes flat tips
- Extremely high performance in low-viscosity, light-bodied materials

INLINE MOISTURE REMOVAL

Air Moisture Filter

- Desiccant material removes all moisture from air supplied by the compressor
- Improved performance when spraying solvent-based finishes
- Disposable filter design

TIP TECHNOLOGY

FINISHPRO AIRLESS

Only Graco gives you the ability to customize your air-assisted airless sprayer to fit your needs — whether you need fast high-production spraying or a smooth HVLP-like finish.



VS



RAC X FF LP SWITCHTIPS

Characteristics:

Graco's exclusive RAC X Fine Finish Low Pressure Tips delivers the industry's best finish at the lowest airless spray pressure. Sprays at up to 50% lower pressure.

- Easiest pattern overlap
- Less overspray
- Up to 2X life

Recommended Uses:

- When speed and finish quality are equally important

PRECISION-CUT FINE FINISH FLAT TIPS

Characteristics:

The Precision-Cut Flat Tip is designed with stains and lacquers in mind and produces the best atomization for extremely smooth finishes for furniture and similar applications.

- Delivers softest spray fan
- Offers fan width control
- Closer to HVLP quality
- Zero air cap buildup

Recommended Uses:

- Where finish quality is the #1 requirement



RAC X LOW PRESSURE SWITCHTIPS (FF LPXXX)

| | IN | MM | .008 | .010 | .012 | .014 | .016 | .018 | .020 |
|-----------|-----------------|-----------|------|------|------|------|------|------|------|
| FAN WIDTH | 2-4 | (51-102) | 108 | 110 | 112 | | | | |
| | 4-6 | (102-152) | 208 | 210 | 212 | 214 | | | |
| | 6-8 | (152-203) | 308 | 310 | 312 | 314 | | | |
| | 8-10 | (203-254) | | 410 | 412 | 414 | | | |
| | 10-12 | (254-305) | | 510 | 512 | 514 | 516 | 518 | 520 |
| | 12-14 | (305-356) | | | 612 | 614 | 616 | 618 | 620 |
| | Flow Rate (gpm) | | .07 | .11 | .15 | .21 | .27 | .35 | .43 |
| | Flow Rate (lpm) | | .26 | .41 | .59 | .80 | 1.04 | 1.32 | 1.63 |



RAC X LOW PRESSURE SWITCHTIPS (LPXXX)

| | IN | MM | .013 | .015 | .017 | .019 | .021 | .023 | .025 | .027 |
|-----------|-------|-----------|------|------|------|------|------|------|------|------|
| FAN WIDTH | 6-8 | (152-203) | 313 | 315 | | | | | | |
| | 8-10 | (203-254) | | 415 | 417 | 419 | 421 | 423 | 425 | |
| | 10-12 | (254-305) | | 515 | 517 | 519 | 521 | 523 | 525 | 527 |
| | 12-14 | (305-356) | | | 617 | 619 | 621 | 623 | 625 | 627 |
| | 14-16 | (356-406) | | | | | | 723 | 725 | |



PRECISION-CUT FLAT TIPS AAM FLAT TIP (AAMXXX)

| | IN | MM | .007 | .009 | .011 | .013 | .015 | .017 |
|-----------|-----------------|-----------|------|------|------|------|------|------|
| FAN WIDTH | 2-4 | (51-102) | | 109 | 111 | | | |
| | 4-6 | (102-152) | 207 | 209 | 211 | 213 | 215 | 217 |
| | 6-8 | (152-203) | 307 | 309 | 311 | 313 | 315 | 317 |
| | 8-10 | (203-254) | | 409 | 411 | 413 | 415 | 417 |
| | 10-12 | (254-305) | | 509 | 511 | 513 | 515 | 517 |
| | 12-14 | (305-356) | | | 611 | 613 | 615 | 617 |
| | Flow Rate (gpm) | | .05 | .09 | .12 | .18 | .24 | .31 |
| | Flow Rate (lpm) | | .20 | .33 | .49 | .69 | .91 | 1.17 |

Water @ 1000 psi (70 bar, 7.0 Mpa) - paints with a higher viscosity will decrease the flow rate. Order desired tip (part no. AAMxxx) from chart above. Example: for a tip with a 0.009 orifice and a 6 in (250 mm) pattern, order AAM309

ACCESSORIES

FINISHPRO AIR-ASSISTED AIRLESS & AIRLESS



GUNS & HOSES

| PART # | DESCRIPTION |
|--------|--|
| 19Y443 | Contractor PC Compact w/RAC X FF LP 210 SwitchTip |
| 17J261 | FTx Gun with RAC X FF LP 210 SwitchTip |
| 262929 | G40 Air-Assisted Airless Gun |
| 24U891 | G40 Gun with RAC X Tip and 50 ft Super-Flex Hose Set |
| 24U578 | 25 ft (7.6 m) Super-Flex Fluid and Air Hose Set |
| 24U579 | 50 ft (15.2 m) Super-Flex Fluid and Air Hose Set |
| 278750 | 1/8 in x 6 ft (3.2 mm x 1.8 m) Super-Flex Whip-Fluid |
| 278751 | 1/4 in x 6 ft (6.4 mm x 1.8 m) Super-Flex Whip-Air |
| 24U577 | 50 ft (15.2 m) Flex Wrap Hose Protector |
| 24U576 | 25 ft (7.6 m) Flex Wrap Hose Protector |
| 214698 | 3/16 in x 25 ft (4.76 mm x 7.6 m) Blue Max II Hose |



BATTERY & CHARGER

| PART # | DESCRIPTION |
|--------|-------------------------------------|
| 20A164 | DeWALT 18V/54V FlexVolt 6ah Battery |
| 20A167 | DeWALT Fan-Cooled Fast Charger |



PISTON PUMP REPAIR PARTS

| PART # | DESCRIPTION |
|--------|--|
| 17C487 | Replacement Pump—replace pump on the job (for use on FinishPro II 395 PC and 595 PC Pro sprayers only) |
| 24Y472 | ProXChange Repair Kit (for use on FinishPro GX 19 sprayer only) |



MAINTENANCE & REPAIR KITS

| PART # | DESCRIPTION |
|--------|---|
| 17H171 | Hopper Assembly 1.5 gal (5.7 L) molded hopper attaches to sprayer in place of inlet suction hose. Ideal for spraying small amounts of material. Lid included. Smooth inside cleans up fast. |
| 288514 | Precision Cut Flat Tip Conversion Kit—G40 Gun |
| 288839 | RAC X Conversion Kit-G40 Gun |
| 289108 | Severe Solvents Suction Set (for use on FinishPro II 395 PC and 595 PC Pro sprayers only) |
| 288839 | G40 RAC X Air Cap |



FILTERS & STRAINERS

| PART # | DESCRIPTION |
|--------|---|
| 224454 | G40 Gun Filter, 60 Mesh (5-Pack) |
| 224453 | G40 Gun Filter, 100 Mesh (5-Pack) |
| 257129 | Contractor II™ and FTx Gun Filter, 60 Mesh (1 per card) |
| 287033 | Contractor II and FTx Gun Filter, 100 Mesh (1 per card) |
| 257130 | Contractor II and FTx Gun Filter, 200 Mesh (1 per card) |
| 19Y355 | Contractor PC Compact Gun Filter 60 Mesh (1 per card) |
| 19Y356 | Contractor PC Compact Gun Filter 1000 Mesh (1 per card) |
| 257094 | ProX™ Power-Piston Pump Manifold Filter, 40 Mesh |
| 246384 | Easy Out Manifold Filter, Black 60 Mesh |
| 246382 | Easy Out Manifold Filter, Blue 100 Mesh |
| 246383 | Easy Out Manifold Filter, Red 200 Mesh |
| 246385 | Pump Inlet Strainer |
| 127465 | Disposable, Inline Air Moisture Filter (single) |
| 24U981 | Disposable, Inline Air Moisture Filter (5-Pack) |
| 24U982 | Inline Air Moisture Filter (25-Pack) |



NEW!
Airless Finishing Kit
Complete fine finish
jobs faster



12% vs PURCHASING INDIVIDUAL COMPONENTS

Includes: 5.7 Liters Hopper, RAC X Fine Finish Low Pressure SwitchTip FFLP 210, BlueMax II Airless Hose 3/16" x 7.6m, BlueMax II Airless Whip Hose 1/8" x 0.9m, 100 mesh Easy Out™ manifold and gun filters

AIRLESS HANDHELD SPRAYERS

BREAKTHROUGH PERFORMANCE, FINISH AND RELIABILITY

Graco airless handheld sprayers are ideal for maximizing productivity on small fine finish jobs — with top-notch speed, Perfect Airless Finish™ and everyday reliability.



THE FASTEST WAY TO FINISH SMALL JOBS

- Spray anywhere in seconds with unmatched portability

PERFECT AIRLESS FINISH

Smooth and Even at Any Speed

- Achieve a flawless, single-coat finish with no thinning required
- Exclusive SmartControl pressure management technology
- Same performance as the — right in the palm of your hand



RELIABILITY DELIVERED

Every Job, Every Time

- Clean up in minutes with all new easy-to-clean design
- Prime and spray in seconds — no inlet valves to get stuck
- Reliable priming with Automatic Outlet Ball Knocker

POWERED BY DeWALT

- Compatible with any 18 V Lithium-Ion DeWALT battery

ELIMINATE COSTLY DOWNTIME

Durable Triax™ Pump (PATENTED) with ProConnect

Easily swap your durable, Triax triple piston pump in minutes:

- 1) Remove the cover with a screwdriver
- 2) Remove the old pump from the sprayer
- 3) Place new pump into sprayer

SPRAY IN ANY DIRECTION

FlexLiner Bag System (PATENTED)

- Spray at any angle with no adjustment—even upside down
- Easy cleanup: reuse liner or toss, no suction tube to clean
- Easy color change with extra cups on hand

LESS OVERSPRAY AND INCREASED PUMP LIFE

Precision-Cut RAC X FF LP SwitchTips

- Sprays at lower pressures with less overspray and up to 2X life
- Finer atomization and soft edges for easier overlapping with pre-orifice design
- Reduces prep and cleanup
- Includes solvent seal for hot solvents



| | | EXTREME CONTROL | | | | | |
|----------------|-----------------------------|---------------------------------------|--------------------------|--------------------------|--|--------------------------|--------------------------|
| | | Small Jobs / Thin Viscosity Materials | | | Medium to Large Jobs / Capable of Atomizing Thicker Coatings | | |
| | | FINISHPRO HVLP 7.0 | FINISHPRO HVLP 9.0 | FINISHPRO HVLP 7.0 | FINISHPRO HVLP 9.0 | FINISHPRO HVLP 9.5 | FINISHPRO HVLP 9.5 |
| SPECIFICATIONS | Technology | High Volume Low Pressure | High Volume Low Pressure | High Volume Low Pressure | High Volume Low Pressure | High Volume Low Pressure | High Volume Low Pressure |
| | Maximum psi (bar) | 7.0 (.48) | 9.0 (.62) | 7.0 (.48) | 9.0 (.62) | 9.5 (.65) | 9.5 (.65) |
| | Turbine Stages | 3-Stage | 4-Stage | 3-Stage | 4-Stage | 5-Stage | 5-Stage |
| | Cup qt (L) | 1 (1) | 1 (1) | 1 (1) | 1 (1) | 1 (1) | 2 (1.9) |
| | Weight lb (kg) | 18 (8.1) | 19 (8.6) | 23 (10.4) | 24 (10.8) | 26 (11.7) | 30 (13.6) |
| | Max Hose | 40 ft (12 m) | 40 ft (12 m) | 60 ft (18 m) | 60 ft (18 m) | 60 ft (18 m) | 60 ft (18 m) |
| | Air Ball Valve Included | No | No | Yes | Yes | Yes | Yes |
| | Artisan Air Valve Installed | No | No | Yes | Yes | Yes | Yes |



| SERIES TYPE | | STANDARD | | PROCONTRACTOR | | | PROCOMP |
|-------------|-------------------------|---------------------------------|---------------------------------|---------------------------------|--|--|--|
| MODEL | Part Number | 17R074 | 17R075 | 17R078 | 17R079 | 17R080 | 17R081 |
| INCLUDES | Gun | EDGE II | EDGE II | EDGE II PLUS | EDGE II PLUS | EDGE II PLUS | EDGE II PLUS |
| | Hose | 20 ft (6 m) Super-Flex Air Hose | 20 ft (6 m) Super-Flex Air Hose | 30 ft (9 m) Super-Flex Air Hose | 30 ft (9 m) Super-Flex Air Hose | 30 ft (9 m) Super-Flex Air Hose and | 30 ft (9 m) Super-Flex Air Hose and |
| | Whip Hose | – | – | – | – | Yes | Yes |
| | Quick Release Fluid Set | #3 (.051 in, 1.3 mm) | #3 (.051 in, 1.3 mm) | #3 (.051 in, 1.3 mm) | #3 (.051 in, 1.3 mm) #4 (.071 in, 1.8 mm) #5 (.087 in, 2.2 mm) | #3 (.051 in, 1.3 mm) #4 (.071 in, 1.8 mm) #5 (.087 in, 2.2 mm) | #3 (.051 in, 1.3 mm) #4 (.071 in, 1.8 mm) #5 (.087 in, 2.2 mm) |
| | Filter | Foam | Foam | Automotive Main Filter | Automotive Main Filter | Automotive Main Filter | Automotive Main Filter |
| | | | | | | | |
| WEAR PARTS | Gun Maintenance Kit | 256960 | 256960 | 256960 | 256960 | 256960 | 256960 |
| | Gun Repair Kit | 17P708 | 17P708 | 17P708 | 17P708 | 17P708 | 17P708 |
| MANUAL | Turbine | 3A4967 | 3A4967 | 3A4967 | 3A4967 | 3A4967 | 3A4967 |
| | Gun | 3A4980 | 3A4980 | 3A4980 | 3A4980 | 3A4980 | 3A4980 |

| | | HIGH PRODUCTIVITY | | | |
|----------------|-------------------|------------------------|--------------------------|----------------------|-------------------------|
| | | Small / Medium Jobs | | | Medium / Large Jobs |
| | | FINISHPRO GX 19 CORDED | FINISHPRO GX 19 CORDLESS | FINISHPRO II 395 PC | FINISHPRO II 595 PC PRO |
| SPECIFICATIONS | Technology | Airless | Airless | Air-Assisted Airless | Air-Assisted Airless |
| | Flow gpm (lpm) | .38 (1.44) | .38 (1.44) | .47 (1.78) | .70 (2.6) |
| | Max Tip – Airless | .019 | .019 | .021 | .027 |
| | Weight lb (kg) | 31 (14.1) | 29 (13.2) | 107 (48.5) | 108 (49.0) |
| | Motor hp (dc) | 1/2 | 1/2 Brushless | 7/8 TEFC | 1.6 Brushless |
| | Hose Wrap | – | – | Flex Wrap | Flex Wrap |
| | Compressor Output | – | – | 3.2 cfm at 35 psi | 3.2 cfm at 35 psi |
| | | | | | |



| MODEL | Part Number | 17F924 | 25U341 | 17C417 | 17E915 |
|----------|------------------|----------------------------------|--|---|---|
| INCLUDES | Power Source | Corded | (2) DEWALT 18V/54V FlexVolt 6.0 ah Batteries and (1) Fan-Cooled Fast Charger | Corded | Corded |
| | Filter(s) | 100 Mesh Gun Filter | 100 Mesh Gun Filter | 100 Mesh Gun Filter | 100 Mesh Gun Filter |
| | Tips | RAC X FFLP210 | RAC X FFLP210 | RAC X FFLP210 RAC X LTX517 AAM309 | RAC X FFLP210 RAC X LTX517 AAM309 |
| | Fluid Hose | 3/16 in x 25 ft (4.8 mm x 7.6 m) | 3/16 in x 25 ft (4.8 mm x 7.6 m) | 1/4 in x 50 ft (6.4 cm x 15.2 m) | 1/4 in x 50 ft (6.4 cm x 15.2 m) |
| | Fluid Whip Hose | – | – | 1/8 in x 6 ft (3.2 mm x 1.8 m) | 1/8 in x 6 ft (3.2 mm x 1.8 m) |
| | Air Hose | – | – | 3/8 in x 50 ft (9.5 mm x 15.2 m) | 3/8 in x 50 ft (9.5 mm x 15.2 m) |
| | Air Whip Hose | – | – | 1/4 in x 6 ft (6.4 mm x 1.8 m) | 1/4 in x 6 ft (6.4 mm x 1.8 m) |
| | Gun | FTx with RAC X SwitchTip | Contractor PC Compact with RAC X SwitchTip | G40 with RAC X SwitchTip and Flat Tip | G40 with RAC X SwitchTip and Flat Tip |
| | SmartComp | – | – | Yes | Yes |
| | Display | Pressure Gauge | Pressure Gauge | Digital | Digital |
| MANUAL | Operation/Parts | 3A3212 | 3A8429 | 334730 | 334598 |
| PUMP | Replacement Pump | 24Y472 ProX (Replacement Kit) | 24Y472 ProX (Replacement Kit) | 17C487 (Full Endurance Pump) | 17C487 (Full Endurance Pump) |



ABOUT GRACO

PROVEN QUALITY. LEADING TECHNOLOGY.

Founded in 1926, Graco is a world leader in fluid handling systems and components. Graco products move, measure, control, dispense and apply a wide range of fluids and viscous materials used in vehicle lubrication, commercial and industrial settings.

The company's success is based on its unwavering commitment to technical excellence, world-class manufacturing and unparalleled customer service. Working closely with qualified distributors, Graco offers systems, products and technology that set the quality standard in a wide range of fluid handling solutions. Graco provides equipment for spray finishing, protective coating, paint circulation, lubrication, and dispensing sealants and adhesives, along with power application equipment for the contractor industry. Graco's ongoing investment in fluid management and control will continue to provide innovative solutions to a diverse global market.

GRACO LOCATIONS

MAILING ADDRESS

P.O. Box 1441
Minneapolis, MN 55440-1441
Tel: +612-623-6000
Fax: +612-623-6777

AMERICAS

MINNESOTA

Worldwide Headquarters
Graco Inc.
88-11th Avenue N.E.
Minneapolis, MN 55413

EUROPE

BELGIUM

European Headquarters
Graco N.V.
Industrieterrein-Oude Bunders
Slakweidestraat 31
3630 Maasmechelen,
Belgium
Tel: +32 89 770 700
Fax: +32 89 770 777

ASIA PACIFIC

AUSTRALIA

Graco Australia Pty Ltd.
Suite 17, 2 Enterprise Drive
Bundoora, Victoria 3083
Australia
Tel: +61 3 9468 8500
Fax: +61 3 9468 8599

CHINA (AP Headquarters)

Graco Fluid Equipment
(Shanghai) Co., Ltd
Building 7, NO. 1 - 2, Wenshui
Road 299
Jing'an District, Shanghai
200436, P.R.China
Tel: +86 512 6260 5711
Fax: +86 21 6495 0077

INDIA

Graco India Pvt Ltd
Plot No 295, Udyog Vihar Phase-IV
Gurugram - 122015 (Haryana)
India
Phone: +91 124 661 0200
Fax: +91 124 661 0201

JAPAN

Graco K.K.
1-27-12 Hayabuchi
Tsuzuki-ku
Yokohama City, Japan 2240025
Tel: +81 45 593 7300
Fax: +81 45 593 7301

KOREA

Graco Korea Inc.
38, Samsung 1-ro 1-gil,
Hwaseong-si, Gyeonggi-do.
18449
Republic of Korea
Tel : +82 31 8015 0961
Fax : +82 31 613 9801

SALES/ DISTRIBUTION/ SERVICE

Call today for product information or to request a demonstration.

CHINA/SOUTH EAST ASIA: + 86 512 62605711

INDIA: +91 124 6610200

AUSTRALIA and NEW ZEALAND: +61 3 9468 8500

Or visit us at www.graco.com



EVERY GRACO PRODUCTS COMES WITH A+ CUSTOMER SERVICE.

3-YEAR WARRANTY*

Coverage against defects in materials and workmanship on the entire striper.