



REACTOR[®] 3

Smart Drum-to-Gun Spray Technology
Expands Your Business and Improves Profitability



PROVEN QUALITY. LEADING TECHNOLOGY.



THERE IS NOTHING LIKE A GRACO REACTOR 3 PROPORTIONER

Experienced contractors know the difference. Graco professional Reactor 3 proportioners are solid investments that perform reliably, year after year.

OPTIMIZED SPRAY PERFORMANCE AND RATIO PROTECTION

Fully connected from drum to gun for improved material supply and temperature control which guarantees the best performance.

INTUITIVE, ROBUST AND SIMPLE DESIGN

Get more work done with less effort. The touchscreen means easy operation, the system is designed for consistent output, long lifetime and simple maintenance.

INCREASE PRODUCTIVITY AND PROFITABILITY

Independent hose temperatures control and auto pressure balancing optimizes your productivity for a consistent high yield with less excess waste. Enjoy lower start-up costs thanks to a smaller generator and compressor.

ADVANCED CONTROL AND REPORTING FOR PRECISION AND EFFICIENCY

Utilize Reactor Connect and Job log tracking for advanced control and accurate record keeping. Simple automation I/O ensures consistent, high-quality output essential for industrial and OEM applications.



GRACO-ONLY SOLUTIONS THAT KEEP YOU SPRAYING



THE ONLY FULLY-CONNECTED DRUM TO GUN SYSTEM

- Maximize your benefits and protection with application intelligence
- Help provide professional results for first time sprayers
- Stay on ratio and improve yield with system intelligence



MAXIMIZE PRODUCTIVITY WITH REMOTE CONTROL AND MONITORING

- Remotely control your machine with the Reactor Connect app
- Easy monitoring and troubleshooting with real-time fleet dashboards
- Streamline your business with job reports and data analytics



QUICK CHANGEOVERS TO FINISH JOBS FASTER

- Quickly switch your pump between drums
- Easily move your pump in low ceiling height rigs
- Makes pump rebuilds fast and easy



EXCLUSIVE ELECTRIC TRANSFER PUMP TECHNOLOGY

- Communicates with the Reactor for improved ratio assurance and yield
- Automatically shuts down when you run out of material
- Monitors inlet pressures and self-adjusts to optimize material feed
- Quiet operation



STRONGER, FASTER TO HEAT, LIGHTER HEATED HOSE DESIGN

- Improved pressure balancing and yield with independent A and B temperature control
- Longer life and improved reliability with new robust hose construction
- Internally or externally heated options to meet all your needs



FROM START TO FINISH, THE WORLD'S MOST ADVANCED SPRAY FOAM AND POLYUREA SYSTEM

The fully-connected Graco Reactor 3 system is your partner in the field. With connectivity from drum to gun, you can precisely control heat, pressure and material flow for spray applications.



CORE CORE TRANSFER PUMPS PATENTED

Designed to optimize material supplied and minimize downtime. Quieter than your typical pneumatic pumps, while also able to communicate with the Reactor 3 to create a fully-connected system.

Picture shown represents an Elite model system. Standard and Pro models can upgrade hardware to activate Katalyst System Intelligence.

Reactor3

REACTOR 3 PROPORTIONER PATENTED

Designed to run quietly and efficiently, the Reactor 3 Electric Proportioner communicates with the entire system to simplify operations, improve performance and reduce maintenance.

ReactorConnect

REACTOR CONNECT PATENTED

Control your system with Reactor Connect and be more productive. Access your Reactor right from the gun. Monitor and adjust your proportioner and keep right on spraying. No hassles. That means you can get more done in your day, with less downtime and better yield.

Xcelerator

XCELERATOR HEATED HOSE PATENTED

Internally or externally heated hoses are independently temperature controlled. The internally heated hoses have 40% faster warm-up times and are 10% lighter than the traditional externally heated hose. Internally heated hoses are now available in 50 ft and 100 ft lengths to minimize weight and fluid connections.

THE ONLY FULLY-CONNECTED SYSTEM FROM DRUM TO GUN

Reactor 3 Elite model with Core Transfer Pumps are necessary to activate Katalyst System Intelligence.

FOR MORE INFORMATION, VISIT [GRACO.COM/REACTOR3](https://www.graco.com/reactor3)

REACTOR 3 ELECTRIC PROPORTIONER

The First Fully-Connected System From Drum to Gun

Upgrade your rig with a powerful Reactor 3 proportioner, built with advanced capabilities for spray foam and polyurea applications. Reactor 3 is designed to communicate with the entire system to simplify the operator's job, optimize spray parameters and maximize productivity.

ADVANCED ELECTRIC DESIGN

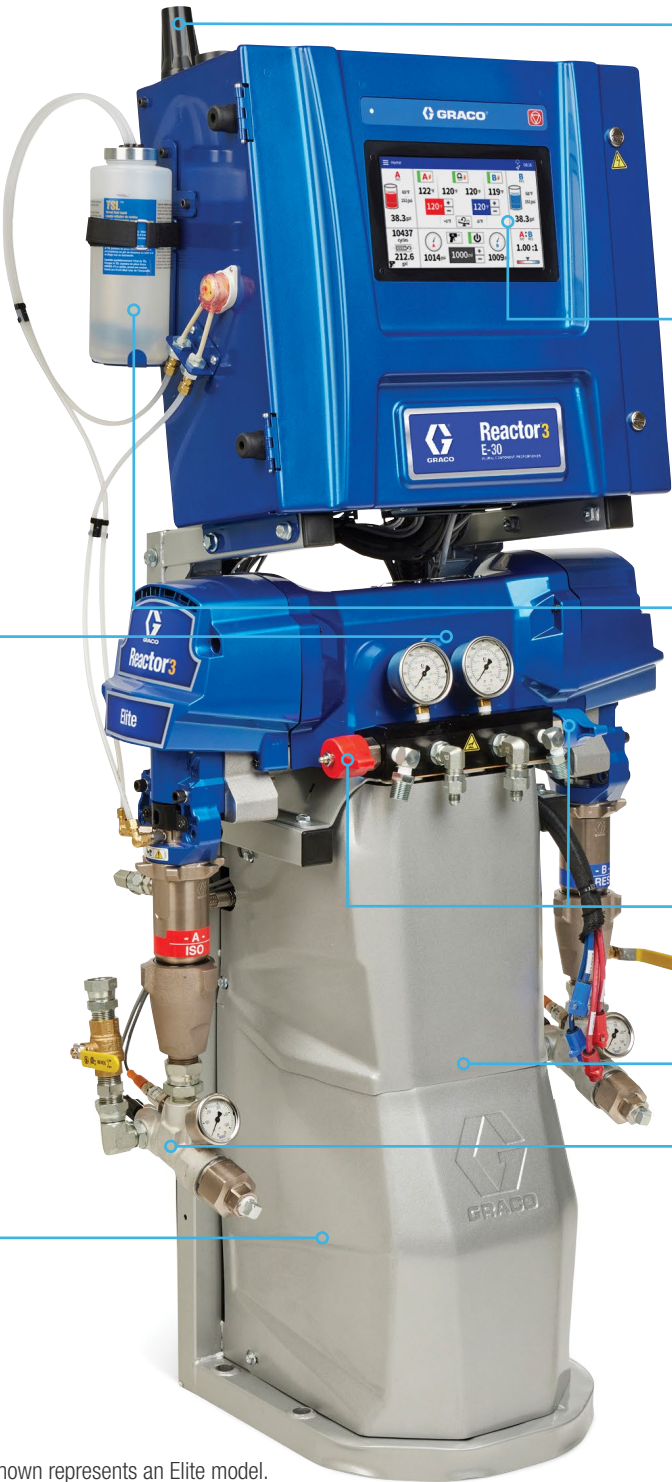
- Brushless motor for improved pressure/flow performance
- New temperature control boards for independent hose heat
- Voltage jumpers for easy changing between voltages
- Robust UL listed electrical hose connectors are color coded and keyed for error proof assembly
- Reactor 3 exclusive: connect with Tier 4 engines for ADM engine diagnostic

INDEPENDENT HOSE CONTROL

- Control A and B materials to different temperatures for improved pressure balancing
- Optimizes yield

REDUCED SIZE

- Reduced footprint provides additional room in your rig
- Compact design protects the flow meters and hose connections from being damaged in your rig



Picture shown represents an Elite model.

REACTOR CONNECT

- Real-time dashboard and reports via cellular connectivity
- Improved cellular antenna
- GPS antenna
- GPS location available in Reactor Connect
- Job naming and reporting

TOUCHSCREEN ADVANCED DISPLAY MODULE (ADM)

- Large new touchscreen interface
- Intuitive operation and navigation
- All spray operations from one screen

ISO LUBE PUMP

- Active ISO Lube system with peristaltic pump
- Automatic timed circulation improves TSL Life
- Reduced maintenance (No check valves)
- Larger easy-to-change ISO lube bottle

FLUID MANIFOLD

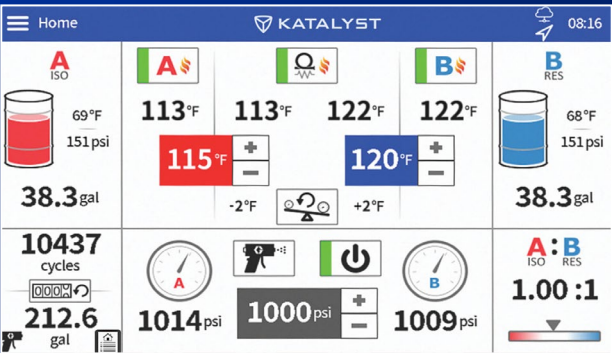
- Redesigned with side-mounted fluid valves for easier turning and improved control

OVAL GEAR FLOW METERS (under shroud)

- Verifies fluid ratio
- Provides real-time ratio data: displayed on the ADM and Reactor Connect
- Accurate for a wide range of fluid viscosities

INLET FILTERS

- Easy-to-maintain design
- 2X larger filter area
- Separate temperature and pressure sensors for more accurate temperature readings



ADVANCED SOFTWARE FEATURES

Available on Electric and Hydraulic Reactor 3 Models

- **Katalyst:** Reactor Intelligence from drum-to-gun. System communication and control that improves performance, ratio and yield. (Requires Elite Reactor paired with Core pumps)
- **Auto Pressure Balance:** Reactor automatically adjusts temperatures to optimize fluid pressures and maximize yield (Pro and Elite Series only)
- **Supply Pump Shutdown:** Automatically shuts down when you run out of material. Prevents air from entering the system that can cause off-ratio issues. (Requires Core pumps)
- **Smart Supply:** Automatically monitors and adjusts fluid inlet pressures to compensate for high viscosity (e.g., cold) materials to keep you spraying on ratio (Requires Elite Reactor paired with Core pumps)
- **Resistance Control Mode:** Accurately monitors and controls hose temperatures without the hassles of fluid sensors and RTD cables
- **Power Management:** Select desired heater wattage for reduced power consumption (Pro and Elite Series only)
- **Cellular Software Updates:** Automatically stay up to date with the latest Reactor software (Requires Reactor Connect)
- **Jog Countdown Timer:** Input a cycle count value and have the machine run and shut off after that exact value to assist in precisely flushing the system
- **Job Name Tracking:** Input a Job Name for summarized job reporting. Reactor Connect Job reports allow you to track spray data for a job spanning multiple days and sprayed with multiple machines.
- **Smart Control:** Software that monitors inlet pressure and makes adjustments to the motor speed of the Reactor to attempt to prevent off-ratio dispensing, especially in scenarios of high volume output and small pneumatic feed pumps. (Elite Electric Series only)

| PROPORTIONER | SPRAY FOAM OPTIONS | | | | | | POLYUREA OPTIONS | | | | | |
|-----------------|--------------------|--------------------|-------------------|--------------------|--------------------|------------------|--------------------|------------------|--------------------|------------------|--------------------|------------------|
| | STANDARD | | PRO | | ELITE | | STANDARD | | PRO | | ELITE | |
| MODEL | E-20 | E-30 | E-20 | E-30 | E-20 | E-30 | E-XP1 | E-XP2 | E-XP1 | E-XP2 | E-XP1 | E-XP2 |
| MOTOR | 1.8 HP Brushless | 2.5 HP Brushless | 1.8 HP Brushless | 2.5 HP Brushless | 1.8 HP Brushless | 2.5 HP Brushless | 1.8 HP Brushless | 2.5 HP Brushless | 1.8 HP Brushless | 2.5 HP Brushless | 1.8 HP Brushless | 2.5 HP Brushless |
| MAX FLOW | 2 GPM | 3 GPM | 2 GPM | 3 GPM | 2 GPM | 3 GPM | 1.5 GPM | 2 GPM | 1.5 GPM | 2 GPM | 1.5 GPM | 2 GPM |
| MAX PRESSURE | 2000 psi | 2000 psi | 2000 psi | 2000 psi | 2000 psi | 2000 psi | 3000 psi | 3500 psi | 3000 psi | 3500 psi | 3000 psi | 3500 psi |
| PRIMARY HEAT | 7 kW Single Block | 10 kW Single Block | 7 kW Single Block | 10 kW Single Block | 10 kW Single Block | 15 kW Dual Block | 10 kW Single Block | 15 kW Dual Block | 10 kW Single Block | 15 kW Dual Block | 10 kW Single Block | 15 kW Dual Block |
| MAX HOSE LENGTH | 220 ft | 320 ft | 220 ft | 320 ft | 220 ft | 320 ft | 220 ft | 320 ft | 220 ft | 320 ft | 220 ft | 320 ft |

NEW

REACTOR 3 HYDRAULIC PROPORTIONER

The Reactor 3 hydraulic proportioners from Graco builds on the robust legacy and performance of hydraulic Reactors, now incorporating advanced features from the electric Reactor 3 platform. Designed for construction applications, including roofing, residential and commercial projects, as well as for in-plant OEM applications, it offers unmatched performance, durability and profitability.

FLUID MANIFOLD

- Redesigned with side-mounted fluid valves for easier turning and improved control

OVAL GEAR FLOW METERS

- Verifies fluid ratio
- Provides real-time ratio data: displayed on the ADM and Reactor Connect
- Accurate for a wide range of fluid viscosities

HORIZONTAL PUMP LINE

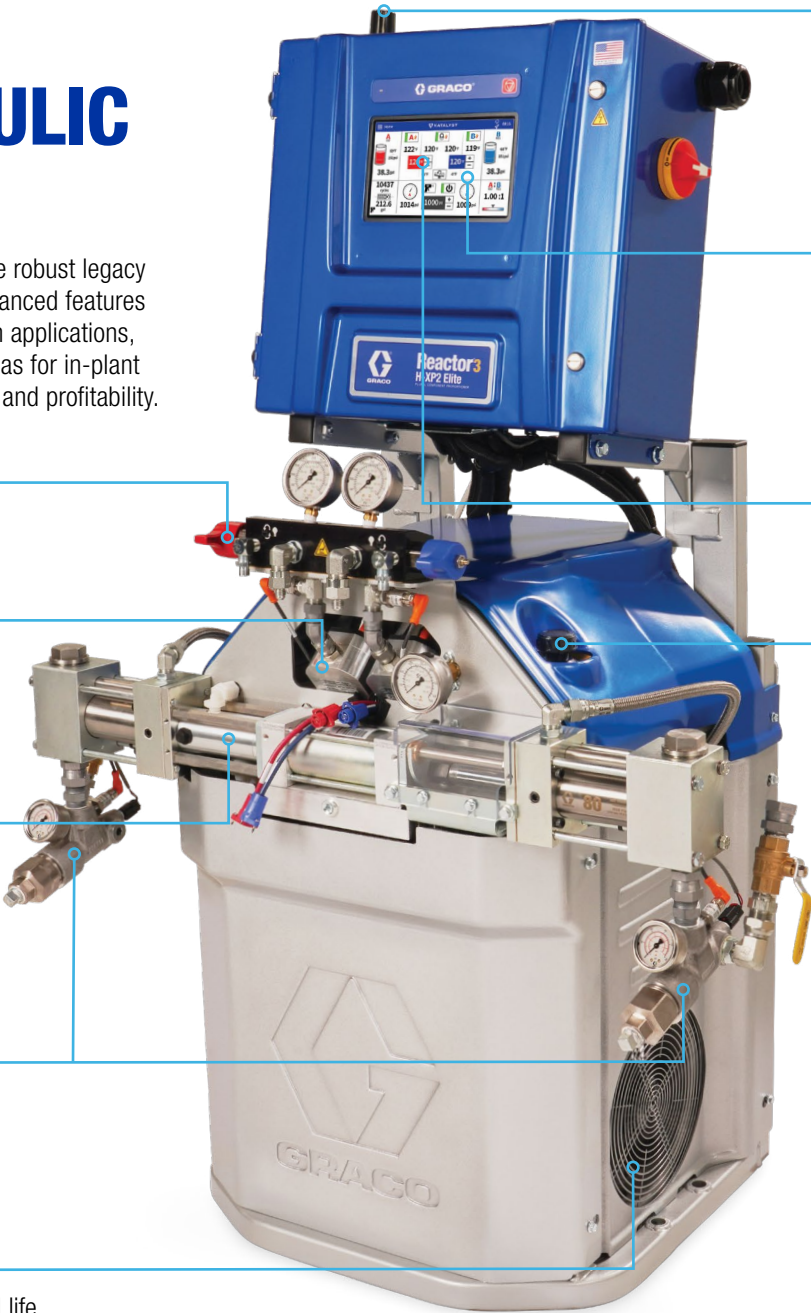
- Positive displacement pumps
- Easy service
- Long life
- Smooth changeovers and spray pattern
- Multiple pump sizes for non 1:1 dispensing

INLET FILTERS

- Easy-to-maintain design
- 2X larger filter area
- Separate temperature and pressure sensors for more accurate temperature readings

NEW HYDRAULIC COOLING SYSTEM

- Powerful fan to maintain optimal oil temperature for longer oil life



REACTOR CONNECT

- Real-time dashboard and reports via cellular connectivity
- Improved cellular antenna
- GPS antenna
- GPS location available in Reactor Connect
- Job naming and reporting

TOUCHSCREEN ADVANCED DISPLAY MODULE (ADM)

- Large new touchscreen interface
- Intuitive operation and navigation
- All spray operations from one screen
- **NEW** Electronic pressure control (Elite models)

INDEPENDENT HOSE CONTROL

- Control A and B materials to different temperatures for improved pressure balancing and optimized yield

NEW EASY-ACCESS OIL MAINTENANCE POINTS

- Easy-to-access oil dip stick and oil drain valve simplifies preventive maintenance



ISO LUBE PUMP

- New larger easy-to-change ISO lube bottle

NEW DIRECT DRIVE HYDRAULIC PUMP

- Simplified robust design eliminates fly wheel and belt system for reduced maintenance
- Smaller compact footprint
- Reduced noise
- Increased pressure/flow performance

NEW COMPACT FOOTPRINT FRAME DESIGN

- Reduced footprint provides additional room in your rig
- Compact design protects flow meters and hose connections from being damaged

| Job | | | | 00:07 |
|-------------------------------------------------|----------|----------------------|-----|---------|
| Enable Job: <input checked="" type="checkbox"/> | | 20500 David Koch Ave | | New Job |
| Job Name | Date | 1234 | gal | |
| 20500 David Koch Ave | 12/20/24 | 101 | 2.1 | ⬆ |
| 12655 W French Lake Rd | 12/20/24 | 17 | 0.3 | |
| 1201 Lund Blvd | 12/19/24 | 18 | 0.4 | |
| 88 11th Ave NE | 12/19/24 | 62 | 1.3 | |
| 20500 David Koch Ave | 12/19/24 | 12 | 0.2 | |

NEW JOB LOG TRACKING

Available on Electric and Hydraulic Reactor 3 Models

- Save a Job Name with your Reactor data
- When "Job Log" is enabled, the user will be prompted to use the last Job Name or add a new Job Name
- Reactor Connect Job Reports available
- Reports can combine job data even if job was sprayed on different days and with different Reactors

| Gateway | | | 07:16 |
|---------------------------|--------|------------------------------------------|-------|
| Digital Input/Output 1-2: | Output | Disabled | |
| Digital Input/Output 1-2: | Output | Disabled | |
| Digital Input/Output 1-2: | Output | Active Alarm | |
| Digital Input/Output 1-2: | Output | Active Advisory/Deviation | |
| Digital Input/Output 1-2: | Output | No Errors | |
| Digital Input/Output 1-2: | Output | No Alarms | |
| Digital Input/Output 1-2: | Output | Motor On, No Alarms | |
| Digital Input/Output 1-2: | Output | Motor On, All Heat On, No Alarms | |
| Digital Input/Output 1-2: | Output | Motor On, All Heat at Targets, No Alarms | |

NEW GATEWAY FOR OEM APPLICATIONS

Available on Electric and Hydraulic Reactor 3 Models

- Basic communication for electric and hydraulic R3 systems
- 4 selectable input and output (I/O) options available for PLC or robot applications

Output options:

- Active Alarm
- Active Advisory/Deviation
- No Errors
- No Alarms
- Motor On, No Alarms
- Motor On, All Heat On, No Alarms
- Motor On, All Heat at Targets, No Alarms

Input Options:

- Power On, Motor On, All Heat On
- Power On, Motor Off, All Heat Off
- Power On, Motor Off, All Heat On

Pictures shown represents an Elite model.

| PROPORTIONER | SPRAY FOAM OPTIONS | | | | POLYUREA OPTIONS | | | |
|------------------|------------------------------|--------------------|------------------------------|--------------------|------------------------------|--------------------|------------------------------|--------------------|
| | PRO | | ELITE | | PRO | | ELITE | |
| MODEL | H-30 | H-50 | H-30 | H-50 | H-XP2 | H-XP3 | H-XP2 | H-XP3 |
| MOTOR HORSEPOWER | 4 HP | 7.5 HP | 4 HP | 7.5 HP | 4 HP | 7.5 HP | 4 HP | 7.5 HP |
| ELECTRICAL SPECS | 230V-1PH, 230V-3PH, 400V-3PH | 230V-3PH, 400V-3PH | 230V-1PH, 230V-3PH, 400V-3PH | 230V-3PH, 400V-3PH | 230V-1PH, 230V-3PH, 400V-3PH | 230V-3PH, 400V-3PH | 230V-1PH, 230V-3PH, 400V-3PH | 230V-3PH, 400V-3PH |
| MAX FLOW | 30 LBS/MIN | 54 LBS/MIN | 30 LBS/MIN | 54 LBS/MIN | 1.8 GPM | 3 GPM | 1.8 GPM | 3 GPM |
| MAX PRESSURE | 2000 psi | 2000 psi | 2000 psi | 2000 psi | 3500 psi | 3500 psi | 3500 psi | 3500 psi |
| PRIMARY HEAT | 15 kW Dual Block | 20 kW Dual Block | 15 kW Dual Block | 20 kW Dual Block | 15 kW Dual Block | 20 kW Dual Block | 15 kW Dual Block | 20 kW Dual Block |
| PUMP SIZE | 140 cc | 140 cc | 140 cc | 140 cc | 80 cc | 80 cc | 80 cc | 80 cc |
| MAX HOSE LENGTH | 320 ft | 420 ft | 320 ft | 420 ft | 320 ft | 420 ft | 320 ft | 420 ft |

WHICH SYSTEM IS RIGHT FOR YOU?

Easy to Upgrade. Add Elite Features Later as Your Business Grows.

Purchase the Reactor 3 system that makes sense for your business now and add features along the way. The Reactor 3 line allows you to start with a Standard or Pro and upgrade to Elite capabilities at any time.

CHOOSE THE REACTOR 3 MODEL THAT BEST FITS YOU

Standard



Pro



Elite



- Touch Screen ADM
Brushless Motor (Electric only)
Active ISO Lube Pump (Electric only)
Data Download (with USB)
Small Recirculation Valves
Simple Y-strainers
- Software:**
- Independent A & B Hose Heat
 - Resistance Control Mode



- All the features of Standard PLUS...**
- Larger Heater Options
 - Large Easy-Access Inlet Filters
 - Reactor Connect Cell Module
 - Large Recirculation Valves
 - Drum-Level Dipsticks
- Software:**
- Auto Pressure Balance
 - Power Management
 - Automatic Cellular Software Updates



- All the features of Pro PLUS...**
- Katalyst Full System Control
 - Ratio Assurance
 - Inlet Temperature & Pressure Sensors
 - Generator Dashboard
 - Optimized for Core Transfer Pumps
 - Electronic Pressure Control (Hydraulic only)
- Software:**
- Smart Control (Electric only)
 - Smart Supply

WHAT'S INCLUDED IN EACH PACKAGE:

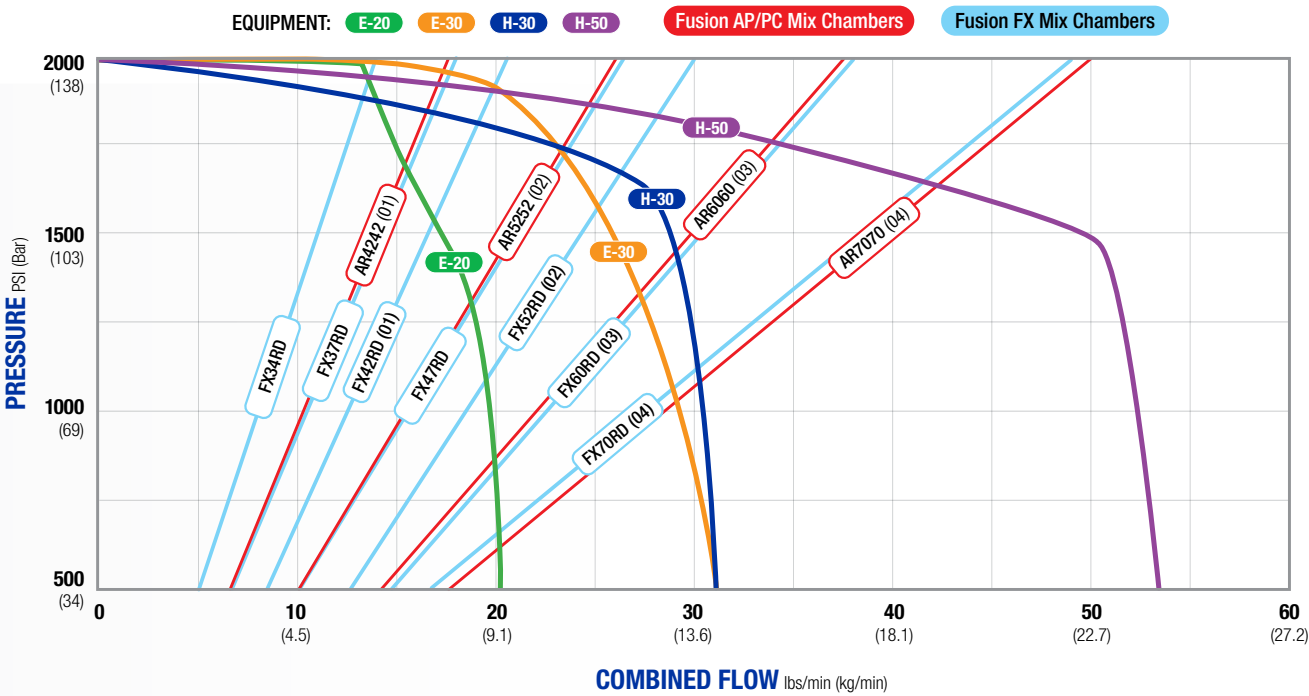
| PACKAGE OPTIONS | STANDARD | PRO | ELITE |
|-----------------------------------------------------------------------------------|------------------------------------------------------------------|------------------------------------------------------------------|------------------------------------------------------------------|
| EXTERNALLY HEATED HOSE (EH) PACKAGES AVAILABLE | Yes | Yes | Yes |
| INTERNALLY HEATED HOSE (IH) PACKAGES AVAILABLE | Yes | Yes | Yes |
| WHIP HOSE LENGTH INCLUDED IN PACKAGES | 10 ft Whip in EH packages, 20 ft Whip in IH packages | 10 ft Whip in EH packages, 20 ft Whip in IH packages | 20 ft Whip |
| ITEMS INCLUDED IN SINGLE HOSE PACKAGE | Reactor, Whip Hose, 1 - 50 ft Hose | Reactor, Whip Hose, 1 - 50 ft Hose | Reactor, Whip Hose, 1 - 50 ft Hose |
| ITEMS INCLUDED IN MULTI-HOSE PACKAGES E-20, E-30, E-XP1, E-XP2, H-30 AND H-XP2 | Reactor, Whip Hose, 2 - 100 ft IH Hoses 4 - 50 ft EH Hoses | Reactor, Whip Hose, 2 - 100 ft IH Hoses 4 - 50 ft EH Hoses | Reactor, Whip Hose, 2 - 100 ft IH Hoses 4 - 50 ft EH Hoses |
| ITEMS INCLUDED IN MULTI-HOSE PACKAGES H-50 AND H-XP3 | N/A | Reactor, Whip Hose, 3 - 100 ft IH Hoses 6 - 50 ft EH Hoses | Reactor, Whip Hose, 3 - 100 ft IH Hoses 6 - 50 ft EH Hoses |

SELECT YOUR PERFORMANCE LEVEL

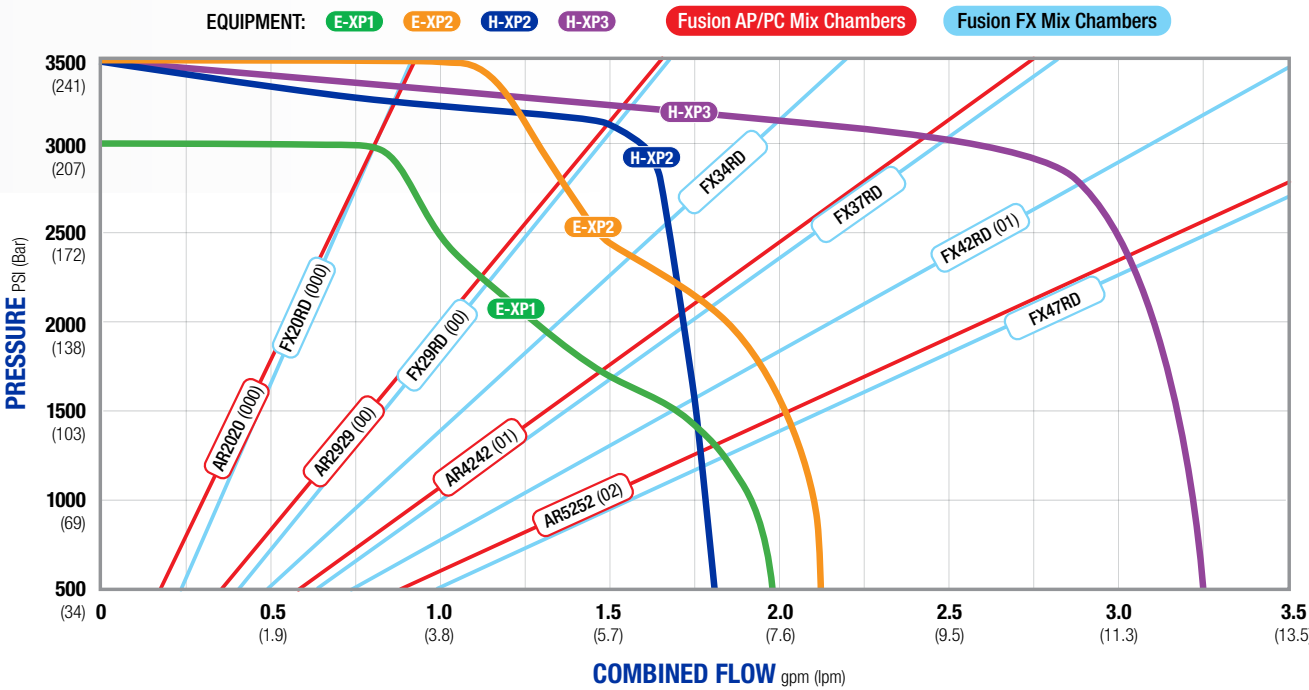
Every Business Need is Different

Reactor 3 has a performance point to meet every business need. Whether you are just starting your business and want a reliable machine at a reasonable price or are an established business looking to expand your capabilities and improve your productivity, we have a machine that will meet your needs.

SPRAY FOAM FLOW CHART



POLYUREA FLOW CHART



TOUCHSCREEN CONTROL

Easier to Control and Access Information

The new larger interface provides simple touchscreen operations and makes the Reactor easy to operate. All the necessary spray information and control is on one screen, making it intuitive and easy to understand. New setup menus offer more controls than ever for owners and managers to optimize the machine for their business needs.

Independent Hose Temperatures

- Hose temperatures will follow the A and B material set points to help optimize your spray pattern and maximize material yield

Inlet Material Intelligence

- Quickly see temperature, pressure and volume of A and B material remaining

A and B Fluid Temperature Set Points

- Simplified operations with only two temperature set points
- With independently heated hoses, the A and B materials are heated to your exact A and B temperature setpoints

Ratio Assurance

- When equipped with flow meters, view real-time ratio performance

Job Log

- Shortcut to Job Log screen
- User can save Job name with Reactor data

System Modes

- Quickly change between Spray, Jog and Park modes with the touch of a button

Auto Pressure Balance

- The Reactor will automatically adjust temperatures to optimize fluid pressures and maximize yield

*Picture shown represents an Elite model.

GRACO EXPERTS BY YOUR SIDE

Experienced graco technicians can access your Reactor system and troubleshoot issues for you remotely

REACTOR CONNECT

Remote Monitoring is Always Within Reach

Reactor Connect is designed for both Sprayers and Owners/Managers alike. Use Reactor Connect to track ratios, receive alerts and view data directly from your smartphone. As a result, owners/managers can monitor rigs, access reports, troubleshoot issues from anywhere and get the crew back to work quickly.



REACTOR CONTROL SCREEN – Reactor Connect App

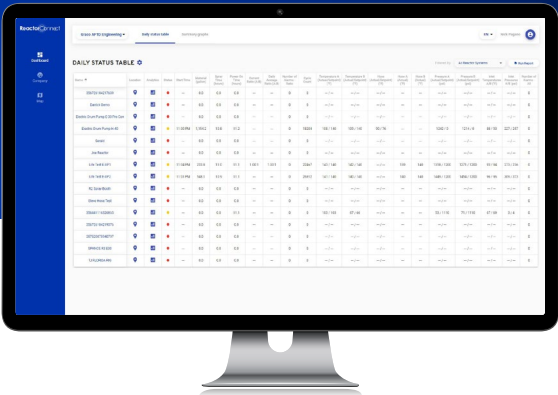
- Adjust temperature and pressure points
- View drum levels
- Turn heat zones on/off
- View and reset cycle counter/material usage
- Turn system on/off
- Turn pump on/off
- Toggle between Spray, Park and Jog modes
- View ratio

MULTI-SYSTEM DASHBOARD – Reactor Connect App

- Current Reactor status
- Daily "power on" time
- Daily "spray" time
- Daily material usage

ONLINE INTERFACE – Reactor Connect Website

- Create user accounts, company profiles and users
- Assign Reactors to your accounts
- Advanced Reactor analytics
- Control access
- GPS location maps
- Automated summary reports
- Customized reporting



ADD YOUR DISTRIBUTOR FOR FURTHER HELP

Reactor Analytics is a great tool for analyzing machine performance and quickly diagnosing possible issues. Add your Graco equipment distributor to your Reactor Connect company so they can offer assistance.

KATALYST CONTROL FOR REACTOR 3

Helps Eliminate the Largest Causes of Off-Ratio Issues

Katalyst, the new Reactor 3 software, provides the highest level system intelligence to optimize spray, eliminate ratio issues, improve yield, to help deliver quality results every time.



HOW TO ACTIVATE KATALYST: Set-up is Simple

- 1 Install Core transfer pumps on your new Reactor 3 Elite proportioner
- 2 Turn on the machine and acknowledge “Electric Transfer Pumps” when prompted. That’s it...your Katalyst software is enabled

IMPROVE YOUR MATERIAL YIELD USING KATALYST

Even a 5% yield improvement can mean big savings for your business. Calculate your own savings using the calculator below:

| | |
|-------------------------------------------------------------------|----------|
| MATERIAL COST PER SET | \$2500 |
| SETS PER YEAR | 250 |
| EST. YIELD IMPROVEMENT | 5% |
| ANNUAL SAVINGS: (Cost/set) x (Sets/year) x (Yield Improvement) | \$31,250 |

*Individual yield improvement may vary.

ACTIVATE KATALYST FOR TOTAL SYSTEM INTELLIGENCE

The Katalyst software ensures your system is operating using the most advanced features available so even first-time sprayers can achieve professional results.

KATALYST PROVIDES FULL COMMUNICATION AND CONTROL

- Communication with the Core pumps nearly eliminates two of the largest causes of off-ratio spraying
 - **Air in the fluid stream:** With Katalyst the system will automatically shut you down when run out of material so air does not enter into the fluid stream
 - **Improperly feeding the Reactor with material:** Katalyst automatically adjusts power to the pumps to always provide optimal material feed to the Reactor. e.g., helping to eliminate feed issues with cold materials
- Communication with Xcelerator heated hoses allows for independent A and B hose heat adjustments and the option of automatic pressure balancing for improved yield



* Standard and Pro models can upgrade hardware to activate Katalyst System Intelligence.

CORE ELECTRIC TRANSFER PUMPS

Powerful, Quiet, Smart

Graco's revolutionary Core electric transfer pumps are designed to optimize material supply and minimize downtime. Quieter and less expensive to operate than traditional pneumatic pumps, the new electric pumps can communicate with the Reactor 3 to give you a fully-connected system. Reducing air consumption in your spray rig with electric feed pumps will allow downsizing the compressor, reducing weight, footprint and maintenance cost.



NEW SUPPLY PUMP SHUTDOWN

Senses when a drum is empty and automatically shuts down the transfer pumps and Reactor 3 proportioner before damage occurs, including air entering the system and that can compromise ratio.

SMART SUPPLY

The software automatically monitors and adjusts Reactor 3 proportioner inlet pressures to optimize material feed and on-ratio performance. Maintains inlet pressure between 80 – 200 psi — boosting power to the transfer pump's electric motors when needed. Achieve Smart Supply when using Core pumps with a Reactor 3 Elite model.



PATENT PENDING

With our exclusive ProConnect technology, you can quickly disconnect the motor from the pump lower and easily transfer the pump from drum to drum... even in low ceiling height rigs. Paying for taller rigs or having to tip the drum to remove the pump is no longer necessary.

TIP: Have an extra pump lower installed on your rig to make changing drums even faster and cleaner.

CONNECTIONS MADE EASY!

Connecting your motor to the lower just got as easy as 1, 2, 3.



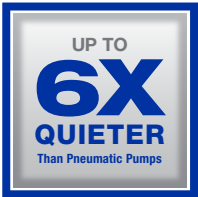
1. Loosen T-handle



2. Open Pump Clamp



3. Slide Electric Motor to Remove



That's equivalent to reducing the sound in your rig from being as loud as a motorcycle to that of a car.

XCELERATOR HEATED HOSES

Faster to Heat, Lighter Weight, Improved Flexibility

Graco's Xcelerator heated hoses provide more options and control than ever. All Xcelerator hoses are designed to provide full independent A and B temperature control. This provides more precise pressure balancing and improved material yield. New robust construction provides longer life and reduced maintenance.

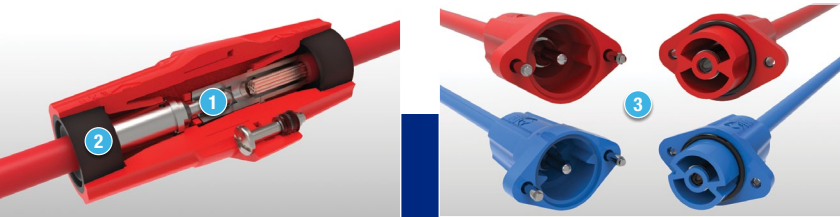


PATENTED

HOSE CONNECTIONS THAT ARE LIGHTWEIGHT AND ROBUST

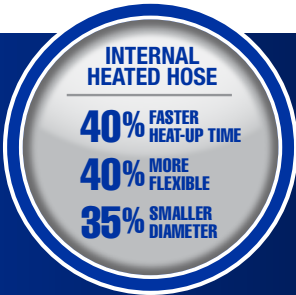
Graco's new electrical connectors are designed with the user in mind

- 1 Pin and Socket Connectors**
 - Male/Female connectors provide a strong, reliable electric connection
- 2 Gasket and O-Ring Seal**
 - Provides moisture-proof electrical connection
- 3 Keyed Feature**
 - Unique keys on A and B connectors prevent incorrect connections



DESIGNED FOR SPEED AND RELIABILITY

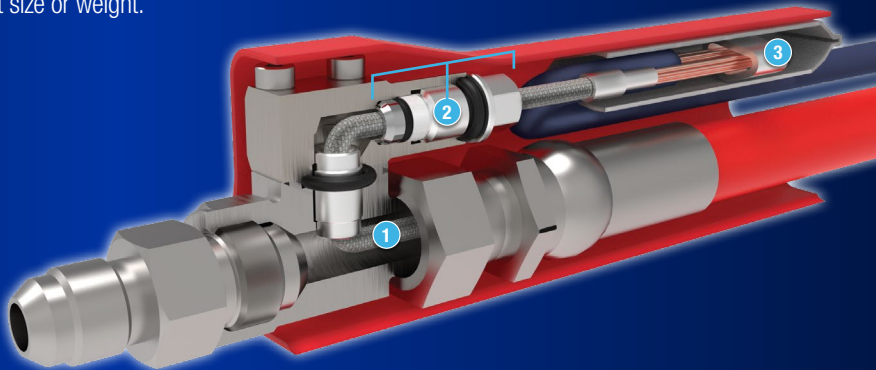
- Fully-independent A and B temperature control
- Internally heated and externally heated options
- Internally heated hoses available in both 50 ft and 100 ft lengths: Minimizes fluid and electrical connections
- Optimized for Resistance Control Mode: Reduces maintenance and issues with no cables or sensors required



GRACO'S INTERNAL HEATED HOSE HAS THE SMALLEST, LIGHTEST WEIGHT CONNECTIONS IN THE INDUSTRY

The robust, compact design allows the heating element to enter/exit the fluid stream at each hose joint without adding significant size or weight.

- 1 Heating Wire**
 - Heating wire is located in hose ID for direct material contact and quick heating
- 2 Wire Seal Nut/Ferrule/O-ring/Bushing**
 - These components allow the heating wire to transition out of fluid and provide a proper seal
- 3 Crimp Connector**
 - Connects the heating wire to the multi-strand wire that allows the hose power to connect between hose joints





ESR310 Shown

Standard – Spray Foam Proportioners & Packages

REACTOR 3 E-20

| | |
|---------------|-----------------------------------------------------|
| 26R310 | Reactor 3, E-20, Standard, 7kW Heat |
| ESR310 | Package: 50 ft ext heated hose, 10 ft whip |
| EHR310 | Package: 50 ft ext heated hose (qty 4), 10 ft whip |
| ISR310 | Package: 50 ft int heated hose, 20 ft whip |
| IHR310 | Package: 100 ft int heated hose (qty 2), 20 ft whip |

REACTOR 3 E-30

| | |
|---------------|-----------------------------------------------------|
| 26R330 | Reactor 3, E-30, Standard, 10kW Heat |
| ESR330 | Package: 50 ft ext heated hose, 10 ft whip |
| EHR330 | Package: 50 ft ext heated hose (qty 4), 10 ft whip |
| ISR330 | Package: 50 ft int heated hose, 20 ft whip |
| IHR330 | Package: 100 ft int heated hose (qty 2), 20 ft whip |



ESR311 Shown

Pro – Spray Foam Proportioners & Packages

REACTOR 3 E-20

| | |
|---------------|-----------------------------------------------------|
| 26R311 | Reactor 3, E-20, Pro, 7kW Heat |
| ESR311 | Package: 50 ft ext heated hose, 10 ft whip |
| EHR311 | Package: 50 ft ext heated hose (qty 4), 10 ft whip |
| ISR311 | Package: 50 ft int heated hose, 20 ft whip |
| IHR311 | Package: 100 ft int heated hose (qty 2), 20 ft whip |

| | |
|---------------|-----------------------------------------------------|
| 26R313 | Reactor 3, E-20, Pro, 10kW Heat |
| ESR313 | Package: 50 ft ext heated hose, 10 ft whip |
| EHR313 | Package: 50 ft ext heated hose (qty 4), 10 ft whip |
| ISR313 | Package: 50 ft int heated hose, 20 ft whip |
| IHR313 | Package: 100 ft int heated hose (qty 2), 20 ft whip |

REACTOR 3 E-30

| | |
|---------------|-----------------------------------------------------|
| 26R331 | Reactor 3, E-30, Pro, 10kW Heat |
| ESR331 | Package: 50 ft ext heated hose, 10 ft whip |
| EHR331 | Package: 50 ft ext heated hose (qty 4), 10 ft whip |
| ISR331 | Package: 50 ft int heated hose, 20 ft whip |
| IHR331 | Package: 100 ft int heated hose (qty 2), 20 ft whip |

| | |
|---------------|-----------------------------------------------------|
| 26R333 | Reactor 3, E-30, Pro, 15kW Heat |
| ESR333 | Package: 50 ft ext heated hose, 10 ft whip |
| EHR333 | Package: 50 ft ext heated hose (qty 4), 10 ft whip |
| ISR333 | Package: 50 ft int heated hose, 20 ft whip |
| IHR333 | Package: 100 ft int heated hose (qty 2), 20 ft whip |



ESR312 Shown

Elite – Spray Foam Proportioners & Packages

REACTOR 3 E-20

| | |
|---------------|-------------------------------------------------------------------|
| 26R312 | Reactor 3, E-20, Elite, 10kW Heat |
| ESR312 | Package: 50 ft ext heated hose, 20 ft whip, engine cable |
| EHR312 | Package: 50 ft ext heated hose (qty 4), 20 ft whip, engine cable |
| ISR312 | Package: 50 ft int heated hose, 20 ft whip, engine cable |
| IHR312 | Package: 100 ft int heated hose (qty 2), 20 ft whip, engine cable |

REACTOR 3 E-30

| | |
|---------------|-------------------------------------------------------------------|
| 26R332 | Reactor 3, E-30, Elite, 15kW Heat |
| ESR332 | Package: 50 ft ext heated hose, 20 ft whip, engine cable |
| EHR332 | Package: 50 ft ext heated hose (qty 4), 20 ft whip, engine cable |
| ISR332 | Package: 50 ft int heated hose, 20 ft whip, engine cable |
| IHR332 | Package: 100 ft int heated hose (qty 2), 20 ft whip, engine cable |

Complete Elite Packages:

Complete packages include Reactor Elite proportioner, Internally Heated Hoses and Core Pumps

REACTOR 3 E-20

| | |
|--------|------------------------------------------------------------------------------------------------------|
| CSR312 | Package: Reactor E-20 Elite, 50 ft int heated hose, 20 ft whip, engine cable, Core pump kit |
| CHR312 | Package: Reactor E-20 Elite, 100 ft int heated hose (qty 2), 20 ft whip, engine cable, Core pump kit |

REACTOR 3 E-30

| | |
|--------|------------------------------------------------------------------------------------------------------|
| CSR332 | Package: Reactor E-30 Elite, 50 ft int heated hose, 20 ft whip, engine cable, Core pump kit |
| CHR332 | Package: Reactor E-30 Elite, 100 ft int heated hose (qty 2), 20 ft whip, engine cable, Core pump kit |



ESR355 Shown

Pro – Spray Foam Proportioners & Packages

REACTOR 3 H-30

| | |
|---------------|-----------------------------------------------------|
| 27R355 | Reactor 3, H-30, Pro, 15kW Heat |
| ESR355 | Package: 50 ft ext heated hose, 10 ft whip |
| EHR355 | Package: 50 ft ext heated hose (qty 4), 10 ft whip |
| ISR355 | Package: 50 ft int heated hose, 20 ft whip |
| IHR355 | Package: 100 ft int heated hose (qty 2), 20 ft whip |

REACTOR 3 H-50

| | |
|---------------|-----------------------------------------------------|
| 27R375 | Reactor 3, H-50, Pro, 20kW Heat, 230V |
| ESR375 | Package: 50 ft ext heated hose, 10 ft whip |
| EHR375 | Package: 50 ft ext heated hose (qty 6), 10 ft whip |
| ISR375 | Package: 50 ft int heated hose, 20 ft whip |
| IHR375 | Package: 100 ft int heated hose (qty 3), 20 ft whip |

| | |
|---------------|-----------------------------------------------------|
| 27R376 | Reactor 3, H-50, Pro, 20kW Heat, 400V |
| ESR376 | Package: 50 ft ext heated hose, 10 ft whip |
| EHR376 | Package: 50 ft ext heated hose (qty 6), 10 ft whip |
| ISR376 | Package: 50 ft int heated hose, 20 ft whip |
| IHR376 | Package: 100 ft int heated hose (qty 3), 20 ft whip |



ESR357 Shown

Elite – Spray Foam Proportioners & Packages

REACTOR 3 H-30

| | |
|---------------|-----------------------------------------------------|
| 27R357 | Reactor 3, H-30, Elite, 15kW Heat |
| ESR357 | Package: 50 ft ext heated hose, 20 ft whip |
| EHR357 | Package: 50 ft ext heated hose (qty 4), 20 ft whip |
| ISR357 | Package: 50 ft int heated hose, 20 ft whip |
| IHR357 | Package: 100 ft int heated hose (qty 2), 20 ft whip |

REACTOR 3 H-50

| | |
|---------------|-----------------------------------------------------|
| 27R377 | Reactor 3, H-50, Elite, 20kW Heat, 230V |
| ESR377 | Package: 50 ft ext heated hose, 20 ft whip |
| EHR377 | Package: 50 ft ext heated hose (qty 6), 20 ft whip |
| ISR377 | Package: 50 ft int heated hose, 20 ft whip |
| IHR377 | Package: 100 ft int heated hose (qty 3), 20 ft whip |

| | |
|---------------|-----------------------------------------------------|
| 27R378 | Reactor 3, H-50, Elite, 20kW Heat, 400V |
| ESR378 | Package: 50 ft ext heated hose, 20 ft whip |
| EHR378 | Package: 50 ft ext heated hose (qty 6), 20 ft whip |
| ISR378 | Package: 50 ft int heated hose, 20 ft whip |
| IHR378 | Package: 100 ft int heated hose (qty 3), 20 ft whip |

Complete Elite Packages:

Complete packages include Reactor Elite proportioner, Internally Heated Hoses and Core Pumps

REACTOR 3 H-30

| | |
|--------|----------------------------------------------------------------------------------------|
| CSR357 | Package: Reactor H-30 Elite, 50 ft int heated hose, 20 ft whip, Core pump kit |
| CHR357 | Package: Reactor H-30 Elite, 100 ft int heated hose (qty 2), 20 ft whip, Core pump kit |

REACTOR 3 H-50

| | |
|--------|----------------------------------------------------------------------------------------------|
| CSR377 | Package: Reactor H-50 Elite, 230V, 50 ft int heated hose, 20 ft whip, Core pump kit |
| CHR377 | Package: Reactor H-50 Elite, 230V, 100 ft int heated hose (qty 3), 20 ft whip, Core pump kit |
| CSR378 | Package: Reactor H-50 Elite, 400V, 50 ft int heated hose, 20 ft whip, Core pump kit |
| CHR378 | Package: Reactor H-50 Elite, 400V, 100 ft int heated hose (qty 3), 20 ft whip, Core pump kit |



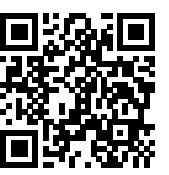
DON'T FORGET TO CHOOSE YOUR GUN SEPARATELY WHEN ORDERING YOUR REACTOR

Fusion® FX Gun — The Smallest, Lightest, Best Balanced Gun Ever Built

For more information on additional gun options, see Fusion FX brochure

FOR PART NUMBERS AND MORE DETAILS ON REACTOR 3 PROPORTIONERS:

Visit graco.com/reactor3 or ask your local authorized Graco distributor





ESR320 Shown

Standard – Polyurea Proportioners & Packages

REACTOR 3 E-XP1

| | |
|---------------|-----------------------------------------------------|
| 26R320 | Reactor 3, E-XP1, Standard, 10kW Heat |
| ESR320 | Package: 50 ft ext heated hose, 10 ft whip |
| EHR320 | Package: 50 ft ext heated hose (qty 4), 10 ft whip |
| ISR320 | Package: 50 ft int heated hose, 20 ft whip |
| IHR320 | Package: 100 ft int heated hose (qty 2), 20 ft whip |

REACTOR 3 E-XP2

| | |
|---------------|-----------------------------------------------------|
| 26R340 | Reactor 3, E-XP2, Standard, 15kW Heat |
| ESR340 | Package: 50 ft ext heated hose, 10 ft whip |
| EHR340 | Package: 50 ft ext heated hose (qty 4), 10 ft whip |
| ISR340 | Package: 50 ft int heated hose, 20 ft whip |
| IHR340 | Package: 100 ft int heated hose (qty 2), 20 ft whip |



ESR321 Shown

Pro – Polyurea Proportioners & Packages

REACTOR 3 E-XP1

| | |
|---------------|-----------------------------------------------------|
| 26R321 | Reactor 3, E-XP1, Pro, 10kW Heat |
| ESR321 | Package: 50 ft ext heated hose, 10 ft whip |
| EHR321 | Package: 50 ft ext heated hose (qty 4), 10 ft whip |
| ISR321 | Package: 50 ft int heated hose, 20 ft whip |
| IHR321 | Package: 100 ft int heated hose (qty 2), 20 ft whip |

REACTOR 3 E-XP2

| | |
|---------------|-----------------------------------------------------|
| 26R341 | Reactor 3, E-XP2, Pro, 15kW Heat |
| ESR341 | Package: 50 ft ext heated hose, 10 ft whip |
| EHR341 | Package: 50 ft ext heated hose (qty 4), 10 ft whip |
| ISR341 | Package: 50 ft int heated hose, 20 ft whip |
| IHR341 | Package: 100 ft int heated hose (qty 2), 20 ft whip |



ISR322 Shown

Elite – Polyurea Proportioners & Packages

REACTOR 3 E-XP1

| | |
|---------------|-------------------------------------------------------------------|
| 26R322 | Reactor 3, E-XP1, Elite, 10kW Heat |
| ESR322 | Package: 50 ft ext heated hose, 20 ft whip, engine cable |
| EHR322 | Package: 50 ft ext heated hose (qty 4), 20 ft whip, engine cable |
| ISR322 | Package: 50 ft int heated hose, 20 ft whip, engine cable |
| IHR322 | Package: 100 ft int heated hose (qty 2), 20 ft whip, engine cable |

REACTOR 3 E-XP2

| | |
|---------------|-------------------------------------------------------------------|
| 26R342 | Reactor 3, E-XP2, Elite, 15kW Heat |
| ESR342 | Package: 50 ft ext heated hose, 20 ft whip, engine cable |
| EHR342 | Package: 50 ft ext heated hose (qty 4), 20 ft whip, engine cable |
| ISR342 | Package: 50 ft int heated hose, 20 ft whip, engine cable |
| IHR342 | Package: 100 ft int heated hose (qty 2), 20 ft whip, engine cable |

Complete Elite Packages:

Complete packages include Reactor Elite proportioner, Internally Heated Hoses and Core Pumps

REACTOR 3 E-XP1

| | |
|--------|-------------------------------------------------------------------------------------------------------|
| CSR322 | Package: Reactor E-XP1 Elite, 50 ft int heated hose, 20 ft whip, engine cable, Core pump kit |
| CHR322 | Package: Reactor E-XP1 Elite, 100 ft int heated hose (qty 2), 20 ft whip, engine cable, Core pump kit |

REACTOR 3 E-XP2

| | |
|--------|-------------------------------------------------------------------------------------------------------|
| CSR342 | Package: Reactor E-XP2 Elite, 50 ft int heated hose, 20 ft whip, engine cable, Core pump kit |
| CHR342 | Package: Reactor E-XP2 Elite, 100 ft int heated hose (qty 2), 20 ft whip, engine cable, Core pump kit |



ESR365 Shown

Pro – Polyurea Proportioners & Packages

REACTOR 3 H-XP2

| | |
|---------------|-----------------------------------------------------|
| 27R365 | Reactor 3, H-XP2, Pro, 15kW Heat |
| ESR365 | Package: 50 ft ext heated hose, 10 ft whip |
| EHR365 | Package: 50 ft ext heated hose (qty 4), 10 ft whip |
| ISR365 | Package: 50 ft int heated hose, 20 ft whip |
| IHR365 | Package: 100 ft int heated hose (qty 2), 20 ft whip |

REACTOR 3 H-XP3

| | |
|---------------|-----------------------------------------------------|
| 27R385 | Reactor 3, H-XP3, Pro, 20kW Heat, 230V |
| ESR385 | Package: 50 ft ext heated hose, 10 ft whip |
| EHR385 | Package: 50 ft ext heated hose (qty 6), 10 ft whip |
| ISR385 | Package: 50 ft int heated hose, 20 ft whip |
| IHR385 | Package: 100 ft int heated hose (qty 3), 20 ft whip |

27R386 Reactor 3, H-XP3, Pro, 20kW Heat, 400V

| | |
|--------|-----------------------------------------------------|
| ESR386 | Package: 50 ft ext heated hose, 10 ft whip |
| EHR386 | Package: 50 ft ext heated hose (qty 6), 10 ft whip |
| ISR386 | Package: 50 ft int heated hose, 20 ft whip |
| IHR386 | Package: 100 ft int heated hose (qty 3), 20 ft whip |



ISR367 Shown

Elite – Polyurea Proportioners & Packages

REACTOR 3 H-XP2

| | |
|---------------|-----------------------------------------------------|
| 27R367 | Reactor 3, H-XP2, Elite, 15kW Heat |
| ESR367 | Package: 50 ft ext heated hose, 20 ft whip |
| EHR367 | Package: 50 ft ext heated hose (qty 4), 20 ft whip |
| ISR367 | Package: 50 ft int heated hose, 20 ft whip |
| IHR367 | Package: 100 ft int heated hose (qty 2), 20 ft whip |

REACTOR 3 H-XP3

| | |
|---------------|-----------------------------------------------------|
| 27R387 | Reactor 3, H-XP3, Elite, 20kW Heat, 230V |
| ESR387 | Package: 50 ft ext heated hose, 20 ft whip |
| EHR387 | Package: 50 ft ext heated hose (qty 6), 20 ft whip |
| ISR387 | Package: 50 ft int heated hose, 20 ft whip |
| IHR387 | Package: 100 ft int heated hose (qty 3), 20 ft whip |

27R378 Reactor 3, H-XP3, Elite, 20kW Heat, 400V

| | |
|--------|-----------------------------------------------------|
| ESR388 | Package: 50 ft ext heated hose, 20 ft whip |
| EHR388 | Package: 50 ft ext heated hose (qty 6), 20 ft whip |
| ISR388 | Package: 50 ft int heated hose, 20 ft whip |
| IHR388 | Package: 100 ft int heated hose (qty 3), 20 ft whip |

Complete Elite Packages:

Complete packages include Reactor Elite proportioner, Internally Heated Hoses and Core Pumps

REACTOR 3 H-XP2

| | |
|--------|-----------------------------------------------------------------------------------------|
| CSR367 | Package: Reactor H-XP2 Elite, 50 ft int heated hose, 20 ft whip, Core pump kit |
| CHR367 | Package: Reactor H-XP2 Elite, 100 ft int heated hose (qty 2), 20 ft whip, Core pump kit |

REACTOR 3 H-XP3

| | |
|--------|-----------------------------------------------------------------------------------------------|
| CSR387 | Package: Reactor H-XP3 Elite, 230V, 50 ft int heated hose, 20 ft whip, Core pump kit |
| CHR387 | Package: Reactor H-XP3 Elite, 230V, 100 ft int heated hose (qty 3), 20 ft whip, Core pump kit |
| CSR388 | Package: Reactor H-XP3 Elite, 400V, 50 ft int heated hose, 20 ft whip, Core pump kit |
| CHR388 | Package: Reactor H-XP3 Elite, 400V, 100 ft int heated hose (qty 3), 20 ft whip, Core pump kit |



graco.com/AddFusion



DON'T FORGET TO CHOOSE YOUR GUN
SEPARATELY WHEN ORDERING YOUR REACTOR

Fusion® PC Gun — A Perfect Rebuild in Seconds

For more information on additional gun options, see P&A brochure

FOR PART NUMBERS AND MORE DETAILS
ON REACTOR 3 PROPORTIONERS:

Visit graco.com/reactor3 or ask your local authorized Graco distributor



graco.com/reactor3



HOSE – SPRAY FOAM

| | |
|--------|-----------------------------------------------------------------------|
| 25P775 | Whip: LP, 10 ft, 2000 psi |
| 25P776 | Whip: LP, 20 ft, 2000 psi |
| 96B101 | Hose: 3/8 in, External, LP, 50 ft, Blue Mesh, 2000 psi |
| 96B125 | Hose: 3/8 in, External, LP, 50 ft, RTD, Blue Mesh, 2000 psi |
| 25P434 | Hose: 3/8 in, Internal, LP, 50 ft, Xtreme-Wrap™, 2000 psi |
| 25P435 | Hose: 3/8 in, Internal, LP, 100 ft, Xtreme-Wrap, 2000 psi |
| 25P437 | Hose: 3/8 in, Internal, LP, 50 ft, RTD, Xtreme Wrap, 2000 psi |
| 25P438 | Hose: 3/8 in, Internal, LP, 100 ft, RTD, Xtreme Wrap, 2000 psi |
| 96B102 | Hose: 1/2 in, External, LP, 50 ft, Blue Mesh, 2000 psi |
| 96B126 | Hose: 1/2 in, External, LP, 50 ft, RTD, Blue Mesh, 2000 psi |



HOSE – POLYUREA

| | |
|--------|-----------------------------------------------------------------------|
| 25P777 | Whip: HP, 10 ft, 3500 psi |
| 25P778 | Whip: HP, 20 ft, 3500 psi |
| 96B111 | Hose: 3/8 in, External, HP, 50 ft, Blue Mesh, 3500 psi |
| 96B145 | Hose: 3/8 in, External, HP, 50 ft, RTD, Blue Mesh, 3500 psi |
| 25P534 | Hose: 3/8 in, Internal, HP, 50 ft, Xtreme-Wrap, 3500 psi |
| 25P535 | Hose: 3/8 in, Internal, HP, 100 ft, Xtreme-Wrap, 3500 psi |
| 25P537 | Hose: 3/8 in, Internal, HP, 50 ft, RTD, Xtreme Wrap, 3500 psi |
| 25P538 | Hose: 3/8 in, Internal, HP, 100 ft, RTD, Xtreme Wrap, 3500 psi |
| 96B112 | Hose: 1/2 in, External, HP, 50 ft, Blue Mesh, 3500 psi |
| 96B146 | Hose: 1/2 in, External, HP, 50 ft, RTD, Blue Mesh, 3500 psi |

HOSE ACCESSORIES

| | |
|--------|-----------------------------------------------------|
| 18E175 | Dual FTS Kit for Independedntly Heated Hoses |
| 18E176 | Xcelerator Xtreme Wrap 50 feet |
| 18E177 | Xcelerator Xtreme Wrap 100 feet |



CORE TRANSFER PUMPS

| | |
|---------|------------------------------------------------------------------------------------|
| 26D004 | E1 Transfer Pump |
| 26D005 | E1 PKG: two pumps, Transfer Pump Controller, CAN cable |
| 26D006 | E1 PKG: two pumps, Transfer Pump Controller, CAN cable, fluid hoses |
| 26D277 | E1 PKG: two pumps, Transfer Pump Controller, CAN cable, fluid and air hoses |
| 2010456 | E2 Transfer Pump |
| 2010538 | E2 PKG: two pumps, Transfer Pump Controller, CAN cable |
| 2010539 | E2 PKG: two pumps, Transfer Pump Controller, CAN cable, fluid hoses |
| 2010540 | E2 PKG: two pumps, Transfer Pump Controller, CAN cable, fluid and air hoses |
| 26D000 | TPC: Transfer Pump Controller (TPC) |
| 273295 | T4/Core: Pump Lower, Carbon Steel (Bung adapter not included) |
| 24N451 | Kit: Tote extension tube |



T4 TRANSFER PUMPS

| | |
|---------|-----------------------------------------------------------------------------|
| 26D001 | T4 Pump |
| 26D002 | T4 PKG: two pumps, fluid hoses |
| 26D003 | T4 PKG: two pumps, fluid and air hoses |
| 273295 | T4/Core: Pump Lower, Carbon Steel, (Bung adapter not included) |
| 2003965 | T4/Core: Pump Lower, Carbon Steel, (Bung adapter and clamp included) |
| 25B395 | Kit: Bung Adapter, 2 in, EZ Removal |



KITS TO UPGRADE STANDARD AND PRO MODELS

| | |
|--------|---------------------------------------------------|
| 18E212 | Kit: Reactor 3, Ratio Assurance |
| 18E246 | Kit: Strainer, Reactor 3, Pair, Pro |
| 18E247 | Kit: Strainer, Reactor 3, Pair, Elite |
| 18E248 | Kit: Sensors, Inlet, Temperature, Pressure |
| 255148 | Kit: Large Recirculation Valve Set |



REACTOR CONNECT KITS

| | |
|--------|----------------------------------------------------------|
| 18E242 | Reactor Connect Kit: USA and Mexico, CAT-M, GPS |
| 18E245 | Reactor Connect Kit: Canada, CAT-1, GPS |
| 18E244 | Reactor Connect Kit: Var. Countries, CAT-M, GPS |
| 18E243 | Reactor Connect Kit: Var. Countries, 3G, GSM, GPS |
| 18E211 | Kit: R3,Remote Mount Bracket |

ACCESSORY KITS

| | |
|-----------|----------------------------------------------------|
| 18E154 | Kit: Reactor 3, Air Manifold |
| 20A677 | Kit: Reactor 3, Engine CAN, Harness |
| 20A676 | Kit: Reactor 3, Light Tower |
| 18D314PKG | ADM: Touchscreen screen protectors, 10 pack |
| 25T859 | Kit: TSL, bottle, (1 qt) |
| 24M174 | Kit: Drum level dip sticks |



ADD CORE TRANSFER PUMPS
TO ANY REACTOR 3

A Complete System Fully-Connected From Drum to Gun
For more information on transfer pump options, see P&A brochure

FOR PART NUMBERS AND MORE DETAILS
ON REACTOR 3 ACCESSORIES:

Visit graco.com/reactor3acc or ask your
local authorized Graco distributor





For more information visit [graco.com/contractor](https://www.graco.com/contractor)

©2025 Graco Inc. 3J0315 Rev. E 4/25 All other brand names or marks are used for identification purposes and are trademarks of their respective owners. All written and visual data contained in this document are based on the latest product information available at the time of publication. For more information on Graco's Intellectual Property see www.graco.com/patents or www.graco.com/trademarks. Product warranties are limited and subject to terms and conditions. Graco reserves the right to make changes at any time without notice.