



# KING<sup>®</sup> AIRLESS SPRAYERS

For Protective Coatings Applications



PROVEN QUALITY. LEADING TECHNOLOGY.



# THE INDUSTRY LEADER FOR OVER 60 YEARS

Whether it's a large coating project like a bridge, ship or tank, or a simple touch-up project that only takes a few hours, you depend on your spray equipment to deliver a flawless performance every time. Graco offers a complete lineup of the industry's most dependable single-component sprayers — in the exact size you need to accomplish any airless spray project.

## TRUST YOUR BUSINESS AND REPUTATION TO GRACO

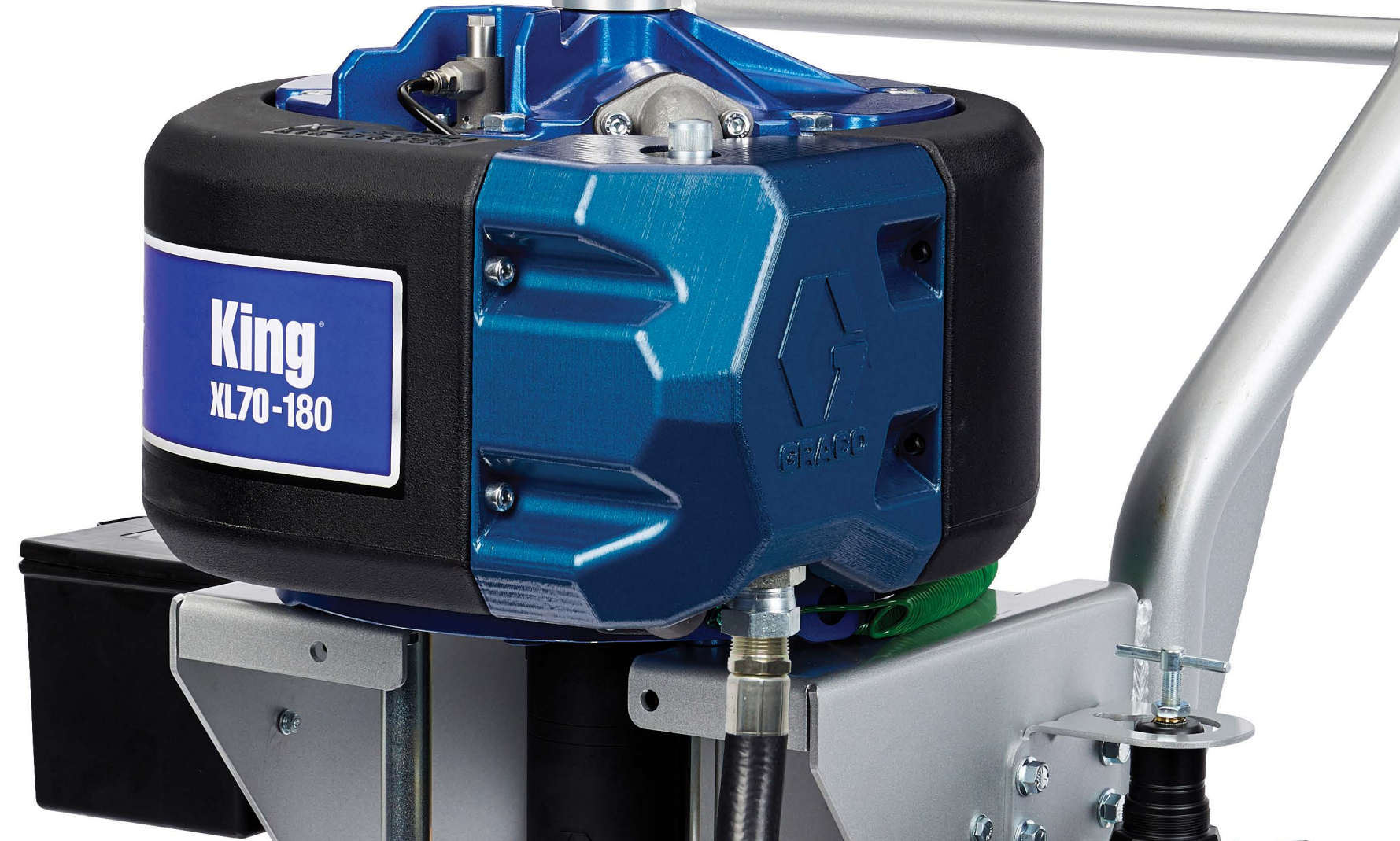
Graco is committed to providing the highest quality protective coating airless sprayers available, backed by the industry's best warranty.

## AMERICAN BUILT QUALITY SINCE 1926

100% factory-tested and field-proven Graco professional sprayers are manufactured, assembled and supported in the USA.

## INDUSTRY-LEADING WARRANTY

Behind every Graco sprayer is the industry's strongest warranty. You may never use Graco's warranty — but if you do, we will be there.



## GRACO EXCLUSIVE TECHNOLOGY THAT KEEPS YOU SPRAYING



(PATENTED)

### THE LONGEST LASTING PUMPS EVER BUILT

- Xtreme pumps offer Longest life in the industry with available MaxLife® piston rod and cylinder
- Up to 6X longer life
- Long-life ceramic balls for maximum versatility no matter what you're spraying (Optional Kit)



(PATENTED)

### LEGENDARY PERFORMANCE

- XL Air Motors provide a faster, more responsive changeover
- Thermally isolated external pilot lines minimize icing
- Little to no pulsation or pattern fluctuation, even with multiple guns



(PATENTED)

### LESS DOWNTIME FOR MORE PRODUCTIVITY

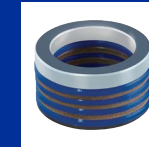
- Endurance™ Pump Lowers — quick and easy “on-the-job” pump removal and maintenance
- Xtreme Seal™ UHMWPE & Leather Packings for ultimate durability with most materials
- QuikAccess™ intake valve for easy access to lower ball check



(GRACO EXCLUSIVE)

### DIGITAL MONITORING

- Quickly monitor pump cycles and gallons sprayed
- Automatic runaway protection
- Customizable maintenance reminders



(PATENT PENDING)

### MATERIAL COMPATIBILITY

- Optional packing materials for the best pump performance — spray high solids, heated material, or solvent based coatings with confidence!
- UHMWPE & Leather
- UHMWPE & PTFE
- PTFE



(GRACO EXCLUSIVE)

### PLUG IN PERFORMANCE

- Electric driven pumps up to 7250 psi
- Available for use in standard and hazardous environments
- Eliminates the need for an air compressor





# THE RIGHT SPRAYER FOR EVERY JOB

With the widest selection of protective coating sprayers to choose from and a host of performance enhancing accessories, there is a Graco King sprayer to help you complete your projects — no matter how large or which coating.



## CHOOSING THE RIGHT SPRAYER

| TYPICAL APPLICATION     | POLYURETHANE TOP COATS  | FLAKE FILLED   | ZINC PRIMERS   | EPOXIES  | HIGH SOLIDS   | SILICONE  |
|-------------------------|---|--|--|--|---|---|
| FLUID PRESSURE          | 2000-4500 psi   | 3000-4500 psi  | 3000-4500 psi  | 3000-6000 psi  | 6000-7250 psi   | 6000-7250 psi   |
| SPRAYER RECOMMENDATIONS | Contractor King 45: 1 ●●●●<br>King XL25-290 ●<br>King XL30-220 ●●<br>King XL40-180 ●●<br>King XL45-290 ●●●<br>King XL45-430 ●●●●<br>King E50 ●● | Contractor King 45: 1 ●●●●<br>King XL30-220 ●●●<br>King XL40-180 ●●●<br>King XL45-290 ●●●●<br>King XL45-430 ●●●●●<br>King E50 ●● | Contractor King 45: 1 ●●●●<br>King XL30-220 ●●●<br>King XL40-180 ●●●<br>King XL45-290 ●●●●<br>King XL45-430 ●●●●●<br>King E50 ●● | Contractor King 45: 1 ●●●●<br>Contractor King 60: 1 ●●●●<br>King XL30-220 ●<br>King XL40-180 ●●<br>King XL45-290 ●●●<br>King XL45-430 ●●●●●<br>King XL50-250 ●●●●<br>King XL60-115 ●●●<br>King XL60-220 ●●●●<br>King E50 ●●<br>King E60 ●● | Contractor King 45: 1 ●●●●<br>Contractor King 60: 1 ●●●●<br>King XL30-220 ●<br>King XL40-180 ●●<br>King XL45-290 ●●●<br>King XL45-430 ●●●●●<br>King XL50-250 ●●●●<br>King XL60-115 ●●●<br>King XL60-220 ●●●●<br>King XL70-180 ●●●●<br>King XL70-290 ●●●●●<br>King XL80-250 ●●●●<br>King XL90-145 ●●<br>King E60 ●●●●<br>King E70 ●● | Contractor King 60: 1 ●●●●<br>Contractor King 70: 1 ●●●●<br>King XL60-115 ●●●<br>King XL60-220 ●●●<br>King XL70-180 ●●●●<br>King XL70-290 ●●●●●<br>King XL80-250 ●●●●<br>King XL90-145 ●●<br>King E60 ●●●●<br>King E70 ●● |
| RECOMMENDED ACCESSORIES | Air-assisted airless kit – 288527<br>DataTrak Monitoring – 24X552<br>55 Gallon Suction Set – 20A584   | 5 Gallon Pail Agitator – 243340<br>55 Gallon Twistork® Agitator – 256274<br>55 Gallon Suction Set – 20A584                       | 5 Gallon Pail Agitator – 243340<br>Zinc circulation kit – 238588<br>Gun Splitter with independent flush – 262826                 | Gun Splitter with independent flush – 262826<br>10 Gallon SST Hopper – 24X570 (for King)<br>10 Gallon SST Hopper – 25B619 (for Contractor King)  | Heater Mounting kit – 17V573 (for King)<br>Heater Mounting Kit – 18F785 (Contractor King)<br>10 Gallon SST Hopper – 24X570 (for King)<br>10 Gallon SST Hopper – 25B619 (for Contractor King)  | Monark 5:1 Feed pump kit – 256276<br>Xtreme Duty Agitator w/drum lid and 5:1 Monark – 25A601<br>Heater Mounting kit – 17V573 (for King)<br>Heater Mounting kit – 18F785 (for Contractor King)                             |

# THE RIGHT SPRAYER FOR EVERY JOB

With the widest selection of protective coating sprayers to choose from and a host of performance enhancing accessories, there is a Graco King sprayer to help you complete your projects — no matter how large or which coating.



NO MATTER THE JOB, GRACO HAS A KING UNIT FOR YOU — YOU CHOOSE!



| MODEL               | CONTRACTOR KING | KING E-SERIES          | KING   |
|---------------------|-----------------|------------------------|--------|
| INPUT POWER         | Air             | Electric (120v / 240v) | Air    |
| PORTABILITY         | ★★★★★           | ★★★                    | ★★★    |
| PUMP LOWER          | Endurance       | Xtreme                 | Xtreme |
| ENDURANCE ADVANTAGE | Yes             | —                      | —      |
| HAZARDOUS LOCATION  | Yes             | Available              | Yes    |
| RANGE OF MODELS     | ★★★             | ★★★★                   | ★★★★★  |



SCAN FOR MORE INFORMATION  
[GRACO.COM/KING](https://graco.com/king)



# CONTRACTOR KING

## AIR-POWERED SPRAYER

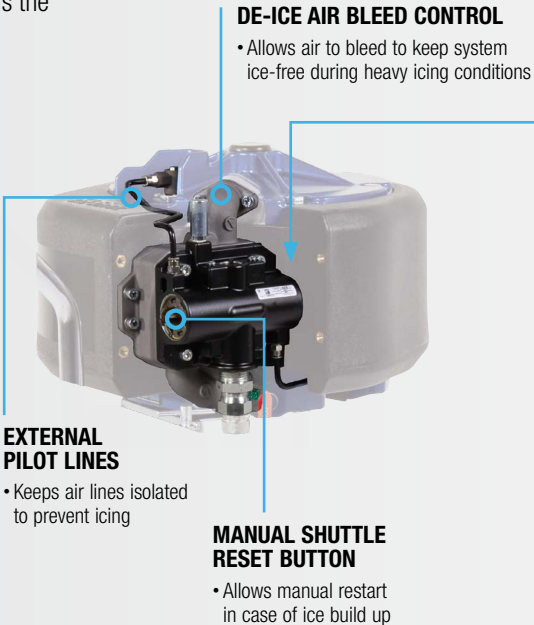
Introducing the newest member of the King family—the Contractor King! Designed around single-person mobility and high performance, this affordable line of air-powered sprayers is the perfect addition to every Contractor's fleet. Available in 4500 psi, 6000 psi and 7250 psi, there is a model for every job!

### SUPERIOR FINISH QUALITY WITH ADVANCED ANTI-ICING TECHNOLOGY

- XL6500 Air Motor**
- Field-proven design virtually eliminates icing to keep you spraying
  - Air-piloted for fast changeover and low pulsation
  - Durable aluminum, steel and composite construction for years of service

### PROVEN AIR VALVE DESIGN

- Delivers superior finish with no pulsation, even with multiple guns
- Simple design for easy serviceability
- Oversized porting for maximum air flow



- DURABLE, COMPACT DESIGN OFFERING EXTREME MOBILITY**
- Easy to Move and Transport**
- Nearly 100 lbs lighter than comparable models for easy, one-person handling
  - Chrome-plated, welded-steel frame for years of service
  - Integrated lifting points for easy positioning on any jobsite
  - Flat proof tires resist jobsite debris for maximum convenience



### COMFORT MEETS PERFORMANCE

#### INTRODUCING Silver Plus™ HP

#### HIGH-PRESSURE, AIRLESS SPRAY GUN\*

Featuring a compact and durable design and external fluid passages, this legendary design keeps your hand cool, while providing all-day spraying comfort.

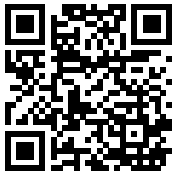
- Lasts up to 2X longer between repacks
- Up to 35% lighter than other guns in its class
- Easy-pull trigger for all-day comfort
- Rated up to 7250 psi
- Durable Steel and aluminum design features oversized fluid passages for less pressure loss
- The convenience of a single gun that works with all units in your fleet



\* Included with 60:1 and 70:1 complete and Big 150 models

| PART # | MODEL                           | INCLUDES   | MAX PSI / MAX GPM  | LOWER | WEIGHT  |
|--------|---------------------------------|--|--------------------|-------|---------|
| 279005 | Contractor King 45:1 (bare)     | —  | 4500 psi / 4.6 gpm | 290cc | 145 lbs |
| 279006 | Contractor King 45:1 (complete) | Silver Plus™ Gun, 3/8 in x 50 ft Hose, 1/4 in x 6 ft Whip Hose, XHD 417, 519 SwitchTip™ & Guard                |                    |       |         |
| 279007 | Contractor King 45:1 (Big 150)  | Silver Plus Gun, (3) 3/8 in x 50 ft Hose, 1/4 in x 6 ft Whip Hose, XHD 417, 519 SwitchTip, Guard & Fittings    |                    |       |         |
| 279010 | Contractor King 60:1 (bare)     | —  | 6000 psi / 3.4 gpm | 220cc | 140 lbs |
| 279011 | Contractor King 60:1 (complete) | Silver Plus HP Gun, 3/8 in x 50 ft Hose, 1/4 in x 6 ft Whip Hose, XHD 417, 519 SwitchTip, Guard & Fittings     |                    |       |         |
| 279012 | Contractor King 60:1 (Big 150)  | Silver Plus HP Gun, (3) 3/8 in x 50 ft Hose, 1/4 in x 6 ft Whip Hose, XHD 417, 519 SwitchTip, Guard & Fittings |                    |       |         |
| 279013 | Contractor King 70:1 (bare)     | —  | 7250 psi / 2.9 gpm | 180cc | 135 lbs |
| 279014 | Contractor King 70:1 (complete) | Silver Plus HP Gun, 3/8 in x 50 ft Hose, 1/4 in x 6 ft Whip Hose, XHD 417, 519 SwitchTip, Guard & Fittings     |                    |       |         |
| 279022 | Contractor King 70:1 (Big 150)  | Silver Plus HP Gun, (3) 3/8" x 50 ft Hose, 1/4 in x 6 ft Whip Hose, XHD 417, 519 SwitchTip, Guard & Fittings   |                    |       |         |

| MODEL                       | PART # |
|-----------------------------|--------|
| Silver Plus HP 2 Finger Gun | 273334 |
| Silver Plus HP 4 Finger Gun | 273335 |



SCAN FOR MORE INFORMATION  
[GRACO.COM/CONTRACTORKING](https://graco.com/contractorking)



# CONTRACTOR KING

## AIR-POWERED SPRAYER

**ENDURANCE LOWER FOR QUICK AND EASY  
“ON-THE-JOB” PUMP REMOVAL & MAINTENANCE  
— NOTHING IS FASTER!**



**PROVEN DESIGN AND PERFORMANCE**

- Chromex™ Rod and Stainless Steel cylinder for maximum life and performance
- Xtreme Seal™ UHMWPE & Leather packings for ultimate durability with most materials
- QuikAccess™ intake valve for easy access to lower ball check

**REMOVE THE PUMP IN 3 EASY STEPS**



1. Remove rod coupling, inlet hose and paint hose
2. Loosen jam nut
3. Spin pump to remove



**BUILD IT THE WAY YOU NEED IT, WITH THESE GREAT ACCESSORIES!**



| CONTRACTOR KING ACCESSORIES |                               | PART # |
|-----------------------------|-------------------------------|--------|
| 1                           | Stainless Steel Hopper Kit    | 25B619 |
| 2                           | Paint Outlet Filter Kit       | 16V583 |
| 3                           | Lift Ring Kit                 | 19D953 |
| 4                           | Air Filter and Lubricator Kit | 19D955 |
| 5                           | 45:1 Lower Kit (290cc)        | 19D954 |
|                             | 60:1 Lower Kit (220cc)        | 19D952 |
|                             | 70:1 Lower Kit (180cc)        | 19D951 |
| 6                           | Heater Mounting Kit           | 18F785 |

**BIG 150 "READY-TO-SPRAY" PACKAGES PRECONFIGURED  
WITH 150 FT HOSE FOR THE BIG JOBS!**

- All components and large diameter hose
- Maximize productivity right from the start
- Ultimate for convenience and value
- Available for all Contractor King models





# KING

## AIR-POWERED SPRAYER

Designed with Graco's XL Air Motor, the King family of sprayers are proven to outperform and outlast all other sprayers in its class. Available in three motor sizes, the King Air-Powered sprayer can handle the toughest protective coatings materials for any size job.

### A SPRAYER FOR EVERY LOCATION

- Heavy Duty Carts for the most demanding jobsites
- Lightweight Cart options for mobility, perfect for shop locations
- Wall mount options for static emplacements, perfect for assembly line applications

### BUILT IN TOOL STORAGE

- Conveniently mounded on a cart
- Store your day-to-day essentials such as tools and spray tips for quick and easy access

### MONITOR CYCLES AND VOLUMES EASILY

- Automatically converts cycles to volume of material sprayed
- Volume can easily be shown in ounces, gallons or liters
- Can set up preventative maintenance reminders at user defined intervals



Part number: 24X550

OPTIONAL ACCESSORY

### EXTERNAL PILOT LINES

- Keeps air lines isolated to prevent icing

### MANUAL SHUTTLE RESET BUTTON

- Allows manual restart in case of ice build up



### ROBUST AIR CONTROLS

- High capacity filter regulator
- Lubricator option for extreme operating conditions



### XTREME

- Oversized clearances insure minimal pressure drop and increased performance



### XTREME INTEGRAL FILTER

- In line material filtration without the need for additional fittings or components. 30, 60 or 100 mesh available



### XTREME MAXLIFE

- Exclusive MaxLife Rod and Cylinder. Lasts up to 6X longer between repacks

| MOTOR                      | XL10000            |                    |                    | XL6500             |                    |                    |                    | XL3400             |                    |
|----------------------------|--------------------|--------------------|--------------------|--------------------|--------------------|--------------------|--------------------|--------------------|--------------------|
| MODEL                      | XL45-430           | XL70-290           | XL80-250           | XL45-290           | XL60-220           | XL70-180           | XL90-145           | XL30-220           | XL40-180           |
| Output per cycle           | 430cc              | 290cc              | 250cc              | 290cc              | 220cc              | 180cc              | 145cc              | 220cc              | 180cc              |
| Maximum Stall Pressure     | 4500 psi (310 bar) | 7250 psi (500 bar) | 7250 psi (500 bar) | 4500 psi (310 bar) | 6000 psi (414 bar) | 7250 psi (500 bar) | 7250 psi (500 bar) | 3150 psi (217 bar) | 3800 psi (262 bar) |
| Maximum Air Input Pressure | 95 psi (6.5 bar)   | 100 psi (7 bar)    | 88 psi (6 bar)     | 100 psi (7 bar)    | 100 psi (7 bar)    | 100 psi (7 bar)    | 80 psi (5.5 bar)   | 100 psi (7 bar)    | 100 psi (7 bar)    |
| Output at 60 Cycles/min    | 6.7 gpm (25.4 lpm) | 4.6 gpm (17.4 lpm) | 4.0 gpm (15.2 lpm) | 4.6 gpm (17.4 lpm) | 3.4 gpm (12.9 lpm) | 2.9 gpm (11 lpm)   | 2.3 gpm (8.7 lpm)  | 3.4 gpm (12.9 lpm) | 2.9 gpm (11 lpm)   |

<sup>†</sup>Uses Dura® Flo™ lower

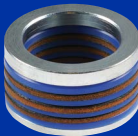
# XTREME PUMPS

## THE BEST JUST GOT BETTER – MAXLIFE TECHNOLOGY KEEPS YOU SPRAYING

The Xtreme family of severe-duty lowers are job-site proven to provide the reliability and durability to get the job done - every time.

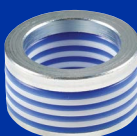
## MULTIPLE PACKING MATERIALS

Packings play a critical role in getting the best performance possible while spraying. Customize your pump with additional packing material kits best suited for your coating.



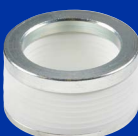
### LEATHER & UHMWPE

- Standard packings in all pumps
- Best for most coatings/abrasive resistance



### UHMWPE & PTFE

- Best for applications below 140 F that require both abrasive and solvent resistance



### PTFE

- Best for applications that require high heat resistance or solvent compatibility



# KING

## XL30 AND XL40 SPRAYERS

Equipped with Graco's XL 3400 Air Motor, the King XL40-180 sprayers are designed to out perform and outlast all other sprayers in its class. It handles the toughest protective coatings and corrosion control materials.

### INCLUDES ALL THE STANDARD KING FEATURES PLUS:

#### XL3400 7 INCH AIR MOTOR

- With up to 20% less air consumption than the XL6500
- Lighter weight for increased mobility on the jobsite

#### AIRLESS OR AIR-ASSISTED SPRAYING\*

- Air-Assisted Airless spray packages for precision coating finishes
- Add an air-assisted airless spray kit for fine finish applications
- Can be installed to any existing XL25, XI30 or XL40 sprayer.



Part number:  
288527

\*See page 16 (specialty packages page)

OPTIONAL ACCESSORY



King XL40-180  
K40FH1

# KING

## XL45, XL60 AND XL70 SPRAYERS

Designed with the Graco XL6500 Air Motor, these King sprayers are the industry standard sprayer for protective coating contractors.

#### XL6500 10 INCH AIR MOTOR

- Spray pressure packages from 4500-7250 PSI, 20% more than XL3400 packages!
- More than 80% more flow than XL3400 models at the same spray pressure

#### 10 GALLON STAINLESS STEEL HOPPER

- Features no tool removal for quick pump access
- Angular designed corners for easy cleaning
- Lid protects material and keeps debris out
- Fits all models of king sprayers on both Heavy Duty and Lightweight cart designs

Hopper kit 24X570 shown.  
Available as a bolt on accessory  
for all king sprayers.



OPTIONAL ACCESSORY



King XL70-180  
K70MH2

### KING XL3400 SPRAY PACKAGES

| PART # | MODEL                  | INCLUDES   | MAX PSI / MAX GPM                       |
|--------|------------------------|--|---|
| K30FH0 | King XL30-220 w/Filter | Cart mount with 5 gallon siphon set  | 3150 psi (217 bar) / 3.4 gpm (12.9 lpm) |
| K30FW0 | King XL30-220 w/Filter | Wall mount with 55 gallon siphon set   | 3150 psi (217 bar) / 3.4 gpm (12.9 lpm) |
| K30FH1 | King XL30-220 w/Filter | Cart mount with 5 gallon siphon set, Pressure rated XTR+ gun, 3/8 in x 50 ft Hose, 1/4 in x 6 ft Whip Hose, XHD 519 SwitchTip, Guard & Fittings  | 3150 psi (217 bar) / 3.4 gpm (12.9 lpm) |
| K40FH0 | King XL40-180 w/Filter | Cart mount with 5 gallon siphon set  | 3800 psi (262 bar) / 2.9 gpm (11 lpm)   |
| K40FW0 | King XL40-180 w/Filter | Wall mount with 55 gallon siphon set   | 3800 psi (262 bar) / 2.9 gpm (11 lpm)   |
| K40FH1 | King XL40-180 w/Filter | Cart mount with 5 gallon siphon set, Pressure rated XTR+ gun, 3/8 in x 50 ft Hose, 1/4 in x 6 ft Whip Hose, XHD 519 SwitchTip, Guard & Fittings  | 3800 psi (262 bar) / 2.9 gpm (11 lpm)   |
| K40FW1 | King XL40-180 w/Filter | Wall mount with 55 gallon siphon set, Pressure rated XTR+ gun, 3/8 in x 50 ft Hose, 1/4 in x 6 ft Whip Hose, XHD 519 SwitchTip, Guard & Fittings | 3800 psi (262 bar) / 2.9 gpm (11 lpm)   |

### KING XL6500 SPRAY PACKAGES

| PART # | MODEL                   | INCLUDES  | MAX PSI / MAX GPM                       |
|--------|-------------------------|---|---|
| K45FH0 | King XL45-290 w/Filter  | Cart mount with 5 gallon siphon set   | 4500 psi (310 bar) / 4.6 gpm (17.4 lpm) |
| K45FH1 | King XL45-290 w/Filter  | Cart mount with 5 gallon siphon set, Pressure rated XTR+ gun, 3/8 in x 50 ft Hose, 1/4 in x 6 ft Whip Hose, XHD 519 SwitchTip, Guard & Fittings | 4500 psi (310 bar) / 4.6 gpm (17.4 lpm) |
| K45NH1 | King XL45-290 No Filter | Cart mount with 5 gallon siphon set, Pressure rated XTR+ gun, 3/8 in x 50 ft Hose, 1/4 in x 6 ft Whip Hose, XHD 519 SwitchTip, Guard & Fittings | 4500 psi (310 bar) / 4.6 gpm (17.4 lpm) |
| K60FH0 | King XL60-220 w/Filter  | Cart mount with 5 gallon siphon set   | 6000 psi (414 bar) / 3.4 gpm (12.9 lpm) |
| K60FH1 | King XL60-220 w/Filter  | Cart mount with 5 gallon siphon set, Pressure rated XTR+ gun, 3/8 in x 50 ft Hose, 1/4 in x 6 ft Whip Hose, XHD 519 SwitchTip, Guard & Fittings | 6000 psi (414 bar) / 3.4 gpm (12.9 lpm) |
| K60NH1 | King XL60-220 No Filter | Cart mount with 5 gallon siphon set, Pressure rated XTR+ gun, 3/8 in x 50 ft Hose, 1/4 in x 6 ft Whip Hose, XHD 519 SwitchTip, Guard & Fittings | 6000 psi (414 bar) / 3.4 gpm (12.9 lpm) |
| K70FH0 | King XL70-180 w/Filter  | Cart mount with 5 gallon siphon set   | 7250 psi (500 bar) / 2.9 gpm (11 lpm)   |
| K70FH1 | King XL70-180 w/Filter  | Cart mount with 5 gallon siphon set, Pressure rated XTR+ gun, 3/8 in x 50 ft Hose, 1/4 in x 6 ft Whip Hose, XHD 519 SwitchTip, Guard & Fittings | 7250 psi (500 bar) / 2.9 gpm (11 lpm)   |
| K70NH1 | King XL70-180 No Filter | Cart mount with 5 gallon siphon set, Pressure rated XTR+ gun, 3/8 in x 50 ft Hose, 1/4 in x 6 ft Whip Hose, XHD 519 SwitchTip, Guard & Fittings | 7250 psi (500 bar) / 2.9 gpm (11 lpm)   |
| K70MH2 | King XL70-180 w/MaxLife | Cart mount with 5 gallon siphon set, Pressure rated XTR+ gun, 3/8 in x 50 ft Hose, 1/4 in x 6 ft Whip Hose, XHD 519 SwitchTip, Guard & Fittings | 7250 psi (500 bar) / 2.9 gpm (11 lpm)   |
| K45MH2 | King XL45-290 w/MaxLife | Cart mount with 5 gallon siphon set, Pressure rated XTR+ gun, 3/8 in x 50 ft Hose, 1/4 in x 6 ft Whip Hose, XHD 519 SwitchTip, Guard & Fittings | 4500 psi (310 bar) / 4.6 gpm (17.4 lpm) |



# KING

## XL45, XL70 AND XL80 SPRAYERS

If you have large jobs that require a high-output sprayer, then these are the sprayers of choice. Built with the Graco XL 10000 Air Motor, the largest air motor Graco has ever built, the King XL10000 sprayers handle the workload equivalent of multiple sprayers.

### KING FEATURES:

#### XL10000 13 INCH AIR MOTOR

- Largest Air motor in its class
- Reduces pump duty cycle for increased packing life

#### OUR LARGEST OUTPUT PUMP FOR THE LARGEST JOBS

- Up to 35% more flow than XL6500 packages
- Delivers high fluid flow, supporting up to 8 guns!
- Available with pump sizes up to 430cc. Lower cycle rate for even longer pump life!



#### 4-WAY GUN SPLITTER ACCESSORY

- Easily convert your sprayer to support additional guns and hoses.
- Ported in 1/2 in NPT, will fit on all models of King Sprayers



Part number: 17V587

OPTIONAL ACCESSORY



King XL70-290 K71FH1

#### KING XL10000 SPRAY PACKAGES

| PART # | MODEL                   | INCLUDES   | MAX PSI / MAX GPM                       |
|--------|-------------------------|--|---|
| K47FH1 | King XL45-430 w/Filter  | Pressure rated XTR+ gun, 3/8 in x 50 ft Hose, 1/4 in x 6 ft Whip Hose, XHD 519 SwitchTip, Guard & Fittings | 4500 psi (310 bar) / 6.7 gpm (25.4 lpm) |
| K71FH1 | King XL70-290 No Filter | Pressure rated XTR+ gun, 3/8 in x 50 ft Hose, 1/4 in x 6 ft Whip Hose, XHD 519 SwitchTip, Guard & Fittings | 7250 psi (500 bar) / 4.6 gpm (17.4 lpm) |
| K71NH1 | King XL70-290 No Filter | Pressure rated XTR+ gun, 3/8 in x 50 ft Hose, 1/4 in x 6 ft Whip Hose, XHD 519 SwitchTip, Guard & Fittings | 7250 psi (500 bar) / 4.6 gpm (17.4 lpm) |
| K82FH1 | King XL80-250 w/Filter  | Pressure rated XTR+ gun, 3/8 in x 50 ft Hose, 1/4 in x 6 ft Whip Hose, XHD 519 SwitchTip, Guard & Fittings | 7250 psi (500 bar) / 4.0 gpm (12.9 lpm) |
| K82NH1 | King XL80-250 No Filter | Pressure rated XTR+ gun, 3/8 in x 50 ft Hose, 1/4 in x 6 ft Whip Hose, XHD 519 SwitchTip, Guard & Fittings | 7250 psi (500 bar) / 4.0 gpm (12.9 lpm) |

For additional models, see page 29

# SPECIALTY PACKAGES

Decide which system fits your application needs with these specially built packages from Graco. Whether you need a heavy coatings solution with longer hose lengths and hoppers, or an air-assisted package for fine finish — we got you covered. And for those who need a complete custom solution, Graco offers bare air motor units with no pump lower to configure to your exact specifications.

#### KING HEAVY FLUID PACKAGES

| PART #             | MODEL   | INCLUDES   |
|--------------------|---|--|
| XL6500 Air Motors  |   |  |
| 26C891             | King XL70-180 Heavy-fluid 2 gun spray package | 2 XHF™ Guns, 1/2 in x 50 ft Hoses, 3/8 in x 6 ft Whip Hoses, XHD429 Spray Tips, 10 gal SST Hopper    |
| 26C349             | King XL70-180 Heavy-fluid Big 250 package     | XHF Gun, 3/4 in x 200 ft Hose, 1/2 in x 50 ft Hose, Whip Hose, XHD531 Spray Tips, 10 gal SST Hopper  |
| XL10000 Air Motors |   |  |
| 24X593             | King XL70-290 Heavy-fluid spray package       | XHF Gun, 3/4 in x 50 ft Hoses, 1/2 in x 25 ft Whip Hoses, XHD429 Spray Tips, 10 gal SST Hopper       |
| 24X594             | King XL80-250 Heavy-fluid spray package       | XHF Gun, 3/4 in x 50 ft Hoses, 1/2 in x 25 ft Whip Hoses, XHD429 Spray Tips, 10 gal SST Hopper       |
| 26C892             | King XL70-290 Heavy-fluid 2 gun spray package | 2 XHF Guns, 1/2 in x 50 ft Hoses, 3/8 in x 6 ft Whip Hoses, XHD431 Spray Tips, 10 gal SST Hopper     |
| 26C350             | King XL70-290 Heavy-fluid Big 250 package     | XHF Gun, 3/4 in x 200 ft Hoses, 1/2 in x 50 ft Hose, Whip Hose, XHD531 Spray Tips, 10 gal SST Hopper |



#### AIR-ASSISTED AIRLESS XL3400 PACKAGES:

| PART # | MODEL   | INCLUDES   |
|--------|---|--|
| 287975 | King XL30-220 Air-assisted Airless spray package* | Package includes atomization air regulator, 1/4 in. x 50 ft. (15m) spray line, 1/4 in. x 50 ft. airline, G40 spray gun with LTX___ tip of choice |
| 287976 | King XL40-180 Air-assisted Airless spray package* | Package includes atomization air regulator, 1/4 in. x 50 ft. (15m) spray line, 1/4 in. x 50 ft. airline, G40 spray gun with LTX___ tip of choice |

#### KING CART PACKAGES WITHOUT LOWERS, NO LUBRICATOR

| PART # | MODEL                              | INCLUDES   |
|--------|------------------------------------|--|
| KN3DHO | XL3400 on a Bare Heavy-Duty Cart*  | Includes tie rods, coupling kit and a suction hose |
| KN3DLO | XL3400 on a Bare Lightweight Cart* | Includes tie rods, coupling kit and a suction hose |
| KN6DHO | XL6500 on a Bare Heavy-Duty Cart*  | Includes tie rods, coupling kit and a suction hose |
| KN6DLO | XL6500 on a Bare Lightweight Cart* | Includes tie rods, coupling kit and a suction hose |

For additional models, see Ordering Matrix on page pages 27-30

# KING E-SERIES ELECTRIC-POWERED SPRAYER

Graco's King E-Series Electric Airless Sprayers are the world's first electric sprayer for protective coatings approved for hazardous and non-hazardous locations. Powered by an electric motor, it eliminates the need to mobilize your large air compressor — saving time and money.

## THE PERFECT SINGLE GUN SPRAYER

### AN ELECTRIC SOLUTION FOR MULTIPLE APPLICATIONS

- Eliminates need for air and fuel
- Works on 120V or 240V for ultimate convenience
- No more delays due to air motor icing!

### LOW DECIBEL OPERATION

- Up to 5 times quieter than traditional air motors
- Less than 80dba noise level for comfortable spraying

### LOWER OPERATING COSTS

- Eliminates all the costs and hassles of having to mobilize a large air compressor
- Can be run from generator or shore power

### 10 GALLON STAINLESS STEEL HOPPER

- Features no tool removal for quick pump access
- Angular designed corners for easy cleaning
- Lid protects material and keeps debris out
- Fits all models of king sprayers on both Heavy Duty and Lightweight cart designs

Hopper kit 24X570 shown. Available as a bolt on accessory for all king sprayers.



OPTIONAL ACCESSORY



**ELECTRICALLY OPERATED**

- Easy to use controls - just adjust to desired pattern and spray
- Change spray pressures with the turn of a knob
- 3 year limited warranty

**NON-HAZ OR HAZ-LOC APPROVED**

- Patented motor design for use in hazardous locations available on some models
- Perfect for use on off shore locations, or other volatile spray environments.

**INDUSTRY STANDARD XTREME PUMP TECHNOLOGY**

- Uses same repair kits as standard King Sprayers
- E50 Haz-Loc and E60 - 145cc
- E60 Haz-Loc and E70 - 115cc

**STATIC OR MOBILE PLATFORMS**

- Available with Heavy Duty and Lightweight Cart, or Wall Mounted configurations (see page 30)
- Optional suction sets or feed pumps for all size material containers

Hazardous Location Model shown 273254

Hazardous Location Model shown 273249

| PART # | HAZARDOUS LOCATION                       | INCLUDES   | MAX PSI / MAX GPM  | LOWER |
|--------|--|--|--------------------|-------|
| 273246 | E60 Heavy Duty Cart, w/Filter (Complete) | Pressure rated XTR+ gun, 3/8 in x 50 ft Hose, 1/4 in x 6 ft Whip Hose, XHD 519 SwitchTip, Guard & Fittings   | 6000 psi / 0.7gpm  | 115cc |
| 273252 | E50 Heavy Duty Cart, w/Filter (Complete) | Pressure rated XTR+ gun, 3/8 in x 50 ft Hose, 1/4 in x 6 ft Whip Hose, XHD 519 SwitchTip, Guard & Fittings   | 5000 psi / 0.9 gpm | 145cc |
| 273262 | E60 Heavy Fluids Package (Complete)      | XHF High Flow spray gun, 1/2 in x 50 ft pressure rated hose and 3/8 in x 6 ft whip.10 gallon Stainless Steel Hopper, XHD419 and XHD521 SwitchTip, Guard & Fittings   | 6000 psi / 0.7 gpm | 115cc |
| PART # | NON-HAZARDOUS LOCATION                   | INCLUDES   | MAX PSI / MAX GPM  | LOWER |
| 273752 | E60 Heavy Duty Cart w/Filter (Complete)  | Pressure rated XTR+ gun, 3/8 in x 50 ft Hose, 1/4 in x 6 ft Whip Hose, XHD 519 SwitchTip, Guard & Fittings   | 6000 psi / 0.9 gpm | 145cc |
| 273746 | E70 Heavy Duty Cart w/Filter (Complete)  | Pressure rated XTR+ gun, 3/8 in x 50 ft Hose, 1/4 in x 6 ft Whip Hose, XHD 519 SwitchTip, Guard & Fittings   | 7250 psi / 0.7gpm  | 115cc |
| 273764 | E60 Heavy Fluids Package (Complete)      | XHF High Flow spray gun, 1/2 in x 50 ft pressure rated hose and 3/8 in x 6 ft whip. 10 gallon Stainless Steel Hopper, XHD419 and XHD521 SwitchTip, Guard & Fittings" | 7250 psi / 0.9 gpm | 145cc |

For additional models, see Ordering Matrix on page #



# NO MATTER THE JOB, GRACO HAS THE RIGHT GUN FOR YOU

Contractors throughout the world prefer Graco guns for their outstanding durability and reliable performance. Whether your material is flake filled material or a thin body coating, Graco has best solution for any job.

| MODEL          | MAX WORKING PRESSURE | GUN FILTER | GUN SWIVEL | TRIGGER      | FLUID PASSAGES            |
|----------------|----------------------|------------|------------|--------------|---------------------------|
| XRT5+          | 5000                 | Yes        | Integrated | 2 & 4 Finger | Standard (through handle) |
| Silver Plus    | 5000                 | No         | Accessory  | 2 & 4 Finger | Large (direct to tip)     |
| Silver Plus HP | 7250                 | No         | Accessory  | 2 & 4 Finger | Large (direct to tip)     |
| XRT7+          | 7250                 | Yes        | Integrated | 4 Finger     | Standard (through handle) |
| XRT7+ Hi Flo   | 7250                 | Yes        | Integrated | 2 & 4 Finger | Large (through handle)    |
| XHF            | 7250                 | No         | Accessory  | 4 Finger     | Oversized (direct to tip) |

## XTR+

As the #1 choice of protective coating contractors, Graco's XTR-5+, XTR-7+, and XTR-7+ High Flow Guns are designed to be the longest lasting, most reliable airless spray guns on the market.

### VERSATILE DESIGN

- Available with both 2-Finger and 4-Finger triggers
- XTR5+ and XTR7+ feature two handle options providing maximum control and comfort even when handling heated materials
- Detachable trigger guard swings clear of gun handle for easy filter access

### EASY OUT™ GUN FILTER

- Filters from the inside out to prevent filter from collapsing
- Optimized high viscosity fluid packages for the thickest of materials

### BUILT-IN SWIVEL

- Exclusive dual-seat Swivel design reduces sealing friction under pressure, making this the best swivel on the market
- Optional suction sets or feed pumps for all size material containers

### GUN TRIGGER AND TRIGGER LOCK

- Smooth, lightweight trigger pull with simple, thumb-engaged safety lock
- Custom trigger options

### XTR5+AIRLESS SPRAY GUN, 5000 PSI (345 BAR, 34.5 MPA)

| PART # | DESCRIPTION  |
|--------|--|
| XTR520 | 1 In Round Handle, 4-Finger Trigger, no Tip          |
| XTR521 | 1 In Round Handle, 4-Finger Trigger, 519 Flat Tip    |
| XTR522 | Oval-insulated Handle, 4-Finger Trigger, 519 XHD RAC |
| XTR523 | Oval-insulated Handle, 2-Finger Trigger, 519 XHD RAC |
| XTR524 | 1 In Round Handle, 4-Finger Trigger, 519 XHD RAC     |
| XTR525 | 1 In Round Handle, 2-Finger Trigger, 519 XHD RAC     |



XTR5+  
XTR524  
(PATENTED)

### XTR7+ AIRLESS SPRAY GUN, 7250 PSI (500 BAR, 50 MPA)

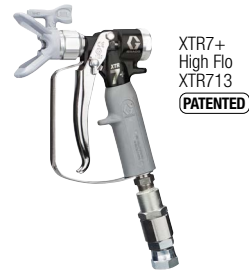
| PART # | DESCRIPTION  |
|--------|--|
| XTR720 | Round Handle, 4-Finger Trigger, no Tip                   |
| XTR721 | Round Handle, 4-Finger Trigger, 519 Flat Tip             |
| XTR722 | Oval-insulated Handle, 4-Finger Trigger, 519 XHD RAC Tip |
| XTR723 | Oval-insulated Handle, 2-Finger Trigger, 519 XHD RAC Tip |
| XTR724 | Round Handle, 4-Finger Trigger, 519 XHD RAC Tip          |
| XTR725 | Round Handle, 2-Finger Trigger, 519 XHD RAC Tip          |



XTR7+  
XTR724  
(PATENTED)

### XTR7+™ HF HIGH FLOW AIRLESS SPRAY GUN, 7250 PSI (500 BAR)

| PART # | DESCRIPTION  |
|--------|--|
| XTR710 | Round Handle, 4-Finger Trigger, no Tip                   |
| XTR711 | Round Handle, 4-Finger Trigger, 519 Flat Tip             |
| XTR712 | Oval-insulated Handle, 4-Finger Trigger, 519 XHD RAC Tip |
| XTR713 | Oval-insulated Handle, 2-Finger Trigger, 519 XHD RAC Tip |
| XTR714 | Round Handle, 4-Finger Trigger, 519 XHD RAC Tip          |
| XTR715 | Round Handle, 2-Finger Trigger, 519 XHD RAC Tip          |



XTR7+  
High Flo  
XTR713  
(PATENTED)

### XTR+ GUN ACCESSORIES, (FITS BOTH XTR5+ AND XTR7+)

| PART # | DESCRIPTION  | PART # | DESCRIPTION                         |
|--------|--|--------|-------------------------------------|
| 273141 | Gun Repair Kit (includes Gasket, Needle, and Seat) | 287032 | Filter, 60 mesh                     |
| 287449 | 4-Finger Round Trigger Kit                         | 287033 | Filter, 100 mesh                    |
| 287450 | 2-Finger Trigger Kit                               | 287034 | Filter, 60 and 100 mesh combination |
| 287451 | 4-Finger Oval Insulation Trigger Kit               |        |                                     |

# SILVER PLUS & SILVER PLUS HP™

As the preferred gun for many contractors, Graco's Silver Plus Gun is known for its durability, long life, spraying performance, and comfortable design.



Silver Plus HP Gun  
273334  
7250 psi  
(PATENTED)

LASTS UP TO 2X LONGER  
BETWEEN REPACKS



Silver Plus Gun  
246240  
5000 psi  
(PATENTED)

### LIGHTWEIGHT, RUGGED DESIGN

- Durable forged aluminum withstands harsh work environments
- Lighter weight than competitive guns
- Polished body is easy to clean

### ERGONOMIC DESIGN HANDLE

- Form-fitted handle for less fatigue
- Provides more control of gun while spraying

### EXCLUSIVE NEEDLE DESIGN

- Factory-set needle needs no trigger adjustments
- Guaranteed for life against breakage
- Maximum performance and long life

### STAINLESS STEEL FLUID TUBE

Fluid flows directly to the tip through the gun fluid tube, giving you the ability to spray heavier materials, such as high solid coatings and mastics, up to 7250 psi\* (500 bar, 50.0 MPa)

\*Silver Plus HP



### SILVER PLUS AIRLESS SPRAY GUN 5000 PSI (345 BAR)

| PART # | DESCRIPTION   |
|--------|---|
| 246240 | Silver Plus Gun (2-finger) with RAC® X™ 517 Tip and Guard |
| 243283 | Silver Plus Gun (2-finger) with RAC 5 517 Tip and Guard   |
| 235460 | Silver Plus Gun (2-finger) with Flat Tip and Guard        |
| 235461 | Silver Plus Gun (4-finger) with Flat Tip and Guard        |



### SILVER PLUS HP AIRLESS SPRAY GUN 7250 PSI (500 BAR)

| PART # | DESCRIPTION  |
|--------|--|
| 273334 | Silver Plus HP Gun (2-finger) with XHD 419 Tip and Guard |
| 273335 | Silver Plus HP Gun (4-finger) with XHD 419 Tip and Guard |
| 235474 | Repair Kit (Silver Plus)                                 |
| 20B225 | Repair Kit (Silver Plus HP)                              |



# XHF HIGH-FLO

The XHF gun is the ideal choice for the heaviest coatings and fibrous materials. These guns feature oversized fluid passages and a filterless design for maximum flow and superior atomization.



XHF Gun  
262854



XHF Gun  
Top Mount  
26C793  
**PATENTED**

## OVERSIZED FLUID PATH

- No-filter design offers minimal restriction and maximum flow
- Minimizes pack-out with heavy and filled materials
- Reduces pressure drop for superior atomization

## JOBSITE PROVEN

- Perfect for the most demanding high viscosity, protective coatings, including epoxy intumescent coatings and fiber filled materials

## PATENTED NEEDLE DESIGN

- Factory-set needle — no adjustment ever
- Heavy-duty design for maximum performance and long life

## ERGONOMIC DESIGN

- Form-fitting handle provides maximum control and comfort while spraying
- Optimized trigger and lightweight design allows effortless, all-day spraying

### XHF AIRLESS SPRAY GUN 7250 PSI (500 BAR)

| PART # | DESCRIPTION                             |
|--------|---|
| 262854 | XHF Gun, includes XHD 429 Tip           |
| 26C793 | XHF Gun, Top Feed, includes XHD 429 Tip |
| 273260 | Repair Kit (XHF Gun)                    |

## AUTOMATIC AIRLESS GUNS

Control your spray applicator with a pneumatic air signal — perfect for use with a robotic arm or assembly line.

### COMPACT DESIGN

- Easily mounted to any fixture or robotic arm
- Compact and lightweight to help increase production speed with low cost of ownership
- Optimized for use with protective coating materials up to 7250 psi (500 bar)



AL-5 Gun  
26C624



AL-7 Gun  
26C625

### AUTOMATIC AIRLESS GUNS

| PART # | DESCRIPTION   |
|--------|---|
| 26C624 | AL-5 gun, for high-pressure protective coatings materials, 5000 psi (350 bar) |
| 26C625 | AL-7 gun, for high-pressure protective coatings materials, 7250 psi (500 bar) |

### AUTOMATIC AIRLESS MANIFOLD ACCESSORIES

| PART # | DESCRIPTION   |
|--------|---|
| 241161 | NPT Fittings, 5000 psi (350 bar)  |
| 241162 | JIC Fittings, 5000 psi (350 bar)  |
| 26C622 | NPT Fittings, 7250 psi (500 bar)  |
| 244930 | High Flow Ambient or Temperature Conditioned Manifold for streaming or spraying, 5000 psi (350 bar) |

## GUN AND HOSE KITS

| PART # | DESCRIPTION  |
|--------|--|
| 26C962 | XTR520, (2) XHD519 SwitchTips, hose and whip hose              |
| 26C963 | XTR720, (2) XHD519 SwitchTips, hose and whip hose              |
| 273142 | XTR520, (1) XHD317 & (1) XHD319 SwitchTips, hose and whip hose |
| 273143 | XTR720, (1) XHD317 & (1) XHD319 SwitchTips, hose and whip hose |
| 19D624 | Silver Plus, 50' hose bundle, whip hose, XHD417 SwitchTip      |
| 19D625 | Silver Plus HP, 50' hose bundle, whip hose, XHD417 SwitchTip   |
| 19D646 | Silver Plus, 150' hose bundle, whip hose, XHD417 SwitchTip     |
| 19D647 | Silver Plus HP, 150' hose bundle, whip hose, XHD417 SwitchTip  |

## HIGH PRESSURE FITTINGS KIT

| PART # | DESCRIPTION                |
|--------|----------------------------|
| 25A212 | High Pressure Fittings Kit |



## HEAVY-DUTY EXTENSIONS

- Attach to any airless spray gun or in-line valve
- Tough, lightweight aluminum poles
- Ideal for high pressure spraying

| PART # | DESCRIPTION  |
|--------|--|
| 246294 | 10 in (254 mm) Gun Extension, 7250 psi (500 bar, 50 MPa) |
| 246295 | 15 in (380 mm) Gun Extension, 7250 psi (500 bar, 50 MPa) |
| 246296 | 18 in (457 mm) Gun Extension, 7250 psi (500 bar, 50 MPa) |



10 in (25 cm)  
Heavy-Duty Extension  
232121

## HEAVY-DUTY 18" JETROLLER™

- Combines the speed of spray with the simplicity of rolling
- Fits 9-18" standard roller covers
- Coverts to a 42" spray wand - just remove the roller head!
- For use with 7/8 in (22 mm) thread guns or fittings

| PART # | DESCRIPTION   | LENGTH       |
|--------|---|--------------|
| 17U148 | Heavy-Duty Extension with Handle 7250 psi 500 bar                     | 42in (107cm) |
| 25D229 | Heavy-Duty Extension with Handle and 18 in JetRoller 7250 psi 500 bar | 42in (107cm) |



Fully adjustable handle for ultimate comfort

## 180° SPRAY NOZZLE

| PART # | DESCRIPTION  |
|--------|--|
| 246297 | 180° Spray Nozzle, 7/8-14 UNC-2B, 7250 psi (500 bar, 50 MPa) |



## GUNS SPLITTERS

| PART # | DESCRIPTION  |
|--------|--|
| 17V587 | 4-gun spray line manifold with ball valves, no independent flush |
| 262826 | Gun Splitter, 2 guns, with independent flush                     |
| 288729 | Gun Splitter, 2 guns, 5000 psi                                   |



## GUNS SWIVELS

| PART # | DESCRIPTION                         |
|--------|-------------------------------------|
| 17G980 | 1/2 in x 3/8 in 7250 PSI Gun Swivel |
| 189018 | 1/4 in x 1/4 in 7250 PSI Gun Swivel |
| 207948 | 1/2 in x 1/2 in 6500 PSI Z-Swivel   |
| 223340 | 1/4 in x 1/4 in 7250 PSI Z-Swivel   |





RAC XHD TIPS AND GUARDS

| PART # | DESCRIPTION  |
|--------|--|
| XHDxxx | XHD SwitchTips, Gray (Odd #); Maximum Working Pressure: 7250 psi (500 bar, 50.0 MPa) |
| XHD001 | XHD RAC Guard; Maximum Working Pressure: 7250 psi (500 bar, 50.0 MPa)                |
| XHD010 | Seal and Seal Kit (5-pack)   |

RAC XHD SWITCHTIPS (XHDXXX)

|                 |                 | ORIFICE SIZE |      |      |      |      |      |      |      |      |      |      |      |      |      |      |      |      |      |      |      |      |      |      |
|-----------------|-----------------|--------------|------|------|------|------|------|------|------|------|------|------|------|------|------|------|------|------|------|------|------|------|------|------|
|                 | IN              | MM           | .007 | .009 | .011 | .013 | .015 | .017 | .019 | .021 | .023 | .025 | .027 | .029 | .031 | .033 | .035 | .037 | .039 | .041 | .043 | .045 | .047 | .049 |
| FAN WIDTH       | 2-4             | (51-102)     | 107  | 109  | 111  | 113  | 115  | 117  | 119  | 121  |      |      |      |      |      |      |      |      |      |      |      |      |      |      |
|                 | 4-6             | (102-152)    |      | 209  | 211  | 213  | 215  | 217  | 219  | 221  |      | 225  | 227  | 229  | 231  |      | 235  |      | 239  |      |      |      |      |      |
|                 | 6-8             | (152-203)    | 307  | 309  | 311  | 313  | 315  | 317  | 319  | 321  | 323  | 325  | 327  | 329  | 331  | 333  | 335  | 337  | 339  | 341  | 343  | 345  | 347  |      |
|                 | 8-10            | (203-254)    |      | 409  | 411  | 413  | 415  | 417  | 419  | 421  | 423  | 425  | 427  | 429  | 431  | 433  | 435  | 437  | 439  | 441  | 443  | 445  | 447  | 449  |
|                 | 10-12           | (254-305)    |      | 509  | 511  | 513  | 515  | 517  | 519  | 521  | 523  | 525  | 527  | 529  | 531  | 533  | 535  | 537  | 539  | 541  | 543  | 545  | 547  | 549  |
|                 | 12-14           | (305-356)    |      | 609  | 611  | 613  | 615  | 617  | 619  | 621  | 623  | 625  | 627  | 629  | 631  | 633  | 635  | 637  | 639  | 641  | 643  | 645  | 647  | 649  |
|                 | 14-16           | (356-406)    |      |      | 711  | 713  | 715  | 717  | 719  | 721  | 723  | 725  | 727  | 729  | 731  | 733  | 735  | 737  | 739  | 741  | 743  | 745  | 747  | 749  |
|                 | 16-18           | (406-457)    |      |      |      | 813  | 815  | 817  | 819  | 821  | 823  | 825  | 827  | 829  | 831  | 833  | 835  | 837  | 839  | 841  | 843  |      | 847  |      |
|                 | 18-20           | (457-508)    |      |      |      |      |      |      |      |      | 923  |      | 927  |      | 931  | 933  | 935  | 937  | 939  |      |      |      |      |      |
|                 | FLOW RATE (GPM) |              |      | .05  | .09  | .12  | .18  | .24  | .31  | .38  | .47  | .57  | .67  | .77  | .90  | 1.03 | 1.17 | 1.31 | 1.47 | 1.63 | 1.8  | 1.98 | 2.17 | 2.37 |
| FLOW RATE (LPM) |                 |              | .20  | .33  | .49  | .69  | .91  | 1.17 | 1.47 | 1.79 | 2.15 | 2.54 | 2.96 | 3.42 | 3.90 | 4.42 | 4.98 | 5.56 | 6.18 | 6.83 | 7.51 | 8.23 | 8.98 | 9.76 |

|           |                 | ORIFICE SIZE |       |       |       |       |       |       |       |       |       |       |       |       |       |
|-----------|-----------------|--------------|-------|-------|-------|-------|-------|-------|-------|-------|-------|-------|-------|-------|-------|
|           | IN              | MM           | .051  | .053  | .055  | .057  | .059  | .061  | .063  | .065  | .067  | .069  | .071  | .075  | .081  |
| FAN WIDTH | 2-4             | (51-102)     |       |       |       |       |       |       |       |       |       |       |       |       |       |
|           | 4-6             | (102-152)    |       |       |       |       |       |       |       |       |       |       |       |       |       |
|           | 6-8             | (152-203)    | 351   |       | 355   |       |       |       |       |       |       |       |       |       |       |
|           | 8-10            | (203-254)    | 451   |       | 455   |       | 459   | 461   | 463   | 465   | 467   |       | 471   | 475   | 481   |
|           | 10-12           | (254-305)    | 551   | 553   | 555   | 557   |       | 561   |       | 565   | 567   |       | 571   | 575   |       |
|           | 12-14           | (305-356)    | 651   |       | 655   | 657   | 659   | 661   | 663   | 665   | 667   | 669   | 671   | 675   |       |
|           | 14-16           | (356-406)    | 751   | 753   | 755   |       |       | 761   |       |       | 767   |       | 771   |       |       |
|           | 16-18           | (406-457)    | 851   |       | 855   |       |       | 861   | 863   |       | 867   |       |       |       |       |
|           | 18-20           | (457-508)    |       |       |       |       |       |       |       |       |       |       |       |       |       |
|           | FLOW RATE (GPM) |              | 2.79  | 3.05  | 3.25  | 3.49  | 3.74  | 4.0   | 4.26  | 4.53  | 4.82  | 5.11  | 5.41  | 6.04  | 7.04  |
|           | FLOW RATE (LPM) |              | 10.57 | 11.41 | 12.29 | 13.20 | 14.14 | 15.12 | 16.13 | 17.17 | 18.24 | 19.34 | 20.48 | 22.85 | 26.66 |

XTREME-DUTY HIGH PRESSURE HOSE



H X X X X X

- Product Identifier:  
H= Hose
- Pressure Rating:  
4: 4500 psi    7: 7250 psi  
5: 5600 psi
- Hose Diameter:  
25: 1/4 in (6.4 mm)    50: 1/2 in (12.7 mm)  
38: 3/8 in (9.5 mm)
- Length:  
03: 3 ft (0.9 m)    1X: 100 ft (30.5 m)  
06: 6 ft (1.8 m)    1Y: 150 ft (45.7 m)  
10: 10 ft (3.0 m)    1Z: 200 ft (61 m)  
50: 25 ft (7.6 m)

Example:  
H53850 is a 5600 psi,  
3/8 in, 50 ft hose

CHOOSE THE RIGHT HOSE FOR THE JOB

| PART #                         | DESCRIPTION  |
|--------------------------------|--|
| Working Pressure               | 4500 psi (310 bar), 5600 psi (386 bar), or 7250 psi (500 bar)                                    |
| Temperature Rating (all sizes) | -40° to 180°F (-40° to 82°C)   |
| Chemical Resistance            | Hose cover resistant to a wide variety of solvents, acids, and bases                             |
| Weather Resistance             | Hose cover has outstanding resistance to oxygen, ozone, sunlight, and general weather conditions |
| Electrical Properties          | Conductive hose  |

3/4 IN XTREME-DUTY HIGH PRESSURE HOSE

| PART # | DESCRIPTION   |
|--------|---|
| H77550 | 3/4 in x 50 ft (6.4 mm x 15 m) FBE Xtreme-Duty High Pressure Hose; Maximum Working Pressure: 7250 psi (500 bar) |

ELBOW FITTING



| PART # | DESCRIPTION   |
|--------|---|
| 100840 | 7500 psi (517 bar) 1/4 npt (m) x 1/4 npt (f), Street 90 |
| 164259 | 7250 psi (500 bar) 3/8 npt (m) x 1/4 npt (f), Street 90 |
| 155699 | 7250 psi (500 bar) 3/8 npt (m) x 3/8 npt (f), Street 90 |
| 166999 | 7250 psi (500 bar) 1/2 npt (m) x 1/4 npt (f), Street 90 |
| 158683 | 7250 psi (500 bar) 1/2 npt (m) x 1/2 npt (f), Street 90 |
| 15M987 | 7250 psi (500 bar) 1/2 npt (m) x 1/2 npt (f), Street 60 |
| 166590 | 7250 psi (500 bar) 3/4 npt (m) x 3/4 npt (f), Street 90 |

NIPPLE



| PART # | DESCRIPTION  |
|--------|--|
| 503086 | 5000 psi (345 bar) 1 npt (m) x 1/2 npt (m), 2-1/8" Reducing, Hex SST       |
| 15R232 | 6600 psi (455 bar) 3/4 npt (m) x 1/2 npt (m), 2" Reducing, Hex SST         |
| 171439 | 6000 psi (455 bar) 1 npt (m) x 3/4 npt (m), 2" Reducing, Hex SST           |
| 166606 | 7000 psi (483 bar) 3/4 npt (m) x 3/8 npt (m), 4-1/2" Reducing, Hex         |
| 166846 | 7250 psi (500 bar) 1/4 npt (m) x 1/4 npsm (m), 1-3/16" Reducing, Hex SST   |
| 164672 | 7250 psi (500 bar) 3/8 npt (m) x 1/4 npsm (m), 2-3/4" Reducing, Hex        |
| 156849 | 7250 psi (500 bar) 3/8 npt (m) x 3/8 npt (m), 1-1/2" Reducing, Hex         |
| 156850 | 7250 psi (500 bar) 3/8 npt (m) x 3/8 npt (m), 2-1/2" Reducing, Hex         |
| 160790 | 7250 psi (500 bar) 3/8 npt (m) x 3/8 npt (m), 3-5/8" Reducing, Hex         |
| 158979 | 7250 psi (500 bar) 1/2 npt (m) x 3/8 npt (m), 2-3/4" Reducing, Hex         |
| 156877 | 7250 psi (500 bar) 1/2 npt (m) x 1/2 npt (m), 2-1/2" Reducing, Hex         |
| 157129 | 7250 psi (500 bar) 3/4 npt (m) x 3/8 npt (m), 3-1/4" Reducing, Hex         |
| 16R883 | 7250 psi (500 bar) 3/4 npt (m) x 1/2 npt (m), 2" Reducing, Hex SST         |
| 17J816 | 7250 psi (500 bar) 3/4 npt (m) x 3/4 npt (m), 2-1/2" Reducing, Hex SST     |
| 160032 | 7250 psi (500 bar) 3/4 npt (m) x 3/4 npt (m), 1-7/8" Reducing, Hex         |
| 175013 | 7250 psi (500 bar) 3/4 npt (m) x 3/4 npt (m), 2-1/2" Reducing, Hex         |
| 162449 | 7400 psi (510 bar) 1/2 npt (m) x 1/4 npt (m), 1-5/8" Reducing, Hex         |
| 159239 | 7400 psi (510 bar) 1/2 npt (m) x 3/8 npt (m), 1-5/8" Reducing, Hex         |
| 158491 | 7400 psi (510 bar) 1/2 npt (m) x 1/2 npt (m), 1-5/8" Reducing, Hex         |
| 162453 | 7500 psi (514 bar) 1/4 npt (m) x 1/4 npsm (m), 1-1/5" Reducing, Hex        |
| 156971 | 7500 psi (514 bar) 1/4 npt (m) x 1/4 npt (m), 1-3/8" Reducing, Hex         |
| 196181 | 7500 psi (514 bar) 1/4 npt (m) x 1/4 npsm (m), 1-1/5" Reducing, Hex Nickle |
| 164856 | 8000 psi (552 bar) 3/8 npt (m) x 1/4 npsm (m), 1-5/8" Reducing, Hex        |
| 192593 | 8000 psi (552 bar) 3/4 npt (m) x 1/2 npsm (m), 2-3/4" Reducing, Hex SST    |

UNIONS



| PART # | DESCRIPTION   |
|--------|---|
| 114339 | 5000 psi (345 bar), 1/4 npt (m) x 1/4 npsm (f), SST |
| 156172 | 5000 psi (345 bar), 3/4 npt (f) x 3/4 npt (f)       |
| 113344 | 5500 psi (380 bar), 3/4 npt (f) x 1/2 npt (m)       |
| 155653 | 6000 psi (455 bar), 1/2 npt (f) x 1/4 npt (f)       |
| 207152 | 7250 psi (500 bar), 3/8 npt (f) x 3/8 npsm (f)      |
| 155864 | 7250 psi (500 bar), 1/2 npt (m) x 1/2 npsm (f)      |
| 155865 | 7250 psi (500 bar), 1/2 npt (f) x 1/2 npsm (f)      |
| 156173 | 7400 psi (510 bar), 3/8 npt (f) x 3/8 npsm (f)      |
| 159153 | 7500 psi (514 bar), 3/8 npt (f) x 1/4 npt (f)       |
| 157705 | 7500 psi (514 bar), 3/8 npsm (f) x 1/4 npt (m)      |
| 155665 | 7500 psi (514 bar), 3/8 npt (f) x 3/8 npsm (f)      |
| 235208 | 7500 psi (514 bar), 3/8 npt (f) x 3/8 npsm (f), SST |
| 162505 | 7500 psi (514 bar), 1/2 npsm (f) x 3/8 npt (m),     |
| 158256 | 7500 psi (514 bar), 1/2 npt (m) x 3/8 npsm (f),     |
| 155570 | 10000 psi (690 bar), 1/4 npt (f) x 1/4 npsm (f)     |
| 156823 | 10000 psi (690 bar), 1/4 npt (m) x 1/4 npsm (f)     |

TEE FITTING



| PART # | DESCRIPTION  |
|--------|--|
| 16U937 | 6000 psi (455 bar) 1 in npt(m), 3/4 in npt (f), 3/8 in npt (f)   |
| 15R875 | 7250 psi (500 bar) 1/4 in npt(m), 1/4 in npt (f), 1/4 in npt (f) |
| 15R874 | 7250 psi (500 bar) 3/8 in npt(m), 3/8 in npt (f), 3/8 in npt (f) |
| 15R873 | 7250 psi (500 bar) 1/2 in npt(m), 1/2 in npt (f), 1/2 in npt (f) |
| 17B815 | 7250 psi (500 bar) 3/4 in npt(m), 3/4 in npt (m), 3/8 in npt (f) |

REDUCING BUSHINGS

| PART # | DESCRIPTION                                  |
|--------|--|
| 158586 | 6000 psi (455 bar) 1 npt (m) x 3/4 npt (f)   |
| 159841 | 7250 psi (500 bar) 3/8 npt (m) x 1/4 npt (f) |
| 100206 | 7250 psi (500 bar) 1/2 npt (m) x 1/4 npt (f) |
| 121433 | 7250 psi (500 bar) 1/2 npt (m) x 3/8 npt (f) |
| 16T315 | 7250 psi (500 bar) 3/4 npt (m) x 1/2 npt (f) |
| 15R067 | 7250 psi (500 bar) 1 npt (m) x 1/2 npt (f)   |
| 171439 | 7250 psi (500 bar) 1npt (m) x 3/4 npt (f)    |

COUPLING



| PART # | DESCRIPTION                                  |
|--------|--|
| 113093 | 7250 psi (500 bar) 1/4 npt (f) x 1/4 npt (f) |
| 162024 | 7250 psi (500 bar) 3/8 npt (f) x 3/8 npt (f) |
| 158581 | 7250 psi (500 bar) 1/2 npt (f) x 1/2 npt (f) |

COUPLING ADAPTER

| PART # | DESCRIPTION  |
|--------|--|
| 113093 | 7250 psi (500 bar) 3/8 npt (m) x 3/8 npt (f). Used for static Mixer 15E592 |
| 162024 | 7250 psi (500 bar) 3/8 npt (f) x 3/8 npsm (m)                              |
| 158581 | 7250 psi (500 bar) 3/8 npt (f) x 1/4 npt (m)                               |

PLUG



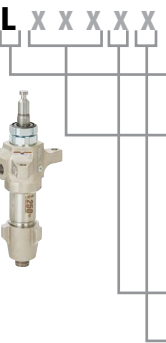
| PART # | DESCRIPTION                                    |
|--------|--|
| 100721 | 7250 psi (500 bar) 1/4 npt, hex, socket, short |
| 101754 | 7250 psi (500 bar) 3/8 npt, hex, socket, short |
| 100361 | 7250 psi (500 bar) 1/2 npt, hex, socket, short |

BALL VALVES



| PART # | DESCRIPTION   |
|--------|---|
| 102646 | 5000 psi (345 bar), 1/4 npt (m) x 1/4 npsm (f), SST |
| 102644 | 5000 psi (345 bar), 3/4 npt (f) x 3/4 npt (f)       |
| 218901 | 5500 psi (380 bar), 3/4 npt (f) x 1/2 npt (m)       |
| 239018 | 6000 psi (455 bar), 1/2 npt (f) x 1/4 npt (f)       |
| 248271 | 7250 psi (500 bar), 3/8 npt (f) x 3/8 npsm (f)      |
| 214037 | 7250 psi (500 bar), 1/2 npt (m) x 1/2 npsm (f)      |
| 210657 | 7250 psi (500 bar), 1/2 npt (f) x 1/2 npsm (f)      |
| 238635 | 7400 psi (510 bar), 3/8 npt (f) x 3/8 npsm (f)      |
| 210659 | 7500 psi (514 bar), 3/8 npt (f) x 1/4 npt (f)       |
| 235992 | 7500 psi (514 bar), 3/8 npsm (f) x 1/4 npt (m)      |
| 210658 | 7500 psi (514 bar), 3/8 npt (f) x 3/8 npsm (f)      |
| 262739 | 7500 psi (514 bar), 3/8 npt (f) x 3/8 npsm (f), SST |
| 262740 | 7500 psi (514 bar), 1/2 npsm (f) x 3/8 npt (m),     |
| 237303 | 7500 psi (514 bar), 1/2 npt (m) x 3/8 npsm (f),     |
| 237304 | 10000 psi (690 bar), 1/4 npt (f) x 1/4 npsm (f)     |

XTREME LOWERS



**Pump Identifier:**  
L= Lower

**Pump Size:**  
085: 85cc Xtreme  
115: 115cc Xtreme  
145: 145cc Xtreme  
180: 180cc Xtreme  
220: 220cc Xtreme  
250: 250cc Xtreme  
25H: 250cc for XL10000  
290: 290cc Xtreme  
29H: 290cc for XL10000

**Pump Rod/Cylinder Material:**  
C: Chrome  
M: Max Life\*  
\*145 180 220 and 290cc only

**Filter, Rupture Disk, Packings:**  
1: UHMWPE/Leather, No Filter  
2: UHMWPE/Leather, Integral Filter  
3: PTFE Packings, No Filter  
4: PTFE Packings, Integral Filter  
5: UHMWPE/Leather, Integral Filter w/Rupture Disk for King E-Series  
6: UHMWPE/Leather No Filter w/Rupture Disk for King E-Series

Example:  
L180C2 1 is a 180cc Pump with built in filter and UHMWPE/Leather packings and standard rod/cylinder

ENDURANCE LOWER

Used in Contractor King Sprayers. Uses standard Xtreme packing kits shown below.

| PART # | DESCRIPTION                      |
|--------|----------------------------------|
| 19D951 | 180cc 70:1 Contractor King Lower |
| 19D952 | 220cc 60:1 Contractor King Lower |
| 19D954 | 290cc 45:1 Contractor King Lower |

430CC DURA-FLO® LOWER

Used in with the K47xxx King Sprayers

| PART # | DESCRIPTION                             |
|--------|---|
| 24W644 | 430cc Dura-Flow lower XL45-430 sprayers |

PUMP REPAIR KITS

REPAIR KITS

UHMWPE/Leather packings. Ideal for abrasive applications. These are the standard in King sprayers.

| PART # | DESCRIPTION  |
|--------|--|
| 25D232 | 85cc Xtreme Pump Lower Repair Kit                      |
| 25D233 | 115cc Xtreme Pump Lower Repair Kit, Series G and older |
| 273267 | 115cc Xtreme Pump Lower Repair Kit, Series H and Newer |
| 25D234 | 145cc Xtreme Pump Lower Repair Kit                     |
| 25D235 | 180cc Xtreme and Endurance Pump Lower Repair Kit       |
| 25D236 | 220cc Xtreme and Endurance Pump Lower Repair Kit       |
| 25D237 | 250cc Xtreme Pump Lower Repair Kit                     |
| 25D238 | 290cc Xtreme and Endurance Pump Lower Repair Kit       |
| 222848 | 430cc Dura-Flo Pump Lower Repair Kit                   |

PTFE packings. Ideal for chemical resistance and higher temps.

| PART # | DESCRIPTION  |
|--------|--|
| 25D242 | 85cc Xtreme Pump Lower Repair Kit                      |
| 25D243 | 115cc Xtreme Pump Lower Repair Kit, Series G and older |
| 273268 | 115cc Xtreme Pump Lower Repair Kit, Series H and Newer |
| 25D244 | 145cc Xtreme Pump Lower Repair Kit                     |
| 25D245 | 180cc Xtreme and Endurance Pump Lower Repair Kit       |
| 25D246 | 220cc Xtreme and Endurance Pump Lower Repair Kit       |
| 25D247 | 250cc Xtreme Pump Lower Repair Kit                     |
| 25D248 | 290cc Xtreme and Endurance Pump Lower Repair Kit       |
| 222998 | 430cc Dura-Flo Pump Lower Repair Kit                   |

XTREME PACKING WRENCH

| PART # | DESCRIPTION                 |
|--------|-----------------------------|
| 16F615 | Xtreme Lower Packing Wrench |

CERAMIC BALLS

| XTREME LOWER | CERAMIC PISTON BALL | CERAMIC INLET BALL |
|--------------|---------------------|--------------------|
| 115*         | 111453              | 119264             |
| 145          | 111453              | 119264             |
| 180          | 111453              | 119264             |
| 220          | 118602              | 131271             |
| 290          | 117321              | 131271             |

\*115 cc Series H and Newer.

INLET BALL SPRING KITS

Use to improve change over rates in longer ball travel model. See manual 406527 NOTE: All XP Xtreme pumps include inlet springs

| KIT    | LOWER MODELS               |
|--------|----------------------------|
| 245190 | 115cc*, 145CC, 180cc sizes |
| 245191 | 220cc, 250cc, 290cc sizes  |

\*115 cc Series H and Newer.

SUCTION SETS

| PART # | DESCRIPTION  |
|--------|--|
| 25D515 | 5 gal (20 L) suction set for King Sprayers             |
| 20A584 | 55 gal (200 L)Suction set for King Sprayers            |
| 20F044 | 5 gal (20 L)suction set with 6' hose for King Sprayers |
| 24T757 | K47xxx sprayer Dura-Flo 430cc 5 gal (20L) suction set  |
| 288687 | 55 gal (200 L) suction set for Legacy Xtreme Sprayers  |
| 245176 | 5 gal (20 L) suction set for Legacy Xtreme sprayers    |
| 181072 | Double Wall inlet strainer                             |
| 238588 | Zinc Circulation Kit for Xtreme Loweres                |

HOPPERS AND FEED PUMPS\*

\*Feed pump kits For 55 gal (200 L) drums

| PART # | DESCRIPTION  |
|--------|--|
| 24X570 | Hopper, 10 gal (38 L) SST, for King and E-King                               |
| 25B619 | Hopper, 10 gal (38 L), SST, mounting hardware, for Contractor King           |
| 24Z834 | T3 CS feed pump kit, with air regulator                                      |
| 256276 | Monark 5:1 feed pump kit, with air & fluid connections                       |
| 256255 | Monark 5:1 feed pump and Twistork agitator kit, with air & fluid connections |
| 256433 | President 10:1 feed pump kit, with air & fluid connections                   |
| 217382 | 3/4" x 10' fluid hose, with 3/4" (m) fittings                                |
| 249024 | 1" inlet "Y" strainer w/ball valve   |
| 248970 | 3/4" inlet "Y" strainer w/ball valve   |

AGITATORS

| PART # | DESCRIPTION   |
|--------|---|
| 256274 | Twistork (Carbon Steel) drum length agitator kit w/air connections      |
| 235534 | Twistork (Stainless Steel) drum length agitator kit w/air connections   |
| 243340 | 5 gal pail agitator kit with lid and mounting hardware                  |
| 25A598 | Xtreme Duty Agitator, Bare  |
| 25A599 | Xtreme Duty Agitator on drum cover with handles                         |
| 25A600 | Xtreme Duty Agitator on drum cover with elevator                        |
| 25A601 | Xtreme Duty Agitator on drum cover with elevator and 5:1 Monark         |
| 25A602 | Xtreme Duty Agitator on drum cover with elevator and 5:1 Monark SST     |
| 25A603 | Xtreme Duty Agitator on drum cover with elevator and 10:1 President     |
| 25A604 | Xtreme Duty Agitator on drum cover with elevator and 10:1 President SST |
| 26C729 | Expanding Blade Agitator  |

DATATRAK

| PART # | DESCRIPTION  |
|--------|--|
| 24X550 | DataTrak kit for XL 3400/6500/10000 motors , no runaway solenoid   |
| 24X552 | DataTrak kit for XL 3400/6500/10000 motors , with runaway solenoid |



THROAT SEAL LIQUID (TSL)

| PART # | DESCRIPTION                         |
|--------|-------------------------------------|
| 206994 | Throat Seal Liquid, 8 oz bottle     |
| 206995 | Throat Seal Liquid, 1 quart bottle  |
| 206996 | Throat Seal Liquid, 1 gallon bottle |



AIR REGULATORS

| PART # | DESCRIPTION   |
|--------|---|
| 19D968 | Air Regulator w/filter for Contractor King                |
| 19D955 | Air Regulator w/filter and lubricator for Contractor King |
| 244841 | Air Lubricator kit for King cart models.                  |
| 288527 | Air-Assisted Airless Regulator Kit for King Sprayers      |
| 116635 | Air filter element  |
| 202659 | Air motor lubricator oil                                  |

FLUID FILTERS

| PART # | DESCRIPTION   |
|--------|---|
| 16V583 | External Paint Outlet Filter Kit                              |
| 19D955 | Poly Filter Support for integral and external filters         |
| 244841 | Carbon Steel Filter Support for integral and external filters |
| 224458 | 30 Mesh filter element - 2 Pack                               |
| 224459 | 60 Mesh filter element - 2 Pack                               |
| 224468 | 100 Mesh filter element - 2 Pack                              |
| 16G819 | Xtreme Filter Cap Wrench                                      |

HEATERS

| PART # | DESCRIPTION  |
|--------|--|
| 245848 | Viscon HP Haz-Loc 120 VAC, 2300 watts, 19.2 amps       |
| 245862 | Viscon HP Haz-Loc 200 VAC, 4000 watts, 20.0 amps       |
| 245863 | Viscon HP Haz-Loc 240 VAC, 4000 watts, 16.7 amps       |
| 246254 | Viscon HP Haz-Loc 400 VAC, 4000 watts, 10.5 amps       |
| 245864 | Viscon HP Haz-Loc 480 VAC, 4000 watts, 8.3 amps        |
| 245867 | Viscon HP Non-Hazardous 120 VAC, 2300 watts, 19.2 amps |
| 245868 | Viscon HP Non-Hazardous 200 VAC, 4000 watts, 20.0 amps |
| 245869 | Viscon HP Non-Hazardous 240 VAC, 4000 watts, 16.7 amps |
| 246276 | Viscon HP Non-Hazardous 400 VAC, 4000 watts, 10.5 amps |
| 245870 | Viscon HP Non-Hazardous 480 VAC, 4000 watts, 8.3 amps  |
| 24W248 | Viscon HF Haz-Loc 240 VAC, 5400 watts, 22.5 amps       |
| 26C476 | Viscon HF Haz-Loc 480 VAC, 5400 watts, 11.3 amps       |
| 24P016 | Viscon HF Non-Hazardous 240 VAC, 5400 watts, 22.5 amps |
| 26C475 | Viscon HF Non-Hazardous 480 VAC, 5400 watts, 11.3 amps |

HEATER MOUNTING KIT

| PART # | DESCRIPTION                             |
|--------|---|
| 17V573 | Heater Mounting Kit for King and E-King |
| 18F785 | Heater Mounting Kit for Contractor King |

HAZ-LOC POWER CABLES

| PART # | DESCRIPTION   |
|--------|---|
| 24Z267 | Cable assembly, with 1 gland 8m*                        |
| 24Z268 | Cable assembly, with 1 gland 15m*                       |
| 24Z269 | Cable assembly, with 1 gland 30m*                       |
| 24Z271 | Cable assembly, with 2 glands 8m*                       |
| 24Z272 | Cable assembly, with 2 glands 15m*                      |
| 24Z273 | Cable assembly, with 2 glands 30m*                      |
| 121171 | Cable insert for non-hazardous locations only, no cable |

LEARN MORE AT GRACO.COM/ACCESSORIES





| MODEL                      | Part Number                     | CONTRACTOR KING 45:1  | CONTRACTOR KING 60:1  | CONTRACTOR KING 70:1  |
|----------------------------|---------------------------------|---|---|---|
|                            |                                 | 279005 Contractor King 45:1 (bare)<br>279006 Contractor King 45:1 (complete)<br>279007 Contractor King 45:1 (big 150) | 279010 Contractor King 60:1 (bare)<br>279011 Contractor King 60:1 (complete)<br>279012 Contractor King 60:1 (big 150) | 279013 Contractor King 70:1 (bare)<br>279014 Contractor King 70:1 (complete)<br>279022 Contractor King 70:1 (big 150) |
| TECHNICAL SPECIFICATIONS   | Air Motor                       | XL 6500cc   | XL 6500cc   | XL 6500cc   |
|                            | Pump Displacement               | 290cc   | 220cc   | 180cc   |
|                            | Pump Type                       | Endurance   | Endurance   | Endurance   |
|                            | Packing                         | UHMWPE/Leather  | UHMWPE/Leather  | UHMWPE/Leather  |
|                            | Maximum Input Air Pressure Line | 100 psi (7 bar)   | 100 psi (7 bar)   | 100 psi (7 bar)   |
|                            | Max Working Pressure            | 4500 psi (310 bar)  | 6000 psi (414 bar)  | 7250 psi (500 bar)  |
|                            | Max Flow Rate @ 60 Cycles/min   | 4.6 gpm (17.4 lpm)  | 3.4 gpm (12.9 lpm)  | 2.9 gpm (11 lpm)  |
|                            | Compressor                      | User-supplied air compressor required. Minimum compressor rating of 50 dfm at 100 psi per 1 gpm sprayed               | User-supplied air compressor required. Minimum compressor rating of 60 dfm at 100 psi per 1 gpm sprayed               | User-supplied air compressor required. Minimum compressor rating of 70 dfm at 100 psi per 1 gpm sprayed               |
| COMPLETE PACKAGES INCLUDED | Weight                          | 145 lb  | 140 lb  | 135 lb  |
|                            | Gun                             | Silver Plus   | Silver Plus HP  | Silver Plus HP  |
|                            | Tip                             | XHD519  | XHD519  | XHD519  |
|                            | Hoses                           | Xtreme Duty 4500 psi 3/8 in hose, 1/4 in whip   | Xtreme Duty 7250 psi 3/8 in hose, 1/4 in whip   | Xtreme Duty 7250 psi 3/8 in hose, 1/4 in whip   |
| MANUAL                     | Sprayer Manual                  | 3A9121  | 3A9121  | 3A9121  |
|                            | Materials Sprayed               | Primers, polyurethane top coats, Zinc coatings, Glass filled epoxies  | High Solids, Mastics, Epoxies, Coal Tar, Silicone   | High Solids, Mastics, Epoxies, Coal Tar, Silicone   |

| MODEL                      | Part Number                   | KING XL30-220  | KING XL40-180  |
|----------------------------|-------------------------------|--|--|
|                            |                               | K30FH0 XL30 Heavy Duty Cart (bare)<br>K30FW0 XL30 Wall Mount (bare)<br>K30FH1 XL30 Heavy Duty Cart (complete)<br>K30FW1 XL30 Wall Mount (complete) | K40FH0 XL40 Heavy Duty Cart (bare)<br>K40FW0 XL40 Wall Mount (bare)<br>K40FH1 XL40 Heavy Duty Cart (complete)<br>K40FW1 XL40 Wall Mount (complete) |
| TECHNICAL SPECIFICATIONS   | Air Motor                     | XL 3400cc  | XL 3400cc  |
|                            | Pump Displacement             | 220cc  | 180cc  |
|                            | Pump Type                     | Xtreme   | Xtreme   |
|                            | Packing                       | UHMWPE/Leather   | UHMWPE/Leather   |
|                            | Max input Air Pressure        | 100 psi (7 bar)  | 100 psi (7 bar)  |
|                            | Max Working Pressure          | 3150 psi (217 bar)   | 3800 psi (262 bar)   |
|                            | Max Flow Rate @ 60 Cycles/min | 3.4 gpm (12.9 lpm)   | 2.9 gpm (11 lpm)   |
|                            | Compressor                    | User-supplied air compressor required. Minimum compressor rating of 40 dfm at 100 psi per 1 gpm sprayed  | User-supplied air compressor required. Minimum compressor rating of 45 dfm at 100 psi per 1 gpm sprayed  |
| COMPLETE PACKAGES INCLUDED | Gun                           | XTR5+  | XTR5+  |
|                            | Tip                           | XHD519   | XHD519   |
|                            | Hoses                         | Xtreme Duty 4500 psi 3/8 in hose, 1/4 in whip  | Xtreme Duty 4500 psi 3/8 in hose, 1/4 in whip  |
| MANUAL                     | Sprayer Manual                | 3A5422   | 3A5422   |
|                            | Materials Sprayed             | Primers, polyurethane top coats, Zinc coatings, Glass filled epoxies   | Primers, polyurethane top coats, Zinc coatings, Glass filled epoxies   |

AIR-ASSISTED AIRLESS XL3400 PACKAGES:

| PART # | MODEL   | INCLUDES  |
|--------|---|---|
| 287975 | King XL30-220 Air-assisted Airless spray package* | Package includes atomization air regulator, 1/4 in. x 50 ft. (15m) spray line, 1/4 in. x 50 ft. airline, G40 spray gun with LTX tip of choice |
| 287976 | King XL40-180 Air-assisted Airless spray package* | Package includes atomization air regulator, 1/4 in. x 50 ft. (15m) spray line, 1/4 in. x 50 ft. airline, G40 spray gun with LTX tip of choice |



|                           |                                 | KING XL45-290   | KING XL60-220  | KING XL70-180   | KING XL90-145  |
|---------------------------|---------------------------------|---|--|---|--|
| MODEL                     | Part Number                     | K45FH0 XL45 Heavy Duty Cart (bare)<br>K45NH0 XL45 Heavy Duty Cart No Filter (bare)<br>K45FL0 XL45 Light Weight Cart (bare)<br>K45FW0 XL45 Wall Mount (bare)<br>K45FH1 XL45 Heavy Duty Cart (Complete)<br>K45NH1 XL45 Heavy Duty Cart No Filter (complete)<br>K45FW1 XL45 Wall Mount (complete)<br>K45MH2 XL45 Heavy Duty Cart Max Life (complete) | K60FH0 XL60 Heavy Duty Cart (bare)<br>K60NH0 XL60 Heavy Duty Cart No Filter (bare)<br>K60FL0 XL60 Lightweight Cart (bare)<br>K60FW0 XL60 Wall Mount (bare)<br>K60FH1 XL60 Heavy Duty Cart (complete)<br>K60NH1 XL60 Heavy Duty Cart No Filter (complete)<br>K60FL1 XL60 Lightweight Cart (complete)<br>K60FW1 XL60 Wall Mount (complete) | K70FH0 XL70 Heavy Duty Cart (bare)<br>K70NH0 XL70 Heavy Duty Cart No Filter (bare)<br>K70FL0 XL70 Lightweight Cart (bare)<br>K70FW0 XL70 Wall Mount (bare)<br>K70FH1 XL70 Heavy Duty Cart (complete)<br>K70NH1 XL70 Heavy Duty Cart No Filter (complete)<br>K70FL1 XL70 Lightweight Cart (complete)<br>K70FW1 XL70 Wall Mount (complete)<br>K70MH2 XL70 Heavy Duty Cart Max Life (complete) | K90FH0 XL90 Heavy Duty Cart (bare)<br>K90FH1 XL90 Heavy Duty Cart (complete)                           |
|                           |                                 |   |  |   |  |
| TECHNICAL SPECIFICATIONS  | Air Motor                       | XL 6500cc   | XL 6500cc  | XL 6500cc   | XL 6500cc  |
|                           | Pump Displacement               | 290cc   | 220cc  | 180cc   | 145cc  |
|                           | Pump Type                       | Xtreme  | Xtreme   | Xtreme  | Xtreme   |
|                           | Packing                         | UHMWPE/Leather  | UHMWPE/Leather   | UHMWPE/Leather  | UHMWPE/Leather   |
|                           | Maximum Input Air Pressure Line | 100 psi (7 bar)   | 100 psi (7 bar)  | 100 psi (7 bar)   | 80 psi (5.5 bar)   |
|                           | Max Working Pressure            | 4500 psi (310 bar)  | 6000 psi (414 bar)   | 7250 psi (500 bar)  | 7250 psi (500 bar)   |
|                           | Max Flow Rate @ 60 Cycles/min   | 4.6 gpm (17.4 lpm)  | 3.4 gpm (12.9 lpm)   | 2.9 gpm (11 lpm)  | 2.3 gpm (8.7 lpm)  |
|                           | Compressor                      | User-supplied air compressor required. Minimum compressor rating of 50 cfm at 100 psi per 1 gpm sprayed   | User-supplied air compressor required. Minimum compressor rating of 60 cfm at 100 psi per 1 gpm sprayed  | User-supplied air compressor required. Minimum compressor rating of 70 cfm at 100 psi per 1 gpm sprayed   | User-supplied air compressor required. Minimum compressor rating of 75 cfm at 80 psi per 1 gpm sprayed |
|                           | Gun                             | XTR5+   | XTR7+  | XTR7+   | XTR7+  |
|                           | Tip                             | XHD519  | XHD519   | XHD519  | XHD519   |
| COMPLETE PACKAGES INCLUDE | Hoses                           | Xtreme Duty 4500 psi 3/8 in hose, 1/4 in whip   | Xtreme Duty 7250 psi 3/8 in hose, 1/4 in whip  | Xtreme Duty 7250 psi 3/8 in hose, 1/4 in whip   | Xtreme Duty 7250 psi 3/8 in hose, 1/4 in whip  |
|                           |                                 |   |  |   |  |
| MANUAL                    | Sprayer Manual                  | 3A5422  | 3A5422   | 3A5422  | 3A5422   |
|                           | Materials Sprayed               | Primers, Polyurethane top coats, Zinc coatings, thin coatings   | Primers, Polyurethane top coats,, Glass filled Epoxies   | High Solids, Mastics, Epoxies, Coal Tar   | High Solids, Mastics, Epoxies, Coal Tar  |

KING HEAVY FLUID PACKAGES

| PART # | MODEL   | INCLUDES  |
|--------|---|---|
| 26C891 | King XL70-180 Heavy-fluid 2 gun spray package | XHF™ Gun, 1/2 in x 50 ft Hoses, 3/8 in x 6 ft Whip Hoses, XHD429 Spray Tips, 10 gal SST Hopper      |
| 26C349 | King XL70-180 Heavy-fluid Big 250 package     | XHF Gun, 3/4 in x 200 ft Hose, 1/2 in x 50 ft Hose, Whip Hose, XHD531 Spray Tips, 10 gal SST Hopper |



|                           |                                 | KING XL45-430   | KING XL70-290  | KING XL80-250   |
|---------------------------|---------------------------------|---|--|---|
| MODEL                     | Part Number                     | K47FH0 XL45 Heavy Duty Cart (bare)<br>K47FH1 XL45 Heavy Duty Cart (complete)                            | K71FH0 XL70 Heavy Duty Cart (bare)<br>K71NH0 XL70 Heavy Duty Cart No Filter (bare)<br>K71FH1 XL70 Heavy Duty Cart (complete)<br>K71NH1 XL70 Heavy Duty Cart No Filter (complete) | K82FH0 XL80 Heavy Duty Cart (bare)<br>K82FH1 XL80 Heavy Duty Cart (complete)                            |
|                           |                                 |   |  |   |
| TECHNICAL SPECIFICATIONS  | Air Motor                       | XL 10000cc  | XL 10000cc   | XL 10000cc  |
|                           | Pump Displacement               | 430cc   | 290cc  | 250cc   |
|                           | Pump Type                       | Dura Flo  | Xtreme   | Xtreme  |
|                           | Packing                         | UHMWPE/Leather  | HMWPE/Leather  | UHMWPE/Leather  |
|                           | Maximum Input Air Pressure Line | 100 psi (7 bar)   | 100 psi (7 bar)  | 90 psi (7 bar)  |
|                           | Max Working Pressure            | 4500 psi (310 bar)  | 7250 psi (500 bar)   | 7250 psi (500 bar)  |
|                           | Max Flow Rate @ 60 Cycles/min   | 6.7 gpm (25.4 lpm)  | 4.6 gpm (17.4 lpm)   | 4.0 gpm (15.2 lpm)  |
|                           | Compressor                      | User-supplied air compressor required. Minimum compressor rating of 50 cfm at 100 psi per 1 gpm sprayed | User-supplied air compressor required. Minimum compressor rating of 75 cfm at 100 psi per 1 gpm sprayed  | User-supplied air compressor required. Minimum compressor rating of 775 cfm at 90 psi per 1 gpm sprayed |
|                           | Gun                             | XTR5+   | XTR7+  | XTR7+   |
|                           | Tip                             | XHD519  | XHD519   | XHD519  |
| COMPLETE PACKAGES INCLUDE | Hoses                           | Xtreme Duty 4500 psi 3/8 in hose, 1/4 in whip   | Xtreme Duty 7250 psi 3/8 in hose, 1/4 in whip  | Xtreme Duty 7250 psi 3/8 in hose, 1/4 in whip   |
|                           |                                 |   |  |   |
| MANUAL                    | Sprayer Manual                  | 334645  | 334645   | 334645  |
|                           | Materials Sprayed               | Primers, polyurethane top coats, Zinc coatings, Glass filled epoxies                                    | High Solids, Mastics, Epoxies, Coal Tar, Silicone  | High Solids, Mastics, Epoxies, Coal Tar, Silicone   |

KING HEAVY FLUID PACKAGES

| PART # | MODEL   | INCLUDES   |
|--------|---|--|
| 24X593 | King XL70-290 Heavy-fluid spray package       | XHF Gun, 3/4 in x 50 ft Hoses, 1/2 in x 25 ft Whip Hoses, XHD429 Spray Tips, 10 gal SST Hopper       |
| 24X594 | King XL80-250 Heavy-fluid spray package       | XHF Gun, 3/4 in x 50 ft Hoses, 1/2 in x 25 ft Whip Hoses, XHD429 Spray Tips, 10 gal SST Hopper       |
| 26C892 | King XL70-290 Heavy-fluid 2 gun spray package | 2 XHF Guns, 1/2 in x 50 ft Hoses, 3/8 in x 6 ft Whip Hoses, XHD431 Spray Tips, 10 gal SST Hopper     |
| 26C350 | King XL70-290 Heavy-fluid Big 250 package     | XHF Gun, 3/4 in x 200 ft Hoses, 1/2 in x 50 ft Hose, Whip Hose, XHD531 Spray Tips, 10 gal SST Hopper |



|                          |                        | HAZARDOUS LOCATIONS: ATEX, IECEX, FM-US, FM-CA   |  | NON-HAZARDOUS LOCATIONS:   |  |
|--------------------------|------------------------|--|--|--|--|
|                          |                        | E50  | E60  | E60  | E70  |
| MODEL                    | Part Number            | 273252 E50 Heavy Duty Cart, (Complete)<br>273253 E50 Heavy Duty Cart, (Bare)<br>273254 E50 Lightweight Cart, (Complete)<br>273255 E50 Lightweight Cart, (Bare)<br>273256 E50 Wall Mount, (Complete)<br>273257 E50 Wall Mount, (Bare) | 273246 E60 Heavy Duty Cart, (Complete)<br>273247 E60 Heavy Duty Cart, (Bare)<br>273248 E60 Lightweight Cart, (Complete)<br>273249 E60 Lightweight Cart, (Bare)<br>273250 E60 Wall Mount, (Complete)<br>273251 E60 Wall Mount, (Bare) | 273752 E60 Heavy Duty Cart, (Complete)<br>273753 E60 Heavy Duty Cart, (Bare)<br>273754 E60 Lightweight Cart, (Complete)<br>273755 E60 Lightweight Cart, (Bare)<br>273756 E60 Wall Mount, (Complete)<br>273757 E60 Wall Mount, (Bare) | 273746 E70 Heavy Duty Cart, (Complete)<br>273747 E70 Heavy Duty Cart, (Bare)<br>273748 E70 Lightweight Cart, (Complete)<br>273749 E70 Lightweight Cart, (Bare)<br>273750 E70 Wall Mount, (Complete)<br>273751 E70 Wall Mount, (Bare) |
|                          |                        | *Complete packages contain 5 Gallon Suction Set, XTR+ Spray Gun, 50 in x 3/8 ft hose, and 6 ft x 1/4 in whip hose  |  | *Complete packages contain 5 Gallon Suction Set, XTR+ Spray Gun, 50 in x 3/8 ft hose, and 6 ft x 1/4 in whip hose  |  |
| TECHNICAL SPECIFICATIONS | Pump Displacement      | 145cc  | 115cc  | 145cc  | 115cc  |
|                          | Pump Type              | Xtreme   | Xtreme   | Xtreme   | Xtreme   |
|                          | Packing                | UHMWPE/Leather   | UHMWPE/Leather   | UHMWPE/Leather   | UHMWPE/Leather   |
|                          | Maximum Stall Pressure | 4500 psi (310 bar, 31.0 MPa)   | 6000 psi 415 bar, 41.5 MPar)   | 6000 psi (415 bar, 41.5 MPa)   | 7250 psi (500 bar, 50.0 MPa)   |
|                          | Maximum Tip Size       | 0.021 in (0.53 mm)   | 0.023 in (0.58 mm)   | 0.023 in (0.58 mm)   | 0.023 in (0.58 mm)   |
|                          | Flow Rate @ Pressure   | 0.6 gpm (2.3 lpm) @ 4000 psi (276 bar, 27.6 MPa)   | 0.7 gpm (2.7 lpm) @ 5000 psi (350 bar, 35.0 MPa)   | 0.6 gpm (2.3 lpm) @ 4000 psi (276 bar, 27.6 MPa)   | 0.7 gpm (2.7 lpm) @ 5000 psi (350 bar, 35.0 MPa)   |
|                          | Input Power            | Single Phase 50/60Hz: - 100 - 120V (25A); or 200 - 240V (15A)  |  | Single Phase 50/60Hz: - 100 - 120V (30A); or 200 - 240V (20A)  |  |
|                          | Operating Temp Range   | 23°F to 120°F (-5°C to 50°C)   |  | 23°F to 120°F (-5°C to 50°C)   |  |
|                          | Sound Pressure         | <80 dB (A)   |  | <80 dB (A)   |  |
|                          |                        |  |  |  |  |

E-KING HEAVY FLUID PACKAGES

| PART # | MODEL                   | INCLUDES   |
|--------|-------------------------|--|
| 273262 | E60 Haz-Loc Package     | XHF Gun, 1/2 in x 50 ft Hose, 3/8 in x 6 ft Whip Hose, 10 Gal SST Hopper |
| 273264 | E50 Haz-Loc Package     | XHF Gun, 1/2 in x 50 ft Hose, 3/8 in x 6 ft Whip Hose, 10 Gal SST Hopper |
| 273762 | E70 Non Haz-Loc Package | XHF Gun, 1/2 in x 50 ft Hose, 3/8 in x 6 ft Whip Hose, 10 Gal SST Hopper |
| 273764 | E60 Non Haz-Loc Package | XHF Gun, 1/2 in x 50 ft Hose, 3/8 in x 6 ft Whip Hose, 10 Gal SST Hopper |





**MADE IN THE USA**  
FOR OVER 60 YEARS



# THE FOUNDATION OF GRACO QUALITY

When we say manufactured, we mean real manufacturing—it's what we do every day in our manufacturing facilities. Selected raw metals and materials arrive at our factory and we cut, machine, grind, hone, and otherwise transform the raw components into the individual parts of the sprayer.



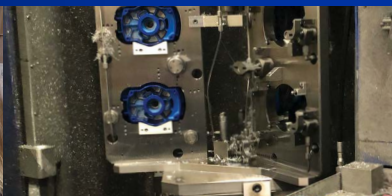
No other spray equipment company retains total control over as many of the individual part manufacturing processes as Graco. While others outsource the manufacturing of a large number of components to third parties, and even outsource subassembly processes in some cases, Graco remains committed to doing nearly all of these activities ourselves and within our own facilities. This is how we can ensure the highest quality and consistency in both performance and life.

***Learn more at [graco.com/madeintheusa](https://graco.com/madeintheusa)***

## DESIGNED



## MANUFACTURED



## ASSEMBLED



## SUPPORTED



**SCAN TO LEARN MORE ABOUT  
GENUINE GRACO PARTS**



Genuine Graco Parts



## SPRAY WITH CONFIDENCE

### Industry-Leading Warranty Protection

Every Graco electric is backed by the industry's best warranty coverage.

#### WARRANTY

Graco warrants all equipment manufactured by Graco and bearing its name to be free from defects in material and workmanship on the date of sale by an authorized Graco distributor to the original purchaser for use. With the exception of any special, extended, or limited warranty published by Graco, Graco will, for a period of twelve (12) months from the date of sale, repair or replace any part of the equipment determined by Graco to be defective. This warranty applies only when the equipment is installed, operated and maintained in accordance with Graco's written recommendations.

This warranty does not cover, and Graco shall not be liable for general wear and tear, or any malfunction, damage, or wear caused by faulty installation, misapplication, abrasion, corrosion, inadequate or improper maintenance, negligence, accident, tampering, or substitution of non-Graco component parts. Nor shall Graco be liable for malfunction, damage or wear caused by the incompatibility of Graco equipment with structures, accessories, equipment or materials not supplied by Graco, or the improper design, manufacture, installation, operation or maintenance of structures, accessories, equipment or materials not supplied by Graco.



#### FINISH EVERY JOB, EVERY TIME

Downtime is costly. With the Endurance Advantage Program, you'll never need to worry about it again. Depending on the sprayer you purchase:

**Receive up to 70% OFF the list price of an Endurance Pump**  
**OR — Receive a FREE Repair Kit if you'd rather repack your own pump.**



Every Graco purchase comes with A+ Customer Service.

Questions?  
Call (844) 241-9499

**For more information visit [graco.com/contractor](https://graco.com/contractor)**