



MARK *XT*[™] HD 3-IN-1

Introducing Graco's NEW Xtreme Torque[™]
Lineup of Professional Mark HD Sprayers



PROVEN QUALITY. LEADING TECHNOLOGY.



INTRODUCING

BREAKTHROUGH XT TECHNOLOGY

PATENT PENDING

NEW FOR 2024

UP TO 10X QUIETER WITH THE
NEW SOUND OF QUALITY™

UNRIVALED FINISH QUALITY WITH
THE WORLD'S STEADIEST RUNNING
PRESSURE

SELECTABLE PERFORMANCE MODES™

LONGEST LIFE BEFORE SERVICE

FASTEST SERVICE ON JOBSITE

PUMP WEAR PREVENTION

FASTEST CLEANING
USING LESS FLUID

LOWEST COST OF OWNERSHIP

EXPERIENCE AIRLESS LIKE NEVER BEFORE

XTREME TORQUE MOTOR

Experience a new level of performance with the first motor ever designed specifically for airless spray and made by Graco.

THE SOUND OF QUALITY

Advanced design eliminates multistage gear trains and reduces motor speed by 90% and noise by up to 10X.

RAPID-RESPONSE™ CONTROL

Delivers the world's steadiest running pressure. Dial-in 10 psi increments with the widest performance range in the industry (50-3,300 psi).

SELECTABLE PERFORMANCE WITH THE PUSH OF A BUTTON

Low Pressure Mode: Optimized performance range to eliminate overspray and improve finish.

High Pressure Mode: Offers maximum performance for extended hose lengths and difficult to atomize materials.

ENDURANCE VORTEX® PISTON PUMPS WITH PROCONNECT®

Auto-rotating vortex rod balances load and prolongs pump life—proven ProConnect replacement system eliminates downtime.

LED DIGITAL DISPLAY

Features a bright, easy-to-read LED display. See the performance from across the room!

TURBOCLEAN™

Efficiently cleans 3X faster using half the fluid, significantly reducing recycling costs.

WATCHDOG™ PUMP PROTECTION

Intelligent auto-shutoff feature activates when the sprayer runs out of paint, safeguarding the pump and maintaining consistent performance.

OPTIMIZED FOR THICKER MATERIALS

Direct Immersion Vortex Pump puts the pump inlet right in the material eliminated the suction tube.

Oversized fluid passages and hoses allow for more fluid flow area and less pressure loss when spraying thick coatings.



BREAKTHROUGH FEATURES ACROSS THE ENTIRE XT LINEUP



NEW FOR 2024

FEATURING
***BREAKTHROUGH
XTREME TORQUE MOTOR*** PATENT PENDING

**1ST MOTOR EVER DESIGNED BY
GRACO SPECIFICALLY FOR AIRLESS SPRAY**

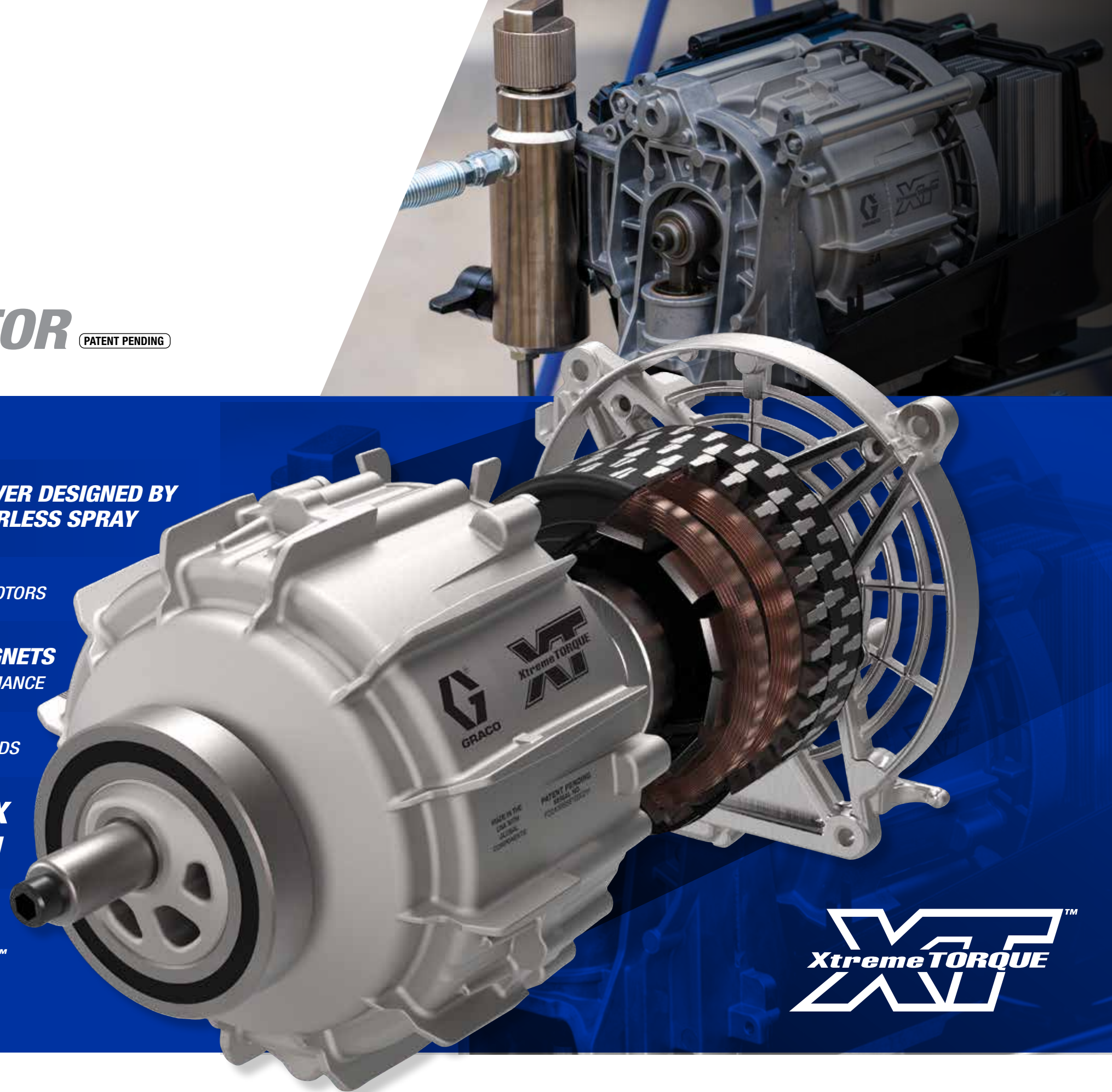
15X MORE TORQUE THAN TRADITIONAL MOTORS

8X MORE MAGNETS
DELIVERS RAPID ACCELERATION AND SMOOTH PERFORMANCE

90% LOWER RUNNING SPEEDS

**MONITORS PRESSURE 60X
PER MOTOR REVOLUTION**

**UP TO 10X QUIETER OPERATION DELIVERS
THE NEW SOUND OF QUALITY™**



XtremeTORQUE™



D E S I G N E D , E N G I N E E R E D & M A N U F A C T U R E D B Y G R A C O

FEATURING

THE WORLD'S WIDEST & STEADIEST RUNNING PRESSURE

EXPERIENCE NEXT-GENERATION PERFORMANCE

SPRAY MORE JOBS WITH THE WORLD'S STEADIEST PRESSURE CONTROL

- Rapid-Response™ Control eliminates pressure fluctuations by continuously monitoring pressure— 60X per motor revolution
- Instantly adjusts motor speed to eliminate 75% of pressure fluctuations for a Perfect Airless Finish™

WIDEST PERFORMANCE RANGE — FROM 50 TO 3,300 PSI

- Offers the largest operating pressure range providing full control and maximum productivity
- Flexible for more applications — coatings, hose lengths and tip sizes to meet every application

PUSH-BUTTON PERFORMANCE

- Two selectable performance modes offer unique performance levels to boost efficiency on every job
- Features a bright easy-to-read LED Display — see performance from across the room

MAXIMIZE UPTIME

- TurboClean™ cleans the pump 3X faster with 1/2 the fluid
- WatchDog™ Pump Protection automatically shuts down the sprayer when out of material, preventing premature wear

BRING ON SAVINGS WITH SELECTABLE PERFORMANCE



PATENT PENDING

(L) LOW PRESSURE PERFORMANCE MODE

50 - 2,000 PSI

- Optimized performance range to eliminate overspray and improve finish with RAC X™ LP SwitchTips™
- Adjustable in 10 psi increments — achieve extreme control down to 50 psi



(H) HIGH PRESSURE PERFORMANCE MODE

500 - 3,300 PSI

- Ideal for difficult to atomize materials, extended hose lengths or during cold running conditions
- Use this mode for the best finish with any RAC® SwitchTip



SEE THE XT DIFFERENCE

graco.com/MarkXT



FEATURING

UNRIVALED PUMP DURABILITY & PERFORMANCE

SPRAYS 3X MORE GALLONS THAN THE NEAREST COMPETITOR

- Endurance piston pumps are made using the highest grade materials to deliver the industry's longest life
- Proven proprietary V-MAX Blue™ packings individually supported on chrome piston rod to deliver reliability you can count on

ENDURANCE VORTEX TECHNOLOGY ON ALL MODELS

- Delivers the longest pump life by automatically rotating piston rod to extend pump life
- Virtually eliminates side loading

MORE COATING APPLIED PER PISTON STROKE

- Up to 80% longer piston stroke than competitive models — enhances flow and boosts performance
- Extended piston stroke design increases wear surface and improves hard part life

ELIMINATE DOWNTIME WITH PROCONNECT JOBSITE SERVICEABILITY



Loosen the Clamping Nut



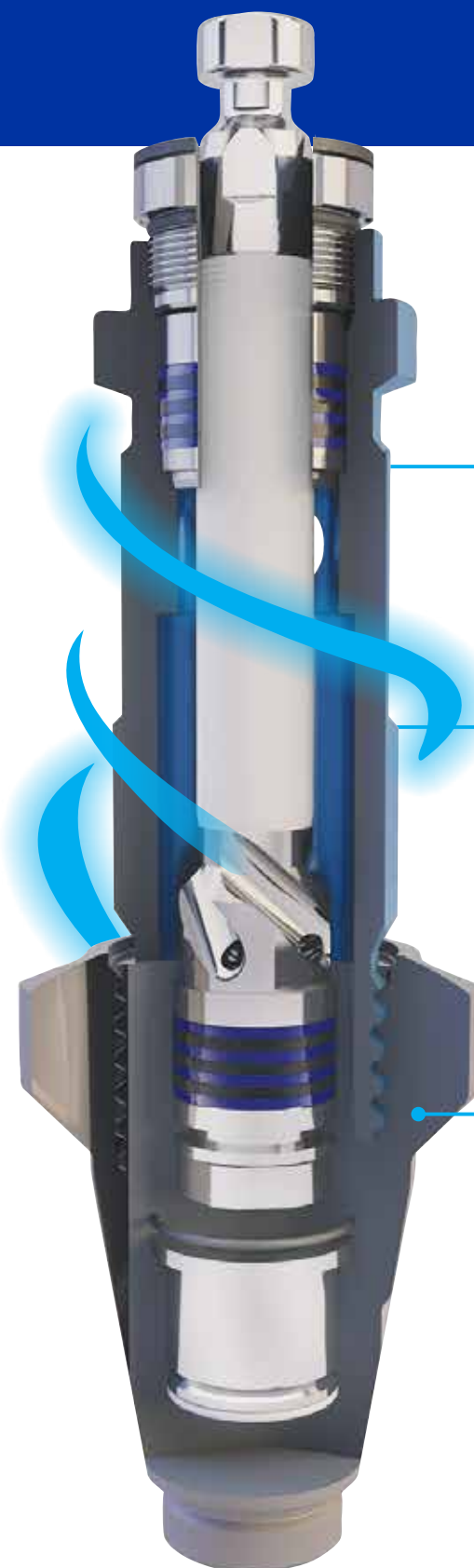
Open Door & Remove Pump



Remove Hose & Suction Tube



Eliminate Downtime with ProConnect On-the-Job Pump Replacement — now included on ALL XT Models



VORTEX TECHNOLOGY

Rotating rod for extended life

360° WEAR SURFACE

- Even loading delivers the longest pump life

HELICAL PISTON ROD DESIGN

- Delivers high-velocity flow to rotate pump rod as you spray
- The piston rod slowly turns — balancing wear and extending life

OVERSIZED MAXFLOW 2 INLET

- Offers 4X more flow than typical pumps and pack-out resistance.

PROCONTRACTOR **XT**

UPGRADE TO PROCONTRACTOR™ FOR 6X LONGER PUMP LIFE

- Proprietary piston and sleeve delivers 6X more gallons pumped between repacks
- Included on all ProContractor Series models



Endurance Chromex™ Pump
Lasts 2X longer than competing pumps

Endurance Vortex MaxLife Pump
6X longer between repacks

Endurance Vortex MaxLife Extreme Pump
Extends pump rod life by 3X — delivering the industry's lowest cost of ownership



XT STANDARD SERIES

EVERDAY RELIABILITY FOR LARGER JOBS

Larger coating jobs demand the proven quality and performance of Graco's Standard Series large electric sprayers to deliver a job well done, every time.



MARK XT STANDARD SERIES MODELS:

NEW UP TO 10X QUIETER OPERATION

Xtreme Torque Motor Technology

- Experience a new level of performance with the first motor ever designed specifically for airless spray

NEW WORLDS STEADIEST RUNNING PRESSURE

RapidResponse Control

- Dial in 10 psi increments with the widest performance range (50-3,300 psi)

NEW PUSH BUTTON PERFORMANCE

Selectable Performance Modes

- Low Pressure Mode: Optimized performance range to eliminate overspray and improve finish
- High Pressure Mode: Offers maximum performance for extended hose lengths and difficult to atomize materials

NEW SEE PERFORMANCE FROM ACROSS THE ROOM

- Easy-to-Read LED Digital Display Maintain peak performance in any condition with a clear and visible display

THE LONGEST LASTING DRIVE

Advantage Drive™

Hardened steel gears provide extremely quiet operation and a lifetime warranty

FASTEST JOBSITE SERVICEABILITY

ProConnect Replacement System

- Eliminate Costly Downtime
- Quickly Exchange pump in minutes on jobsite

NEW INDUSTRIES FASTEST CLEANING

TurboClean Cleaning System

- High-Velocity Fluid Flow Cleans The Pump 3x Faster Using ½ The Fluid

NEW PUMP WEAR PREVENTION

WatchDog Pump Protection

- Prevents Pump Damage If The Material Supply Is Too Low By Shutting Off The Pump Automatically

EASY OUT PUMP FILTER

- Large Inside out filtration process ensures a quality finish



THE WORLD'S WIDEST OPERATING AND STEADIEST PRESSURE RANGE

- **RAPID-RESPONSE SYSTEM** features the most expansive pressure range (50-3,300 psi) for unmatched control
- Instantly responds for the steadiest pressure and Perfect Airless Finish™ by ensuring seamless motor transitions during pump changeovers



ONE SPRAYER, MANY APPLICATIONS

- **Paint:** sprays the full range of paints and primers
- **Heavy Coatings:** fireproofing, waterproofing, vapor-barrier, and more
- **Texture:** Level 5, Skim Coat, Orange Peel*, Splatter* and Knock-Down* (*with air atomizer kit)

FAST CLEANING NOW EVEN FASTER!

- **TURBOCLEAN™** Turbo Clean efficiently cleans 3X faster using half the fluid



MARK IV XT INCLUDES:
Flex Plus Gun
RAC X 425 SwitchTip and Guard
BlueMax™ II 3/8 x 50 ft Airless hose

NEW INCREASED PERFORMANCE

LARGE ELECTRICS	MAX TIP SIZE	MAX GPM	PART #	PISTON PUMP TECHNOLOGY
Mark IV XT	.033	1.2	19F722	Endurance Vortex
Mark V XT	.039	1.5	19F723	Endurance Vortex

MARK XT

PROCONTRACTOR SERIES



INCLUDES ALL STANDARD SERIES FEATURES

PLUS:



READY TO SPRAY WITH:
Heavy-Duty Blue Texture Gun
RAC X 427 and 531 SwitchTip and Guard
BlueMax II 3/8 x 50 ft (6.4mm x 15m) Airless Hose

- NEW

SUPERIOR PUMP LIFE
Endurance Vortex MaxLife and MaxLife Extreme Piston Pumps
 - Innovative MaxLife Technology last 6x longer between repacks —included on Mark IV XT ProContractor models
 - MaxLife Extreme Technology extends rod life 3X longer delivering the industry's lowest cost of ownership — included on Mark V XT ProContractor models
- NEW

EASY HOSE MANAGEMENT
QuikReel™ Hose Management System
 - Deploy and rewind up to 300 feet of hose in seconds without twisting, kinking or coiling
 - Use only the hose you need — the rest stays on the reel
- NEW

BLUELINK™ JOBSITE MANAGEMENT SYSTEM

BLUE+LINK

 - Know your job's progress, locate your sprayers and maximize uptime with this innovative technology that is free to use
- NEW

NEVER HAVE A FLAT AGAIN!
Flat Proof Tires
 - Tires can't be punctured by nails, screws or other sharp debris
- NEW

DURABLE FILTRATION
Crushproof Inlet Strainer
 - Stands up to harsh impacts to maintain flow through filter

NEW INCREASED PERFORMANCE

PROCONTRACTOR LARGE ELECTRICS	MAX TIP SIZE	MAX GPM	PART #	PISTON PUMP TECHNOLOGY
Mark V XT ProContractor	.039"	1.5	19F724	Endurance Vortex MaxLife Extreme



XT ACCESSORIES:
Upgrade your sprayer to maximize your productivity!

PART #	DESCRIPTION
25V145	Modular QuikReel Kit for Mark IV and Mark V XT
287987	25 Gallon Texture Hopper
17E687	Flat Proof Tires for Mark V XT - order 2
15V573	Crushproof Inlet Strainer for Mark IV and Mark V XT
20B432	SmartDisplay XT • Upgrade any XT Sprayer with Bluelink job-site management system



ACCESSORIES TO HELP YOU WORK FASTER AND MORE PRODUCTIVELY
Ideal for knockdown, orangepeel, splatter coats, and decorative finishes.



NEW **AIR ATOMIZER KIT WITH WIDETEX™**

- Match or create a wide variety of spray patterns with easy to change fluid nozzles.
- Delivers round or fan spray pattern with WideTex spray tips.
- Eliminates fatigues associated with circular gun movement.



INTRODUCING THE 2024 BRUSHLESS MARK XT HD 3-IN-1 LINEUP

THE **XT** ADVANTAGE

	NEW Mark IV XT-V XT Standard Series	NEW Mark V XT ProContractor Series
XT Motor with Reduced Drive Train	✓	✓
Up To 10X Quieter	✓	✓
Rapid-Response Pressure Control	✓	✓
Selectable Performance Modes with LED Display	✓	✓
Endurance Vortex® Pump	✓	✓
Piston and Sleeve Construction	Chromex™ / Hardened SST	MaxLife Extreme (Mark V XT)
ProConnect®	✓	✓
TurboClean™	✓	✓
WatchDog™	✓	✓
QuikReel™ Hose Management System		✓
SmartDisplay XT™ with BlueLink™		✓
CrushProof Inlet Strainer		✓
Flat Proof Tires		✓

	Mark IV <i>XT</i>	Mark V <i>XT</i>
MAXIMUM TIP SIZE	0.033"	0.039"
MAXIMUM PSI (BAR)	3,300 (227)	3,300 (227)
MAXIMUM GPM (LPM)	INCREASED FLOW 1.20 (4.5)	INCREASED FLOW 1.50 (5.6)
XTREME TORQUE MOTOR (HP)	2.3	2.7
WEIGHT LB (KG)	88 (40) Standard	101 (46) Stand
GUN SUPPORT:		
1 GUNS	0.033"	0.039"
2 GUNS	0.025"	0.029"
3 GUNS	0.019"	0.023"



MODEL		19F722 - Standard Hi-Boy	19F723- Standard Hi-Boy	19F724- ProContractor
PUMP	TYPE	Endurance™ Vortex	Endurance Vortex	Endurance Vortex
	ROD	Chromex™	Chromex	MaxLife Extreme
	SLEEVE	Hardened SST	Hardened SST	MaxLife
	REMOVAL	ProConnect	ProConnect	ProConnect
FEATURES	XTREME TORQUE™ MOTOR	✓	✓	✓
	RAPID-RESPONSE™ PRESSURE CONTROL	✓	✓	✓
	TURBOCLEAN™	✓	✓	✓
	WATCHDOG™ PUMP PROTECTION	✓	✓	✓
	BLUELINK™ MANAGEMENT	Modular Accessory	✓	✓
	EASYOUT FILTER™ (60 MESH)	✓	✓	✓
	QUIKREEL™ HOSE MANAGEMENT	Modular Accessory	Modular Accessory	✓
	FLATPROOF TIRES	Modular Accessory	Modular Accessory	✓
	CRUSHPROOF INLET STRAINER	Modular Accessory	Modular Accessory	✓
INCLUDES	GUN	Flex Plus	Heavy-Duty Blue Texture	Heavy-Duty Blue Texture
	HOSE	3/8 in x 50 ft (9.5 mm x 15m) BlueMax II Airless Hose	3/8 in x 50 ft (9.5 mm x 15m) BlueMax II Airless Hose	3/8 in x 50 ft (9.5 mm x 15m) BlueMax II Airless Hose
	TIPS	RAC X LTX 425	RAC X LTX 427 and 531	RAC X LTX 427 and 531
	FILTER	60 Mesh Easy Out	60 Mesh Easy Out	60 Mesh Easy Out
MANUAL	OPERATION AND PARTS	3B0070	3B0070	3B0070
	PUMP	3A9391	3A9391	3A9391



SEE THE XT DIFFERENCE
graco.com/MarkXT



ABOUT GRACO

PROVEN QUALITY. LEADING TECHNOLOGY.

Founded in 1926, Graco is a world leader in fluid handling systems and components. Graco products move, measure, control, dispense and apply a wide range of fluids and viscous materials used in vehicle lubrication, commercial and industrial settings.

The company's success is based on its unwavering commitment to technical excellence, world-class manufacturing and unparalleled customer service. Working closely with qualified distributors, Graco offers systems, products and technology that set the quality standard in a wide range of fluid handling solutions. Graco provides equipment for spray finishing, protective coating, paint circulation, lubrication, and dispensing sealants and adhesives, along with power application equipment for the contractor industry. Graco's ongoing investment in fluid management and control will continue to provide innovative solutions to a diverse global market.

GRACO LOCATIONS

MAILING ADDRESS

P.O. Box 1441
Minneapolis, MN 55440-1441
Tel: +612-623-6000
Fax: +612-623-6777

AMERICAS

MINNESOTA
Worldwide Headquarters
Graco Inc.
88-11th Avenue N.E.
Minneapolis, MN 55413

EUROPE

BELGIUM
European Headquarters
Graco N.V.
Industrieterrein-Oude Bunders
Slakweidestraat 31
3630 Maasmechelen,
Belgium
Tel: +32 89 770 700
Fax: +32 89 770 777

ASIA PACIFIC

AUSTRALIA
Graco Australia Pty Ltd.
Suite 17, 2 Enterprise Drive
Bundoora, Victoria 3083
Australia
Tel: +61 3 9468 8500
Fax: +61 3 9468 8599

CHINA (AP Headquarters)
Graco Fluid Equipment
(Shanghai) Co., Ltd
Building 7, NO. 1 - 2, Wenshui
Road 299
Jing'an District, Shanghai
200436, P.R.China
Tel: +86 512 6260 5711
Fax: +86 21 6495 0077

INDIA

Graco India Pvt Ltd
Plot No 295, Udyog Vihar Phase-IV
Gurugram - 122015 (Haryana)
India
Phone: +91 124 661 0200
Fax: +91 124 661 0201

JAPAN

Graco K.K.
1-27-12 Hayabuchi
Tsuzuki-ku
Yokohama City, Japan 2240025
Tel: +81 45 593 7300
Fax: +81 45 593 7301

KOREA

Graco Korea Inc.
38, Samsung 1-ro 1-gil,
Hwaseong-si, Gyeonggi-do.
18449
Republic of Korea
Tel : +82 31 8015 0961
Fax : +82 31 613 9801

SALES/ DISTRIBUTION/ SERVICE

Call today for product information or to request a demonstration.

CHINA/SOUTH EAST ASIA: + 86 512 62605711

INDIA: +91 124 6610200

AUSTRALIA and NEW ZEALAND: +61 3 9468 8500

Or visit us at www.graco.com



EVERY GRACO PRODUCTS COMES WITH A+ CUSTOMER SERVICE.