



Working Together for Growth

As experts in the markets who supply and receive regular training, our Graco partners offer focused guidance in finding the right solution for each application. Dedicated technical resources provide the necessary support to get started with any of our products. Their professional service includes maintenance and repair, reducing downtime to a minimum. All Graco distributors are specifically chosen for their high quality service meeting Graco standards for their particular area of work.

Graco partners can count on almost 100 years of experience in fluid handling.

Texture Finishing

A textured finish can sometimes be preferred over a smooth one, due to aesthetic preference or cost/m².

P. 10-11

Smooth Finishing

A widely adopted and popular way of finishing interior walls is to apply (a) relatively thin layer(s) of a plaster skim coat. After being applied, the coating is troweled to a smooth and even finish. An airless application is the way to save time, using either the dry powder or a ready-mix compound which typically comes in bags or buckets.

P. 07-08

1

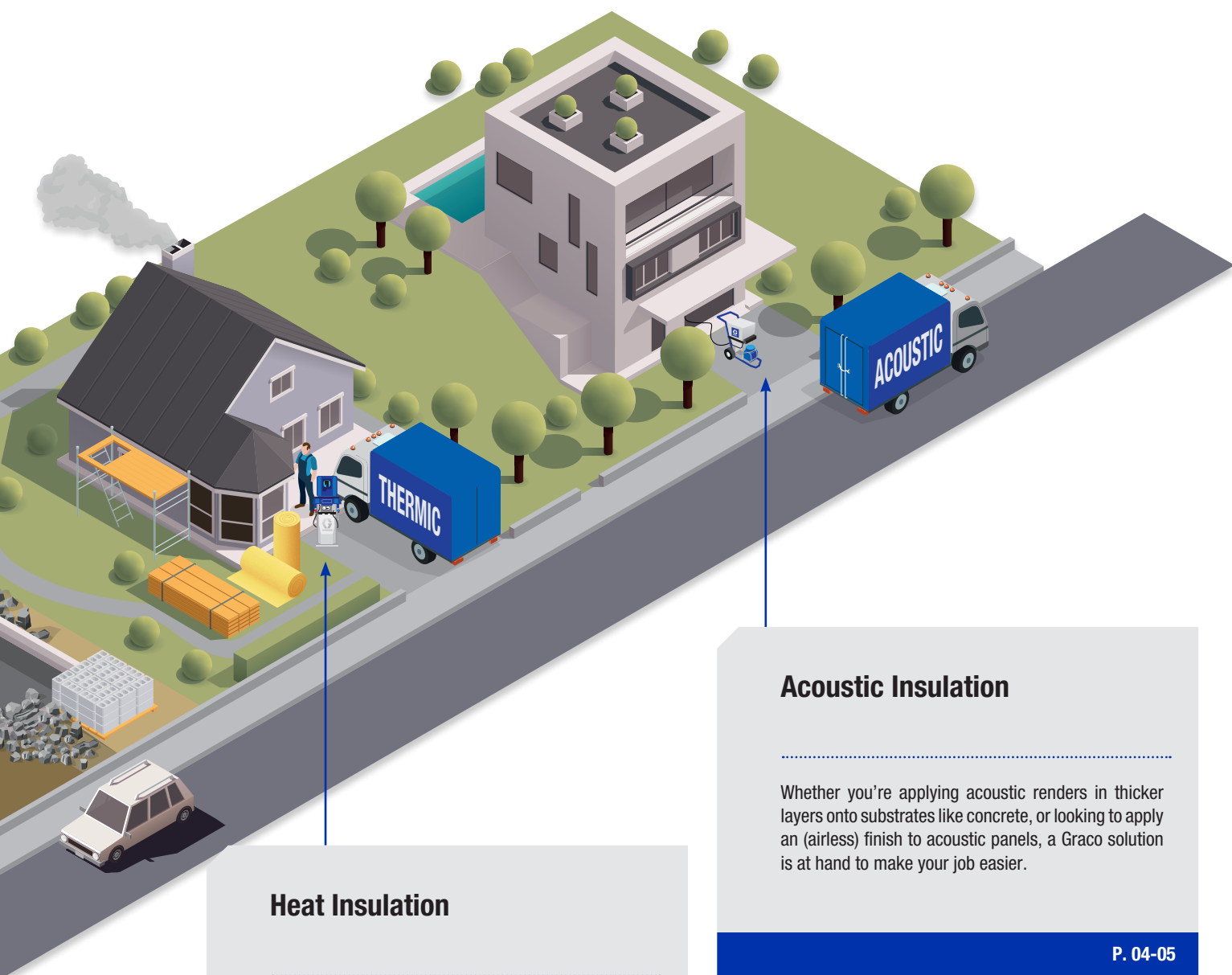
INSULATION

| | |
|---------------------------|-------|
| Acoustic Insulation | 04-05 |
| Heat Insulation | 06-07 |

2

FINISHING

| | |
|-------------------------|-------|
| Smooth Finishing | 08-09 |
| Texture Finishing | 10-11 |



Heat Insulation

Exterior insulation and finish system, or EIFS refers to a multi-layered exterior finish that provides exterior walls with an insulating, water-resistant surface.

P. 06-07

Acoustic Insulation

Whether you're applying acoustic renders in thicker layers onto substrates like concrete, or looking to apply an (airless) finish to acoustic panels, a Graco solution is at hand to make your job easier.

P. 04-05

1. Acoustic Insulation

Whether you're applying acoustic renders in thicker layers onto substrates like concrete, or looking to apply an (Airless) finish to acoustic panels, a Graco solution is at hand to make your job easier.

Acoustic renders often contain aggregates or fibres to absorb sound, and therefore require application systems that can handle these aggregates.

Acoustic finish coats are applied to sound-absorbing panels. Although they also contain fibres to muffle sound, these are typically shorter in length. These materials are often formulated to enable application with Airless systems.



ACOUSTIC FINISH**Airless****Mark Max™**

The small-diameter hose on this compact airless sprayer makes it easy to apply acoustic finish coats to walls and ceilings. Operating at a maximum pressure of 230 bar, you're guaranteed to get the finish you're looking for.

- ▶ Up to 70 meter hose possible
- ▶ Applies acoustic finish coats without a compressor

ACOUSTIC FINISH & RENDER**Airless / Air-Assisted****T-Max™**

If you're looking for versatility, the T-Max is what you want. Setting it to Airless mode allows you to apply thin finish coats with a max. pressure of 65 bar, or you can spray renders with an aggregate size up to 1 mm by hooking up a compressor to your sprayer.

- ▶ Thin layers of acoustic finish in airless mode
- ▶ Thicker render coats up to 1 mm aggregate with a compressor
- ▶ Up to 30 meter hose possible

ACOUSTIC RENDER**Air-Assisted****RTX™**

A powerful all-in-1 machine. Compact and easy to move around and with a built-in compressor to handle acoustic renders with an aggregate size up to 3 mm.

- ▶ Apply thicker render coats up to 3 mm in aggregate
- ▶ Compact unit with built-in compressor
- ▶ Up to 10 meter hose possible

1. Heat Insulation

Spray foam insulation (or PUR) is formed using a combination of two composite materials, polyol resin and iso-cyanate. The two materials chemically react, causing the combined substance to expand and harden. During the insulation process, both materials are simultaneously ejected from the tip of a spray gun, allowing them to expand and form a layer of spray foam on a surface.

Spray foam is a premium thermal insulation material as it expands to 120 times its initial volume, it fills cavities of any shape, and adheres tenaciously to most construction materials. It provides a continuous, protective air barrier that helps to minimise air leakage and intrusion, and provides exceptional heat transfer reduction.

Exterior insulation and finish system, or EIFS refers to a multi-layered exterior finish that provides exterior walls with an insulating, water-resistant surface. Energy efficiency, together with aesthetics and creative freedom make EIFS a popular insulation system around the world. Typically, EIFS consists of 6 layers, of which the liquid ones can be applied using Graco equipment.

1. An **optional water-resistant barrier** that covers the substrate
2. **Adhesive** to attach insulation board to the supporting structure (in some cases mechanical fasteners may be used)
3. **Insulation board** (usually EPS) secured to the exterior wall surface substrate, most often with adhesive
4. **Base coat**, an acrylic or polymer-based cement applied to the top of the insulation, then reinforced with fibreglass reinforcement mesh
5. **Reinforcement mesh**, embedded in the base coat material
6. **Finish**, a textured finish coat that is decorative and protective.



PUR**Electric, Hydraulic or Air Driven****Reactor™ 2**

Plural-component proportioning system for spraying Polyurethane Foam (PUR). Ideal for insulation of wall cavities, floors, attics, cellars and crawl spaces.

- ▶ Consistent temperature control, even when spraying at maximum flow rates
- ▶ Excellent durability and performance with high duty cycles
- ▶ Monitor, track and collect all spray data

EIFS**Air-Assisted****RTX™**

Basic model for occasional EIFS jobs, with a compact design that makes the RTX easy to move around on residential job sites. No need for an external compressor as this is included in the sprayer. The base coat and finish coat can be sprayed up to an aggregate size of 3 mm.

- ▶ 230V system with built-in compressor
- ▶ Plug-and-play: easy control
- ▶ Compact and easy to move around

EIFS**Air-Assisted****ToughTek™**

Designed for stucco or EIFS materials, the Graco ToughTek S340 pump easily handles base coats, finish coats and air/water-resistant barrier materials - and delivers these in a smooth, steady flow.

- ▶ Plug-and-play – the ToughTek F340e pump plugs into a standard 230V or 120V wall outlet
- ▶ Variable speed control – dial in the exact speed needed
- ▶ Optional remote start/stop switch – lets the nozzle operator start or stop the pump

2. Smooth Finishing

A widely adopted and popular way of finishing interior walls is to apply (a) relatively thin layer(s) of a plaster skim coat. After being applied, the coating is troweled to a smooth and even finish. An airless application is the way to save time, whether using the dry powder or with a ready-mix compound which typically comes in bags or buckets.

Gypsum or mineral-based powders are often still applied by hand. Nevertheless, an accurate water-mixing ratio and method allows for airless application as well. These materials are typically used on more porous substrates that require more filling.

Ready-mix polymer modified finish materials come in various containers – usually bags and buckets. Depending on the substrate, the formula can vary from heavy viscous materials to fill more porous substrates such as concrete or limestone blocks, to liquid for very thin skim coats on drywall.



POWDER & READY MIX

Air-Assisted

**T-Max™**

Versatile as to materials, the T-Max is most suitable if you're looking for a system that can also handle powder materials. As such, it is the ideal solution to fill porous substrates such as concrete slab ceilings.

- ▶ Up to 30 % savings possible compared to manual work
- ▶ Up to 30 meter hose possible
- ▶ Applies almost all plasters without a compressor
- ▶ Spray decorative materials using an external compressor

POWDER & READY MIX

Airless

**APX™**

An all-in-one system that includes a hopper and can handle a wide range of ready-mix materials and the occasional powder job. With the highest output per m², the APX is the powder champion of these 3 wall-finishing solutions.

- ▶ More m² in a day
- ▶ Spend less time and money on maintenance and repairs
- ▶ No more expensive downtime!
- ▶ Get your unit onto, around and off the job site much faster

LIGHT READY MIX

Airless

**Mark Max™**

Combine with an external hopper, or use direct suction from a bucket. The easiest to move around on your job site and versatile in application, as you can also use this sprayer for paint jobs to complete the finish.

- ▶ Up to 30 % savings possible compared to manual work
- ▶ Up to 70 meter hose possible
- ▶ Applies almost all plasters without a compressor

| | T-Max | APX | Mark Max |
|--------------------|---|--|---|
| MATERIALS | Powder: **** Ready-Mix: **** Paint: * | Powder: *** Ready-Mix: ***** Paint: ** | Powder: * Ready-Mix: ***** Paint: ***** |
| HOSE LENGTH | ** | *** | ***** |
| MOBILITY | *** | *** | ***** |
| EFFICIENCY | *** | ***** | ***** |

2. Textured Finishing

A textured finish can sometimes be preferred over a smooth one, due to aesthetic preference or cost/m². This finish typically requires the addition of air to the atomisation process (contrary to “Airless only” application methods).

Materials vary from powder to ready-mix, with or without aggregates.

A textured finish with **smooth materials** is obtained by adding an air atomiser to the gun of your airless unit. The air breaks up the materials into larger droplets and flings them onto the interior substrate. The operator can then choose various methods to obtain specific finishes, ranging from leaving the finish as-is to adding texture using a trowel.

Materials containing aggregates also require air to atomise, but cannot be applied using an Airless system. Other solutions are preferred.



ELECTRIC DRIVE**Up to 1 mm aggregate****T-Max™****GRAIN SIZE:** Up to 1 mm aggregate.

Versatile as to materials, the T-Max is most suitable if you're looking for a system that can handle both airless materials and decorative finishes. Hook up an external compressor and you'll be able to spray materials with up to 1mm in aggregate.

- ▶ Applies almost all plasters with (Air-Assisted) or without (Airless) compressor

ELECTRIC DRIVE**Up to 3 mm aggregate****RTX™****GRAIN SIZE:** Up to 3 mm aggregate.

The RTX 5500 Series is configured to tackle interior jobs of all sizes. Ideal for larger residential and commercial contractors needing a compact yet powerful texture sprayer capable of handling a wide variety of materials.

- ▶ Loam texture renders and finish coats
- ▶ Base coats, pre-mixed and powder
- ▶ EIFS top coats, pre-mixed and powder
- ▶ Interior and exterior finish plasters
- ▶ Acoustic plasters

ELECTRIC DRIVE**Up to 8 mm aggregate****FastFinish
Hopper/Compressor****GRAIN SIZE:** Up to 8 mm aggregate.

The FastFinish hopper gun can be delivered separately, or with the Graco FastFinish tank-less compressor for max. material output and max. air.

Sprays acoustics, waterproofing materials, fireproofing and most common render or texture materials.

- ▶ Spray it all! Consistent finish and maximum efficiency
- ▶ Lid keeps materials fresh & avoids spills
- ▶ Durable aluminum gun body easily handles job-site abuse
- ▶ Trigger for easy flow-rate adjustment
- ▶ Air adjustment for complete pattern control

ABOUT GRACO

Founded in 1926, Graco is a world leader in fluid handling systems and components. Graco products move, measure, control, dispense and apply a wide range of fluids and viscous materials used in vehicle lubrication, commercial and industrial settings. The company's success is based on its unwavering commitment to technical excellence, world-class manufacturing and unparalleled customer service. Working closely with qualified distributors, Graco offers systems, products and technology that set the quality standard in a wide range of fluid handling solutions. Graco provides equipment for spray finishing, protective coating, paint circulation, lubrication, and dispensing sealants and adhesives, along with power application equipment for the contractor industry. Graco's ongoing investment in fluid management and control will continue to provide innovative solutions to a diverse global market.

GRACO HEADQUARTERS

► WORLDWIDE HEADQUARTER

Graco Inc.

8th – 11th Avenue N.E.
Minneapolis, M.N. 55413
United States of America
Tel: +1 612 623 6000

► EMEA HEADQUARTER

Graco Distribution BVBA

Industrieterrein Oude Bunders
Slakweidestraat 31
3630 Maasmechelen, Belgium
Tel: +32 89 770 700

► ASIA PACIFIC HEADQUARTER

Graco Hong Kong Ltd

Shanghai Representative Office
Building 7
1029 Zongshan Road South
Huangpu District
Shanghai 200011
The People's Republic of China
Tel: +86 21 649 50088

► SOUTH AND CENTRAL AMERICA HEADQUARTER

Graco Uruguay - Montevideo

GFEC Uruguay Free – Zone
WTC Free Zone
Dr. Luis Bonavita 1294
Office 1504
Montevideo, Uruguay 11300
Tel: +598 2626 3111

Discover your Solution



www.graco.com