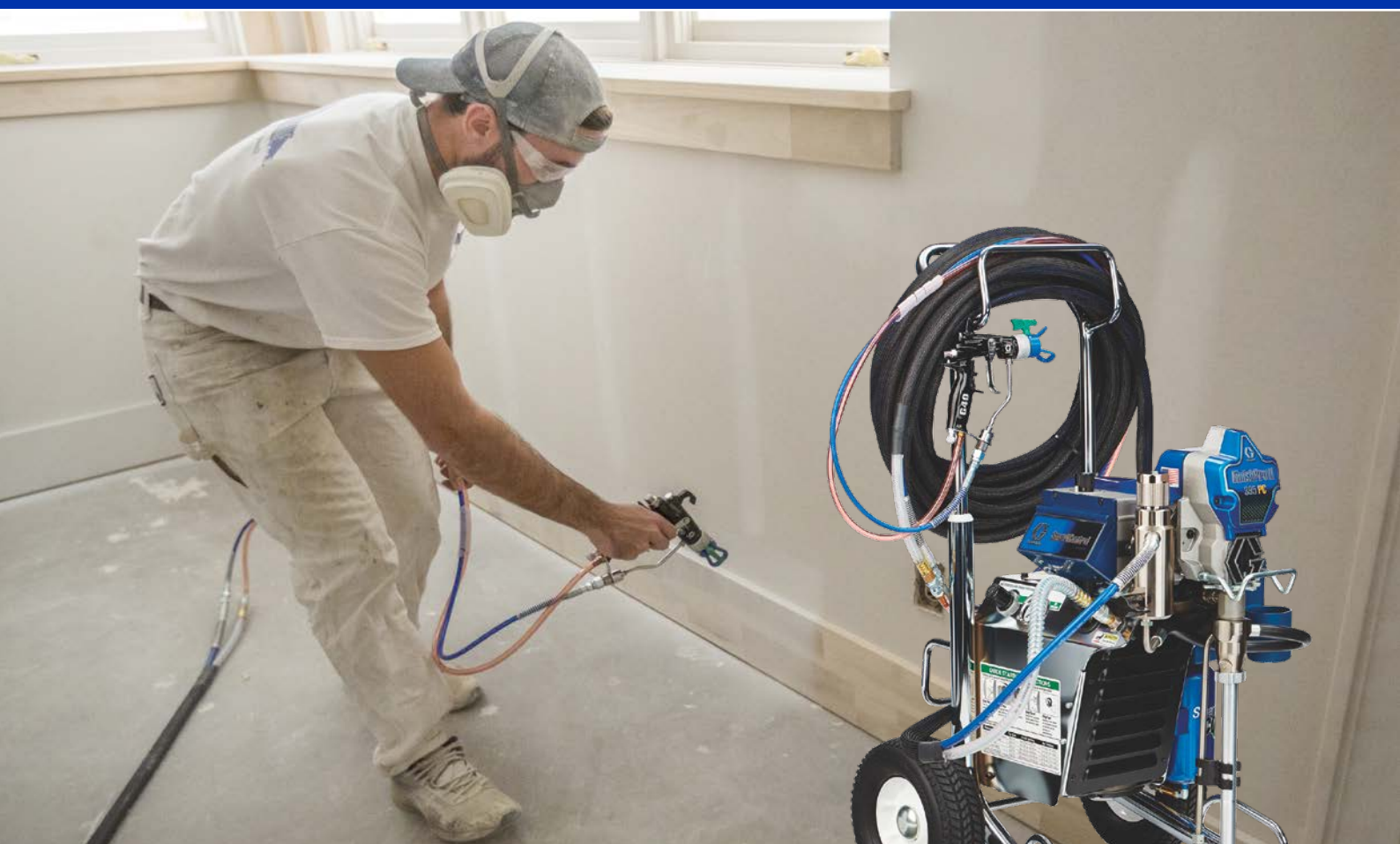




# FINISHPRO™ II PC Pro

Compact High Performance Air-Assisted Airless Sprayers  
with On-board Compressor for a High-end Finish



## PROFESSIONAL ADVANTAGES

- 2 in 1: combine the advantages of Air-Assisted Airless and Airless spraying with one unit  
Top HVLP finishing at the speed of Airless, with no dilution
- “Green” **SmartComp™** on-board compressor that only runs when air is needed.  
This saves energy and reduces wear and noise.
- Streamline your business with the **BlueLink™ App** powered by **SmartControl™**.  
Know the position and condition of your sprayer and paint supplies.

Painter - Fine Finish Applications

FINISHPRO™ II 395 PC - FINISHPRO™ II 595 PC PRO

# FINISHPRO II PC Pro

Finish every job, every day!  
for Professionals

FinishPro™ II Electric Fine Finish Sprayers offer innovative features in a portable, self-contained, Air-Assisted Airless system. All sprayers are equipped with the ultra-light G40™ Gun, Super-Flex™ hose set, on-board compressor and Graco's proven piston pump technology.

## “Plug and Spray” 2-in-1 Sprayer

Switch from Airless to Air-Assisted technology at the flip of a switch. Spray in Air-Assisted mode using the perfect air delivered by a smart compressor that only runs if air is needed, which saves electricity and reduces wear.

The **FinishPro II 395 PC** and **595 PC Pro** true 2-in-1 sprayers enable high-quality finishing work as well as pure airless spraying of walls and ceilings in residential and commercial projects with minimum overspray. Both sprayers are equipped with the ProConnect™ Easy Pump Removal System.

The **FinishPro II 595 PC Pro** is equipped with the BlueLink™ Job Management technology and the unit has a maintenance free brushless motor. In combination with the FastFlush™ cleaning system, this unit has enough power (2.6 litres) to spray many exterior paints. It is the ideal unit for large commercial projects in combination with occasional façade painting.

## Download the BlueLink™ App

Available in multiple languages

<http://www.graco.com/bluelink>



**CONNECT TODAY  
ENSURE YOUR FUTURE**

### Track every sprayer:

- Know exact locations and hourly productivity
- Make fewer trips to job sites

### Know job progress:

- On-demand productivity facts and reporting from anywhere
- Ensure you're on time with essential materials

### Maximise uptime:

- Set preventive maintenance schedules and receive alerts
- Ensure your sprayer is ready for every job



### SmartComp™ – High Output On-board Compressor

On machine start-up, the compressor charges the SmartComp™ system in less than a minute. The compressor is activated by the gun trigger.

- If you're not spraying, it is not running, which reduces noise on the job site
- Automatic shut-off extends compressor life and reduces electricity use
- Exclusive pressure unloader results in quieter operation



### FastFlush™ Save time cleaning your unit:

The FastFlush™ pump cleaning system cleans the unit up to four times faster using only half the water.



### On-board Toolbox

Convenient storage container keeps tools, tips, filters and accessories where you need them most (Hi-Boy).



## The FinishPro is the ideal unit for larger fine finish jobs.

The FinishPro has been tested and approved to spray a wide range of lacquers, acrylics, primers, enamels, varnishes and acrylic interior paints out of the bucket.

The ideal unit for renovation of cabinets, lighting features, shutters, fences, trims, stairs and staircases as well as for painting doors, walls, decks and ceilings.



Powered by:

### SMARTCONTROL™

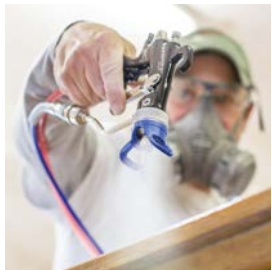
#### SmartControl 4.0

Delivers best finish, lowest dead band at any pressure:

- with ProGuard™ voltage protection  
(FinishPro II 595 PC Pro)
- with display showing pressure, litres and hours sprayed  
(FinishPro II 395 PC)

#### Super-Flex™ Hose Set

Increases flexibility and manoeuvrability, allowing you to work in confined spaces, helping you to increase the quality of finish.  
- Focus on the task, not the tool



## G40™ Gun

### DESIGNED TO MAXIMISE EFFICIENCY AND QUALITY



#### Industrial-grade finishing gun, delivering a professional finish

- Extremely lightweight
- Gun filter integrated into the gun to minimise tip clogs
- Air adjustment valve built into the gun
- Air cap with flat tip; extremely fine finish reduces overspray
- RAC tip conversion kit to spray wall paint



## GOOD TO KNOW

### AIR-ASSISTED AIRLESS versus AIRLESS

#### AIR-ASSISTED AIRLESS

When spraying Air-Assisted Airless, material is delivered to the gun at a pressure lower than traditional Airless (50-110 bar) and is partially atomized by the tip. Full atomisation is achieved by adding a small amount of air to the edges of the spray fan.

#### Benefit

Air-Assisted Airless spraying results in a softer pattern, more control, higher efficiency and less overspray, at virtually the speed of an Airless unit.

*More speed? With the flip of one switch, the finisher turns into an Airless sprayer.*



#### AIRLESS

When spraying airless with an Airless pump, fluid is transferred from your paint bucket to the gun simply by putting the paint under pressure (160-230 bar).

#### Benefit

Airless spraying is fast and paints can be sprayed without thinning.



#### ! TIP

With a spare pump ready, you'll always be able to finish your job!

## No more time wasted or money lost to labour charges on pump repairs.

Exchange your pump easily YOURSELF in 3 steps in case any damage appears.



1 Loosen the clamping nut



2 Open door and remove pump



3 Remove hose and suction tube

#### Fast Pump Replacement

- 1-minute job site replacement
- Keeps you spraying instead of waiting for service
- No pins or parts to lose!



# FINISHPRO II PC Pro



## All units shipped complete and ready to spray:

with an on-board compressor, G40™ gun (including air cap and tip), Super-Flex™ fluid and air hose kit (including whip hose) and flex hose wrap.

Part Numbers: for EURO Version (230 V)	FinishPro II PC	FinishPro II PC Pro
	395	595
Multi x4: IT-CH-DK-UK (230 V)	17C418	17E912
UK (110 V)	17C421	17E913
Max. Tip Size - 1 gun	17C320	–
Max. Fluid Flow - l/min. (gpm)	0.023"	0.027"
Max. Working Pressure - bar (PSI)	2.0 (0.54)	2.6 (0.68)
Motor Rating - kW / HP (DC) / Minimum Generator Requirement - W	227 (3300)	227 (3300)
Turbine / Compressor l/min (cfm)	0.65 (0.875) TEFC Brush DC / 4000	1.19 (1.6) Brushless DC / 4000
Max. Air Working Pressure - bar (PSI)	2 (0.70)	2.7 (0.95)
Weight - kg (lbs)	2.4 (35)	2.4 (35)
Features: BlueLink™ / Display	50 (110)	51 (112)
G40™ gun	– / ✓	✓ / –
Air Pressure Gauge / Flat to RAC Conversion Kit	Flat tip and guard	Flat tip and guard
Tips	✓ / ✓	✓ / ✓
Fluid Hose + Fluid Whip Hose	FFLP210 / LTX517 / AAM309	FFLP210 / LTX517 / AAM309
Air Hose + Air Whip Hose	1/4" x 7.5 m + 1/8" x 2 m	1/4" x 15 m + 1/8" x 2 m
SmartComp™ / ProConnect™ / FastFlush™ / ProGuard™	3/8" x 7.5 m + 1/4" x 2 m	3/8" x 15 m + 1/4" x 2 m
Gun / Pump Filter - Mesh	✓ / ✓ / – / –	✓ / ✓ / ✓ / ✓
SmartControl™ Version	100/100	100/100
	1.0	4.0

## Accessories

### Get the most out of your equipment by using our professional accessories.

Looking for more detailed info? See our Airless Accessories brochure 300672

#### G40™ Guns

Air, flow and fan adjustment, 100 mesh gun filter, tip and guard

262932 Flat tip AAM309 (incl. fan regulator)  
262929 RAC tip FF LP210 (no fan regulator)

#### Super-Flex™ Fluid and Air Hose Set

Including 2 m whip

24U578 7.5 m  
24U579 15 m

#### Fluid and Air Hoses

G40 gun, tip, whip, Super-Flex™ fluid and air hose kit

24V155 Delivered with 262932 + 24U578  
24V156 Delivered with 262929 + 24U579

#### Super-Flex™ Whip Hose

278750 1/8" x 2 m (fluid)

#### Flex Wrap Hose Protector

24U576 7.5 m  
24U577 15 m

#### ProGuard™+

24W090 230V, CEE 7/7, shuko  
24W755 230V, IEC320, multicord

#### Blister Pack - ProConnect Pump Lower

17C489 Blister Pack, fits only FinishPro II 395 PC and FinishPro II 595 PC Pro

#### Hopper Assembly 5.7 litre

17H171 Hopper

#### RAC X™ Tip Extensions

287019 25 cm  
287020 40 cm  
287021 50 cm  
287022 75 cm

#### JetRoller™ System

##### 0.5 m Heavy Duty Extension

with Inline™ Gun:  
24V490 roller 18 cm  
24V491 roller 25 cm  
without Inline™ Gun:  
24V492 roller 18 cm  
24V493 roller 25 cm

232123 1 m Heavy Duty extension

#### CleanShot™ RAC X™ Pole Gun

287026 90 cm  
287027 180 cm

#### Tips & Guards

FF LPXXX Green RAC X fine finish tip  
PAAXXX Blue RAC X professional airless tip  
AAMXXX Flat AA tip with SST body

#### Filters

##### G40 Gun Filters (5-pack)

224454 60 mesh  
224453 100 mesh

##### FinishPro II 395/595 Easy Out™ Manifold Filter

246384 60 mesh, black  
246382 100 mesh, blue  
246383 200 mesh, red

##### FinishPro II 395/595

246385 Pump inlet strainer

##### Disposable, Inline Desiccant Air Filter

127465 Single  
24U981 5-pack  
24U982 25-pack

#### Various

288839 G40 RAC X air cap  
288514 Conversion kit (RAC to flat)  
24U616 Conversion kit (flat to RAC)  
249256 Guard for AAM flat tip  
249180 Air cap for AAM flat tip

All written and visual data contained in this document are based on the latest product information available at the time of publication. Graco reserves the right to make changes at any time without notice.

Graco is certified ISO 9001.

GRACO DISTRIBUTION BV Industrieterrein Oude Bunders • Slakweidestraat 31 • B-3630 Maasmechelen  
Tel: +32 (89) 770 700 • Fax: +32 (89) 770 777 • <http://www.graco.com>



Every Graco purchase comes with A+ Customer Service.

