



# PROMIX<sup>®</sup> V

## PLURAL COMPONENT MIXING VERSATILITY FOR LIQUID FINISHING

Gain the technology, data, and ease of use to assure quality results now with the versatility to adapt to the future.

### 5th Generation Functionality with Innovative Scalability

Plural component proportioners assure up to  $\pm 1$  percent accuracy for top quality industrial liquid finishing results - with the ability to add more colors and catalysts after installation.

#### Meter Package

uses G3000 gear flow meters to precisely produce a mix ratio range of up to 50:1.

#### Fluid Path

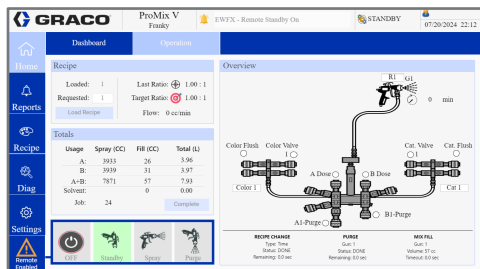
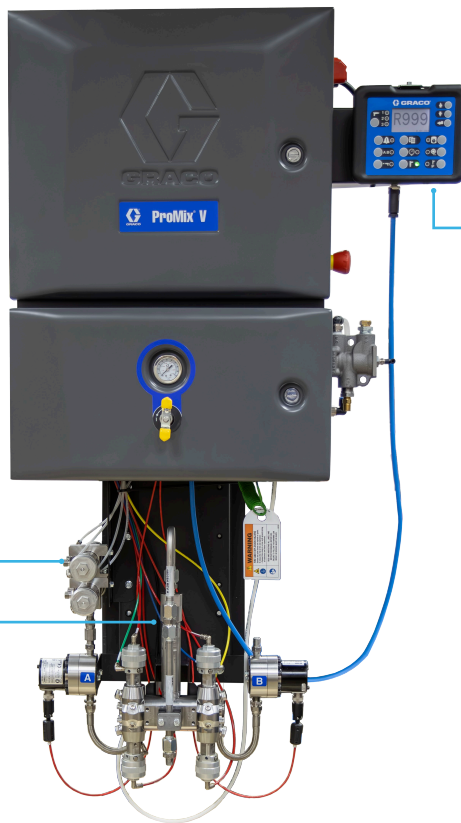
- All stainless steel (SST)
- Acid catalyst options

#### Fluid Mix Manifold

- Fewer parts than legacy
- Air/solvent chop standard that minimizes solvent use

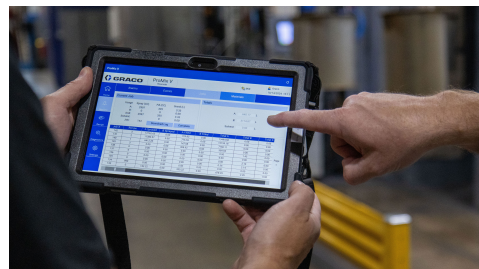
#### Booth Control

- Pot life, flow rate and ratio set point data
- Troubleshooting information



#### Intuitive User Interface

- Access material usage information, troubleshooting diagnostics, and data reporting.
- Connect locally or remotely from tablet, laptop or desktop computer.



# PROMIX<sup>®</sup> V

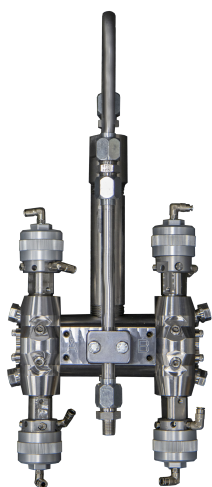
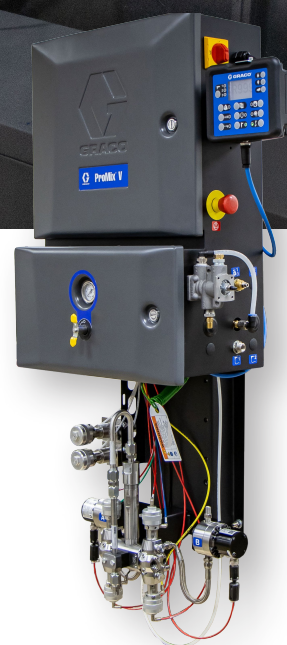
## TECHNICAL SPECIFICATIONS



### Technical Specifications

### Meter Based

Mix Ratio Range for Sequential Dosing	0.1:1 to 50:1
Mix Ratio Range for Dynamic Dosing	0.1:1 to 30:1
Ratio Accuracy	Up to +/-1%
Max. Resin Colors	23 (w/ additional valves and I/O)
Max. Fluid Pressure	4000 psi
Max. Number of Guns/Fluid Panel	4
Air/Solvent Chop?	Yes



### Standard Fluid Panel

- Easy access for quick service
- Fewer parts than legacy mix manifold
- Optional dump valve and calibration kits

**For product information or to request a demonstration,**

call 877.84GRACO (1-877-844-7226) or visit [www.graco.com/ProMixV](http://www.graco.com/ProMixV)