

PROMIX® V METER PACKAGES

Plural Component Mixing Versatility for Liquid Finishing



Gain the technology, data, and ease of use to assure quality results now with the versatility to adapt to the future.

5TH GENERATION FUNCTIONALITY WITH INNOVATIVE SCALABILITY

Plural component proportioners assure up to ± 1 percent accuracy for top quality industrial liquid finishing results – with the ability to add more capabilities after installation.

METER PACKAGE

Uses G3000 gear flow meters to precisely produce a mix ratio range of up to 50:1

FLUID PATH

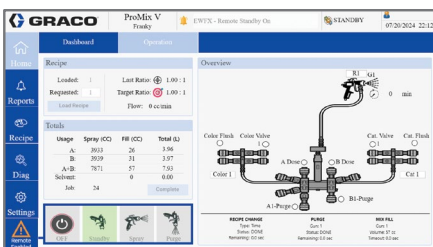
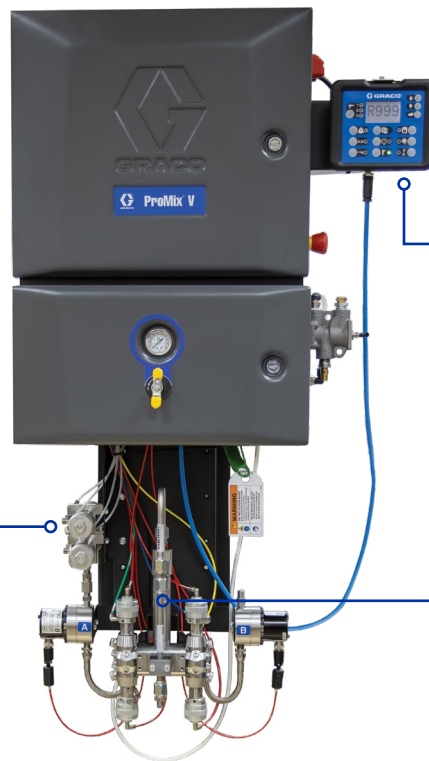
- All stainless steel (SST)
- Acid catalyst options
- 4,000 psi maximum fluid pressure

BOOTH CONTROL

- Standard on all ProMix V systems
- Pot life, flow rate and ratio set point data

FLUID MIX MANIFOLD

- Industry-leading sequential dosing
- Air/solvent chop standard that minimizes solvent use



INTUITIVE USER INTERFACE

- Access material usage information, troubleshooting diagnostics and data reporting.
- Connect locally or remotely from tablet, laptop or desktop computer.

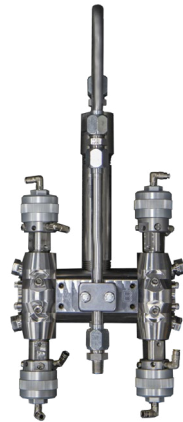
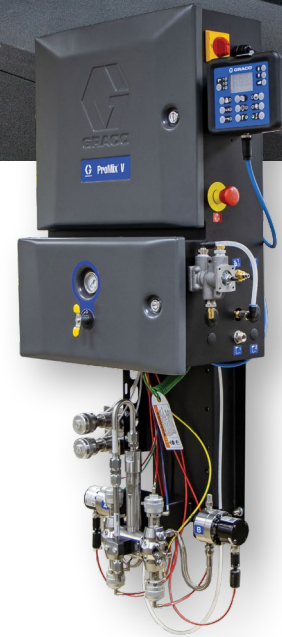


PROMIX® V METER PACKAGES

Technical Specifications



TECHNICAL SPECIFICATIONS	METER PACKAGE
Mix Ratio Range for Sequential Dosing	0.1:1 to 50:1
Ratio Accuracy	Up to +/-1%
Maximum Resin Colors	7
Maximum Catalysts	2
Maximum Fluid Pressure	4,000 psi
Maximum Number of Guns/Fluid Panel	2
Air/Solvent Chop	Standard



STANDARD MIX MANIFOLD

- Easy access for quick service
- Fewer parts than legacy mix manifold
- Optional dump valves and calibration kits

For product information or to request a demonstration,
call 877.84GRACO (1-877-844-7226)
or visit www.graco.com/ProMixV

