

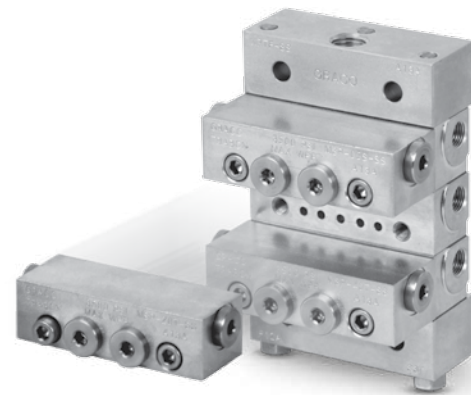
Series Progressive Selection Guide

Trabon® MSP Stainless Steel Divider Valves and Accessories



| MSP Working Sections (Must be ordered in multiples of five) | |
|--|---|
| 24B479 | MSP-5T-SS |
| 24B474 | MSP-5S-SS |
| 562758 | MSP-10T-SS |
| 562755 | MSP-10S-SS |
| 24B480 | MSP-15T-SS |
| 24B475 | MSP-15S-SS |
| 562759 | MSP-20T-SS |
| 562756 | MSP-20S-SS |
| 24B481 | MSP-25T-SS |
| 24B476 | MSP-25S-SS |
| 24B482 | MSP-30T-SS |
| 24B477 | MSP-30S-SS |
| 24B483 | MSP-35T-SS |
| 24B478 | MSP-35S-SS |
| 562760 | MSP-40T-SS |
| 562757 | MSP-40S-SS |
| MSP Inlets, Intermediate Base and End Sections (Must be ordered in multiples of five) | |
| 15Y070 | MSP Inlet SS, 1/4-18 NPSF |
| 16P368 | MSP Inlet SS, 1/4-19 BSPP |
| 24B497 | MSP-SS Intermediate Base, 1/8-27 NPSF Ports (NPT) |
| 24N369 | MSP-SS Intermediate Base, 1/8-28 BSPP Ports (BSP) |
| 24B498 | MSP-SS Standard End |
| MSP Base Plate Assemblies | |
| 24N382 | 3 Section Base Plate Assembly SS; NPSF |
| 24N383 | 4 Section Base Plate Assembly SS; NPSF |
| 24N384 | 5 Section Base Plate Assembly SS; NPSF |
| 24N385 | 6 Section Base Plate Assembly SS; NPSF |
| 24N386 | 7 Section Base Plate Assembly SS; NPSF |
| 24N387 | 8 Section Base Plate Assembly SS; NPSF |
| 24N388 | 3 Section Base Plate Assembly SS; BSPP |
| 24N389 | 4 Section Base Plate Assembly SS; BSPP |
| 24N390 | 5 Section Base Plate Assembly SS; BSPP |
| 24N391 | 6 Section Base Plate Assembly SS; BSPP |
| 24N392 | 7 Section Base Plate Assembly SS; BSPP |
| 24N393 | 8 Section Base Plate Assembly SS; BSPP |

| MSP Tie Rods and Nut | |
|----------------------|--|
| 126247 | 3 Section Tie Rod for MSP-SS |
| 126248 | 4 Section Tie Rod for MSP-SS |
| 126249 | 5 Section Tie Rod for MSP-SS |
| 126250 | 6 Section Tie Rod for MSP-SS |
| 126251 | 7 Section Tie Rod for MSP-SS |
| 126252 | 8 Section Tie Rod for MSP-SS |
| 15Y069 | 9 Section Tie Rod for MSP-SS |
| 560956 | 10 Section Tie Rod for MSP-SS |
| 558633 | Tie Rod Nut-SS |
| Accessories | |
| 24B495 | 1000 psi Reset Indicator w/Memory, O-Ring Seal |
| 24B496 | 1500 psi Reset Indicator w/Memory, O-Ring Seal |
| 24N373 | 2000 psi Reset Indicator w/Memory, O-Ring Seal |
| 560974 | 303 SS MSP Indicator Port Plug |
| 560973 | 303 SS Piston Bore Plug |
| 555457 | SS Base closure plug accessory |
| 24N945 | Valve, Relief, 1/8 NPT, 750 psi SST |
| 24N948 | Valve, Relief, 1/8 NPT, 1500 psi SST |
| 24N949 | Valve, Relief, 1/8 NPT, 2000 psi SST |
| 24N951 | Valve, Relief, 1/8 NPT, 2500 psi SST |
| 24N952 | Valve, Relief, 1/8 NPT, 3000 psi SST |
| 24R631 | Crossport Bar Both |
| 24R632 | Crossport Bar Right |
| 24R633 | Crossport Bar Left |



North America Customer Service **800-533-9655** Fax **800-533-9656**

www.graco.com

©2013 Graco Inc. • P.O. Box 1441 • Minneapolis, MN 55440-1441 • Rev A • 04/13 • Printed in U.S.A.

All written and visual data contained in this document are based on the latest product information available at the time of publication. Graco reserves the right to make changes at any time without notice.