



This manual contains important warnings and information.
READ AND KEEP FOR REFERENCE.

INSTRUCTIONS

First choice when quality counts.™

HYDRA-CLEAN™ 1535, 2030, 2540, 3040

Pressure Washers

Hydra-clean 1535 (Siphon Feed)

804560 Series B

1500 psi (10.2 MPa, 102 bar) Operating Pressure

1900 psi (13.1 MPa, 131 bar) Maximum Working Pressure

Hydra-clean 2030 (Siphon Feed)

804561 Series B

2000 psi (13.8 MPa, 138 bar) Operating Pressure

2400 psi (16.5 MPa, 165 bar) Maximum Working Pressure

Hydra-clean 2540 (Siphon Feed)

804562, Series B

2500 psi (17.2 MPa, 172 bar) Operating Pressure

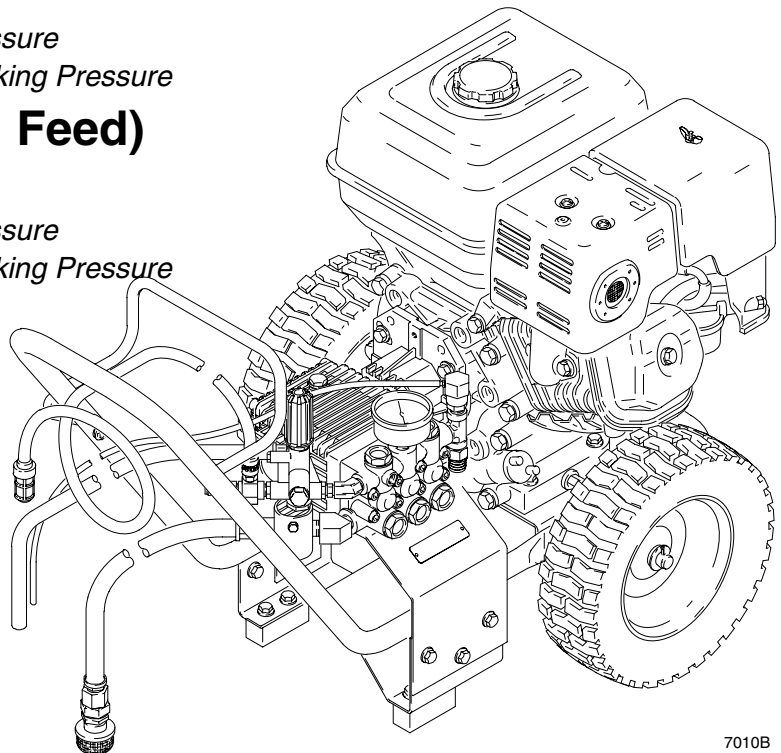
2900 psi (20.0 MPa, 200 bar) Maximum Working Pressure

Hydra-clean 3040 (Siphon Feed)

804563, Series B

3000 psi (20.7 MPa, 207 bar) Operating Pressure

3400 psi (23.4 MPa, 234 bar) Maximum Working Pressure



Model 804562

7010B

GRACO INC. P.O. BOX 1441 MINNEAPOLIS, MN 55440-1441

<http://www.graco.com>

©COPYRIGHT 1997 GRACO INC.

Graco Inc. is registered to I.S. EN ISO 9001

Table of Contents

Warnings	2
Component Identification and Function	4
Installation	5
Operation	6
Troubleshooting	11
804573 & 804578 Pump Service	13
804565 & 804566 Pump Service	15
Accessories	17
Technical Data	17
Parts List & Drawing	
Hydra-clean 1535, 2030 Pressure Washer	18
Hydra-clean 2040, 3040 Pressure Washer	20
Pump Assembly Models 804573 and 804578	22
Pump Assembly Model 804565 & 804566	24
Warranty	26
Graco Phone Numbers	26

Warning Symbol



This symbol alerts you to the possibility of serious injury or death if you do not follow instructions.

Caution Symbol



This symbol alerts you to the possibility of damage to or destruction of equipment if you do not follow instructions.

! WARNING



INJECTION HAZARD

Spray from gun, leaks or ruptured components can inject fluid into your body and cause serious injury. Fluid splashed in eyes or on skin can also cause serious injury.

- Fluid injected into skin may look like just a cut, but it is a serious injury. **Get emergency medical attention.**
- Do not point gun at anyone or at any part of body.
- Do not stop or deflect leaks with hand, body, glove or rag.
- Do not put hand or fingers over spray tip.
- Tighten fluid connections before starting equipment.
- Engage gun trigger safety whenever spraying is stopped.
- Follow **Pressure Relief Procedure** on page 6 if spray tip clogs and before cleaning, checking or servicing equipment.
- Repair or replace worn or damaged parts immediately.
- Check hoses, tubes, and coupling daily. Do not repair high pressure couplings: replace entire hose. Fluid hoses must have spring guards on both ends to prevent kinks and rupture.

WARNING



HAZARDOUS FLUIDS

Improper handling of hazardous fluids can cause serious injury, even death, due to splashing in eyes, ingestion or bodily contamination.

- Know specific hazards of fluid being used.
- Store hazardous fluids in approved containers. Dispose of hazardous fluids per local, state and national guidelines.
- Wear protective eyewear, gloves, clothing, and respirator as recommended by fluid manufacturer.



FUEL HAZARD

The fuel used in this unit is combustible and when spilled on a hot surface can ignite and cause a fire.

- Do not fill fuel tank while engine is running or hot.



EXHAUST HAZARD

The exhaust contains poisonous carbon monoxide which is colorless and odorless.

- Do not operate this equipment in a closed building.



EQUIPMENT MISUSE HAZARD

Misuse of pressure washer or accessories may cause them to rupture and result in fluid injection, splashing in eyes or on skin, or other serious injury.

- Do not alter or modify this equipment. Use only genuine Graco parts and accessories.
- Do not exceed maximum working pressure of any component or accessory in system.
- Do not use any chemicals that are incompatible with wetted parts as stated in Technical Data.
- Do not alter throttle setting.

Component Identification and Function

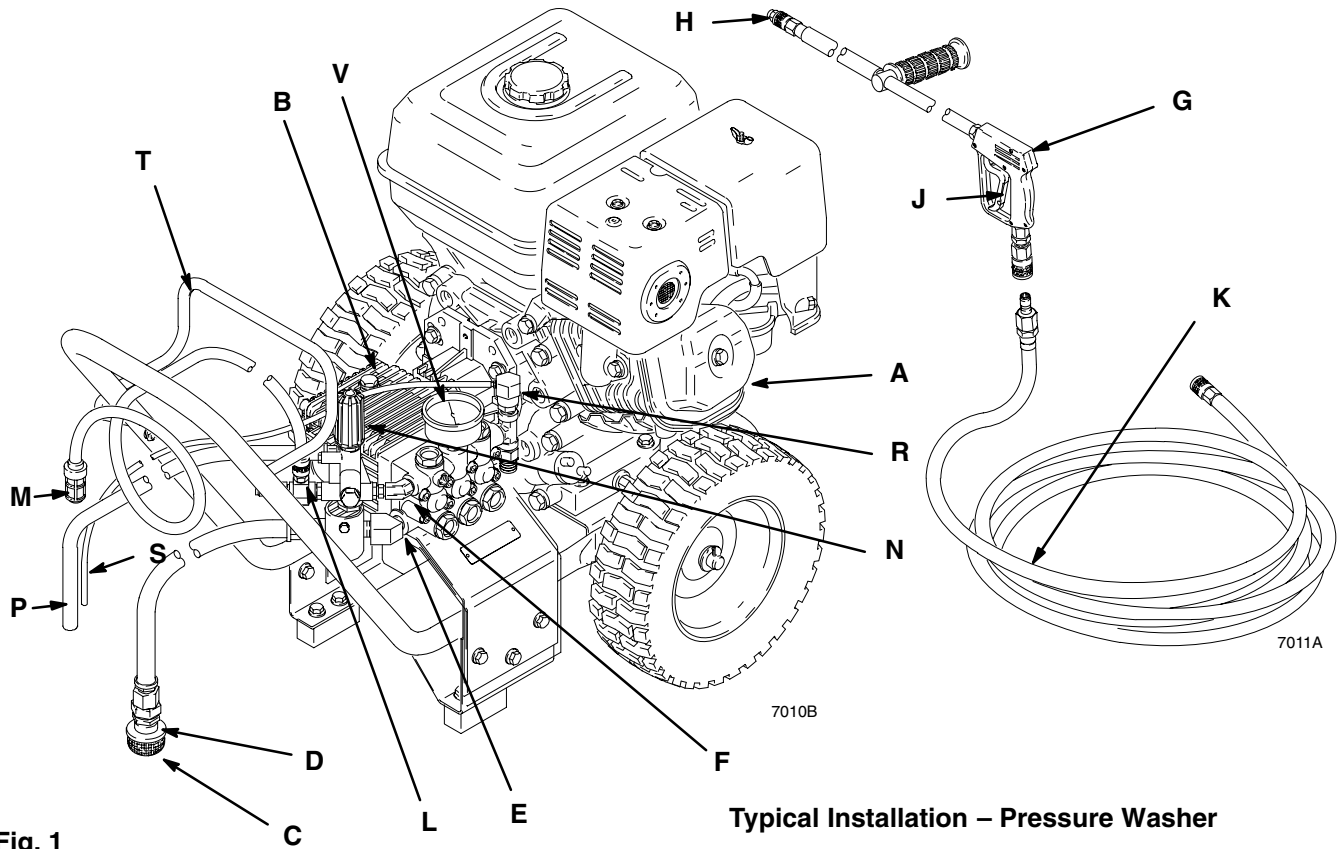


Fig. 1

Typical Installation – Pressure Washer

A	Engine	5.5 horsepower (models 1535 and 2030), 9 horsepower (model 2540), 11 horsepower (model 3040), operates pump assembly
B	Pump Assembly	Pressurizes fluid to be sprayed through spray gun
C	Inlet Screen	Screens out debris and other material between source and siphon tube fluid filter
D	Inlet Filter	Filters fluid between screen and fluid inlet
E	Fluid Inlet	Fluid inlet to displacement pump from siphon tube
F	Fluid Outlet	Hose and spray gun connection
G	Spray Gun	High pressure spray gun with gun safety latch
H	Spray Tip	Variety of spray tips depending on job needs
J	Spray Gun Safety Latch	Prevents accidental triggering of spray gun
K	Spray Hose	100 ft (30 m), 1/4 in. or 3/8 in. ID, grounded, nylon hose with spring guards on both ends
L	Injector	Injects chemical into spray hose and gun during pressure washer operation by syphon action
M	Injector Strainer and Tube	Strains and routes chemical from source to injector
N	Unloader	Relieves fluid pressure when open
P	Unloader Drain Tube	Provides drainage for unloader
R	EZ Start Valve	Provides quick priming and pump operation
S	EZ Start Drain Tube	Provides drainage for EZ start valve
T	Hose Rack	Provides storage for spray hose
V	Pressure Gauge	Measures and displays pump air pressure

Installation

Check for Shipping Damage

Check unit for any damage that may have occurred in shipping. **Notify carrier immediately** if there is any damage.

Set Up

Connect high pressure hose (K) between pump outlet and gun inlet. Both of these connections are made with quick couplers.

CAUTION

Up to 100 ft (30 m) of high pressure hose may be used. Longer hoses may affect sprayer performance, and chemical injector performance, if used.

Install desired spray tip (H) on spray gun (G). See Installing and Changing Spray Tips. If you are using a sandblaster kit, see its separate manual for installation instructions.

Water Supply

CAUTION

Do not exceed 160°F (70°C) inlet water temperature.

Insert siphon tube (P) in container providing clean water source.

NOTE: The water supply must be able to provide water at a minimum flow rate equal to that of unit while its being used (see Technical Data on page 17).

Operation

Pressure Relief Procedure

WARNING



INJECTION HAZARD

System pressure must be manually relieved to prevent system from starting or spraying accidentally. Fluid under high pressure can be injected through skin and cause serious injury. To reduce risk of injury from injection, splashing fluid, or moving parts, follow **Pressure Relief Procedure** whenever you:

- are instructed to relieve pressure,
- stop spraying for more than 10 minutes,
- check or service system equipment,
- install or clean spray nozzle.

Pressure Relief Procedure

1. Engage trigger safety latch.
2. Turn sprayer off.
3. Remove ignition cable from spark plug.
4. Remove siphon tube from water supply.
5. Disengage trigger safety latch and trigger gun to relieve pressure. Engage trigger safety latch.
6. *If spray tip or hose is completely clogged, or pressure has not been fully relieved after following steps above:* Disengage trigger safety latch and trigger gun to relieve pressure. Wrap rag around hose end coupling and **VERY SLOWLY** loosen coupling to relieve pressure gradually, then loosen completely. Now clear tip or hose.

Startup

Always use start-up procedure to ensure that unit is started safely and properly.

1. Check oil level:

NOTE: All units are equipped with a low-oil sensor that shuts engine off if oil level falls below a certain level. If unit stops unexpectedly, check both oil and fuel levels. Check oil level each time unit is refueled.

2. Check fuel level.

WARNING



FIRE HAZARD

Do not refuel a hot engine. Refueling a hot engine could cause a fire. Use only fresh, clean regular or unleaded gasoline. Close fuel shutoff valve during refueling.

CAUTION

Never run unit dry. Costly damage to pump will result. Always be sure water supply is sufficient before operating.

3. Put siphon tube in water supply. For best performance, place siphon tube and water source at the same or higher level than pressure washer.

Operation

4. Trigger gun until water sprays from tip indicating that air is purged from system.
5. Open fuel shutoff valve. Be sure spark plug ignition cable is pushed firmly onto spark plug. Put switch in ON position and put throttle in RUN position.

CAUTION

Do not allow pressure washer to idle more than 10 minutes. Doing so may cause recirculating water to overheat and seriously damage pump. Turn off pressure washer if not spraying or cleaning at least every 10 minutes. If heated inlet water is used, reduce time further. Do not operate pressure washer with inlet water screen removed. Keep screen clean. Screen keeps abrasive sediment out of pump, Abrasive sediment can clog pump or damage cylinders. Do not pump caustic materials; such materials may corrode pump components.

CAUTION

Do not allow starter rope to snap back against engine. Return carefully to prevent damage to recoil.

6. Start engine.

If engine is cold, completely close engine choke. Grasp starter rope, brace one foot on pressure washer chassis and pull rope rapidly and firmly. Continue holding rope as it returns. Pull and return rope until engine starts. In cool weather, choke may have to be kept closed for 10 to 30 seconds before opening it to keep engine running. Otherwise, open choke as soon as engine starts.

If engine is warm, leave choke open, or partly open. Start engine as described in preceding paragraph. When it starts, open choke completely.

Operate engine at reduced rpm to assist priming. When water flows from return hoses pump is primed. Raise engine to full rpm for normal pressure washer operation.

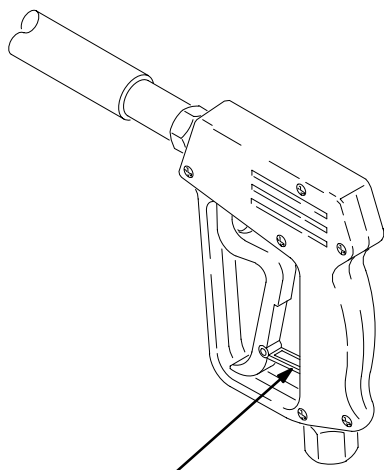
7. Always engage gun's trigger safety latch when spraying is stopped, even for a moment. This reduces risk of fluid injection or splashing in eyes or on skin if gun is bumped or triggered accidentally.
8. Always observe preceding **CAUTIONS** to avoid damage to pressure washer.
9. See sandblaster kit manual for detailed cleaning information if this accessory is used.

Operation

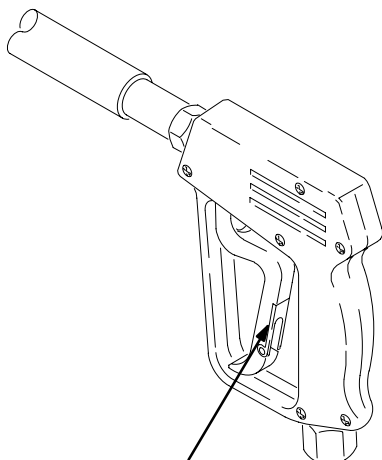
Trigger Safety Latch

WARNING

To reduce risk of serious bodily injury, including fluid injection, splashing in eyes or on skin, always engage trigger safety latch when spraying is stopped, even for a moment. In engaged position, trigger safety latch prevents gun from being triggered accidentally by hand or if dropped or bumped. Be sure to push down latch fully to engage it. If latch not fully engaged, gun can accidentally trigger. See Figure 2.



TRIGGER SAFETY LATCH SHOWN ENGAGED



04612

TRIGGER SAFETY LATCH SHOWN DISENGAGED
Figure 2

Chemical Injector Operation

WARNING

To reduce risk of serious bodily injury, including fluid injection or splashing in eyes or onto skin, use extreme caution when changing spray tips. Always follow procedure below.

1. Follow **Pressure Relief Procedure**.
2. Insert chemical filter (attached with clear tubing to chemical injector) into container of chemical.
3. Install black spray tip for chemicals (see **Installing and Changing Tips**).

The large hole of the chemical spray tip causes a drop in pressure that actuates the chemical injector. Changing back to a smaller diameter spray tip deactivates the chemical injector and produces high pressure for rinsing. The chemical filter can be left in the chemical container during high pressure use. The flow rate of the chemical may be regulated by turning the chemical adjustment knob on the injector. The maximum chemical flow is a full two turns counterclockwise from the closed (clockwise) position.

Operation

Installing and Changing Spray Tips

⚠ WARNING

To reduce risk of serious bodily injury, including fluid injection or splashing in eyes or onto skin, use extreme caution when changing spray tips. Always follow procedure below.

1. Follow **Pressure Relief Procedure**.
2. Point gun and wand away from yourself and anyone else.
3. Spray tips have a 4- or 5-digit number on them. The first two digits are spray angle. Select spray tip appropriate for application.

Spray Tip Number	Spray Pattern Fan Angle
00XXX	0°, blaster (red)
15XXX	15° (yellow)
25XXX	25° (green)
40XXX	40° (white)

NOTE: The chemical injector spray tip is brass with large diameter hole and black cap.

4. Point spray tip (A) away from hands and body. Pull back quick coupler ring (B). Remove tip with fingers and hand to side of spray tip. Replace tip and push back ring. See Figure 3.
5. Pull on tip to be sure it is secure.
6. Storage for spray tips is provided on chassis next to pump.

⚠ CAUTION

O-ring (801202) may be blown out of quick coupler (B) due to high pressure in system. Never operate pressure washer without tip (A) securely mounted in quick coupler.

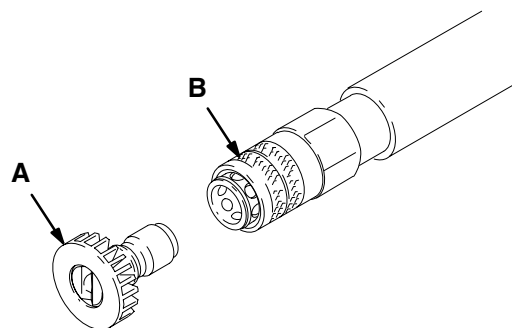


Figure 3

04929

Operation

Shutdown, Flushing and Storage

NOTE: For easier flushing, use anti -freeze flush kit 802327.

CAUTION

If water freezes in pressure washer, thaw in warm room before trying to start it. Do not pour hot water on or into pump. Hot water may crack ceramic plungers!

1. If pressure washer is used or stored in freezing temperatures, drain all water out of pump after use. Flush with 50% anti-freeze solution. Relieve pressure. Flush before using to remove anti-freeze.
2. Before long-term (overnight) storage or transport, disconnect water supply, and turn off fuel supply valve.
3. After each use, wipe all surfaces with a clean, damp cloth.
4. Perform regular maintenance. See maintenance chart.

Maintenance

Perform regular maintenance at listed intervals to ensure maximum life and performance.

There are different break-in periods for engine, pump, and gear reducer (if used). Follow each respective break-in period as listed.

If operating pressure washer in dusty conditions, perform maintenance checks more frequently.

WARNING

To reduce risk of serious bodily injury, including fluid injection, splashing in eyes or on skin or injury from moving parts, always follow **Pressure Relief Procedure** on page 6 before proceeding.

Interval	What to do
Daily	Clean water inlet screen and filter. Check engine and pump oil levels. Fill as necessary. Check gasoline level. Fill as necessary.
After first 5 hours of operation	Change engine break-in oil. Drain oil when warm. Use SAE 30 or 10W-30 detergent oil.
Each 25 hours of operation	Clean and remove air cleaner foam. Wash with water and detergent. Dry thoroughly. Rub with oil and squeeze to distribute oil.
After first 50 hours of operation	Change pump break-in oil. Use SAE 20 or 30 non-detergent oil.
Each 100 hours of operation or 3 months	Clean or replace paper air cleaner cartridge. Tap gently to remove dirt. Change engine oil. Use SAE 30 or 10W-30 detergent oil.
Each 500 hours of operation or 6 months	Change pump oil. Use SAE 20 or 30 non-detergent oil.

Troubleshooting

WARNING

To reduce risk of serious injury, including fluid injection and splashing in eyes, or on skin, always follow **Pressure Relief Procedure** on page 6 before proceeding.

Problem	Cause	Solution
Engine will not start or is hard to start	No gasoline in fuel tank or carburetor. Low oil. Start/Stop switch in Stop position. Water in gasoline or old fuel. Choked improperly. Flooded engine. Dirty air cleaner filter. Spark plug dirty, wrong gap or wrong type. Spray gun closed.	Fill tank with gasoline, open fuel shut off valve. Check fuel line and carburetor. Add to proper level. Move switch to start position. Drain fuel tank and carburetor. Use new fuel and dry spark plug. Open choke and pull engine several times to clear out gas. Use dry spark plug. Remove and clean. Clean, adjust gap or replace. Trigger spray gun while spraying.
Engine misses or lacks power	Partially plugged air cleaner filter. Spark plug dirty, wrong gap or wrong plug type.	Remove and clean. Clean and adjust spark plug gap or replace.
Low pressure and/or pump runs rough	Worn or wrong size tip. Inlet filter clogged. Worn packings, abrasives in water or natural wear. Inadequate water supply. Fouled or dirty inlet or discharge valves. Restricted inlet. Worn inlet or discharge valves. Leaking high pressure hose.	Replace with tip of proper size. Clean. Check more frequently. Check filter. Replace packings. See PUMP SERVICE, page 15. Check water flow rate to pump. Clean inlet and discharge valve assemblies. Check filter. Check garden hose, may be collapsed or kinked. Replace worn valves. See PUMP SERVICE, page 15. Replace high pressure hose.
Water leakage from under pump manifold	Worn packings.	Install new packings. See PUMP SERVICE, page 15..
Water on oil side of pump	Humid air condensing inside crankcase. Worn packings. Oil seals leaking.	Change oil as specified in Maintenance, page 10. Install new packings. See PUMP SERVICE, page 15. Install new oil seals. See PUMP SERVICE, page 15.

Troubleshooting

Problem	Cause	Solution
Frequent or premature failure of packings	<p>Scored, damaged or worn plungers.</p> <p>Abrasive material in fluid being pumped. Inlet water temperature too high.</p> <p>Overpressurizing pump.</p> <p>Excessive pressure due to partially plugged or damaged tip. Pump running too long without spraying.</p> <p>Running pump dry.</p>	<p>Install new plungers. See PUMP SERVICE, page 15.</p> <p>Install proper filtration on pump inlet plumbing. Check water temperature; may not exceed 160°F(70°C).</p> <p>Do not modify any factory-set adjustments. See EQUIPMENT MISUSE HAZARD on page 3. Clean or replace tip. See Installing and Changing Spray Tips on page 9.</p> <p>Never run pump more than 10 minutes without spraying.</p> <p>Do not run pump without water.</p>
Strong surging at inlet and low pressure on discharge side	Foreign particles in inlet or discharge valve or worn inlet and/or discharge valves.	Clean or replace valves. See PUMP SERVICE, page 15.

800573 & 804578 Pump Service

WARNING

To reduce risk of serious bodily injury, including fluid injection, splashing in eyes or on skin or injury from moving parts, always follow **Pressure Relief Procedure** on page 6 before proceeding.

NOTE: The following metric wrenches are needed: 5 mm, 13 mm and 22 mm. Repair kits are available. Refer to individual repair sections and pump parts page for details. For best results, use all parts in kits.

NOTE: Use tool kit, 800271, to aid in servicing pump. Kit includes tools to remove packing retainers.

Valves

NOTE: For six valve set, order 801472.

1. Remove hex plug from manifold using 22 mm socket.
2. Examine o-ring under hex plug. Replace if cut or distorted.
3. Remove valve assembly from cavity with care to avoid assembly coming apart.
4. Install new valve. Install o-ring and hex plug. Torque to 33 ft-lb (45 N•m).

NOTE: Re-torque plug after 5 hours of operation.

Pumping Section

1. Remove eight capscrews and lockwashers from manifold using 5 mm wrench.

2. Carefully separate manifold from crankcase.

NOTE: It may be necessary to tap manifold lightly with a soft mallet to loosen.

CAUTION

Keep manifold properly aligned with ceramic plungers when removing to avoid damage to plunger or seals.

3. Carefully examine each plunger for any scoring or cracking and replace as necessary.

Servicing Plungers

NOTE: Use plunger repair kit, 801474 to replace retainers, o-rings, washers and backup rings for three cylinders.

1. Loosen plunger retaining nut five to six turns using 13 mm wrench. Push plunger towards crankcase to separate plunger and retaining screw.
2. Remove nut from plunger and examine o-ring, backup ring, and copper bearing/gasket washer. If necessary, replace using parts from kit 801474.
3. Remove plunger and flinger from plunger shaft. Clean, examine, and replace parts as necessary.
4. Inspect plunger shaft for oil leakage from crankcase. If leaking, replace oil seals. Use oil seal kit to replace seals. DO NOT remove seals unless necessary. Removed seals must be replaced with new and not reused.
5. Lightly grease flinger and oil seal. Replace on plunger shaft. Install plunger.

800573 & 804578 Pump Service

6. Lightly grease retaining screw and outer end of plunger. Place washer, o-ring, and backup ring around screw. Install nut through plunger. Torque to 11 ft-lb (15 N•m).

NOTE: To replace packings, refer to Servicing V-Packings.

7. Lubricate outside of each plunger. Slide manifold onto crankcase. Be careful not to damage seals.
8. Install capscrews and washers finger-tight. Torque screws to 8.8 ft-lb (12 N•m). Follow tightening pattern in Fig. 4.

NOTE: Uneven tightening may cause manifold to bind or jam.

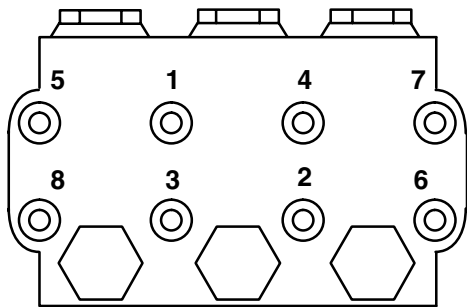


Figure 4

Servicing V-Packings

NOTE: There are two types of packing kits: one includes packings only, the other includes rings, retainers, and packings.

1. Remove manifold as outlined in Pumping Section.
2. Carefully pull packing retainer from manifold. Examine o-ring and replace if cut or damaged.
3. Remove v-packing and head ring. Pull out intermediate retainer ring. Remove second v-packing and second head ring.
4. Inspect all parts and replace as necessary.
5. Thoroughly clean packing cavities and examine for debris or damage.
6. Lightly grease packing cavities. Replace packings in the following order:
head ring,
v-packing,
intermediate ring,
head ring,
v-packing and packing retainer with o-ring installed in retainer groove.

CAUTION

Install parts in proper order and facing correct direction. Improperly installed parts will cause a malfunction.

7. Reassemble manifold as instructed in Servicing Plungers.

804565 & 804566 Pump Service

WARNING

To reduce risk of serious bodily injury, including fluid injection, splashing in eyes or on skin or injury from moving parts, always follow **Pressure Relief Procedure** on page 6 before proceeding.

NOTE: The following metric wrenches are needed: 5 mm, 13 mm and 22 mm. Repair kits are available. Refer to individual repair sections and pump parts page for details. For best results, use all parts in kits.

NOTE: Use tool kit, 800271, to aid in servicing pump. Kit includes tools to remove packing retainers.

Valves

NOTE: For six valve set, order 801472.

1. Remove hex plug from manifold using 27 mm socket.
2. Examine o-ring under hex plug. Replace if cut or distorted.
3. Remove valve assembly from cavity with care to avoid assembly coming apart.
4. Install new valve. Install o-ring and hex plug. Torque to 73 ft-lb (99 N•m).

NOTE: Re-torque plug after 5 hours of operation.

Pumping Section

1. Remove eight capscrews and lockwashers from manifold using 6 mm wrench.

2. Carefully separate manifold from crankcase.

NOTE: It may be necessary to tap manifold lightly with a soft mallet to loosen.

CAUTION

Keep manifold properly aligned with ceramic plungers when removing to avoid damage to plunger or seals.

3. Carefully examine each plunger for any scoring or cracking and replace as necessary.

Servicing Plungers

NOTE: Use plunger repair kit, 801474 to replace retainers, o-rings, washers and backup rings for three cylinders.

1. Loosen plunger retaining nut five to six turns using 13 mm wrench. Push plunger towards crankcase to separate plunger and retaining screw.
2. Remove nut from plunger and examine o-ring, backup ring, and copper bearing/gasket washer. If necessary, replace using parts from kit 801474.
3. Remove plunger and flinger from plunger shaft. Clean, examine, and replace parts as necessary.
4. Inspect plunger shaft for oil leakage from crankcase. If leaking, replace oil seals. Use oil seal kit to replace seals. DO NOT remove seals unless necessary. Removed seals must be replaced with new and not reused.
5. Lightly grease flinger and oil seal. Replace on plunger shaft. Install plunger.

804565 & 804566 Pump Service

6. Lightly grease retaining screw and outer end of plunger. Place washer, o-ring, and backup ring around screw. Install nut through plunger. Torque to 14.4 ft-lb (19.5 N•m).

NOTE: To replace packings, refer to Servicing V-Packings.

7. Lubricate outside of each plunger. Slide manifold onto crankcase. Be careful not to damage seals.
8. Install capscrews and washers finger-tight. Torque screws to 22 ft-lb (30 N•m). Follow tightening pattern in Fig. 5.

NOTE: Uneven tightening may cause manifold to bind or jam.

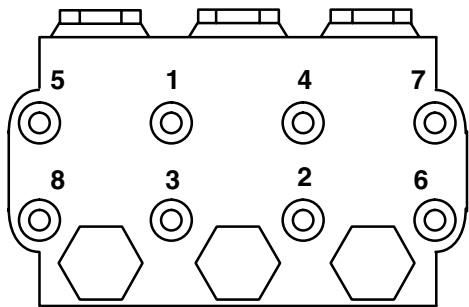


Figure 5

Servicing V-Packings

NOTE: There are two types of packing kits: one includes packings only, the other includes rings, retainers, and packings.

1. Remove manifold as outlined in Pumping Section.
2. Carefully pull packing retainer from manifold. Examine o-ring and replace if cut or damaged.
3. Remove v-packing and head ring. Pull out intermediate retainer ring. Remove second v-packing and second head ring.
4. Inspect all parts and replace as necessary.
5. Thoroughly clean packing cavities and examine for debris or damage.
6. Lightly grease packing cavities. Replace packings in the following order:
head ring,
v-packing,
intermediate ring,
head ring,
v-packing and packing retainer with o-ring installed in retainer groove.

CAUTION

Install parts in proper order and facing correct direction. Improperly installed parts will cause a malfunction.

7. Reassemble manifold as instructed in Servicing Plungers.

Accessories

Water Sandblasting Kit 800120

Kit used for abrasive cleaning of stubborn dirt and paint. Abrasive spray tip not included in kit. Use abrasive spray tip as follows:
 Model 1535 use 805325,
 Model 2030 use 805313,

Model 2540 use 805321,
 Model 3040 use 805317.

Antifreeze Flush Kit 802327

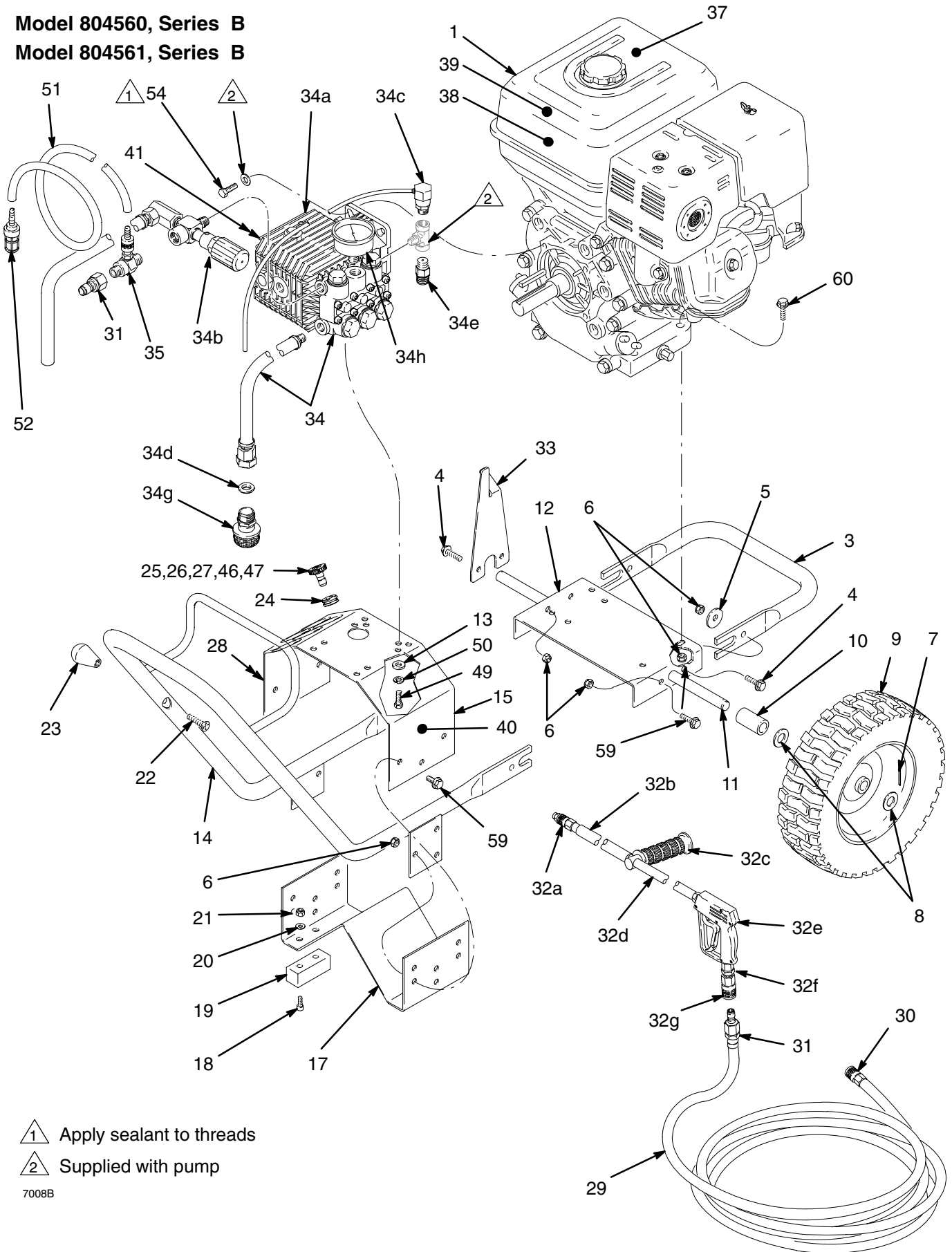
Kit used to flush systems with 50% anti-freeze solution prior to storage or transport in freezing temperatures.

Technical Data

	Model 804560	Model 804561	Model 804562	Model 804563
Engine (4 cycle, air cooled)	5.5 HP Honda OHV	5.5 HP Honda OHV	9 HP Honda OHV	11 HP Honda OHV
Gasoline Tank Capacity	3.8 quarts (3.6 liter)	3.8 quarts (3.6 liter)	6.2 quarts (6.1 liter)	6.9 quarts (6.5 liter)
Water Pump Maximum Working Pressure	1500 psi (10.2 MPa, 102 bar)	2000 psi (13.8 MPa, 138 bar)	2500 psi (17.2 MPa, 172 bar)	3000 psi (20.7 MPa, 207 bar)
Water Pump Maximum Flow	3.5 gpm (13 lpm)	3 gpm (11 lpm)	4 gpm (15 lpm)	4 gpm (15 lpm)
Inlet Hose Connection	3/4" garden hose (f)	3/4" garden hose (f)	3/4" garden hose (f)	3/4" garden hose (f)
Weight (without gun and hose)	79 lb (36 kg)	79 lb (36 kg)	110 lb (50 kg)	128 lb (58 kg)
Dimensions Length	34.5" (940mm)	34.5" (914mm)	34.5" (914mm)	34.5" (914mm)
Width	22" (483mm)	22" (533mm)	22" (533mm)	22" (533mm)
Height	23.5" (508mm)	23.5" (572mm)	23.5" (572mm)	23.5" (572mm)
Maximum Inlet Water Temperature	160°F (70°C)	160°F (70°C)	160°F (70°C)	160°F (70°C)
Sound data ISO 3744(CE1.5.8) sound power sound pressure	103.5 dB 93.1 dB	103.5 dB 93.1 dB	104.7 dB 94.3 dB	106.3 dB 95.8 dB
Wetted Parts High Pressure Hose Bypass Hose Pressure Washer (including fittings)	Acrylonitrile and Buna-N cover and tube Synthetic yarn and EPDM Anodized aluminum, Aluminum or bronze alloys, Brass Copper, Nylon-PTFE composite, Ceramic, Buna-N, Cotton phenolic, 303, 304, and 316 Stainless steel, Polyimide-12 thermoplastic, PTFE, Carbon steel, Zinc with or without yellow chromate plate PTFE			

Hydra-Clean 1535, 2030 Pressure Washer – Parts

Model 804560, Series B
 Model 804561, Series B



△ 1 Apply sealant to threads

△ 2 Supplied with pump

7008B

Hydra-Clean 1535, 2030 Pressure Washer – Parts

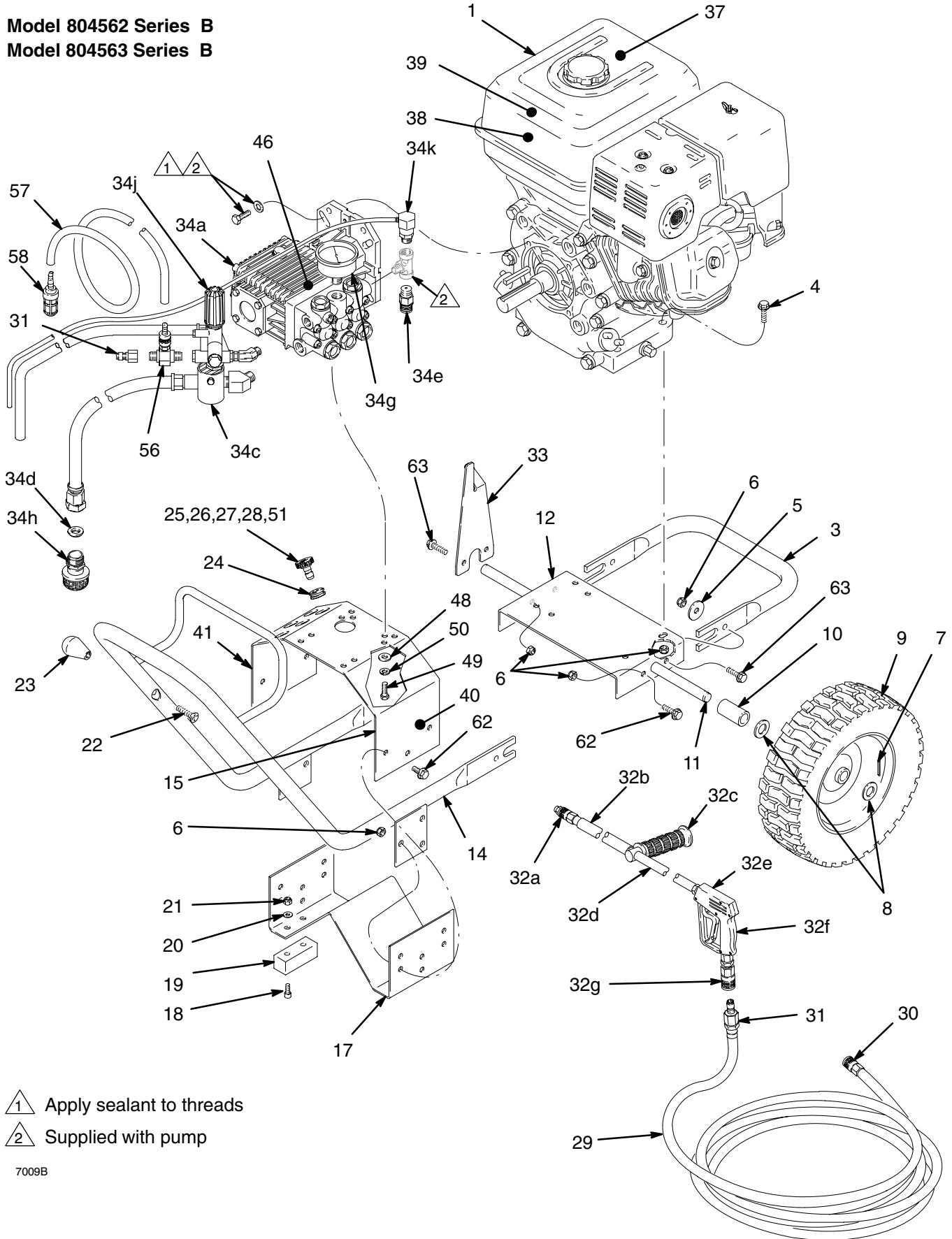
USE ONLY GENUINE GRACO PARTS AND ACCESSORIES

Models 804560, Series B and 804561, Series B

Ref. No.	Part No.	Description	Qty.	Ref. No.	Part No.	Description	Qty.
1	802264	ENGINE, 5.5 hp	1	32b	802863	SLEEVE	1
3	804510	HANDLE, lift	1	32c	802851	HANDLE, wand	1
4	804533	SCREW, cap, flange, 5/16–18	3	32d	801935	WAND, 20"	1
5	804523	WASHER, handle	2	32e	804485	GUN, Spray (see Inst. Manual 308511)	1
6	111040	NUT, Lock 5/16–18	14	32f	801603	NIPPLE, hex	1
7	101545	PIN, cotter 1/8 dia. x 1"	2	32g	804483	QUICK COUPLER, female	1
8	154636	WASHER, plain, 1–3/16	4	33	804529	HOLDER, gun	1
9	804511	WHEEL, pneumatic	2	34		PUMP ASSEMBLY (includes 34a – 34h)	1
10	804512	SPACER	2			Model 1535	1
11	804554	AXLE	1			Model 2030	1
12	804516	PLATE, motor mounting	1	34a		PUMP (see page 22)	1
13	100527	WASHER, plain	2		804399	Model 1535	1
14	804509	HANDLE	1		804504	Model 2030	1
15	804514	PLATE, pump	1	34b		UNLOADER with injector	1
17	804515	PLATE, bottom	1		804575	Model 1535	1
18	100643	SCREW, cap, sch, 14–20 x .75	4		804579	Model 2030	1
19	109059	PAD, rubber	2	34c	804576	VALVE, EZ start	1
20	100086	WASHER, plain, 3/16	4	34d	No number	WASHER, garden hose	1
21	102040	NUT, lock, hex, 1/4–20	4	34e	804535	VALVE, relief	1
22	804530	SCREW, mach, flat hd, 3/8–16	1	34g	804574	SCREEN, inlet	1
23	108789	KNOB	1	34h	804577	GAUGE, pressure, 0–3000 psi	1
24	801012	GROMMET, rubber	6	35	244350	KIT, repair, chemical injector	1
25		TIP, spray		37	290013	LABEL	1
	805555	Model 1535, red 00055	1	38	802363	LABEL, caution	1
	805543	Model 2030, red 0004	1	39	802130	LABEL	1
26		TIP, spray		40	290131	LABEL, warning	1
	805556	Model 1535, yellow 15055	1	41	290133	LABEL	1
	805544	Model 2030, yellow 1504	1	46		TIP, spray	1
27		TIP, spray			805558	Model 1535, white 40055	1
	805557	Model 1535, green 25055	1		805544	Model 2030, white 4004	1
	805545	Model 2030, green 2504	1	47	805634	TIP, chemical injector, black	1
28		LABEL		49	801210	SCREW, hx hd	2
	290139	Model 1535	1	50	100214	WASHER, lock	2
	290142	Model 2030	1	51	804275	TUBE, chemical	1
29	803970	HOSE, high pressure 3/8 x 100'	1	52	801683	STRAINER, chemical	1
30	801569	QUICK COUPLER, 3/8 female	1	54	108842	SCREW, cap, hx hd	1
31	801568	QUICK COUPLER, 3/8 male	2	59	114412	SCREW, flange, hx hd	7
32	804557	GUN & WAND ASSEMBLY (includes 32a – 32g),	1	60	110837	SCREW, flange, hx hd	4
32a	801009	QUICK COUPLER, female 1/4	1				

Hydra-Clean 2540, 3040 Pressure Washer – Parts

Model 804562 Series B
 Model 804563 Series B



7009B

Hydra-Clean 2540, 3040 Pressure Washer – Parts

USE ONLY GENUINE GRACO PARTS AND ACCESSORIES

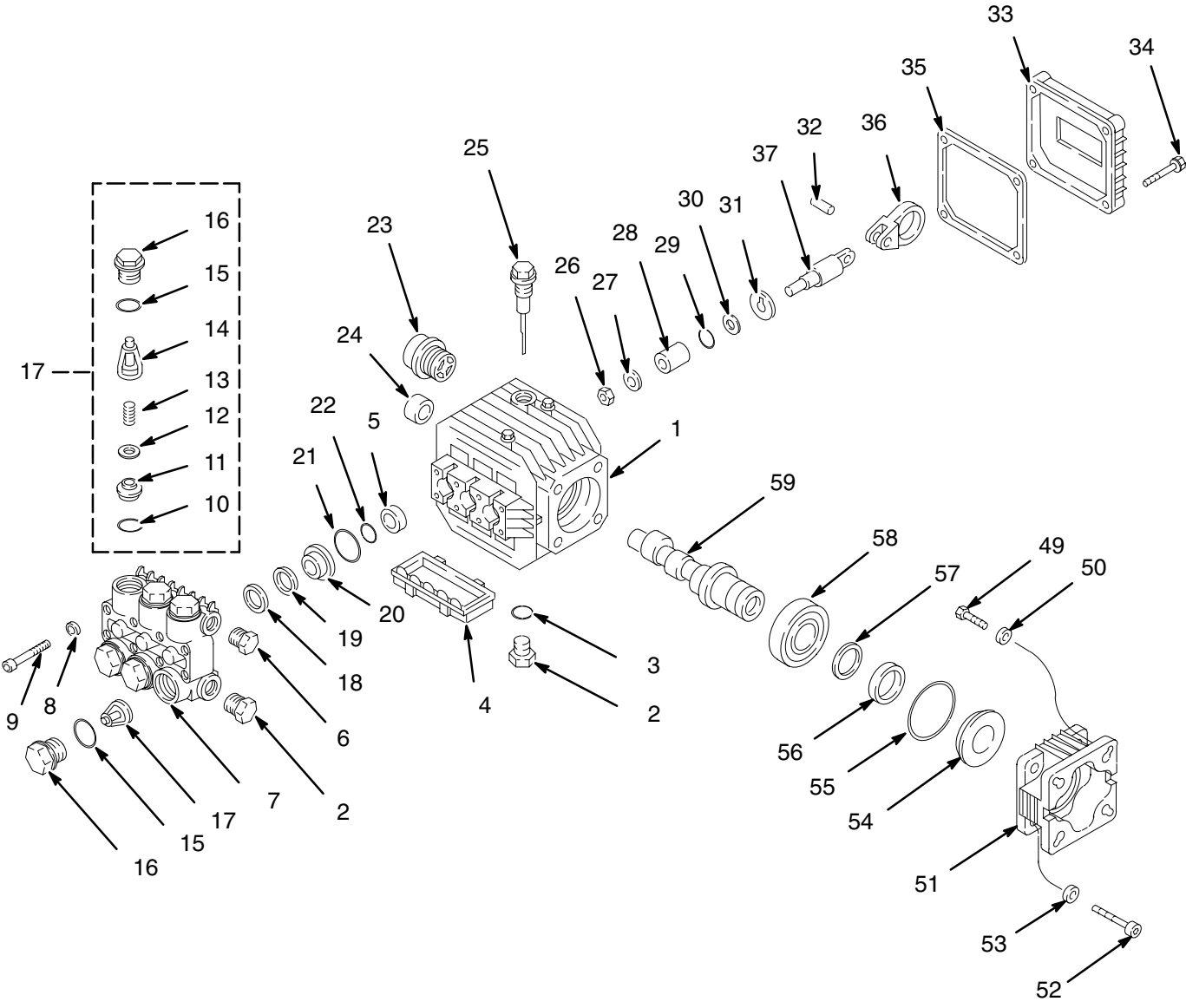
Models 804562, Series B and 804563, Series B

Ref. No.	Part No.	Description	Qty.	Ref. No.	Part No.	Description	Qty.
1	803900	ENGINE, 9 hp, model 2540	1	32a	801009	QUICK COUPLER, female 1/4	1
	803158	ENGINE, 11 hp, model 3040	1	32b	802863	SLEEVE	1
3	804510	HANDLE, lift	1	32c	802851	HANDLE, wand	1
4	110837	SCREW, cap, flange, 5/16–18	4	32d	801935	WAND, 20"	1
5	804523	WASHER, handle	2	32e	804485	GUN, Spray (see Inst. Manual 308–511)	1
6	111040	NUT, Lock 5/16–18	14				
7	101545	PIN, cotter 1/8 dia. x 1"	2	32f	801603	NIPPLE, hex	1
8	154636	WASHER, plain, 1–3/16	4	32g	804483	QUICK COUPLER, female	1
9	804511	WHEEL, pneumatic	2	33	804529	HOLDER, gun	1
10	804512	SPACER	2	34		PUMP ASSEMBLY (includes 34a – 34h)	
11	804554	AXLE	1		804565	Model 2540	1
12	804516	PLATE, motor mounting	1		804566	Model 3040	1
13	100527	WASHER, plain	2	34a	804505	PUMP (see page 25)	1
14	804509	HANDLE	1	34c	802802	FILTER, low pressure	1
15	804514	PLATE, pump	1	34d	No number	WASHER, garden hose	1
17	804515	PLATE, bottom	1	34e	804536	VALVE, relief	
18	100643	SCREW, cap, sch, 14–20 x .75	4	34g	804582	GAUGE, pressure (0–5000 psi)	1
19	109059	PAD, rubber	2	34h	804574	SCREEN, inlet	1
20	100086	WASHER, plain, 3/16	4	34j		UNLOADER	
21	102040	NUT, lock, hex, 1/4–20	4		804580	Model 2540	1
22	804530	SCREW, mach, flat hd, 3/8–16	1		804581	Model 3040	1
23	108789	KNOB	1	34k	804576	VALVE, EZ start	1
24	801012	GROMMET, rubber	6	37	290013	LABEL	1
25		TIP, spray		38	802363	LABEL, caution	1
	805547	Model 2540, red 00045	1	39	802130	LABEL	1
	805543	Model 3040, red 0004	1	40	290131	LABEL, warning	1
26		TIP, spray		41		LABEL	
	805548	Model 2540, yellow 15045	1		290140	Model 2540	1
	805544	Model 3040, yellow 1504	1		290141	Model 3040	1
27		TIP, spray		46	290132	LABEL	1
	805549	Model 2540, green 25045	1	49	801210	SCREW	4
	805545	Model 3040, green 2504	1	50	100214	WASHER, lock	4
28		TIP, spray		51	805634	TIP, chemical, black	1
	805550	Model 2540, white 40045	1	56*	804553	KIT, chemical/injector	1
	805546	Model 3040, white 4004	1	57	804275	TUBE, chemical	1
29		HOSE, high pressure 3/8 x 100'		58	801683	STRAINER, chemical	1
	803970	Model 2540	1	62	114412	SCREW, flange, hx hd	7
	804568	Model 3040	1	63	804533	SCREW, cap, hx hd, flange base	3
30	801569	QUICK COUPLER, 3/8 female	1				
31	801568	QUICK COUPLER, 3/8 male	2				
32	804557	GUN & WAND ASSEMBLY (includes 32a – 32g),	1				

*Repair kit, chemical injector – 244350

Pump Assembly – Parts

Models 800573 and 804578



05001

Pump Assembly – Parts

USE ONLY GENUINE GRACO PARTS AND ACCESSORIES

Models 800573 and 804578

REF NO.	PART NO.	DESCRIPTION	QTY	REF NO.	PART NO.	DESCRIPTION	QTY
1		CRANKCASE	1	25	801659	DIPSTICK	1
2	801484	PLUG	2	26		NUT	3
3	802344	O-RING	1	27		WASHER	3
4		PROTECTOR	1	28		PLUNGER	3
5	KIT 83	SEAL, Oil		29	803918	O-RING	3
6		PLUG	1	30	803919	RING, Back Up	3
7		MANIFOLD	1	31		WASHER, Flinger	3
8		WASHER	8	32		PIN, Connecting Rod	3
9		SCREW	8	33		COVER, Crankcase	1
10	KIT 1	O-RING		34		SCREW	4
11	KIT 1	SEAT, Valve		35	804015	GASKET, Cover	1
12	KIT 1	PLATE, Valve		36		END, Connecting Rod	3
13	KIT 1	SPRING		37		ROD, Connecting	3
14	KIT 1	CAGE, Valve		49		SCREW	4
15	KIT 84	O-RING		50	801652	WASHER	4
16	KIT 84	CAP, Valve		51		FLANGE	1
17	KIT 1	VALVE ASSEMBLY		52		SCREW	4
18	KIT 96,97	RING, Head		53		WASHER	4
19	KIT 96,97	PACKING		54		SPACER	1
20	KIT 96	RETAINER, Packing		55	803268	O-RING	1
21	KIT 96,97	O-RING		56	804018	SEAL, Oil	1
22	KIT 96,97	O-RING		57		RING, Snap	1
23	802345	GAUGE, Sight	1	58		BEARING	1
24		BEARING	1	59		CRANKSHAFT	1

Kit No.	Repair Kit Part No.	Ref No.	Description	Qty.
1	801472 Valve Assembly	10	O-RING	6
		11	SEAT, Valve	6
		12	PLATE, Valve	6
		13	SPRING	6
		14	CAGE, Valve	6
		or 17*	VALVE ASSEMBLY	6
83	804033 Oil Seal	5	SEAL, Oil	3
84	804034 Valve Cap	15	O-RING	6
		16	CAP, Valve	6
96	804036 Packing Assembly	18	RING, Head	1
		19	PACKING	1
		20	RETAINER,	1
		21	Packing	1
		22	O-RING O-RING	1
97	804037 Packing	18	RING, Head	3
		19	PACKING	3
		21	O-RING	3
		22	O-RING	3

* Item 17 consists of items 10 through 14.
See Pump Assembly illustration on previous page.

Pump Assembly – Parts

USE ONLY GENUINE GRACO PARTS AND ACCESSORIES

MODEL 804565 & 804566

REF NO.	PART NO.	DESCRIPTION	QTY	REF NO.	PART NO.	DESCRIPTION	QTY
1		HEAD, Pump	1	30		WASHER	3
2	801651	SCREW	8	31	803919	RING, Anti-Extrusion	3
3	801652	WASHER	8	32	803918	O-RING	3
4	KIT 123	O-RING		33	804415	PISTON	3
5	KIT 123	SEAT, Valve		34		WASHER	3
6	KIT 123	VALVE		35		NUT	3
7	KIT 123	SPRING		40	KIT 130	O-RING	
8	KIT 123	CAGE, Valve		41	KIT 130	RETAINER, Packing	
9	KIT 124	O-RING		42	KIT 130	RING, Intermediate	
10	KIT 124	CAP		43	KIT 130	PACKING	
11	KIT 123	VALVE ASSEMBLY		44	KIT 130	PACKING	
12		SCREW	8	45	KIT 130	RING, Head	
13		COVER, Bearing	2	46		SCREW, Cap	1
14		SPACER	1	47	801482	SCREW, Cap	1
15	803268	O-RING	1	48	801485	WASHER	1
16		BEARING	2	49		WASHER	1
17	KIT 23	SEAL, Oil		75		RING, Retaining	1
18		CRANKCASE	1	76		CRANKSHAFT	1
19	801659	DIPSTICK	1	77		BEARING	1
22		GUIDE, Piston	3	78		O-RING	1
23		ROD, Connecting	3	79		SCREW	4
24		O-RING	1	80		WASHER	4
25		COVER, Rear	1	81		FLANGE	1
26		SCREW	5	82	804422	SEAL, Oil	1
27	801488	O-RING	1	83		WASHER	4
28		SCREW, Cap	1	84		SCREW	4
29		PIN	3				

Kit No.	Repair Kit Part No.	Ref. No.	Description	Qty.
23	801658 Oil Seal	17	SEAL, Oil	3
123	804402 Valve Assembly	4 5 6 7 8 or 11*	O-RING SEAT, Valve VALVE SPRING CAGE, Valve VALVE ASSEMBLY	6 6 6 6 6 6
124	804403 Valve Cap	9 10	O-RING CAP	6 6
130	804404 Packing Assembly	40 41 42 43 44 45	O-RING RETAINER, Packing RING, Intermediate PACKING PACKING RING, Head	1 1 1 1 2 2

* Item 11 consists of items 4 through 8.
See Pump Assembly illustration on previous page.

Graco Warranty

Graco warrants all equipment listed in this manual which is manufactured by Graco and bearing its name to be free from defects in material and workmanship on the date of sale by an authorized Graco distributor to the original purchaser for use. With the exception of any special extended or limited warranty published by Graco, Graco will, for a period of twelve months from the date of sale, repair or replace any part of the equipment determined by Graco to be defective. This warranty applies only when the equipment is installed, operated and maintained in accordance with Graco's written recommendations.

This warranty does not cover, and Graco shall not be liable for general wear and tear, or any malfunction, damage or wear caused by faulty installation, misapplication, abrasion, corrosion, inadequate or improper maintenance, negligence, accident, tampering, or substitution of non-Graco component parts. Nor shall Graco be liable for malfunction, damage or wear caused by the incompatibility of Graco equipment with structures, accessories, equipment or materials not supplied by Graco, or the improper design, manufacture, installation, operation or maintenance of structures, accessories, equipment or materials not supplied by Graco.

This warranty is conditioned upon the prepaid return of the equipment claimed to be defective to an authorized Graco distributor for verification of the claimed defect. If the claimed defect is verified, Graco will repair or replace free of charge any defective parts. The equipment will be returned to the original purchaser transportation prepaid. If inspection of the equipment does not disclose any defect in material or workmanship, repairs will be made at a reasonable charge, which charges may include the costs of parts, labor, and transportation.

Graco's sole obligation and buyer's sole remedy for any breach of warranty shall be as set forth above. The buyer agrees that no other remedy (including, but not limited to, incidental or consequential damages for lost profits, lost sales, injury to person or property, or any other incidental or consequential loss) shall be available. Any action for breach of warranty must be brought within two (2) years of the date of sale.

GRACO MAKES NO WARRANTY, AND DISCLAIMS ALL IMPLIED WARRANTIES OF MERCHANTABILITY AND FITNESS FOR A PARTICULAR PURPOSE IN CONNECTION WITH ACCESSORIES, EQUIPMENT, MATERIALS OR COMPONENTS SOLD BUT NOT MANUFACTURED BY GRACO. These items sold, but not manufactured by Graco (such as electric motors, gas engines, switches, hose, etc.), are subject to the warranty, if any, of their manufacturer. Graco will provide purchaser with reasonable assistance in making any claim for breach of these warranties.

In no event will Graco be liable for indirect, incidental, special or consequential damages resulting from Graco supplying equipment hereunder, or the furnishing, performance, or use of any products or other goods sold hereto, whether due to a breach of contract, breach of warranty, the negligence of Graco, or otherwise.

FOR GRACO CANADA CUSTOMERS

The parties acknowledge that they have required that the present document, as well as all documents, notices and legal proceedings entered into, given or instituted pursuant hereto or relating directly or indirectly hereto, be drawn up in English. Les parties reconnaissent avoir convenu que la rédaction du présente document sera en Anglais, ainsi que tous documents, avis et procédures judiciaires exécutés, donnés ou intentés à la suite de ou en rapport, directement ou indirectement, avec les procédures concernées.

ADDITIONAL WARRANTY COVERAGE

Graco does provide extended warranty and wear warranty for products described in the "Graco Contractor Equipment Warranty Program."

Graco Phone Number

TO PLACE AN ORDER, contact your Graco distributor, or call this number to identify the distributor closest to you:
1-800-690-2894.

*All written and visual data contained in this document reflects the latest product information available at the time of publication.
Graco reserves the right to make changes at any time without notice.*

Sales Offices: Minneapolis, Detroit
International Offices: Belgium, Korea, Hong Kong, Japan

GRACO INC. P.O. BOX 1441 MINNEAPOLIS, MN 55440-1441

www.graco.com

PRINTED IN USA 308736 September 1997, Revised October 2000