

Parts






Ultimate™ Mx II 695/795/1095/1595

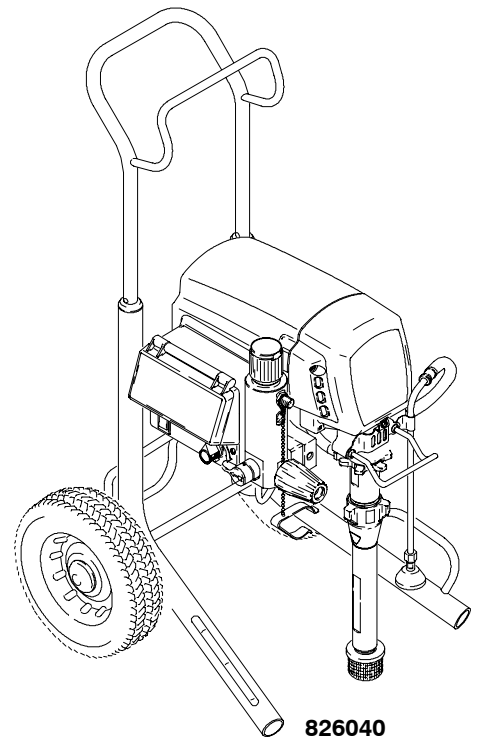
309945M

EN

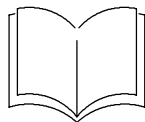
3300 psi (228 bar, 22.8 MPa) Maximum Working Pressure

Vac	Model	Standard/ Premium		
120 North America 	695	Standard	826048	826047
		Premium	826041	826040
	795	Standard		826049
		Premium		826042
	1095	Standard		826050
		Premium		826044
	1595	Standard		826054 826051*
		Premium		826053 826045*

* Not ETL Approved



Related manuals



..... 309935



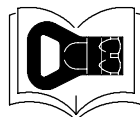
..... 309639



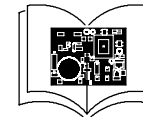
..... 309942



..... 310643



..... 309055

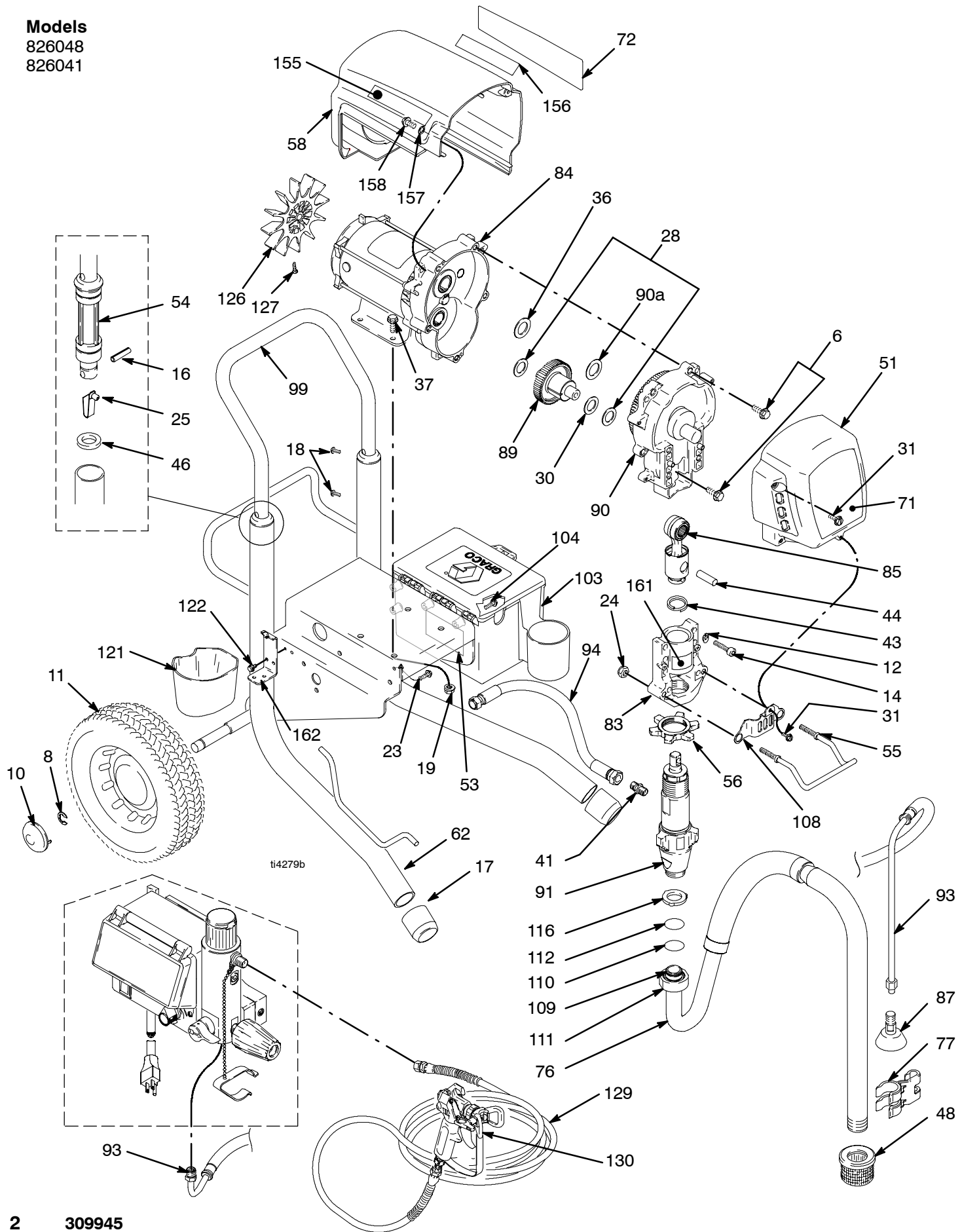


..... 309709

PROVEN QUALITY. LEADING TECHNOLOGY.

Parts Drawing - Sprayer

Models
826048
826041



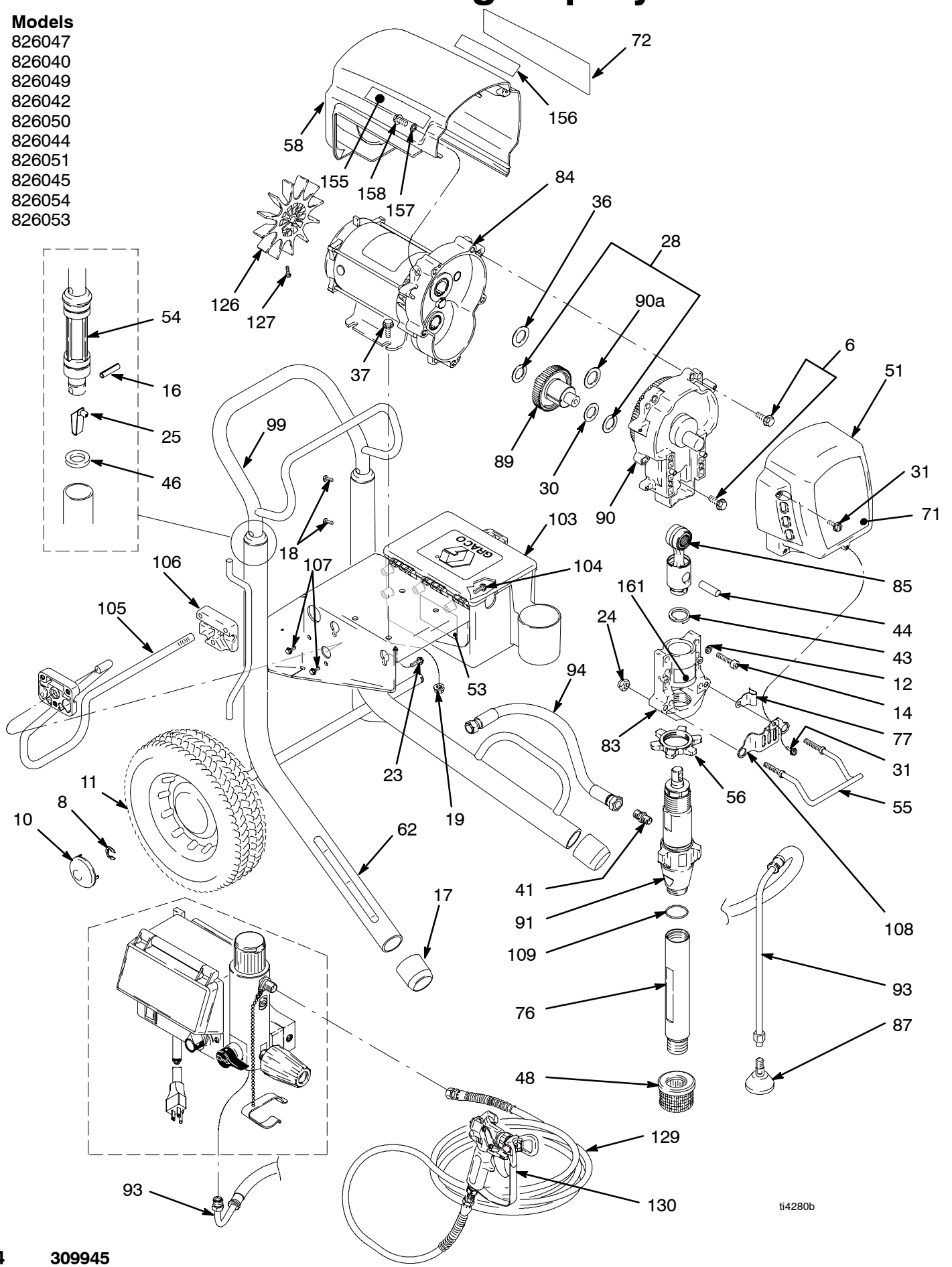
Parts List - Sprayer

Ultimate Mx II 695: 826048, B; 826041, B

Ref No.	Part No.	Description	Qty	Ref No.	Part No.	Description	Qty
6	15C753	SCREW, mach, torx, hex wash hd	5	85	241008	ROD, connecting; includes 43	1
8	101242	RING, retaining, ext	2	87	241920	DEFLECTOR, threaded	1
10	104811	CAP, hub	2	89	287289	GEAR, combination; includes 28, 30	1
11	106062	WHEEL, semi pneumatic	2	90	287283	HOUSING, drive; includes 6, 36, 90a	1
12	106115	WASHER, lock spring (hi-collar)	4	90a	107089	WASHER, thrust	1
14	110141	SCREW, cap, socket hd	4	91	248204	PUMP, displacement; includes 109 Manual, 310643	1
16	108068	PIN, spring	2	93	244240	HOSE, drain; includes 87	1
17	15C871	CAP, leg	2	94	15D049	HOSE	1
18	109032	SCREW, mach, pnh	4	99	15G023	HANDLE, cart	1
19	110996	NUT, hex, flanged	4	103†	287253	TOOL BOX; includes 104	1
23	110963	SCREW, cap, flng hd	2	104†	118852	SCREW, hex washer hd	3
24	112746	NUT, hex	2	108	15C859	SHIELD, pump rod	1
25	112827	BUTTON, snap	2	109	117559	O-RING	2
28	114672	WASHER, thrust	2	110	15C981	WASHER, suction swivel	1
30	114699	WASHER, thrust	1	111	15C980	NUT, jam	1
31	118444	SCREW, machine hex washer head	5	112	118505	RING, retaining, external	1
36	116191	WASHER, thrust	1	116	115099	WASHER, garden hose	1
37	100057	SCREW, hex hd	4	121	276975	CUP, drain	1
41	162453	NIPPLE, (1/4 npsm x 1/4 npt)	1	122	114423	SCREW, hex hd	2
43	176817	SPRING, retaining	1	126	15D088	FAN, motor	1
44	176818	PIN, str, hdls	1	127	115477	SCREW, mach., torx pan hd	1
46	183350	WASHER,	2	128▲	222385	TAG, WARNING, (not shown)	1
48	189920	STRAINER, (1-11 1/2 npsm)	1	129†	240794	HOSE, cpld, 1/4x 50', unpkgd	1
51	287291	COVER, drive, painted; includes 31	1	130†	824987	GUN, contractor Manual 309639	1
54	192027	SLEEVE, cart	2	155		LABEL, model, left	
55	15D416	HANGER, pail	1		15D722	Premium	1
56	192723	NUT, retaining	1		15D724	Standard	1
58		SHIELD, motor, painted; includes 31		156		LABEL, model, right	
	287281	695	1		15D721	Premium	1
	287282	795	1		15D723	Standard	1
62	287168	FRAME, cart, Lo-boy	1	157	276980	GROMMET	2
71	824995	LABEL, 695, front	1	158	119250	SCREW, shoulder	2
72	824996	LABEL, 695, side	1	161	187436	LABEL, torque	1
76	248216	HOSE, suction; includes 109, 110, 111, 112, 116	1	162	15F952	BRACKET, suction	1
77	15D000	CLIP, drain line	1	▲ Replacement Danger and Warning labels, tags, and cards are available at no cost.			
79	206994	FLUID, TSL, 8 oz (not shown)	1	† Premium sprayers			
83	240523	HOUSING, bearing, includes 24, 55	1				
84	287197	MOTOR, electric; includes 126, 127					

Parts Drawing - Sprayer

Models
 826047
 826040
 826049
 826042
 826050
 826044
 826051
 826045
 826054
 826053



ti4280b

Parts List - Sprayer

Ultimate Mx II 695: 826047, 826040; Ultimate Mx II 795: 826049, 826042

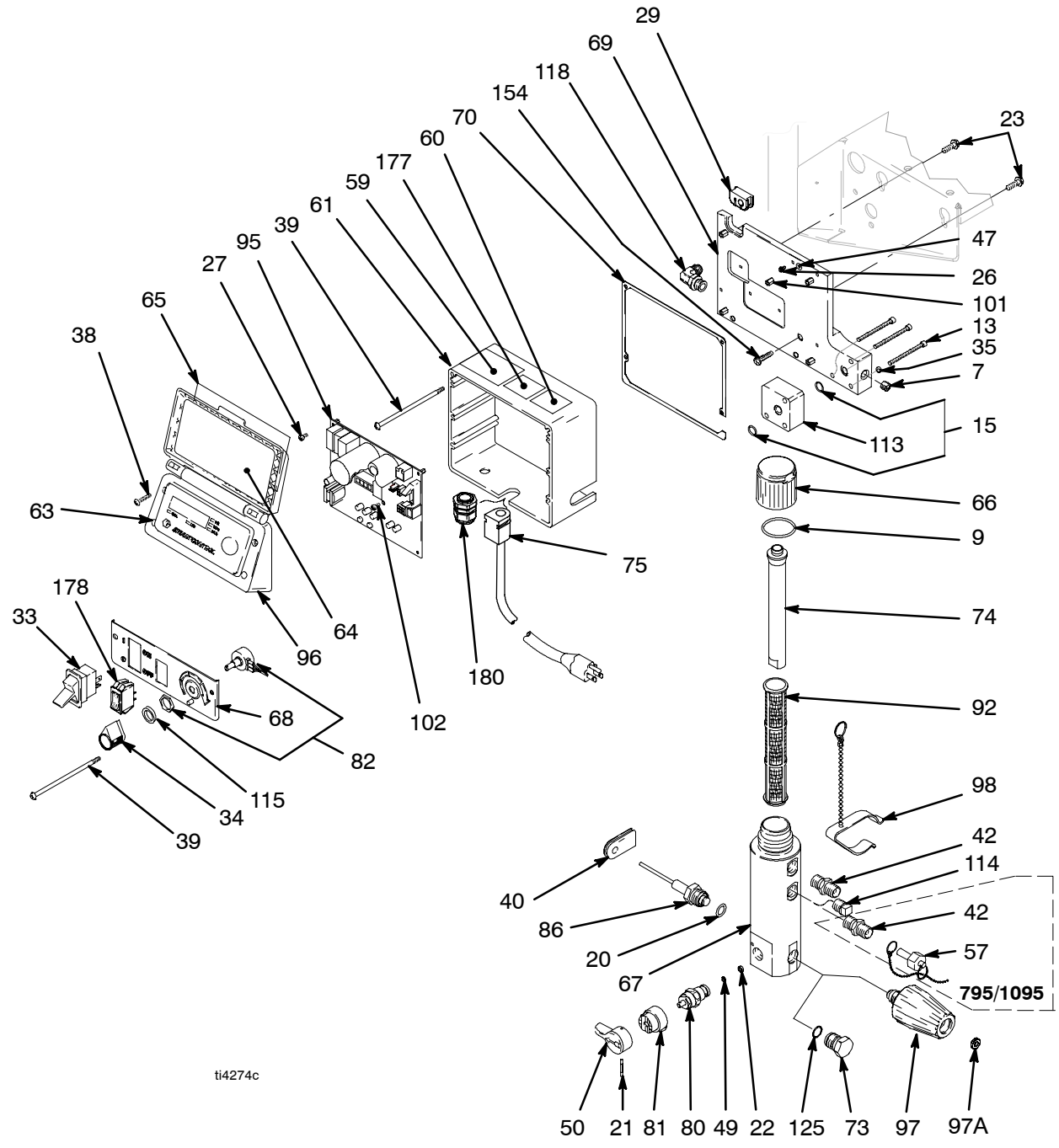
Ultimate Mx II 1095: 826050, 826044; Ultimate Mx II 1595: 826051, 826045, 826054, 826053

Ref .	Part No.	Description	Qty	Ref	Part No.	Description	Qty
6	15C753	SCREW, mach, torx, hex wash hd	5	76		TUBE, intake; includes 109	
8	101242	RING, retaining, ext.	2		248214	695/795	1
10	104811	CAP, hub	2		248215	1095/1595	1
11		WHEEL, semi pneumatic		77	197124	CLIP, spring	1
	106062	695/795	2	79	206994	FLUID, TSL, 8 oz (not shown)	1
	179811	1095/1595	2	83		HOUSING, bearing; includes 24, 55	
12	106115	WASHER, lock spring (hi-collar)	4		240523	695/795	1
14		SCREW, cap, socket hd			241015	1095/1595	1
	110141	695/795	4	84		MOTOR, electric; includes 126, 127	
	114666	1095/1595	4		287197	695	1
16	108068	PIN, spring straight	2		287198	795	1
17		CAP, leg			287199	1095	1
	15C871	695/795	2		287200	1595	1
	276974	1095/1595	2	85		ROD, connecting; includes 43	
18		SCREW, mach, pnh			241008	695/795	1
	109032	695/795	4		241279	1095/1595	1
	108795	1095/1595	4	87	241920	DEFLECTOR, threaded	1
19	110996	NUT, hex, flanged	4	89		GEAR, combination; includes 28, 30	
23	110963	SCREW, cap, flng hd	2		287289	695/795	1
24	112746	NUT, hex	2		287290	1095/1595	1
25	112827	BUTTON, snap	2	90		HOUSING, drive; includes 6, 36, 90a	
28	114672	WASHER, thrust	2		287283	695	1
30	114699	WASHER, thrust	1		287284	795	1
31	118444	SCREW, mach hex washer head	5		287294	1095	1
36		WASHER, thrust			287295	1595	1
	116191	695/795	1	90a	107089	WASHER, thrust	1
	116192	1095/1595	1	91		PUMP, displacement	
37	100057	SCREW, hex hd	4			Manual 310643	
41		NIPPLE, (1/4 npsm x 1/4 npt)			248204	695/795	1
	162453	695/795	1		248205	1095/1595	1
	162485	1095/1595	1	93	244240	HOSE, coupled; includes 87	1
43		SPRING, retaining		94		HOSE	
	176817	695/795	1		15D049	695/795	1
	183169	1095/1595	1		15D360	1095/1595	1
44		PIN, str, hdls		99	245245	HANDLE, cart	1
	176818	695/795	1	103†	287253	TOOL BOX; includes 104	1
	183210	1095/1595	1	104†	118852	SCREW, hex washer hd	3
46	183350	WASHER	2	105		HANGER, stand, cart	
48	189920	STRAINER, (1-11 1/2 npsm)	1		15D281	695/795	1
51		COVER, drive, painted; includes 157, 158			15C858	1095/1595	1
	287291	695/795	1	106	15C982	CAM, cart	2
	287292	1095/1595	1	107	114531	SCREW, flange, hex	4
54		SLEEVE, cart		108		SHIELD, pump rod	
	192027	695/795	2		15C859	695/795	1
	191084	1095/1595	2		15C762	1095/1595	1
55	192719	HANGER, pail	1	109	118494	O-RING	1
56		NUT, retaining		126	15D088	FAN, motor	1
	192723	695/795	1	127	115477	SCREW, mach, torx pan hd	1
	193031	1095/1595	1	128▲	222385	TAG, WARNING (not shown)	1
58		SHIELD, motor, painted; includes 31		129†	243341	HOSE, cpd, 1/4 in. x 50 ft	1
	287281	695	1	130†	824987	GUN, Contractor	1
	287282	795/1095/1595	1			Manual 309640	
62		FRAME, cart		155		LABEL, model, left	
	287165	695/795	1		15D722	Premium	1
	287207	1095/1595	1		15D724	Standard	1
71		LABEL, front		156		LABEL, model, right	
	824995	695	1		15D721	Premium	1
	824998	795	1		15D723	Standard	1
	825011	1095	1	157	276980	GROMMET	2
	825014	1595	1	158	119250	SCREW, shoulder	2
72		LABEL, side		161	187436	LABEL, torque	1
	824996	695	1				
	824999	795	1				
	825012	1095	1				
	825015	1595	1				

▲ Replacement Danger and Warning labels, tags, and cards are available at no cost.

† Premium sprayers

Parts Drawing - Sprayer



ti4274c

Parts List - Sprayer

Ultimate Mx II 695/795/1095/1595

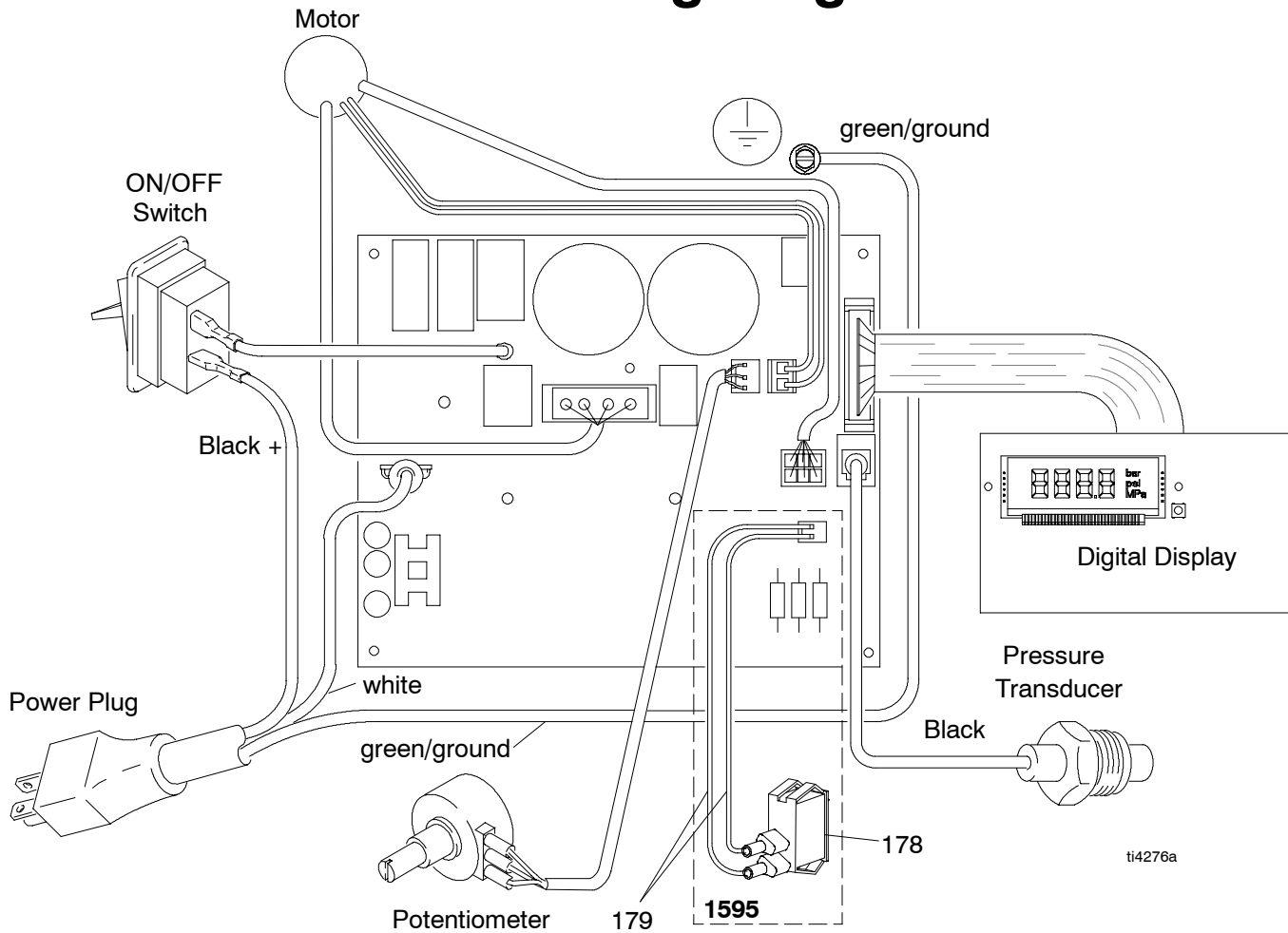
REF NO.	PART NO.	DESCRIPTION	QTY	REF NO.	PART NO.	DESCRIPTION	QTY
7	100721	PLUG, pipe	1	73	248314	PLUG, AutoClean (Standard)	1
9	117285	O-RING	1			includes 125	
13	C19817	SCREW, cap, socket hd	3	74	15C766	TUBE, diffusion	1
15	107505	O-RING	2	75		CORD, power	
20	111457	O-RING	1		15D029	695/795/1095	1
21	15C972	PIN, grooved	1		15E357	1595, ETL Approved	1
22	277364	GASKET, seat, valve	1		15E355	1595, not ETL Approved	1
23	110963	SCREW, cap, flg hd	2	80	235014	VALVE, drain; includes 22, 49	1
26	114391	SCREW, grounding	1	81	224807	BASE, valve	1
27	113045	SCREW, sems, mach, phil truss	5	82	236352	POTENTIOMETR, adj, pressure	1
29	15D087	GROMMET	1	86	243222	TRANSDUCER, press ctrl; includes 20	1
33	15C979	SWITCH, rocker	1	92		FILTER, fluid	
34	116167	KNOB, potentiometer	1		244071	30 mesh	1
35	105510	WASHER, lock, spring (hi-collar)	3		244067	60 mesh, original equipment	1
38	116252	SCREW, #8 taptite phil	4		244068	100 mesh	1
39	112381	SCREW, mach, pan hd	4		244069	200 mesh	1
40	15D033	GROMMET, transducer	1	95	287247	CONTROL, bd, 120V;	1
42		ADAPTER				(includes 27, 102)	
	164672	695	1	96		COVER, control	
	164672	795/1095/1595	2		246560	Standard	1
47	186620	LABEL, symbol, ground	1		287286	Premium; includes 38, 63, 64, 65	1
49	187615	SEAT, valve	1	97	287293	VALVE, AutoClean; includes 97a	1
50	15C780	HANDLE, valve, drain	1	97a	15F950	GASKET	1
57	240131	STEM, plug, packless	1	98	244346	KIT, repair, clamp, trigger	1
59▲	15D523	LABEL, DANGER	1	101	15D160	STUD, board	5
60▲	195833	LABEL, WARNING	1	102	114420	SCREW, mach, pnh, sems	3
61		BOX, control		113	15F844	SPACER, filter, base	1
	15C854	695/795/1095	1	114	104813	PLUG, pipe	1
	15E462	1595	1	115	15C973	GASKET	1
63	198648	LABEL, LCD (Premium)	1	118	116793	FITTING, elbow, hydraulic	1
64	15D063	LABEL, instruction	1	125	15D541	GASKET (Standard)	1
65		LABEL, cover, control box		154	115478	SCREW, Torx, pan hd	1
	196843	Premium	1	177	198278	LABEL, warning	1
	15B705	Standard	1	178‡	116099	SWITCH, 15A/20A	1
66	287285	CAP, filter; includes 9, 74	1	179‡	15E390	CONNECTOR	1
67	15C838	BASE, filter	1	180‡	116171	BUSHING	1
68		PANEL, control					
	15C947	695/795/1095	1				
	15E354	1595	1				
69	15C840	PLATE, power bar	1				
70	15D036	GASKET, control box	1				

▲ Replacement Danger and Warning labels, tags, and cards are available at no cost.

† Premium sprayers

‡ 1595 sprayers

Wiring Diagram



TO PLACE AN ORDER OR FOR SERVICE, contact your Graco distributor, or call this number to identify the distributor near you: **1-800-690-2894 Toll Free**

All written and visual data contained in this document reflect the latest product information available at the time of publication. Graco reserves the right to make changes at any time without notice.

For patent information, see www.graco.com/patents
Original instructions. This manual contains English. MM 309945

Graco Headquarters: Minneapolis

International Offices: Belgium, Korea, China, Japan

GRACO INC. AND SUBSIDIARIES P.O. BOX 1441 MINNEAPOLIS, MN 55440-1441 USA
Copyright 2003, Graco Inc. All Graco manufacturing locations are registered to ISO 9001.

www.graco.com

Revised May 2013