

Ultra[®] Max II

311364J

EN

- For application of architectural paints and coatings. -

3300 psi (228 bar, 22.8 MPa) Maximum Working Pressure



Important Safety Instructions

Read all warnings and instructions in this manual. Save these instructions.

Vac	Model	Type	Lo-Boy	Hi-Boy
110 UK	695			24M695
	795			24M698
	1095			24M702

Parts List - Sprayer

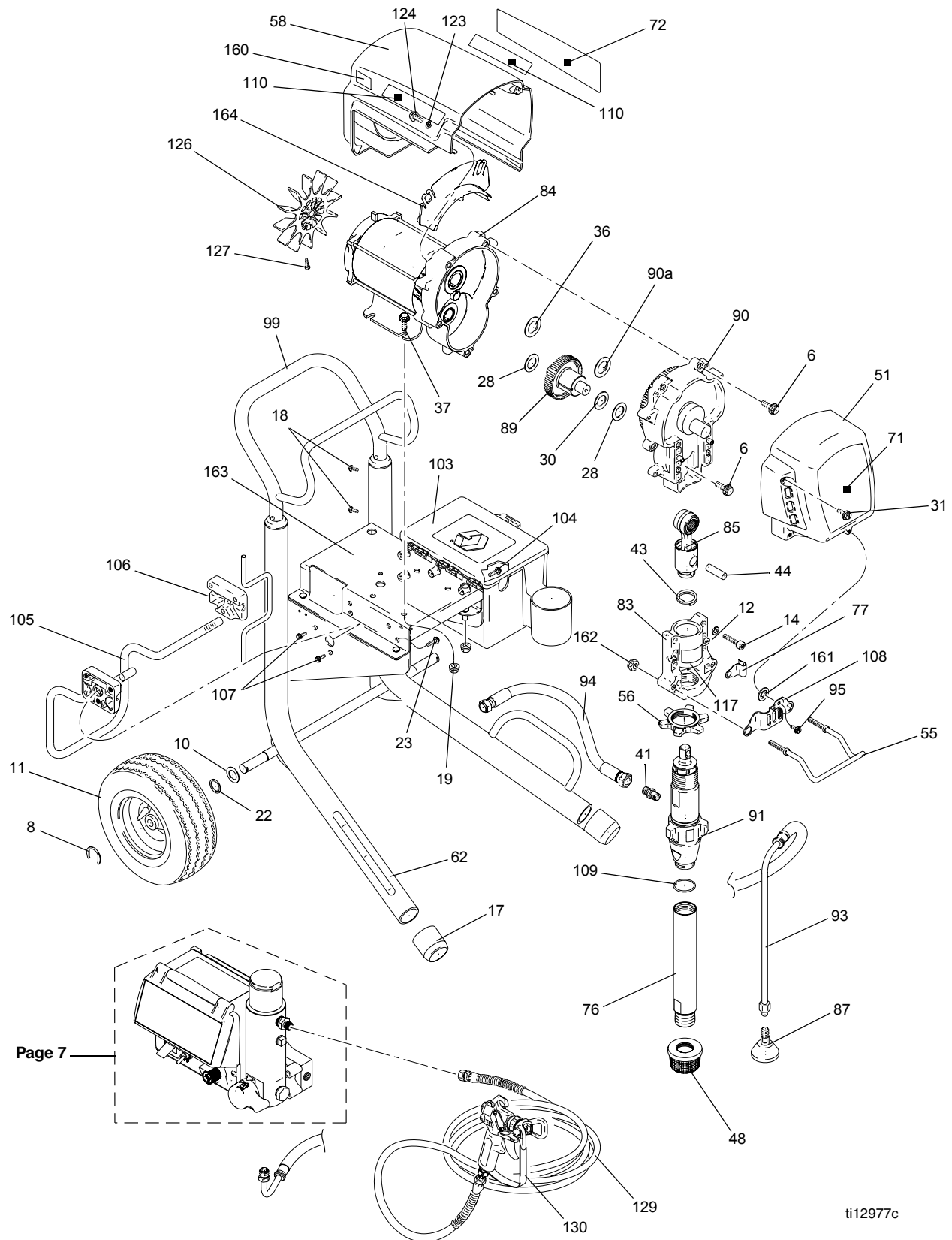
Ultra Max II 695/795 Hi-Boy:

Ref.	Part	Description	Qty.	Ref.	Part	Description	Qty.
6	15C753	SCREW, mach, torx, hex	5	87	241920	DEFLECTOR, threaded	1
8	15E891	CLIP, retaining	2	89	287289	GEAR, combination;	1
10	156306	WASHER, flat	2			<i>includes 28, 30</i>	
11*	119420	WHEEL, pneumatic	2	90		HOUSING, drive, M1;	1
12	106115	WASH, lock, spring	4			<i>includes 6, 36, 90a</i>	
14	107210	SCREW, cap, socket hd	4		287283	695	
17	15C871	CAP, leg	2		287284	795	
18	109032	SCREW, mach, pnh	4	90a	107089	WASHER, thrust	1
19	112746	NUT, hex, flanged	8	91	248204	PUMP, displacement 695/795;	1
22	116038	WASHER, wave spring	2			<i>includes 109</i>	
23	110963	SCREW, cap, flng hd	2	93	244240	HOSE, coupled; <i>includes 87</i>	1
25	112827	BUTTON, snap	2	94	15D049	HOSE, coupled, 1/4 x 15.75	1
28	114672	WASHER, thrust	2	95	114000	SCREW, control housing	1
30	114699	WASHER, thrust	1	99	287489	HANDLE, cart	1
31	118444	SCREW, machine, hex washer hd	4	103	287253	TOOLBOX; includes 104	1
36	116191	WASHER, thrust	1	104	118852	SCREW, hex washer hd	3
37	100057	SCREW, cap, hex hd	4	105	15D281	HANGER, stand, cart	1
41	162453	FITTING, (1/4 NPSM x 1/4 NPT)	1	106	15C982	CAM, cart	2
43	176817	SPRING, retaining	1	107	114531	SCREW, mach, hex washer	4
44	176818	PIN, str, hdls	1	108	15C859	SHIELD, pump rod	1
48	189920	STRAINER, (1-11 1/2 NPSM)	1	109	118494	PACKING, o-ring	1
51	287291	COVER, drive, plastic, painted;	1	110	16D585	LABEL, Ultra Premium, sides	2
		<i>includes 31, 95</i>		117	187436	LABEL, torque	1
55	16C457	HANGER, pail	1	123	276980	GROMMET, cover	2
56	192723	NUT, retaining	1	124	119250	SCREW, shoulder, hex, washer	2
58		SHIELD, motor, painted;	1	126	15D088	FAN, motor	1
		<i>includes 31</i>		127	115477	SCREW, mach, torx, pan, hd	1
	287281	695		128▲	222385	TAG, WARNING (not shown)	1
	287282	795		129	240794	HOSE, cpld, 1/4 in. x 50 ft	1
62	288605	FRAME, cart	1	130	288475	GUN, UK, Manual 311861	1
71		LABEL, UltraMax II 695/795	1	160	15Y118	LABEL, Made in USA	1
	15K374	695		161	124172	WASHER, retaining, nylon, 10-32	1
	15D068	795		162	112746	NUT, hex	2
72		LABEL, UltraMax II 695/795	1	163	288899	SHELF, PEM, assy	1
	15K381	695		164	278075	BAFFLE	1
	15D069	795		170▲	243301	LABEL, set, stpro, int'l	1
76	248214	TUBE, intake; <i>includes 109</i>	1	172	238358	HOSE, cpld, 3/16 in. x 3 ft	1
77	278204	CLIP, spring	1				
83	240523	HOUSING, bearing	1				
84		MOTOR, electric	1				
	287197	695 Series A - C					
	257185	695 Series D					
	287198	795 Series A, B					
	257186	795 Series C					
85	241008	ROD, connecting; <i>includes 43</i>	1				

* 253132 KIT, repair, tube, 11 in.

▲ Extra Danger & Warning tags & labels available free.

Parts Drawing 695/795 Hi-Boy Sprayer



ti12977c

Parts List - Sprayer

Ultra Max II: 1095

Ref.	Part	Description	Qty.	Ref.	Part	Description	Qty.
6	15C753	SCREW, mach, torx, hex	5	85	287472	ROD, connecting; <i>includes 43, 44</i>	1
8	15E891	CLIP, retaining	2	87	241920	DEFLECTOR, threaded	1
10	156306	WASHER, flat	2	89	287290	GEAR, combination; <i>includes 28, 30</i>	1
11*	119509	WHEEL, pneumatic	2	90	287294	HOUSING, drive, M1; <i>includes 6, 36, 90a</i>	1
12	106115	WASH, lock, spring	4	90a	114671	WASHER, thrust	1
14	114666	SCREW, cap, socket hd	4	91	287513	PUMP, displacement; <i>includes 41, 76, 109</i>	1
16	101354	PIN, spring, straight	2	93	287952	HOSE, drain; <i>includes 87</i>	1
17	276974	CAP, leg	2	94	287803	HOSE, coupled	1
18	108795	SCREW, mach, pnh	4	99	245245	HANDLE, cart	1
19	112746	NUT, hex, flanged	4	103	287253	TOOLBOX; <i>includes 104</i>	1
20	111457	O-RING	1	104	118852	SCREW, hex washer hd	3
22	116038	WASHER, wave spring	2	105	15C858	HANGER, stand, cart	1
23	110963	SCREW, cap, flng hd	2	106	15C982	CAM, cart	2
25	112827	BUTTON, snap	2	107	114531	SCREW, mach, hex washer	4
28	114672	WASHER, thrust	2	109	118494	PACKING, o-ring	1
30	114699	WASHER, thrust	1	110	16D585	LABEL, Ultra Premium, sides	2
31	118444	SCREW, machine, hex washer hd	4	123	276980	GROMMET, cover	2
36	116192	WASHER, thrust	1	124	119250	SCREW, shoulder, hex, washer	2
37	100057	SCREW, cap, hex hd	4	126	15D088	FAN, motor	1
41	15E802	FITTING, pump, quick disc	1	127	115477	SCREW, mach, torx, pan, hd	1
43	119778	SPRING, retaining	1	128▲	222385	TAG, WARNING (not shown)	1
44	15F110	PIN, pump	1	129	240794	HOSE, cpld, 1/4 in. x 50 ft	1
46	183350	WASHER	2	130	288475	GUN, UK, Manual 311861	1
48	189920	STRAINER, (1-11 1/2 NPSM)	1	160	15Y118	LABEL, Made in USA	1
51	287292	COVER, drive, plastic, painted	1	163	288899	SHELF, PEM, assy	1
54	187604	SLEEVE, cart	2	164	278075	BAFFLE	1
55	119790	PACKING, o-ring	1	170	243301	LABEL, set, stpro, int'l	1
58	287282	SHIELD, motor, painted	1	172	238358	HOSE, cpld, 3/16 in. x 3 ft	1
62	288663	FRAME, cart 1095	1				
71	15D071	LABEL, UltraMax II 1095	1				
72	15D072	LABEL, UltraMax II 1095	1				
76	248215	TUBE, intake; <i>includes 109</i>	1				
83	287933	HOUSING, bearing	1				
84		MOTOR, electric; <i>includes 126, 127</i>	1				
	287199	Series A					
	257187	Series B					

* 253131 KIT, repair, tube, 13 in.

▲ Extra Danger & Warning tags & labels available free.

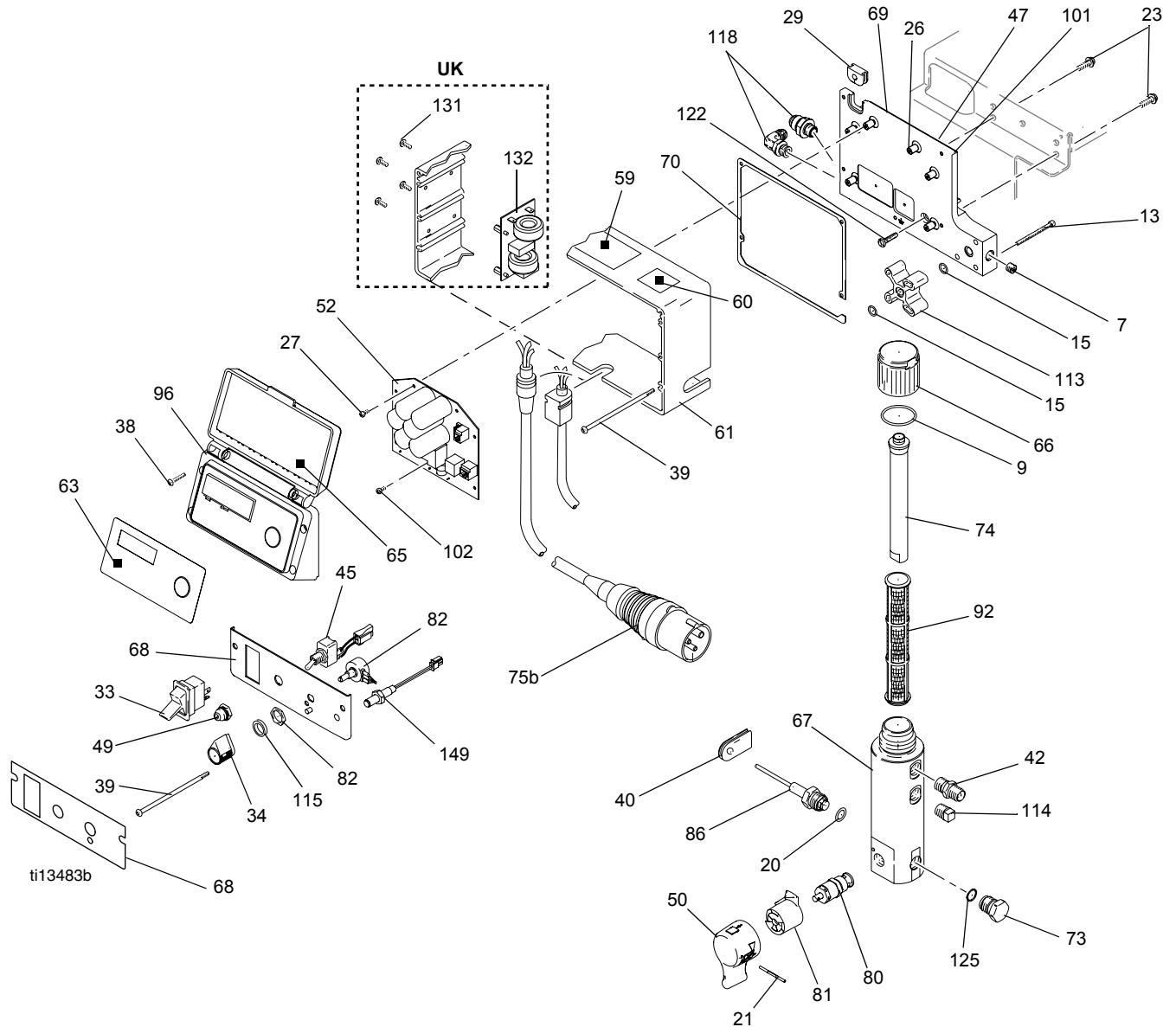
Parts List - Sprayer

Ultra Max II: 695 Hi-Boy; 795 Hi-Boy; 1095
(Models with SIX large capacitors on control board)

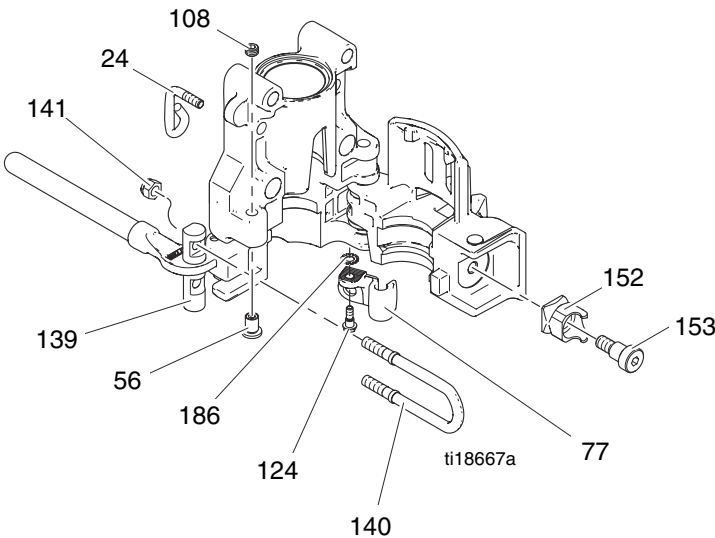
Ref.	Part	Description	Qty.	Ref.	Part	Description	Qty.
7	100721	PLUG, pipe	1	70	15D036	GASKET, control box	1
9	117285	PACKING, o-ring	1	73	248314	PLUG, AutoClean standard; <i>includes 125</i>	
13	C19817	SCREW, cap, socket	3	74	15C766	TUBE, diffusion	1
15	107505	PACKING, o-ring	2	75		CORD, power	1
20	111457	PACKING, o-ring	2	75b	15D530	UK	
21	15C972	PIN, grooved	1	80	24A381	VALVE, prime	1
23	110963	SCREW, cap, flng	2	81	24A382	BASE, valve	1
26	114391	SCREW, grounding	1	82	256219	POTENTIOMETER, assembly	1
27	113045	SCREW, sems, mach, phillips	6	86	243222	TRANSDUCER, pressure control; <i>includes 20</i>	1
29	15V996	GROMMET	1	92		FILTER, fluid	1
33	15C979	SWITCH, rocker	1		244071	30 mesh	
34	116167	KNOB, potentiometer	1		244067	60 mesh, original equipment	
35	105510	WASHER, lock, spring	3		244068	100 mesh	
38	116252	SCREW, #10 taptite phillips	4		244069	200 mesh	
39	112381	SCREW, mach, pan hd	4	96	287286	KIT, display	1
40	15D033	GROMMET, transducer	1	101	15V938	STUD, board	6
42	164672	NIPPLE, adapter, (695, 795, 1095)	1	102	114420	SCREW, mach, pmh, sems	2
45	119541	SWITCH, toggle	1	113	15F844	SPACER, manifold	1
47	186620	LABEL, symbol, ground	1	114	104813	PLUG, pipe	1
49	195428	BOOT, toggle	1	115	15C973	GASKET	1
50	24B218	HANDLE	1	118	116793	FITTING, elbow, hydraulic; 695, 795, 1095	1
50a		HANDLE, valve prime, FastFlush	1	122	115478	SCREW, mach torx/slt	1
50b		CAM, valve prime, FastFlush	1	125	15D541	SEAL, washer	1
52	257448	CONTROL, board; <i>includes 27, 102</i>	1	131	119228	SCREW, mach flat hd	4
59▲	243301	LABEL, warning	1	132	248219	FILTER, board UK	1
60▲	195792	LABEL, warning	1	149	258644	SWITCH, reed	1
61	15D431	BOX, control, UK	1	▲ Extra Danger and Warning tags and labels available free. * 24E233 KIT, handle, FastFlush is available (includes 21, 50)			
63	198648	LABEL, LCD	1				
64	15D063	LABEL, instruction	1				
65	196670	LABEL, ctrl, box cover	1				
66	287285	CAP, filter; <i>includes 9, 74</i>	1				
67	15C838	BASE, filter	1				
68		PANEL, control	1				
	15X617	695, 795, 1095, panel, control					
	15X620	695, 795, 1095, label					
69	15V937	PLATE, power bar	1				

Parts Drawing - Sprayer

Ultra Max II: 695 Hi-Boy; 795 Hi-Boy; 1095
(Models with SIX large capacitors on control board)



Parts Drawing - Bearing Housing



Parts List - Bearing Housing

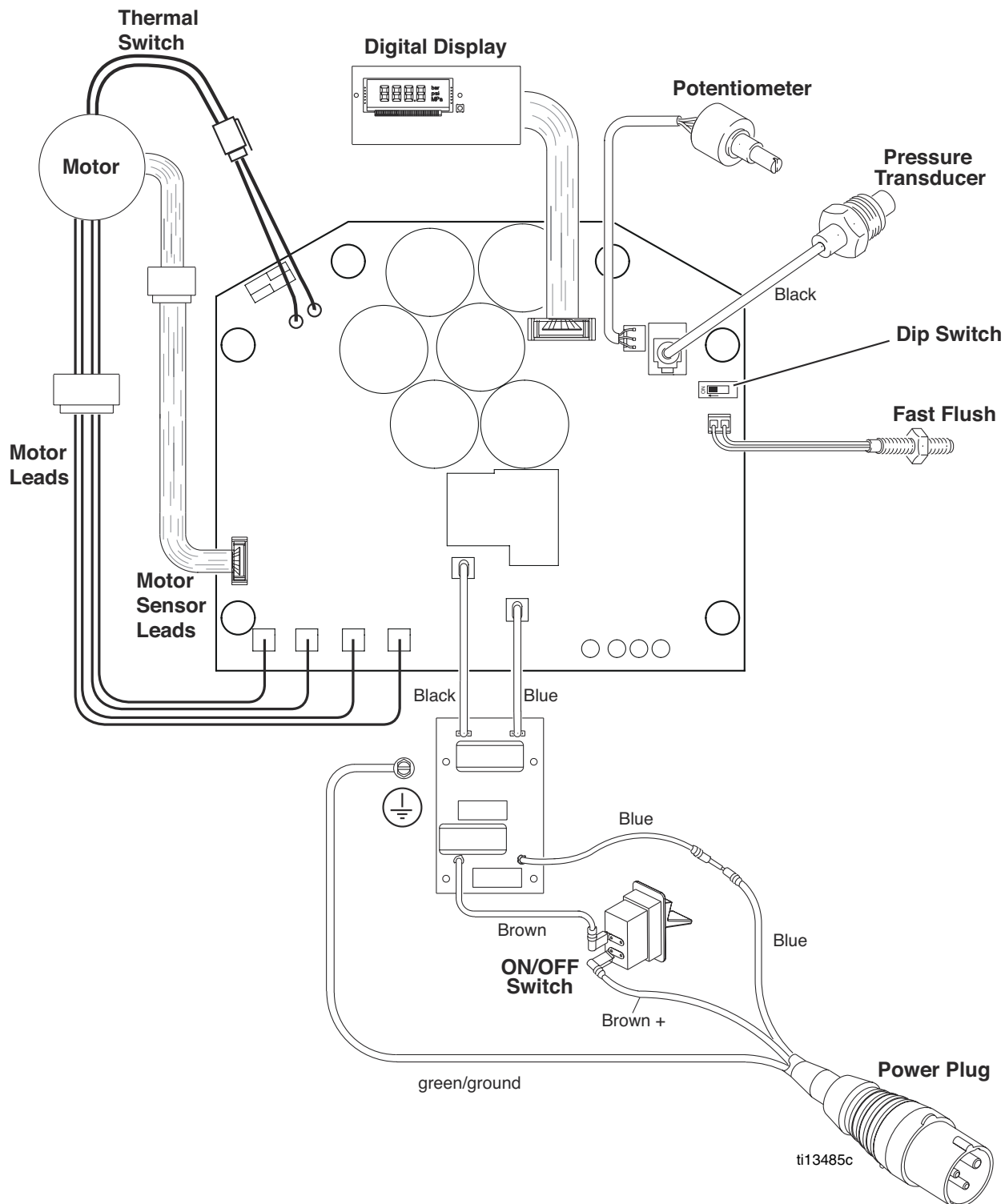
Ref.	Part	Description	Qty.	Ref.	Part	Description	Qty.
24	15F116	LATCH, handle	1	152	15G584	RECEIVER, clamp	1
77	278204	CLIP, drain line	1	153	116942	SCREW, shoulder, skt hd	1
108	15F503	SCREW, set, socket	1	156	15F498	SCREW, adjustment	1
124	119250	SCREW, shoulder	1	186	100985	WASHER, lock ext	1
139	15E625	PIN, housing, bearing	1	152	15G584	RECEIVER, clamp	1
140	15G890	LATCH, bearing housing	1	153	116942	SCREW, shoulder, skt hd	1
141	111040	NUT, lock, insert, nylock, 5/16	2				

Wiring Diagram

UltraMax II: 695 Hi-Boy; 795; 1095

(Models with SIX large capacitors on control board)

UK Models



Graco Standard Warranty

Graco warrants all equipment referenced in this document which is manufactured by Graco and bearing its name to be free from defects in material and workmanship on the date of sale to the original purchaser for use. With the exception of any special, extended, or limited warranty published by Graco, Graco will, for a period of twelve months from the date of sale, repair or replace any part of the equipment determined by Graco to be defective. This warranty applies only when the equipment is installed, operated and maintained in accordance with Graco's written recommendations.

This warranty does not cover, and Graco shall not be liable for general wear and tear, or any malfunction, damage or wear caused by faulty installation, misapplication, abrasion, corrosion, inadequate or improper maintenance, negligence, accident, tampering, or substitution of non-Graco component parts. Nor shall Graco be liable for malfunction, damage or wear caused by the incompatibility of Graco equipment with structures, accessories, equipment or materials not supplied by Graco, or the improper design, manufacture, installation, operation or maintenance of structures, accessories, equipment or materials not supplied by Graco.

This warranty is conditioned upon the prepaid return of the equipment claimed to be defective to an authorized Graco distributor for verification of the claimed defect. If the claimed defect is verified, Graco will repair or replace free of charge any defective parts. The equipment will be returned to the original purchaser transportation prepaid. If inspection of the equipment does not disclose any defect in material or workmanship, repairs will be made at a reasonable charge, which charges may include the costs of parts, labor, and transportation.

THIS WARRANTY IS EXCLUSIVE, AND IS IN LIEU OF ANY OTHER WARRANTIES, EXPRESS OR IMPLIED, INCLUDING BUT NOT LIMITED TO WARRANTY OF MERCHANTABILITY OR WARRANTY OF FITNESS FOR A PARTICULAR PURPOSE.

Graco's sole obligation and buyer's sole remedy for any breach of warranty shall be as set forth above. The buyer agrees that no other remedy (including, but not limited to, incidental or consequential damages for lost profits, lost sales, injury to person or property, or any other incidental or consequential loss) shall be available. Any action for breach of warranty must be brought within two (2) years of the date of sale.

GRACO MAKES NO WARRANTY, AND DISCLAIMS ALL IMPLIED WARRANTIES OF MERCHANTABILITY AND FITNESS FOR A PARTICULAR PURPOSE, IN CONNECTION WITH ACCESSORIES, EQUIPMENT, MATERIALS OR COMPONENTS SOLD BUT NOT MANUFACTURED BY GRACO. These items sold, but not manufactured by Graco (such as electric motors, switches, hose, etc.), are subject to the warranty, if any, of their manufacturer. Graco will provide purchaser with reasonable assistance in making any claim for breach of these warranties.

In no event will Graco be liable for indirect, incidental, special or consequential damages resulting from Graco supplying equipment hereunder, or the furnishing, performance, or use of any products or other goods sold hereto, whether due to a breach of contract, breach of warranty, the negligence of Graco, or otherwise.

FOR GRACO CANADA CUSTOMERS

The Parties acknowledge that they have required that the present document, as well as all documents, notices and legal proceedings entered into, given or instituted pursuant hereto or relating directly or indirectly hereto, be drawn up in English. Les parties reconnaissent avoir convenu que la rédaction du présente document sera en Anglais, ainsi que tous documents, avis et procédures judiciaires exécutés, donnés ou intentés, à la suite de ou en rapport, directement ou indirectement, avec les procédures concernées.

Graco Information

For the latest information about Graco products, visit www.graco.com.

TO PLACE AN ORDER, contact your Graco distributor or call 1-800-690-2894 to identify the nearest distributor.

*All written and visual data contained in this document reflects the latest product information available at the time of publication.
Graco reserves the right to make changes at any time without notice.*

Original instructions. This manual contains English. MM 311364

Graco Headquarters: Minneapolis
International Offices: Belgium, China, Japan, Korea

GRACO INC. AND SUBSIDIARIES • P.O. BOX 1441 • MINNEAPOLIS MN 55440-1441 • USA

Copyright 2011, Graco Inc. All Graco manufacturing locations are registered to ISO 9001.

www.graco.com
Revised March 2012