

GH833 OEM-sæt

311528A

– Anvendes til facademaling og overfladebehandlingsmaterialer,
tagmaling og overfladebehandlingsmaterialer af lavere kvalitet –

Delnr. 249767, 253473

Maksimalt arbejdstryk: 4.000 psi (27,6 MPa, 275,8 bar)

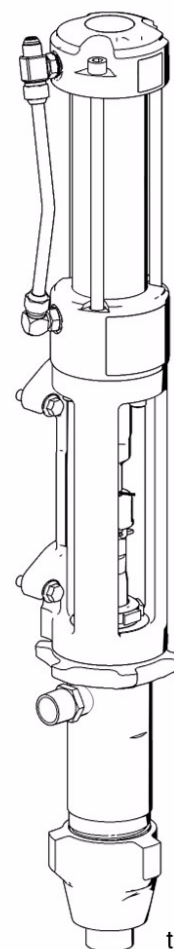


Vigtige sikkerhedsforskrifter

Læs alle advarsler og vejledninger i denne brugerhåndbog.
Gem disse forskrifter.

Tekniske data

Maling-/hydraulikforhold	1,45:1
Input fra brugeren	
• Maks. hydraulisk tryk	2.750 psi (190 bar, 19,0 MPa)
• Hydraulisk gennemstrømning påkrævet	23,6 l/min.
Enhedens ydeevne	
• Maks. væsketryk	4.000 psi (275 bar, 27,6 MPa)
• Maks. gennemstrømning	15,1 l/min.
Maks. slag hastighed	64 slag/min.
Mål	
Højde	1.003 mm
Bredde	190,5 mm
Dybde	140 mm
Vægt	28,6 kg

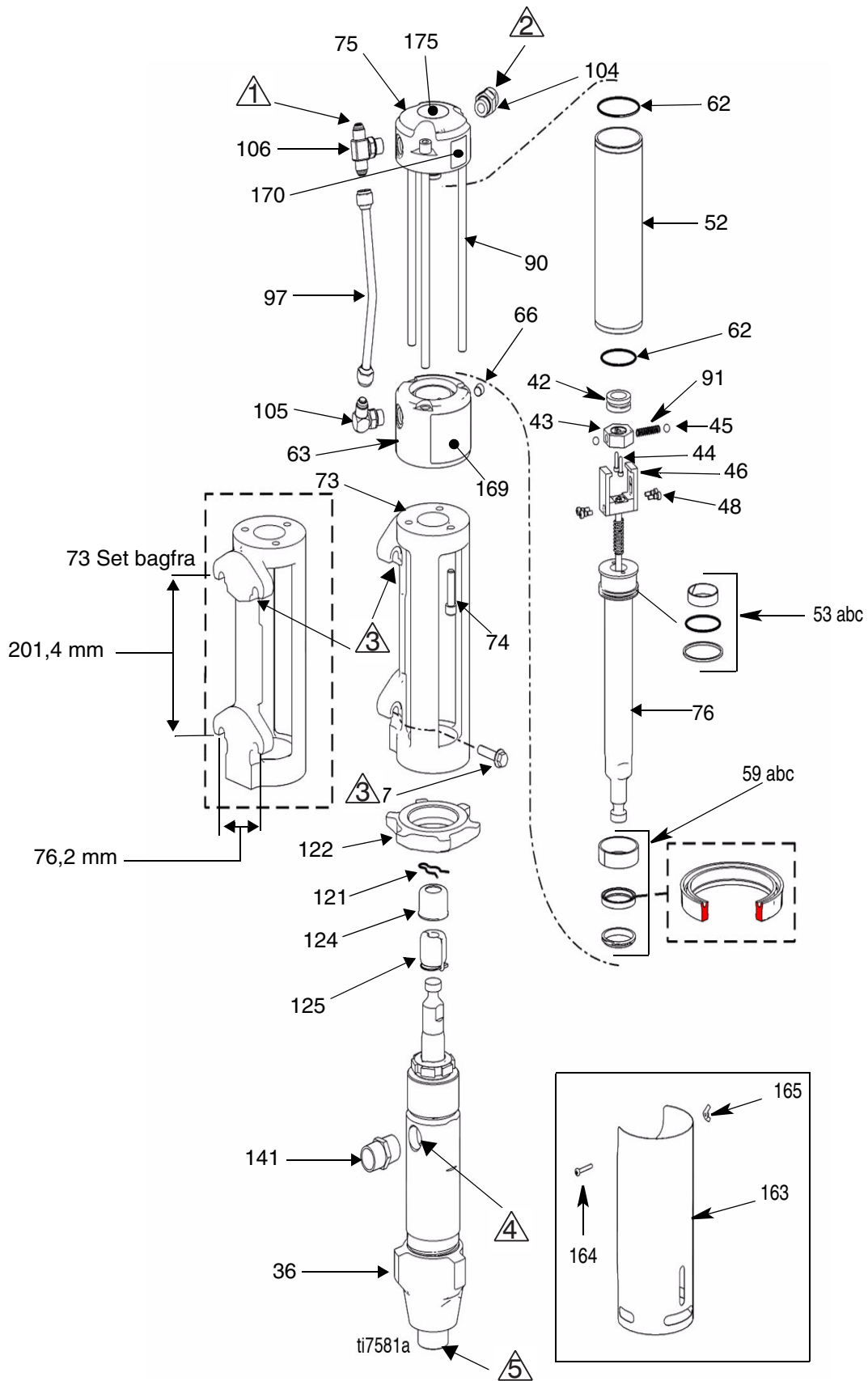


ti7580a

PROVEN QUALITY. LEADING TECHNOLOGY.

Dele

FN	Part No.	Description	Qty	FN	Part No.	Description	Qty
7	120226	SCREW, hex hd, flange	4	105	117607	FITTING, elbow std thd	1
36	287834	KIT, pump, displacement, includes 141	1	106	117609	FITTING, tee, branch, str thd	1
40	116554	WASHER, flat	1	121	116407	CLIP, hairpin	1
42	15G501	SLEEVE, valve, hydr, motor	1	122	15G204	NUT, retaining	1
43	15G503	STOP, valve, hydraulic motor	1	124	197340	COVER, coupler	1
44	15D256	SCREW, cap, sch	2	125	244819	COUPLING, assembly	1
45	101947	BALL, bearing	2	141	15H335	FITTING, nipple, 1 in. npt, includes 36	1
46	15G270	YOKE, arm, hydraulic motor	2	169▲	15G877	LABEL, front	1
48	105270	SCREW, shoulder, sch	4	170	15G878	LABEL, Graco logo	1
52	287869	CYLINDER, hydraulic motor	1	175▲	15B063	LABEL, includes 75	1
53	287870	KIT, piston, includes 62	1	163‡	15H201	SHIELD, pump	1
53a		BEARING, piston	1	164‡	111235	SCREW, mach, pnh	1
53b		O-RING, piston	1	165‡	120317	NUT, wing	1
53c		SEAL, piston, hydraulic motor	1	▲ Ekstra fare- og advarselmærkater, skilte og kort fås uden beregning.			
59	287870	KIT, rod	1	‡ Anvendes til model 253473.			
59a		SEAL, rod	1	Del Beskrivelse			
59b		BEARING, rod	1	△	HYDRAULISK INDTAG, 3/4 tomme – 16 UNF 2A, 37° tragtformet han		
59c		WIPER, rod	1	△	HYDRAULISK TILBAGELØB, 1 1/6 tomme – 12 UN 2A, 37° tragtformet han		
62	116084	PACKING, o-ring	2	△	MONTERINGSHUL, 4X, 7/16 tomme – 14 UNC 2B, flangehoved, hovedskrue, længde på 1 3/4 tomme anbefales (delnr. 120226)		
63	15G559	HOUSING, hydraulic motor, lower	1	△	1 tomme – 11 1/2 NPT hun		
66	101970	PLUG, pipe	1	△	1 1/2 tomme – 11 1/2 NPT han		
73	15G639	ADAPTER, hydraulic motor/pump	1				
74	120202	SCREW, cap sch	3				
75	288061	CAP, hydraulic head, includes 175	1				
76	287868	PISTON, hydraulic	1				
90	120138	SCREW, cap, socket head	3				
91	120146	SPRING, compression	1				
97	287841	TUBE	1				
104	120065	FITTING, hydraulic	1				



*All written and visual data contained in this document reflects the latest product information available at the time of publication.
Graco reserves the right to make changes at any time without notice.*

Graco Headquarters: Minneapolis

International Offices: Belgium, China, Japan, Korea

GRACO INC. P.O. BOX 1441 MINNEAPOLIS, MN 55440-1441

www.graco.com

Printed in USA 4/2006