

## Control Board Replacement Kit

312188D  
EN

**SR7, ProX7, ProX9 (Series B) and Pro LTS 17 (Models 24N906, 257070), Pro LTS 19 (Model 24N808) Control Board Replacement Kit: 288705**



**ProX9 (Series A) and Pro LTS 19 (Model 257080) Control Board Replacement Kit: 288900 (120V Models)**

**ProX9, Pro LTS 19, L30+, and Pro Plus™ A60 Control Board Replacement Kit: 16W944 (240V Models)**



### Important Safety Instructions

Read all warnings and instructions in this manual. Save these instructions. For detailed sprayer information and warnings, see your Operation manual.

						
---	---	--	--	--	--	--

To reduce the risk of fluid injection or splashing in the eyes or on the skin, relieve all fluid pressure in system before you install, remove, or replace any parts. See the **Pressure Relief Procedure** provided in your Operating Instruction manual.

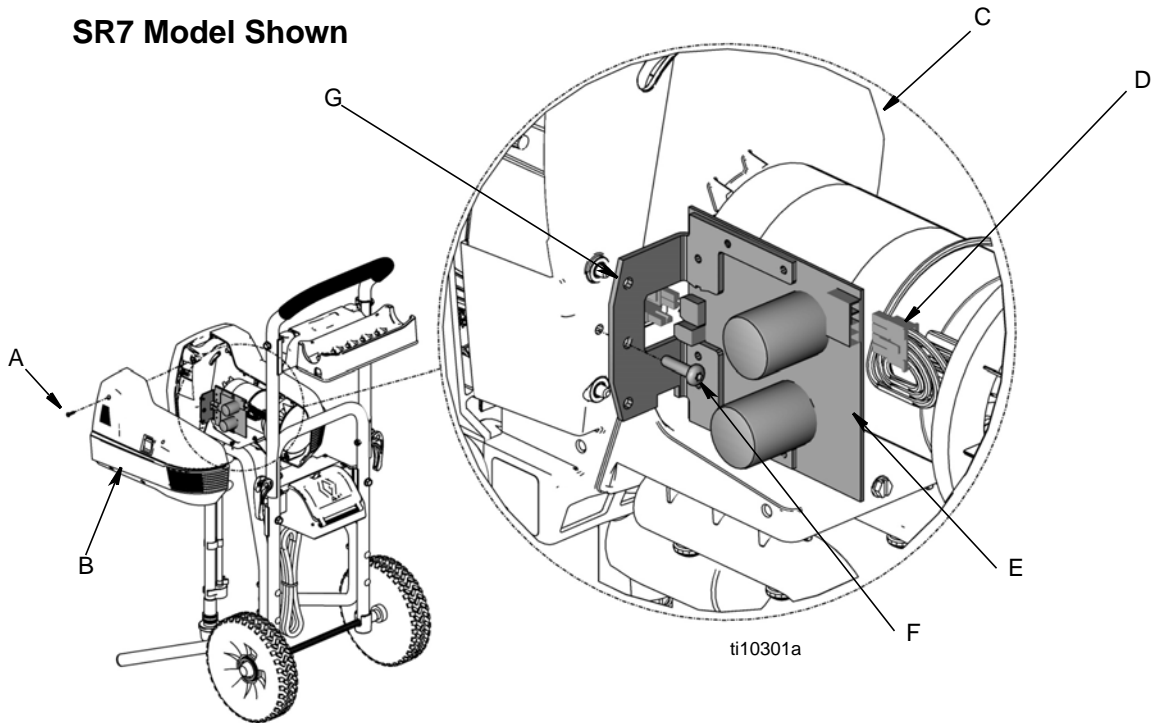
### Disassembly

1. Unplug electrical cord and **Relieve Pressure**.
2. Remove enclosure mounting screws (A). Pull enclosure (B) away from drive housing (C). Take care to not pull on the leads from the electrical cord and the power switch.
3. Disconnect motor harness (D), electrical cord and power switch lead from control board (E). (Also see wiring diagram for your sprayer model.)
4. Remove screw (F) that mounts control board (E) and pull control board approximately 2 in. (50 mm) back from drive housing (C).
5. Disconnect pressure control and AutoPrime® wiring harnesses from connectors (G) on front of control board (E). Using a fingernail or flat blade screwdriver, press tab on right side of connector to release.

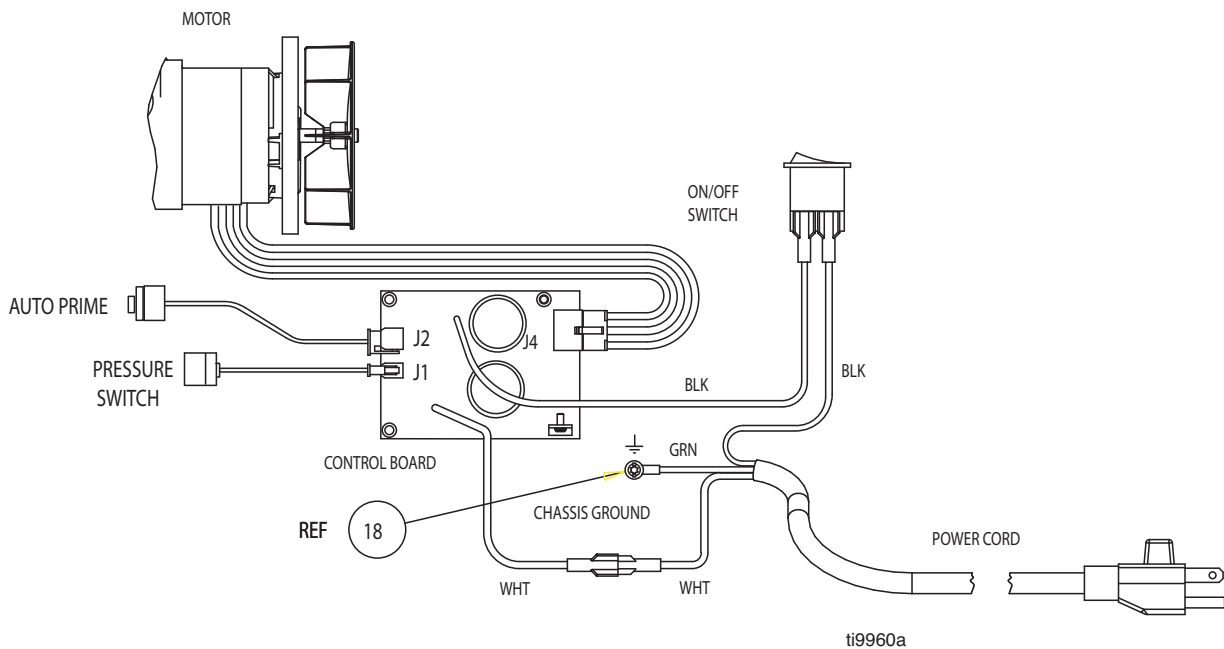
PROVEN QUALITY. LEADING TECHNOLOGY.

## Installation

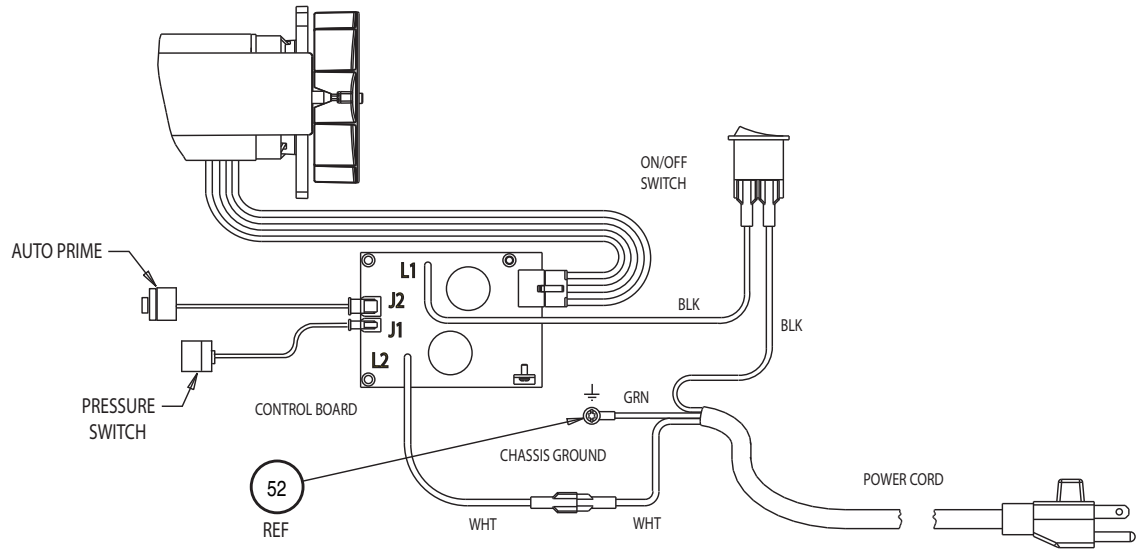
1. Connect pressure control and AutoPrime wiring harnesses to new control board connector (G).
2. Install new control board (E) on drive housing (C) and tighten control board mounting screw (F).
3. Connect power switch, electrical cord leads and motor harness (D) to control board (E). (Also see wiring diagram for your sprayer model.)
4. Replace enclosure (B) and tighten enclosure mounting screws (A). When reassembling enclosure, take care not to pinch leads.



## SR7 Model Wiring Diagram

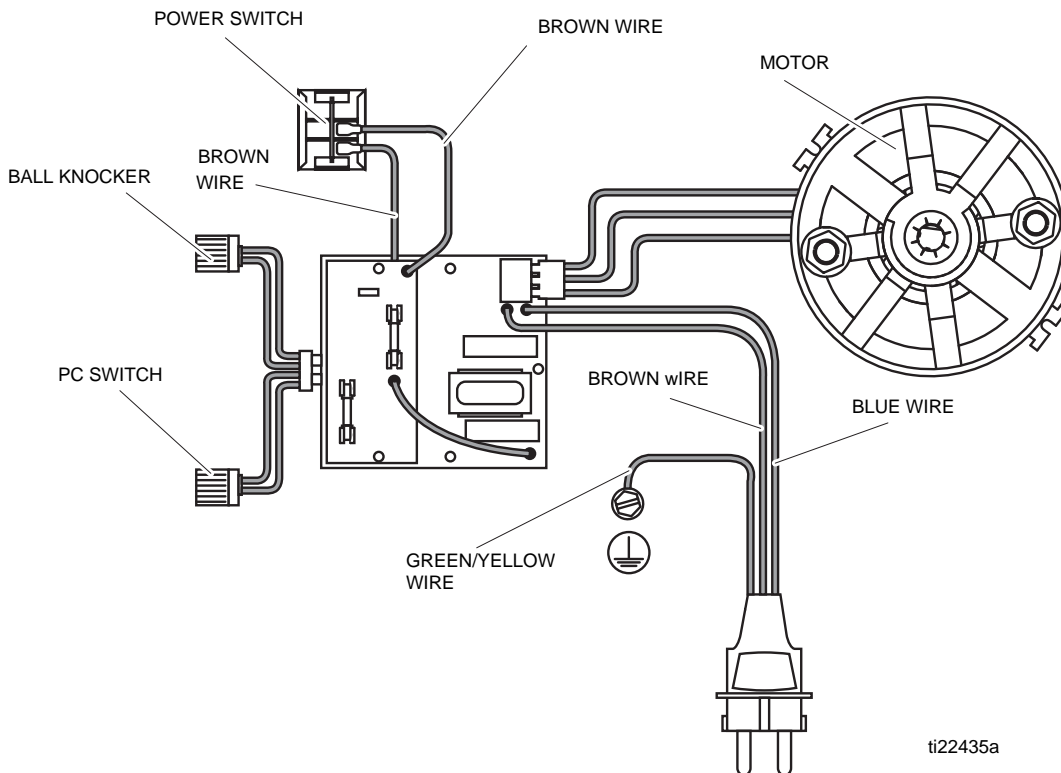


## 120V ProX and Pro LTS Models Wiring Diagram



ti9505a

## 240V ProX9, Pro LTS 19, M3+, and Pro Plus A60 Models Wiring Diagram



ti22435a

*All written and visual data contained in this document reflects the latest product information available at the time of publication.  
Graco reserves the right to make changes at any time without notice.*

For patent information, see [www.graco.com/patents](http://www.graco.com/patents).

Original instructions. This manual contains English. MM 312188

**Graco Headquarters:** Minneapolis

**International Offices:** Belgium, China, Japan, Korea

**GRACO INC. P.O. BOX 1441 MINNEAPOLIS, MN 55440-1441**

**Copyright 2007, Graco Inc. is registered to ISO 9001**

[www.graco.com](http://www.graco.com)  
Revised April 2016