

Control Board Kit for Project Painter™ 5, Project Painter™ 7, X5, X7, LTS 15, and LTS 17 Airless Sprayers

312342C
ENG

This manual contains kit installation instructions only




Control Board Replacement Kit: 288706, 288707, 16E829



Important Safety Instructions

For detailed sprayer information and warnings, see Operation manual 312079, 312082, 312001, 313034 included with Magnum sprayers.

Pressure Relief Procedure

						
---	---	---	--	--	--	--

To help prevent injection injuries, follow this procedure when you stop spraying and before you service or clean the sprayer, remove parts, or repair leaks.

Project Painter 5 and Project Painter 7:

1. Turn AllControl to OFF. Unplug sprayer.
2. Trigger gun.
3. Put trigger safety in safety ON position.

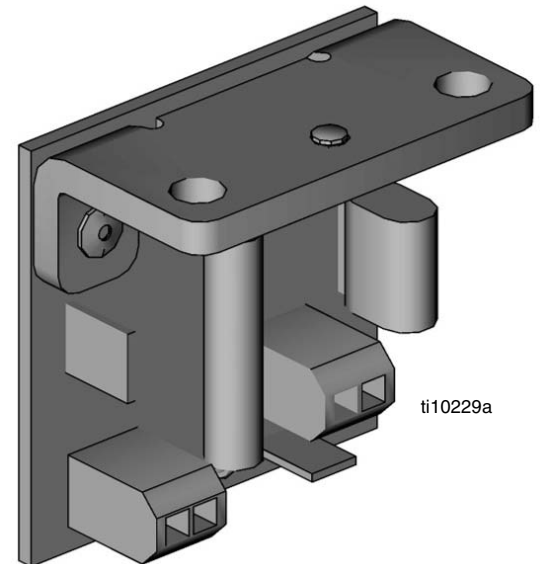
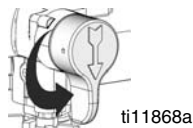
NOTE: Leave AllControl in OFF position until you are ready to spray again.



X5, X7, LTS 15, and LTS 17:

1. Turn Power switch OFF. Unplug sprayer.
2. Turn Spray/Prime valve to PRIME to relieve pressure. Turn pressure control knob left (counterclockwise) to minimize pressure.
3. Trigger gun.
4. Put trigger safety in safety ON position.

NOTE: Leave Spray/Prime valve in PRIME position until you are ready to spray again.



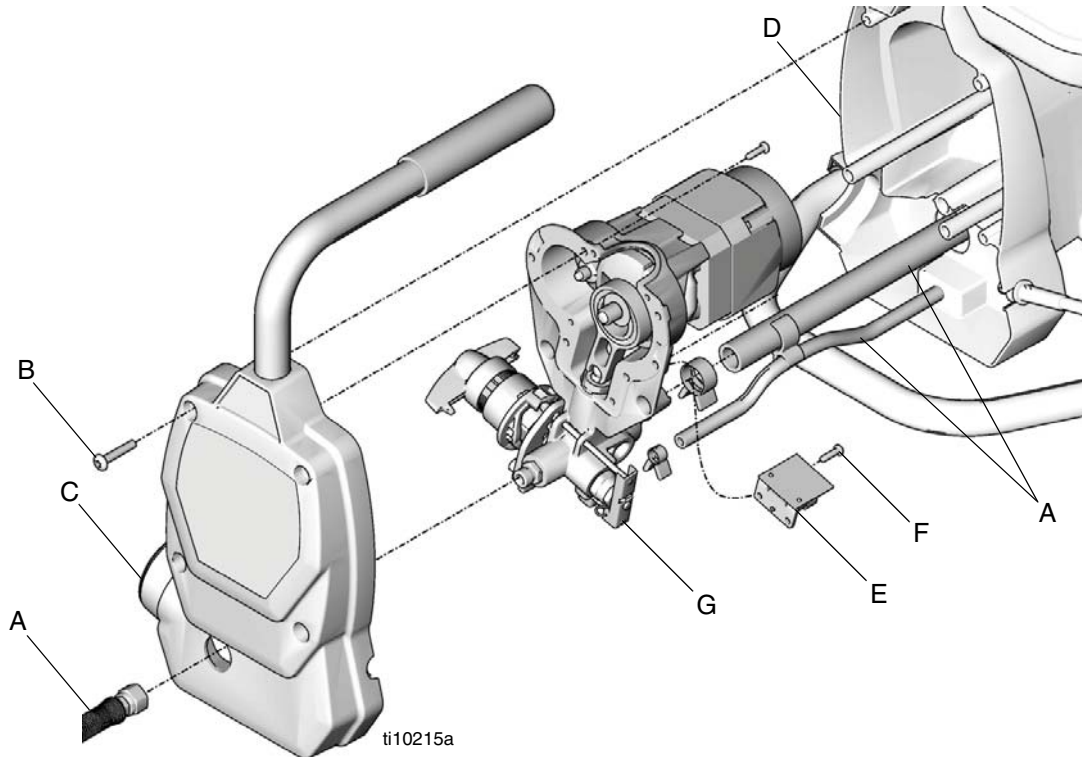
ti10229a

ti9168a

ti11868a

If you suspect that the spray tip or hose is completely clogged or that pressure has not been fully relieved after following the steps above, VERY SLOWLY loosen the tip guard retaining nut or hose end coupling to relieve pressure gradually. Then loosen it completely. Clear the tip or hose obstruction.

Control Board Replacement Kit 288707 for Project Painter 5

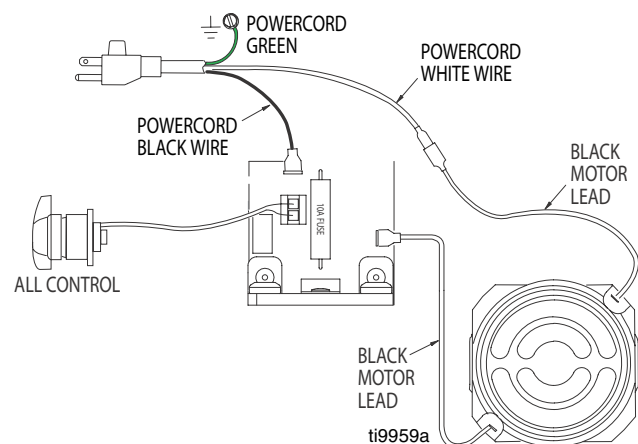


Disassembly

1. Unplug electrical cord.
2. **Relieve Pressure** by following the procedure described on page 1, or see the Operation manual 312079.
3. Tip unit on its back.
4. Carefully remove 2 AllControl labels.
5. Remove 4 cover screws (B) using a T-30 torx screwdriver. Separate enclosure (D) and cover (C).
6. Disconnect motor, power cord, AllControl knob, and leads from control board (E).
7. Remove 2 screws (F) using a T-20 screwdriver holding control board (E) to pump housing (G).
8. Discard old control board.

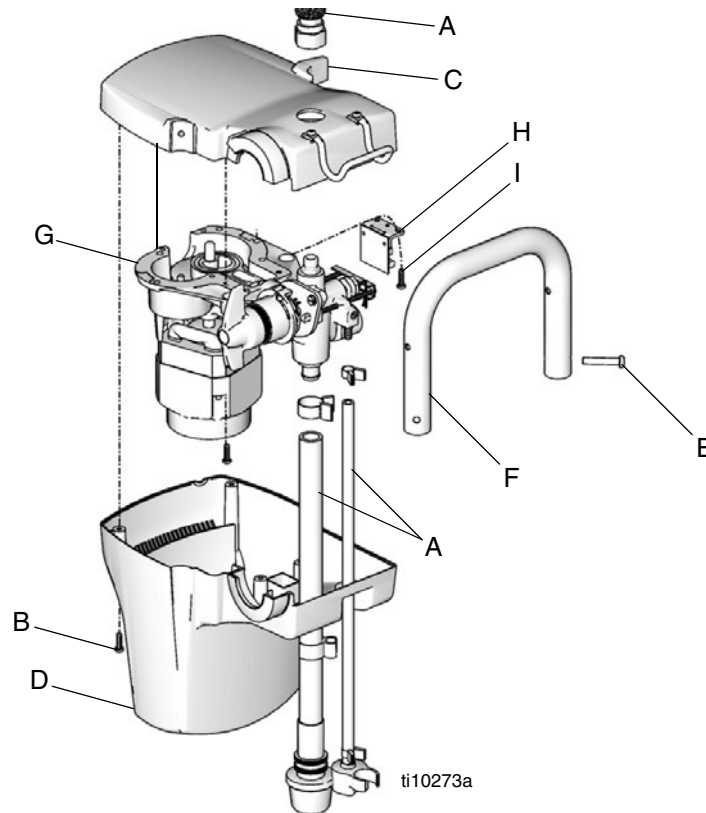
Assembly

1. Insert new control board (E) into housing (G) and replace 2 board mounting screws (F). Torque screws to 25 to 35 in-lb (2.8 to 4.0 N•m).
2. Reconnect motor, power cord, AllControl knob, and leads to control board (E).



3. Replace motor enclosure (D). Replace 4 screws (B) and torque to 25 to 35 in-lb (2.8 to 4.0 N•m).
4. Reconnect hoses (A).
5. Apply new AllControl labels.

Control Board Replacement Kit 288706 for Project Painter 7

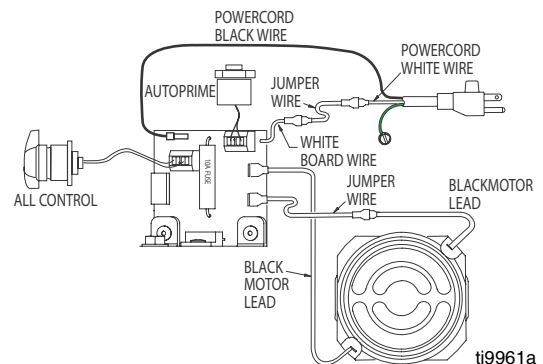


Disassembly

1. Unplug electrical cord.
2. **Relieve Pressure** by following the procedure described on page 1, or see the Operation manual 312082.
3. Remove all hoses (A). Use a T-30 torx screwdriver to remove 2 screws (E) holding unit to frame (F).
4. Tip unit upside down.
5. Carefully remove 2 AllControl labels.
6. Use T-20 torx screwdriver to remove 4 screws (B) holding enclosure (D) to cover (C).
7. Disconnect motor, power cord, AllControl knob and AutoPrime leads from control board (H).
8. Use T-20 torx screwdriver to remove 1 screw (I) holding control board (H) to pump housing (G).
9. Discard old control board.

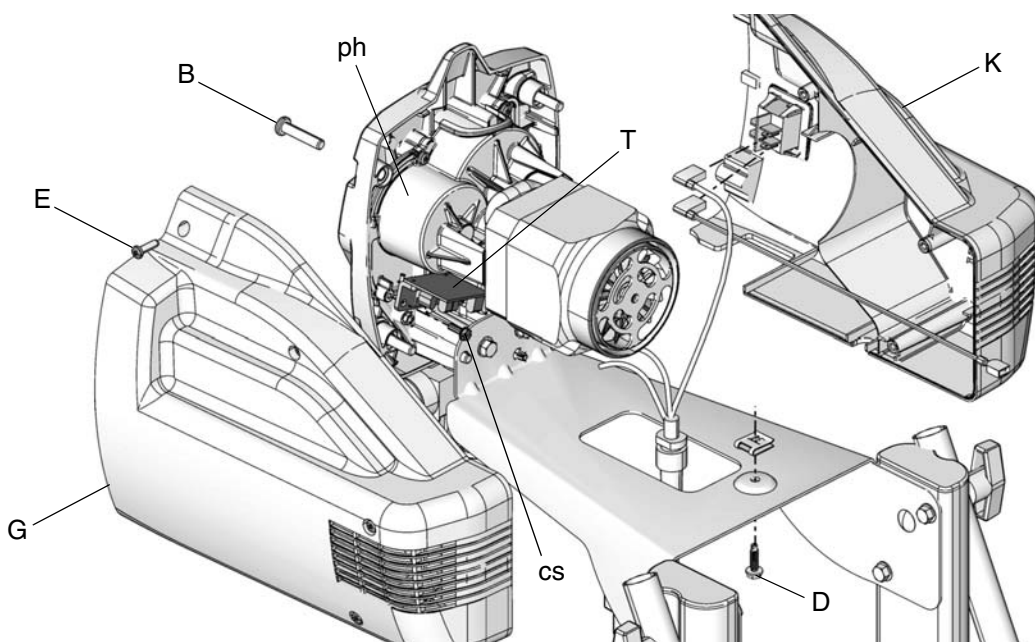
Assembly

1. Insert new control board (H) into housing (G) and replace mounting screw (I). Torque screw to 25 to 35 in-lb (2.8 to 4.0 N•m).
2. Reconnect motor, power cord, AllControl knob and AutoPrime leads to control board (H).



3. Replace motor enclosure (D). Replace 4 screws (B) and torque screws to 25 to 35 in-lb (2.8 to 4.0 N•m).
4. Reconnect unit to frame (F) using 2 screws (E) and torque to 70 to 80 in-lb (7.9 to 9.0 N•m).
5. Reconnect hoses (A).
6. Apply new AllControl labels.

X5, X7, LTS 15, and LTS 17 Control Board Replacement Kit 288706 and 16E829



(Series A unit shown)

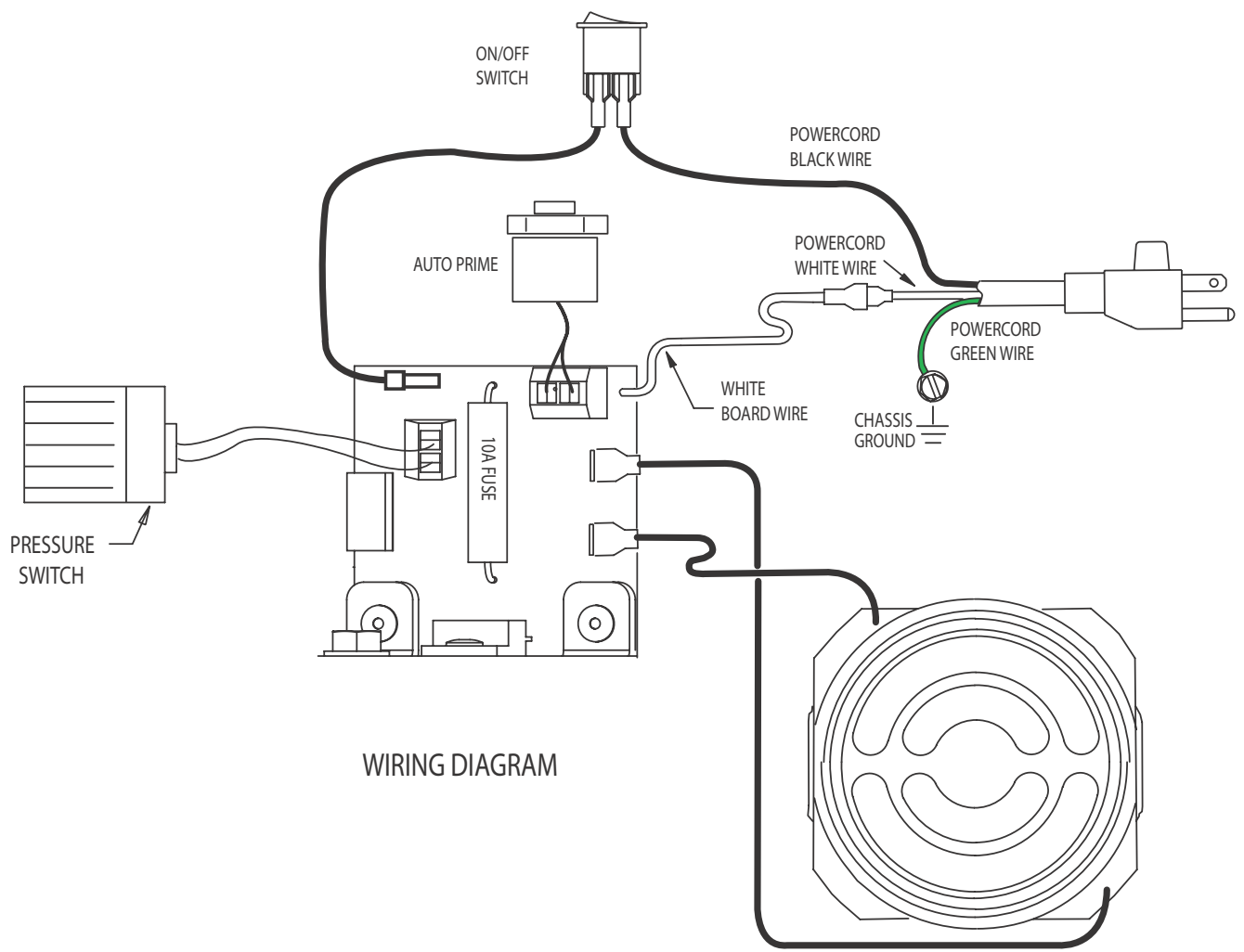
Disassembly

1. Unplug electrical cord and **Relieve Pressure** (see page 1 of Operation manual 312001 or 313034).
2. **X7 and LTS 17 Only:** Remove underside shroud mounting screw (D).
3. Remove side shroud screws (E) (T-20 Torx).
4. Remove 4 front cover screws (B) (T-30 Torx).
5. Remove right shroud (G) and left shroud (K).
6. Disconnect all wire leads and connectors from control board (T).
7. Remove control board mounting screw (cs) and control board (T).

Assembly

1. Reconnect all wire leads and connectors to control board (T) (see **Wiring Diagram** on page 5).
2. Install new control board (T) using mounting screw (cs) and torque to 20 - 35 in-lbs (2.3 to 2.8 N•m).
3. Install power cord (N) into recess on left shroud (K).
4. Reassemble left shroud (K) and right shroud (G).
5. Install side shroud screws (E) (T-20 Torx). Torque to 20 to 25 in-lbs (2.3 to 2.8 N•m).
6. Install 4 front cover screws (B) (T-30 Torx). Torque to 26 to 32 in-lbs (2.9 to 3.6 N•m).
7. **X7 and LTS 17 Only:** Install underside shroud screw (D). Torque to 25-35 in-lb (2.8-4.0 N•m).

X5, X7, LTS 15, and LTS 17 Wiring Diagram



*All written and visual data contained in this document reflects the latest product information available at the time of publication.
Graco reserves the right to make changes at any time without notice.*

Original instructions. This manual contains English. MM 312342

Graco Headquarters: Minneapolis

International Offices: Belgium, China, Japan, Korea

GRACO INC. P.O. BOX 1441 MINNEAPOLIS, MN 55440-1441

Copyright 2010, Graco Inc. is registered to ISO 9001

www.graco.com
Revised 08/2010