

Repair Kit



# Check-Mate® 800

## Throat Seal Kits

334128A  
EN

For replacing throat seal kits. For professional use only.

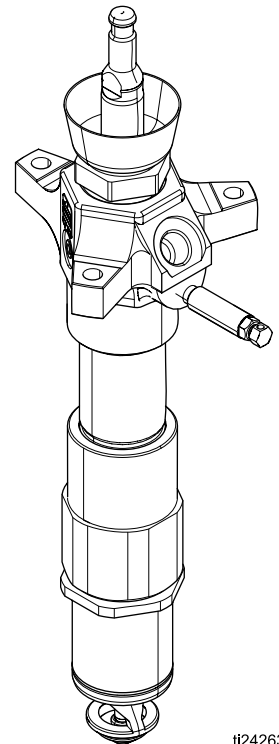


### Important Safety Instructions

Read all warnings and instructions in this manual. Save these instructions.

*Kit No. 24V752*

*Kit No. 24V753*

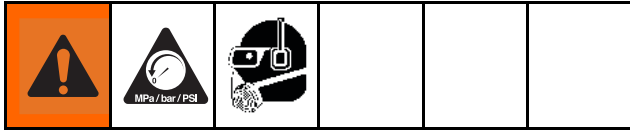


ti24263a

---

PROVEN QUALITY. LEADING TECHNOLOGY.

# Replace Throat Packings



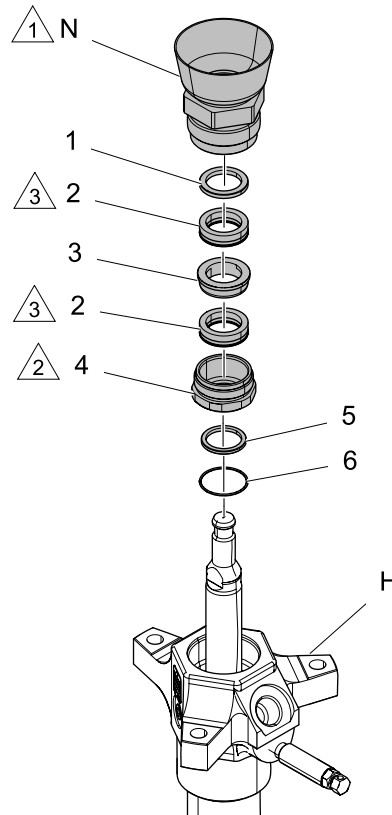
## Note

The throat packings are available as a preassembled kit.

Pump Part No.	Throat Seal Repair Kit
24W152	24V752
24W153	24V753
24W150	24V752
24W151	24V753



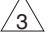
1. Relieve the pressure. See **Pressure Relief Procedure** in the pump manual 334127.
2. Unscrew the packing nut (N) using a pipe wrench. Remove the o-ring (6) and washer (5) from the bottom of the packing housing (4) or from the outlet housing (H).
3. Place the flats of the packing nut (N) in a vise. Unscrew the packing housing (4) and discard it and the packings. Remove the washer (3), seal (2), and backup washer (1) from the packing nut.
4. The throat repair kit is preassembled. Screw the kit into the packing nut (N), making sure that the backup washer (1), seal (2), and washer (3) are properly positioned on top of the packing housing (4), with the lips of the seal facing down. Torque the packing housing (4) to  $225 \pm 10$  ft-lb ( $305 \pm 14$  N•m).
5. Before installing packing housing into pump, generously lubricate seals with high temperature grease supplied with repair kit.

6. If necessary, use an arbor press to install o-ring (6) in packing housing (4).
7. Screw the packing nut (N) and packing housing (4) into the outlet housing (H). Torque to  $150 \pm 30$  ft-lb ( $203 \pm 41$  N•m).



ti25426a

Figure 1 Throat Packings

	Torque to $225 \pm 10$ ft-lb ( $305 \pm 14$ N•m).
	Torque to $150 \pm 30$ ft-lb ( $203 \pm 41$ N•m).
	Lips of u-cup packing must face down.

# Parts

## Carbon Filled Pump Seal Kit, 24V752 Glass Filled Pump Seal Kit, 24V753

Ref.	Part	Description	Qty	Ref.	Part	Description	Qty
1	195233	WASHER, seal back-up	1	4	190585	NUT, packing	1
2	120286	PACKING, u-cup (assembly 2 24W152 only)	2	5	195232	WASHER, rod scraper	1
	113021	PACKING, u-cup (assembly 2 24W153 only)	2	6	104537	PACKING, o-ring, ptfe	1
3	195234	WASHER, scraper 1.476 x 2.157	1	7	16M106	LUBRICANT, tube, 1 oz	1

## **Graco Information**

For the latest information about Graco products, visit [www.graco.com](http://www.graco.com).

For patent information, see [www.graco.com/patents](http://www.graco.com/patents).

To place an order, contact your Graco Distributor or call to identify the nearest distributor.

**Phone:** 612-623-6921 or **Toll Free:** 1-800-328-0211 **Fax:** 612-378-3505

All written and visual data contained in this document reflects the latest product information available at the time of publication.

Graco reserves the right to make changes at any time without notice.

Original Instructions. This manual contains English. MM 334128

**Graco Headquarters:** Minneapolis

**International Offices:** Belgium, China, Japan, Korea

**GRACO INC. AND SUBSIDIARIES • P.O. BOX 1441 • MINNEAPOLIS MN 55440-1441 • USA**

Copyright 2014, Graco Inc. All Graco manufacturing locations are registered to ISO 9001.

[www.graco.com](http://www.graco.com)

Revision A, December 2014