

Z-Series Chemical Pump Repair Kits

3A0281V
EN

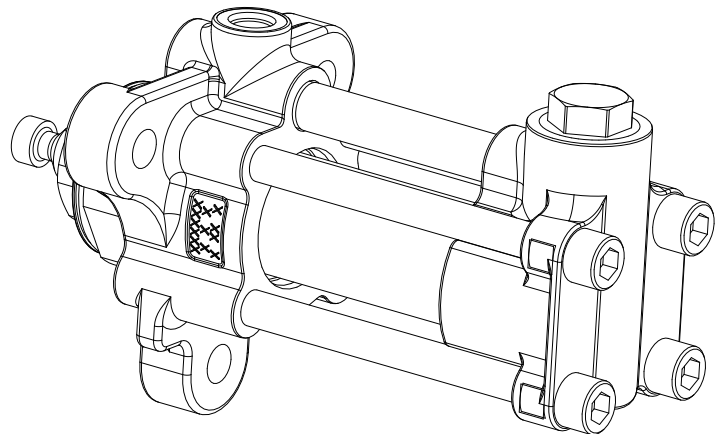
For repairing the seals, piston rod, and cylinder on Z-Series Chemical Pumps.
Not for use in explosive atmospheres.



Important Safety Instructions

Read all warnings and instructions in Z-Series Chemical Pump Instructions-Parts manual. Save those instructions.

See kit numbers on pages 11 through 15.



r_257891_3a0019_1h

Contents

Contents **2**
Related Manuals **2**
Repair **3**
Parts **5**
 S1, S3, and S4 Pumps 5
 S5, S6, and S7 Pumps 8
California Proposition 65 **16**
Graco Information **16**

Related Manuals

Manual	Description
3A0019	Z-Series Chemical Pumps Instructions-Parts
3A6394	Z-Series Chemical Pumps High Wear Instructions-Parts

Repair

Install Piston Retainer

1. Disassemble pump assembly. See Z-Series Chemical Pump Instructions-Parts manual for instructions.
2. Replace worn or damaged parts with parts from repair kits.
3. See Z-Series Chemical Pump Instructions-Parts manual for complete assembly instructions.

NOTICE

To prevent damage to seals always use piston assembly tool (31) and rod installation tool (30) from repair kit when assembling the piston seals and displacement rod. See FIG. 1 and FIG. 3.

NOTE: Piston assembly tool is NOT needed for 5cc-15cc pump sizes.

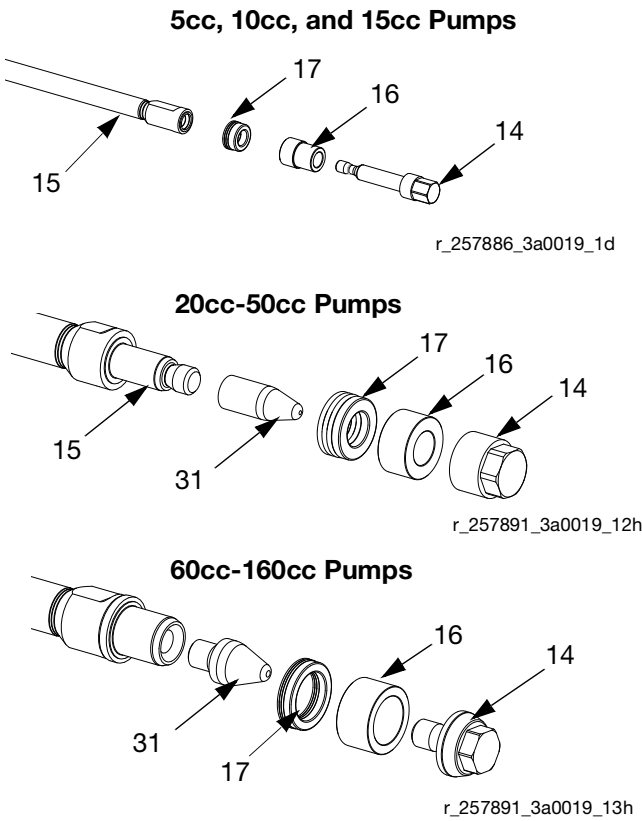


FIG. 1: S1, S3 & S4 Pumps Piston Assembly Tool (31)

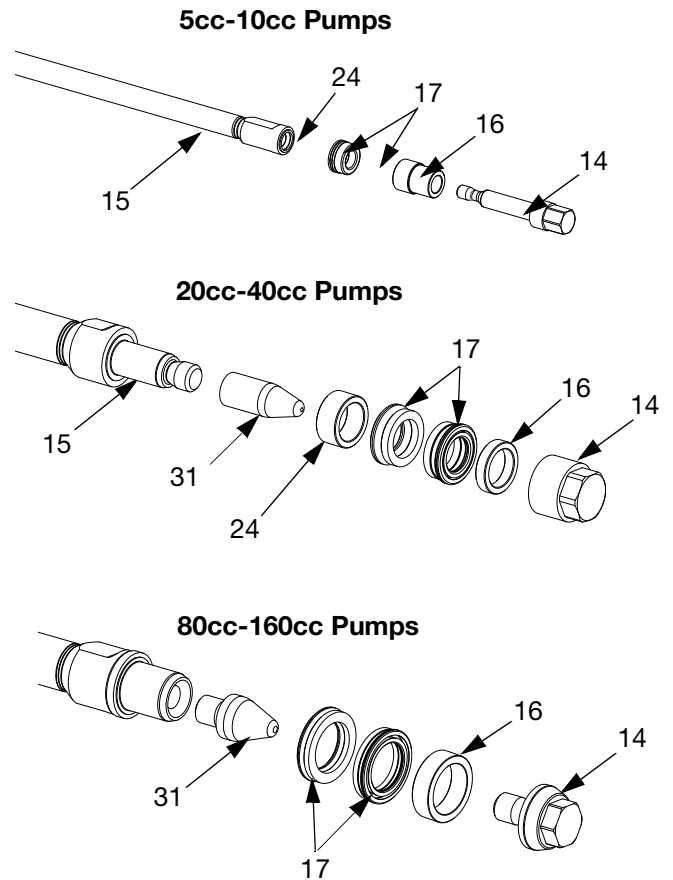


FIG. 2: S5, S6, S7 Pumps Piston Assembly Tool (31)

Install Displacement Rod

1. Replace worn or damaged parts with parts from repair kits.
2. See Z-Series Chemical Pumps High Wear Instructions-Parts manual for complete assembly instructions.

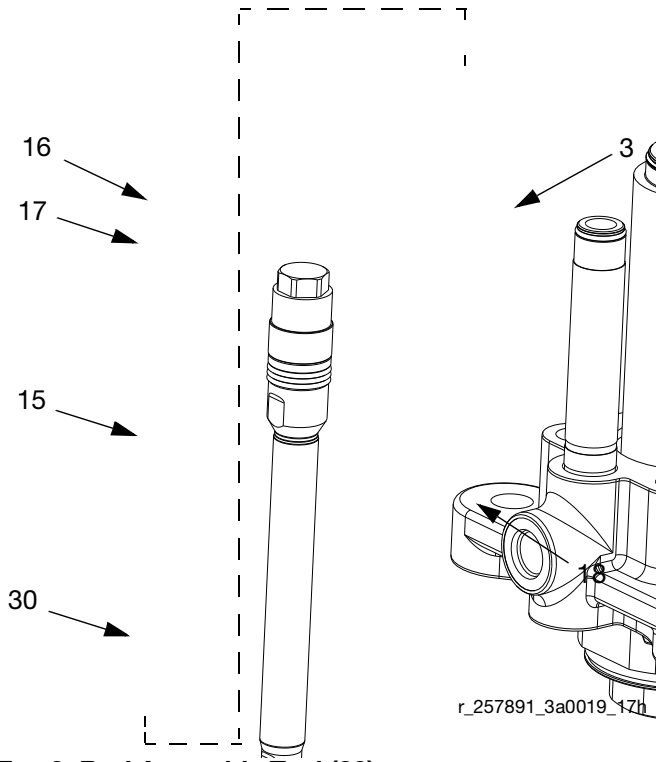


FIG. 3: Rod Assembly Tool (30)

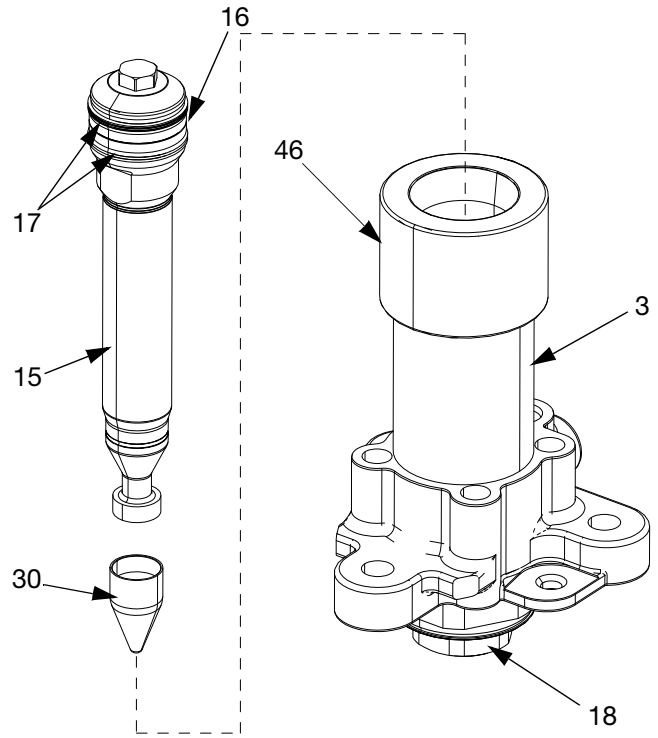
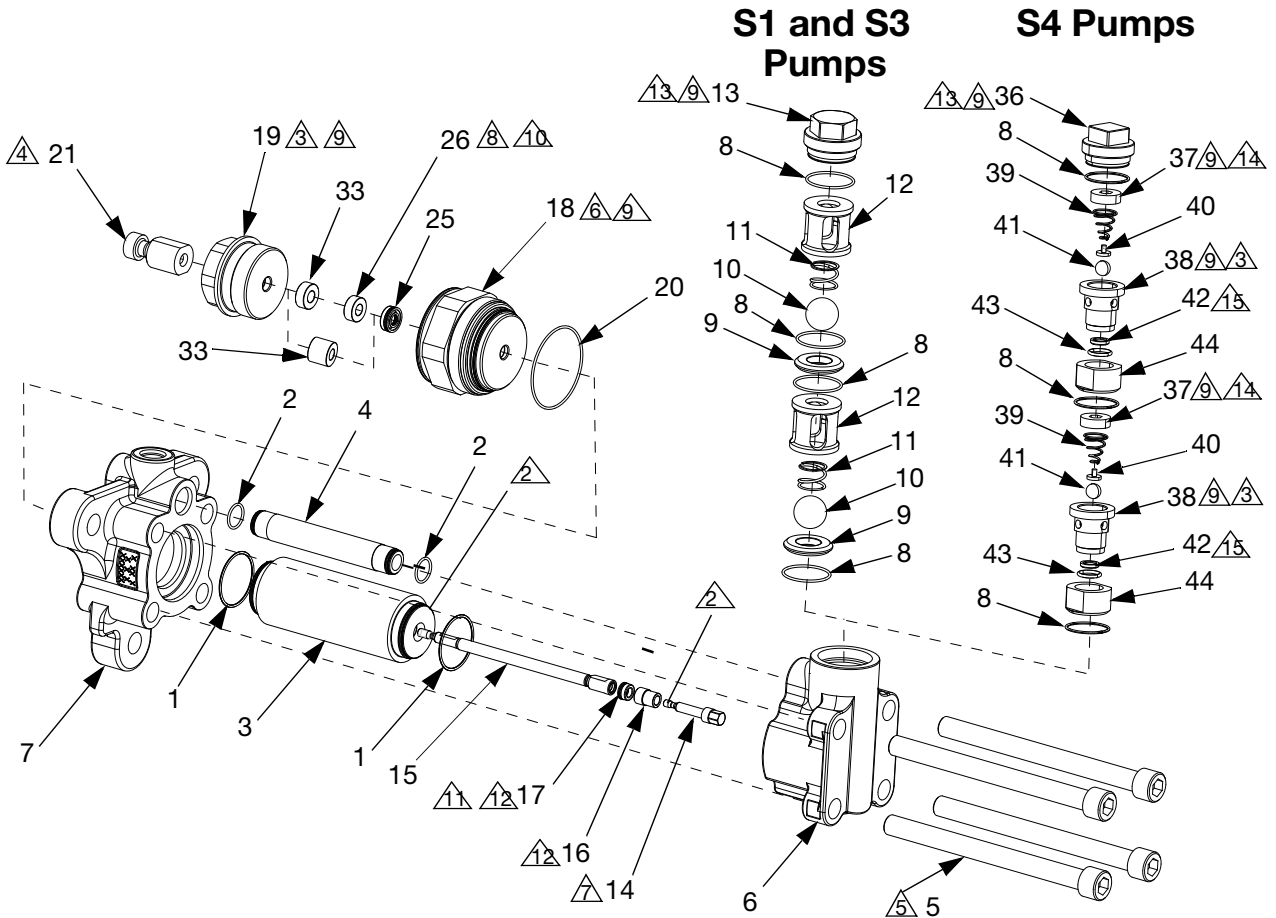


FIG. 4: Rod Assembly Tools for L160S6 (160cc) Only (30 and 46)

Parts

S1, S3, and S4 Pumps

5cc, 10cc, and 15cc



1. Lubricate seals, o-rings, lead-in's and moving parts with grease.

Apply one stripe of removable strength anaerobic sealant on threads.

NOTICE

Specification sheets and Graco testing indicate that anaerobic sealant requires three days to fully cure. Failure to allow three days for full cure may result in parts coming loose during operation.

Torque to 50-ft-lbs (67.5 N•m).

Assemble and torque after displacement rod (15) is assembled through throat retainer (19). See table for torque specifications.

Torque tie bolts (5) in star pattern to 10 ft-lbs (13.5 N•m). Then torque again in star pattern to 50 ft-lbs (67.5 N•m). Finally torque again in star pattern to 120 ft-lbs (163 N•m).

Torque to 200 ft-lbs (271 N•m).

See table for torque specifications.

Must be pressed straight into housing.

Apply anti-seize lubricant to threads.

Ensure u-cup (26) springs face throat cartridge (18).

Ensure u-cup (17) springs face displacement rod (15).

Fully assemble u-cup (17) and bearing (16) onto displacement rod (15) before tightening piston retainer (14).

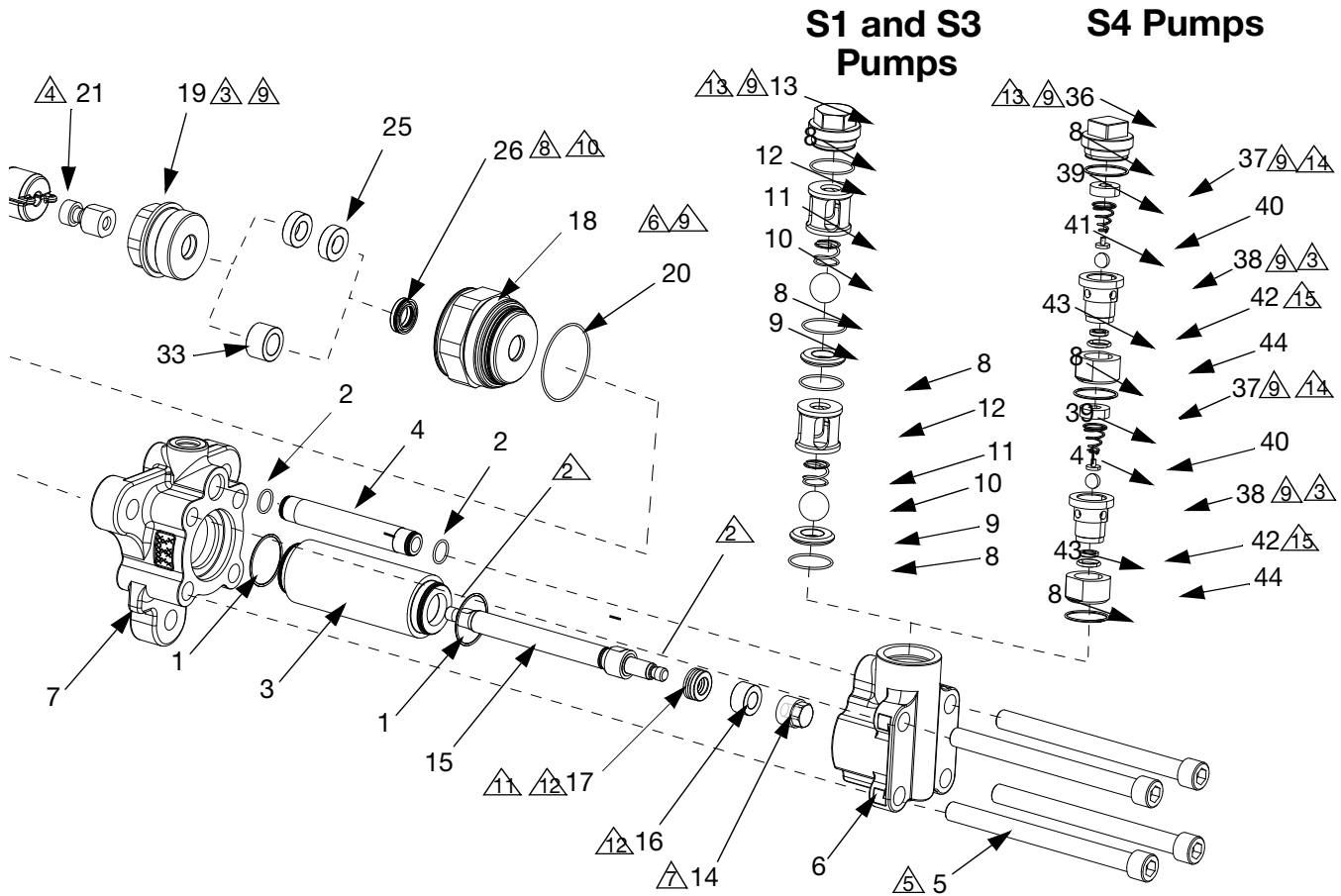
Torque to 70 ft-lbs (95 N•m).

Torque to 30 ft-lbs (41 N•m).

Seat radius (42) must face ball (41).

Pump Size	Torque Specification	
5cc	38 in-lbs (3.2 ft-lbs) (4.3 N•m)	38 in-lbs (3.2 ft-lbs) (4.3 N•m)
10cc	85 ft-lbs (115 N•m)	5.5 ft-lbs (7.45 N•m)
15cc	8.5 ft-lbs (11.5 N•m)	5.5 ft-lbs (7.45 N•m)

20cc, 25cc, 30cc, 35cc, 40cc, 45cc, and 50cc



1. Lubricate seals, o-rings, lead-in's and moving parts with grease.

Apply one stripe of removable strength anaerobic sealant on threads.

NOTICE

Specification sheets and Graco testing indicate that anaerobic sealant requires three days to fully cure. Failure to allow three days for full cure may result in parts coming loose during operation.

Torque to 50-ft-lbs (67.5 N•m).

Assemble and torque after displacement rod (15) is assembled through throat retainer (19). See table below for torque specifications.

Torque tie bolts (5) in star pattern to 10 ft-lbs (13.5 N•m). Then torque again in star pattern to 50 ft-lbs (67.5 N•m). Finally torque again in star pattern to 120 ft-lbs (163 N•m).

Torque to 200 ft-lbs (271 N•m).

See table for torque specifications.

Must be pressed straight into housing.

Apply anti-seize lubricant to threads.

Ensure u-cup (26) springs face throat cartridge (18).

Ensure u-cup (17) springs face displacement rod (15).

Fully assemble u-cup (17) and bearing (16) onto displacement rod (15) before tightening piston retainer (14).

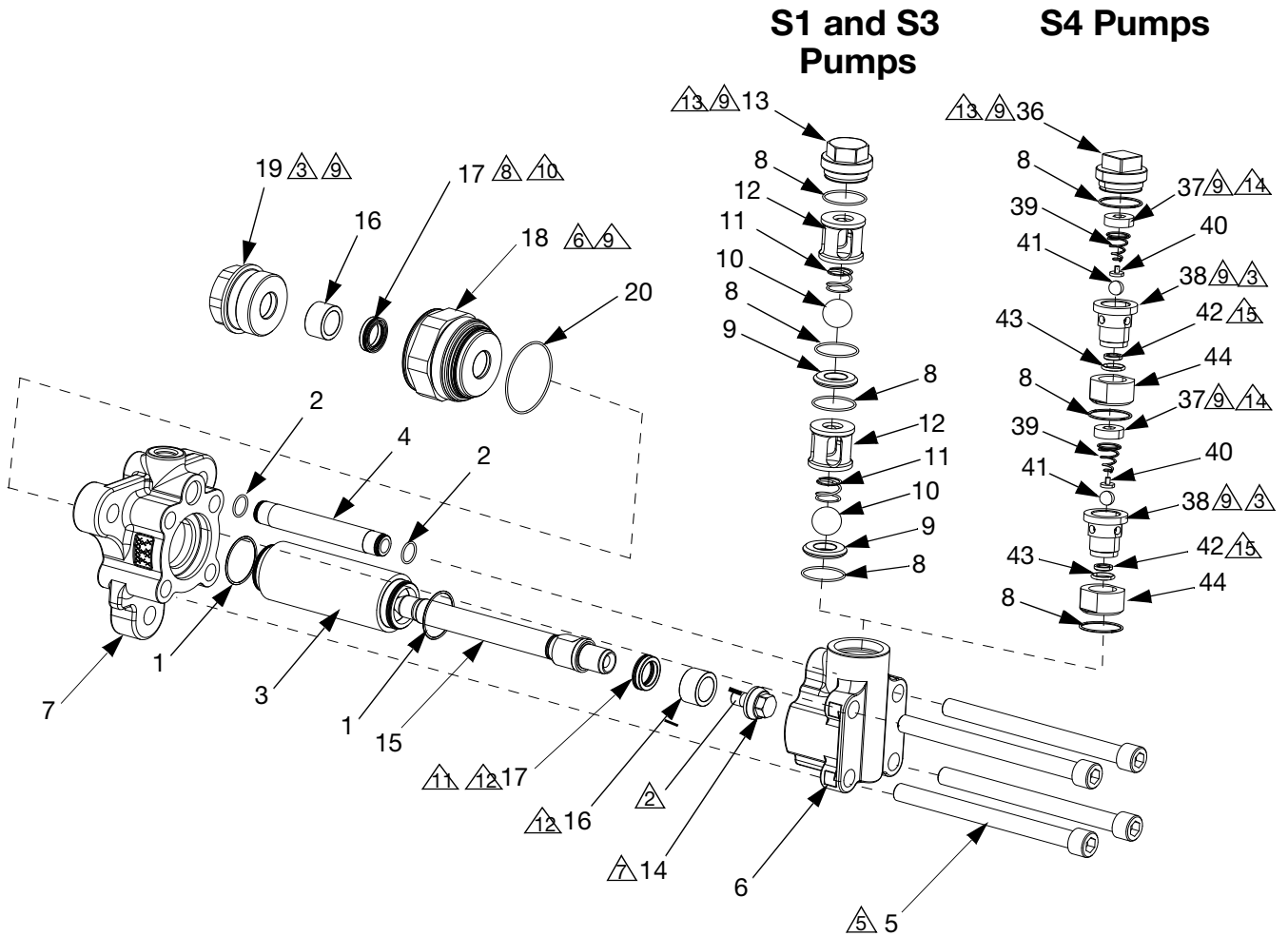
Torque to 70 ft-lbs (95 N•m).

Torque to 30 ft-lbs (41 N•m).

Seat radius (42) must face ball (41).

Pump Size	Torque Specification	
20cc	30-ft-lbs (40.6 N•m)	30-ft-lbs (40.6 N•m)
25cc	30-ft-lbs (40.6 N•m)	30-ft-lbs (40.6 N•m)
30cc	30-ft-lbs (40.6 N•m)	30-ft-lbs (40.6 N•m)
35cc	45-ft-lbs (60.75 N•m)	50-ft-lbs (67.5 N•m)
40cc	45-ft-lbs (60.75 N•m)	50-ft-lbs (67.5 N•m)
45cc	45-ft-lbs (60.75 N•m)	50-ft-lbs (67.5 N•m)
50cc	45-ft-lbs (60.75 N•m)	50-ft-lbs (67.5 N•m)

60cc, 65cc, 70cc, 75cc, 80cc, 86cc, 90cc, 100cc, 105cc, 120cc, 140cc, 150cc, and 160cc



1. Lubricate seals, o-rings, lead-in's and moving parts with grease.

△ Apply one stripe of removable strength anaerobic sealant on threads.

NOTICE
Specification sheets and Graco testing indicate that anaerobic sealant requires three days to fully cure. Failure to allow three days for full cure may result in parts coming loose during operation.

△ Torque to 50-ft-lbs (67.5 N•m).

△ Torque tie bolts (5) in star pattern to 10 ft-lbs (13.5 N•m). Then torque again in star pattern to 50 ft-lbs (67.5 N•m). Finally torque again in star pattern to the model specific torque below:
For 60cc, 65cc, 70cc, 75cc, 80cc, and 86cc:
Torque to 120 ft-lbs (163 N•m).
For 90cc, 100cc, 105cc, 120cc, 140cc, 150cc and 160cc:
Torque to 200-ft-lbs (271 N•m).

△ Torque to 200 ft-lbs (271 N•m).

△ For 60cc, 65cc, 70cc, 75cc, 80cc, and 86cc:
Torque to 80-ft-lbs (108 N•m).
For 90cc, 100cc, 105cc, 120cc, 140cc, 150cc and 160cc:
Torque to 160-ft-lbs (216 N•m).

△ Must be pressed straight into housing.

△ Apply anti-seize lubricant to threads.

△ Ensure u-cup (17) springs face throat cartridge (18).

△ Ensure u-cup (17) springs face displacement rod (15).

△ Fully assemble u-cup (17) and bearing (16) onto displacement rod (15) before tightening piston retainer (14).

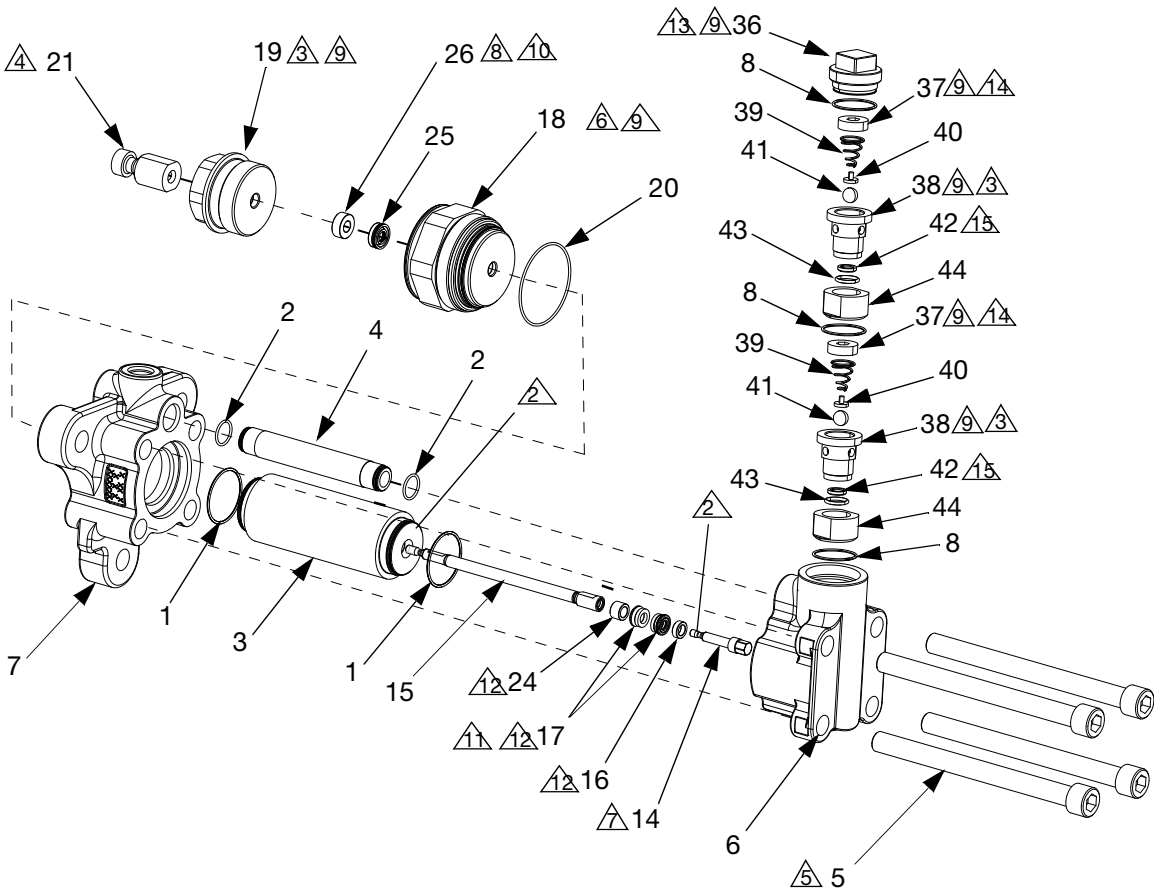
△ Torque to 70 ft-lbs (95 N•m).

△ Torque to 30 ft-lbs (41 N•m).

△ Seat radius (42) must face ball (41).

S5, S6, and S7 Pumps

5cc-10cc



1. Lubricate seals, o-rings, lead-in's and moving parts with grease.

△2 Apply one stripe of removable strength anaerobic sealant on threads.

NOTICE

Specification sheets and Graco testing indicate that anaerobic sealant requires three days to fully cure. Failure to allow three days for full cure may result in parts coming loose during operation.

△3 Torque to 50-ft-lbs (67.5 N•m).

△4 Assemble and torque after displacement rod (15) is assembled through throat retainer (19). See table for torque specifications.

△5 Torque tie bolts (5) in star pattern to 10 ft-lbs (13.5 N•m). Then torque again in star pattern to 50 ft-lbs (67.5 N•m). Finally torque again in star pattern to 120 ft-lbs (163 N•m).

△6 Torque to 200 ft-lbs (271 N•m).

△7 See table for torque specifications.

△8 Must be pressed straight into housing.

△9 Apply anti-seize lubricant to threads.

△10 Ensure u-cup (26) springs face throat cartridge (18).

△11 Ensure u-cups (17) springs face displacement rod (15).

△12 Fully assemble u-cups (17) and bearing (16, 24) onto displacement rod (15) before tightening piston retainer (14).

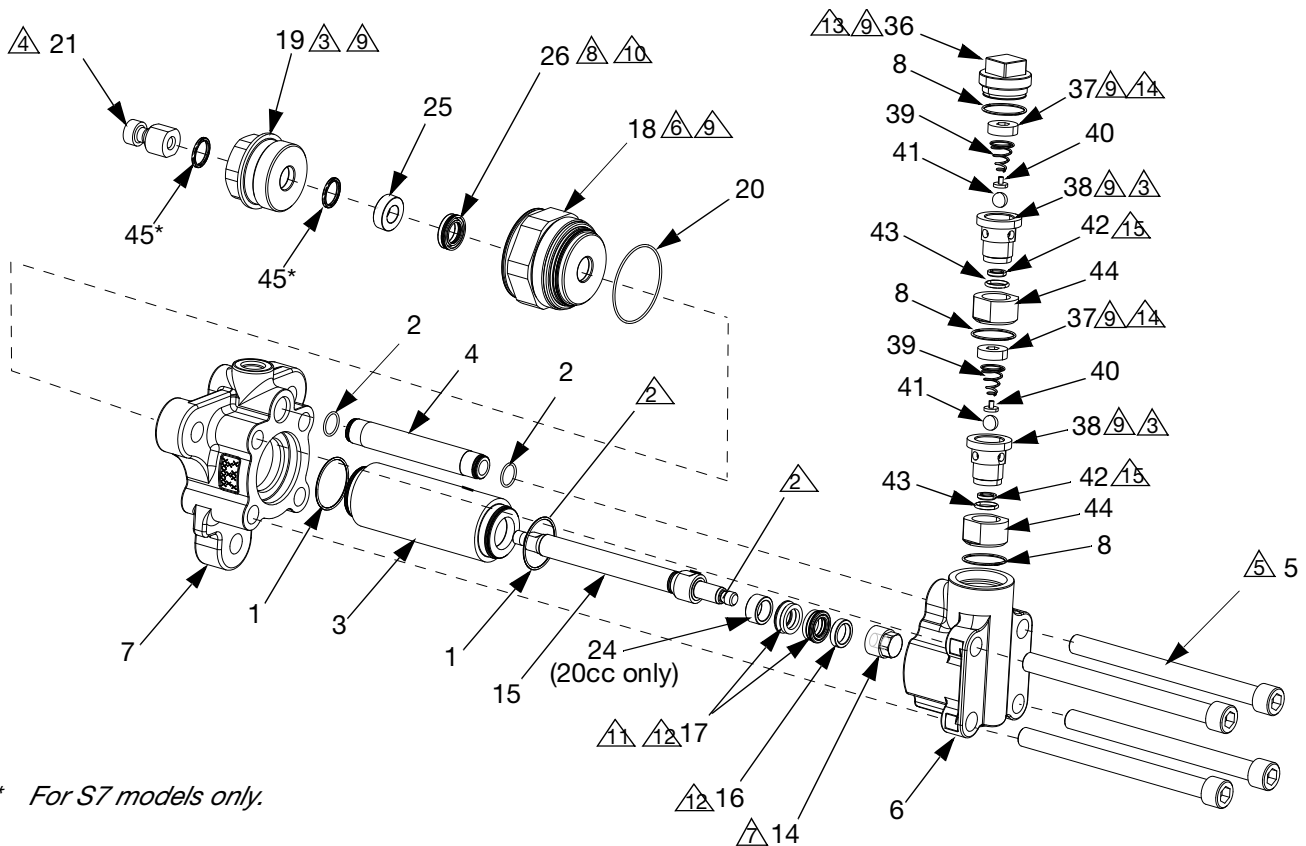
△13 Torque to 70 ft-lbs (95 N•m).

△14 Torque to 30 ft-lbs (41 N•m).

△15 Seat radius (42) must face ball (41).

Pump Size	Torque Specification	
	△4	△7
5cc	38 in-lbs (3.2 ft-lbs) (4.3 N•m)	38 in-lbs (3.2 ft-lbs) (4.3 N•m)
10cc	8 ft-lbs (11.5 N•m)	5.5 ft-lbs (7.45 N•m)

20cc, 30cc, and 40cc



* For S7 models only.

1. Lubricate seals, o-rings, lead-in's and moving parts with grease.

△ Apply one stripe of removable strength anaerobic sealant on threads.

NOTICE

Specification sheets and Graco testing indicate that anaerobic sealant requires three days to fully cure. Failure to allow three days for full cure may result in parts coming loose during operation.

△3 Torque to 50-ft-lbs (67.5 N•m).

△4 Assemble and torque after displacement rod (15) is assembled through throat retainer (19). See table below for torque specifications.

△5 Torque tie bolts (5) in star pattern to 10 ft-lbs (13.5 N•m). Then torque again in star pattern to 50 ft-lbs (67.5 N•m). Finally torque again in star pattern to 120 ft-lbs (163 N•m).

△6 Torque to 200 ft-lbs (271 N•m).

△7 See table for torque specifications.

△8 Must be pressed straight into housing.

△9 Apply anti-seize lubricant to threads.

△10 Ensure u-cup (26) springs face throat cartridge (18).

△11 Ensure u-cups (17) springs face displacement rod (15) and bearing (16).

△12 Fully assemble u-cup (17) and bearing (16)(24, for 20cc pumps only) onto displacement rod (15) before tightening piston retainer (14).

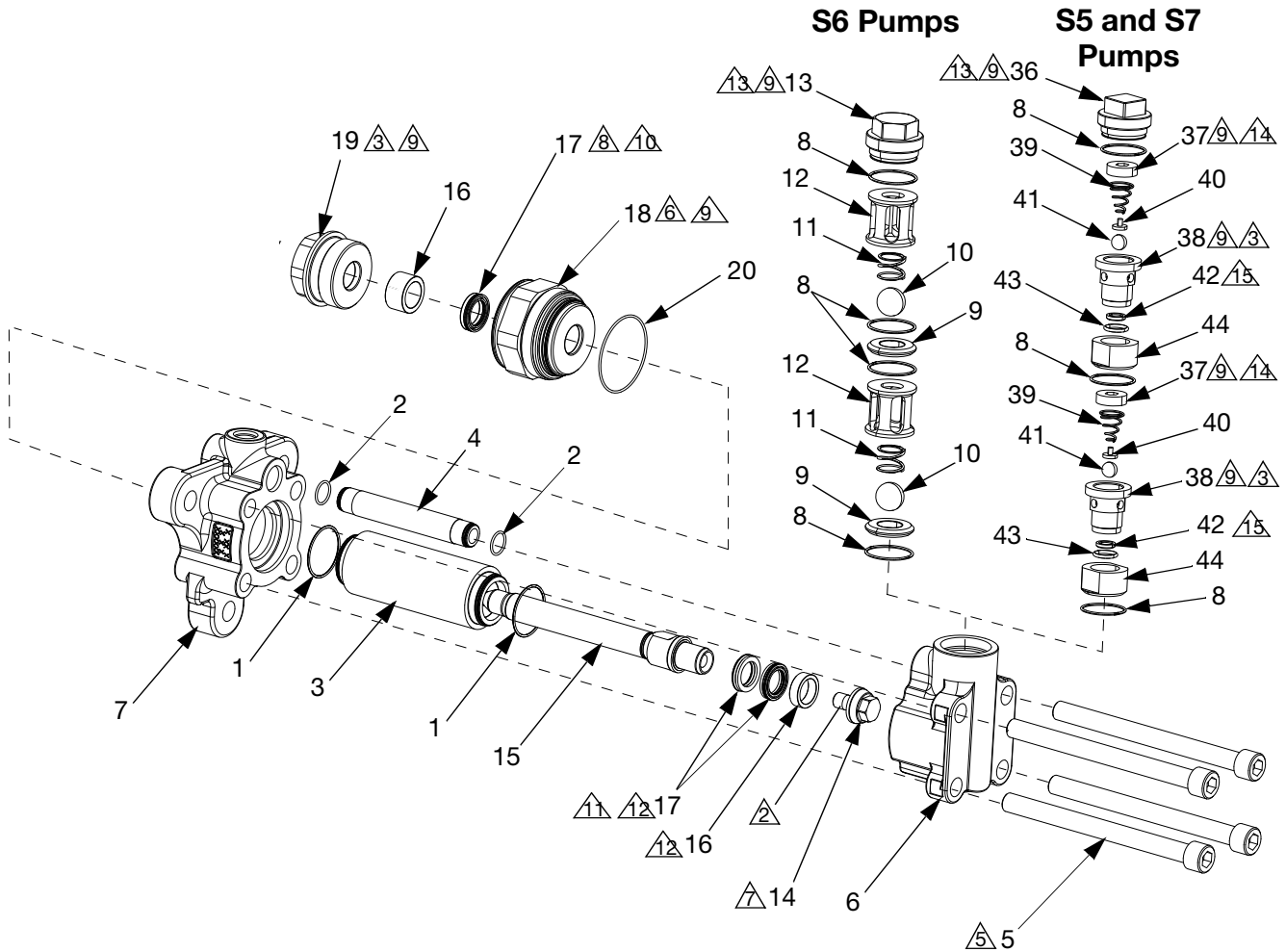
△13 Torque to 70 ft-lbs (95 N•m).

△14 Torque to 30 ft-lbs (41 N•m).

△15 Seat radius (42) must face ball (41).

Pump Size	Torque Specification	
	△4	△7
20cc	30-ft-lbs (40.6 N•m)	30-ft-lbs (40.6 N•m)
30cc	30-ft-lbs (40.6 N•m)	30-ft-lbs (40.6 N•m)
40cc	45-ft-lbs (60.75 N•m)	50-ft-lbs (67.5 N•m)

80cc-160cc



1. Lubricate seals, o-rings, lead-in's and moving parts with grease.

⚠ Apply one stripe of removable strength anaerobic sealant on threads.

NOTICE

Specification sheets and Graco testing indicate that anaerobic sealant requires three days to fully cure. Failure to allow three days for full cure may result in parts coming loose during operation.

⚠ Torque to 50-ft-lbs (67.5 N•m).

⚠ Torque tie bolts (5) in star pattern to 10 ft-lbs (13.5 N•m). Then torque again in star pattern to 50 ft-lbs (67.5 N•m). Finally torque again in star pattern to the model specific torque below:
 For 80cc:
 Torque to 120 ft-lbs (163 N•m).
 For 100cc:
 Torque to 200-ft-lbs (271 N•m).

⚠ Torque to 200 ft-lbs (271 N•m).

⚠ For 80cc:
 Torque to 80-ft-lbs (108 N•m).
 For 100cc:
 Torque to 160-ft-lbs (216 N•m).

⚠ Must be pressed straight into housing.

⚠ Apply anti-seize lubricant to threads.

⚠ Ensure u-cups (17) springs face throat cartridge (18).

⚠ Ensure u-cups (17) springs face displacement rod (15).

⚠ Fully assemble u-cups (17) and bearing (16) onto displacement rod (15) before tightening piston retainer (14).

⚠ Torque to 70 ft-lbs (95 N•m).

⚠ Torque to 30 ft-lbs (41 N•m).

⚠ Seat radius (42) must face ball (41).

Pump Parts

Ref.	Part	Description	Qty.
1✓❖◆*		O-RING, cylinder	2
2✓❖◆*		O-RING, crossover tube	2
3❖		CYLINDER, pump	1
4†		TUBE, crossover, pump	1
5	258790	BOLT, tie	4
6		HOUSING, inlet	1
7		HOUSING, outlet	1
8◆†		O-RING, inlet	4
	258775	KIT, package of 4	-
	258776	KIT, package of 16	-
9†❖		SEAT, carbide	2
10†❖		BALL, sst	2
11	258784	SPRING, ball check	2
12	258785	HOUSING, ball cage (S1 & S3)	2
	25R214	HOUSING, ball cage (S6)	2
	258787	CAP, inlet valve (S1 & S3)	1
13	25R215	CAP, inlet valve (S6)	1
14*		RETAINER, piston	1
15*		ROD, displacement	1
16◆*		BEARING, piston	1(2)
17◆*		SEAL, piston	1(2)
18✖		CARTRIDGE, throat	1
19★		RETAINER, throat	1
20*	117286	O-RING, throat cartridge	1
21*		ADAPTER, rod (see Table 1)	1
24◆		BEARING, piston rod	1
25◆*		BEARING, throat	1
26◆*		SEAL, throat	1
30❖◆*		TOOL, rod installation	1
31◆		TOOL, piston seal installation	1
33		SPACER, throat	1
36	17E794	CAP, inlet valve	1
37•	17Y222	RETAINER, spring	2
38•	17Y345	HOUSING, check valve	2
39#•	131767	SPRING, conical	2
40•	17Y400	RETAINER, housing	2
41#•		BALL	2
42#•		SEAT, carbide	2
43#•		O-RING	2
44•	17E786	RETAINER, check valve	2
45	130989	O-RING, quad (S7 only)	2
46❖◆*		TOOL, rod/cylinder installation (S6, 160cc only)	1

‡ See Cross Over Tube Kits on page 13 for kit numbers.

✖ See Throat Cartridge Kits on page 13 for kit numbers.

★ See Throat Retainer Kits on page 13 for kit numbers.

Table 1: Adapter Kits

Pump Model	Pump Size	Adapter Kit
L005S1	5cc	25P039
L010S1 and L010S5	10cc	258966
L010S3	10cc	24U649
L015S1	15cc	258966
L020S1 and L020S5	20cc	258967
L020S3	20cc	24U650
L025S1	25cc	258967
L030S1 / L030S7	30cc	258967
L035S1	35cc	258786
L040S1 and L040S4	40cc	258786
L040S5	40cc	25N989
L045S1	45cc	258786
L050S1	50cc	258786
L060S1 - L160S1	60cc - 160cc	Not included
L080S5 - L100S5	80cc - 100cc	Not included
L080S6 - L160S6	80cc - 160cc	Not included

✓ Refer to Table 2: Cylinder O-ring Kits for kit number.

❖ Refer to Table 3: Cylinder Kits for kit number.

◆ Refer to Table 5: Seal Kits for kit number.

* Refer to Table 6: Displacement Rod Kits for kit number.

† Included in Kit 258783 (S1 and S3).

Included in Kit 25B124 (S4, S5, and S7).

• Included in Kit 25B123 (S4, S5, and S7).

❖ Included in Kit 25R213 (S6).

Table 2: Cylinder O-ring Kits

Pump Model	Pump Size	Cylinder O-ring Kit
L005S1 / L005S4	5cc	258774
L005S5	5cc	258773
L010S1 / L010S4	10cc	258774
L010S5	10cc	258773
L010S3	10cc	258774
L015S1 / L015S4	15cc	
L020S1 / L020S4	20cc	258773
L020S5	20cc	
L020S3	20cc	258774
L025S1 / L025S4	25cc	
L030S1 / L030S4	30cc	258773
L030S7	30cc	
L035S1 / L035S4	35cc	258774
L040S1 / L040S4	40cc	258773
L040S5	40cc	258774
L045S1 / L045S4	45cc	
L050S1 / L050S4	50cc	
L060S1 / L060S4	60cc	
L065S1 / L065S4	65cc	
L070S1 / L070S4	70cc	
L075S1 / L075S4	75cc	
L080S1 / L080S4	80cc	
L080S5 / L080S6	80cc	258773
L086S1 / L086S4	86cc	258774
L090S1 / L090S1	90cc	258773
L100S1 / L100S1 / L100S5 / L100S6	100cc	
L105S1 / L105S4	105cc	
L120S1 / L120S4	120cc	
L140S1 / L140S4	140cc	
L150S1 / L150S4	150cc	
L160S1 / L160S4	160cc	
L160S6	160cc	25R206

Table 3: Cylinder Kits

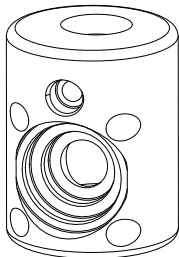
Pump Model	Pump Size	Cylinder Kit
L005S1 / L005S4	5cc	262557
L005S5	5cc	25N980
L010S1 / L010S4	10cc	258925
L010S3	10cc	24U651
L010S5	10cc	25E417
L015S1 / L015S4	15cc	258931
L020S1 / L020S4	20cc	258937
L020S3	20cc	24U652
L020S5	20cc	25E418
L025S1 / L025S4	25cc	258943
L030S1 / L030S4	30cc	258949
L030S7	30cc	25R241
L035S1 / L035S4	35cc	24R310
L040S1 / L040S4	40cc	258795
L040S5	40cc	25E419
L045S1 / L045S4	45cc	24R311
L050S1 / L050S4	50cc	258801
L060S1 / L060S4	60cc	258807
L065S1 / L065S4	65cc	24H998
L070S1 / L070S4	70cc	25C252
L075S1 / L075S4	75cc	24N821
L080S1 / L080S4	80cc	258813
L080S5 / L080S6	80cc	25E420
L086S1 / L086S4	86cc	24H999
L090S1 / L090S4	90cc	24T165
L100S1 / L100S4	100cc	258819
L100S5 / L100S6	100cc	25E469
L105S1 / L105S4	105cc	24R011
L120S1 / L120S4	120cc	258825
L140S1 / L140S4	140cc	24T166
L150S1 / L150S4	150cc	24T167
L160S1 / L160S4	160cc	258831
L160S6	160cc	25R207

Table 4: Various Kits

Pump Model	Pump Size	‡ Crossover Tube Kit		Inlet Housing Kit	Outlet Housing Kit	✱ Throat Cartridge Kit	★ Throat Retainer Kit
		Bar Stock Inlet*	Cast inlet*				
L005S1 / L005S4 / L005S5	5cc	258789	24E557	258792	258791	262558	262559
L010S1 / L010S4 / L010S5	10cc					258928	258927
L010S3	10cc					24U647	258927
L015S1 / L015S4	15cc					258934	258933
L020S1 / L020S4 / L020S5	20cc					258940	258939
L020S3	20cc					24U648	258939
L025S1 / L025S4	25cc					258946	258945
L030S1 / L030S4	30cc					258952	258951
L030S7	30cc					258952	25R244
L035S1 / L035S4	35cc					24R316	24R314
L040S1 / L040S4 / L040S5	40cc					258798	258797
L045S1 / L045S4	45cc					24R317	24R315
L050S1 / L050S4	50cc					258804	258803
L060S1 / L060S4	60cc					258810	258809
L065S1 / L065S4	65cc					24J007	24J010
L070S1 / L070S4	70cc					25C254	25C255
L075S1 / L075S4	75cc					24N819	24N818
L080S1 / L080S4 / L080S5 / L080S6	80cc					258816	258815
L086S1 / L086S4	86cc					24J008	24J011
L090S1 / L090S1	90cc					24T175	24T171
L100S1 / L100S1 / L100S5 / L100S6	100cc	258822	258821				
L105S1 / L105S4	105cc	24R014	24R013				
L120S1 / L120S4	120cc	258828	258827				
L140S1 / L140S4	140cc	24T176	24T172				
L150S1 / L150S4	150cc	24T177	24T173				
L160S1 / L160S4	160cc	258834	258833				
L160S6	160cc		25R208	25R211	25R212	258834	258833

* See figure below for inlet types:

Bar Stock Inlet



Cast Inlet

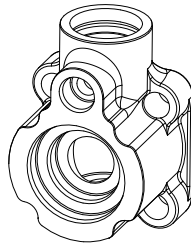


Table 5: Seal Kits

Pump Model	Pump Size	Seal Kit	Reference Number and Quantity Included in Kit												
			1	2	8	16	17	24	25	26	30	31	45	46	
L005S1 / L005S4	5cc	262561	2	2	4	1	1			1	1	1			
L005S5	5cc	25N981	2	2	4	1	2	2		1	1	1			
L010S1 / L010S4	10cc	258923	2	2	4	1	1			1	1	1			
L010S3	10cc	24U653	2	2	4	1	1			1	1	1			
L010S5	10cc	25E421	2	2	4	1	2	1		1	1	1			
L015S1 / L015S4	15cc	258929	2	2	4	1	1			1	1	1			
L020S1 / L020S4	20cc	258935	2	2	4	1	1			1	1	1			
L020S3	20cc	24U654	2	2	4	1	1			1	1	1			
L020S5	20cc	25E422	2	2	4	1	2	1		1	1	1			
L025S1 / L025S4	25cc	258941	2	2	4	1	1			1	1	1			
L030S1 / L030S4	30cc	258947	2	2	4	1	1			1	1	1	1		
L030S7	30cc	25R242	2	2	4	1	2			1	1	1	1	2	
L035S1 / L035S4	35cc	24R306	2	2	4	1	1			1	1	1	1		
L040S1 / L040S4	40cc	258793	2	2	4	1	1			1	1	1	1		
L040S5	40cc	25E423	2	2	4	1	2			1	1	1	1		
L045S1 / L045S4	45cc	24R307	2	2	4	1	1			1	1	1	1		
L050S1 / L050S4	50cc	258799	2	2	4	1	1			1	1	1	1		
L060S1 / L060S4	60cc	258805	2	2	4	2	2					1	1		
L065S1 / L065S4	65cc	24J002	2	2	4	2	2					1	1		
L070S1 / L070S4	70cc	25C253	2	2	4	2	2					1	1		
L075S1 / L075S4	75cc	24N820	2	2	4	2	2					1	1		
L080S1 / L080S4	80cc	258811	2	2	4	2	2					1	1		
L080S5 / L080S6	80cc	25E424	2	2	4	1	2					1	1		
L086S1 / L086S4	86cc	24J003	2	2	4	2	2					1	1		
L090S1 / L090S4	90cc	24T162	2	2	4	2	2					1	1		
L100S1 / L100S4	100cc	258817	2	2	4	2	2					1	1		
L100S5 / L100S6	100cc	25E470	2	2	4	1	2					1	1		
L105S1 / L105S4	105cc	24R009	2	2	4	2	2					1	1		
L120S1 / L120S4	120cc	258823	2	2	4	2	2					1	1		
L140S1 / L140S4	140cc	24T163	2	2	4	2	2					1	1		
L150S1 / L150S4	150cc	24T164	2	2	4	2	2					1	1		
L160S1 / L160S4	160cc	258829	2	2	4	2	2					1	1		
L160S6	160cc	25R209	2	2	4	2	3					1	1		1

Table 6: Displacement Rod Kits

Pump Model	Pump Size	Displacement Rod Kit	Reference Number and Quantity Included in Kit													
			1	2	14	15	16	17	20	21	24	25	26	30	45	46
L005S1 / L005S4	5cc	262562	2	2	1	1	1	1	1	1		1	1	1		
L005S5	5cc	25N979	2	2	1	1	1	2	1	1	1	1	1	1		
L010S1 / L010S4	10cc	258924	2	2	1	1	1	1	1	1		1	1	1		
L010S3	10cc	24U655	2	2	1	1	1	1	1	1		1	1	1		
L010S5	10cc	25E472	2	2	1	1	1	2	1	1	1	1	1	1		
L015S1 / L015S4	15cc	258930	2	2	1	1	1	1	1	1		1	1	1		
L020S1 / L020S4	20cc	258936	2	2	1	1	1	1	1	1		1	1	1		
L020S3	20cc	24U656	2	2	1	1	1	1	1	1		1	1	1		
L020S5	20cc	25E473	2	2	1	1	1	2	1	1	1	1	1	1		
L025S1 / L025S4	25cc	258942	2	2	1	1	1	1	1	1		1	1	1		
L030S1 / L030S4	30cc	258948	2	2	1	1	1	1	1	1		1	1	1		
L030S7	30cc	25R243	2	2	1	1	1	2	1	1		1	1	1	2	
L035S1 / L035S4	35cc	24R308	2	2	1	1	1	1	1	1		1	1	1		
L040S1 / L040S4	40cc	258794	2	2	1	1	1	1	1	1		1	1	1		
L040S5	40cc	25E475	2	2	1	1	1	2	1	1		1	1	1		
L045S1 / L045S4	45cc	24R309	2	2	1	1	1	1	1	1		1	1	1		
L050S1 / L050S4	50cc	258800	2	2	1	1	1	1	1	1		1	1	1		
L060S1 / L060S4	60cc	258806	2	2	1	1	2	2	1					1		
L065S1 / L065S4	65cc	24J004	2	2	1	1	2	2	1					1		
L070S1 / L070S4	70cc	25C251	2	2	1	1	2	2	1					1		
L075S1 / L075S4	75cc	24N823	2	2	1	1	2	2	1					1		
L080S1 / L080S4	80cc	258812	2	2	1	1	2	2	1					1		
L080S5 / L080S6	80cc	25E476	2	2	1	1	1	2	1			1	1	1		
L086S1 / L086S4	86cc	24J005	2	2	1	1	2	2	1					1		
L090S1 / L090S4	90cc	24T158	2	2	1	1	2	2	1					1		
L100S1 / L100S4	100cc	258818	2	2	1	1	2	2	1					1		
L100S5 / L100S6	100cc	25E477	2	2	1	1	1	2	1			1	1	1		
L105S1 / L105S4	105cc	24R010	2	2	1	1	2	2	1					1		
L120S1 / L120S4	120cc	258824	2	2	1	1	2	2	1					1		
L140S1 / L140S4	140cc	24T159	2	2	1	1	2	2	1					1		
L150S1 / L150S4	150cc	24T160	2	2	1	1	2	2	1					1		
L160S1 / L160S4	160cc	258830	2	2	1	1	2	2	1					1		
L160S6	160cc	25R210	2	2	1	1	2	3	1					1		1

California Proposition 65

CALIFORNIA RESIDENTS

 **WARNING:** Cancer and reproductive harm – www.P65warnings.ca.gov.

Graco Information

Sealant and Adhesive Dispensing Equipment

For the latest information about Graco products, visit www.graco.com.

For patent information, see www.graco.com/patents.

TO PLACE AN ORDER, contact your Graco distributor, go to www.graco.com, or call to identify the nearest distributor.

If calling from the USA: 1-800-746-1334

If calling from outside the USA: 0-1-330-966-3000

All written and visual data contained in this document reflects the latest product information available at the time of publication. Graco reserves the right to make changes at any time without notice.

Original instructions. This manual contains English. MM 3A0281

Graco Headquarters: Minneapolis

International Offices: Belgium, China, Japan, Korea

GRACO INC. AND SUBSIDIARIES • P.O. BOX 1441 • MINNEAPOLIS MN 55440-1441 • USA

Copyright 2009, Graco Inc. All Graco manufacturing locations are registered to ISO 9001.

www.graco.com

Revision V, October 2021