

USP Valve Weld Bar Kit

3A2613C

EN

Support bracket used with Uniblock Series Progressive Valves for oil and grease lubrication only.

Part No. 24N007

USP 6/8 Outlets

Part No. 24N008

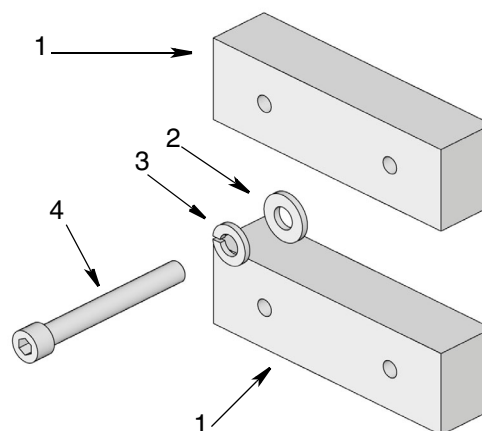
USP 10/12 Outlets

Part No. 24N009

USP 14/16 Outlets



Important Safety Instructions
Read all warnings and instructions in this manual and in the USP Valve instruction manual. Save all instructions.



Installation

Follow installation guidelines for proper functioning of the block. Due to very tight clearances between the piston and the bore, proper mounting surface flatness is critical to avoid seizing of the position.

Recommendations

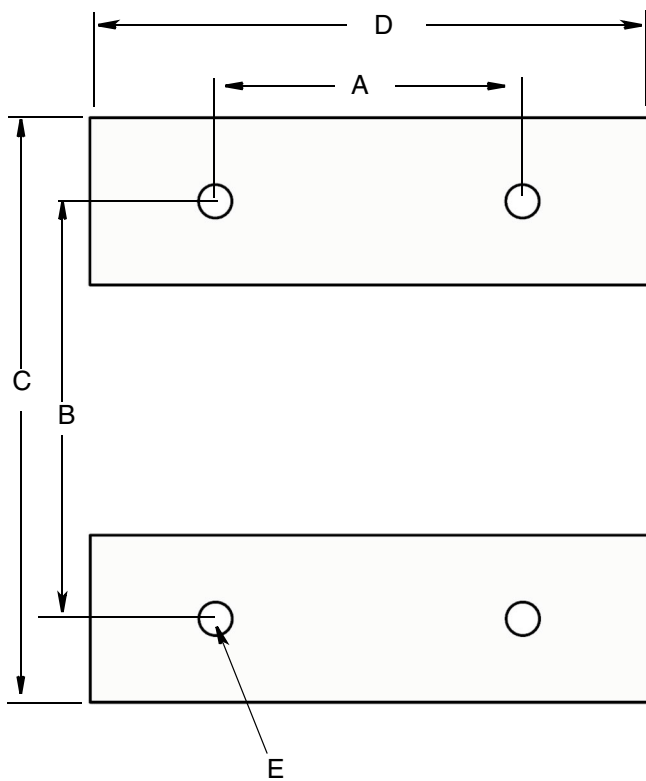
- Select a flat surface to mount block. If using a weld bar, take measures to prevent welding distortions that affect surface flatness. The flatness should not exceed a variation of more than 0.04 inches (1.02 mm). Use of washers as shims may help to reduce the variation.
- Ensure a proper torque is achieved for the installation, considering vibration, movement, etc. Large surface flatness variations will require a lower torque to avoid piston seizing. Minimum recommended torque is 4 ft-lbs (5.4 N.m) to a maximum of 14 ft-lbs (18.98 N.m).

FIG. 1

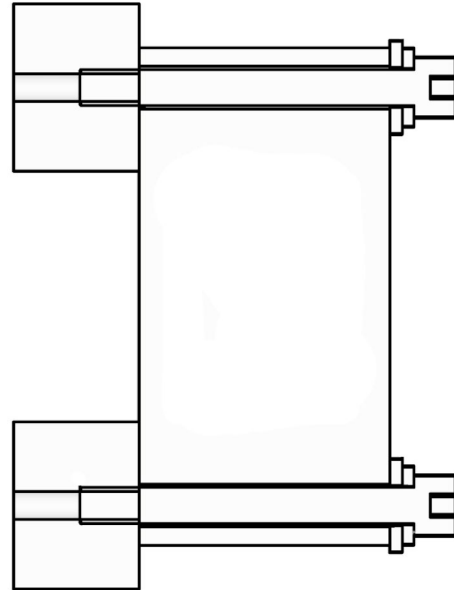
| Ref | Description | Quantity / Model | | |
|-----|--------------------|------------------|--------|--------|
| | | 24N007 | 24N008 | 24N009 |
| 1 | BRACKET, weld, USP | 2 | 2 | 2 |
| 2 | WASHER, flat | 4 | 4 | 4 |
| 3 | WASHER, lock | 4 | 4 | 4 |
| 4 | SCREW, cap | 4 | 4 | 4 |

Dimensions

| KIT P/N | USP Outlets | A in. (mm) | B in. (mm) | C in. (mm) | D in. (mm) | E Tapped Thread Size |
|---------|-------------|---------------|---------------|---------------|---------------|-------------------------|
| 24N007 | 6/8 | 1.84 (46.7) | 2.50 (63.5) | 3.50 (88.9) | 3.34 (84.8) | 1/4-20 UNC |
| 24N008 | 10/12 | 2.05 (52.8) | 2.50 (63.5) | 3.50 (88.9) | 3.58 (90.9) | 1/4-20 UNC |
| 24N009 | 14/16 | 2.40 (60.9) | 2.50 (63.4) | 3.50 (88.9) | 3.90 (99.1) | 1/4-20 UNC |



Side View



All written and visual data contained in this document reflects the latest product information available at the time of publication. Graco reserves the right to make changes at any time without notice.

For patent information, see www.graco.com/patents.

Original instructions. This manual contains English. MM 3A2613

Graco Headquarters: Minneapolis
International Offices: Belgium, China, Japan, Korea

GRACO INC. AND SUBSIDIARIES • P.O. BOX 1441 • MINNEAPOLIS MN 55440-1441 • USA

Copyright 2012, Graco Inc. All Graco manufacturing locations are registered to ISO 9001.

www.graco.com

Revised September 2012