

# Diaphragm Kits

Endura-Flo™ 3D150, 3D350, 4D150, and 4D350 Diaphragm Pumps

3A3698F

EN



### Important Safety Instructions

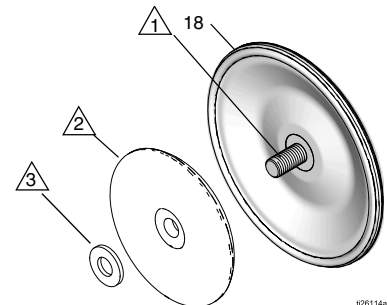
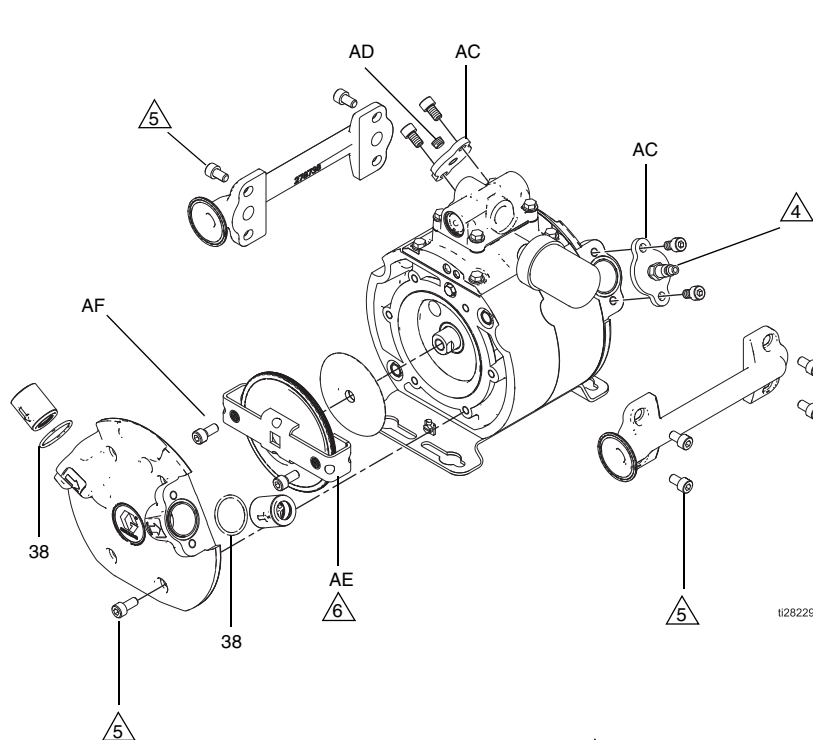
Read all warnings and instructions in the Endura-Flo Diaphragm Pump manual 333015. Save all instructions.

**Kit 17H302, for 3D150 and 4D150 Pumps**

**Kit 17H303, for 3D350 and 4D350 Pumps**

\* Not shown. Install when existing parts are damaged, worn, or not usable. Consult the manual for installation instructions.

Ref.	Description	Qty.
18	DIAPHRAGM, overmolded,	2
38	O-RING, manifold	4
AC	TOOL, air plate	2
AD	PLUG, pipe	1
AE	TOOL, diaphragm removal	1
AF	SCREWS, diaphragm removal	2
AG*	TUBING, breather valve (For 3D pumps. Cut to length as required, typically 4.5 in [114 mm], but depends on mounting configuration.)	1
AH*	BEARING, shaft	4
AJ*	SEAL, u-cup	4
AK*	SEAL, L-cup	2
AL*	TOOL, bearing installation	1



- 1 Apply primerless removable (blue) thread locker to the threads (Loctite® 243 or equivalent). *Loctite is a registered trademark of the Henkel Corporation.*
- 2 Rounded side must face the diaphragm.
- 3 Washers are used on 350 models only.
- 4 Supply shop air to move shaft for diaphragm removal and installation. Use about 20 psi (0.14 MPa, 1.4 bar). Do not use over 30 psi (0.21 MPa, 2.1 bar). Air fitting not supplied.
- 5 Torque in crisscross pattern to:  
**4D150 Models:** 20-25 ft-lb (27-34 N•m).  
**4D350 Models:** 28-33 ft-lb (38-45 N•m).  
 See torque instructions in manual.

6 Only use the diaphragm removal tool when diaphragms cannot be removed by hand. Use of this tool during installation will damage the diaphragm.