

LineLazer™ ES 1000 Second Battery Kit

3A4697B

EN

Kit 24Z724

*For the application of line striping materials.**For professional use only.**Not approved for use in explosive atmospheres or hazardous locations.*

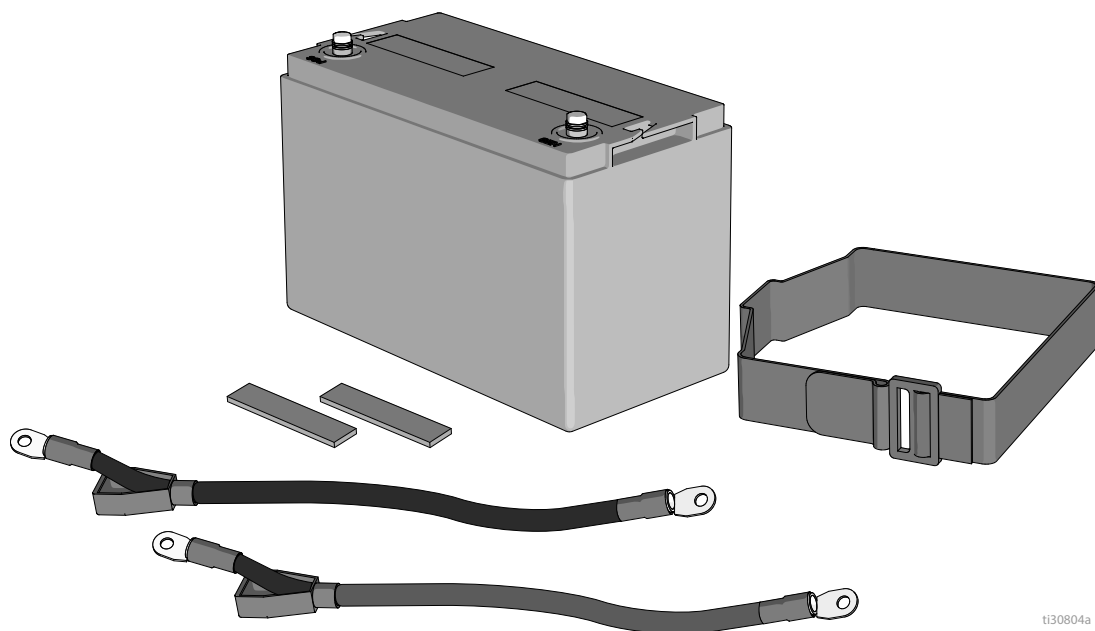
Important Safety Instructions

Read all warnings and instructions in this manual and in related manuals.

Be familiar with the controls and the proper usage of the equipment.

Save these instructions.

Related Manuals:	
ES1000	
3A4603	Operations, Repair, and Parts Manual

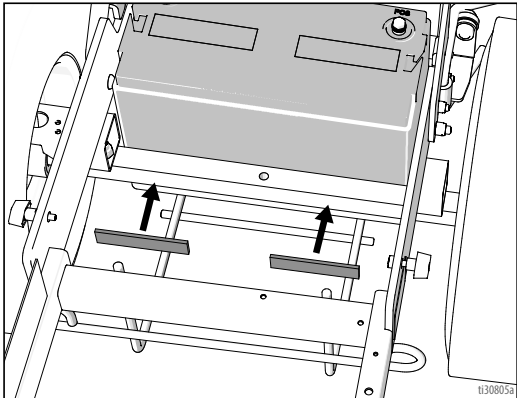


ti30804a

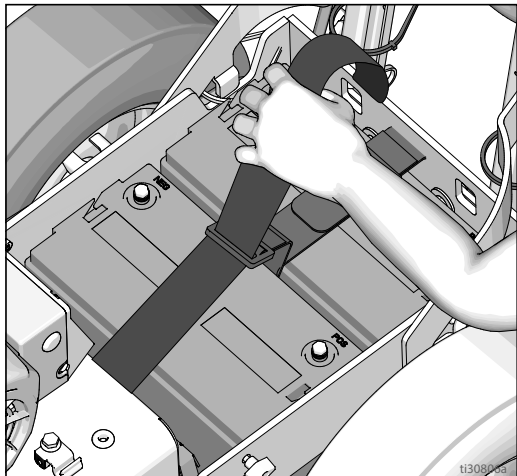
Adding Second Battery Kit

To extend runtime, a second battery can be added to the LineLazer ES 1000. Assemble the second battery in parallel with the first battery. Make sure to only use two of the same type of batteries.

- 1. Disconnect cables from battery.
- 2. Assemble battery bumpers (2).



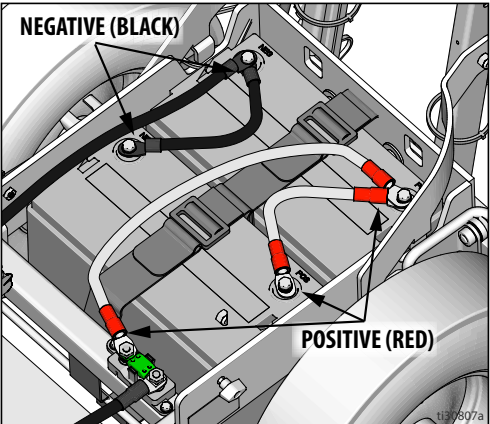
- 3. Strap (5) down the battery (1).



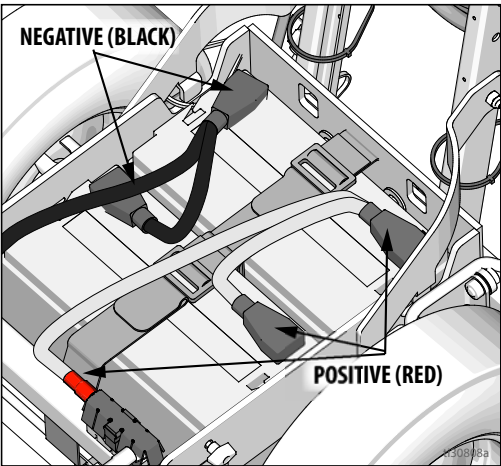
NOTICE

When assembling the battery cables, do NOT reverse the polarity of the cables. This can result in damage to the inverter.

- 4. Connect red wire (3) from positive (+) terminal on battery one to positive (+) terminal on battery two.
- 5. Connect black wire (4) from negative (-) terminal on battery one to negative (-) terminal on battery two.



- 6. Make sure all terminals are properly protected with terminal covers.



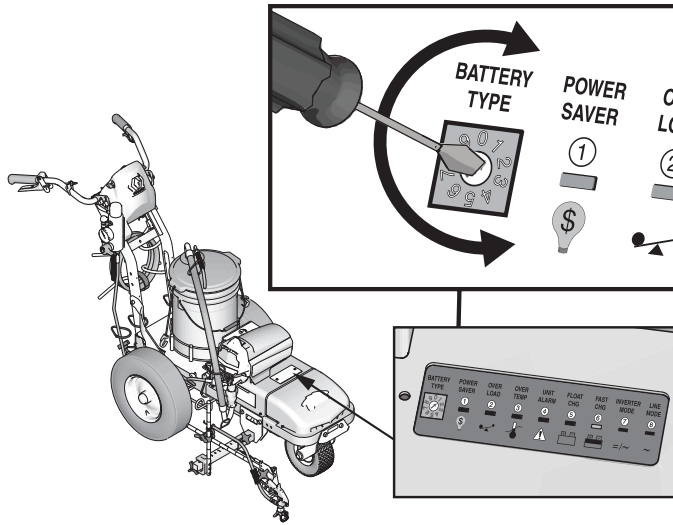
Ref.	Part	Description	Qty
1	17N448	BATTERY	1
2	17P800	BUMPER	2
3	17P455	CABLE, red, .625 x 1'	1
4	17P454	CABLE, black, .625 x 1'	2
5	129629	STRAP, retaining	1

Battery Type and Charging Profiles

Graco recommends using a 12V 100 Ahr Absorbent Glass Mat (AGM) **DEEP CYCLE** battery. The charger is set for this charging profile from the factory. If a different battery is used, the charging profile can be set at the LED Status Center. The initial charge rate is 30 amps.

Only use batteries that allow an initial charge rate of 30 amps or higher.

Use a small flat head screw driver to turn the arrow to point at the number that correlates with the chosen battery.



BATTERY TYPE SELECTOR SETTINGS

Switch Position	Description	Boost/Vdc	Float/Vdc
0	Charger Off		
1	Gel USA	14.0	13.7
2	AGM 1	14.1	13.4
3	AGM 2 (Graco Supplied)	14.6	13.7
4	Sealed Lead Acid	14.4	13.6
5	Gel Euro	14.4	13.8
6	Open Lead Acid	14.8	13.3
7	LiFePO4	14.4	14.4
8	De-sulphation	15.5 (4 hours then Off)	
9	Not used		

t130488a

*All written and visual data contained in this document reflects the latest product information available at the time of publication.
Graco reserves the right to make changes at any time without notice.*

For patent information, see www.graco.com/patents

Original instructions. This manual contains English. MM 3A4697

Graco Headquarters: Minneapolis

International Offices: Belgium, China, Japan, Korea

GRACO INC. AND SUBSIDIARIES • P.O. BOX 1441 • MINNEAPOLIS MN 55440-1441 • USA
Copyright 2017, Graco Inc. All Graco manufacturing locations are registered to ISO 9001.

www.graco.com
Revision B, May 2019