

# RTX2500 Texture Sprayers

For Water-Based Materials Only.

3A5430A - EN

## ⚠ WARNING



Read Operation manual 3A3258 for complete instructions and warnings. Manuals are available by calling Graco at 1-800-690-2894, or at [www.graco.com](http://www.graco.com).

For Technical Assistance call 1.800.543.0339

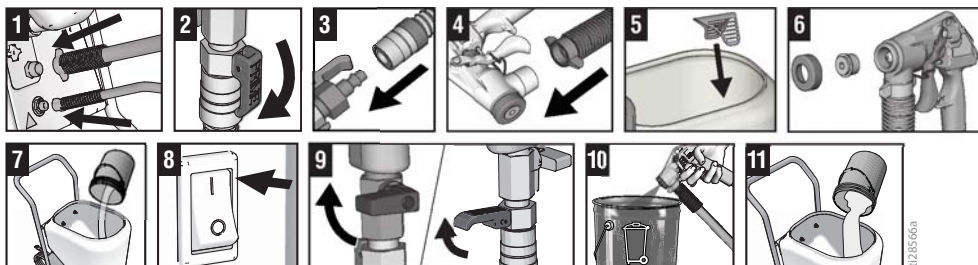
This Quick Guide is not a substitute for reading and understanding all operation manuals and warning labels supplied with the equipment. It is important that you read and understand all warnings and instructions before operating this equipment.



Follow the pressure relief procedure and wear protective equipment including but not limited to protective eye wear.

**FAILURE TO FOLLOW ALL WARNINGS CAN RESULT IN SERIOUS INJURY.**

## SETUP



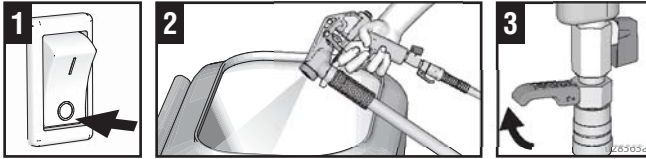
Step 1: Connect air hose and material hose to sprayer air and material hose outlets. Step 2: Close prime valve and close gun air control valve. Step 3: Connect air hose to gun. Step 4: Connect material hose to gun. Step 5: Install burp guard. Step 6: Install spray nozzle. Step 7: Pour one gallon of water into material hopper. Step 8: Turn ON/OFF switch to **ON** position. Step 9: Close gun air control valve.

Open prime valve to start flow. Step 10: Point gun into waste bucket and pull trigger to pump water through the system until material hopper is empty. Step 11: See Mixing Material. Add premixed mix to material hopper. Step 12: Trigger gun into a waste bucket until a steady stream of material sprays out of the gun. Release trigger.

## NOZZLE SELECTION CHART

| Application               | WideTex™ Disc |            | Nozzle (mm) | Air Volume     |
|---------------------------|---------------|------------|-------------|----------------|
|                           | Standard      | Hardened   |             |                |
| Simulated Acoustic - Fine | W6            | W6H        | 4           | high           |
| - Medium                  | W8            | W8H        | 6           | high           |
| - Course                  | W10           | W10H       | 8- 10       | high           |
| Fog                       | W4            | W4H        | 3           | high           |
| Orange peel               | W4 or W6      | W4H or W6H | 3 - 8       | medium to high |
| Splatter coat             | W6 or W8      | W6H or W8H | 6 - 10      | low to medium  |
| Knockdown                 | W6 or W8      | W6H or W8H | 6 - 8       | low            |

# PRESSURE RELIEF PROCEDURE



## OPERATION

### Soft Start/Smart Start™

- Smart Start keeps the sprayer at full operating pressure and allows the sprayer to spray immediately when the gun is triggered.
- Soft Start prevents a large “splotch” of material from being discharged from the gun when trigger is pulled after the sprayer has sat idle for a period of time.

### Adjusting the System

Sufficient fluid output (volume and pressure) and good atomization is a balance of atomizing air, material thickness/material flow and nozzle selection. Achieving the correct balance for your application requires experimentation to achieve desired results. Keep in mind these important points when adjusting gun:

- To select correct nozzle for your applications, consider size of aggregate in material and coarseness of spray pattern. Remember the larger the nozzle, the larger the pattern.
- Start sprayer with gun air control valve completely open. If needed, slowly close gun air control valve until you get a good spray pattern. Use minimum amount of air at spray gun to achieve proper spray pattern and to minimize bounce back.
  - + Test spray pattern on cardboard. Hold gun 18 to 30 in. (45.7 to 76.2 cm) from surface. Use this spraying distance for most applications.
  - + When spraying with a nozzle only overlap each stroke 50% in a circular motion.
  - + When spraying with a nozzle and disc overlap each stroke 50% in a linear motion.
- Material flow is controlled with the fluid flow regulator knob and displayed on the gauge. Gun air flow is regulated using air control valve located on the gun handle.

### For Less Material Flow

Try one or a combination of these methods:

- Open air control valve.
- Turn gun flow adjustment nut to decrease flow, counter-clockwise.
- Use smaller nozzle.

### For More Material Flow

Try any one or a combination of these methods:

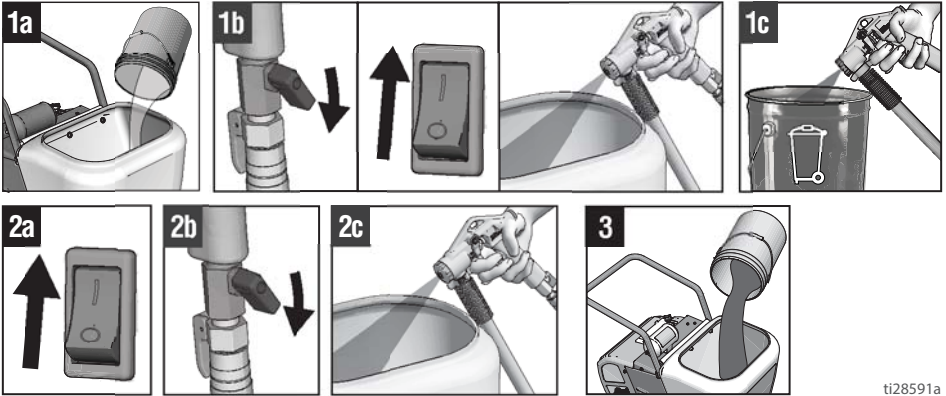
- Close air control valve.
- Turn gun flow adjustment nut clockwise to increase flow.
- Use thinner material mixture.
- Use a larger nozzle.

### Check Material Consistency Periodically

Check and thin material as needed to maintain proper consistency. The material may thicken as it sits and slow down production. Agitate periodically.

## Texture Spraying

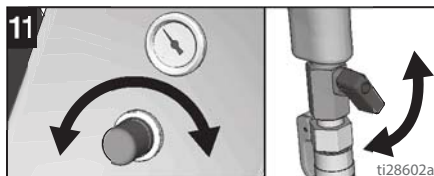
1. Wet inside of hose before each use to flush out sediment and prevent texture material from packing out hose.
  - a. Pour one gallon (3.8 liters) of water into the material hopper.
  - b. Open gun air control valve. Turn ON/OFF switch to **ON** position. Aim gun into hopper and trigger gun to circulate water for a few minutes to wet inside of material hose.
  - c. Trigger gun into waste pail until hopper no longer contains water and all water is removed from hose and pump system.
2. System priming.
  - a. Turn ON/OFF switch to **ON** position.
  - b. Open gun air control valve slightly, allowing a small amount of air to flow with material through gun. This automatically delivers material pressure and flow.
  - c. Aim gun into hopper and trigger the gun.
3. Fill hopper with prepared texture material.



4. Install nozzle or nozzle and disc.
5. Open gun air control valve. Make certain prime valve is closed. To avoid material pack-out in needle, do not allow material to flow out of gun when air control valve is closed for a sustained amount of time.
6. If material gets in needle or gun air passages, flush with water immediately.
7. Inspect 25 ft. material hose for kinks which could restrict fluid flow.
8. Follow mixing material instructions.
9. Trigger gun into a pail. When texture material appears at nozzle, move gun to hopper and circulate until there is a solid stream of texture material.



10. For proper spray pattern and pump and gun adjustments, see **Adjusting the System**, page 2.
11. To achieve uniform spray pattern, adjust air control valve on gun. If you do not achieve the desired pattern, change nozzles, see **Adjusting the System**, page 2.



# MIXING MATERIAL

Correct material mixture is essential for a successful project.

## Drywall Compound

- Mix the material with water in a separate container before pouring it into hopper.
  - **Dry Mix:** Carefully mix material and water according to manufacturer instructions.
  - **Premix:** Follow manufacturers recommendations for mixing.
- Use Material Thickness Gauge to determine if mixture is thin enough to spray. Be sure gauge is completely dry and clean every time it is used.
- The Material Thickness Gauge will only determine if the material is thin enough to pass through the pump. For higher speed spraying, your mixture may need to be thinner.
- Agitate to mix, to a smooth, lump-free consistency.
- Check and thin material periodically. Material may thicken as it sits. Agitate periodically.
- After material is thoroughly mixed, gently set ball end of Material Thickness Gauge on surface of mixture. Best results are obtained when ball sinks completely into the mixture in 6 to 10 seconds. Add more water if the ball does not sink completely into the mixture within 10 seconds and try test again.

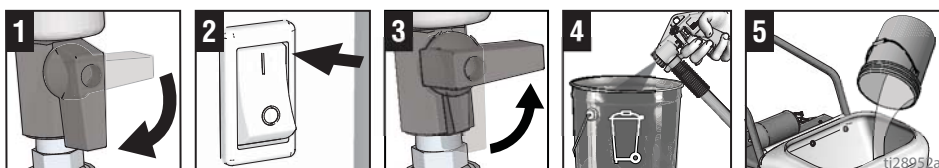
## Other Materials

- If mixing is required, mix in a separate container before pouring it into hopper.
- Follow material manufacturers recommendations for thinning and mixing.
- Thickness gauge is not used with materials containing solids.

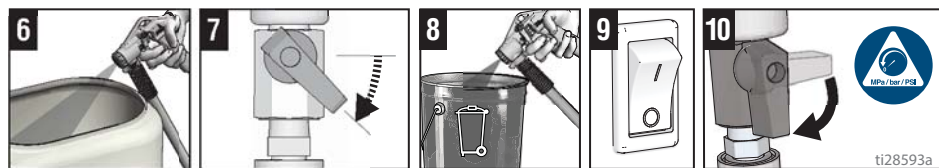
Once material is mixed pour material into the sprayer hopper.

# CLEANUP

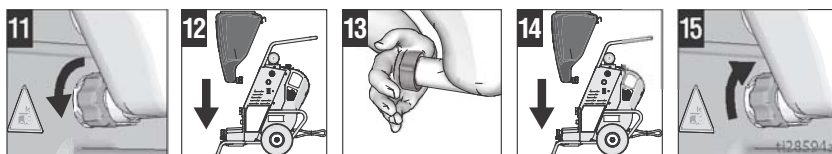
Step 1: Open gun air valve. Step 2: Turn ON/OFF switch to **ON** position. Step 3: Close gun air valve. Step 4: Trigger gun into bucket until most of texture mix is pumped out. Step 5: Fill material hopper with clean water.



Step 6: Spray inside material hopper to circulate water through gun and hose. While circulating water, use gun to clean material hopper. Step 7: Partially open gun air valve to use air to achieve better cleaning. Step 8: Spray water into waste bucket to empty material hopper. Step 9: Turn ON/OFF switch to **OFF** position. Step 10: Open gun air valve and perform **Pressure Relief Procedure**.



Step 11: Loosen bottom fitting on hopper. Step 12: Lift hopper straight up, off the unit. Step 13: Plug opening on bottom of hopper with your hand. Take hopper to cleaning area for cleaning. Step 14: After cleaning hopper, position it on sprayer handle first. Step 15: Hand tighten fitting. Step 16: Always clean nozzles with a soft brush after spraying. Nozzles may require replacement depending on abrasiveness of texture.



## **DO NOT PRINT THIS PAGE -- PRINTING INSTRUCTIONS**

### **Printing Instructions:**

1. Size: 8.5 x 11 folded to 5.5 x 8.5
2. 1.5 mil lam with sealed edge
3. 0.2 inch diameter hole punch in top left corner after folding
4. Stock: 100# Gloss Cvr

Part must be RoHS compliant.