



MAGNUM

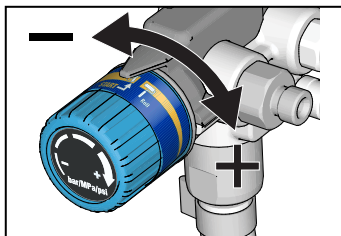
PRO QUICK GUIDE

KNOW YOUR CONTROLS

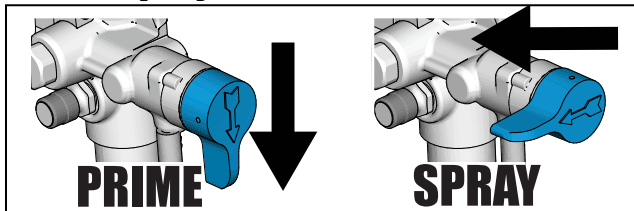
Power



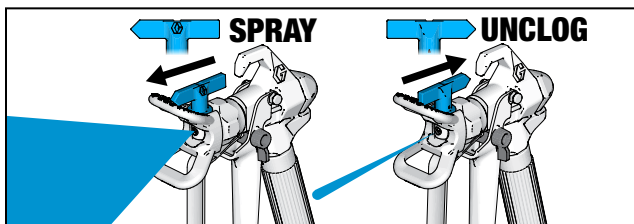
Pressure



Prime/Spray



Spray Tip



Read Owner's Manual for complete instructions and warnings. This quick guide is not a substitute for reading and understanding all instruction manuals and warning labels supplied with the equipment. Manuals are available at magnum.graco.com

WARNING



Follow pressure relief procedure and wear protective equipment including but not limited to protective eye wear.



SKIN INJECTION HAZARD: Keep clear of spray tip and leaks. Engage trigger lock when not spraying.



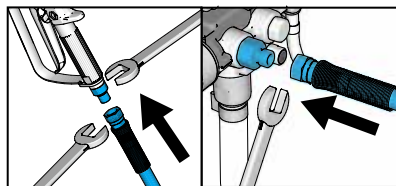
FIRE AND EXPLOSION HAZARD:

Follow fire and explosion warnings as listed in your manual.

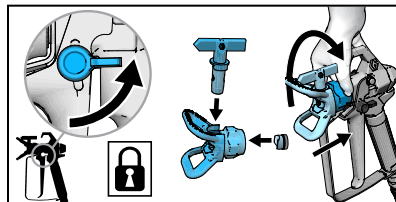


READ AND UNDERSTAND ALL LABELS AND INSTRUCTION MANUALS BEFORE USE. FAILURE TO FOLLOW ALL WARNINGS CAN RESULT IN SERIOUS INJURY, AMPUTATION, OR DEATH.

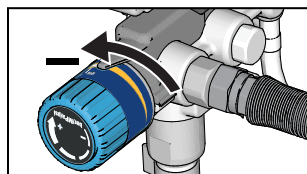
SET UP



1 If needed, connect hose to gun. Remove red cap, then connect hose to sprayer. Tighten securely.



2 Engage Trigger Lock. Assure Spray Tip is properly inserted into the Spray Tip Guard, and the Spray Tip Guard assembly is tightened securely to gun.

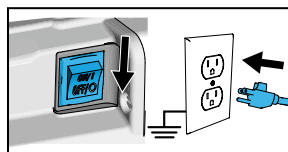


3 Turn the Pressure Control Knob to the lowest setting.



magnum.graco.com/quickassembly

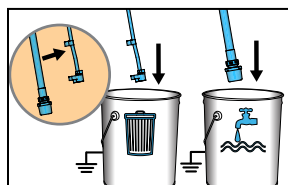
START UP



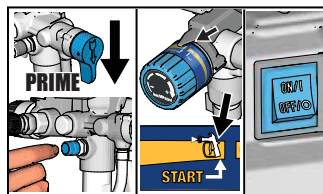
1 Turn Power Switch OFF and plug sprayer into a grounded outlet.



magnum.graco.com/quickstart



2 Separate Drain Tube (smaller) from Suction Tube (larger). Place Drain Tube in a waste pail. Submerge Suction Tube into pail filled with water for water-based material, or mineral spirits if spraying oil-based material.

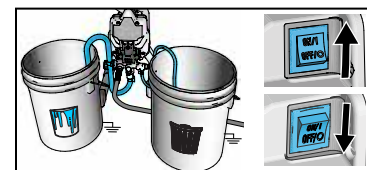


3 Turn the Prime/Spray Valve to the PRIME position. Press the PushPrime™ button twice to loosen inlet valve ball. Turn Pressure Control Knob to **START** position. Turn Power Switch ON.

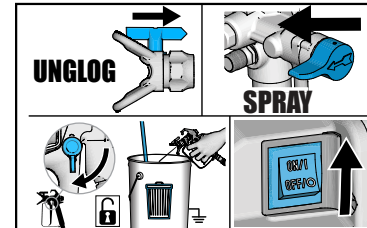


4 Allow fluid to flow up the Suction Tube and out of Drain Tube for 30-60 seconds. Turn Power Switch OFF.

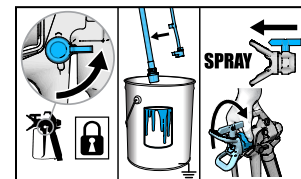
START UP



5 Submerge Suction Tube into paint. Turn Power Switch **ON** and watch for paint to come out of the Drain Tube. Turn Power Switch **OFF**.



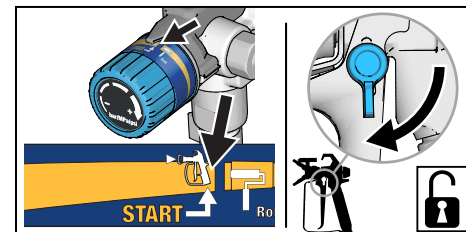
6 Rotate Spray Tip to **UNCLOG** Position. Disengage Trigger Lock. Point gun into waste pail, pull and hold trigger. Turn the Prime/Spray Valve to **SPRAY** position and turn Power Switch **ON**.



7 When paint comes out of gun, release trigger. Engage Trigger Lock. Transfer Drain Tube to paint pail and attach to Suction Tube. Rotate Spray Tip back to **SPRAY** position and ensure Spray Tip Guard is tight.

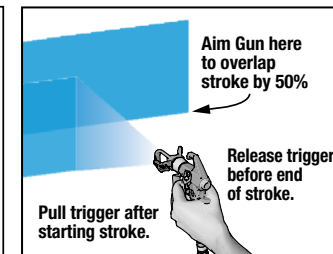
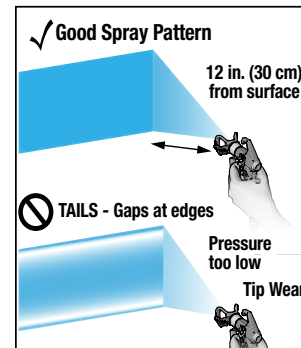
YOU ARE NOW READY TO SPRAY!

SPRAYING



magnum.graco.com/howtospray

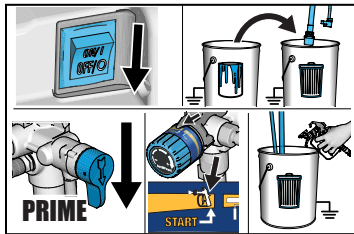
1 Turn Pressure Control Knob to the **START** position. Disengage the Trigger Lock.



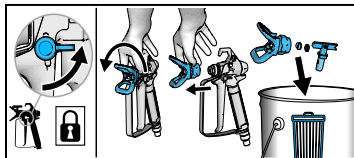
2 Increase Pressure Control Knob if needed until spray is even and without gaps at edges.

CLEANUP

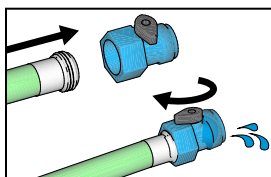
Garden hose cleanup for water-based paints only.
See Owners Manual for pail cleanup or oil-based materials.



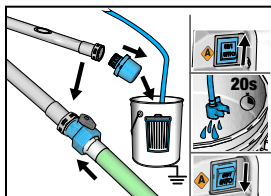
- 1 Turn Power Switch **OFF**. Place Suction and Drain Tubes in waste pail. Turn Prime/Spray Valve to **PRIME**. Turn Pressure Control Knob to **START** position. Trigger gun into a waste pail.



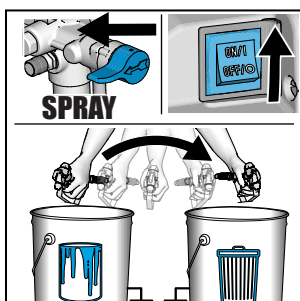
- 2 Engage Trigger Lock. Remove Spray Tip Guard assembly from gun and place in waste pail.



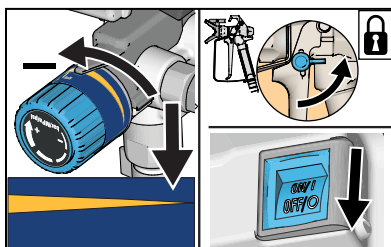
- 3 Screw Power Flush™ Valve (included with sprayer) to a garden hose. Turn on water. Open Power Flush Valve. Rinse paint off Suction and Drain Tubes, inlet screen and Spray Tip and Spray Tip Guard. Close Power Flush Valve.



- 4 Unscrew inlet screen and place in waste pail. Thread Power Flush Valve to Suction Tube. Open Power Flush Valve. Turn Power Switch **ON** and let water run through Drain Tube for 20 seconds. Turn Power Switch **OFF**.



- 5 To save paint in hose, disengage Trigger Lock and trigger gun into paint pail, turn Prime/Spray Valve to **SPRAY** and turn Power Switch **ON**. When water comes out of gun, keep gun triggered and aim into waste pail. Continue to flush until water runs clear.

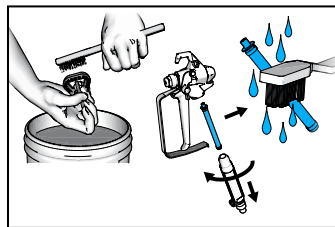


- 6 Turn Pressure Control Knob to lowest setting and release trigger. Engage Trigger Lock. Turn the Prime/Spray Valve to **PRIME** and turn Power Switch **OFF**.

CLEANUP continued



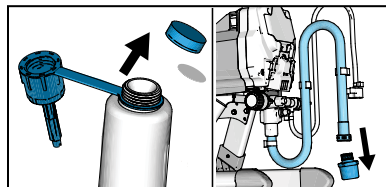
magnum.graco.com/quickcleanup



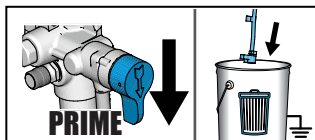
- 7 Clean Spray Tip, Spray Tip Guard and inlet screen with brush. Remove gun filter and clean. Reassemble gun filter, Spray Tip and Spray Tip guard.

STORAGE

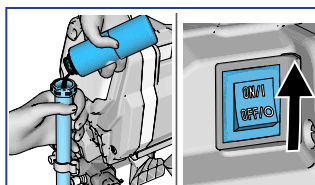
Perform **CLEANUP** before **STORAGE**.
Storage/Priming Tool not available with all models, see Owner's Manual.



- 1 Remove Pump Armor™ bottle cap and foil seal. If needed, unscrew inlet screen from Suction Tube.



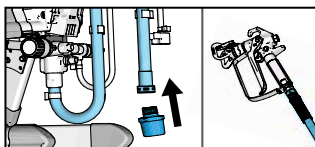
- 2 Turn Prime/Spray Valve to **PRIME**. Place Drain Tube in waste pail. Turn Pressure Control Knob to **START** position.



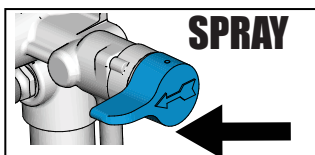
- 3 While holding the Suction Tube above the sprayer, pour approximately 2 ounces (60 ml) of Pump Armor into the Suction Tube and turn Power Switch **ON**.



- 4 When Pump Armor is flushed through the sprayer, turn Power Switch **OFF**. Replace and tighten child-proof cap for storage.



- 5 Screw inlet screen back to Suction Tube. Ensure that spray gun and hose stay attached to sprayer.

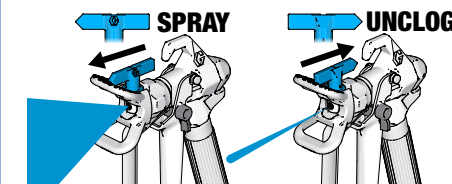


- 6 Turn the Spray/Prime valve to **SPRAY** position for storage. Turn Power Switch **OFF** and unplug sprayer from outlet.

REVERSIBLE SPRAY TIPS

Your sprayer is shipped with a Spray Tip to spray paint. If you are spraying stain see the store associate to purchase a smaller Spray Tip size.

If your sprayer stops spraying, you most likely have a Spray Tip clog. Engage Trigger Lock and reverse the Spray Tip to the **UNCLOG** position. Disengage Trigger Lock and spray into a waste area to remove the clog. Engage Trigger Lock and return the Spray Tip to **SPRAY** position. See Owner's Manual for more information.

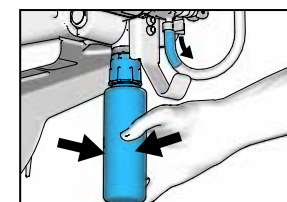


magnum.graco.com/rac

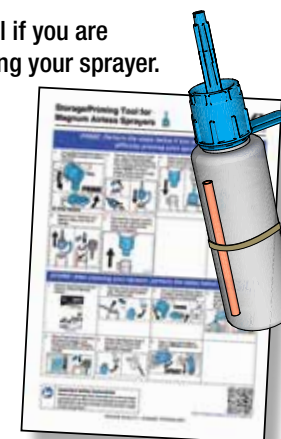
STORAGE/PRIMING TOOL

Not available with all models, see Owner's Manual.

Use the Storage/Priming Tool if you are experiencing difficulty priming your sprayer.



See your Storage/Priming Tool Instruction Guide for information on how to use the Priming/Storage Tool.



QUESTIONS?
888-541-9788
magnum.graco.com/aplus



3A5510 Revision A, January 2018, Original Instructions. This Quick Guide contains English.
Source Manuals: 3A5507, MM 3A5510. Copyright 2018