

Quick Adjust Fan Valve Kit

3A7005A

EN



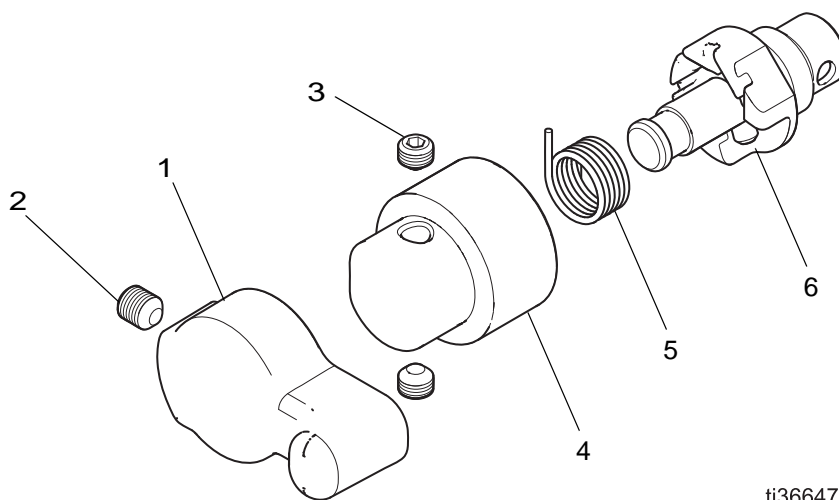
Important Safety Instructions

Read all warnings and instructions in your gun manual. Save all instructions.

Related Manuals

3A2494	Pro Xp™ Electrostatic Air Spray Gun
3A2496	WB100 Isolation System and Pro Xp™ 60 WB Gun
3A4798	Pro Xp™ Auto WBx Waterborne External Charge Electrostatic Air Spray Gun

Kit 25N919, Quick Adjust Fan Valve



Ref	Kit	Description	Qty.
1	24N650	LEVER, (includes item 2)	1
2	GC2081	SCREW, set	1
3	GC2080	SCREW, set	2
4	25P399	KIT, lever adapter (includes item 3)	1
5	25P398	KIT, spring	1
6	25P397	KIT, shaft assembly	1

GRACO INC. AND SUBSIDIARIES • P.O. BOX 1441 • MINNEAPOLIS MN 55440-1441 • USA

Copyright 2019, Graco Inc. All Graco manufacturing locations are registered to ISO 9001.

www.graco.com
Revision A, August 2019

PROVEN QUALITY. LEADING TECHNOLOGY.

Installation

Shaft Assembly Installation

1. Unscrew the existing Fan Air Adjustment Valve from the gun handle as instructed in the related Electrostatic Gun Manual.
2. Install the shaft assembly (6) into the gun handle and slowly tighten to seat the stem in the applicator handle. Torque to 15 in-lbs(1.7 N•m). Make sure the shaft stem can freely rotate 60 degrees on the shaft assembly cutout area.

NOTE: Due to the shaft assembly (6) threads, orientation may vary from the following figures.

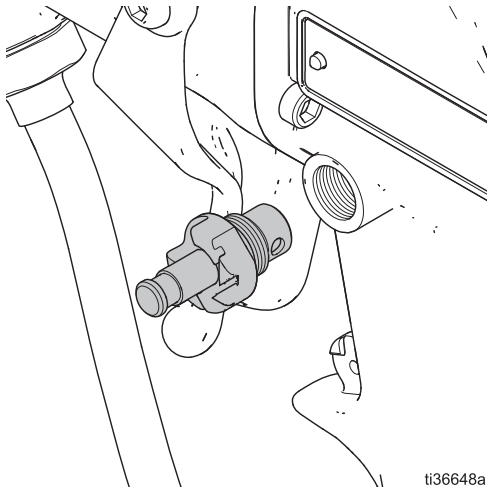


FIG. 1 Shaft Assembly

3. Rotate the shaft stem fully clockwise until the set screw contacts the fully closed stop position as shown in FIG. 2. Keep the shaft stem in this position during the spring tensioning.

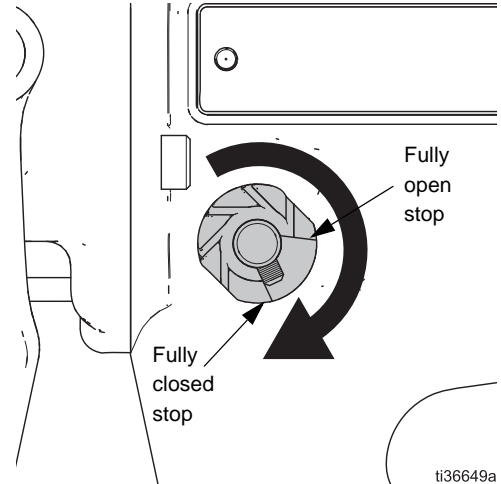


FIG. 2 Shaft Rotated Closed

4. Install the spring (5) over the stem and into one of the slots in the shaft assembly (6). The top arm of the spring should be in a nearly vertical or slightly counter-clockwise position to the handle (see FIG. 3).

If the shaft assembly installed orientation does not allow the vertical spring orientation, the top spring arm may be installed horizontally or offset counter-clockwise from the horizontal position.

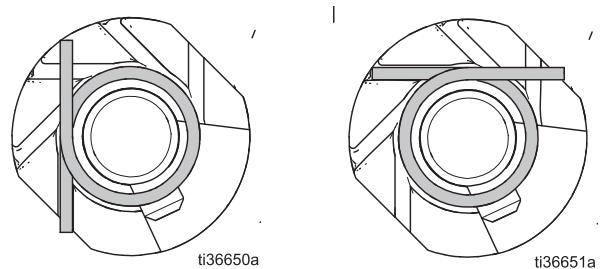


FIG. 3 Spring Position

Installing and Tensioning The Lever Arm

1. Make sure the 2 set screws (3) in the lever adapter (4) are flush and temporarily slide the lever (1) onto the lever adapter (4).

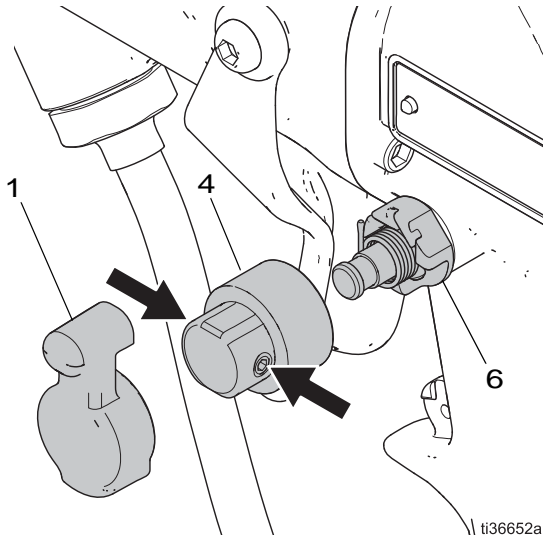


FIG. 4 Set-screw In Flush Position

2. The inside of the lever adapter contains grooves to catch the top arm of the spring (5). With the lever facing upward, align the groove with the spring arm and press it onto the shaft (6) until it bottoms out.

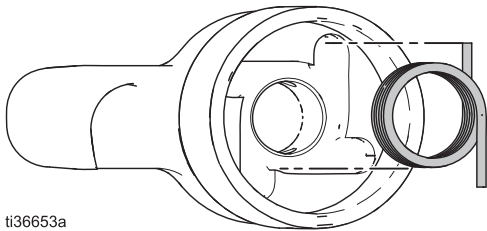


FIG. 5

3. Rotate the lever (1) to the preferred closed position, see FIG. 8. More rotation will increase the spring tension. Rotate at least 90 degrees to ensure the valve will spring open. Do not rotate more than 180 degrees. The tension of the spring (5) will try to rotate the lever back, but do not let the tension relax.
4. Hold the lever adapter (4) firmly in this location and remove the lever arm (1).
5. Tighten the set screws (3) in the lever adapter (4) to the shaft (6). Torque to 7 in-lbs (0.8 N•m).

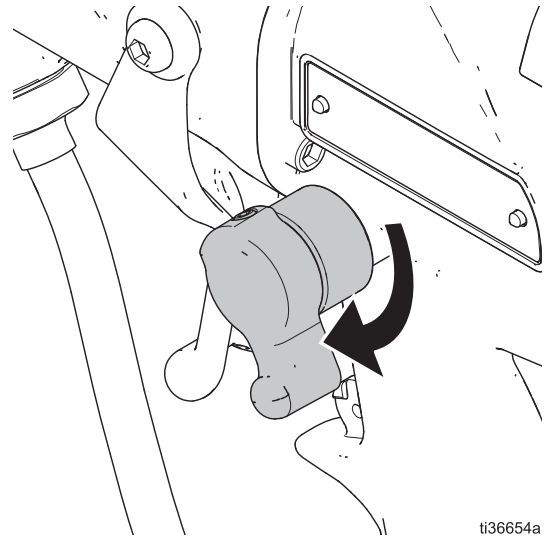


FIG. 6

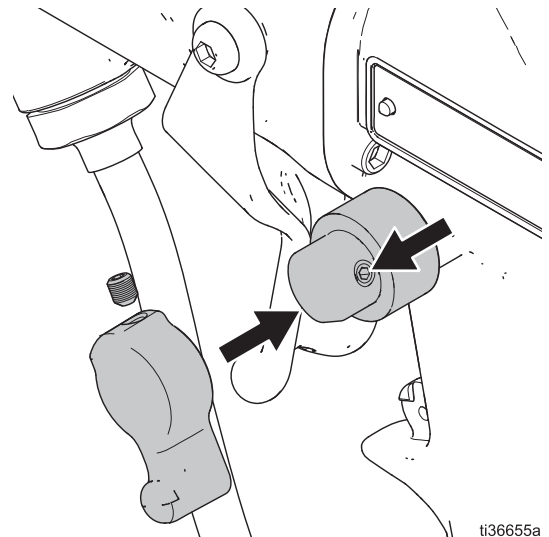


FIG. 7

6. Release the adapter (4) so it springs back to the open position (60 degrees from the closed position). Install the lever (1) onto the adapter (4) and tighten the set screw (2).

NOTE: Adjust the start/stop locations for the lever to a comfortable position by installing the spring in a different slot on the adapter or a different groove on the lever.

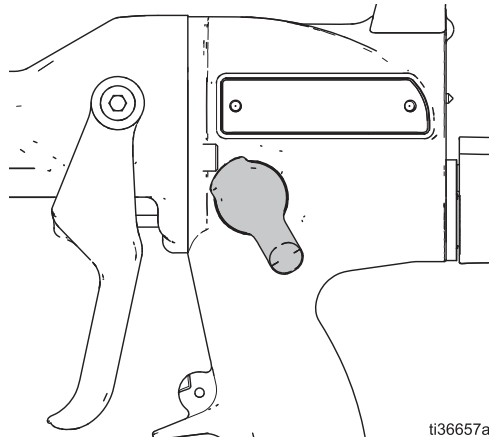


FIG. 8 Closed Position: Fan air is off for a small round pattern.

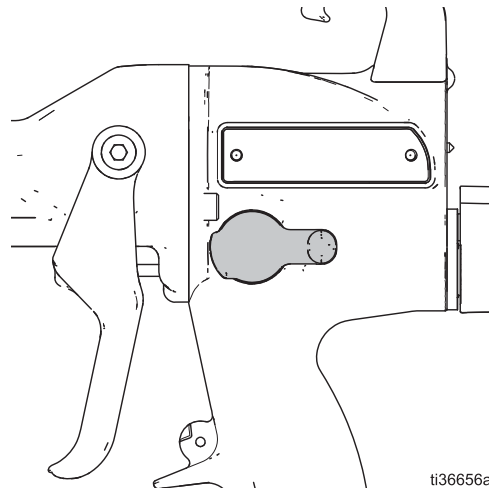


FIG. 9 Open Position: Fan air is on for a long fan pattern.
