



Replacement Kits for
SaniSpray HP™ 20 Airless Handheld Sprayers

3A7932C

EN

Use these instructions when repairing the SaniSpray HP 20 Airless Handheld Sprayers.



Important Safety Instructions

For detailed sprayer information and warnings, see the Owners manual included with your sprayer.

Includes:

Outlet Valve Replacement Kit	25T375
Prime Valve Replacement Kit	25T399, 25T398
Pump Assembly Replacement Kit	19Y962, 19Y967, 25T784
Motor Replacement Kit	19Y963, 25T400, 25T787
SmartControl™ Enclosure Replacement Kit	19Y964, 25T401, 19Y968, 25T785

Pressure Relief Procedure



WARNING

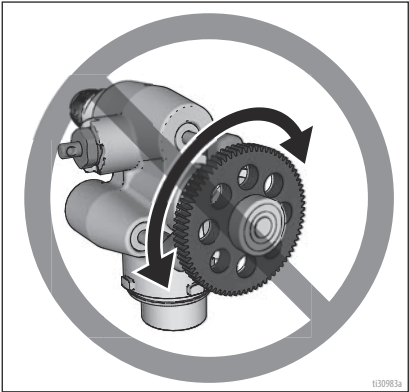
SKIN INJECTION HAZARD: This sprayer builds up an internal pressure of 1000 psi (6.9 MPa, 69 bar) during use. To help prevent serious injury from pressurized fluid, such as skin injection and splashing fluid, follow this **Pressure Relief Procedure** whenever you stop spraying and before cleaning, checking, servicing, or transporting equipment.

ELECTRIC SHOCK HAZARD: AC powered (corded) equipment must be grounded. Improper grounding, setup, or usage of the equipment can cause electric shock. Turn off and disconnect power cord before servicing the equipment.

2. Turn Prime Knob downward to PRIME position to relieve pressure.

NOTICE

Removing the pump locking device or spinning the gear before installation will permanently damage the pump. Do not turn the pump gear before installing the enclosure cover.



1. Disconnect power (remove battery or unplug power cord).

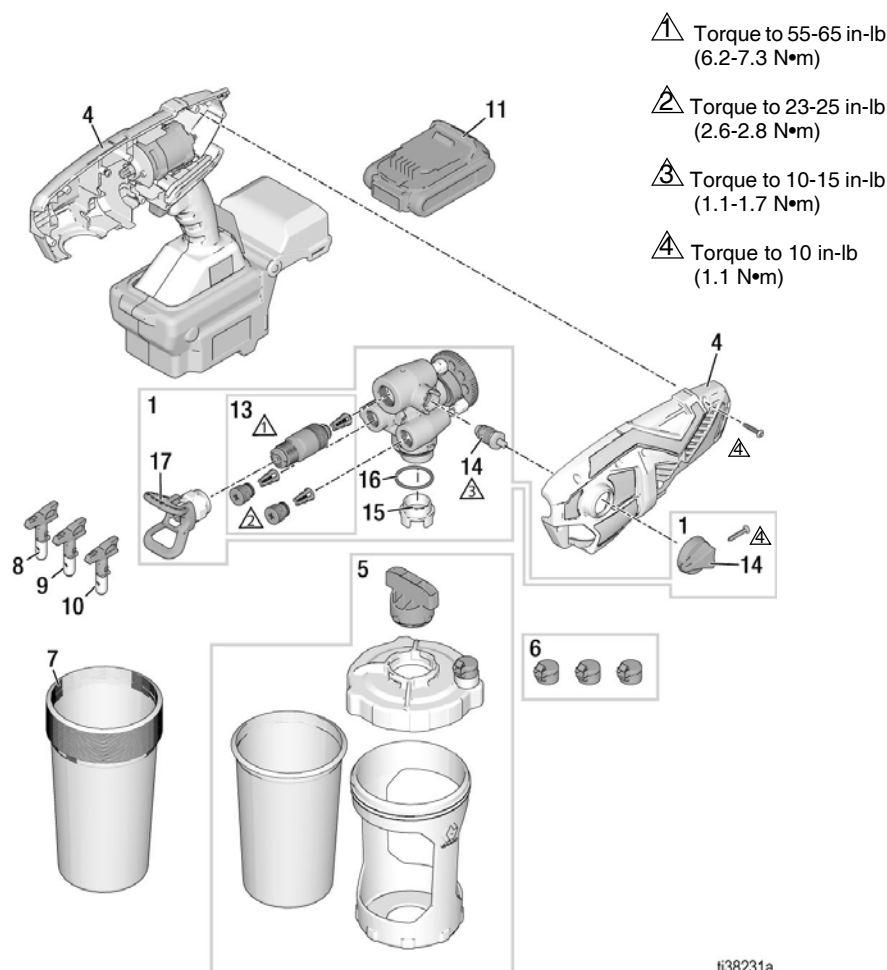
Use only genuine Graco replacement parts.
The use of non-Graco replacement parts may void warranty.



Parts List - HP 20 Corded

Ref.	Sprayer Model	Part	Description	Qty.
1	All	19Y962	KIT, pump, assembly	1
2	25R790, 25R960	19Y963	KIT, motor, AC, 120V	1
	25R943, 25R952	25T400	KIT, motor, AC, 230V	1
3	25R790, 25R960	19Y964	KIT, SmartControl with enclosure, 120V	1
	25R943, 25R952	25T401	KIT, Smartcontrol with enclosure, 230V	1
4	All	17P552	KIT, cup assembly, 42 oz.	1
5	All	17P712	CAP (3-pack)	1
6	All	17P549	FLEXLINER, 42 oz. (25-pack)	1
7	All	LP313	TIP, LP313	1
8	All	LP515	TIP, LP515	1
9	All	FFLP310	TIP, FFLP310	1
10	All	25T375	KIT, valves, HP 20	1
11	All	25T399	KIT, prime valve, corded	1
12	All	17P554	FILTER, pump, 60 mesh (3-pack)	1
13	All	16Y425	O-RING, pump inlet	1
14	All	25R871	GUARD, spray tip, HP 20 (tip not included)	1
15	All	25T282	KIT, extension, 15 inch (not shown)	1
16†	All	25T283	KIT, adapter, extension (not shown)	1
17▲	All	19Y966	KIT, warning labels (not shown)	1
18*	All	25R872	TIPSEAL, polymer (5-pack) (not shown)	1
19▲	All		CARD, medical alert (not shown)	1
		179960	English, Spanish, French	
		17F690	Dutch, German, Italian	
		17A134	English, Chinese, Korean	
		17R476	English, Spanish, Portuguese (Brazil)	
		26A998	English, Chinese, Japanese	
* Two extra TipSeals (polymer spray tip seals) are included with the sprayer. For disinfectant applications, use TipSeal (polymer spray tip seal) instead of the OneSeal (metal seal) that is included with the replacement spray tips.				
† 25T283 Adapter is required to connect 25T282 Extension onto SaniSpray HP 20 Airless Handheld.				
▲ Replacement safety labels, tags, and cards are available at no cost.				

Assembly Drawing, SaniSpray HP 20 Cordless



ti38231a

Parts List - HP 20 Cordless

Ref.	Sprayer Model	Part	Description	Qty.
1	All	19Y967	KIT, pump, assembly	1
4	All	19Y968	KIT, SmartControl with enclosure, 120V	1
5	All	17P552	KIT, cup assembly, 42 oz.	1
6	All	17P712	CAP (3-pack)	1
7	All	17P549	FLEXLINER, 42 oz. (25-pack)	1
8	All	LP313	TIP, LP313	1
9	All	LP515	TIP, LP515	1
10	All	FFLP310	TIP, FFLP310	1
11♦	25R791	17P474	BATTERY, lithium ion compact	1
	25R945, 25R957	17P557		
	25R953	17P558		
	25R961	17P556		
12♦	25R791	17P475	CHARGER, lithium ion (not shown)	1
	25R945, 25R957	17P560		
	25R953	17P561		
	25R961	17P559		
13	All	25T375	KIT, valves, HP 20	1
14	All	25T398	KIT, prime valve, cordless	1
15	All	17P554	FILTER, pump, 60 mesh (3-pack)	1
16	All	16Y425	O-RING, pump inlet	1
17	All	25R871	GUARD, spray tip, HP 20 (tip not included)	
18	All	25T282	KIT, extension, 15 inch (not shown)	1
19†	All	25T283	KIT, adapter, extension (not shown)	1
20▲	All	19Y969	KIT, label, warning, HP 20 DC (not shown)	1
21*	All	25R872	SEALS, polymer (5-pack) (not shown)	1
22▲	All		CARD, medical alert (not shown)	1
		179960	English, Spanish, French	
		17F690	Dutch, German, Italian	
		17A134	English, Chinese, Korean	
		17R476	English, Spanish, Portuguese (Brazil)	
		26A998	English, Chinese, Japanese	
23	All	20A159	KIT, battery enclosure (not shown)	1
♦ Battery and charger are dependent upon in country requirements.				
* Two extra TipSeals (polymer spray tip seals) are included with the sprayer. For disinfectant applications, use TipSeal (polymer spray tip seal) instead of the OneSeal (metal seal) that is included with the replacement spray tips.				
† 25T283 Adapter is required to connect 25T282 Extension onto SaniSpray HP 20 Airless Handheld.				
▲ Replacement safety labels, tags, and cards are available at no cost.				



Parts List - HP 20 Electrostatic

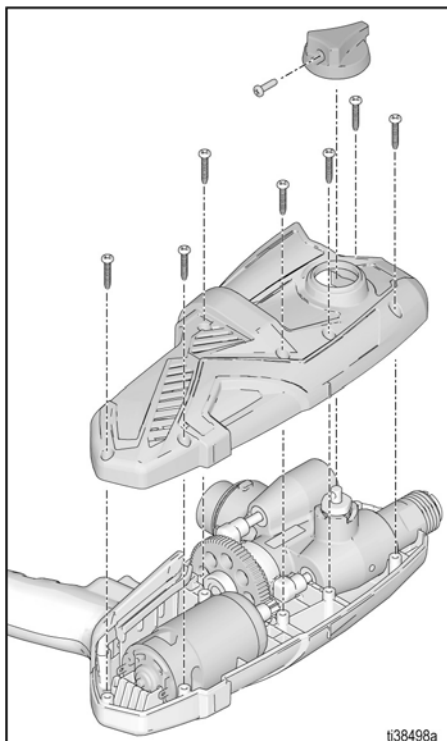
Ref.	Sprayer Model	Part	Description	Qty.
1	All	25T784	KIT, pump, assembly	1
4	All	25T785	KIT, SmartControl with enclosure	1
5	All	17P552	KIT, cup assembly, 42 oz.	1
6	All	17P712	CAP (3-pack)	1
7	All	17P549	FLEXLINER, 42 oz. (25-pack)	1
8	All	LP313	TIP, LP313	1
9	All	LP515	TIP, LP515	1
10	All	FFLP310	TIP, FFLP310	1
11◆	25T589	17P474	BATTERY, lithium ion compact	1
	25T756, 25T758	17P557		
	25T757	17P558		
	25T760	17Y586		
	25T759	17P556		
12◆	25T589	17P475	CHARGER, lithium ion (not shown)	1
	25T756, 25T758	17P560		
	25T757	17P561		
	25T760	17Y587		
	25T759	17P559		
13	All	25T375	KIT, valves, HP 20	1
14	All	25T398	KIT, prime valve, cordless	1
15	All	17P554	FILTER, pump, 60 mesh (3-pack)	1
16	All	16Y425	O-RING, pump inlet	1
17	All	25R871	GUARD, spray tip, HP 20 (tip not included)	
18	All	25T787	MOTOR, DC	1
20▲	All	25T786	KIT, label, warning, HP 20 ES (not shown)	1
21*	All	25R872	SEALS, polymer (5-pack) (not shown)	1
22▲	All		CARD, medical alert (not shown)	1
		179960	English, Spanish, French	
		17F690	Dutch, German, Italian	
		17A134	English, Chinese, Korean	
		17R476	English, Spanish, Portuguese (Brazil)	
		26A998	English, Chinese, Japanese	
23		20A381	STRAP, wrist grounding (not shown)	1
24		20A453	STRAP, boot grounding (not shown)	1
◆ Battery and charger are dependent upon in country requirements.				
* Two extra TipSeals (polymer spray tip seals) are included with the sprayer. For disinfectant applications, use TipSeal (polymer spray tip seal) instead of the OneSeal (metal seal) that is included with the replacement spray tips.				
▲ Replacement safety labels, tags, and cards are available at no cost.				

Enclosure Cover Removal/Installation

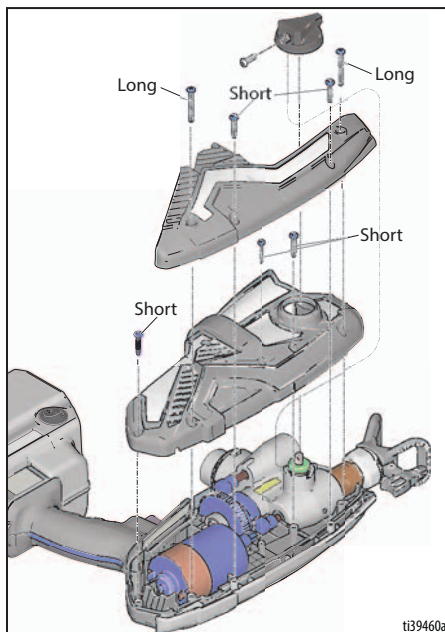
Removal

Before servicing the sprayer, the enclosure cover must be removed by following these steps:

1. Perform **Pressure Relief Procedure**, page 1.
2. Verify the power has been disconnected before proceeding.
3. Remove cup assembly.
4. Turn Prime Knob forward to spray position
5. Remove cross-head screw from Prime Knob and remove knob.
6. **Corded and Cordless Models:** Remove seven cross-head screws from sprayer enclosure and remove enclosure cover.



Electrostatic Models: Remove nine cross-head screws from sprayer enclosure and remove enclosure cover.



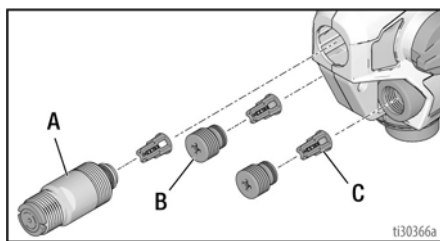
Installation

1. Place enclosure cover on the sprayer. Secure with seven (Corded & Cordless models) or nine (Electrostatic model) cross-head screws. See Assembly Drawing for torque.
2. Rotate prime valve stem so the valve stem pocket is pointed towards the rear of the sprayer.
3. Install Prime Knob so the knob is pointing towards the front of the sprayer. Install cross-head screw. See Assembly Drawing for torque.
4. Knob will only rotate forward and down.
5. After assembly is complete, perform **Assembly Verification**, page 13.

Outlet Valve Replacement

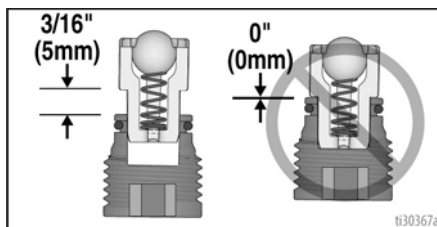
Worn outlet valves are easily replaced without removing the enclosure cover.

1. Perform **Pressure Relief Procedure**, page 1.
2. Verify the power has been disconnected before proceeding.
3. To remove the three outlet valves (c), remove two pump plugs (b) and front valve (a). Use 8mm (5/16") Allen wrench to remove pump plugs. Use an adjustable wrench to remove the front valve.



4. Confirm that the o-rings are on the new pump plugs and front valve.

5. Assemble new outlet valves, as shown. Leave a space between the end of the plug or front valve and shoulder on the outlet valve assemblies.

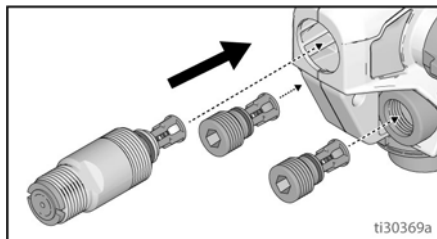


NOTE: Check ball should move freely against the spring in the retainer.

NOTICE

Do not push outlet valves all the way into the valve plugs or front valve. If outlet valves are pushed all the way into the valve plugs or front valve the sprayer will spray with reduced performance.

6. Install two pump plugs and front valve. Torque front valve and pump plugs, see Assembly Drawing for torques.



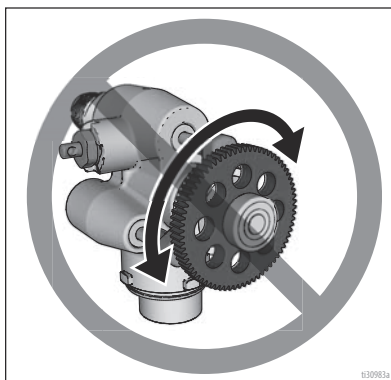
Prime Valve and Knob Replacement

Replacement of the Prime Valve or the Prime Knob can be accomplished without removing the enclosure cover.

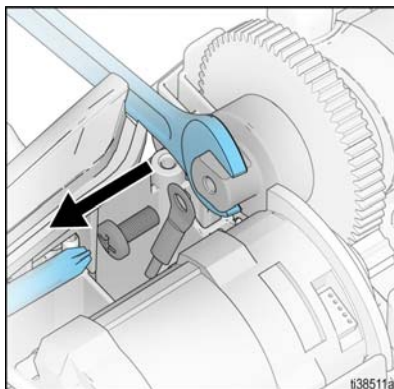
1. Perform **Pressure Relief Procedure**, page 1.
2. Verify the power has been disconnected before proceeding.
3. Remove cross-head screw from Prime Knob.
4. Using a 5/8 in. (16mm) deep socket, remove Prime Valve from pump assembly. Make certain o-ring is removed with the Prime Valve.
5. Thread new Prime Valve into pump assembly. See Assembly Drawing for torque.
6. Rotate Prime Valve stem so the stem pocket is pointed towards the rear of the sprayer.
7. Install Prime Knob so the knob is pointing towards the front of the sprayer. Install cross-head screw. See Assembly Drawing for torque.
8. Knob will only rotate forward and down. See assembly drawings for torques.
9. After assembly is complete, perform **Assembly Verification**, page 13.

Pump Assembly Replacement

Removal and replacement of the pump assembly can be accomplished without removing the motor.



1. Perform **Pressure Relief Procedure**, page 1.
2. Verify the power has been disconnected before proceeding.
3. To replace the pump assembly you must first remove the enclosure cover. See **Enclosure Cover Removal/Installation**, page 8.
4. Remove pump assembly from SmartControl Enclosure.
5. On the HP 20 Cordless model, use a wrench to hold the pump bearing. Remove the screw that retains the static dissipation wire. Save the screw.

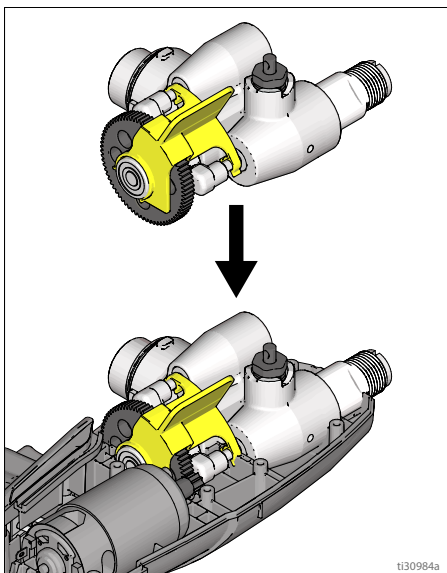


6. Locate new pump assembly. Do not remove the yellow pump locking device until the new pump is installed in the SmartControl Enclosure housing.

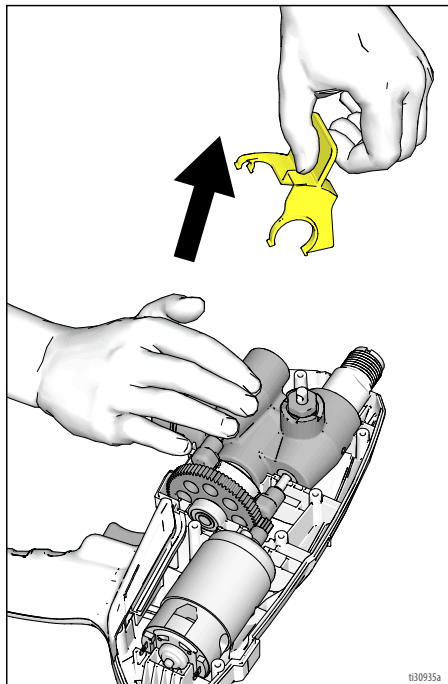
NOTICE

Removing the pump locking device and or spinning the gear before installation will permanently damage the pump.

9. Push the pump assembly down into the SmartControl Enclosure. The pump locking device will partially snap away from the pump assembly. To complete removal of the pump locking device, hold the pump assembly in place while pulling on the pump locking device tab.



7. On the HP 20 Cordless model, use a wrench to hold the pump bearing. Install the static dissipation wire screw. Torque screw to 19-21 in-lb (2.1-2.4 N•m).
8. Place pump assembly into SmartControl Enclosure, while making sure the bearing is in the enclosure boss and the gear meshes with the motor gear.



10. Install enclosure cover. See **Enclosure Cover Removal/Installation**, page 8.

NOTE: Make sure wires are not pinched when enclosure halves are put together.

Motor Replacement

To replace the motor you must first remove the enclosure cover.

NOTICE

Do not turn or spin the pump gear, permanent damage to the pump will occur.

1. Perform **Pressure Relief Procedure**, page 1.
2. Verify the power has been disconnected before proceeding.
3. Remove the enclosure cover. See **Enclosure Cover Removal/Installation**, page 8.

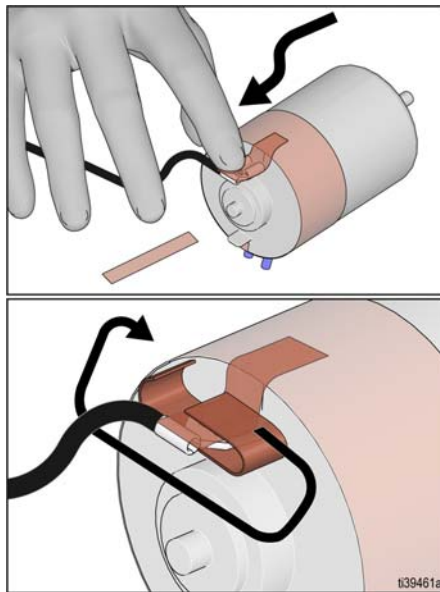
HP 20 Cordless

For the HP 20 Cordless model, the SmartControl Enclosure Replacement Kit includes the motor pre-wired and installed in the enclosure. See **SmartControl Enclosure Replacement**, page 13.

HP 20 Corded & HP 20 Electrostatic

1. Remove the motor.
2. Place new motor into enclosure, aligning the motor screw at the gear end with the enclosure slot. When properly installed, motor gear should mesh with pump gear.
3. **Corded Models:** Verify the green wire from power cord is plugged into male ground spade on motor. Make sure terminal is pushed all the way onto the ground spade.

4. Plug red and white wires from SmartControl assembly onto male spades on motor.
 - Make sure red wire is plugged into male spade with red dot on end of motor.
 - Make sure female connector on white/black wire is plugged into male spade on end of motor.
 - **Electrostatic Models:** Press the exposed copper foil onto the top side of the female connector of the black wire. Then remove the backing from the loosely sent copper foil. Wrap this foil around the same female connector to secure the copper foil underneath. **This step is critical for electrostatic operation.**



5. Install enclosure cover. See **Enclosure Cover Removal/Installation**, page 8.

NOTE: Make sure motor wires are not pinched when enclosure is assembled.

SmartControl Enclosure Replacement

The SmartControl assembly is included within the SmartControl Enclosure. To replace the SmartControl Enclosure, you must first remove the enclosure cover.

1. Perform **Pressure Relief Procedure**, page 1.
2. Verify the power has been disconnected before proceeding.
3. Remove enclosure cover. See **Enclosure Cover Removal/Installation**, page 8.

NOTICE

Do not turn or spin the pump gear, permanent damage to the pump will occur.

4. Remove pump assembly from SmartControl Enclosure. See **Pump Assembly Replacement**, page 10.
5. For the HP 20 Corded and Electrostatic models, the motor is not included in the SmartControl Enclosure Replacement kit. To install a motor into the new SmartControl Enclosure, see **Motor Replacement**, page 12.
6. Place pump assembly into new SmartControl Enclosure while making sure the bearing is in the enclosure boss and the gear meshes with the motor gear.
7. Make certain the pump assembly is in place in the SmartControl Enclosure.
8. Install enclosure cover. See **Enclosure Cover Removal/Installation**, page 8.

NOTE: Make sure wires are not pinched when enclosure halves are put together.

Assembly Verification

After assembly is complete, perform the following steps to verify proper operation. If sprayer fails one of the steps, repeat sprayer repair procedures.

- Rotate Prime Knob to make sure it rotates forward to the spray position and down to the prime pump position.
- Fill cup assembly with water and verify sprayer primes and sprays. Follow **Start Up** and **How to Spray** sections in the sprayer's operation manual for proper priming and spraying procedures.

[illegible]

Graco Information

For the latest information about Graco products, visit www.graco.com.

For patent information, see www.graco.com/patents.

TO PLACE AN ORDER, contact your Graco distributor or call 1-800-690-2894 to identify the nearest distributor.



All written and visual data contained in this document reflects the latest product information available at the time of publication. Graco reserves the right to make changes at any time without notice.

Original instructions. This manual contains English. MM 3A7932

Graco Headquarters: Minneapolis

International Offices: Belgium, China, Japan, Korea

GRACO INC. AND SUBSIDIARIES • P.O. BOX 1441 • MINNEAPOLIS MN 55440-1441 • USA

Copyright 2020, Graco Inc. All Graco manufacturing locations are registered to ISO 9001.

www.graco.com

Revision C, June 2021