

# PSM15

## 1K Precision Metering System

3B0107B

EN

***For accurate metering and dispensing of single-component materials. For professional use only.***

**Not approved for use in explosive atmospheres or hazardous (classified) locations.**

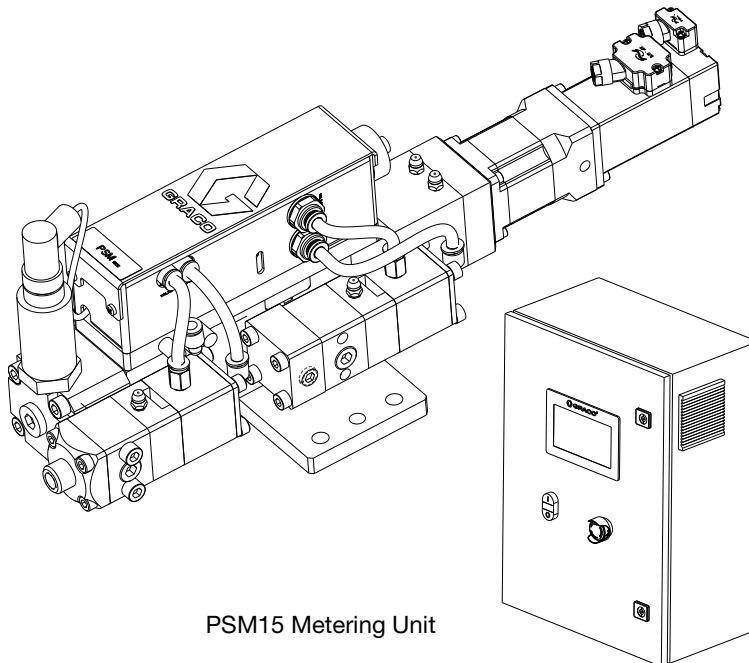
*100 psi (0.7 MPa, 7 bar) Maximum Air Inlet Pressure.*

*See page 3 for model information, including maximum working pressure and approvals.*



### Important Safety Instructions

Read all warnings and instructions in this manual and in your dispensing valve manual before using the equipment. Save these instructions.



PSM15 Metering Unit

PSM15 Control Unit

# Contents

**Related Manuals . . . . . 2**

**Models . . . . . 3**

**Safety Symbols . . . . . 4**

**General Warnings . . . . . 5**

    Changing Materials . . . . . 7

**Recycling and Disposal . . . . . 8**

    End of Product Life . . . . . 8

**Repair . . . . . 9**

    Prepare Machine for Piston/Cylinder Replacement  
        Kit Installation . . . . . 9

    Disassemble Cylinder . . . . . 10

    Install Cylinder . . . . . 10

    Prepare Machine for Operation . . . . . 11

**Parts . . . . . 12**

    Overview . . . . . 12

    System, 2006051 and 2006052 . . . . . 13

    Metering Unit, 2005930 and 2005931 . . . . . 14

    Metering Base, CU6371 and CU6635 . . . . . 16

    Junction Box Module . . . . . 20

    Inlet Valve, CU6602 and CU6595 . . . . . 22

    Dispense Valve, 2005892 and 2005893 . . . . . 22

    Control Unit, 2002837 . . . . . 24

**Kits and Accessories . . . . . 26**

    Communication Module Kits . . . . . 26

    Metering Unit Kits . . . . . 26

    Module Kits . . . . . 26

**Technical Specifications . . . . . 27**

**California Proposition 65 . . . . . 27**

**Graco Standard Warranty . . . . . 28**

# Related Manuals

Manuals in English	Description
3B0106	PSM15 Instruction Manual

# Models

Part	Maximum Working Pressure psi (MPa, bar)	Description	Communication Mode <sup>(3)</sup>		
			IO	Profinet	Ethernet IP
2006051	1200 psi (8.3 MPa, 83 bar)	PSM15 System, Supply Pump Feed, SST <sup>(1)</sup> , 15 cc, I/O	✓		
2006052		PSM15 System, Supply Pump Feed, CER <sup>(2)</sup> , 15 cc, I/O	✓		
2006931		PSM15 System, Supply Pump Feed, SST <sup>(1)</sup> , 15 cc, Profinet		✓	
2006932		PSM15 System, Supply Pump Feed, CER <sup>(2)</sup> , 15 cc, Profinet		✓	
2006933		PSM15 System, Supply Pump Feed, SST <sup>(1)</sup> , 15 cc, Ethernet IP			✓
2006934		PSM15 System, Supply Pump Feed, CER <sup>(2)</sup> , 15 cc, Ethernet IP			✓
2002837	---	Control Unit	✓		

<sup>(1)</sup> SST: Stainless steel material



<sup>(2)</sup> CER: Ceramic material









<sup>(3)</sup> The module is installed in the control box.

**NOTE:** PSM15,I/O system can be converted to Profinet or Ethernet IP communication mode. Order kit 2005273 for Profinet communication mode or kit 2000362 for Ethernet IP communication mode. See **Communication Module Kits**, page 26.

# Safety Symbols

The following safety symbols appear throughout this manual and on warning labels. Read the table below to understand what each symbol means.

Symbol	Meaning
	Electric Shock Hazard
	Equipment Misuse Hazard
	Fire and Explosion Hazard
	Moving Parts Hazard
	Pressurized Equipment Hazard
	Skin Injection Hazard
	Skin Injection Hazard
	Splash Hazard
	Toxic Fluid or Fumes Hazard

Symbol	Meaning
	Do Not Place Hands or Other Body Parts Near Fluid Outlet
	Do Not Stop Leaks with Hand, Body, Glove or Rag
	Eliminate Ignition Sources
	Follow Pressure Relief Procedure
	Ground Equipment
	Read Manual
	Ventilate Work Area
	Wear Personal Protective Equipment











## Safety Alert Symbol

This symbol indicates: Attention! Become Alert! Look for this symbol throughout the manual to indicate important safety messages.

# General Warnings

The following warnings apply throughout this manual. Read, understand, and follow the warnings before using this equipment. Failure to follow these warnings can result in serious injury.

 <b>WARNING</b>	
 	<b>ELECTRIC SHOCK HAZARD</b> This equipment must be grounded. Improper grounding, setup, or usage of the system can cause electric shock. <ul style="list-style-type: none"> <li>• Turn off and disconnect power at main switch before disconnecting any cables and before servicing or installing equipment.</li> <li>• Connect only to grounded power source.</li> <li>• All electrical wiring must be done by a qualified electrician and comply with all local codes and regulations.</li> </ul>
    	<b>SKIN INJECTION HAZARD</b> High-pressure fluid from dispensing device, hose leaks, or ruptured components will pierce skin. This may look like just a cut, but it is a serious injury that can result in amputation. <b>Get immediate surgical treatment.</b> <ul style="list-style-type: none"> <li>• Do not point dispensing device at anyone or at any part of the body.</li> <li>• Do not put your hand over the fluid outlet.</li> <li>• Do not stop or deflect leaks with your hand, body, glove, or rag.</li> <li>• Follow the <b>Pressure Relief Procedure</b> when you stop dispensing and before cleaning, checking, or servicing equipment.</li> <li>• Tighten all fluid connections before operating the equipment.</li> <li>• Check hoses and couplings daily. Replace worn or damaged parts immediately.</li> </ul>

# **WARNING**



## **FIRE AND EXPLOSION HAZARD**

Flammable fumes, such as solvent and paint fumes, in **work area** can ignite or explode. Paint or solvent flowing through the equipment can cause static sparking. To help prevent fire and explosion:



- Use equipment only in well-ventilated area.
- Eliminate all ignition sources; such as pilot lights, cigarettes, portable electric lamps, and plastic drop cloths (potential static sparking).
- Ground all equipment in the work area. See **Grounding** instructions.
- Never spray or flush solvent at high pressure.
- Keep work area free of debris, including solvent, rags and gasoline.
- Do not plug or unplug power cords, or turn power or light switches on or off when flammable fumes are present.
- Use only grounded hoses.
- Hold gun firmly to side of grounded pail when triggering into pail. Do not use pail liners unless they are anti-static or conductive.
- **Stop operation immediately** if static sparking occurs or you feel a shock. Do not use equipment until you identify and correct the problem.
- Keep a working fire extinguisher in the work area.



## **EQUIPMENT MISUSE HAZARD**

Misuse can cause death or serious injury.



- Do not operate the unit when fatigued or under the influence of drugs or alcohol.
- Do not exceed the maximum working pressure or temperature rating of the lowest rated system component. See **Technical Specifications** in all equipment manuals.
- Use fluids and solvents that are compatible with equipment wetted parts. See **Technical Specifications** in all equipment manuals. Read fluid and solvent manufacturer's warnings. For complete information about your material, request Safety Data Sheets (SDSs) from distributor or retailer.
- Turn off all equipment and follow the **Pressure Relief Procedure** when equipment is not in use.
- Check equipment daily. Repair or replace worn or damaged parts immediately with genuine manufacturer's replacement parts only.
- Do not alter or modify equipment. Alterations or modifications may void agency approvals and create safety hazards.
- Make sure all equipment is rated and approved for the environment in which you are using it.
- Use equipment only for its intended purpose. Call your distributor for information.
- Route hoses and cables away from traffic areas, sharp edges, moving parts, and hot surfaces.
- Do not kink or over bend hoses or use hoses to pull equipment.
- Keep children and animals away from work area.
- Comply with all applicable safety regulations.



## **MOVING PARTS HAZARD**

Moving parts can pinch, cut or amputate fingers and other body parts.



- Keep clear of moving parts.
- Do not operate equipment with protective guards or covers removed.
- Equipment can start without warning. Before checking, moving, or servicing equipment, follow the **Pressure Relief Procedure** and disconnect all power sources.

# **WARNING**



## **TOXIC FLUID OR FUMES HAZARD**

Toxic fluids or fumes can cause serious injury or death if splashed in the eyes or on skin, inhaled, or swallowed.

- Read Safety Data Sheets (SDSs) to know the specific hazards of the fluids you are using.
- Store hazardous fluid in approved containers, and dispose of it according to applicable guidelines.



## **PERSONAL PROTECTIVE EQUIPMENT**

Wear appropriate protective equipment when in the work area to help prevent serious injury, including eye injury, hearing loss, inhalation of toxic fumes, and burns. Protective equipment includes but is not limited to:

- Protective eyewear, and hearing protection.
- Respirators, protective clothing, and gloves as recommended by the fluid and solvent manufacturer.

## **Changing Materials**

### **NOTICE**


Changing the material types used in your equipment requires special attention to avoid equipment damage and downtime.

- When changing materials, flush the equipment multiple times to ensure it is thoroughly clean.
- Always clean the fluid inlet strainers after flushing.
- Check with your material manufacturer for chemical compatibility.
- When changing between epoxies and urethanes or polyureas, disassemble and clean all fluid components and change hoses. Epoxies often have amines on the B (hardener) side. Polyureas often have amines on the B (resin) side.

# Recycling and Disposal

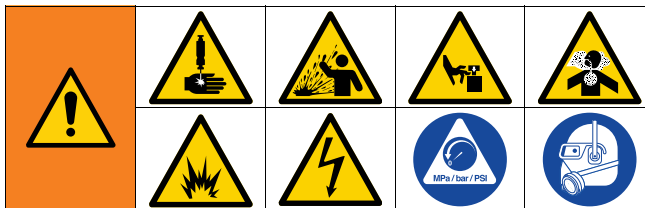
## End of Product Life

At the end of the product's useful life, dismantle and recycle it in a responsible manner.

- Follow the **Pressure Relief Procedure** in your PSM15 Instruction Manual. See **Related Manuals**, page 2.
- Drain and dispose of fluids according to applicable regulations. Refer to the material manufacturer's Safety Data Sheet.
- Remove motors, circuit boards, LCDs (liquid crystal displays), and other electronic components. Recycle according to applicable regulations.
- Do not dispose of electronic components with household or commercial waste. 
- Deliver remaining product to a recycling facility.



# Repair



This equipment stays pressurized until pressure is manually relieved. To help prevent serious injury from pressurized fluid, such as skin injection, splashing fluid and moving parts, follow **Pressure Relief Procedure** when you stop operating and before cleaning, checking, or servicing the equipment.

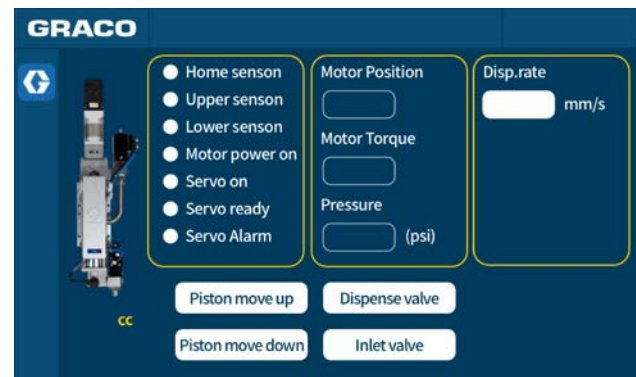
Wear appropriate protective equipment to help prevent serious injury from toxic fluids or fumes.

To avoid injury from fire, explosion, or electric shock, all electrical wiring must be done by a qualified electrician and comply with all local codes and regulations.

## Prepare Machine for Piston/Cylinder Replacement Kit Installation

**NOTE:** Graco suggests using TSL™ only in repair procedures. All procedures should be performed by an appropriate professional.

1. Follow steps 1 through 3 of the **Pressure Relief Procedure** in your PSM Instruction Manual. See **Related Manuals**, page 2.
2. Turn off the air supply when the fluid pressure drops to ZERO.
3. Go to the Advanced Screen 1 of the PSM15 Control Unit (F, page 7 in your PSM15 Instruction Manual). Set the move speed at about 0.2 cc/s, then jog select “Piston move down” until the lower switch light is activated.

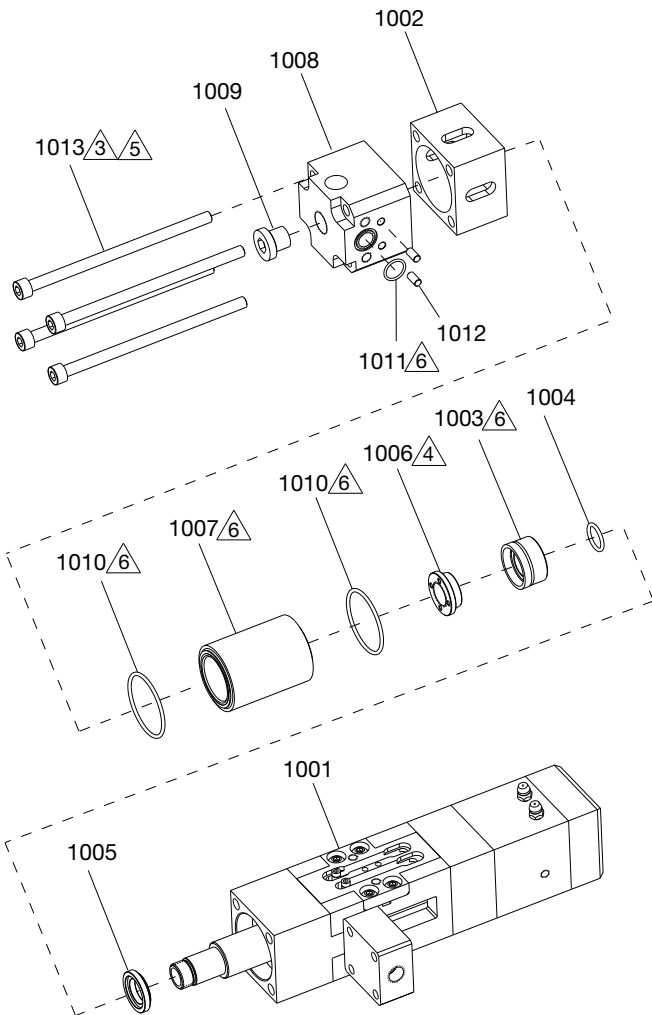


**FIG. 1 Advanced Screen 1**

**NOTE:** To open the Advanced mode, the operator must enter the password **1492**.

4. Turn off the system power.
5. Disconnect all cables and tubes from Junction Box Assembly (AA, page 8 in your PSM15 Instruction Manual).
6. Open the top cover of the Junction Box (AA, page 8 in your PSM15 Instruction Manual) and loosen the four fix screws in the cylinder housing (112). Next, take off the Junction Box Assembly (AA, page 8 in your PSM15 Instruction Manual).

## Disassemble Cylinder



**FIG. 2 Disassemble Cylinder of 15 cc**

1. Follow **Prepare Machine for Piston/Cylinder Replacement Kit Installation**, page 9.
2. Remove the four screws (1013).
3. Remove the plug (1009), O-ring (1011) and pin (1012) from the cover (1008) and the sleeve (1002).
4. Remove the cylinder (1007) and O-rings (1010) from the base (1001).
5. Remove the support plate (1006) from the base (1001).
6. Remove the piston (1003) from the base (1001).
7. Remove the O-ring (1004) from the base (1001).

8. Remove the back support (1005) from the base (1001).

9. Clean all parts that have been removed.

## Install Cylinder

1. Install the new back support (1005) to the base (1001) with TSL oil.
2. Install the new O-ring (1004) with TSL oil.
3. Install the new piston (1003) in the correct direction.
4. Install the support plate (1006) and tighten the support plate with correct torque.
5. Install the new O-ring (1010) into the grooves of the base (1001) with TSL oil.
6. Carefully slide the end of the cylinder (1007) into the base (1001) in the correct direction. Ensure the cylinder doesn't damage the sides of the piston as the cylinder is inserted.
7. Insert the lubricated O-rings (1010) into the grooves of the cylinder (1007).
8. Install the sleeve (1002) and the cover (1008).
9. Diagonally tighten the screws by slowly and progressively increasing torque until the screws are securely housed.
10. Install other parts.

**NOTE:** Not all parts need to be replaced with new ones. The operator may replace the parts per actual situation.

## Prepare Machine for Operation

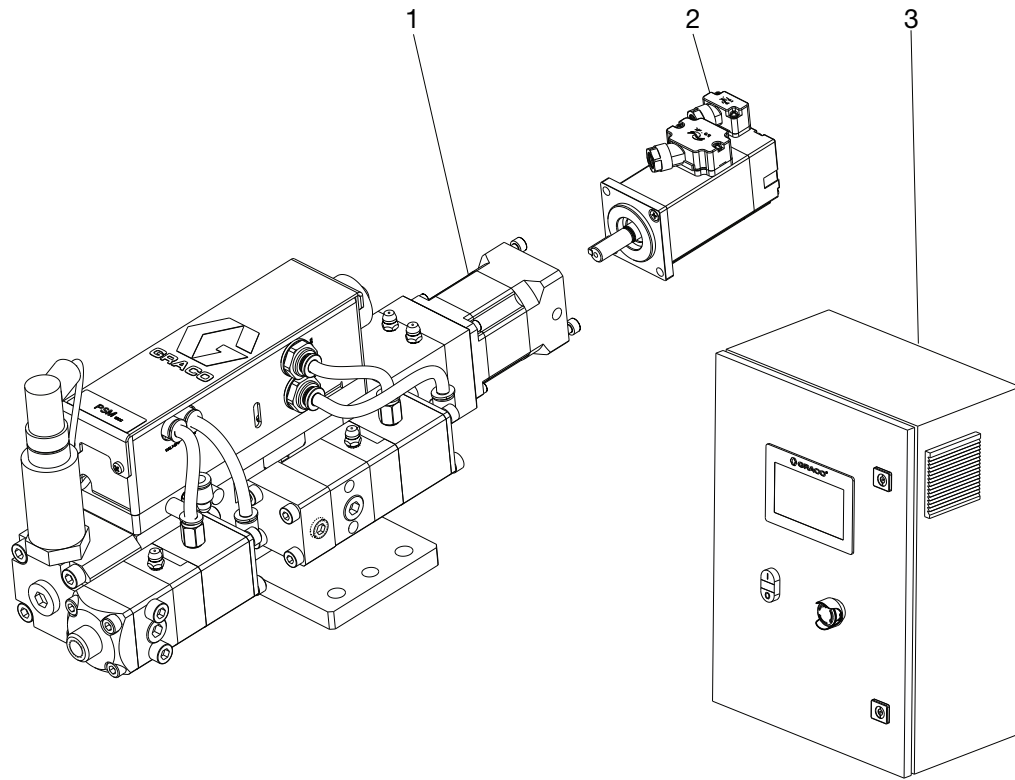
1. Pressurize Supply Pump System (E, page 7 in your PSM15 Instruction Manual) connected to the Inlet Valve (AD, page 8 in your PSM15 Instruction Manual). See **Related Manuals**, page 2.
2. Perform the **Prime the System** as outlined in your PSM15 Instruction Manual. See **Related Manuals**, page 2.
3. Perform the **Weight Check** as outlined in your PSM15 Instruction Manual. See **Related Manuals**, page 2.
4. Dispense several full stroke shots until the PSM15 Metering Unit (H, page 7 in your PSM15 Instruction Manual) is free of air and there is no leakage at the dispense outlet after shutoff. See your PSM15 Instruction Manual.

# Parts

## Overview

Parts Description	Page
System, 2006051 and 2006052	13
Metering Unit, 2005930 and 2005931	14
Metering Base, CU6371 and CU6635	16
Structure Base	18
Junction Box Module	20
Bottle Plate Module	21
Inlet Valve, CU6602 and CU6595	22
Dispense Valve, 2005892 and 2005893	
Control Unit, 2002837	24

## System, 2006051 and 2006052

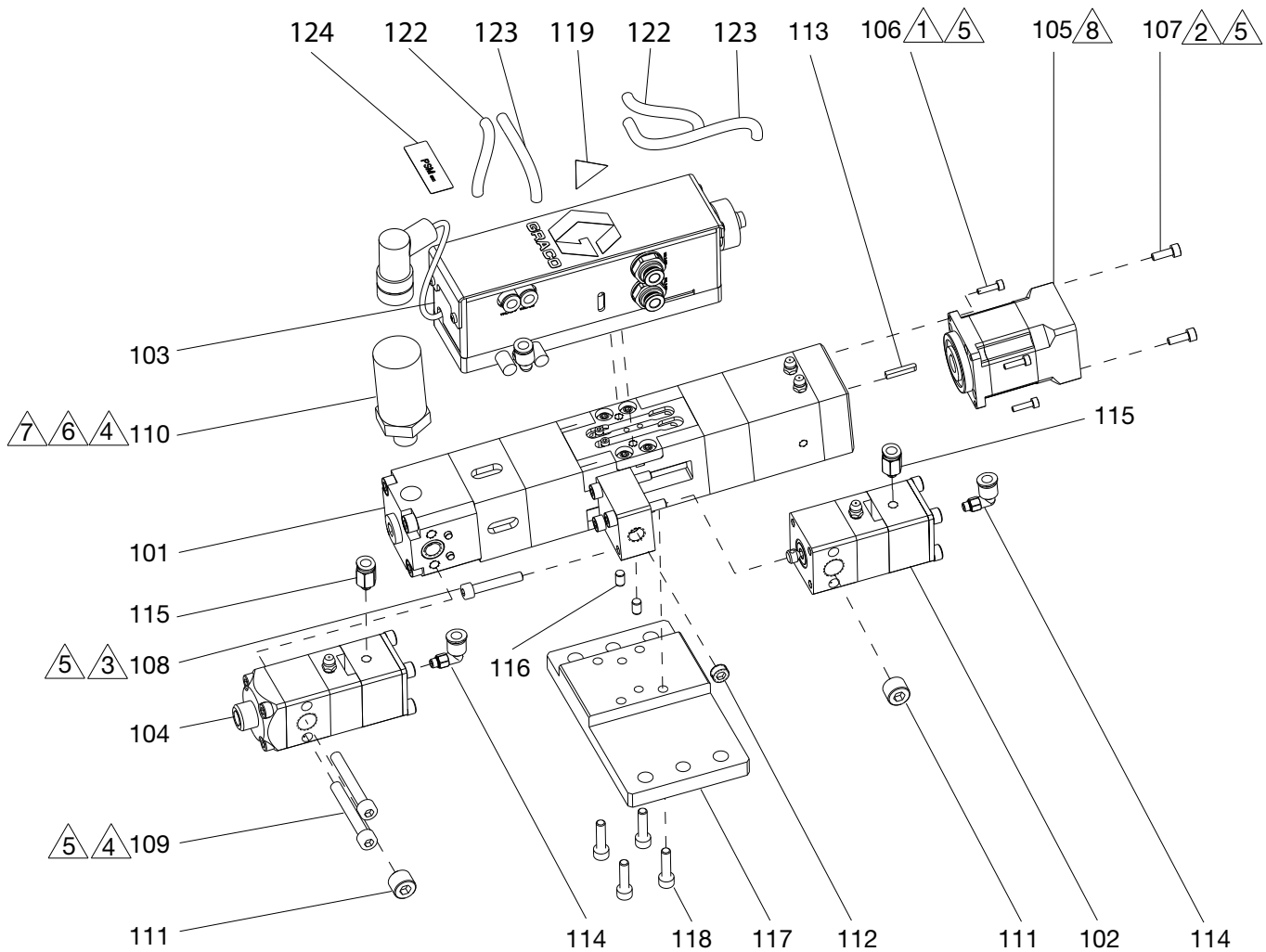


Ref.	Part	Description	Qty.					
			2006051	2006052	2006931	2006932	2006933	2006934
1	2005930	MODULE, MP, W/O motor, SST, PSM15; see page 14	1		1		1	
	2009531	MODULE, MP, W/O motor, CER, PSM15; see page 14		1		1		1
2	CU7758	MOTOR, servo, inovance,100W	1	1	1	1	1	1
3	2002837	CONTROL, PSM, PCB; see page 24	1	1	1	1	1	1
✓	2005273	KIT, module, Profinet			1	1		
✓	2000362	KIT, module, Ethernet IP					1	1
4*	2000277	CABLE, servo motor-A10	1	1	1	1	1	1
5*	2000274	CABLE, servo encoder-A10	1	1	1	1	1	1
6*	2000270	CABLE, junction box, 10M	1	1	1	1	1	1

✓ Not shown. Profinet module 2005273 or Ethernet IP module 2000362 is installed in the control box 2002837.

\* Not Shown.

## Metering Unit, 2005930 and 2005931



① Torque to 0.30-0.37 ft-lb (0.4-0.5 N•m).

② Torque to 0.52-0.74 ft-lb (0.7-1.0 N•m).

③ Torque to 1.25-1.70 ft-lb (1.7-2.3 N•m).

④ Torque to 2.21-2.95 ft-lb (3.0-4.0 N•m).

⑤ Apply blue anaerobic sealant.

⑥ Apply TSL sealing oil in inject sensor hole.

⑦ Apply sealant, pipe, SST.

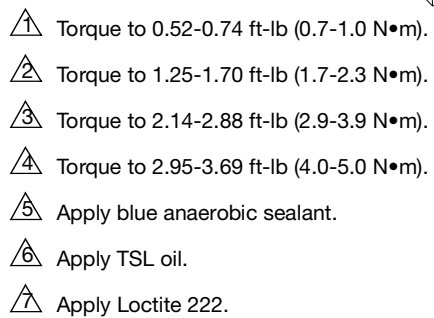
⑧ Installation direction as show.

## Metering Unit, 2005930 and 2005931

Ref.	Part	Description	Qty.	
			2005930	2005931
101	CU6371	BASE, metering, PSM15, SST; see page 16	1	
	CU6635	BASE, metering, PSM15, CER; see page 16		1
102	CU6602	KIT, valve, inlet, SST; see page 22	1	
	CU6595	KIT, valve, inlet, HW; see page 22		1
103	----	MODULE, junction box, PSM15; see page 20	1	1
104	2005892	VALVE, 1K mini, SST; see page 22	1	
	2005893	VALVE, 1K mini, HW; see page 22		1
105	CU0194	MODULE, gear reducer	1	1
106	----	SCREW, M3 x 0.5-12, hexagon socket	4	4
107	----	SCREW, M4 x 0.7-12, hexagon socket	2	2
108	----	SCREW, M5 x 0.8-30, socket	4	4
109	----	SCREW, M6 x 1-45, socket	2	2
110	18C018	Transmitter, pressure	1	1
111	18F960	PLUG, 1/4 NPT	2	2
112	18F962	PLUG, 1/8 NPT	1	1
113	----	KEY, C style, 3 x 16.5	1	1
114	----	FITTING, DIA 6, M5 x 0.8	2	2
115	----	FITTING, DIA 6, M5 x 0.8	2	2
116	18E324	PIN, dowel, DIA 5-8	2	2
117	----	PLATE, mounting, PSM15	1	1
118	----	SCREW, M5 x 0.8-20, Hexagon Socket	4	4
119▲	189930	LABEL, caution	1	1
120*	238909	WIRE, grounding assembly	1	1
121*	116343	SCREW, ground	1	1
122	----	TUBE, 6mm OD x 4mm ID, PU, black	1	1
123	----	TUBE, 6mm OD x 4mm ID, PU, blue	1	1
124	----	IDENTIFICATION, PSM15	1	1

\* Not Shown.

▲ Replacement safety labels, tags, and cards are available at no cost.





## Metering Base, CU6371 and CU6635

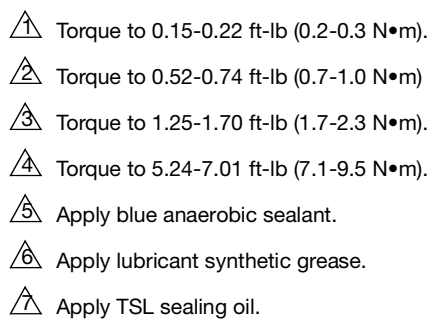
Ref.	Part	Description	Qty.	
			CU6371	CU6635
1001	----	BASE, structure, PSM15; see page 18	1	1
1002	CU0177	SLEEVE, cylinder, PSM15	1	1
1003❖✓◆*	----	PISTON, 480	1	1
1004❖✓◆*	----	O-RING	1	1
1005❖✓◆	----	SUPPORT, back, piston, PSM15	1	1
1006❖✓◆	----	PLATE, support, front, 480	1	1
1007❖ ✓	18G068	CYLINDER, 480, PSM15, SST	1	
	18G069	CYLINDER, 480, PSM15, CER		1
1008	CU0184	COVER, split, PSM15	1	1
1009	18D615	PLUG, blind flange G1/4	1	1
1010❖✓◆*	----	PACKING, O-ring	2	2
1011	----	O-RING	1	1
1012	----	PIN, dowel, dia 4-8	2	2
1013	----	SCREW, M6 x 1-110, hexagon socket	4	4
1014	CU0178	BLOCK, cover, PSM15	1	1
1015	----	SCREW, M6 x 1-70, socket head	4	4
1016	CU0179	SEAT, reduction box, PSM15	1	1
1017	----	SCREW, M4 x 0.7-10, socket head	4	4
1018	CU0180	RING, guide oil, PSM15	1	1
1019	120892	FITTING, grease flush	2	2

❖ Parts included in SST Metering Module Kit 2006388.

✓ Parts included in CER Metering Module Kit 2006389.

◆ Parts included in Piston Module Kit 2006390.

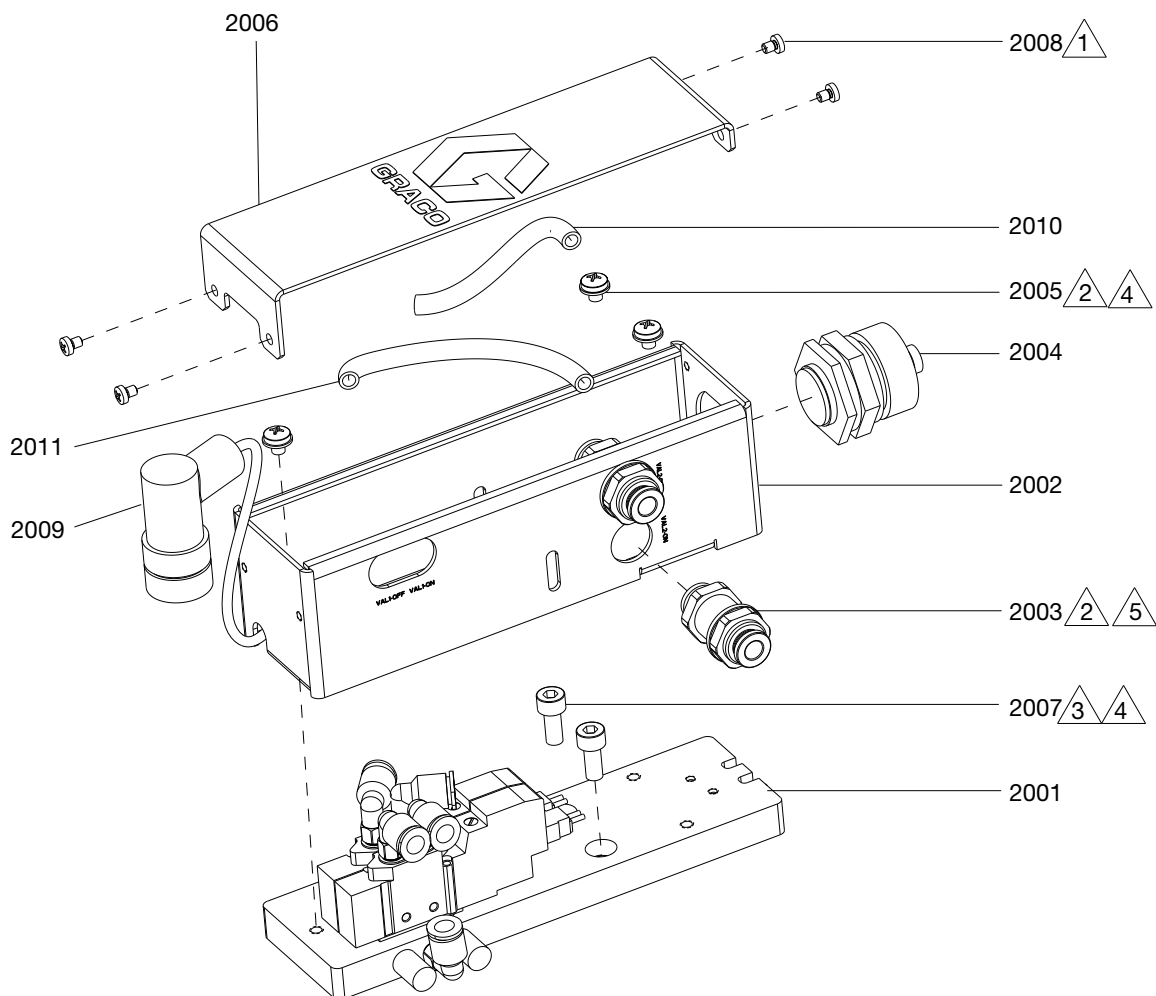
\* Parts included in Piston Kit 2006391.



## Structure Base

Ref.	Part	Description	Qty.
10001	CU6583	ASSEMBLY, structure, transmission	1
10001a	----	ADAPTER, axle sleeve	1
10001b	----	SCREW, ball, PSM15	1
10001c	----	BEARING, stop	1
10001d	----	WASHER, bearing	1
10001e	----	SCREW, M4 x 0.7-10, socket head	4
10001f	----	WASHER, adapter	1
10002	CU6584	ASSEMBLY, structure, feeding	1
10002a	----	ROD, piston	1
10002b	----	PART, multi function	1
10002c	----	WASHER, seal 1	1
10002d	----	O-RING	1
10002e	----	SCREW, restructuring, flat round heat M8-12	1
10003	----	BASE, structure	1
10004	CU0172	SLEEVE, guide	1
10005	----	SEAT, cylinder	1
10006	----	SEAT, bearing	1
10007	CU1413	BEARING, ball	3
10008	CU0176	SLEEVE, screw	2
10009	----	SCREW, M2.5 x 0.45-10, socket	2
10010	CU1478	PLATE, cross	1
10011	----	SCREW, hexagon socket flat round head, M5 x 10	4
10012	----	PIN, dowel, dia 5 x 8	4
10013	CU1412	RING, adjust, bearing	1
10014	CU1394	WASHER, bearing	1

## Junction Box Module



△1 Torque to 0.07-0.11 ft-lb (0.1-0.15 N•m).

△4 Apply blue anaerobic sealant.

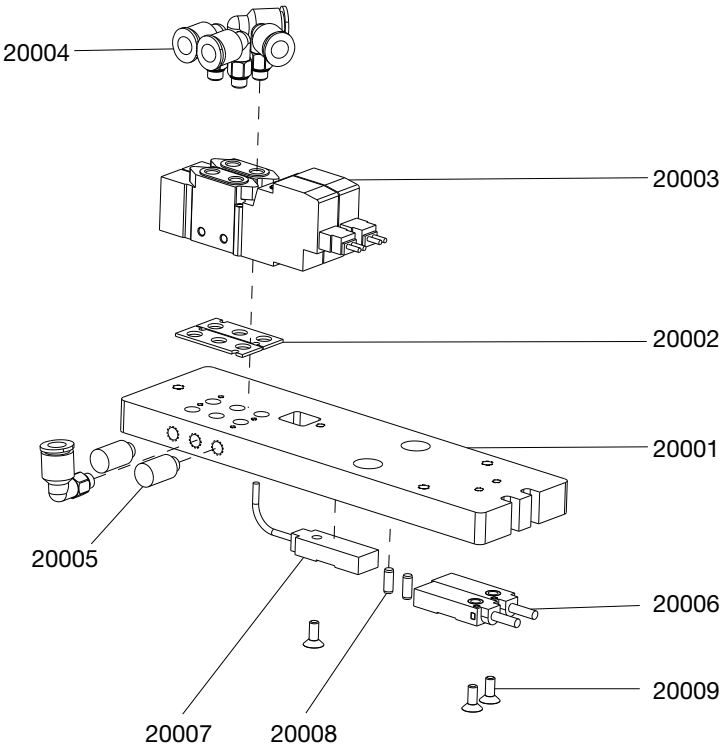
△2 Torque to 0.52-0.74 ft-lb (0.7-1.0 N•m).

△5 Sealing rubber pad is on outside.

△3 Torque to 1.25-1.70 ft-lb (1.7-2.3 N•m).

Ref.	Part	Description	Qty.
2001	----	MODULE, bottom plate, PSM15; see page 21	1
2002	----	FRAME, control, PSM15	1
2003	----	FITTING, DIA 6, M14 x 1	2
2004	----	ADAPTER, WF20, M26	1
2005	----	SCREW, M4 x 0.7-5, Phillips, W washer	3
2006	----	COVER, control, PSM15	1
2007	----	SCREW, M5 x 0.8-12, hexagon socket	2
2008	----	SCREW, M3 x 0.5-6, pan head, SST	4
2009	----	FITTING, transmitter, pressure	1
2010	----	TUBE, 6 mm od X 4 mm ID, PU, BLK	0.5
2011	----	TUBE, 6 mm od X 4 mm ID, PU, BLUE	0.5

# Bottle Plate Module

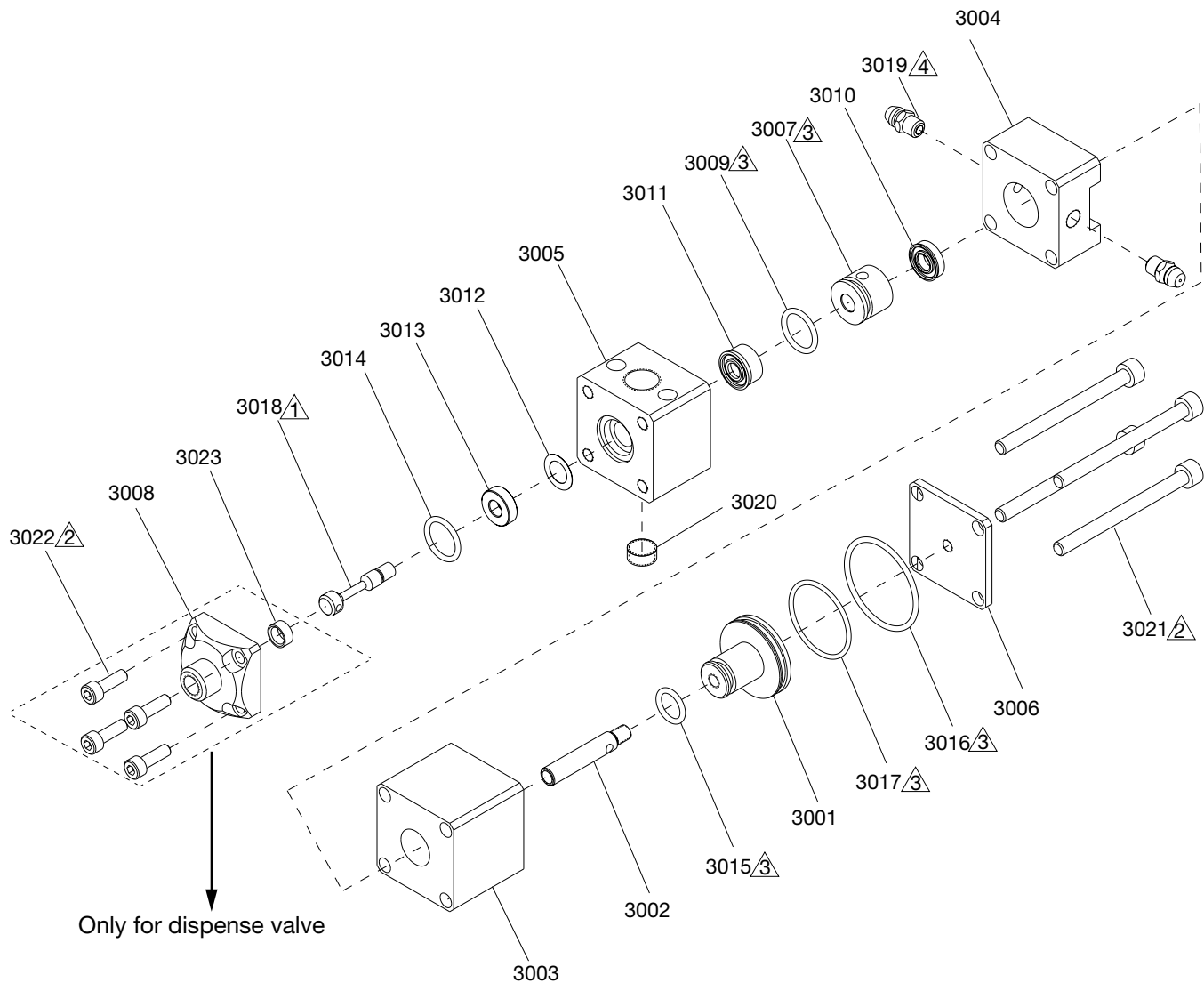


Ref.	Part	Description	Qty.
20001	----	PLATE, electric box bottom	1
20002*	----	GASKET, rubber, PSM	2
20003*	----	KIT, solenoid valve, PSM	2
20004*	----	FITTING, DIA 6, M5 x 0.8	5
20005	----	MUFFLER, M5	2
20006	CU1415	SENSOR, position	2
20007	----	SENSOR, position	1
20008	----	FITTING, UN13/16-16, NPT1/2	2
20009	----	SCREW, M3 x 0.5-8, flat head, SST	3

\* Parts included in fitting solenoid valve kit 2006571.

## Inlet Valve, CU6602 and CU6595

## Dispense Valve, 2005892 and 2005893



- △1 Screw needle with blue anaerobic sealant. Torque to 15-20 in-lb (1.69-2.26 N•m).
- △2 Use blue anaerobic sealant to install screws, tighten evenly to compress bearing. Torque to 40-45 in-lb (4.52-5.08 N•m).
- △3 Lube all o-ring and sealing surfaces with high temperature lubricant grease.
- △4 Insert one grease fitting, pump high temperature lubricant grease across bearing, then insert the other fitting.

## Inlet Valve, CU6602 and CU6595

## Dispense Valve, 2005892 and 2005893

Ref.	Part	Description	Qty.			
			CU6602	CU6595	2005892	2005893
3001✓	----	PISTON, dispense valve	1	1	1	1
3002◆	CU1383	SHAFT, mini TC	1		1	
✱	CU6603	SHAFT, HW, piston, TC mini		1		1
3003	CU7749	HOUSING, air cylinder	1	1	1	1
3004	CU7750	HOUSING, lubrication	1	1	1	1
3005	CU7751	HOUSING, fluid, SST, 1K mini valve	1	1	1	1
3006	CU7752	CAP, air cylinder	1	1	1	1
3007✿	CU7753	BEARING, 1K mini	1	1	1	1
3008	CU7754	FLANGE, NOSE			1	1
3009✿	----	PACKING, O-ring	1	1	1	1
3010✿	----	PACKING, U-cup URT 1/4, 1/2, 1/8 UR	1	1	1	1
3011◆	----	SEAL, U-cup polymt 1/4, 1/2, 1/4	1		1	
✱	----	PACKING, U-cup, 1/4 x 1/2 x 1/4, HW		1		1
3012◆✱	----	GASKET, seat	1	1	1	1
3013◆✱	----	SEAT, valve	1	1	1	1
3014◆✱	----	PACKING, O-ring	1	1	1	1
3015✓	----	PACKING, O-ring	1	1	1	1
3016✓	----	PACKING, O-ring	1	1	1	1
3017✓	----	O-RING, ID 25 mm x 1.5 mm	1	1	1	1
3018◆	626062	NEEDLE, 2K2 SST hardened	1		1	
✱	26D829	NEEDLE, HW		1		1
3019	120892	FITTING, grease flush	2	2	2	2
3020	18F962	PLUG, 1/8 NPT	1	1	1	1
3021	----	SCREW, M5 × 0.8 - 60, socket	4	4	4	4
3022	----	SCREW, M5 × 0.8 -16, socket head, SST			4	4
3023	----	INSERT, snuff-back, 2K2			1	1

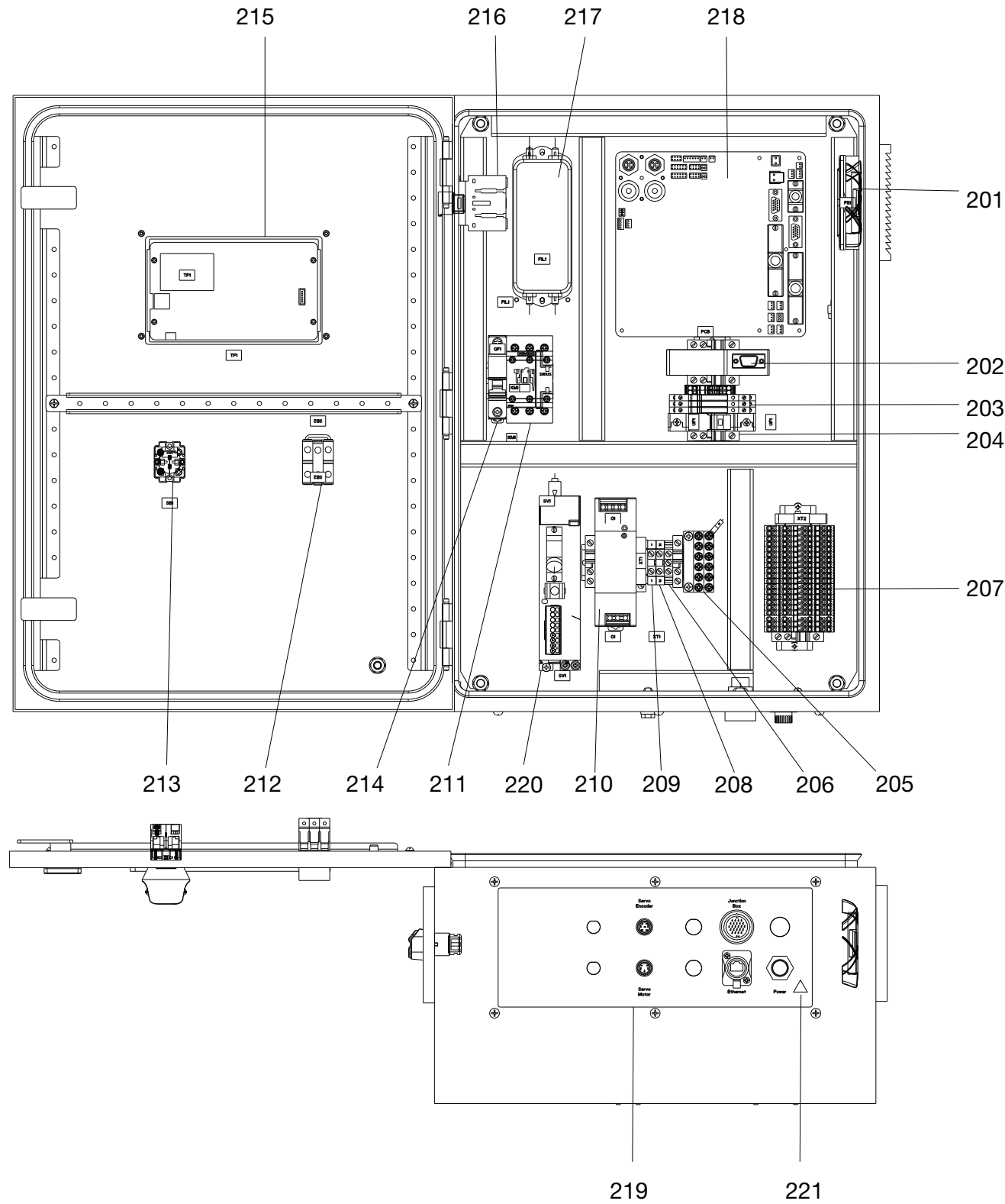
✓ Parts included in Valve Piston Kit 2006392.

◆ Parts included in SST Mini 1K Valve Needle Module Kit 2006437.

✱ Parts included in HW Mini 1K Valve Needle Module Kit 2006438.

✿ Parts included in Valve Bearing Kit 2006440.

Control Unit, 2002837





## Control Unit, 2002837

Ref.	Part	Description	Qty.
201	CU0011	FAN, assembly	1
202	2000361	MODULE, RS-232 to Ethernet	1
203	CU0489	RELAY, module with base	3
204	CU0018	HOLDER, fuse, ABB	1
	CU0341	FUSE	1
205	CU0053	GROUNDING BAR	1
206	CU0487	TERMINAL, ground, green-yellow	1
207	CU0488	TERMINAL, block, gray	20
208	CU0019	TERMINAL, blue	1
209	CU0020	TERMINAL, gray	1
210	CU0016	POWER SUPPLY, 150W, 24VDC, MW	1
211	CU0017	CONTACT, 3P, 1NO+1NC	1
212	2000176	STARTER, operator	1
213	2000178	STOP, emergency	1
214	CU0022	CIRCUIT BRKR, 1P, 6A	1
215	CU7788	DISPLAY, PSM	1
216	CU0026	SWITCH, disconnect, 3P	1
217	CU0492	CABLE, power supply, inside	1
218	2000267	BOARD, PCB, Assembly	1
219	CU0397	PANEL, socket, external cables	1
220	2000343	DRIVER, servo	1
221▲	189930	Label, caution	1
222*	2000316	BRAND, PSM	1
223*	----	Blank, label kit	1
224*	----	IDENTIFICATION, PSM product	1

\* Not Shown.

▲ Replacement safety labels, tags, and cards are available at no cost.

# Kits and Accessories

## Communication Module Kits

Part	Description	Qty.
2005273	KIT, module, Profinet	1
2000362	KIT, module, Ethernet IP	1

## Metering Unit Kits

Part	Description	Qty.
2006388	KIT, metering module, PSM15, SST	1
2006389	KIT, metering module, PSM15, CER	1
2006390	KIT, piston module, PSM15	1
2006391	KIT, piston, PSM15	1

## Module Kits

Part	Description	Qty.
2006440	KIT, bearing, valve, PSM15	1
2006444	KIT, needle module, mini 1K valve, SST	1
2006445	KIT, needle module, mini 1K valve, HW	1

## Junction Box Kit

Part	Description	Qty.
2006571	KIT, solenoid valve, fitting M5 x 0.8, DIA 6	1

# Technical Specifications

PSM15 System		
	US	Metric
Maximum Inlet Fluid Pressure	1200 psi	8.3 MPa, 83 bar
Maximum Working Fluid Pressure	1200 psi	8.3 MPa, 83 bar
Maximum Air Pressure	100 psi	0.7 MPa, 7 bar
Electrical Power	200–240 VAC, 50/60 Hz, 10 A	
Viscosity Range	20–1,000,000 cps	
Wetted Parts	303/304 Stainless Steel, Hard Chrome, Ceramic, UHMWPE, NBR, PTFE	
Shot Size Range <sup>(1)</sup>	0.005–15 cc	
Shot Size Repeatability	1%	
Maximum Flowrate <sup>(2)</sup>	1.8 cc/s	
Maximum Working Temperature	158°F	70°C
Inlet / Outlet Sizes		
Air Inlet Size	1/4 in.	6 mm
Fluid Inlet Size	1/4 in. npt (f)	
Fluid Outlet Size	1/4 in. npt (f)	
Weight		
PSM15 Metering Unit	11 lb	5 kg
PSM15 Control Unit	71 lb	32 kg
Notes		
All trademarks or registered trademarks are the property of their respective owners.		
(1) Minimum shot size varies based on the material type and the customer tolerance requirements.		
(2) Maximum flowrate varies based on the material viscosity.		

## California Proposition 65

### CALIFORNIA RESIDENTS

 **WARNING:** Cancer and reproductive harm – [www.P65warnings.ca.gov](http://www.P65warnings.ca.gov).

# Graco Standard Warranty

Graco warrants all equipment referenced in this document which is manufactured by Graco and bearing its name to be free from defects in material and workmanship on the date of sale to the original purchaser for use. With the exception of any special, extended, or limited warranty published by Graco, Graco will, for a period of twelve months from the date of sale, repair or replace any part of the equipment determined by Graco to be defective. This warranty applies only when the equipment is installed, operated and maintained in accordance with Graco's written recommendations.

This warranty does not cover, and Graco shall not be liable for general wear and tear, or any error, damage or wear caused by faulty installation, misapplication, abrasion, corrosion, inadequate or improper maintenance, negligence, accident, tampering, or substitution of non-Graco component parts. Nor shall Graco be liable for error, damage or wear caused by the incompatibility of Graco equipment with structures, accessories, equipment or materials not supplied by Graco, or the improper design, manufacture, installation, operation or maintenance of structures, accessories, equipment or materials not supplied by Graco.

This warranty is conditioned upon the prepaid return of the equipment claimed to be defective to an authorized Graco distributor for verification of the claimed defect. If the claimed defect is verified, Graco will repair or replace free of charge any defective parts. The equipment will be returned to the original purchaser transportation prepaid. If inspection of the equipment does not disclose any defect in material or workmanship, repairs will be made at a reasonable charge, which charges may include the costs of parts, labor, and transportation.

**THIS WARRANTY IS EXCLUSIVE, AND IS IN LIEU OF ANY OTHER WARRANTIES, EXPRESS OR IMPLIED, INCLUDING BUT NOT LIMITED TO WARRANTY OF MERCHANTABILITY OR WARRANTY OF FITNESS FOR A PARTICULAR PURPOSE.**

Graco's sole obligation and buyer's sole remedy for any breach of warranty shall be as set forth above. The buyer agrees that no other remedy (including, but not limited to, incidental or consequential damages for lost profits, lost sales, injury to person or property, or any other incidental or consequential loss) shall be available. Any action for breach of warranty must be brought within two (2) years of the date of sale.

**GRACO MAKES NO WARRANTY, AND DISCLAIMS ALL IMPLIED WARRANTIES OF MERCHANTABILITY AND FITNESS FOR A PARTICULAR PURPOSE, IN CONNECTION WITH ACCESSORIES, EQUIPMENT, MATERIALS OR COMPONENTS SOLD BUT NOT MANUFACTURED BY GRACO.** These items sold, but not manufactured by Graco (such as electric motors, switches, hose, etc.), are subject to the warranty, if any, of their manufacturer. Graco will provide purchaser with reasonable assistance in making any claim for breach of these warranties.

In no event will Graco be liable for indirect, incidental, special or consequential damages resulting from Graco supplying equipment hereunder, or the furnishing, performance, or use of any products or other goods sold hereto, whether due to a breach of contract, breach of warranty, the negligence of Graco, or otherwise.

## **FOR GRACO CANADA CUSTOMERS**

The Parties acknowledge that they have required that the present document, as well as all documents, notices and legal proceedings entered into, given or instituted pursuant hereto or relating directly or indirectly hereto, be drawn up in English. Les parties reconnaissent avoir convenu que la rédaction du présente document sera en Anglais, ainsi que tous documents, avis et procédures judiciaires exécutés, donnés ou intentés, à la suite de ou en rapport, directement ou indirectement, avec les procédures concernées.

# Graco Information

## Sealant and Adhesive Dispensing Equipment

For the latest information about Graco products, visit [www.graco.com](http://www.graco.com).

For patent information, see [www.graco.com/patents](http://www.graco.com/patents).

**TO PLACE AN ORDER**, contact your Graco distributor, go to [www.graco.com](http://www.graco.com), or call to identify the nearest distributor.

**If calling from the USA:** 1-800-746-1334

**If calling from Asia Pacific:** 00-86-512-6260-5711 or 00-86-21-2310-6198

**If calling from Europe:** 00-32-89-770-862

*All written and visual data contained in this document reflects the latest product information available at the time of publication.  
Graco reserves the right to make changes at any time without notice.*

Original instructions. This manual contains English. MM 3B0107

**Graco Headquarters:** Minneapolis

**International Offices:** Belgium, China, Japan, Korea

**GRACO INC. AND SUBSIDIARIES • P.O. BOX 1441 • MINNEAPOLIS MN 55440-1441 • USA**  
**Copyright 2023, Graco Inc. All Graco manufacturing locations are registered to ISO 9001.**

[www.graco.com](http://www.graco.com)  
Revision B, March 2025