

PR-Xv30

3B0213B

Variable Ratio Metering System

EN

For accurate metering, mixing and dispensing of two-component materials. For professional use only.

Not approved for use in explosive atmospheres or hazardous (classified) locations.

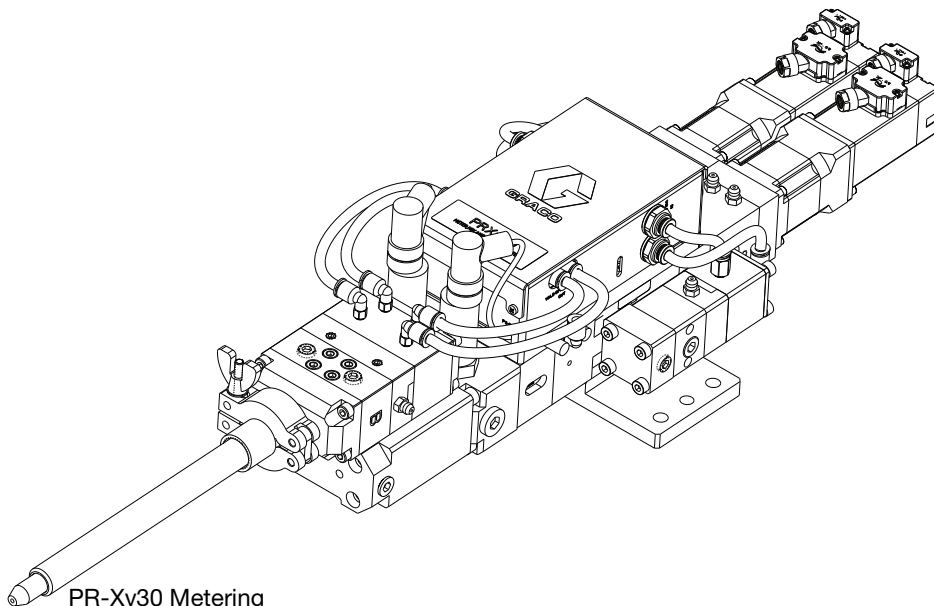
1200 psi (8.3 MPa, 83 bar) Maximum Working Pressure

100 psi (0.7 MPa, 7 bar) Maximum Air Inlet Pressure.



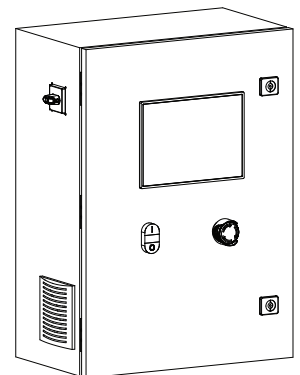
Important Safety Instructions

Read all warnings and instructions in this manual and your instruction manual before using the equipment. Save these instructions.



PR-Xv30 Metering
Unit, Mini TC
Dispense Valve

PR-Xv30 Control Unit



Contents

- Related Manuals 2**
- Models 3**
- Safety Symbols 4**
- General Warnings 5**
 - Keep Components A and B Separate 7
 - Changing Materials 7
- Repair 8**
 - Piston/Cylinder Replacement 8
 - Install Cylinder 9
 - Prepare for Operation 10
- Recycling and Disposal 10**
 - End of Product Life 10
- Parts 11**
 - Overview 11
 - System 12
 - Metering Unit 14
 - Base, Metering 16
 - Junction Box 20
 - Module, Valve, Outlet 22
 - Kit, Valve, Inlet 26
 - Control Unit 28
- Kits and Accessories 30**
 - Communication Module 30
 - Cables 30
- Technical Specifications 31**
- California Proposition 65 31**
- Graco Standard Warranty 32**

Related Manuals

Manuals in English	Description
3B0212A	PR-Xv30 PCB Instructions Manual

Models

Part	Description	Communication Mode ⁽³⁾		
		I/O	Profinet	Ethernet IP
2005711	System, PR-Xv30, SST ⁽¹⁾ , I/O	✓		
2005712	System, PR-Xv30, CER ⁽²⁾ , I/O	✓		
2007240	System, PR-Xv30, SST ⁽¹⁾ , Profinet		✓	
2007241	System, PR-Xv30, CER ⁽²⁾ , Profinet		✓	
2007242	System, PR-Xv30, SST ⁽¹⁾ , Ethernet IP			✓
2007243	System, PR-Xv30, CER ⁽²⁾ , Ethernet IP			✓
2006950	Control Unit	✓		

⁽¹⁾ SST: Stainless steel material



⁽²⁾ CER: Ceramic material









⁽³⁾ The communication mode is installed in the control unit.

NOTE: Any PR-Xv30 system can be converted to Profinet communication mode by ordering Profinet modebus kit 2006777, or converted to Ethernet-IP communication mode by ordering Ethernet-IP modebus kit 2007139, and then performing **Add Communication Module** in your PR-Xv30 Instruction Manual.

Safety Symbols

The following safety symbols appear throughout this manual and on warning labels. Read the table below to understand what each symbol means.

Symbol	Meaning
	Electric Shock Hazard
	Equipment Misuse Hazard
	Fire and Explosion Hazard
	Moving Parts Hazard
	Pressurized Equipment Hazard
	Skin Injection Hazard
	Skin Injection Hazard
	Splash Hazard
	Toxic Fluid or Fumes Hazard

Symbol	Meaning
	Do Not Place Hands or Other Body Parts Near Fluid Outlet
	Do Not Stop Leaks with Hand, Body, Glove or Rag
	Eliminate Ignition Sources
	Follow Pressure Relief Procedure
	Ground Equipment
	Read Manual
	Ventilate Work Area
	Wear Personal Protective Equipment











Safety Alert Symbol

This symbol indicates: Attention! Become Alert! Look for this symbol throughout the manual to indicate important safety messages.

General Warnings

The following warnings apply throughout this manual. Read, understand, and follow the warnings before using this equipment. Failure to follow these warnings can result in serious injury.

 WARNING	
 	ELECTRIC SHOCK HAZARD This equipment must be grounded. Improper grounding, setup, or usage of the system can cause electric shock. <ul style="list-style-type: none"> • Turn off and disconnect all power before disconnecting any cables and before servicing or installing equipment. • Connect only to grounded power source. • All electrical wiring must be done by a qualified electrician and comply with all local codes and regulations.
    	SKIN INJECTION HAZARD High-pressure fluid from dispensing device, hose leaks, or ruptured components will pierce skin. This may look like just a cut, but it is a serious injury that can result in amputation. Get immediate surgical treatment. <ul style="list-style-type: none"> • Do not point dispensing device at anyone or at any part of the body. • Do not put your hand over the fluid outlet. • Do not stop or deflect leaks with your hand, body, glove, or rag. • Follow the Pressure Relief Procedure in your PR-Xv30 Instruction Manual when you stop dispensing and before cleaning, checking, or servicing equipment. • Tighten all fluid connections before operating the equipment. • Check hoses and couplings daily. Replace worn or damaged parts immediately.

WARNING



FIRE AND EXPLOSION HAZARD

Flammable fumes, such as solvent and paint fumes, in **work area** can ignite or explode. Paint or solvent flowing through the equipment can cause static sparking. To help prevent fire and explosion:



- Use equipment only in well-ventilated area.
- Eliminate all ignition sources; such as pilot lights, cigarettes, portable electric lamps, and plastic drop cloths (potential static sparking).
- Ground all equipment in the work area. See **Grounding** instructions in your PR-Xv30 Instruction Manual.
- Never spray or flush solvent at high pressure.
- Keep work area free of debris, including solvent, rags and gasoline.
- Do not plug or unplug power cords, or turn power or light switches on or off when flammable fumes are present.
- Use only grounded hoses.
- Hold gun firmly to side of grounded pail when triggering into pail. Do not use pail liners unless they are anti-static or conductive.
- **Stop operation immediately** if static sparking occurs or you feel a shock. Do not use equipment until you identify and correct the problem.
- Keep a working fire extinguisher in the work area.



EQUIPMENT MISUSE HAZARD

Misuse can cause death or serious injury.



- Do not operate the unit when fatigued or under the influence of drugs or alcohol.
- Do not exceed the maximum working pressure or temperature rating of the lowest rated system component. See **Technical Specifications** in all equipment manuals.
- Use fluids and solvents that are compatible with equipment wetted parts. See **Technical Specifications** in all equipment manuals. Read fluid and solvent manufacturer's warnings. For complete information about your material, request Safety Data Sheets (SDSs) from distributor or retailer.
- Turn off all equipment and follow the **Pressure Relief Procedure** in your PR-Xv30 Instruction Manual when equipment is not in use.
- Check equipment daily. Repair or replace worn or damaged parts immediately with genuine manufacturer's replacement parts only.
- Do not alter or modify equipment. Alterations or modifications may void agency approvals and create safety hazards.
- Make sure all equipment is rated and approved for the environment in which you are using it.
- Use equipment only for its intended purpose. Call your distributor for information.
- Route hoses and cables away from traffic areas, sharp edges, moving parts, and hot surfaces.
- Do not kink or over bend hoses or use hoses to pull equipment.
- Keep children and animals away from work area.
- Comply with all applicable safety regulations.



MOVING PARTS HAZARD

Moving parts can pinch, cut or amputate fingers and other body parts.



- Keep clear of moving parts.
- Do not operate equipment with protective guards or covers removed.
- Equipment can start without warning. Before checking, moving, or servicing equipment, follow the **Pressure Relief Procedure** in your PR-Xv30 Instruction Manual and disconnect all power sources.

! WARNING



TOXIC FLUID OR FUMES HAZARD

Toxic fluids or fumes can cause serious injury or death if splashed in the eyes or on skin, inhaled, or swallowed.

- Read Safety Data Sheets (SDSs) to know the specific hazards of the fluids you are using.
- Store hazardous fluid in approved containers, and dispose of it according to applicable guidelines.



PERSONAL PROTECTIVE EQUIPMENT

Wear appropriate protective equipment when in the work area to help prevent serious injury, including eye injury, hearing loss, inhalation of toxic fumes, and burns. Protective equipment includes but is not limited to:

- Protective eyewear, and hearing protection.
- Respirators, protective clothing, and gloves as recommended by the fluid and solvent manufacturer.

Keep Components A and B Separate



Cross-contamination can result in cured material in fluid lines which could cause serious injury or damage equipment. To prevent cross-contamination:

- Never interchange component A and component B wetted parts.
- Never use solvent on one side if it has been contaminated from the other side.

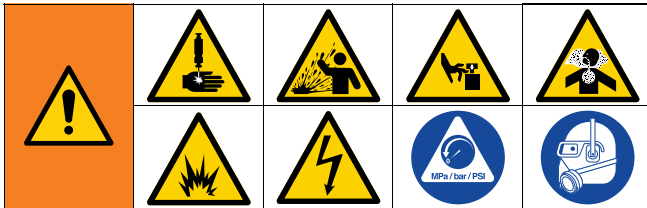
Changing Materials

NOTICE

Changing the material types used in your equipment requires special attention to avoid equipment damage and downtime.

- When changing materials, flush the equipment multiple times to ensure it is thoroughly clean.
- Always clean the fluid inlet strainers after flushing.
- Check with your material manufacturer for chemical compatibility.
- When changing between epoxies and urethanes or polyureas, disassemble and clean all fluid components and change hoses. Epoxies often have amines on the B (hardener) side. Polyureas often have amines on the B (resin) side.

Repair



This equipment stays pressurized until pressure is manually relieved. To help prevent serious injury from pressurized fluid, such as skin injection, splashing fluid and moving parts, follow **Pressure Relief Procedure** in your PR-Xv30 Instruction Manual when you stop operating and before cleaning, checking, or servicing the equipment.

To avoid injury from toxic fluids or fumes, such as plashing in the eyes or on skin, wear appropriate personal protective equipment.

To avoid injury from fire, explosion, or electric shock, all electrical wiring must be done by a qualified electrician and comply with all local codes and regulations.

Piston/Cylinder Replacement

NOTE: Graco suggests using TSL™ only in repair procedures. All procedures should be performed by an appropriate professional.

Disassemble Cylinder

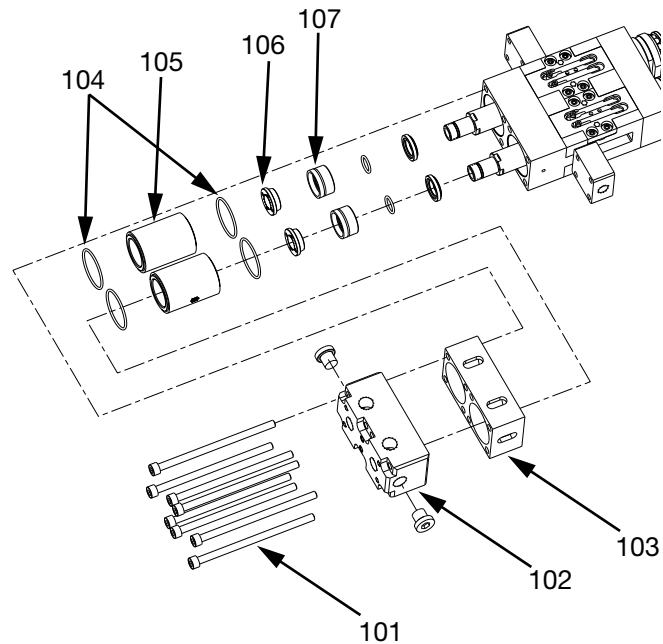



FIG. 1 Disassemble Cylinder

1. Perform the step 2 to step 4 of **Pressure Relief Procedure** in your PR-Xv30 Instruction Manual. See **Related Manuals**, page 2.
2. Turn off the air supply when the fluid pressure drops to ZERO.

- Go to the Advanced Screen of the PR-Xv30 Control Unit (G, page 7 in your PR-Xv30 Instruction Manual). Set the move speed at about 0.2 cc/s, then jog select  for part A and B until lights of A Down and B Down are activated.

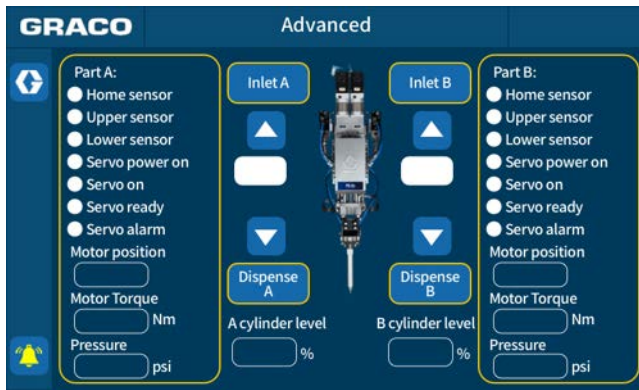


FIG. 2 Advanced Screen

NOTE: To open the Advanced mode, the operator must enter the password **1492**.

- Turn off the system power.
- Disconnect all cables and tubes from Junction Box Assembly (AC, page 8 in your PR-Xv30 Instruction Manual).
- Open the top cover of the Junction Box (AC, page 8) and loosen the four fix screws in the cylinder housing (110, page 8). Next, take off the Junction Box Assembly (AC, page 8 in your PR-Xv30 Instruction Manual).
- Remove the dispense valve assembly.
- Remove the eight screws (101).
- Remove the cover (102).
- Remove the cylinder sleeve (103).
- Remove the O-rings (104) and the cylinder (105).
- Remove the front plate (106) with specific tool.
- Remove the piston (107).
- Clear all parts that have been removed.

Install Cylinder

- Install a new piston (107) with TSL oil.
- Install the front plate (106) with specific tool.
- Lubricate the new O-rings (104) with TSL oil and insert it into cylinder (105) blocks.
- Install the O-rings (104) and the cylinder (105).
- Install the cylinder sleeve (103).
- Install the cover (102).
- Tighten the eight screws (101).
- Install other parts.

NOTE: Not all parts need to be replaced with new ones. The operator may replace the parts per actual situation.


Prepare for Operation

1. Pressurize Supply Pump System (E, page 7) connected to the PR-Xv30 Reload Valve (AD, page 8). See your PR-Xv30 Instruction Manual.
2. Perform the **Prime the System** as outlined in your PR-Xv30 Instruction Manual. See **Related Manuals**, page 2.
3. Perform the **Weight Check** as outlined in your PR-Xv30 Instruction Manual. See **Related Manuals**, page 2.
4. Dispense several full stroke shots until the PR-Xv30 Metering Unit (J, page 7) is free of air and there is no leakage at the dispense outlet after shutoff. See your PR-Xv30 Instruction Manual.

Recycling and Disposal

End of Product Life

At the end of the product's useful life, dismantle and recycle it in a responsible manner.

- Follow the **Pressure Relief Procedure** in your PR-Xv30 Instruction Manual. See **Related Manuals**, page 2.
- Drain and dispose of fluids according to applicable regulations. Refer to the material manufacturer's Safety Data Sheet.
- Remove motors, circuit boards, LCDs (liquid crystal displays), and other electronic components. Recycle according to applicable regulations.
- Do not dispose of electronic components with household or commercial waste. 
- Deliver remaining product to a recycling facility.

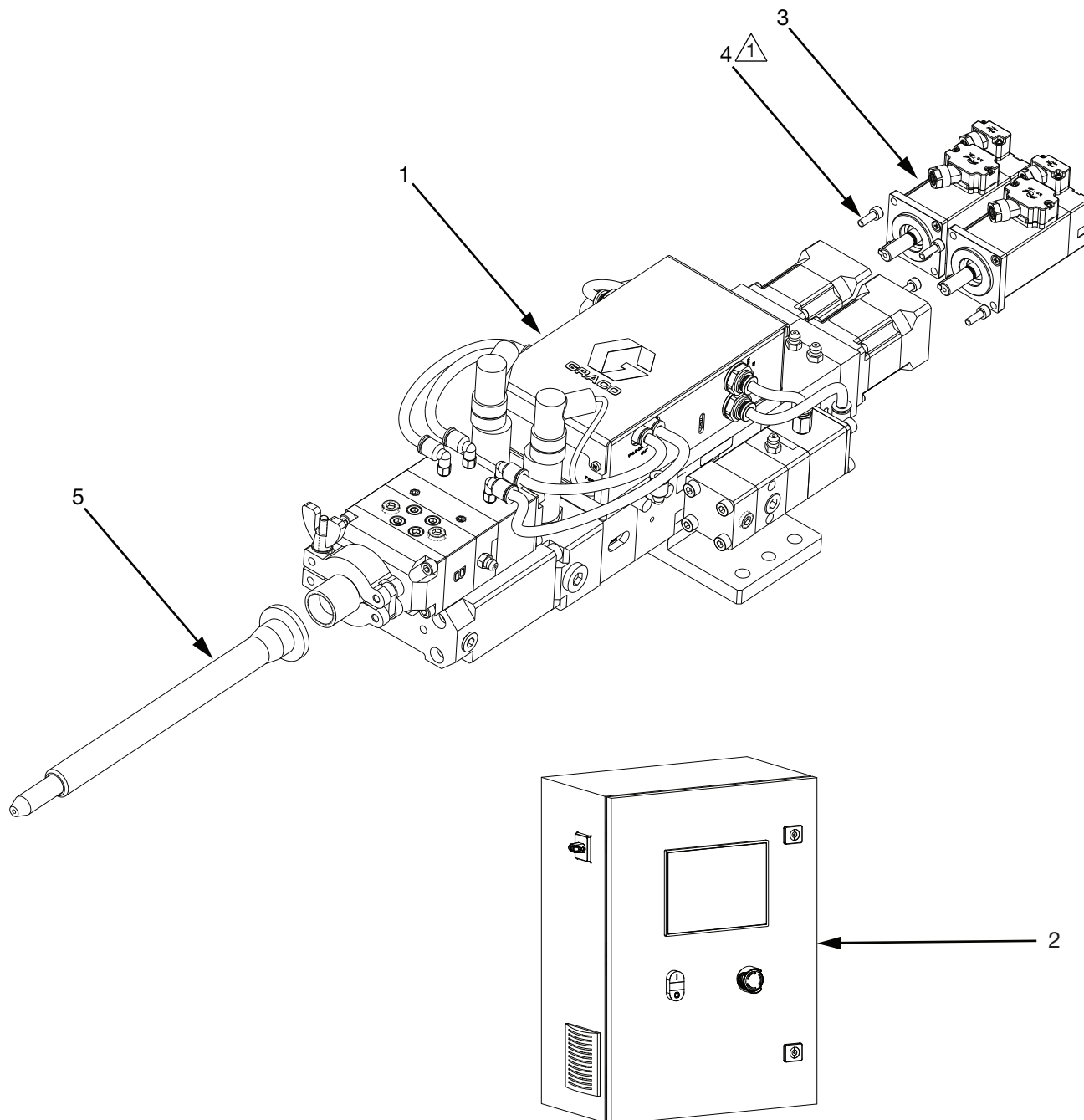
Parts


Overview

Parts Description	Page
System	12
Metering Unit	14
Base, Metering	16
Base, Structure, CU6585	18
Junction Box	20
Module, Valve, Outlet	22
Valve, Mini TC, 2005620 and 2005621	24
Kit, Valve, Inlet	26
Control Unit	28

System

2005711, 2005712, 2007240, 2007241, 2007242 and 2007243



 Torque to 0.52-0.74 ft-lb (0.7-1.0 N•m).

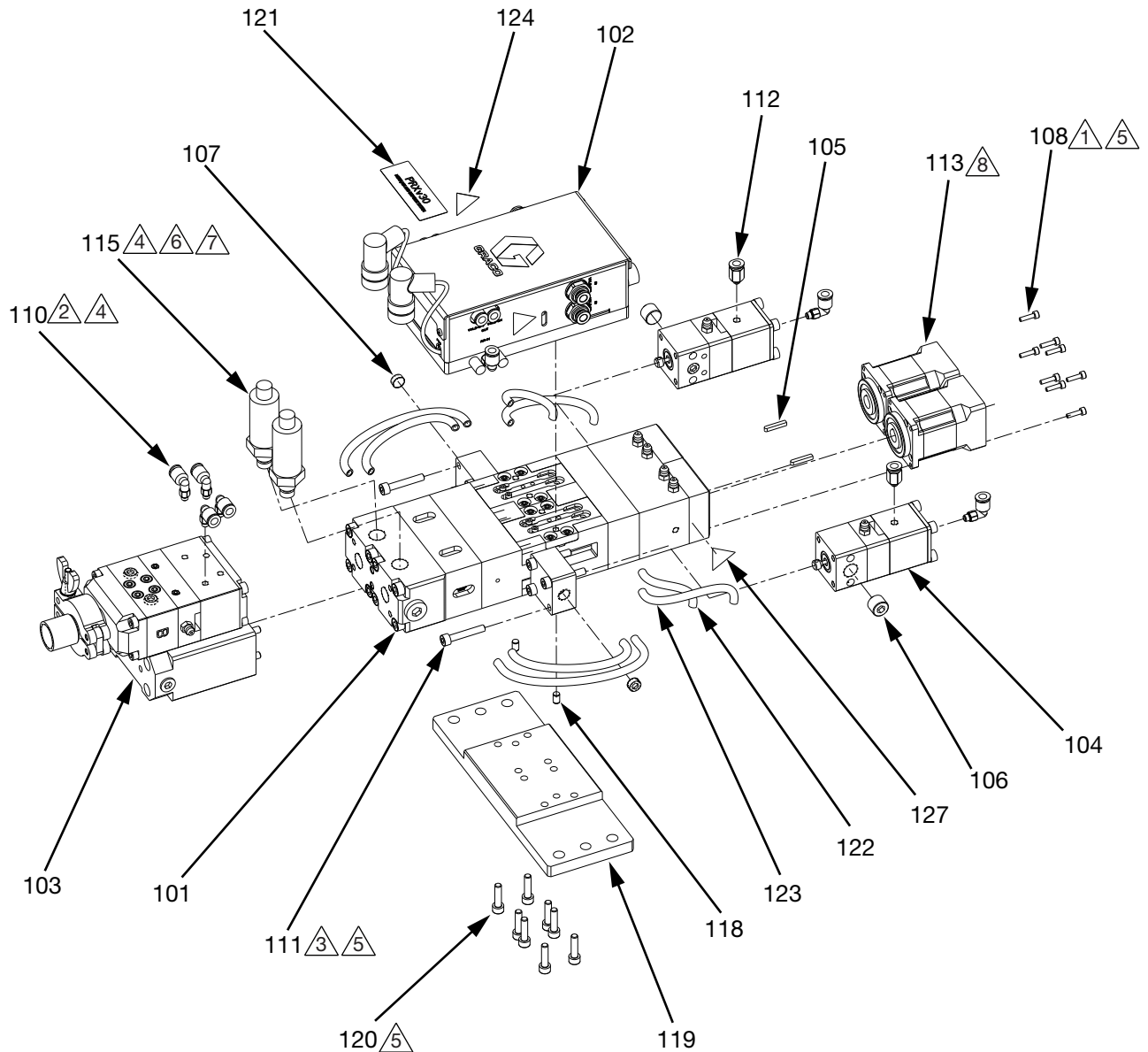
System Parts List, 2005711, 2005712, 2007240, 2007241, 2007242 and 2007243

Ref.	Part	Description	Qty.					
			2005711	2005712	2007240	2007241	2007242	2007243
1	2005709	SYSTEM, PR-Xv30, Mini TC, SST, NO MOTOR; See Metering Unit , page 14	1		1		1	
	2005710	SYSTEM, PR-Xv30, Mini TC, CER, NO MOTOR; See Metering Unit , page 14		1		1		1
2	2006950	Control Unit; See Control Unit , page 28	1	1	1	1	1	1
3	CU7758	MOTOR, servo, INOVANCE,100W	2	2	2	2	2	2
4	18D989	SCREW, M4 x 0.7-12, hexagon socket	4	4	4	4	4	4
5	2000923	KIT, clamp, shroud, mixer, 1:10, 08-24T	1	1	1	1	1	1
6*	2000272	CABLE, pressure sensor-A, 10m	1	1	1	1	1	1
7*	2000273	CABLE, pressure sensor-B, 10m	1	1	1	1	1	1
8*	2000274	CABLE, servo encoder-A, 10m	1	1	1	1	1	1
9*	2000275	CABLE, servo encoder-B, 10m	1	1	1	1	1	1
10*	2000276	CABLE, junction box, PR-Xv30, 10m	1	1	1	1	1	1
11*	2000277	CABLE, servo motor-A, 10m	1	1	1	1	1	1
12*	2000278	CABLE, servo motor-B, 10m	1	1	1	1	1	1
13*	----	BLANK, label, kit	1	1	1	1	1	1
14*	----	IDENTIFICATION, PSM product	1	1	1	1	1	1

* Not shown.

Metering Unit

2005709 and 2005710



1 Torque to 0.30-0.37 ft-lb (0.4-0.5 N•m).

3 Torque to 1.25-1.70 ft-lb (1.7-2.3 N•m).

4 Torque to 2.21-2.95 ft-lb (3.0-4.0 N•m).

5 Apply blue anaerobic sealant.

6 Inject lubricant grease to sensor hole.

7 Apply TSL oil.

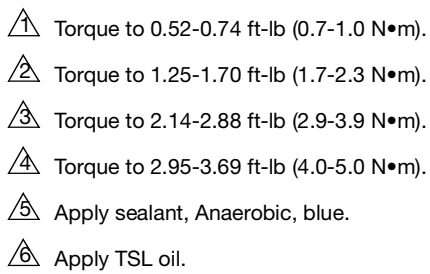
8 Installation direction as show.

Metering Unit Parts List, 2005709 and 2005710

Ref.	Part	Description	Qty.	
			2005709	2005710
101	----	BASE, metering, PR-Xv30, SST; See Base, Metering , page 16	1	
	----	BASE, metering, PR-Xv30, CER; See Base, Metering , page 16		1
102	2005622	MODULE, junction box, PR-Xv30; See Junction Box , page 20	1	1
103	2005690	MODULE, outlet, Mini TC, SST; See Module, Valve, Outlet , page 22	1	
	----	MODULE, outlet, Mini TC, CER; See Module, Valve, Outlet , page 22		1
104	CU6602	KIT, valve, inlet, SST; See Kit, Valve, Inlet , page 26	2	
	CU6595	KIT, valve, inlet, HW; See Kit, Valve, Inlet , page 26		2
105	----	KEY, C style, 3 x 16.5	2	2
106	18F960	PLUG, 1/4 NPT	2	2
107	18F962	PLUG, 1/8 NPT	2	2
108	----	SCREW, M3 x 0.5-12, hexagon socket	8	8
110	----	FITTING, DIA 6, M5 x 0.8	6	6
111	----	SCREW, M5 x 0.8-30, socket	8	8
112	CU0191	FITTING, DIA 6, M5 x 0.8	2	2
113	CU0194	MODULE, gear reducer	2	2
115	18C018	TRANSMITTER, pressure	2	2
118	18E324	PIN, dowel, DIA 5-8	2	2
119	CU1602	PLATE, mounting, PR-Xv30	1	1
120	----	SCREW, M5 x 0.8-20, socket head	8	8
121	----	BRAND, label, PR-Xv30, 23.7 x 68	1	1
122	----	TUBE, 6mm OD x 4mm ID, PU, black	1 ft	1 ft
123	----	TUBE, 6MM OD x 4MM ID, PU, blue	1 ft	1 ft
124▲	189930	LABEL, caution	2	2
125*	238909	WIRE, grounding assembly	1	1
126*	116343	SCREW, ground	1	1
127▲	15H108	LABEL, safety, warning, pinch	1	1

* Installed onto base for grounding. Not shown.

▲ Replacement safety labels, tags, and cards are available at no cost.



Base, Metering Parts List, CU6594 and CU6596

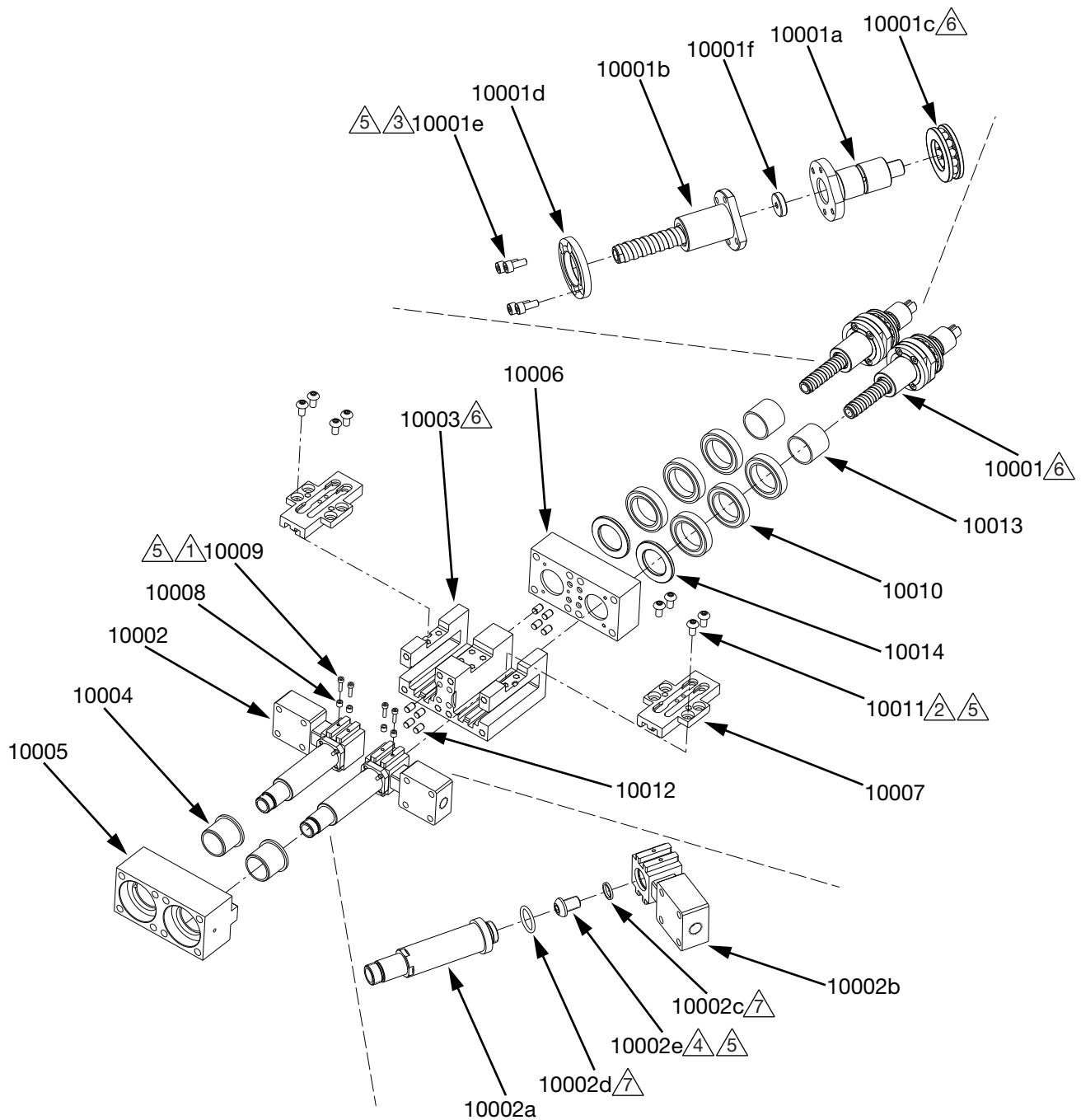
Ref.	Part	Description	Qty.	
			2005709	2005710
1001	----	BASE, structure, PR-Xv30; See Base, Structure, CU6585 , page 18	1	1
1002	CU1414	SLEEVE, cylinder	1	1
1003★❁	----	SUPPORT, back, piston	2	2
1004*★❁	----	O-RING	2	2
1005*★❁	----	PISTON, 480	2	2
1006★❁	----	PLATE, support front, 480	2	2
1007★ ❁	18G068	CYLINDER, 480, SST	1	
	18G069	CYLINDER, 480, CER		1
1008	CU0222	COVER, end, split type	1	1
1009	----	SCREW, M6 x 1-110, hexagon socket	8	8
1010	CU1393	BLOCK, cover	1	1
1011	----	SCREW, M6 x 1.0-70, socket head	8	8
1012	CU0179	SEAT, reduction box	2	2
1013	----	SCREW, M4 x 0.7-10, socket head	8	8
1014	CU0180	RING, guide oil	2	2
1015	18D879	FITTING, zerk	4	4
1016*★❁	----	PACKING, O-ring	4	4
1017	18D615	PLUG, blind flange G1/4	2	2

* Parts included in piston kit 2006391.

★ Parts included in SST metering module kit 2006388.

❁ Parts included in CER metering module kit 2006389.

Base, Structure, CU6585



△1 Torque to 0.15-0.22 ft-lb (0.2-0.3 N•m).

△2 Torque to 1.25-1.70 ft-lb (1.7-2.3 N•m).

△3 Torque to 0.52-0.74 ft-lb (0.7-1.0 N•m).

△4 Torque to 5.24-7.01 ft-lb (7.1-9.5 N•m).

△5 Apply sealant, Anaerobic, blue.

△6 Apply lubricant, grease, high temperature.

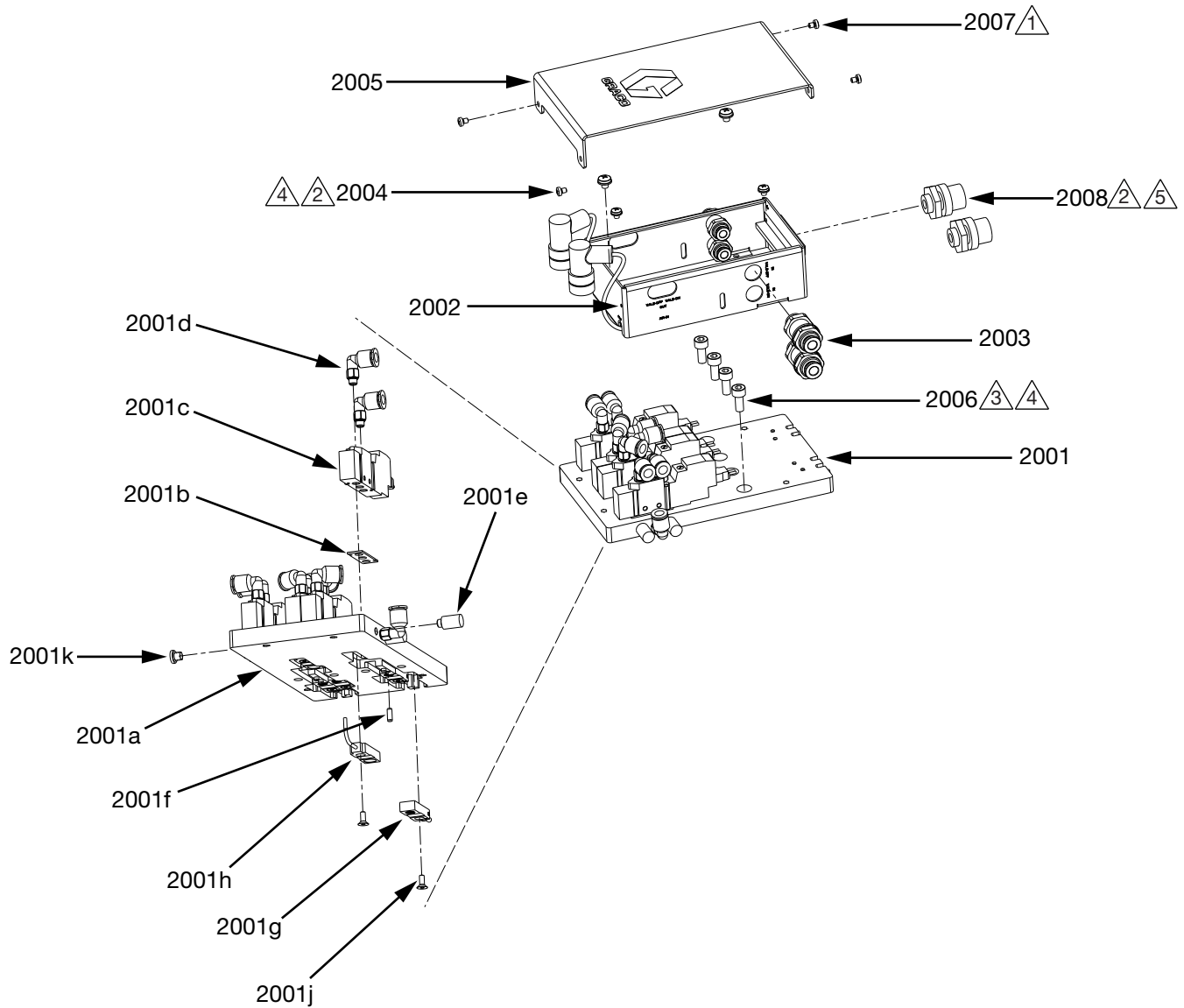
△7 Apply TSL oil.


Base, Structure Parts List, CU6585


Ref.	Part	Description	Qty.	
			2005709	2005710
10001	CU6583	ASSEMBLY, structure, transmission	2	2
10001a	----	ADAPTER, axle sleeve	1	1
10001b	----	SCREW, ball	1	1
10001c	----	BEARING, stop	1	1
10001d	----	WASHER, adapter	1	1
10001e	----	SCREW, M4 x 0.7-10, socket head	4	4
10001f	----	WASHER, adapter	1	1
10002	CU6584	ASSEMBLY, structure, feeding	2	2
10002a	----	ROD, piston	1	1
10002b	----	PART, multi function	1	1
10002c	----	WASHER, seal 1	1	1
10002d	----	O-RING	1	1
10002e	----	SCREW, restructuring, flat round heat M8-12	1	1
10003	CU1409	BASE, block	1	1
10004	----	SLEEVE, guide	2	2
10005	CU1410	SEAT, cylinder	1	1
10006	CU1408	SEAT, bearing	1	1
10007	----	PLATE, cross	2	2
10008	----	SLEEVE, screw	4	4
10009	----	SCREW, M2.5 x 0.45-10, socket	4	4
10010	CU1413	BEARING, ball	6	6
10011	----	SCREW, hexagon socket flat round head, M5 x 10	8	8
10012	----	PIN, dowel, DIA 5-8	8	8
10013	----	RING, adjust, bearing	2	2
10014	----	WASHER, bearing	2	2


Junction Box


2005622




 Torque to 0.07-0.11 ft-lb (0.1-0.15 N•m).

 Torque to 0.52-0.74 ft-lb (0.7-1.0 N•m).

 Torque to 1.25-1.70 ft-lb (1.7-2.3 N•m).

 Apply sealant, Anaerobic, blue.

 Sealing rubber pad is on outside.

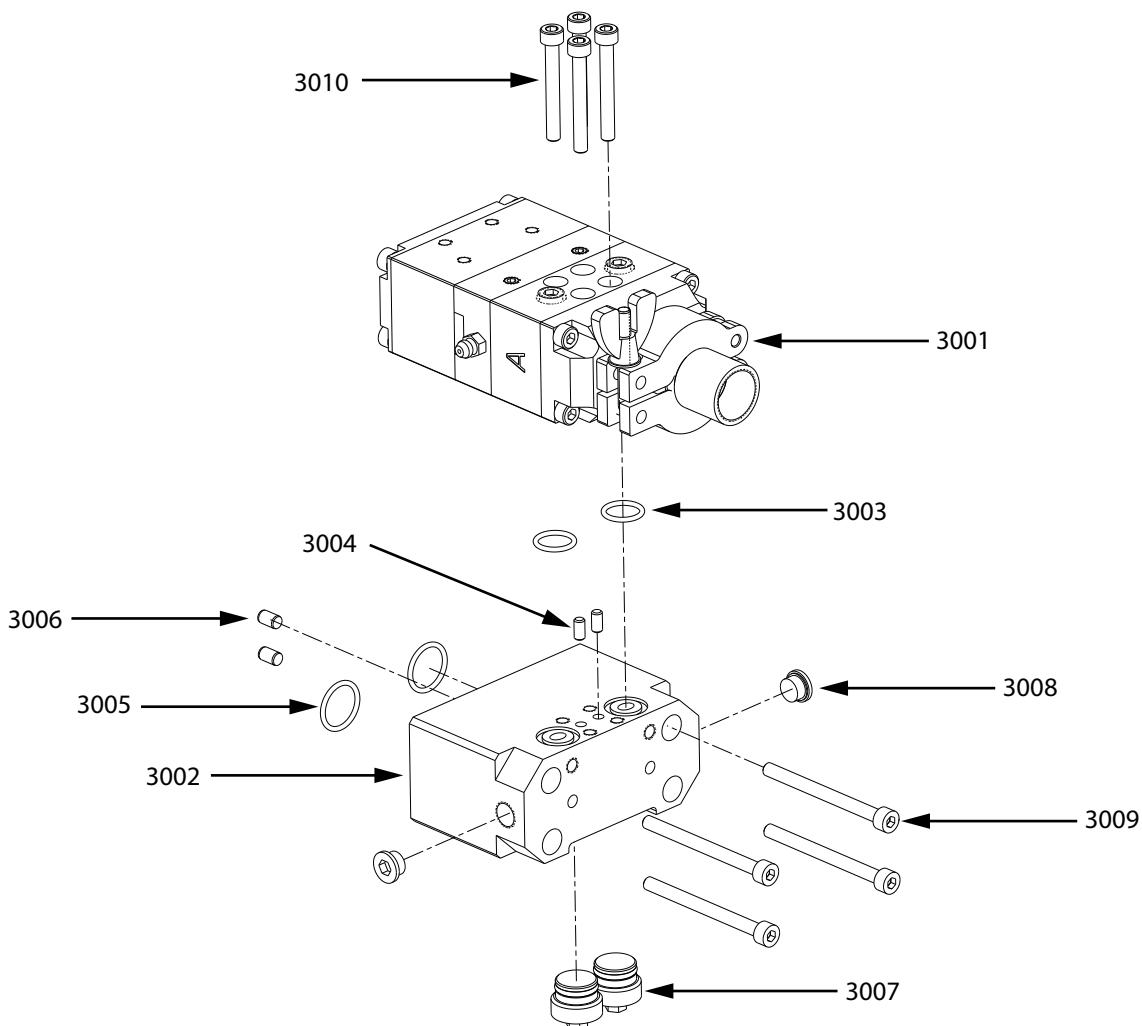
Junction Box Parts List, 2005622

Ref.	Part	Description	Qty.	
			2005709	2005710
2001	----	MODULE, bottom plate, PR-Xv30	1	1
2001a	----	PLATE, electric box bottom	1	1
2001b*	----	GASKET, rubber	4	4
2001c*	----	KIT, solenoid valve	4	4
2001d*	----	FITTING, DIA 6, M5 x 0.8	9	9
2001e	----	MUFFLER, M5	2	2
2001f	----	FITTING, UN 13/16-16, NPT 1/2	4	4
2001g	----	SENSOR, position	4	4
2001h	----	SENSOR, position	2	2
2001j	----	SCREW, M3 x 0.5-8, flat head, SST	6	6
2001k	----	SCREW, M5 x 0.8-6.0, flat head, with O-ring	3	3
2002	----	FRAME, control, PR-Xv30	1	1
2003	----	FITTING, DIA 6, M14 x 1	4	4
2004	----	SCREW, M4 x 0.7-5, PHILLIPS, W washer	4	4
2005	----	COVER, control, PR-Xv30	1	1
2006	----	SCREW, M5 x 0.8-12, hexagon socket	4	4
2007	----	SCREW, M3 x 0.5-6, pan head, SST	4	4
2008	----	FITTING, PIN 4, M12	2	2

* Parts included in fitting solenoid valve kit 2006571.

Module, Valve, Outlet

2005690

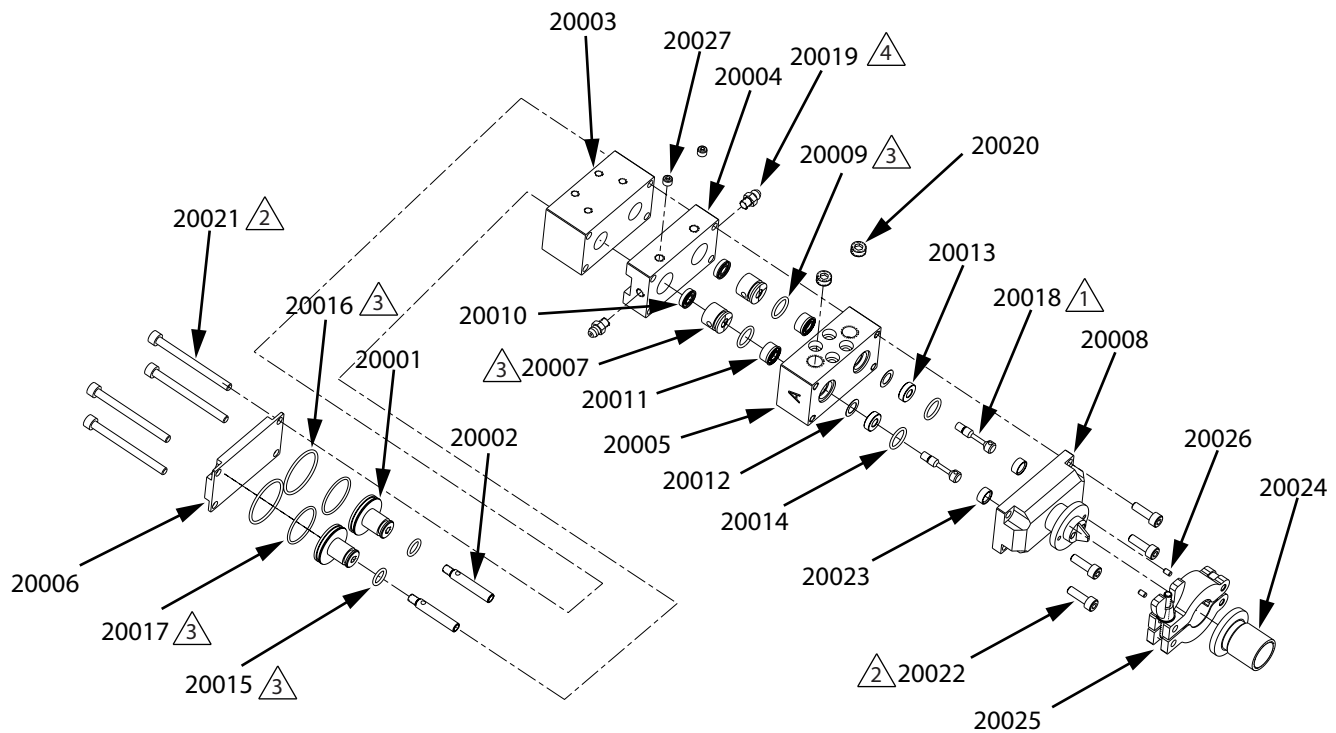


Outlet, Valve Parts List, 2005690

Ref.	Part	Description	Qty.	
			2005709	2005710
3001	2005620	VALVE, TC mini, SST; See Valve, Mini TC, 2005620 and 2005621 , page 24	1	
	2005621	VALVE, TC mini, HW; See Valve, Mini TC, 2005620 and 2005621 , page 24		1
3002	CU1389	BLOCK, connector	1	1
3003*	----	PACKING, O-ring	2	2
3004*	18D684	PIN, dowel, DIA 4-8	2	2
3005*	----	PACKING, O-ring	2	2
3006*	----	PIN, dowel, DIA 5-8	2	2
3007	CU6598	MODULE, plug, 3/4-16 UNF	2	2
3008	18D933	PLUG, blind flange, G 1/8	2	2
3009	----	SCREW, M5 x 0.8-85, socket	4	4
3010	----	SCREW, M5 x 0.8-40, socket	4	4

* Parts included in mini TC base seal kit 2006589.

Valve, Mini TC, 2005620 and 2005621



- △1 Screw needle (20018) with sealant, Anaerobic, blue.
- △2 Install screws (20021 and 20022) with sealant, Anaerobic, blue. Tighten evenly to compress bearing.
- △3 Lubricate all O-ring and sealing surfaces with grease, high temperature.
- △4 Insert one grease fitting (20019). Pump grease, high temperature across bearing. Then insert other fitting.

Valve, Mini TC Parts List, 2005620 and 2005621

Ref.	Part	Description	Qty.	
			2005709	2005710
20001✓	----	PISTON, dispense valve	2	2
20002◆	CU1383	SHAFT, mini TC	2	
✱	CU6603	SHAFT, HW, piston, TC mini		2
20003	CU1384	HOUSING, air cylinder	1	1
20004	CU1385	HOUSING, lubrication, valve	1	1
20005	CU1386	HOUSING FLUID, SST, valve	1	1
20006	CU1388	CAP, air cylinder	1	1
20007✿	----	BEARING, 1K Mini	2	2
20008	CU1387	HOUSING, nose, clamp 1:1	1	1
20009✿	----	PACKING, O-ring	2	2
20010✿	----	PACKING, U-cup URT 1/4, 1/2, 1/8 UR	2	2
20011◆	----	SEAL, U-cup polymt 1/4,1/2,1/4	2	
✱	----	PACKING, U-cup, 1/4 x 1/2 x 1/4, HW		2
20012◆✱	----	GASKET, seat	2	2
20013◆✱	----	SEAT, valve	2	2
20014◆✱	----	PACKING, O-ring	2	2
20015✓	----	PACKING, O-ring	2	2
20016✓	----	PACKING, O-ring	2	2
20017✓	----	O-RING, ID 25 mm x 1.5 mm	2	2
20018◆	----	NEEDLE, 2K2 SST hardened	2	
✱	----	NEEDLE, HW		2
20019	120892	FITTING, grease	2	2
20020	18F962	PLUG, 1/8 NPT	2	2
20021	----	SCREW, M5 x 0.8-60, socket	4	4
20022	----	SCREW, M5 x 0.8-16, socket head, SST	4	4
20023	626060	INSERT, snuff-back, 2K2	2	2
20024	18F967	COVER, mixer	1	1
20025	18F969	CLAMP, seal ring	1	1
20026	18F968	PIN, 3 mm x 5 mm	2	2
20027	18B944	SCREW, set, M6 x 1.0-5, flat	2	2
20028*	18F970	PIN, M5, orifice	2	2
20029*	26D985	KIT, ratio check, 1:1	1	1
20030*	----	CAP, night, TC,1:1	1	1

✓ Parts included in Valve Piston Kit 2006392. Minimum order of two sets.

◆ Parts included in SST Mini 1K Valve Needle Module Kit 2006437. Minimum order of two sets.

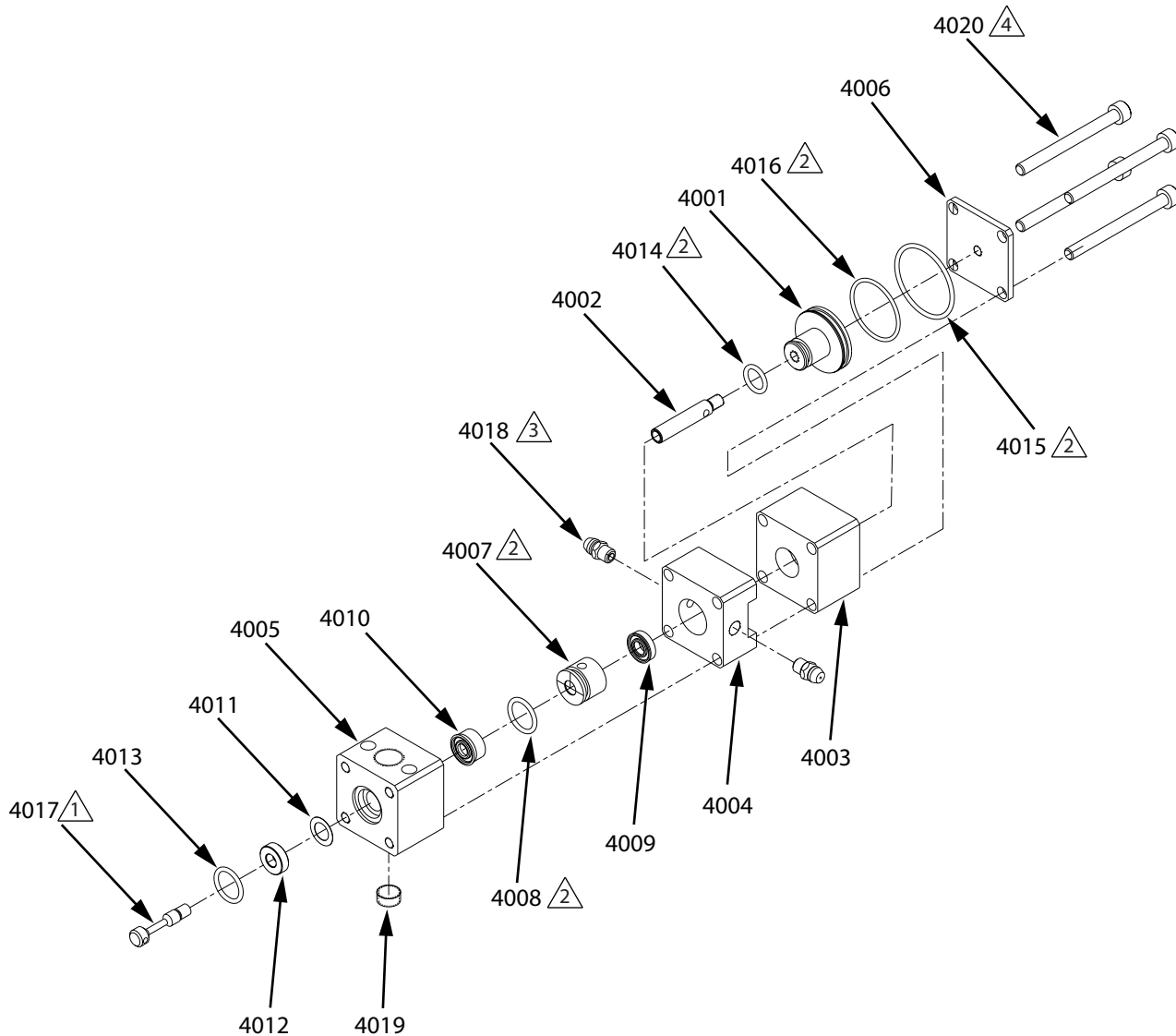
✱ Parts included in HW Mini 1K Valve Needle Module Kit 2006438. Minimum order of two sets.

✿ Parts included in Valve Bearing Kit 2006440. Minimum order of two sets.

* Not shown.

Kit, Valve, Inlet

CU6602 and CU6595



- △1 Screw needle (4017) with sealant, Anaerobic, blue.
- △2 Lubricate all O-ring and sealing surfaces with grease, high temperature.
- △3 Insert one grease fitting (4018). Pump grease, high temperature across bearing. Then insert other fitting.
- △4 Install screws (4020) with sealant, Anaerobic, blue. Tighten evenly to compress bearing.

Inlet Valve Parts List, CU6602 and CU6595

Ref.	Part	Description	Qty.	
			2005709	2005710
4001✓	----	PISTON, dispense valve	1	1
4002◆	CU1383	SHAFT, mini TC	1	
✱	CU6603	SHAFT, HW, piston, TC mini		1
4003	----	HOUSING, air cylinder	1	1
4004	----	HOUSING, lubrication	1	1
4005	----	HOUSING, fluid, SST, 1K Mini valve	1	1
4006	----	CAP, air cylinder	1	1
4007✿	----	BEARING, 1K Mini	1	1
4008✿	----	PACKING, O-ring	1	1
4009✿	----	PACKING, U-cup URT 1/4, 1/2, 1/8 UR	1	1
4010◆	----	SEAL, U-cup POLYMT 1/4, 1/2, 1/4	1	
✱	----	PACKING, U-cup, 1/4 x 1/2 x 1/4, HW		1
4011◆✱	----	GASKET, seat	1	1
4012◆✱	----	SEAT, valve	1	1
4013◆✱	----	PACKING, O-ring	1	1
4014✓	----	PACKING, O-ring	1	1
4015✓	----	PACKING, O-ring	1	1
4016✓	----	O-RING, ID 25 mm x 1.5 mm	1	1
4017◆	----	NEEDLE, 2K2 SST hardened	1	
✱	----	NEEDLE, HW		1
4018	120892	FITTING, grease	2	2
4019	18F962	PLUG, 1/8 NPT	1	1
4020	----	SCREW, M5 x 0.8-60, socket	4	4

✓ Parts included in Valve Piston Kit 2006392.

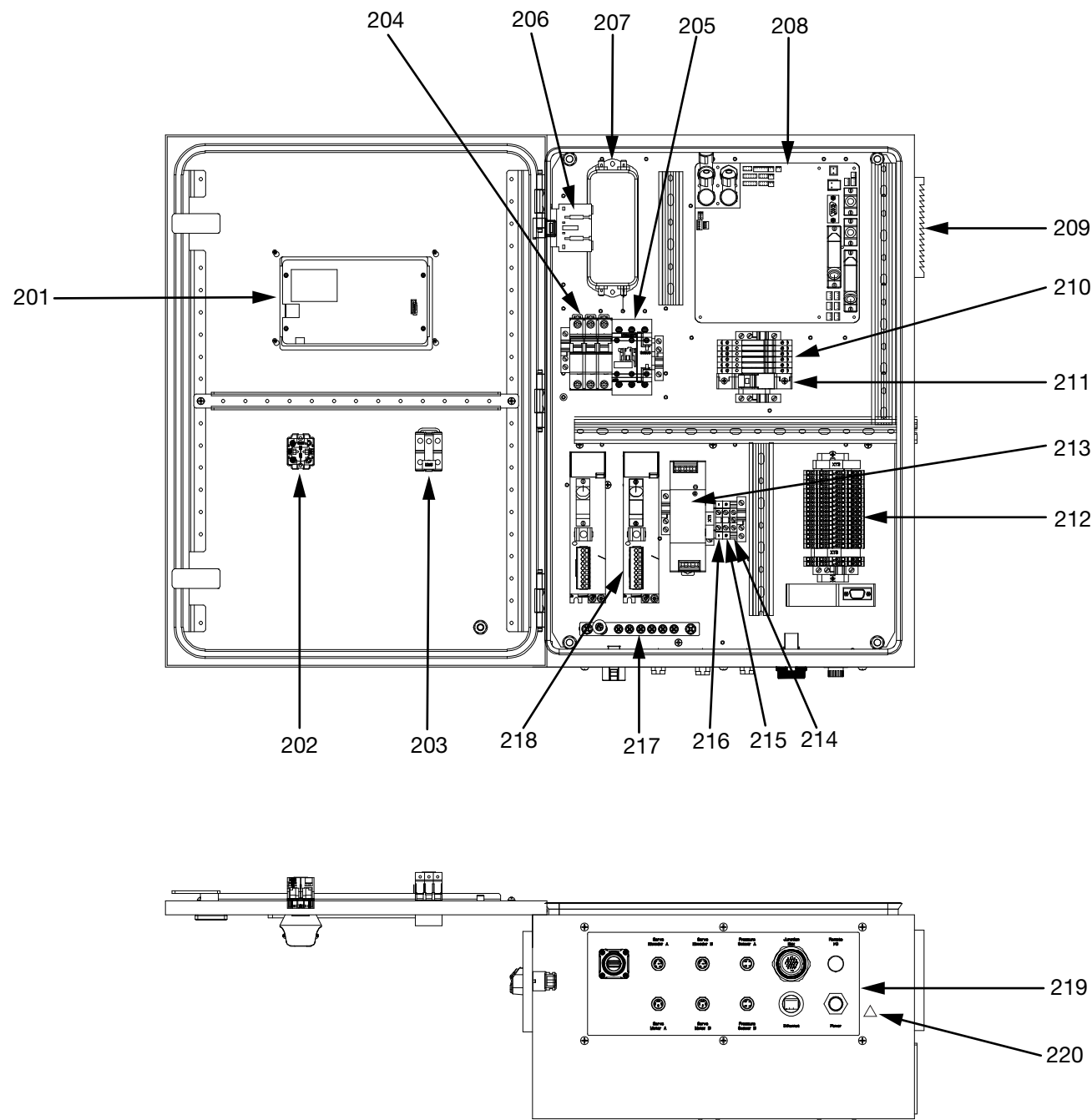
◆ Parts included in SST Mini 1K Valve Needle Module Kit 2006437.

✱ Parts included in HW Mini 1K Valve Needle Module Kit 2006438.

✿ Parts included in Valve Bearing Kit 2006440.

Control Unit

2006950



Control Unit Parts List, 2006950

Ref.	Part	Description	Qty.
201	CU7788	DISPLAY, touch screen	1
202	----	STOP, emergency	1
203	----	STARTER, operator	1
204	----	CIRCUIT BREAKER, 1P, 6A, SCHNEIDER	3
205	----	CONTACT, 3P, 1NO+1NC, SIEMENS	1
206	----	SWITCH, disconnect, 3P	1
207	----	FILTER, 250 VAC, 50 Hz / 60 Hz, 10 A	1
208	----	BOARD, PCB, assembly	1
209	----	FAN, assembly	1
210	----	RELAY, module with base	6
211	----	MODULE, RS-232 to Ethernet	1
212	----	TERMINAL, block, gray	22
213	----	POWER SUPPLY, 150W, 24VDC, MW	1
214	----	TERMINAL, ground, green yellow	1
215	----	TERMINAL, blue	1
216	----	TERMINAL, gray	1
217	----	GROUNDING BAR	1
218	2000343	DRIVER, servo, INNOVANCE	2
219	----	KIT, bottom plate	1
220▲	189930	Label, caution	1
221*	2002899	BRAND, PR-Xv30	1
222*	----	Blank, label kit	1
223*	----	IDENTIFICATION, PSM product	1

* Not Shown.

▲ Replacement safety labels, tags, and cards are available at no cost.

Kits and Accessories

Communication Module

Part	Description	Qty.
2006777	KIT, Modbus-Profinet, PR-Xv30, PCB	1
2007139	KIT, Modbus-Ethernet IP, PR-Xv30, PCB	1

Cables

Part	Description	Qty.
2001820	CABLE, pressure sensor-A, 15m	1
2001821	CABLE, pressure sensor-B, 15m	1
2001822	CABLE, servo encoder-A, 15m	1
2001823	CABLE, servo encoder-B, 15m	1
2008289	CABLE, junction box, PR-Xv30, 15m	1
2001825	CABLE, servo motor-A, 15m	1
2001826	CABLE, servo motor-B, 15m	1
2001827	CABLE, pressure sensor-A, 20m	1
2001828	CABLE, pressure sensor-B, 20m	1
2001829	CABLE, servo encoder-A, 20m	1
2001830	CABLE, servo encoder-B, 20m	1
2008290	CABLE, junction box, PR-Xv30, 20m	1
2001832	CABLE, servo motor-A, 20m	1
2001833	CABLE, servo motor-B, 20m	1

Technical Specifications

PR-Xv30 System		
	US	Metric
Maximum Inlet Fluid Pressure	1200 psi	8.3 MPa, 83 bar
Maximum Working Fluid Pressure	1200 psi	8.3 MPa, 83 bar
Maximum Air Pressure	100 psi	0.7 MPa, 7 bar
Minimum Air Flow	1 CFM	
Electrical Power	200–240 VAC, 50/60 Hz, 10 A	
Viscosity Range	20–1,000,000 cps	
Wetted Parts	303/304 Stainless Steel, Hard Chrome, Ceramic, UHMWPE, NBR, Carbon Steel, PTFE	
Shot Size Range	PR-Xv30 30cc: 0.01–30cc	
Shot Size Repeatability	1%	
Flowrate	0.01–3.6 cc/s (Depends on material viscosity)	
Material Ratio	1:1 to 5:1	
Inlet / Outlet Sizes		
Air Inlet Size		6 mm
Fluid Inlet Size	1/4 in. npt (f)	
Fluid Outlet Size	Clamp	
Weight		
PR-Xv30 Metering Unit	25 lb	11.5 kg
Control Unit	66.6 lb	30.2 kg
Maximum Working Temperature		
Maximum Working Temperature	158°F	70°C
Notes		
All trademarks or registered trademarks are the property of their respective owners.		

California Proposition 65

CALIFORNIA RESIDENTS

 **WARNING:** Cancer and reproductive harm – www.P65warnings.ca.gov.

Graco Standard Warranty

Graco warrants all equipment referenced in this document which is manufactured by Graco and bearing its name to be free from defects in material and workmanship on the date of sale to the original purchaser for use. With the exception of any special, extended, or limited warranty published by Graco, Graco will, for a period of twelve months from the date of sale, repair or replace any part of the equipment determined by Graco to be defective. This warranty applies only when the equipment is installed, operated and maintained in accordance with Graco's written recommendations.

This warranty does not cover, and Graco shall not be liable for general wear and tear, or any malfunction, damage or wear caused by faulty installation, misapplication, abrasion, corrosion, inadequate or improper maintenance, negligence, accident, tampering, or substitution of non-Graco component parts. Nor shall Graco be liable for malfunction, damage or wear caused by the incompatibility of Graco equipment with structures, accessories, equipment or materials not supplied by Graco, or the improper design, manufacture, installation, operation or maintenance of structures, accessories, equipment or materials not supplied by Graco.

This warranty is conditioned upon the prepaid return of the equipment claimed to be defective to an authorized Graco distributor for verification of the claimed defect. If the claimed defect is verified, Graco will repair or replace free of charge any defective parts. The equipment will be returned to the original purchaser transportation prepaid. If inspection of the equipment does not disclose any defect in material or workmanship, repairs will be made at a reasonable charge, which charges may include the costs of parts, labor, and transportation.

THIS WARRANTY IS EXCLUSIVE, AND IS IN LIEU OF ANY OTHER WARRANTIES, EXPRESS OR IMPLIED, INCLUDING BUT NOT LIMITED TO WARRANTY OF MERCHANTABILITY OR WARRANTY OF FITNESS FOR A PARTICULAR PURPOSE.

Graco's sole obligation and buyer's sole remedy for any breach of warranty shall be as set forth above. The buyer agrees that no other remedy (including, but not limited to, incidental or consequential damages for lost profits, lost sales, injury to person or property, or any other incidental or consequential loss) shall be available. Any action for breach of warranty must be brought within two (2) years of the date of sale.

GRACO MAKES NO WARRANTY, AND DISCLAIMS ALL IMPLIED WARRANTIES OF MERCHANTABILITY AND FITNESS FOR A PARTICULAR PURPOSE, IN CONNECTION WITH ACCESSORIES, EQUIPMENT, MATERIALS OR COMPONENTS SOLD BUT NOT MANUFACTURED BY GRACO. These items sold, but not manufactured by Graco (such as electric motors, switches, hose, etc.), are subject to the warranty, if any, of their manufacturer. Graco will provide purchaser with reasonable assistance in making any claim for breach of these warranties.

In no event will Graco be liable for indirect, incidental, special or consequential damages resulting from Graco supplying equipment hereunder, or the furnishing, performance, or use of any products or other goods sold hereto, whether due to a breach of contract, breach of warranty, the negligence of Graco, or otherwise.

FOR GRACO CANADA CUSTOMERS

The Parties acknowledge that they have required that the present document, as well as all documents, notices and legal proceedings entered into, given or instituted pursuant hereto or relating directly or indirectly hereto, be drawn up in English. Les parties reconnaissent avoir convenu que la rédaction du présente document sera en Anglais, ainsi que tous documents, avis et procédures judiciaires exécutés, donnés ou intentés, à la suite de ou en rapport, directement ou indirectement, avec les procédures concernées.

Graco Information

Sealant and Adhesive Dispensing Equipment

For the latest information about Graco products, visit www.graco.com.

For patent information, see www.graco.com/patents.

TO PLACE AN ORDER, contact your Graco distributor, go to www.graco.com, or call to identify the nearest distributor.

If calling from the USA: 1-800-746-1334

If calling from Asia Pacific: 00-86-512-6260-5711 or 00-86-21-2310-6198

If calling from Europe: 00-32-89-770-862

*All written and visual data contained in this document reflects the latest product information available at the time of publication.
Graco reserves the right to make changes at any time without notice.*

Original instructions. This manual contains English. MM 3B0213

Graco Headquarters: Minneapolis

International Offices: Belgium, China, Japan, Korea

GRACO INC. AND SUBSIDIARIES • P.O. BOX 1441 • MINNEAPOLIS MN 55440-1441 • USA
Copyright 2023, Graco Inc. All Graco manufacturing locations are registered to ISO 9001.

www.graco.com
Revision B, March 2025