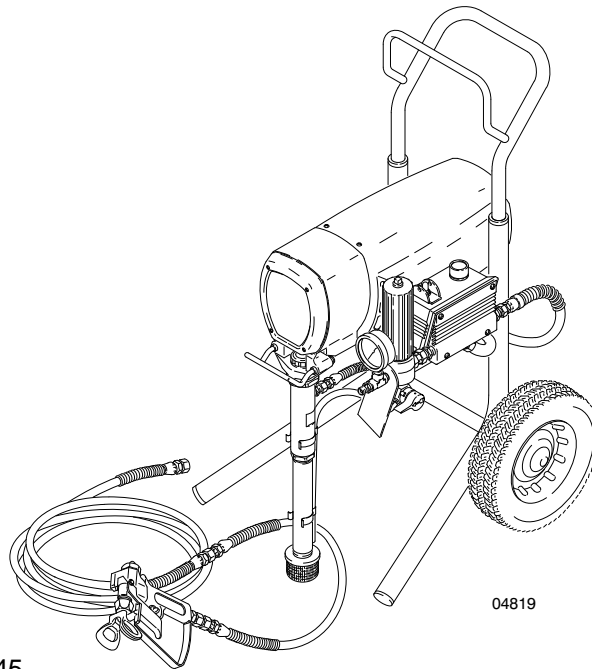


E-Z REFERENCE Ultra Plus+ 750



Model 231-345
Complete sprayer on upright cart with 50 ft hose, 3 ft whip hose, and Contractor Gun with RAC® IV DripLess™ tip guard and SwitchTip™

Technical Data

Maximum Working Pressure 210 bar
Electric Motor 3/4 HP, DC
Sound Data
Sound Pressure Level 90 dB(A)*
Sound Power Level 100 dB(A)*
* Measured while spraying waterbase paint, gravity
1.36 through a 0.019 tip at 210 bar) per ISO 3744
Power Requirements . 220/240 VAC, 50 Hz, 1-phase,
6-amp minimum or a 3500 watt generator
Power Cord 1.5 mm², 3 wire, 2.6 m (8.5 ft)
Delivery 2.9 liters per minute
Cycles Per Liter (gallon) 18.2 (69)
Tip Size one gun with 0.027 tip
with waterbase at 2000 psi (138 bar)
Pump Inlet Size 3/4 npt(m) with 30-degree inside
chamfer
Inlet Paint Strainer 1190 micron
reusable stainless steel screen
Fluid Filter Outlet Size 1/4 npsm from filter
Fluid Filter Material aluminum, carbon steel,
stainless steel, 250-micron
reusable stainless steel screen

Pump Material carbon steel, polyurethane,
stainless steel, Delrin®
Pump Packing Material leather, UHMWPE
Spray Hose Requirements grounded,
15 m minimum, 1/4 in. I.D., non-wire braid,
spring guards on both ends

Application

Sprays a range of architectural coatings from heavy-bodied latex and block fillers to stains. **Do not** use with solvents such as methylene chloride or other HHCs.

U.S. patent numbers 4,323,741; 4,397,610.

Patented 1983.

Canada and other patents pending.

Dimensions

Weight (dry w/o packaging) 41 kg
Height 711 mm
Length 660 mm
Width 572 mm



GRACO INC. P.O. BOX 1441 MINNEAPOLIS, MN 55440-1441

©COPYRIGHT 1995, GRACO INC. PRINTED IN U.S.A. 3Z8-365 August 1995

3Z8-365

Rev A

E-Z REFERENCE

Supplement to instruction manual 308-365.

Ultra[®] Plus+ 750 Airless Paint Sprayer

⚠ WARNING



INJECTION HAZARD

This form is only a quick reference to the features and frequently ordered parts of this sprayer. To reduce the risk of serious injury, including fluid injection, while operating or repairing this sprayer, follow the warnings and instructions in manual 308-365.

Model 231-345, Series A



Ref No.	Part No.	Description
1	181-072	Strainer
2	181-102	Clip
3	185-386	Suction Tube
4	190-091	Drain Hose
5	222-580	Displacement Pump
5a	179-809	. Packing Nut
5b	185-211	. Cylinder
5c	185-213	. Sleeve
5d	222-438	. Piston Rod
5e	218-036	. Piston Valve
5f	222-437	. Intake Valve
6	186-494	Clip
7	218-035	Bearing Housing
8	218-034	Connecting Rod
9	220-369	Drive Housing
10	179-961	Gear Reducer
11	236-561	Electric Motor
12▲	185-951	Danger Label
13	222-554	Handle
14	222-555	Frame
15	214-570	Fluid Filter
16	102-814	Gauge
17	237-677	Pressure Drain Valve
18	105-659	Switch Boot
19	111-826	Toggle Switch
20	237-491	Filter Board
21	237-663	Pressure Control Board

▲ Extra danger labels are available for free.

Packing Repair Kit 222-588

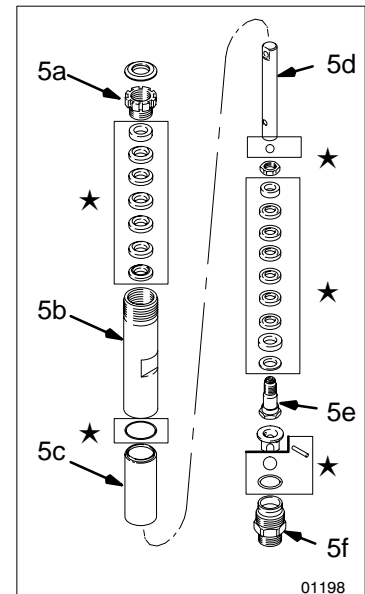
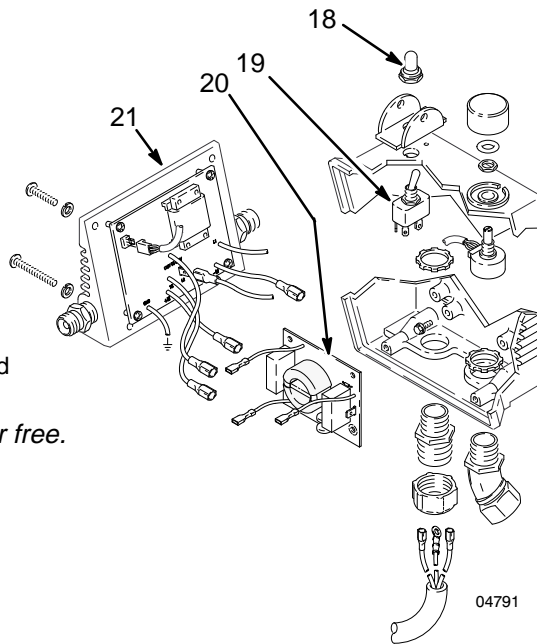
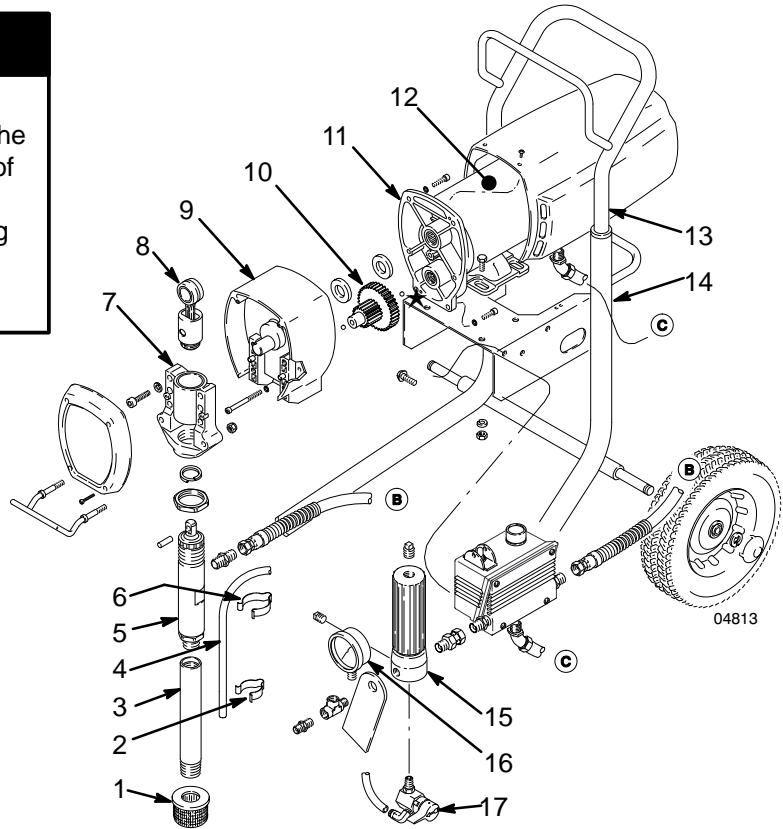
Includes all parts marked with a ★

Sleeve Removal Tool 222-586

Required for removing pump sleeve

Motor Brush Repair Kit 220-853

Motor Brush Spring Clip 110-816



04791

01198