

GENUINE GRACO PARTS AND ACCESSORIES



# 247881 Repair Kit

For 247599 Displacement Pump

406689B

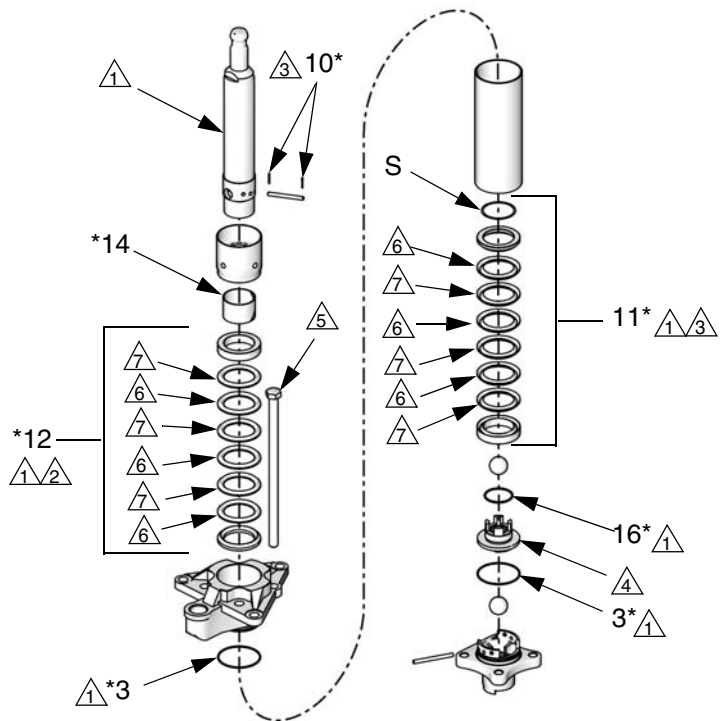


### Important Safety Instructions

Read all warnings and instructions in manual 312745. Save those instructions.

Ref.	Description	Qty.
3*	O-RING; PTFE	2
10*	PIN, cotter	2
11*	PACKING STACK, piston	1
12*	PACKING STACK, throat	1
14*	BEARING, throat	1
16*	O-RING; PTFE	1

- Lubricate.
- Do not disassemble throat packing stack (12). Lips of throat packings must face down.
- Do not disassemble piston packing stack (11). Piston packing stack includes up to three shims (S). Lips of piston packings must face up.
- Torque to 150-175 ft-lb (203-237 N•m).
- Torque to 57-63 ft-lb (77-85 N•m).
- Carbon-filled PTFE.
- PTFE.



T111390A

Graco Inc. P.O. Box 1441 Minneapolis, MN 55440-1441

406689 Rev B, 2/2011

Copyright 2008, Graco Inc. is registered to I.S. EN ISO 9001