



Check Ball and Seat Kits

406848C

Merkur™ Bellows Pumps

EN



Important Safety Instructions

Read all warnings and instructions in manuals 312793 and 312795. Save all instructions.

Standard Kits

Tungsten Carbide Seats, 440 Stainless Steel Balls

Kit 24A787

LB050x (50cc) Pump

Kit 24A788

LB100x (100cc) and LB 150x (150cc) Pumps

| Ref | Description | OD in. (mm) | | Qty |
|-----|---|----------------|--------------------------|-----|
| | | 24A787 | 24A788 | |
| 101 | SEAT, outlet, tungsten carbide | | | 1 |
| 102 | O-RING, piston | 0.56 (14) | 0.85 (22) | 2 |
| 103 | NUT, flow-through | | | 1 |
| 104 | O-RING, foot cap | 1.8 (46) | 2.4 (61)* 2.7 (69)** | 1 |
| 105 | SEAT, inlet, tungsten carbide | | | 1 |
| 106 | CHECK BALL, inlet, 440 stainless steel | 0.375 (10) | 0.75 (19) | 1 |
| 107 | SPRING, ball stop | | | 1 |
| 108 | CHECK BALL, outlet, 440 stainless steel | 0.375 (10) | 0.56 (14) | 1 |
| 109 | O-RING, packing nut, top | 1.9 (48) | 1.9 (48) | 1 |
| 110 | O-RING, packing nut, bottom | 1.6 (41) | 2.0 (51)* 2.25 (57)** | 1 |
| 111 | O-RING, bellows chamber | 2.5 (64) | 2.5 (64) | 1 |

* Use smaller o-ring if you have a 100cc model.

** Use larger o-ring if you have a 150cc model.

Optional Kits***

316 Stainless Steel Seats, 316 Stainless Steel Balls

Kit 24A800

LB050x (50cc) Pump

Kit 24A801

LB100x (100cc) and LB 150x (150cc) Pumps

| Ref | Description | OD in. (mm) | | Qty |
|-----|---|----------------|--------------------------|-----|
| | | 24A800 | 24A801 | |
| 101 | SEAT, outlet, stainless steel | | | 1 |
| 102 | O-RING, piston | 0.56 (14) | 0.85 (22) | 2 |
| 103 | NUT, flow-through | | | 1 |
| 104 | O-RING, foot cap | 1.8 (46) | 2.4 (61)* 2.7 (69)** | 1 |
| 105 | SEAT, inlet, stainless steel | | | 1 |
| 106 | CHECK BALL, inlet, 316 stainless steel | 0.375 (10) | 0.75 (19) | 1 |
| 107 | SPRING, ball stop | | | 1 |
| 108 | CHECK BALL, outlet, 316 stainless steel | 0.375 (10) | 0.56 (14) | 1 |
| 109 | O-RING, packing nut, top | 1.9 (48) | 1.9 (48) | 1 |
| 110 | O-RING, packing nut, bottom | 1.6 (41) | 2.0 (51)* 2.25 (57)** | 1 |
| 111 | O-RING, bellows chamber | 2.5 (64) | 2.5 (64) | 1 |

*** Replaces standard kits for high corrosive applications.

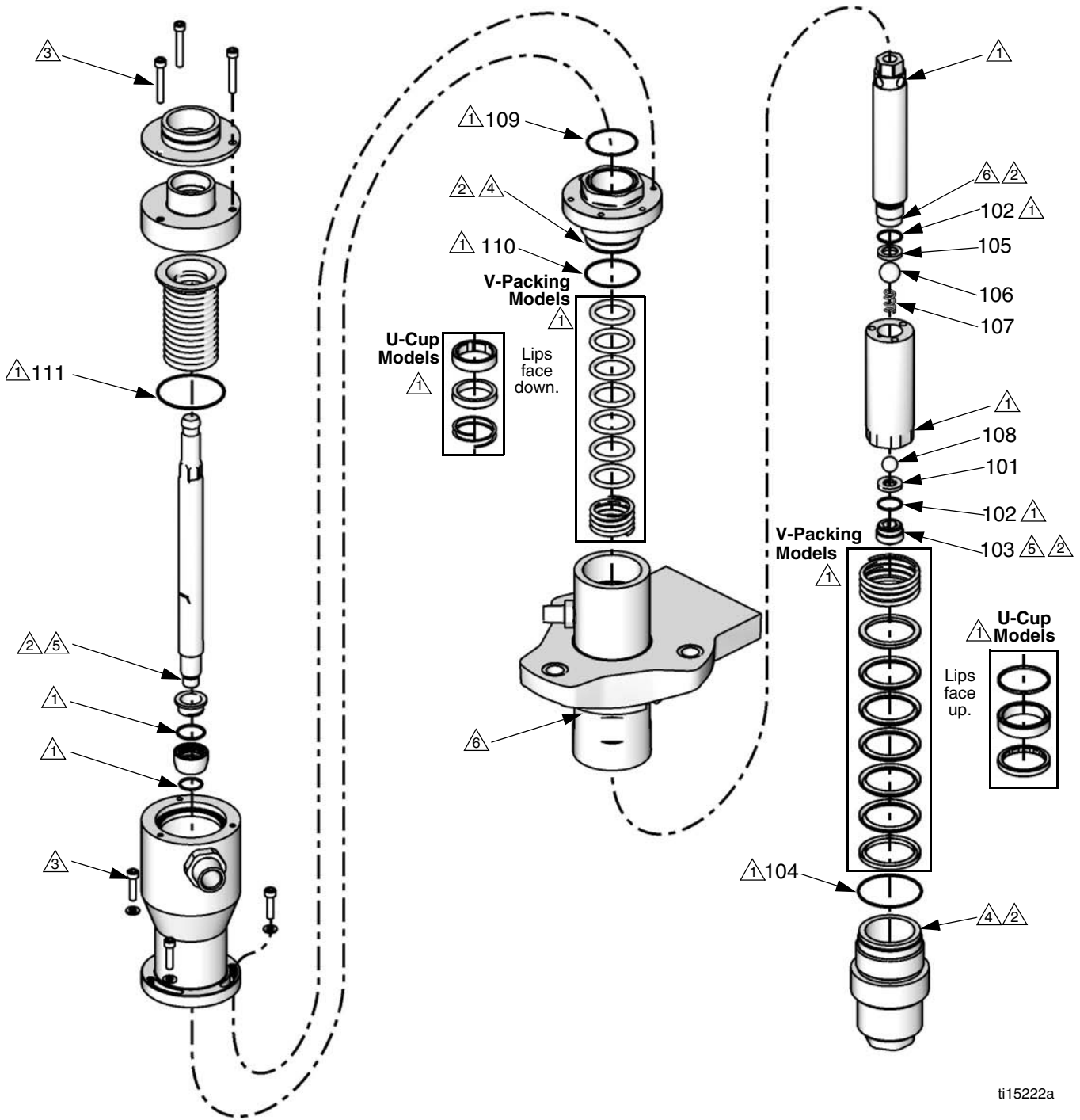
Graco Inc. P.O. Box 1441 Minneapolis, MN 55440-1441

Original instructions. MM 406848

Copyright 2010, Graco Inc. is registered to ISO 9001

Revision C - May 2013

NOTE: Full disassembly shown. Disassemble only as far as needed for the parts being replaced.



ti15222a

- △1 Apply grease.
- △2 Apply thread lubricant.
- △3 Torque to 100-120 in-lb (11-14 N•m).
- △4 Torque to 54-66 ft-lb (73-89 N•m).

- △5 Torque to 74-86 ft-lb (100-117 N•m).
- △6 Torque to 91-109 ft-lb (123-148 N•m).