

Displacement Rod Kits

406850C

Merkur™ Bellows Pumps

ENG



Important Safety Instructions

Read all warnings and instructions in manuals 312793 and 312795. Save all instructions.

See reverse for parts illustration and assembly notes.

TIP: Some o-rings are close in size. Stack on bench to differentiate.

Kit 24F492, LB050x (50cc) pumps

Kit 24F296, LB100x (100cc) pumps

Kit 24F295, LB150x (150cc) pumps

Ref.	Description	OD in. (mm)			Qty.
		24F492	24F296	24F295	
101	DISPLACEMENT ROD				1
102	O-RING, foot cap	1.8 (46)	2.4 (61)	2.7 (69)	1
103*	O-RING, packing nut bottom	1.6 (41)	2.0 (51)	2.3 (58)	1
104*	O-RING, packing nut top	1.9 (48)	1.9 (48)	1.9 (48)	1
105	O-RING, bellows chamber	2.5 (64)	2.5 (64)	2.5 (64)	1
106**	O-RING, piston	0.6 (15)	0.8 (20)	0.8 (20)	1

* May not be used. Remove packing nut only if necessary. If removed, replace o-rings before reassembly.

** May not be used. Piston and rod may separate during disassembly. If separated, always replace the o-ring before reassembly.

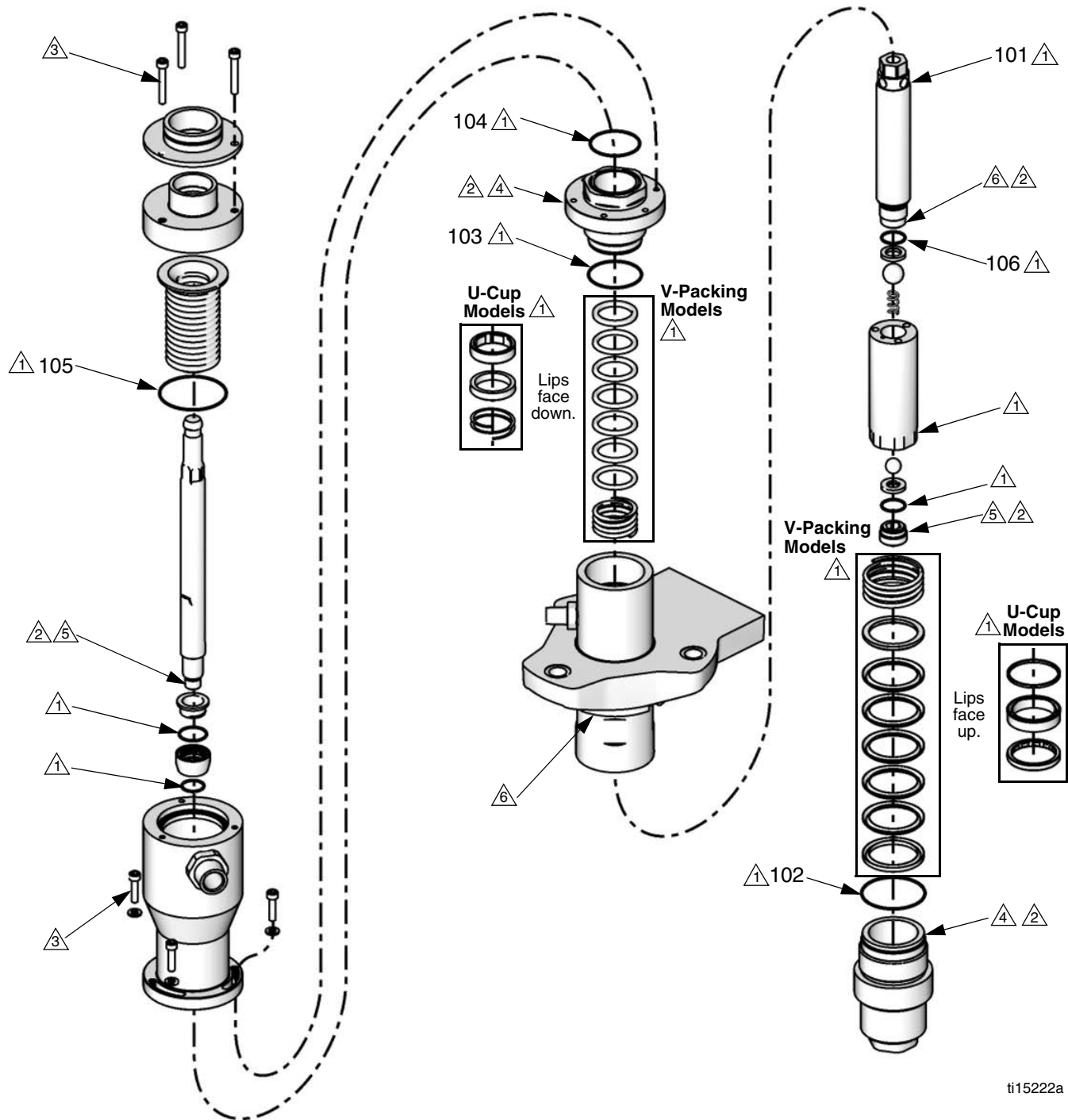
Graco Inc. P.O. Box 1441 Minneapolis, MN 55440-1441

Original instructions. MM 406850

Copyright 2010, Graco Inc. is registered to ISO 9001

Revised 7/2010

NOTE: Full disassembly shown. Disassemble only as far as needed for the parts being replaced.



ti15222a