

# O-Ring Repair Kits

Merkur™ Bellows Pumps

406851B

ENG



## Important Safety Instructions

Read all warnings and instructions in manuals 312793 and 312795. Save all instructions.

See reverse for parts illustration and assembly notes.

**TIP:** Some o-rings are close in size. Stack on bench to differentiate.

**Kit 24E713, LB050x (50 cc) pumps**

**Kit 24E714, LB100x (100 cc) pumps**

**Kit 24E715, LB150x (150cc) pumps**

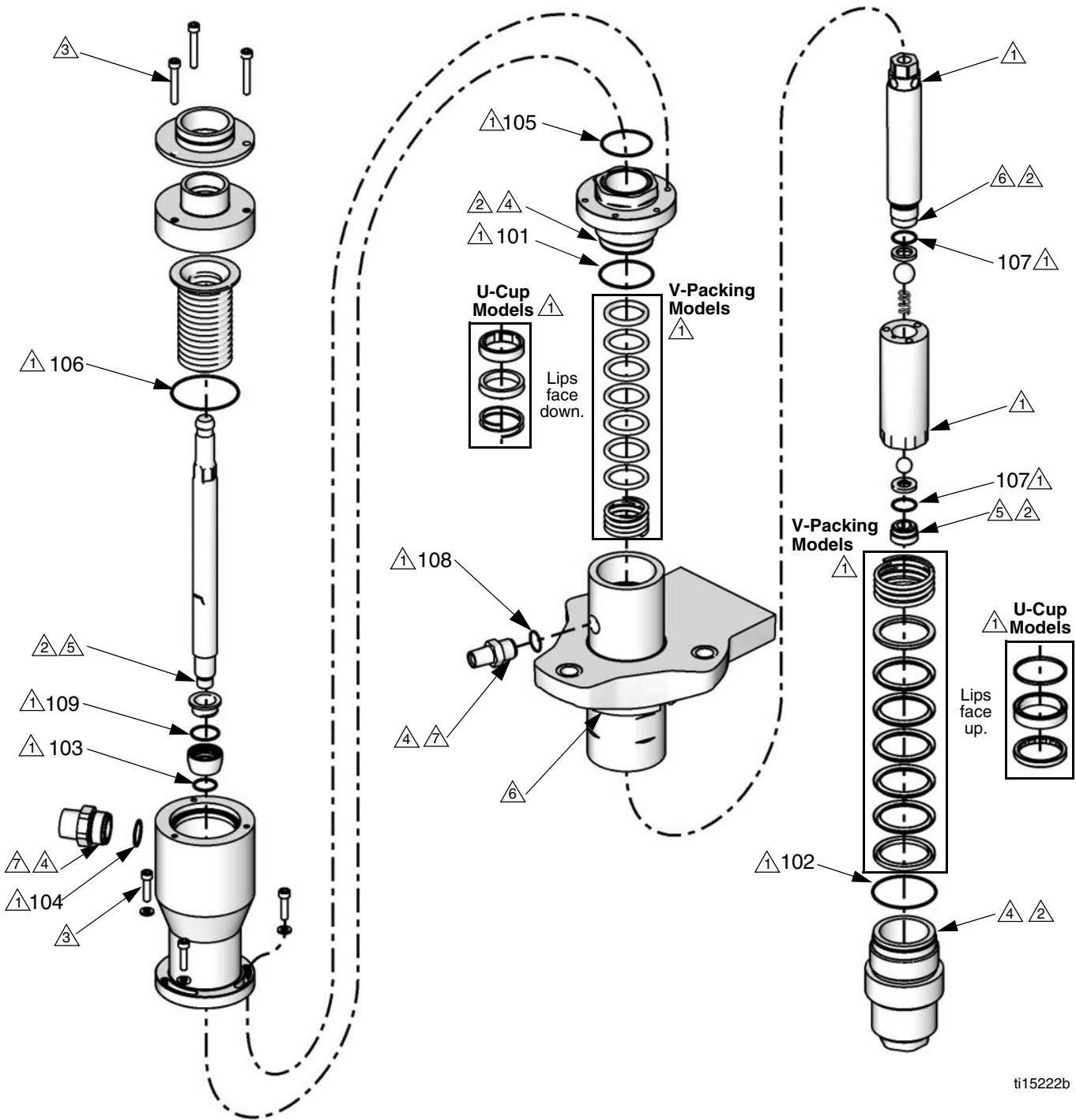
Ref	Description	OD in. (mm)			Qty
		24E713	24E714	24E715	
101	O-RING, packing nut bottom	1.6 (41)	2.0 (51)	2.3 (58)	1
102	O-RING, foot cap	1.8 (46)	2.4 (61)	2.7 (69)	1
103	O-RING, snap bushing	0.9 (23)	0.9 (23)	0.9 (23)	1
104	O-RING, inlet fitting	1.0 (25)	1.0 (25)	1.0 (25)	1
105	O-RING, packing nut top	1.9 (48)	1.9 (48)	1.9 (48)	1
106	O-RING, bellows chamber	2.5 (64)	2.5 (64)	2.5 (64)	1
107	O-RING, piston	0.6 (15)	0.8 (20)	0.8 (20)	2
108	O-RING, outlet fitting	0.6 (15)	0.6 (15)	1.0 (25)	1
109	O-RING, snap bushing, FKM	1.1 (28)	1.1 (28)	1.1 (28)	1

Graco Inc. P.O. Box 1441 Minneapolis, MN 55440-1441

Original instructions. MM 406851

Copyright 2010, Graco Inc. is registered to ISO 9001

Revised 7/2010



ti15222b

- ① Apply grease.
- ② Apply thread lubricant.
- ③ Torque to 100-120 in-lb (11-14 N•m).
- ④ Torque to 54-66 ft-lb (73-89 N•m).

- ⑤ Torque to 74-86 ft-lb (100-117 N•m).
- ⑥ Torque to 91-109 ft-lb (123-148 N•m).
- ⑦ Apply high-strength thread locker.